

## [Tech Note 961](#)

# Configuring ArcestrA Security for InBatch

---

All Tech Notes, Tech Alerts and KBCD documents and software are provided "as is" without warranty of any kind. See the [Terms of Use](#) for more information.

Topic#: 002781

Created: April 2013

## Introduction

This *Tech Note* describes the procedure for configuring ArcestrA Security inside of InBatch.

## Application Version

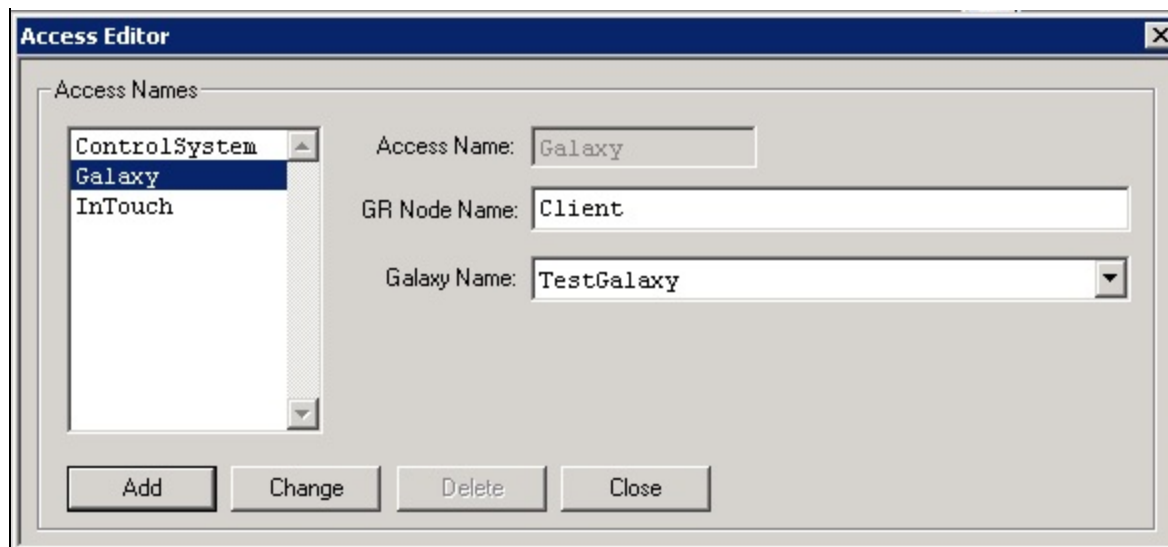
- InBatch 9.x

## Prerequisites

- ArcestrA Security-enabled users configured and ready to be mapped to InBatch Security.
- Ensure that proper license is installed for System Platform.
- A Platform must be deployed to the InBatch Server Node in order to use ArcestrA Security for InBatch.
- The IDE must also be installed to browse the Galaxy name space. Otherwise, Galaxy attributes and users must be mapped manually.

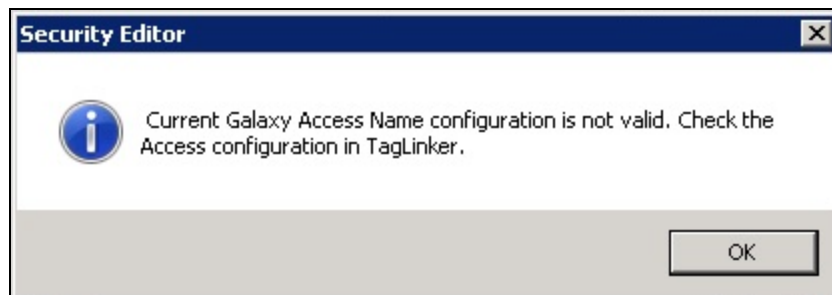
## Procedure

1. Ensure that in TagLinker under Edit/Access Names, the **GR Node Name** and **Galaxy Name** are configured as shown in Figure 1 (below).
2. Make sure that you click **Change** in Figure1 and also validate the TagLinker (**File/Validate from TagLinker**).



**FIGURE 1: ACCESS NAMES FOR THE GALAXY NODE AND GALAXY NAME**

If the Access names are not configured correctly, starting the Security Editor will generate the following message (Figure 2 below).



**FIGURE 2: SECURITY EDITOR MESSAGE WHEN ACCESS NAMES ARE INCORRECT**

3. Start the Security Editor from the Environment Display.
4. Login using **system/system** for username/password. The **Security Editor** appears (Figure 3 below).

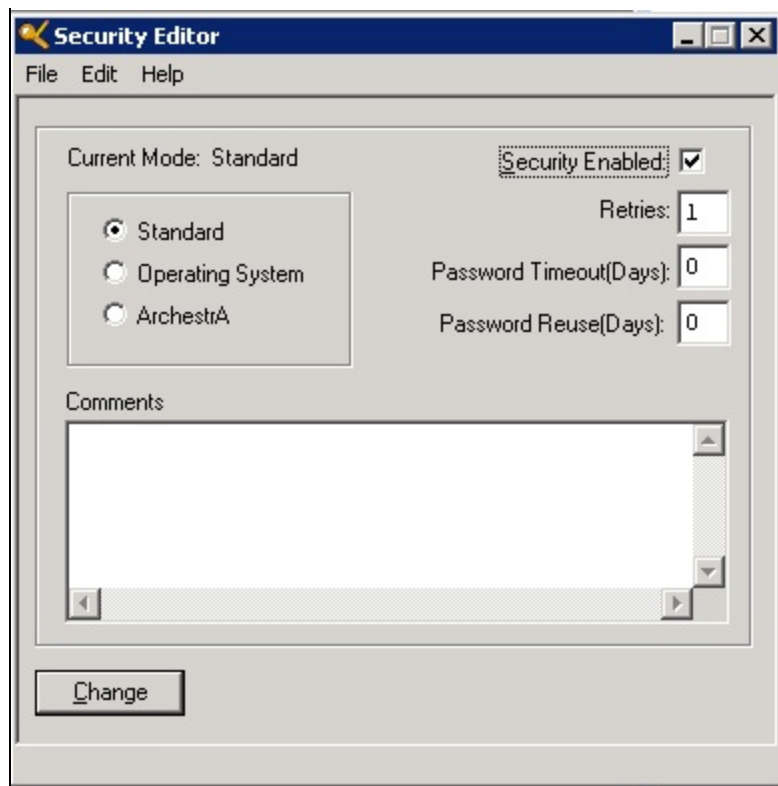


FIGURE 3: INBATCH SECURITY EDITOR

5. Click the **ArcestrA** option (Figure 3 above), then click **Change**. The following message appears.

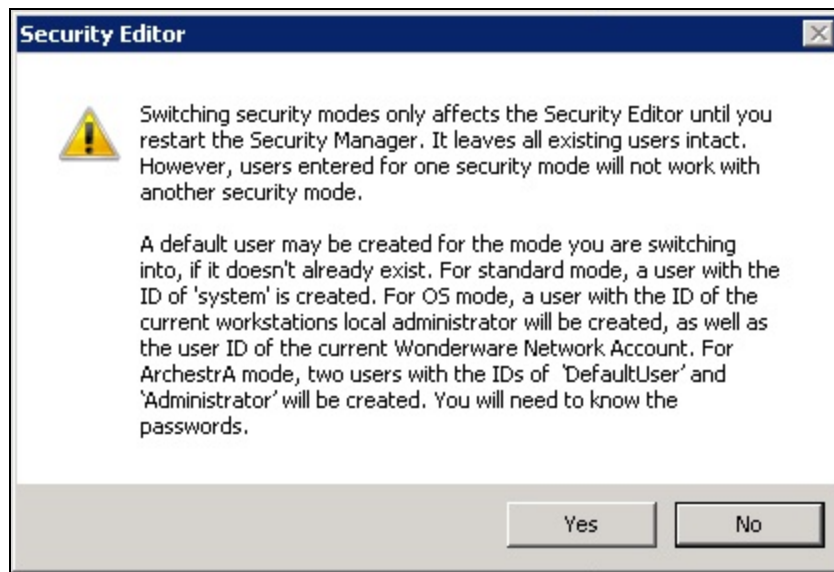


FIGURE 4: CHANGING THE SECURITY MODE

6. Click **Yes** and close the Security Editor.

**Note:** Changing the Security Mode requires restarting the Environment Display. Clicking **File/Exit-Shutdown** from the Environment Display and restarting the Environment Display restarts InBatch Security Manager.

7. Launch the Security Editor from Environment Display. Login to the Security Editor using Administrator/Password that you use for ArchestrA Security. The **Security Editor** window appears.

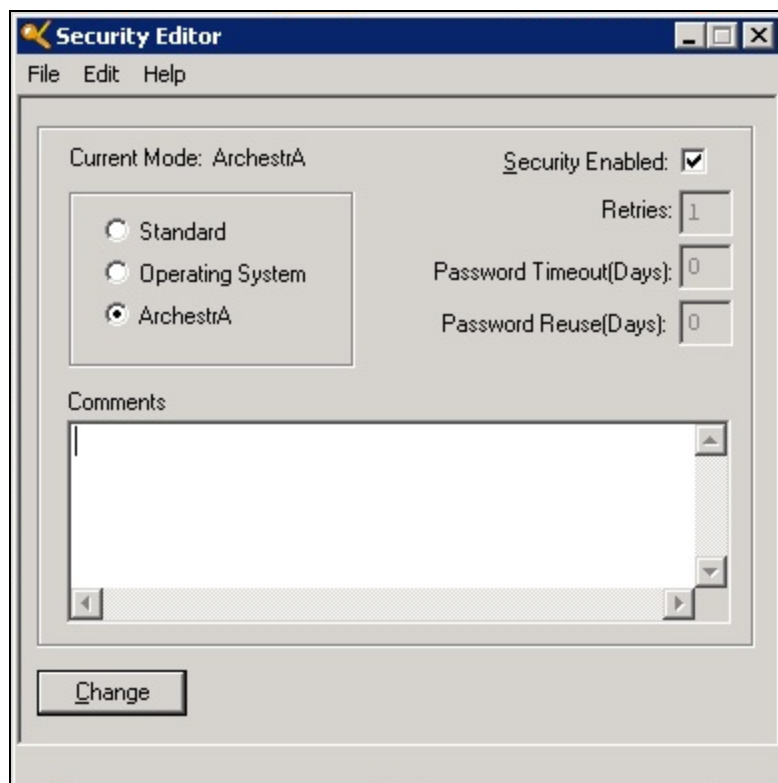


FIGURE 5: SECURITY EDITOR

8. Click **Edit/UserGroups-Accounts**. The User/Group Account Editor appears (Figure 6 below).

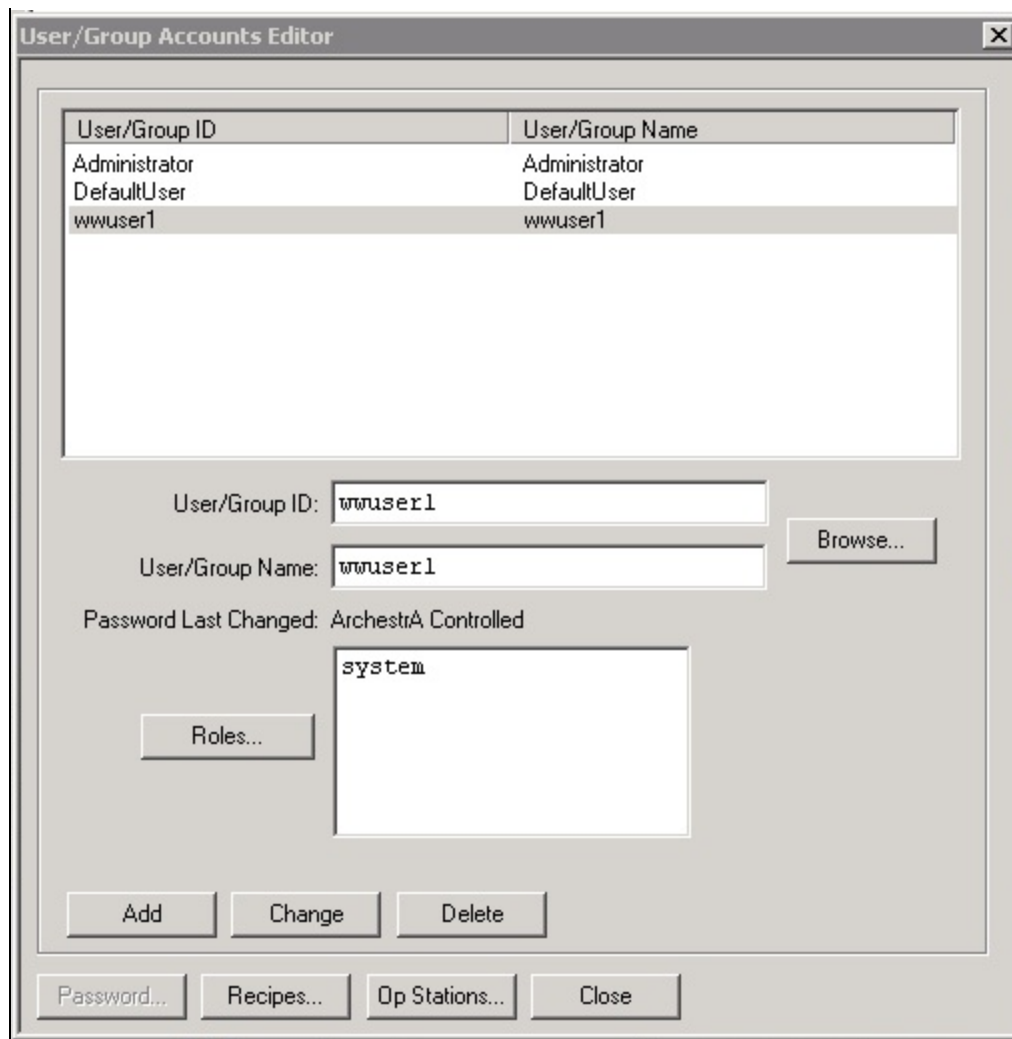
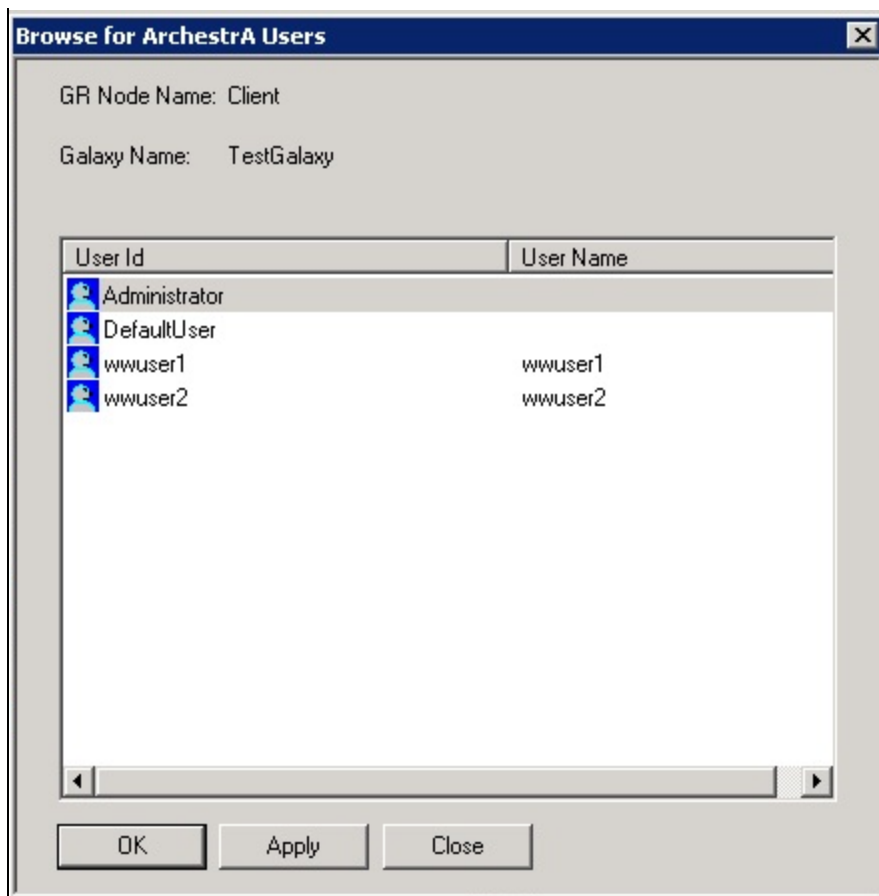


FIGURE 6: USER/GROUP ACCOUNTS EDITOR

9. Click the **Browse** button. The **Browse for Arcestra Users** window appears (Figure 7 below).



**FIGURE 7: BROWSE FOR ARCESTR A USERS**

**Note:** The rest of the configuration is same as for Standard InBatch Users. If you experience problems, contact Invensys Support.

S. Mariyala

*Tech Notes* are published occasionally by Wonderware Technical Support. Publisher: Invensys Systems, Inc., 26561 Rancho Parkway South, Lake Forest, CA 92630. There is also technical information on our software products at [Wonderware Technical Support](#).

For technical support questions, send an e-mail to [wwsupport@invensys.com](mailto:wwsupport@invensys.com).

 [Back to top](#)

©2013 Invensys Systems, Inc. All rights reserved. No part of the material protected by this copyright may be reproduced or utilized in any form or by any means, electronic or mechanical, including photocopying, recording, broadcasting, or by any information storage and retrieval system, without permission in writing from Invensys Systems, Inc.

[Terms of Use](#).