

[Tech Note 972](#)

Migrating the Galaxy to Arcestra System Platform 2012 R2 (Application Server 3.6)

All Tech Notes, Tech Alerts and KBCD documents and software are provided "as is" without warranty of any kind. See the [Terms of Use](#) for more information.

Topic#: 002795

Created: July 2013

Introduction

This *Tech Note* outlines the requirements and steps required to migrate previous versions of an Application Server Galaxy to Arcestra System Platform 2012 R2 (Application Server 3.6).

Note: If you have a large Galaxy you should review [Tech Note 921 Optimizing SQL Server for Large Galaxy Migration](#).

Application Versions

- Wonderware Application Server 3.6

Pre-Requisites

Make sure the following pre-requisites are satisfied:

- You must apply the following steps **offline**. This means that you have to UN-Deploy the Galaxy before migration to avoid any problems during the migration process.
- The IDE you use to migrate the Galaxy database must be the current version (3.6).
- The GR node must already be upgraded to the current version (3.6).
- Make sure that all connections to the Galaxy database are closed before migrating the database.
- Only the following (previous) Application Server Galaxy versions can be migrated to version 3.6:
 - Version 3.0 SP2
 - Version 3.1
 - Version 3.1 SP1
 - Version 3.1 SP2
 - Version 3.1 SP2 Patch 01
 - Version 3.1 SP3
 - Version 3.1 SP3 Patch 01
 - Version 3.2
 - Version 3.5

- Version 3.5 Patch 01
- Before migrating your Galaxy, you should clean up your Galaxy using [Tech Note 930 Wonderware System Platform Clean-up Guide](#).

Galaxy Migration Scenarios

There are two scenarios for migration:

- **Migrate a Galaxy from a Galaxy Backup File:** You have a Galaxy backup (.cab) from one of the supported Application Server older versions and you need to restore and migrate it to a machine that has Application Server 3.6.
- **Migrate an Existing Galaxy After Upgrading Application Server to 3.6:** You have a machine that has an old version of Application Server (and Galaxy) created on it and you want to upgrade the machine to Application Server to Application Server 3.6.

Migrate a Galaxy from a Galaxy Backup File

If you have Galaxy backup file that has been create with supported Application Server old version and you want to migrate that Galaxy to be Application Server 3.6.

1. Copy the Galaxy backup (.cab) file to **Program Files (x86)\ArcestrA\Framework\Bin\BackupGalaxies** folder.

For 32-bit systems copy the backup file to **Program Files\ArcestrA\Framework\Bin\BackupGalaxies**.

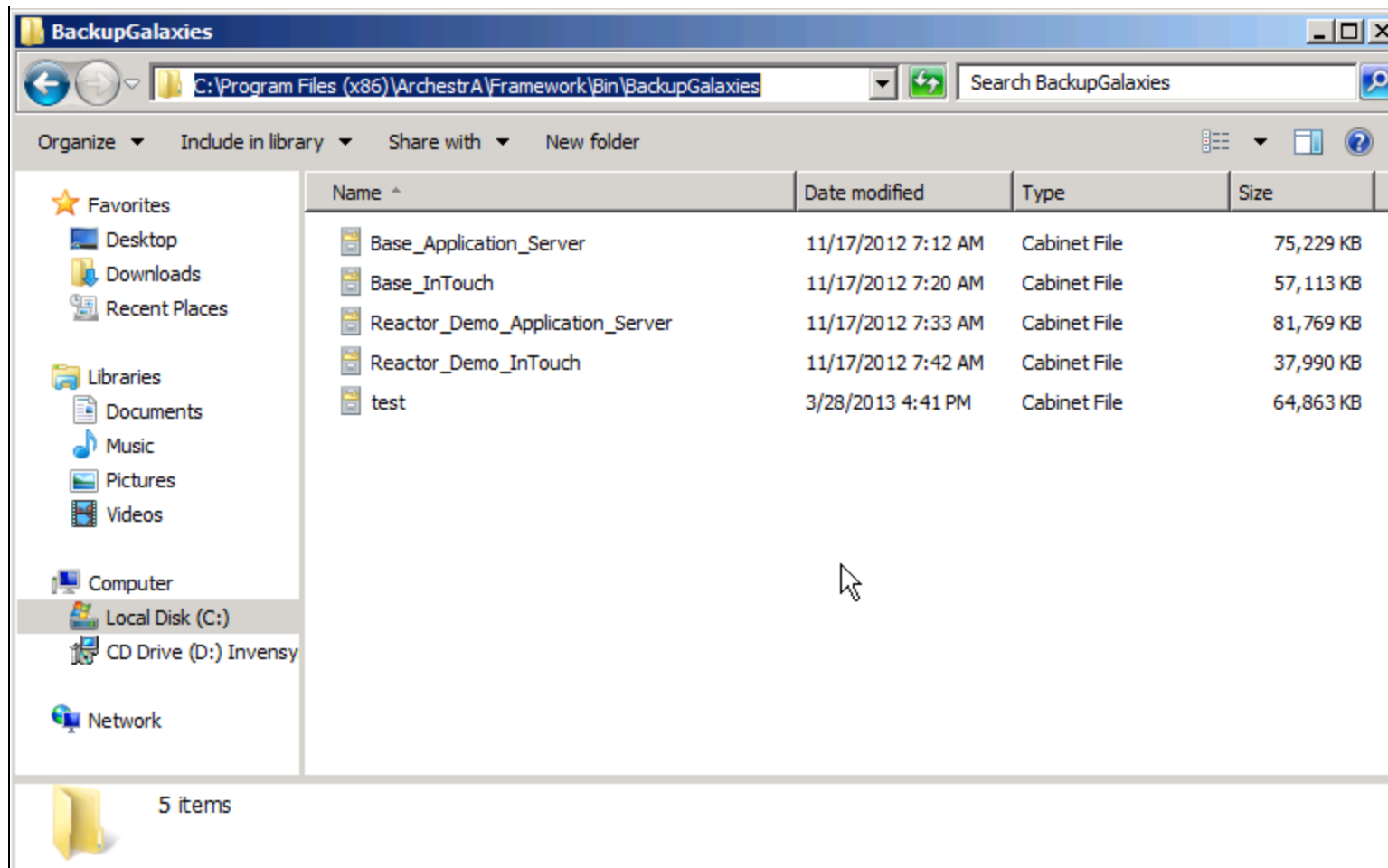


FIGURE 1: GALAXY BACKUP FILE LOCATION

- From the **Start** menu, click Wonderware/Arcestra IDE. The **Connect To Galaxy** window appears.

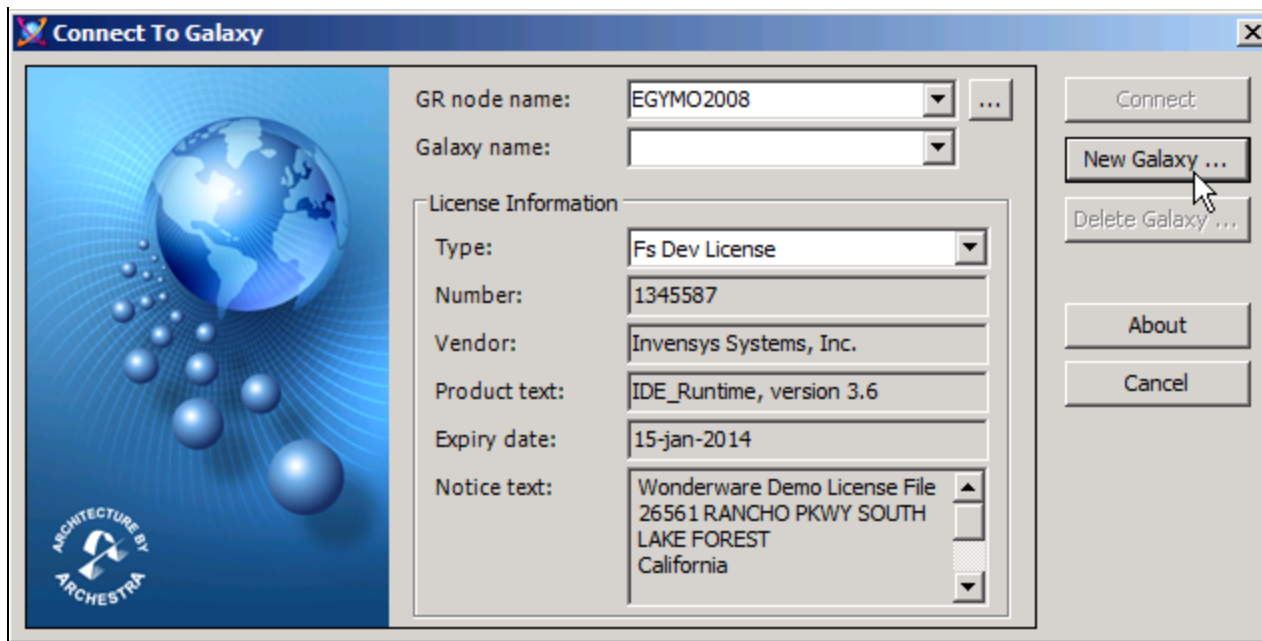


FIGURE 2: CONNECT TO ARCHESTRA IDE

3. Click **New Galaxy** and click the Galaxy backup .cab file from the list.

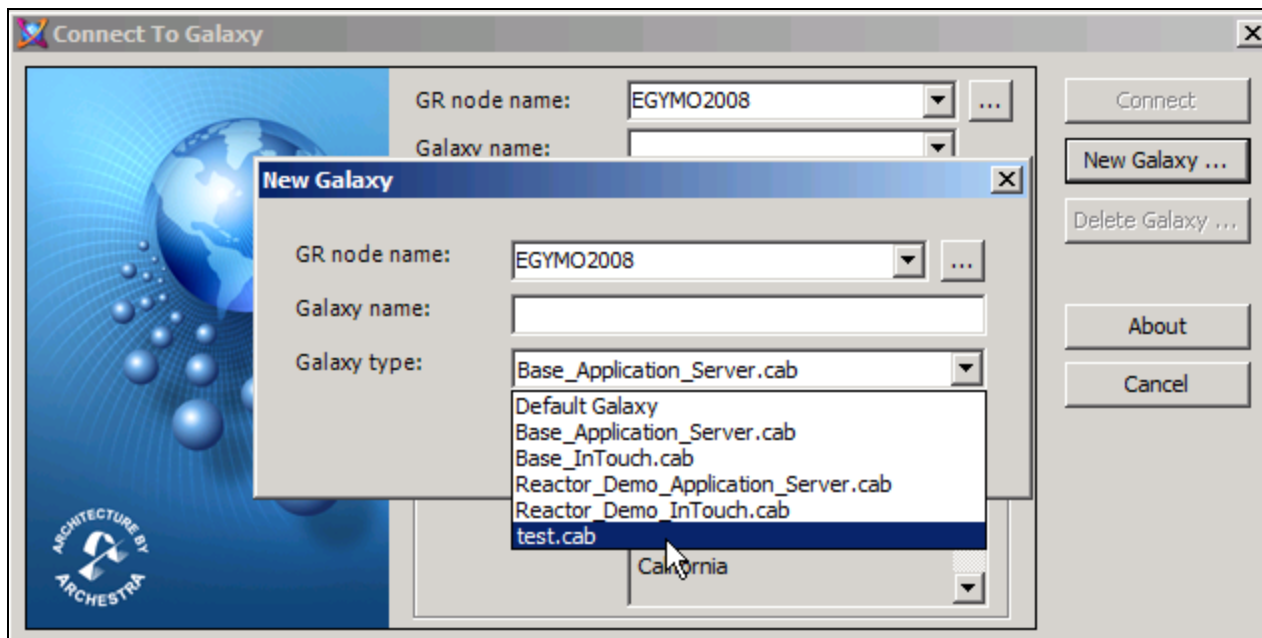


FIGURE 3: NEW GALAXY FROM BACKUP

4. Ensure that you give the new Galaxy the same name as the old Galaxy, then click **Create**.

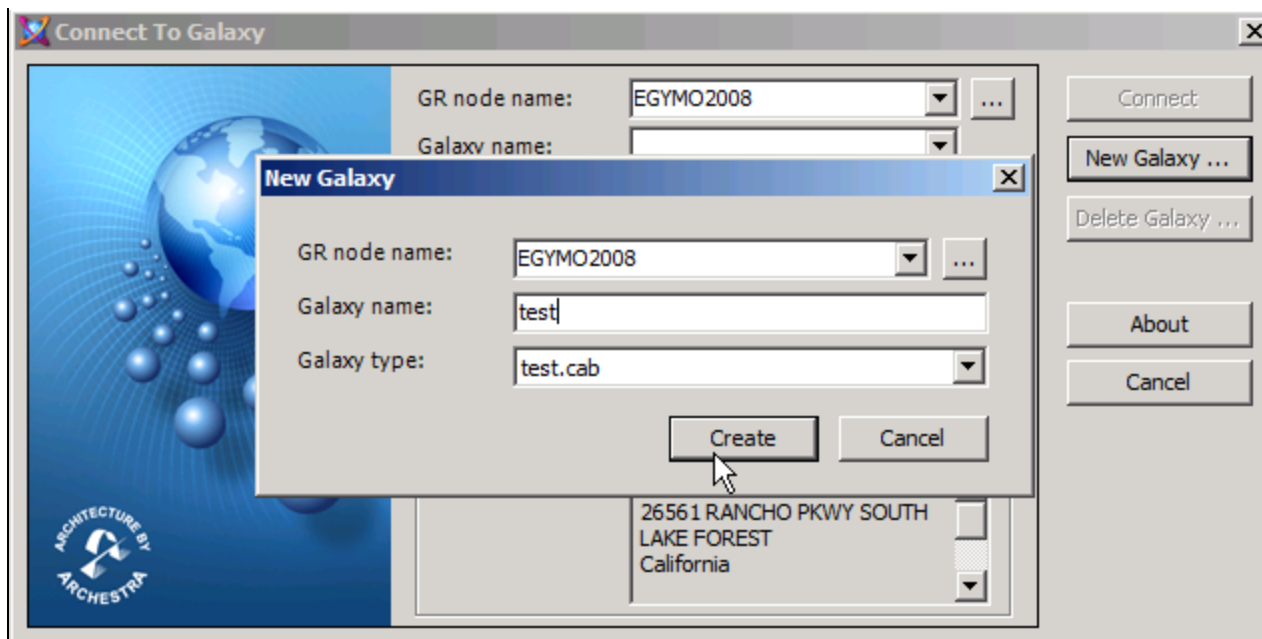


FIGURE 4: NAME THE GALAXY WITH THE OLD GALAXY NAME

5. After the Galaxy Create operation is 100% completed click **Close**.

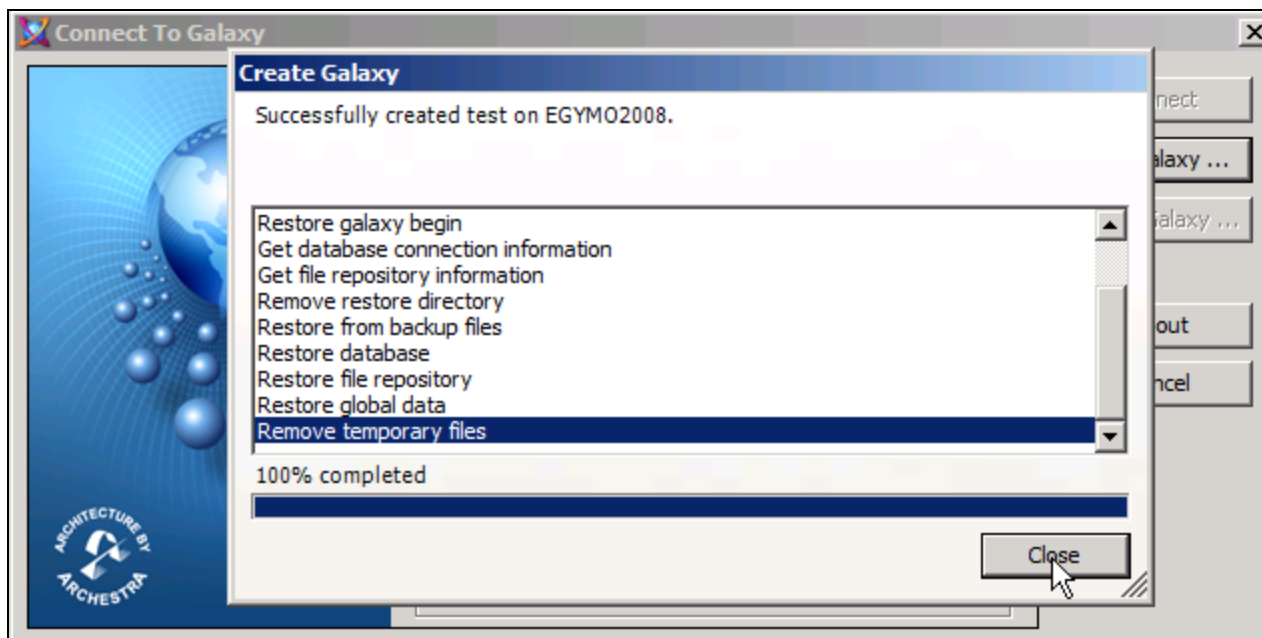


FIGURE 5: CREATE GALAXY OPERATION IS COMPLETED

6. Connect to the new Galaxy.

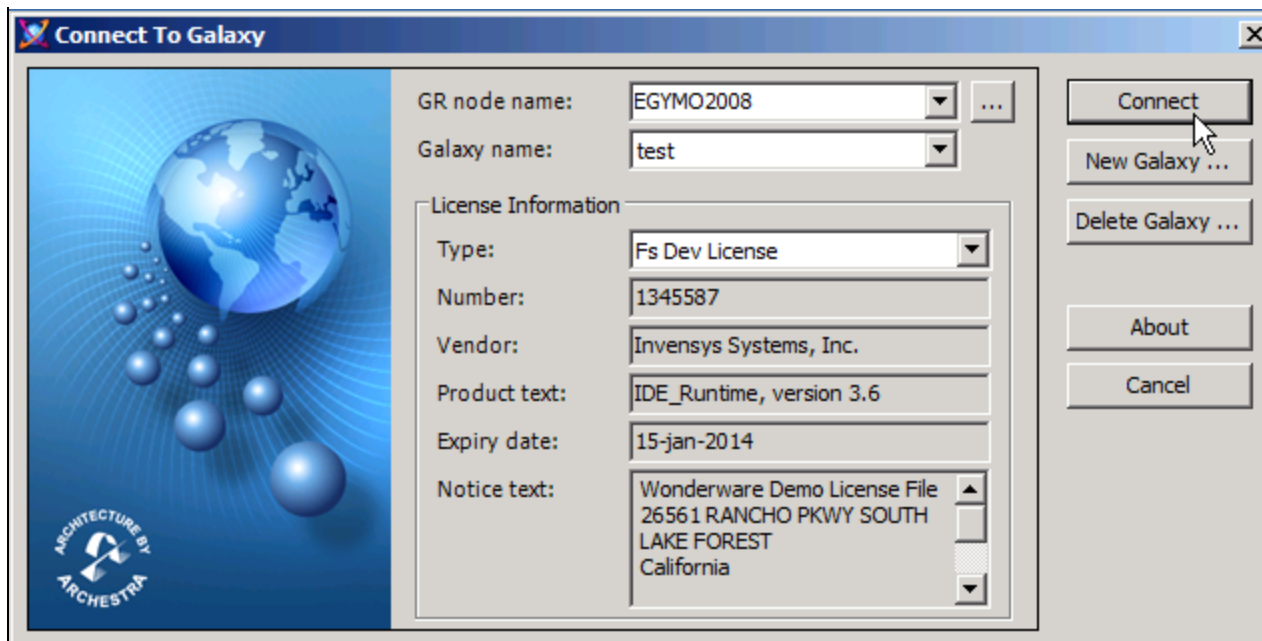


FIGURE 6: CONNECT TO THE NEW GALAXY

When you click **Connect** you will see the following message. Click **Yes** to start the migration.

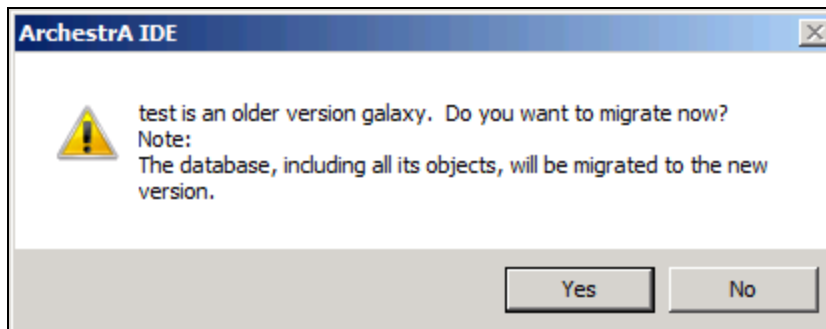


FIGURE 7: ARCESTRA IDE MIGRATION MESSAGE

7. Wait until the Galaxy migration is finished.

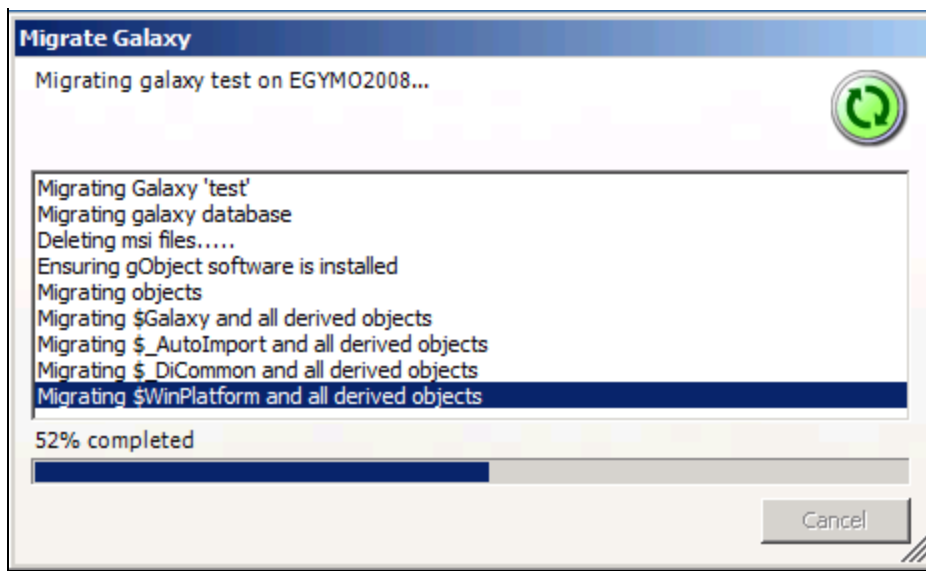


FIGURE 8: MIGRATION IN PROGRESS

8. After the migration is **Done** click **Close**.

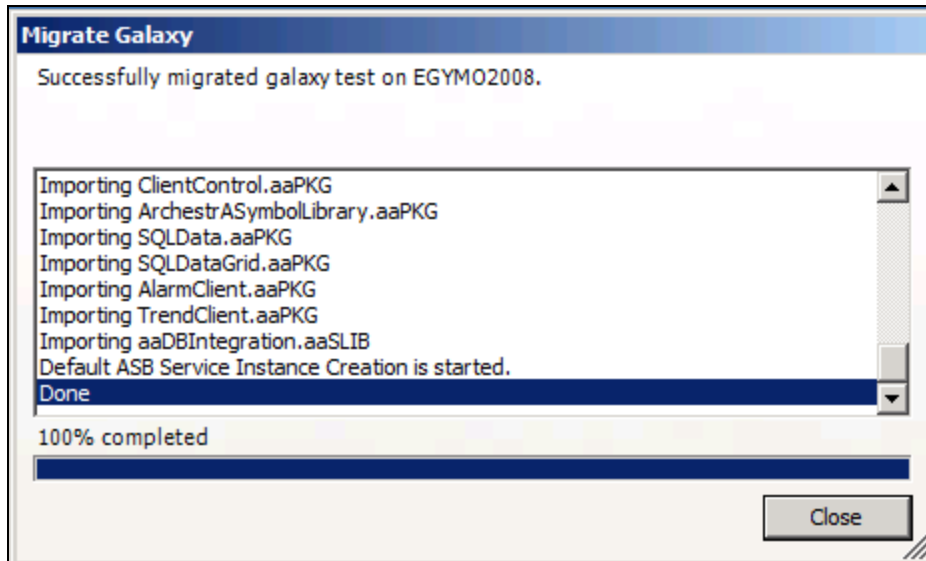


FIGURE 9: MIGRATION DONE

9. The new Galaxy version opens in the IDE.

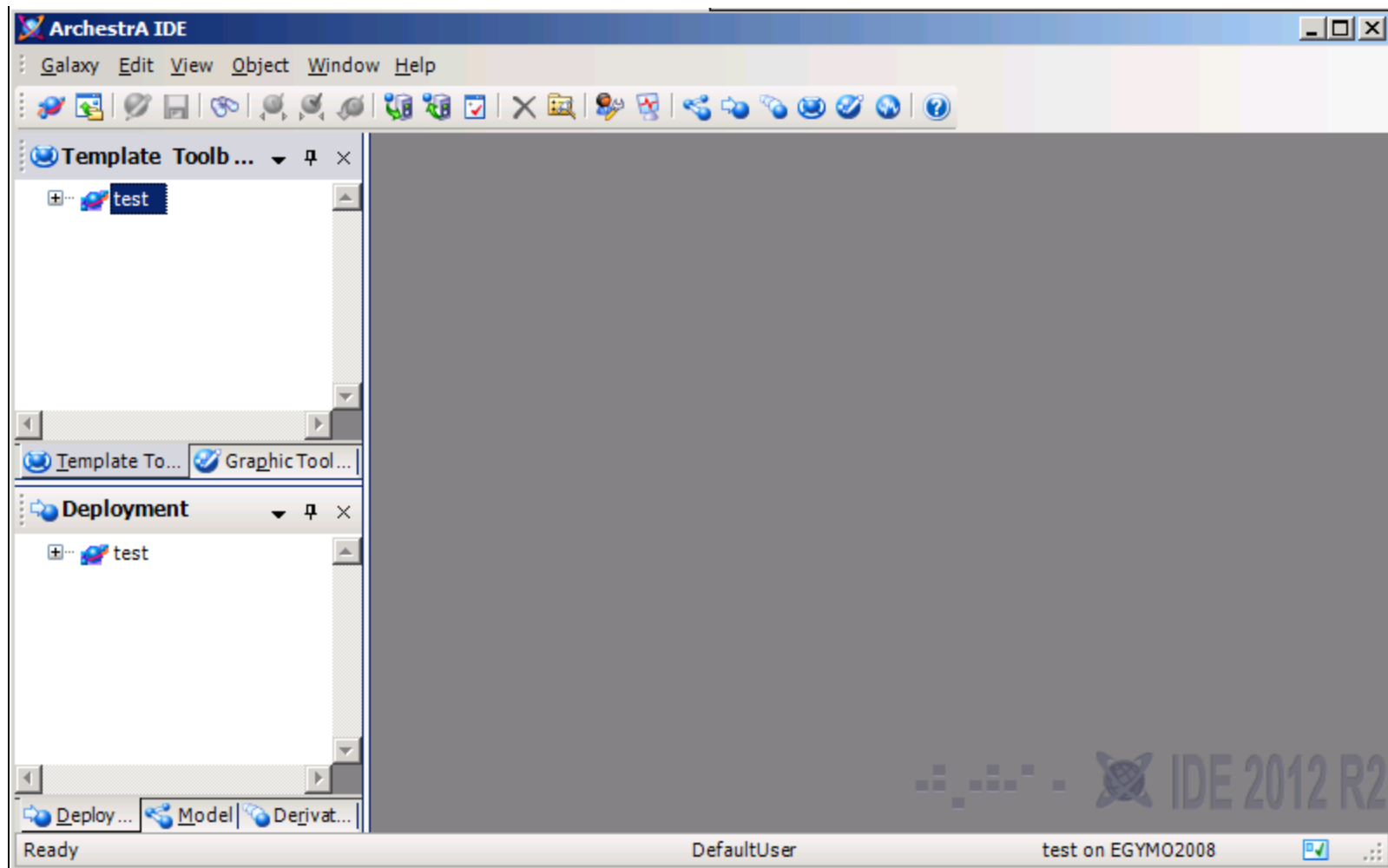


FIGURE 10: NEW GALAXY IN THE IDE

Migrate an Existing Galaxy After Upgrading Application Server to 3.6

After upgrading Application Server from a supported old version to 3.6, complete the following steps to migrate the Galaxy.

1. From the **Start** menu, click **Wonderware/ArcestrA IDE**.

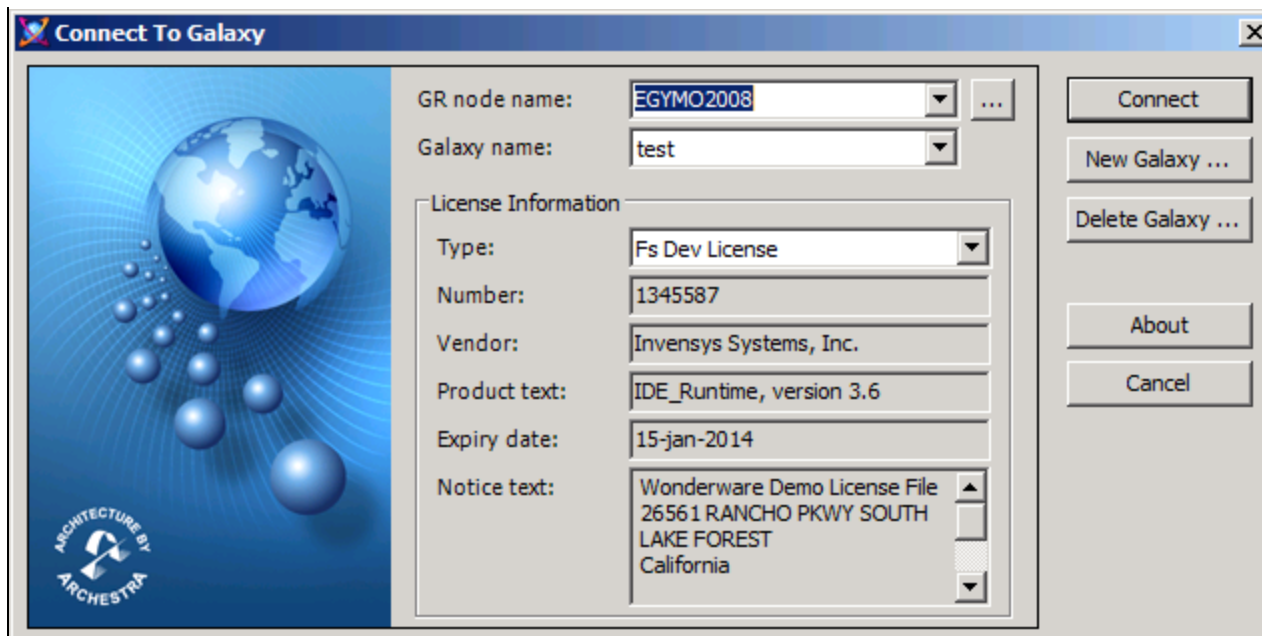


FIGURE 11: CONNECT TO A GALAXY

2. Select your Galaxy from the **Galaxy name** list and click **Connect**.

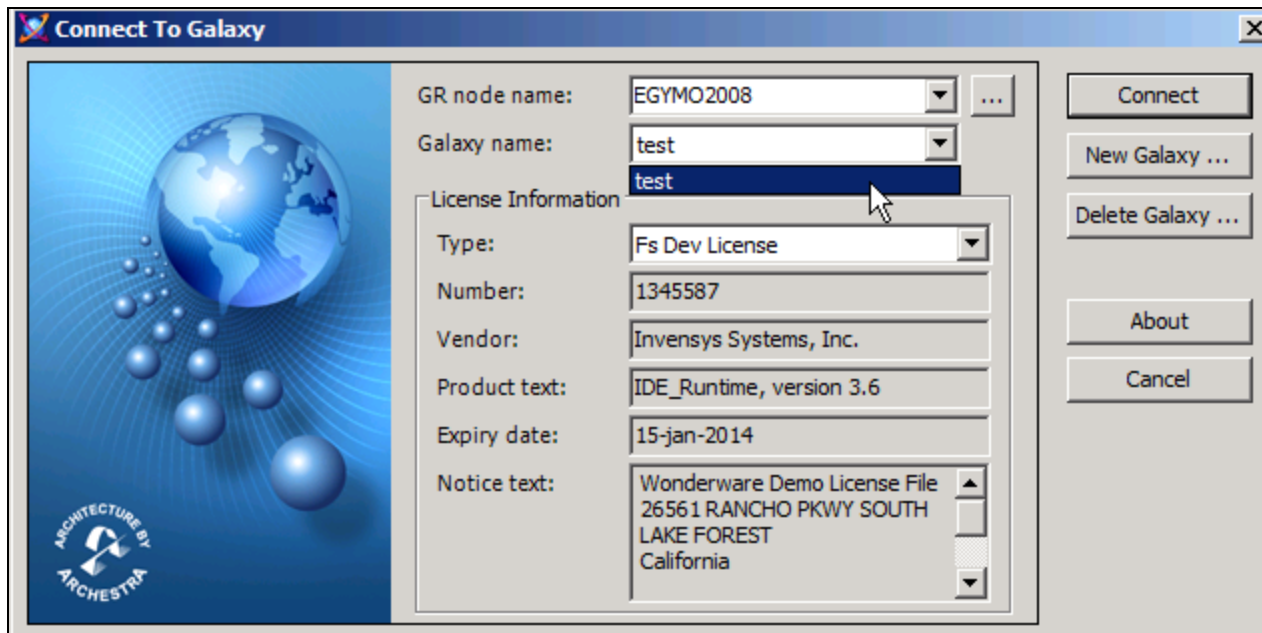


FIGURE 12: CONNECT TO THE GALAXY

3. The following message appears. Click **Yes** to migrate the Galaxy.

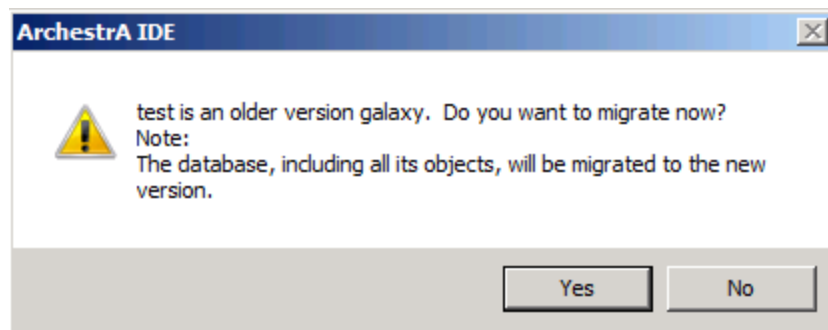


FIGURE 13: ARCHESTRA IDE MIGRATION MESSAGE

4. Wait until the Galaxy migration is finished.

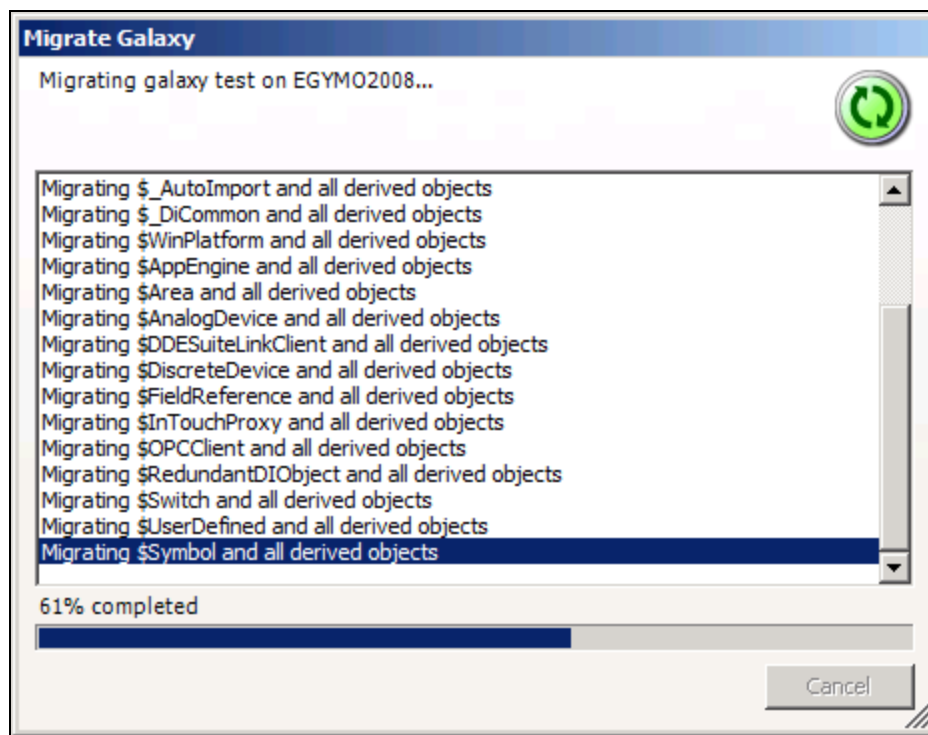


FIGURE 14: MIGRATION IN PROGRESS

5. After the migration is finished, click **Close**.

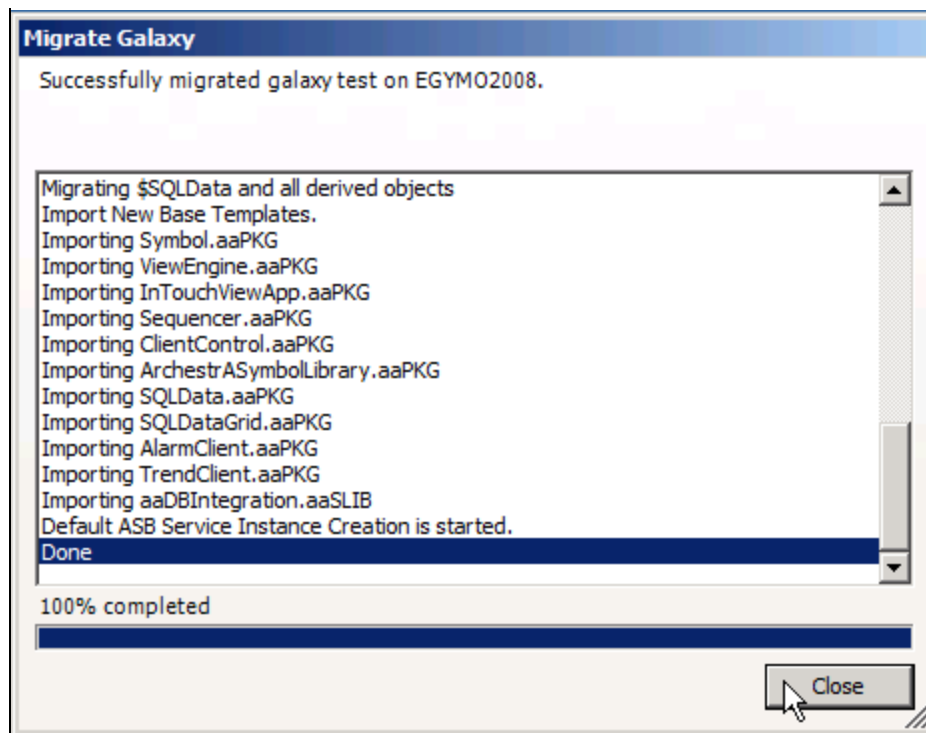


FIGURE 15: MIGRATION DONE

The new Galaxy version opens in the IDE.

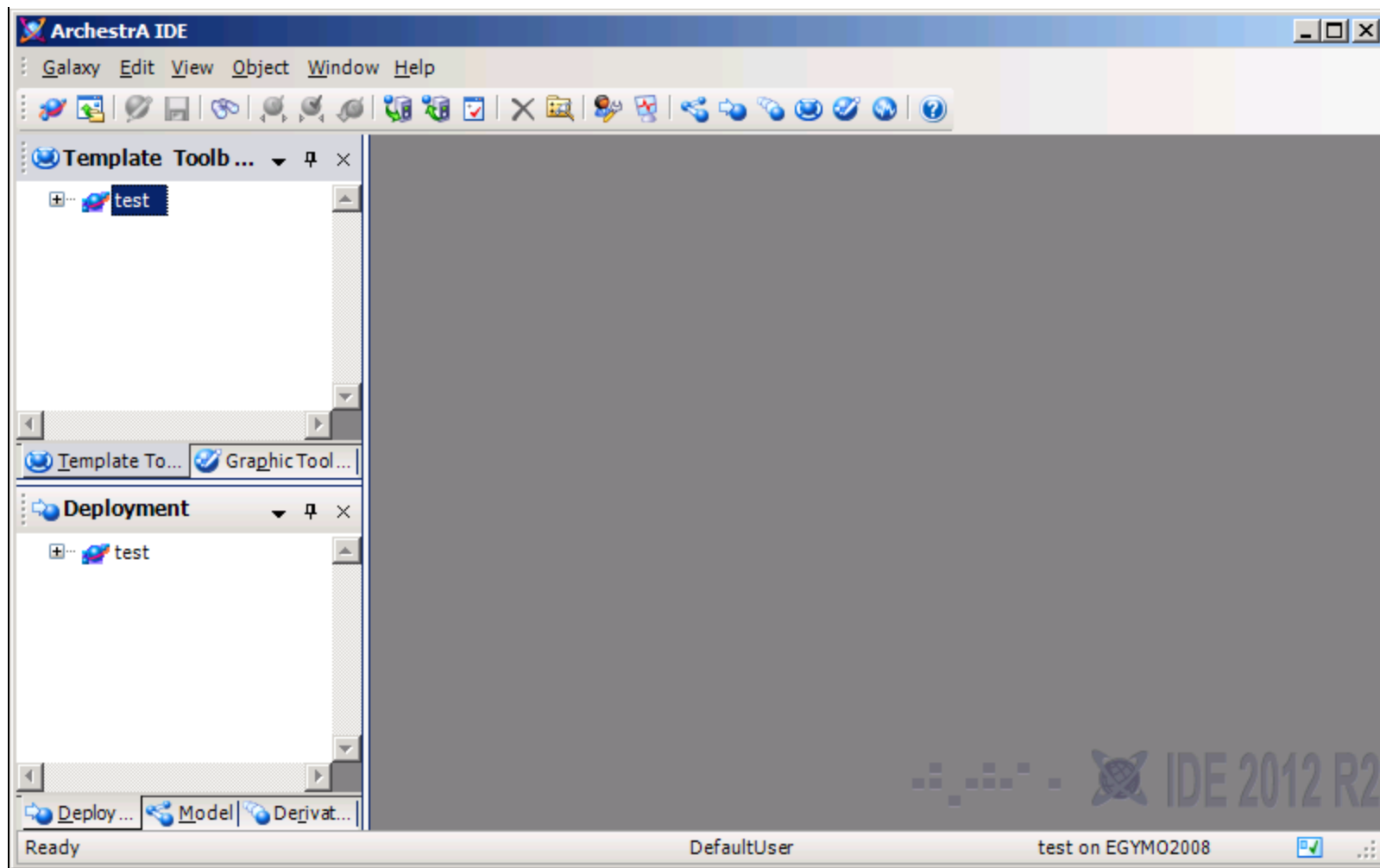


FIGURE 16: NEW GALAXY IN THE IDE

Possible Issues

You might encounter the following issues during or after the Galaxy migration.

After the migration, if you discover that some objects lose their derivation from properties, complete the following steps.

1. Export the templates and instances that are having the issue from the old Galaxy version.
2. Import the package to a new temp Galaxy on Wonderware Application Server 3.6.
3. Export the templates and instances from the new temp Galaxy.
4. Migrate the original Galaxy and delete the templates and instances that are not migrated.
5. Import the package created from step 3 (above) to the new Galaxy.

M. Salah

Tech Notes are published occasionally by Wonderware Technical Support. Publisher: Invensys Systems, Inc., 26561 Rancho Parkway South, Lake Forest, CA 92630. There is also technical information on our software products at [Wonderware Technical Support](#).

For technical support questions, send an e-mail to wwsupport@invensys.com.



[Back to top](#)

©2013 Invensys Systems, Inc. All rights reserved. No part of the material protected by this copyright may be reproduced or utilized in any form or by any means, electronic or mechanical, including photocopying, recording, broadcasting, or by any information storage and retrieval system, without permission in writing from Invensys Systems, Inc.

[Terms of Use](#).