

[Tech Note 984](#)

Adding IIS Handler Mappings: Checklist

All Tech Notes, Tech Alerts and KBCD documents and software are provided "as is" without warranty of any kind. See the [Terms of Use](#) for more information.

Topic#: 002811

Created: October 2013

Introduction

This *Tech Note* is the first in a series of Diagnostic Tech Notes focused on IIS Handler Mapping issues. See the [References section](#) at the end of this *Tech Note* for links.

Application Versions

- Wonderware Information Server 2012 R2 (5.x)
- Windows 2008 R2 Server
- Windows 2008 SP2

Problem

Opening the Data Source Manager or Report Manager from the WIS Administration tab, AFWeb and related reports can fail. This issue can also cause live data in Published Graphics to fail.

Cause

Wonderware Support has discovered a problem with some machines using IIS 7.x: There are some missing Handler Mappings to .NET Framework 4.0.

Note: This issue happens only on WIS 5.0 (System Platform 2012 R2). In WIS 5.0, the Wonderware Application Pool uses the .NET Framework Version 4.0.

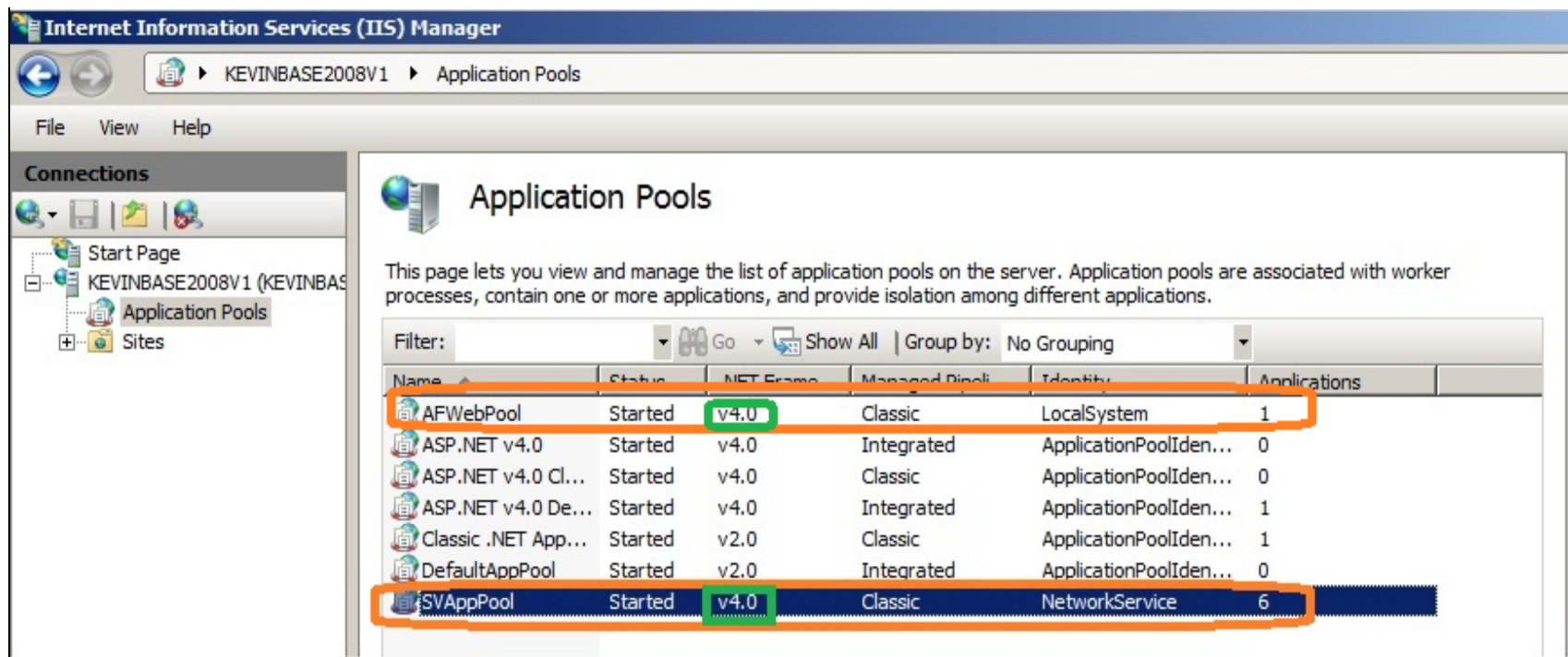


FIGURE 1: APPLICATION POOLS USING .NET VERSION 4.0

The following sections describe the configuration steps to provide Handler Mappings for the Wonderware and AFWeb virtual directories using IIS 7.x.

Solution For Wonderware Virtual Directory

1. On the WIS Server, click **Start/Run** and type **Iinetmgr**.
2. Highlight the **Wonderware** virtual directory
3. Double-click **Handler Mappings** in the right pane.
4. Right-click any blank area and click **Add Script Map** (Figure 2 below).

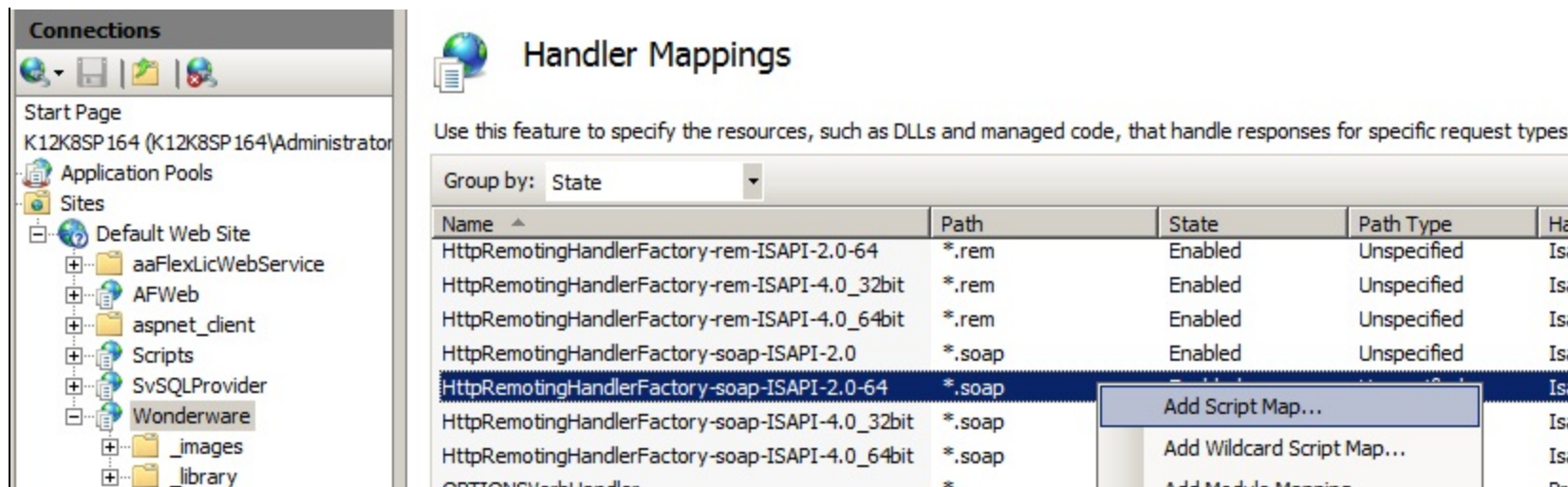


FIGURE 2: ADD SCRIPT MAP

5. Type the following information (Figure 3 below):

- Request Path = ***.aspx**
- Executable = **%windir%\Microsoft.NET\Framework\v4.0.30319\aspnet_isapi.dll**
- Name = **PageHandlerFactory-ISAPI-4.0_32bit**

6. Click **OK**.

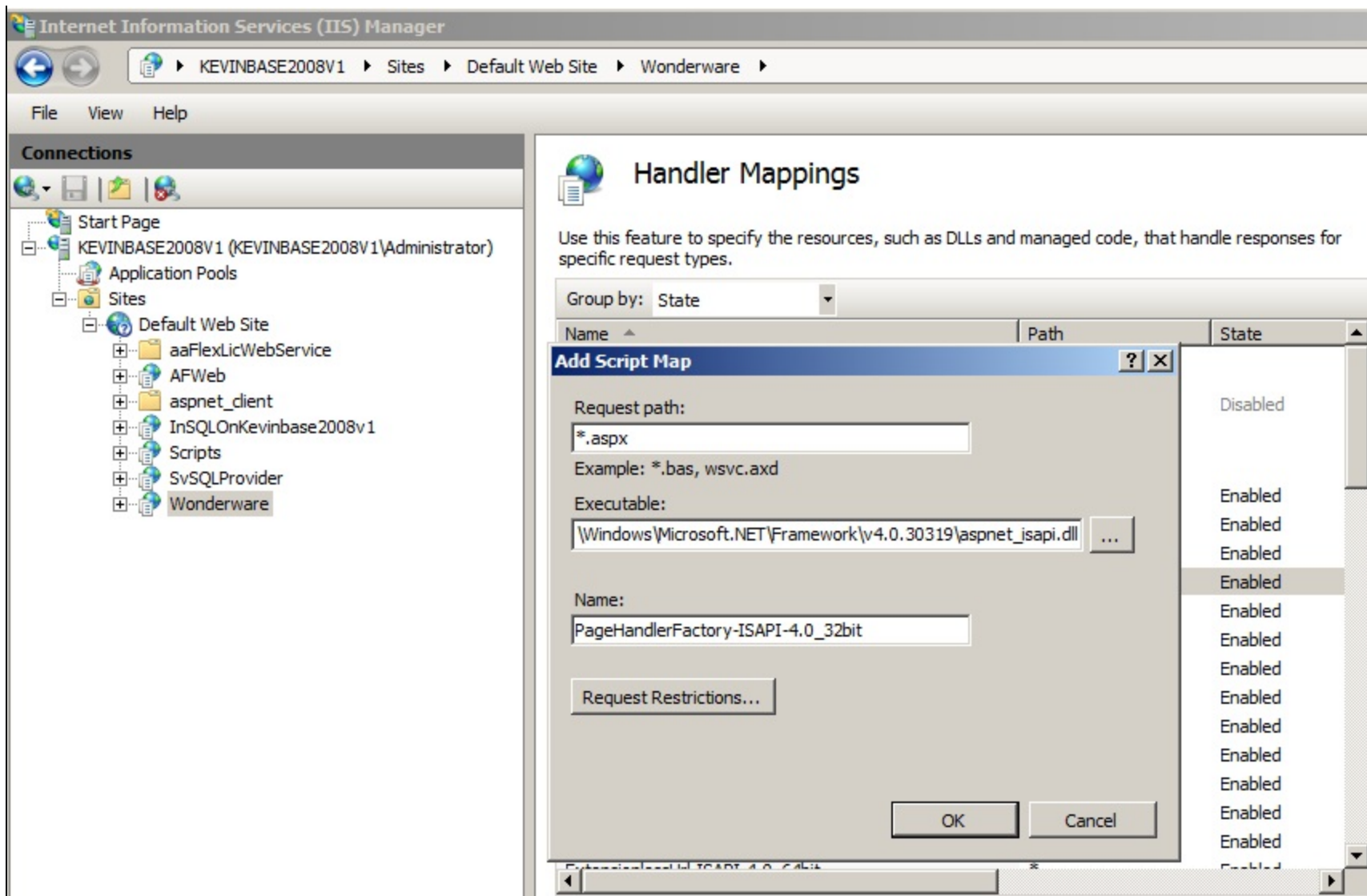


FIGURE 3: ADD SCRIPT MAP

7. Click **Yes**.

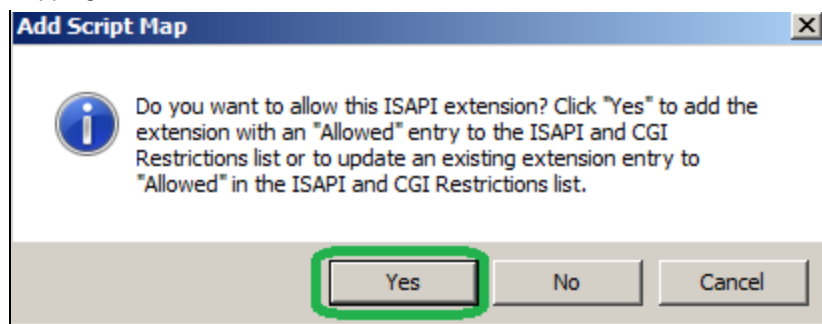


FIGURE 4: ADD THE ISAPI EXTENSION

8. Repeat steps 1-7 above with the following information for Step 5 (Figure 5 below).

- Requested Path = ***.aspx**
- Executable = **%windir%\Microsoft.NET\Framework64\v4.0.30319\aspnet_isapi.dll**
- Name = **PageHandlerFactory-ISAPI-4.0_64bit**

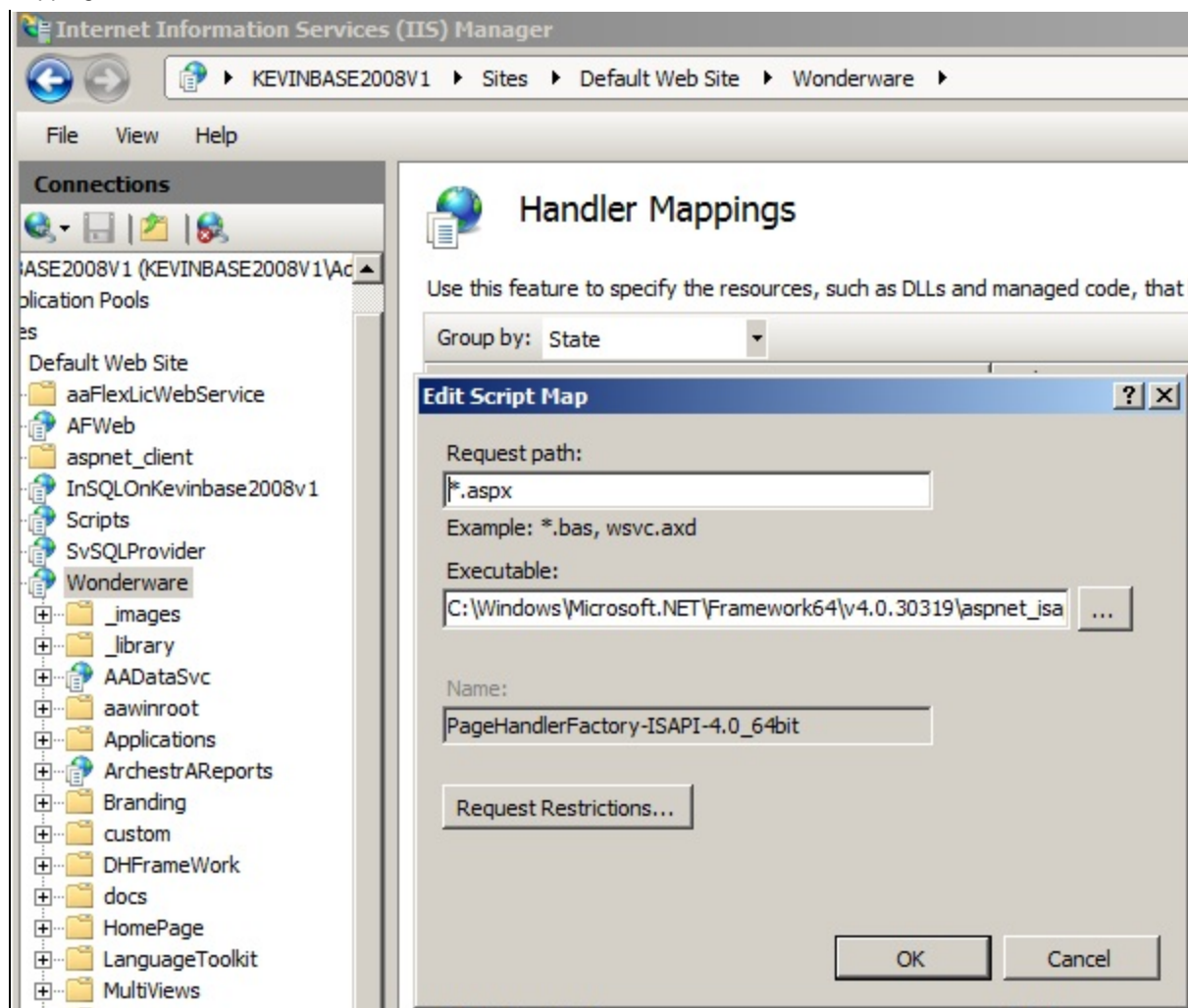


FIGURE 5: PAGEHANDLERFACTORY MAPPING

9. Repeat steps 1-7 above with the following information for Step 5 (Figure 6 below).

- Requested Path = ***.axd**
- Executable = **c:\Windows\Microsoft.NET\Framework\v4.0.30319\aspnet_isapi.dll**
- Name = **AXD-ISAPI-4.0_32bit**

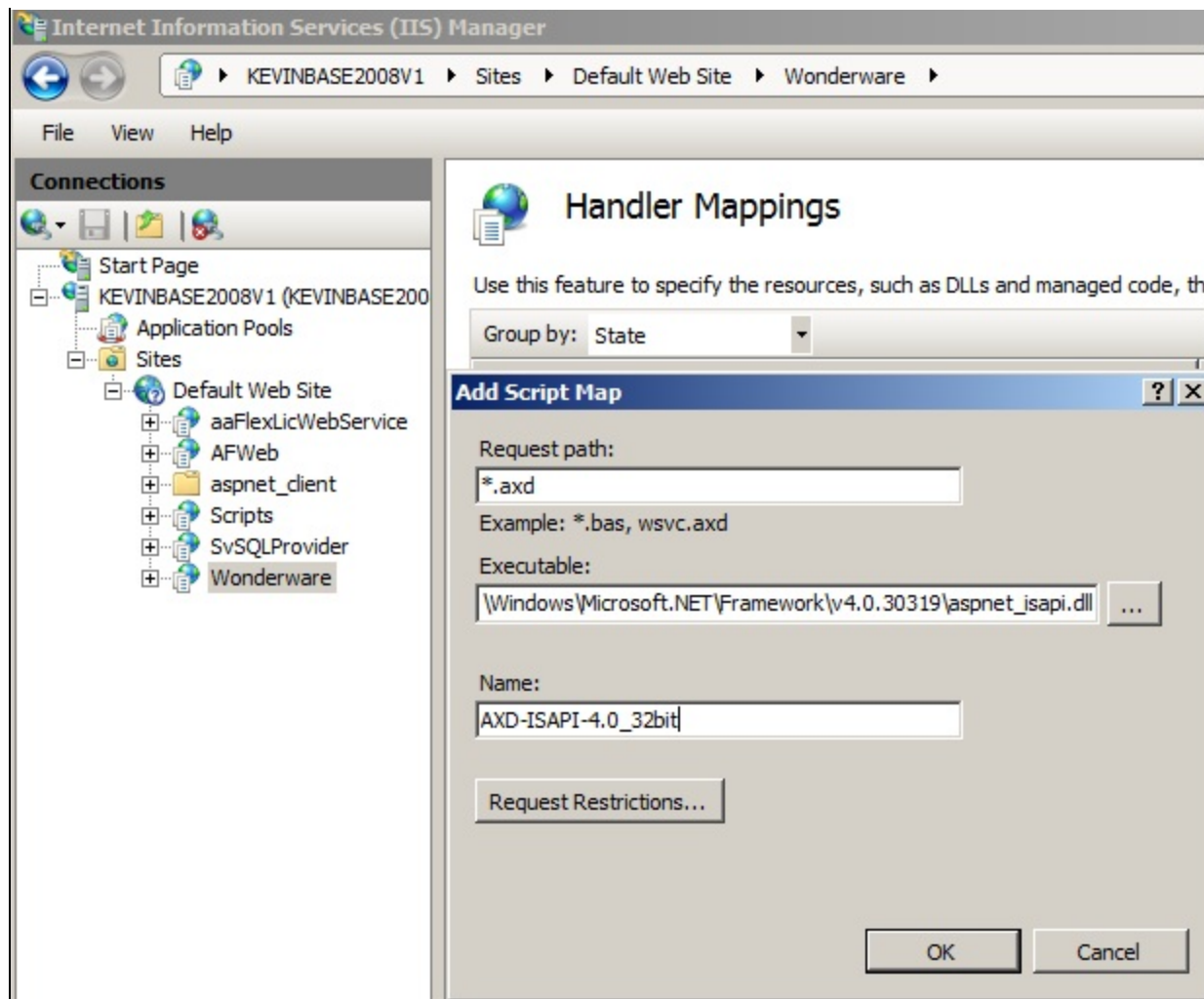


FIGURE 6: AXD-ISAPI MAPPING

10. Repeat steps 1-7 above with the following Information for Step 5 (Figure 7 below).

- Requested Path = ***.axd**
- Executable = **C:\Windows\Microsoft.NET\Framework64\v4.0.30319\aspnet_isapi.dll**
- Name = **AXD-ISAPI-4.0_64bit**

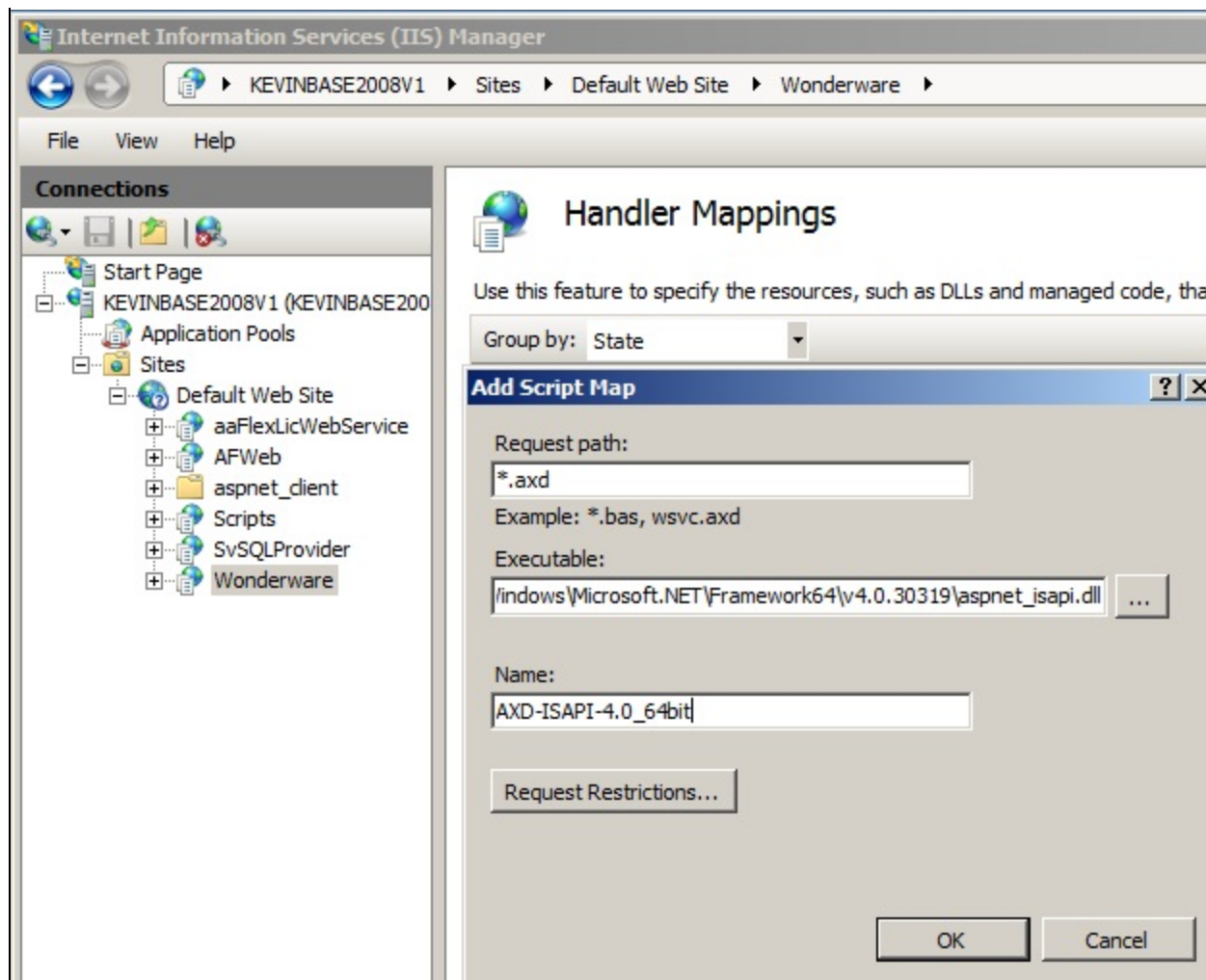


FIGURE 7: AXD-ISAPI MAPPING

11. Repeat steps 1-7 above with the following Information for Step 5 (Figure 8 below).

- Requested Path = ***.asmx**
- Executable = **C:\Windows\Microsoft.NET\Framework\v4.0.30319\aspnet_isapi.dll**
- Name = **WebServiceHandlerFactory-ISAPI-4.0_32bit**

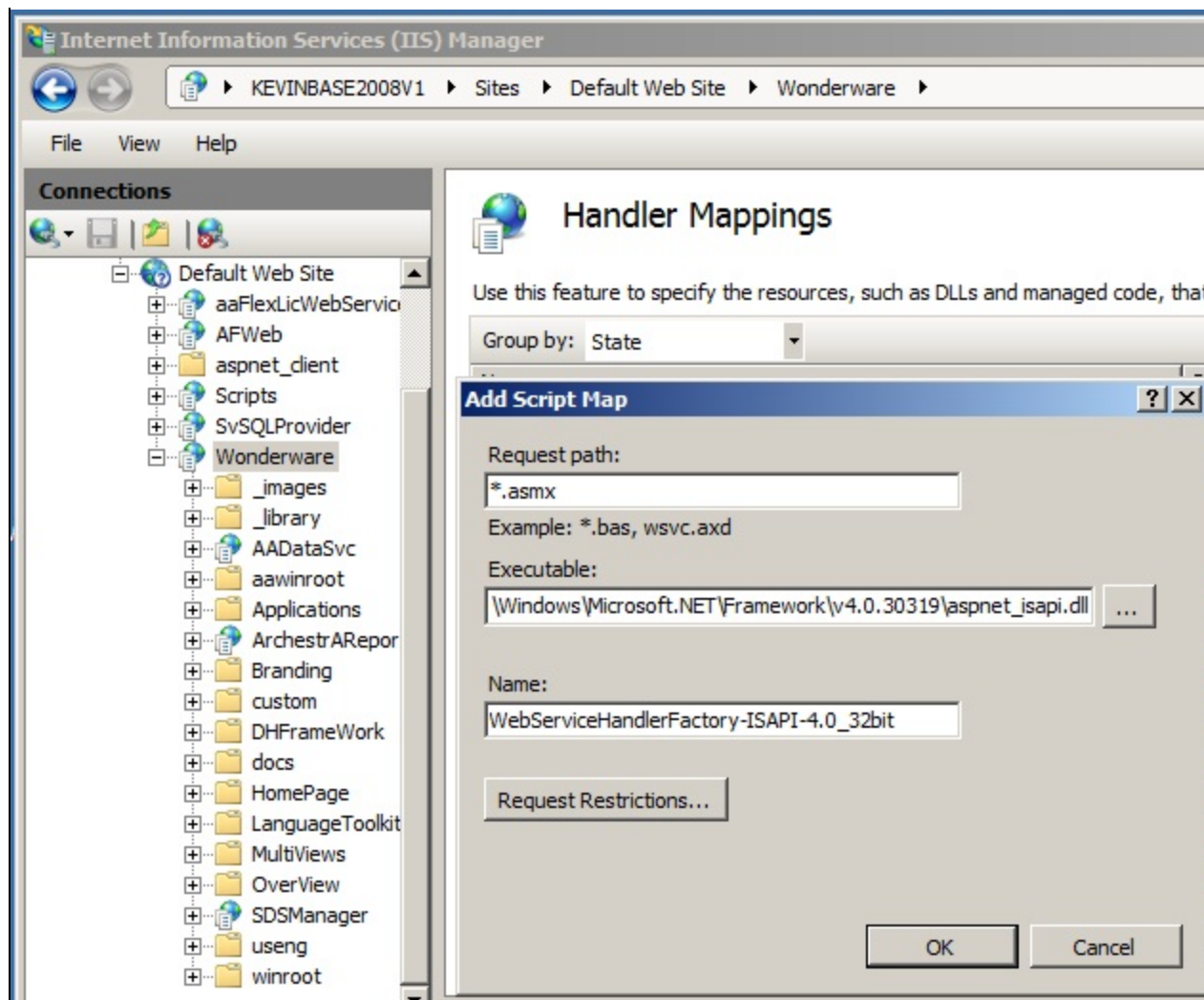


FIGURE 8: WEBSERVICEHANDLERFACTORY MAPPING

12. Repeat steps 1-7 above with the following Information for Step 5 (Figure 9 below).

- Requested Path = ***.asmx**
- Executable = **C:\Windows\Microsoft.NET\Framework64\v4.0.30319\aspnet_isapi.dll**
- Name = **WebServiceHandlerFactory-ISAPI-4.0_64bit**

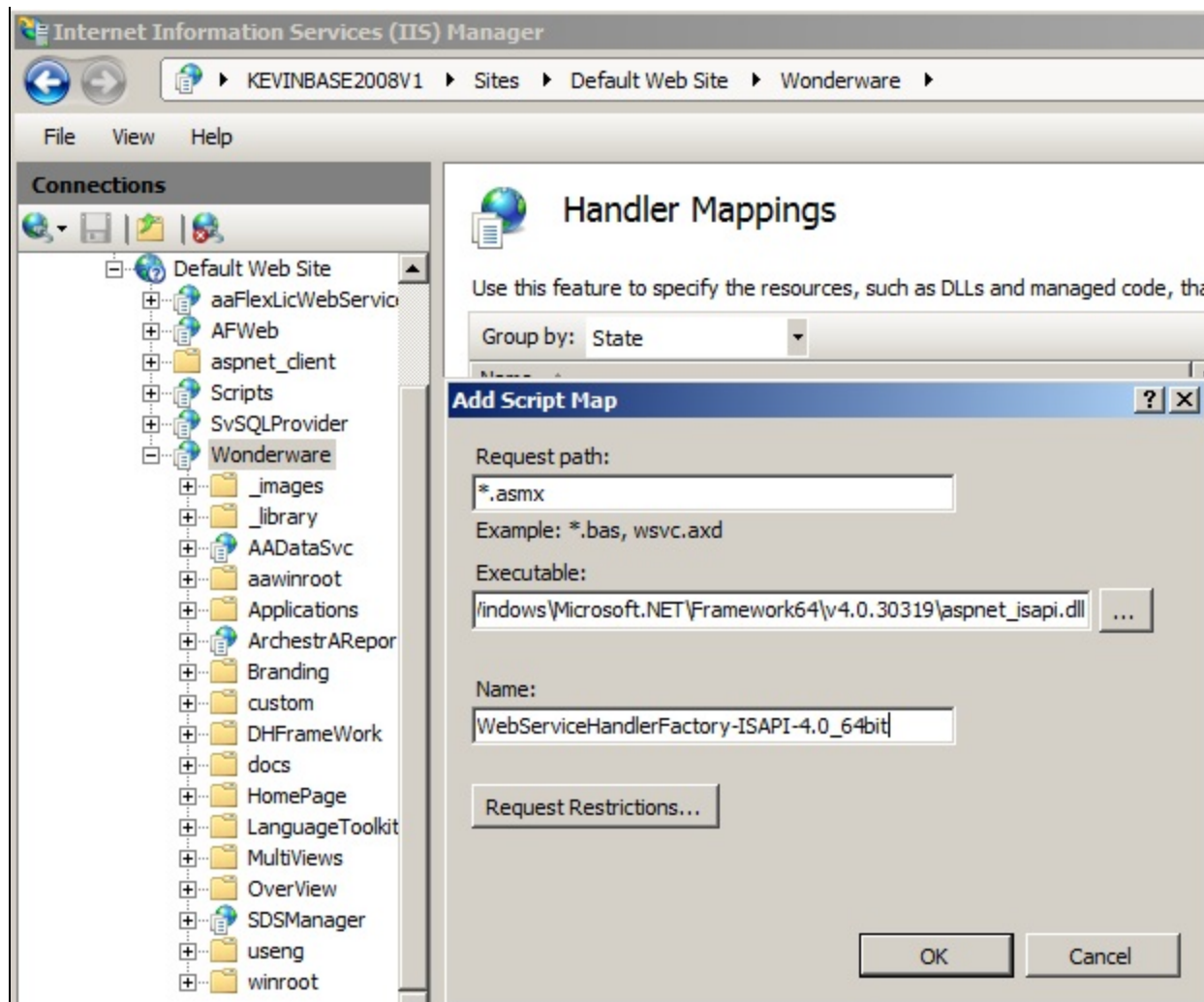


FIGURE 9: WEBSERVICEHANDLERFACTORY MAPPING

13. Repeat steps 1-7 above with the following Information for **Step 5**.

- Requested Path = *.svc
- Executable = C:\Windows\Microsoft.NET\Framework\v4.0.30319\aspnet_isapi.dll
- Name = **svc-ISAPI-4.0_32bit**

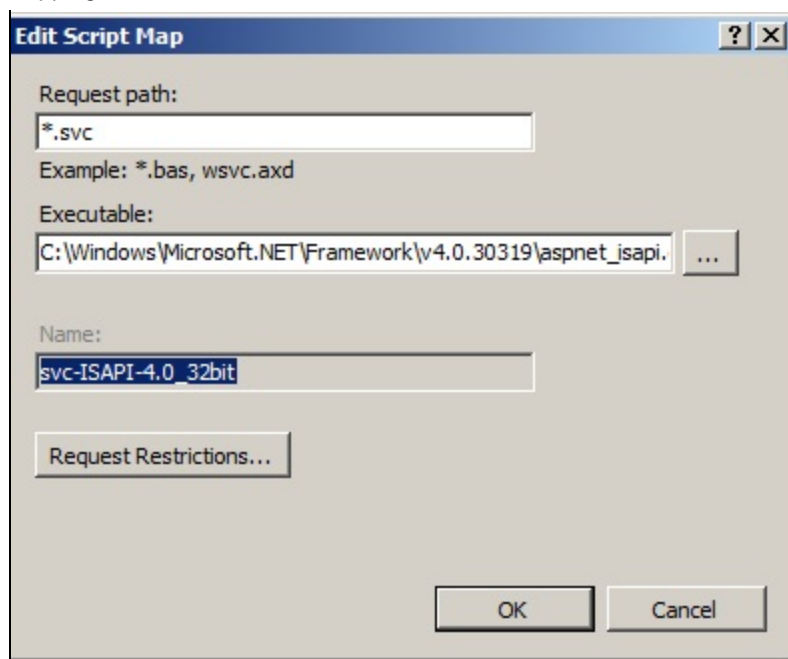


FIGURE 10: ISAPI 32-BIT

14. Repeat steps 1-7 above with the following Information for **Step 5**.

- Requested Path = ***.svc**
- Executable = C:\Windows\Microsoft.NET\Framework64\v4.0.30319\aspnet_isapi.dll
- Name = **svc-ISAPI-2.0-64**

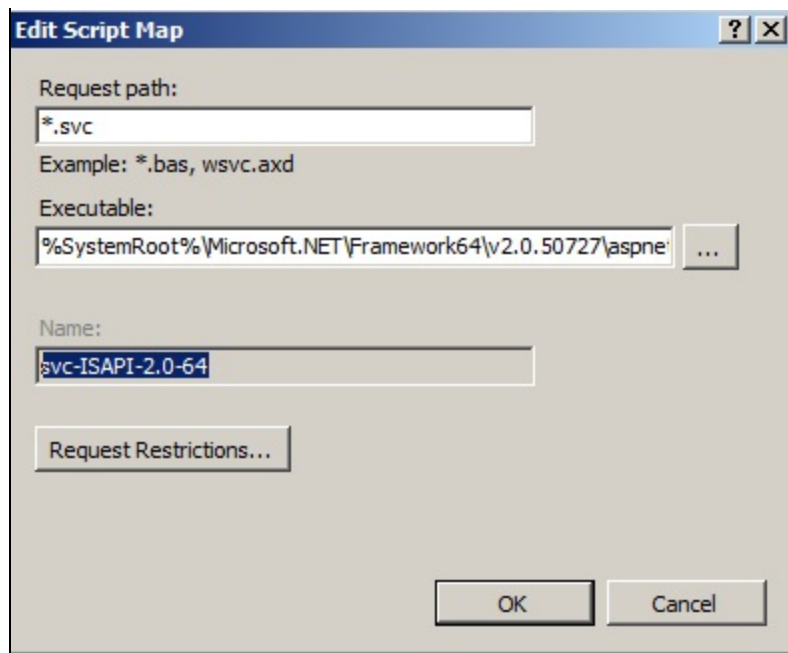


FIGURE 11: ISAPI 64-BIT

Solution For ActiveFactory (AFWeb) Virtual Directory

1. On the WIS Server, click **Start/Run** and type **Inetmgr**.
2. Highlight the **AFWeb** virtual directory.
3. Double-click **Handler Mappings** in the right pane in the **Features** view.
4. Right-click any blank area and click **Add Script Map**.

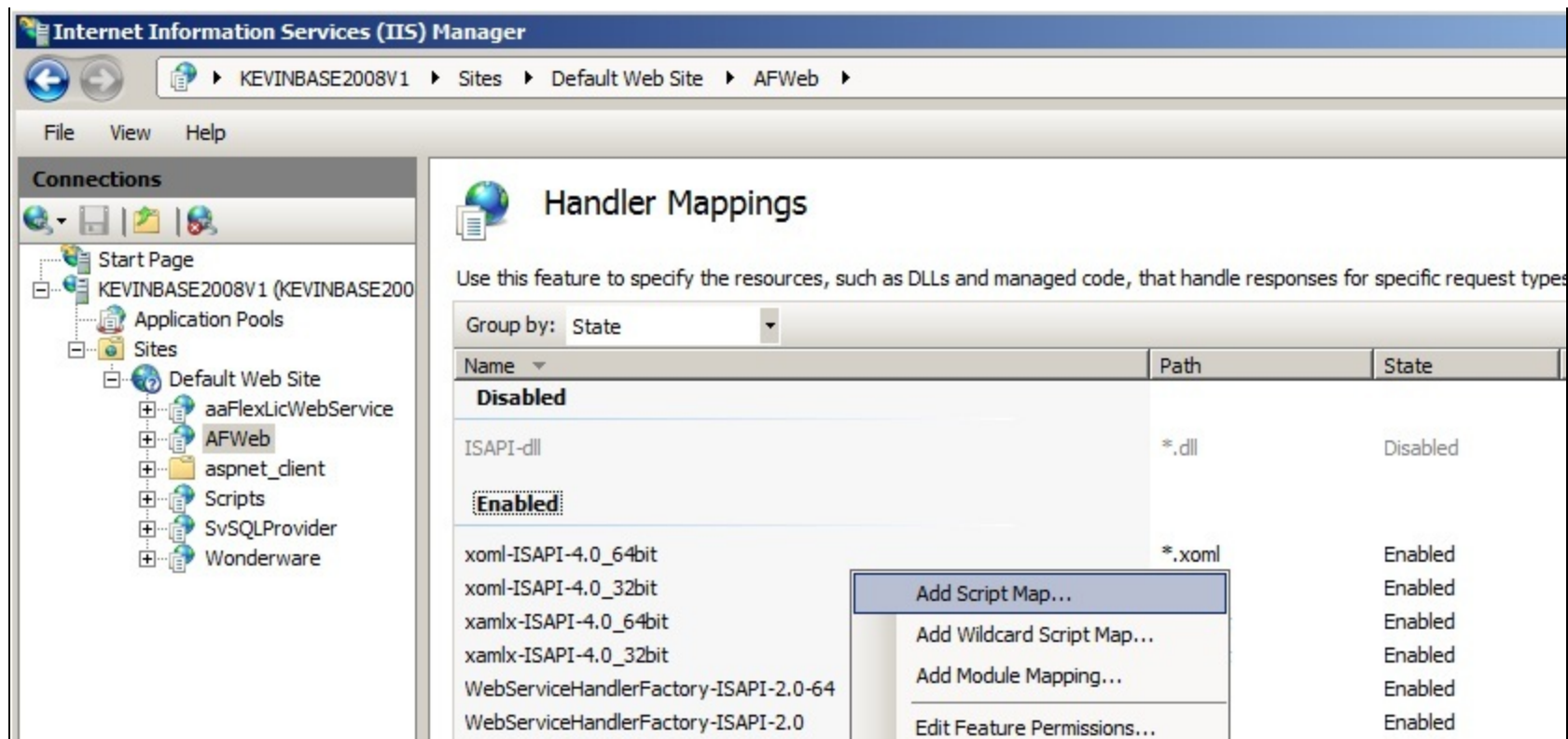


FIGURE 12: ADD SCRIPT MAP

5. Type the following information (Figure 13 below):

- Requested Path = ***.aspx**
- Executable = **%windir%\Microsoft.NET\Framework\v4.0.30319\aspnet_isapi.dll**
- Name = **PageHandlerFactory-ISAPI-4.0_32bit**

6. Click **OK**.

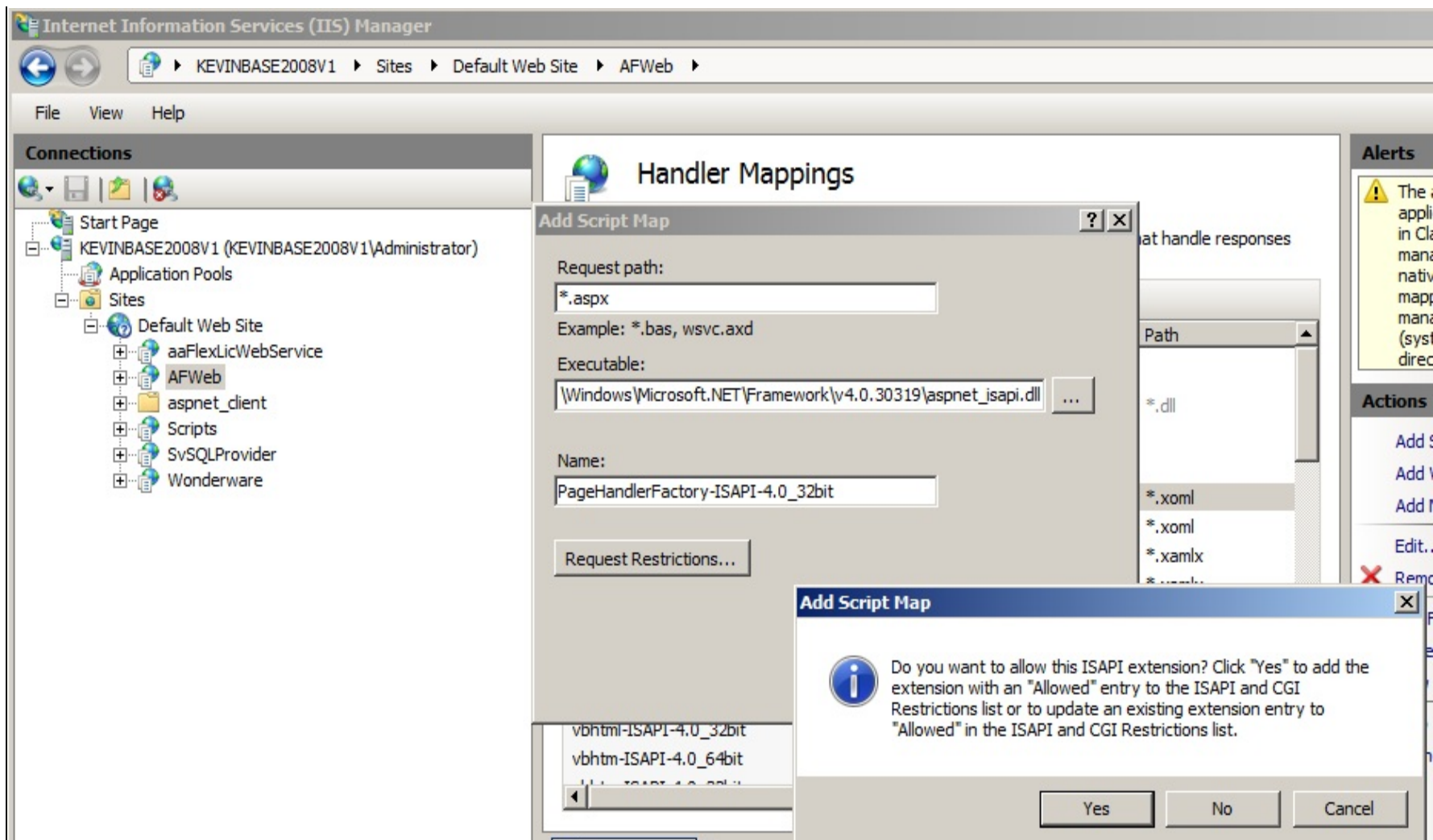


FIGURE 13: PAGEHANDLERFACTORY MAPPING

7. Click **Yes**.

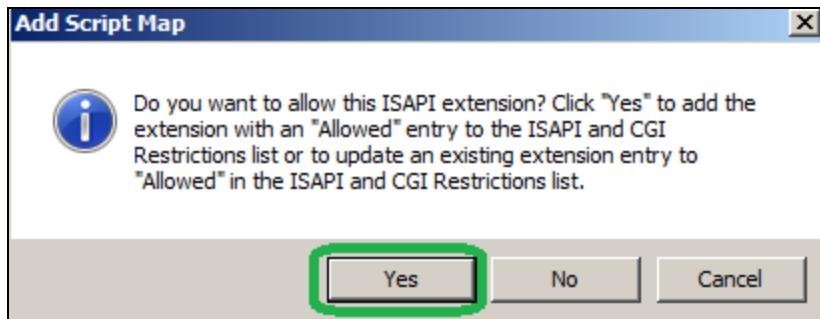
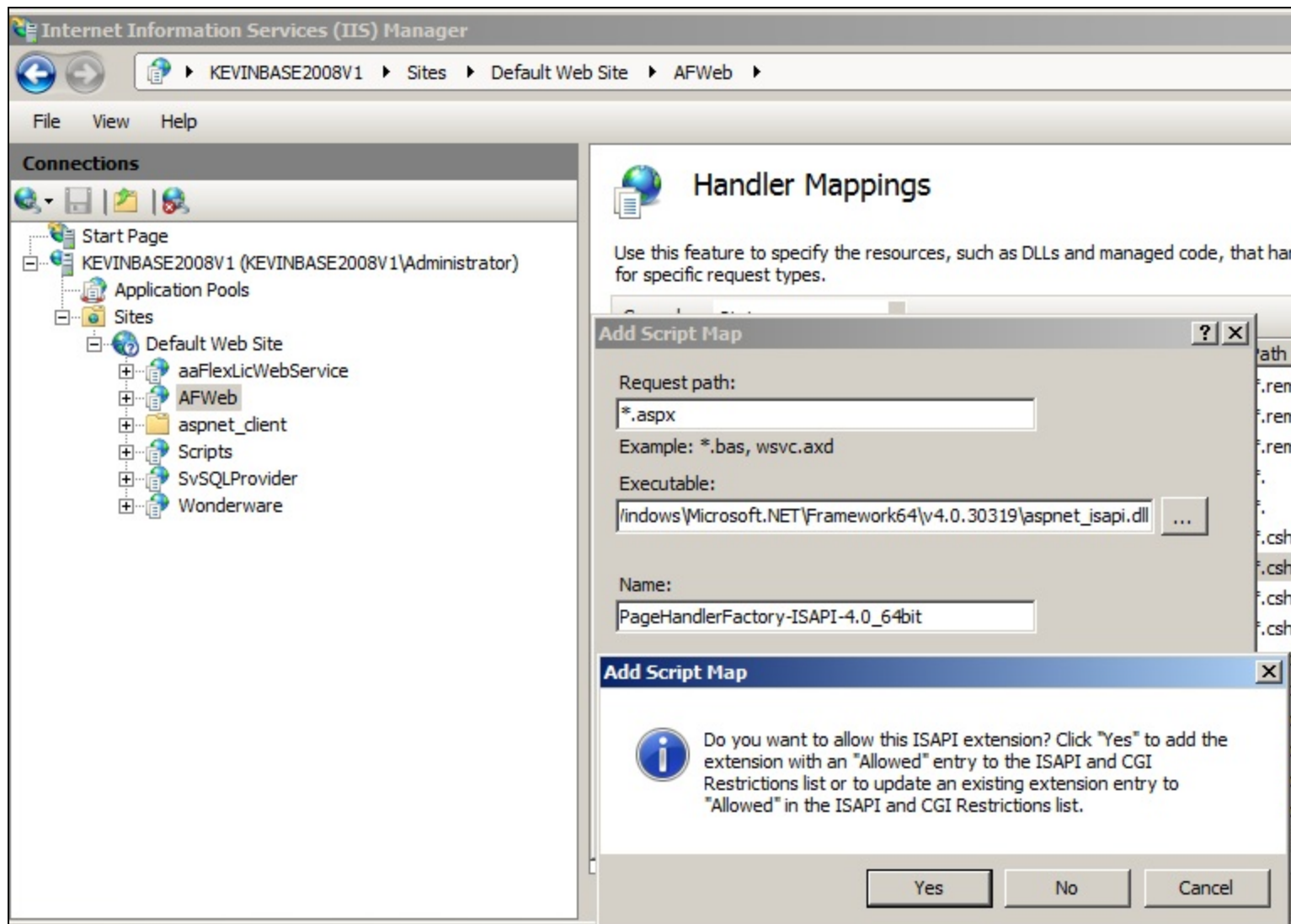


FIGURE 14: ADD THE ISAPI EXTENSION

8. Repeat steps 1-7 above with the following information for Step 5 (Figure 15 below).

- Requested Path = ***.aspx**
- Executable = **%windir%\Microsoft.NET\Framework64\v4.0.30319\aspnet_isapi.dll**
- Name = **PageHandlerFactory-ISAPI-4.0_64bit**

**FIGURE 15: ADD AFWEB PAGEHANDLERFACTORY SCRIPT MAP**

9. Repeat steps 1-7 above with the following information for Step 5 (Figure 16 below).

- Requested Path = ***.axd**
- Executable = **C:\Windows\Microsoft.NET\Framework\v4.0.30319\aspnet_isapi.dll**

- Name = **AXD-ISAPI-4.0_32bit**

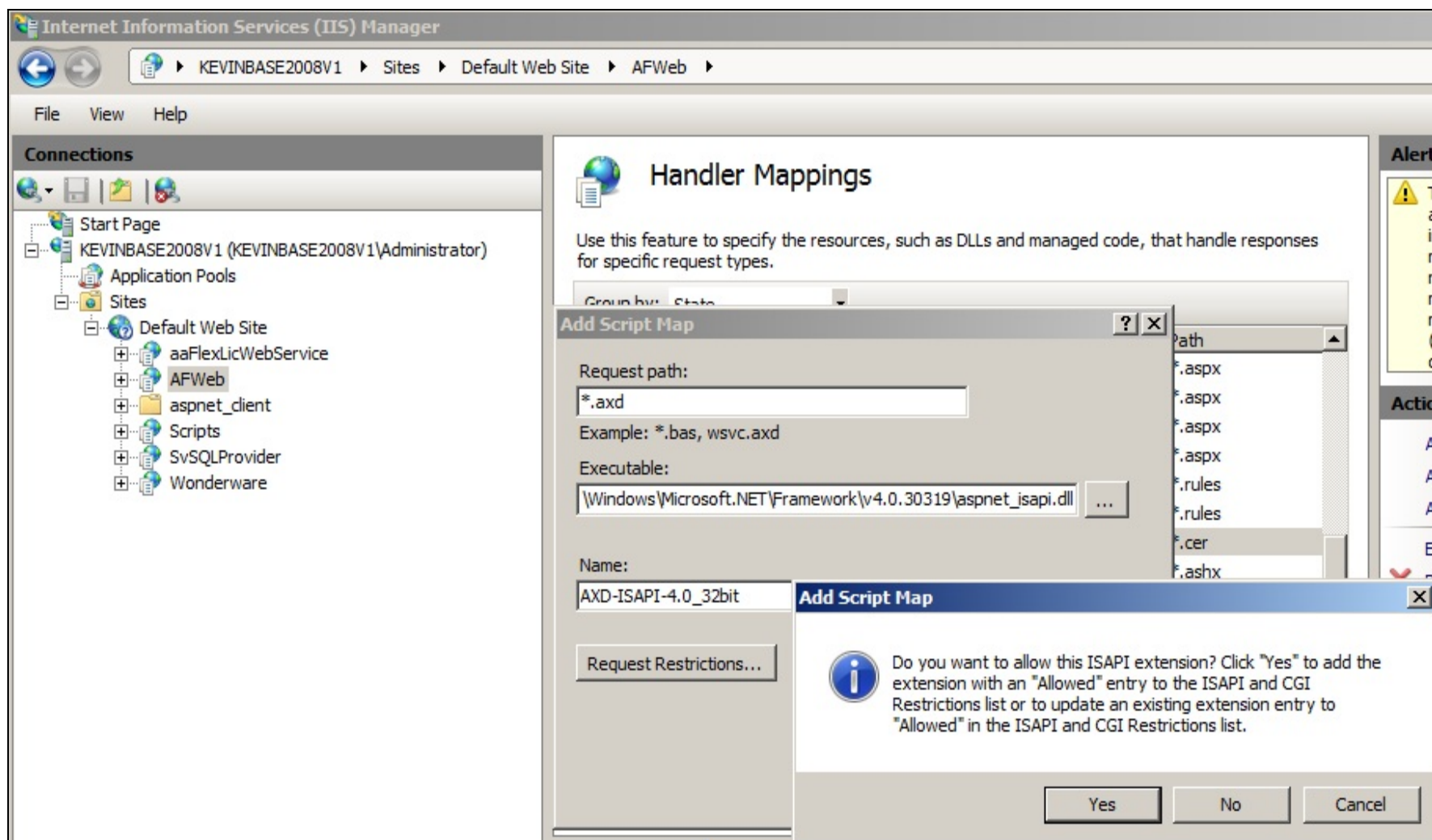


FIGURE 16: ADD AFWEB SCRIPT MAP

10. Repeat steps 1-7 above with the following information for Step 5 (Figure 17 below).

- Requested Path = ***.axd**
- Executable = **C:\\Windows\\Microsoft.NET\\Framework64\\v4.0.30319\\aspnet_isapi.dll**
- Name = **AXD-ISAPI-4.0_64bit**

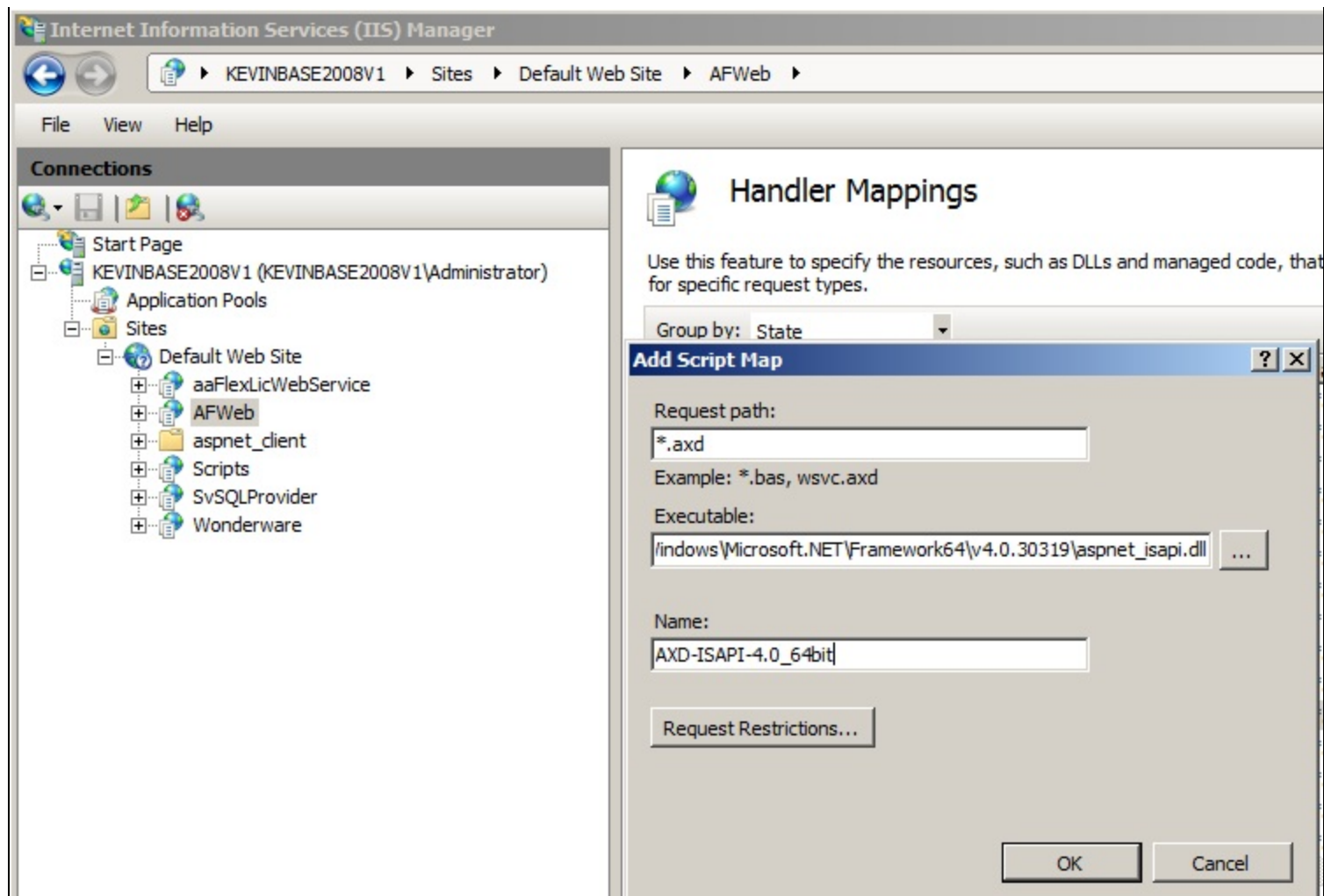


FIGURE 17: ADD AFWEB AXD SCRIPT MAP

References

Click the following links to view other Handler Mapping Tech Notes:

- [Tech Note 985 Adding IIS Handler Mappings: AFWeb and Related Reports](#)
- [Tech Note 986 Adding IIS Handler Mappings: ArchestraA Reports](#)

K. Nourbakhsh, E. Xu

Tech Notes are published occasionally by Wonderware Technical Support. Publisher: Invensys Systems, Inc., 26561 Rancho Parkway South, Lake Forest, CA 92630. There is also technical information on our software products at [Wonderware Technical Support](#).

For technical support questions, send an e-mail to wwsupport@invensys.com.

 [Back to top](#)

©2013 Invensys Systems, Inc. All rights reserved. No part of the material protected by this copyright may be reproduced or utilized in any form or by any means, electronic or mechanical, including photocopying, recording, broadcasting, or by any information storage and retrieval system, without permission in writing from Invensys Systems, Inc.

[Terms of Use.](#)