

## [Tech Note 985](#)

# Adding IIS Handler Mappings: AFWeb and Related Reports

---

All Tech Notes, Tech Alerts and KBCD documents and software are provided "as is" without warranty of any kind. See the [Terms of Use](#) for more information.

Topic#: 002812

Created: October 2013

## Introduction

This *Tech Note* is part of a series of Diagnostic Tech Notes focused on IIS Handler Mapping issues. See the [References section](#) at the end of this *Tech Note* for links.

## Application Versions

- Wonderware Information Server 2012 R2 (5.x)
- Windows 2008 R2 Server
- Windows 2008 SP2

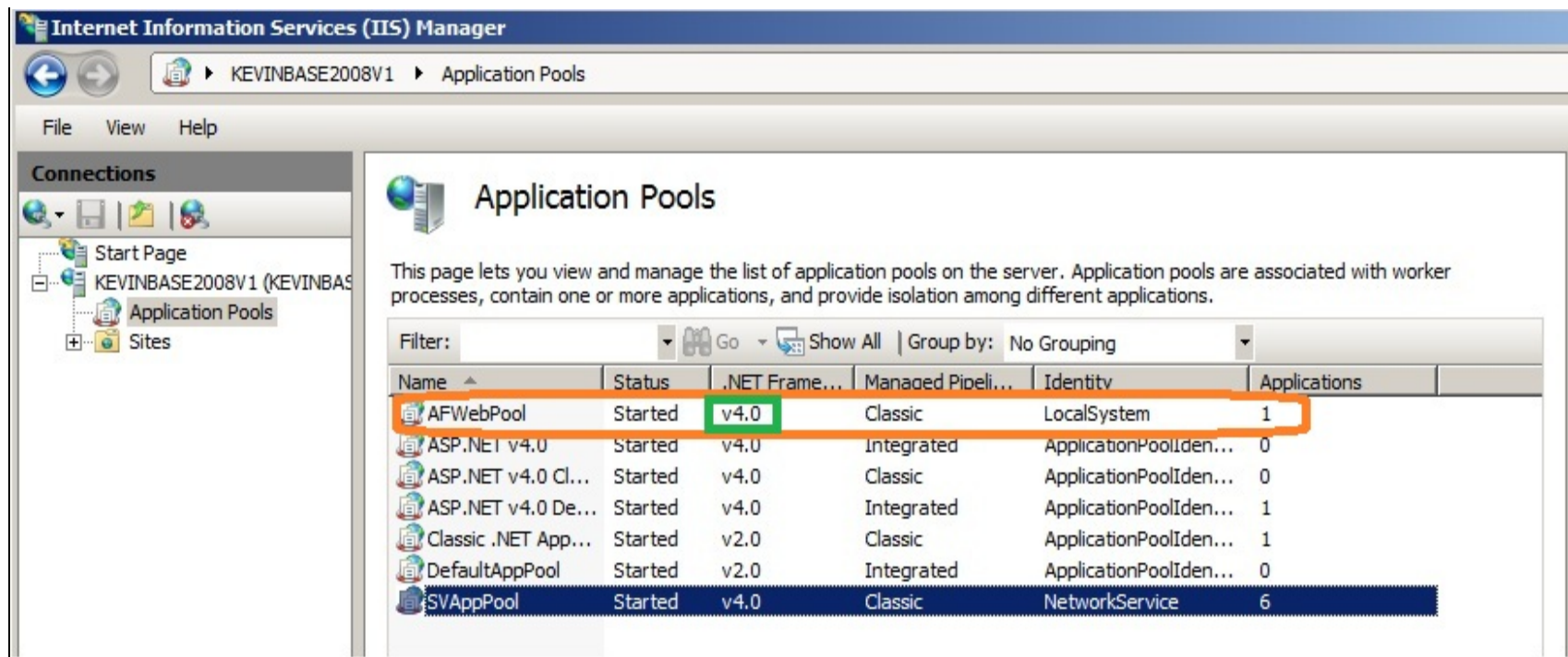
## Problem

Opening the AFWeb and/or AFWeb Reports from the WIS Administration tab fails.

## Cause

Wonderware Support has discovered a problem with some machines using IIS 7.x: There are some missing Handler Mappings to .NET Framework 4.0.

**Note:** This issue happens only on WIS 5.0 (System Platform 2012 R2). In WIS 5.0, the **AFWebPool** uses the .NET Framework Version 4.0.



The screenshot shows the IIS Manager console for the server KEVINBASE2008V1. The 'Application Pools' section is selected in the left-hand tree. The main pane displays a list of application pools with the following columns: Name, Status, .NET Framework Version, Managed Pipeline Mode, Identity, and Applications. The 'AFWebPool' row is highlighted with an orange border, and its '.NET Framework Version' is 'v4.0', which is also highlighted with a green box.

Name	Status	.NET Framework Version	Managed Pipeline Mode	Identity	Applications
AFWebPool	Started	v4.0	Classic	LocalSystem	1
ASP.NET v4.0	Started	v4.0	Integrated	ApplicationPoolIden...	0
ASP.NET v4.0 Cl...	Started	v4.0	Classic	ApplicationPoolIden...	0
ASP.NET v4.0 De...	Started	v4.0	Integrated	ApplicationPoolIden...	1
Classic .NET App...	Started	v2.0	Classic	ApplicationPoolIden...	1
DefaultAppPool	Started	v2.0	Integrated	ApplicationPoolIden...	0
SVAppPool	Started	v4.0	Classic	NetworkService	6

FIGURE 1: SV APPLICATION POOL USING .NET VERSION 4.0

Browsing Trend from the **ActiveFactory/Reports** section of portal fails (Figure 2 below).

The screenshot displays the Wonderware Information Server interface. On the left is a navigation menu with categories like Administration, Process Graphics, Factory Alarms, Custom Links, Table Weaver, ArchestrA Graphics, ActiveFactory, Reports, Alarms, Historian, and Overview. The 'Trend' application is selected. The main content area shows a 'Server Error in Application "DEFAULT WEB SITE/AFWEB"' with the following details:

**Error Summary**  
**HTTP Error 404.17 - Not Found**  
 The requested content appears to be script and will not be served by the static file handler.

**Detailed Error Information**

Module	StaticFileModule	Requested URL	http://kevinbase2008v1:80/AFWeb/Trend.aspx?SV=true
Notification	ExecuteRequestHandler	Physical Path	C:\inetpub\wwwroot\afweb\Trend.aspx
Handler	StaticFile	Logon Method	Anonymous
Error Code	0x80070032	Logon User	Anonymous

**Most likely causes:**

- The request matched a wildcard mime map. The request is mapped to the static file handler. If there were different pre-conditions, the request will map to a different handler.

FIGURE 2: HTTP ERROR FOR DATA SOURCE MANAGER

The Problem also occurs when browsing **ActiveFactory/Reports** from the portal (Figure 3 below).

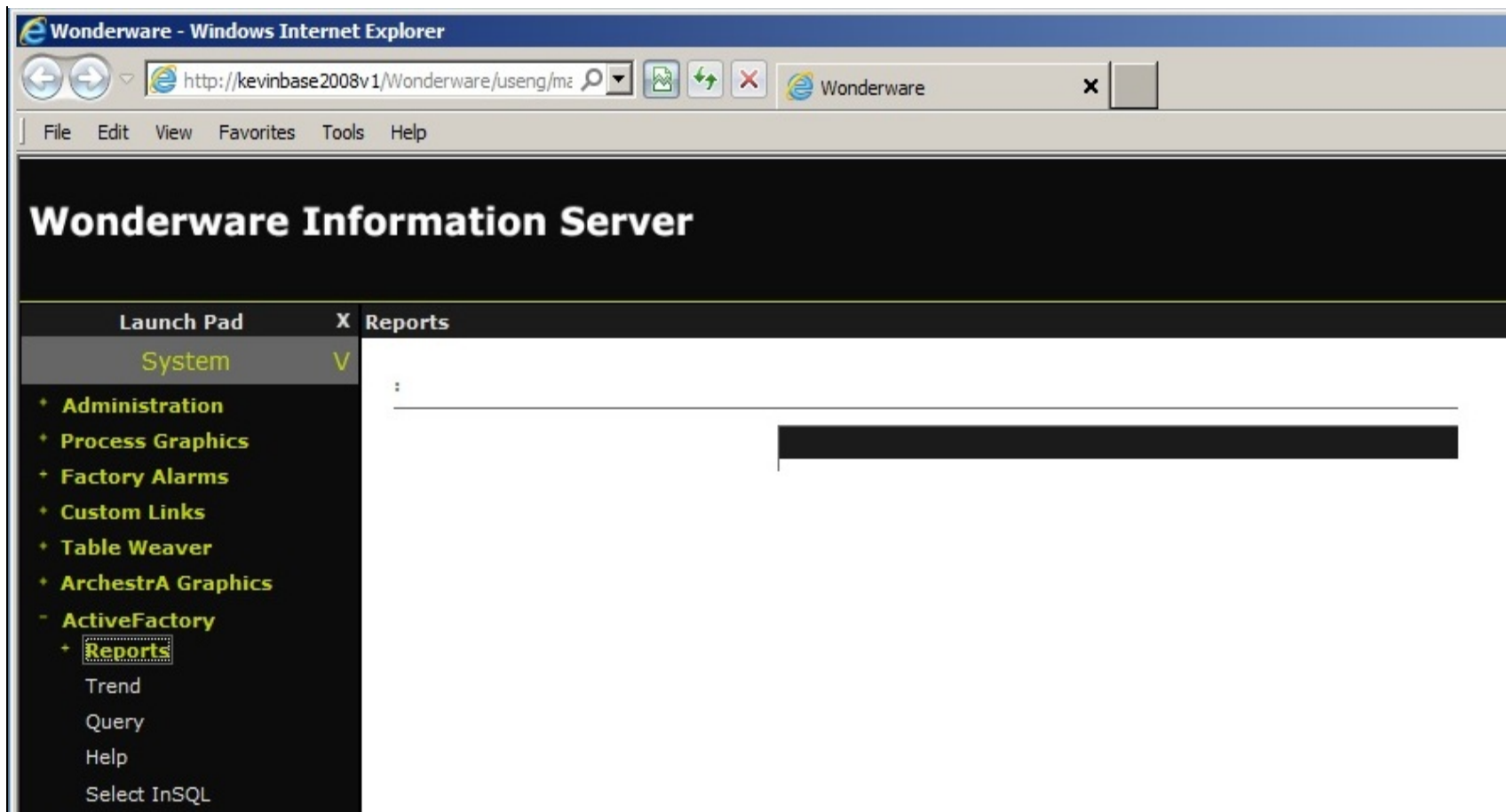


FIGURE 3: HTTP ERROR FOR REPORT MANAGER

Browsing Query from ActiveFactory section of portal (Figure 4 below).

# Wonderware Information Server

Launch Pad X Query

System V

- + Administration
- + Process Graphics
- + Factory Alarms
- + Custom Links
- + Table Weaver
- + ArcestrA Graphics
- ActiveFactory
  - + Reports
    - Trend
    - Query
    - Help
    - Select InSQL
  - Reports
    - Alarms
      - Alarms History Report
    - Historian
      - Group Period
      - Historian Model
  - OverView

## Server Error in Application "DEFAULT WEB SITE/AFWEB"

**Error Summary**

**HTTP Error 404.17 - Not Found**

The requested content appears to be script and will not be served by the static file handler.

**Detailed Error Information**

Module	StaticFileModule	Requested URL	http://kevinbase2008v1:80/AFWeb/Query.aspx?SV=true
Notification	ExecuteRequestHandler	Physical Path	C:\inetpub\wwwroot\afweb\Query.aspx
Handler	StaticFile	Logon Method	Negotiate
Error Code	0x80070032	Logon User	KEVINBASE2008V1\administrator

**Most likely causes:**

- The request matched a wildcard mime map. The request is mapped to the static file handler. If there were different pre-conditions, the request will map to a different handler.

**Things you can try:**

- If you want to serve this content as a static file, add an explicit MIME map.

**FIGURE 4: ACTIVEFACTORY QUERY REPORT FAILS**

Browsing **ActiveFactory/Reports/Select INSQ**L section fails (Figure 5 below).

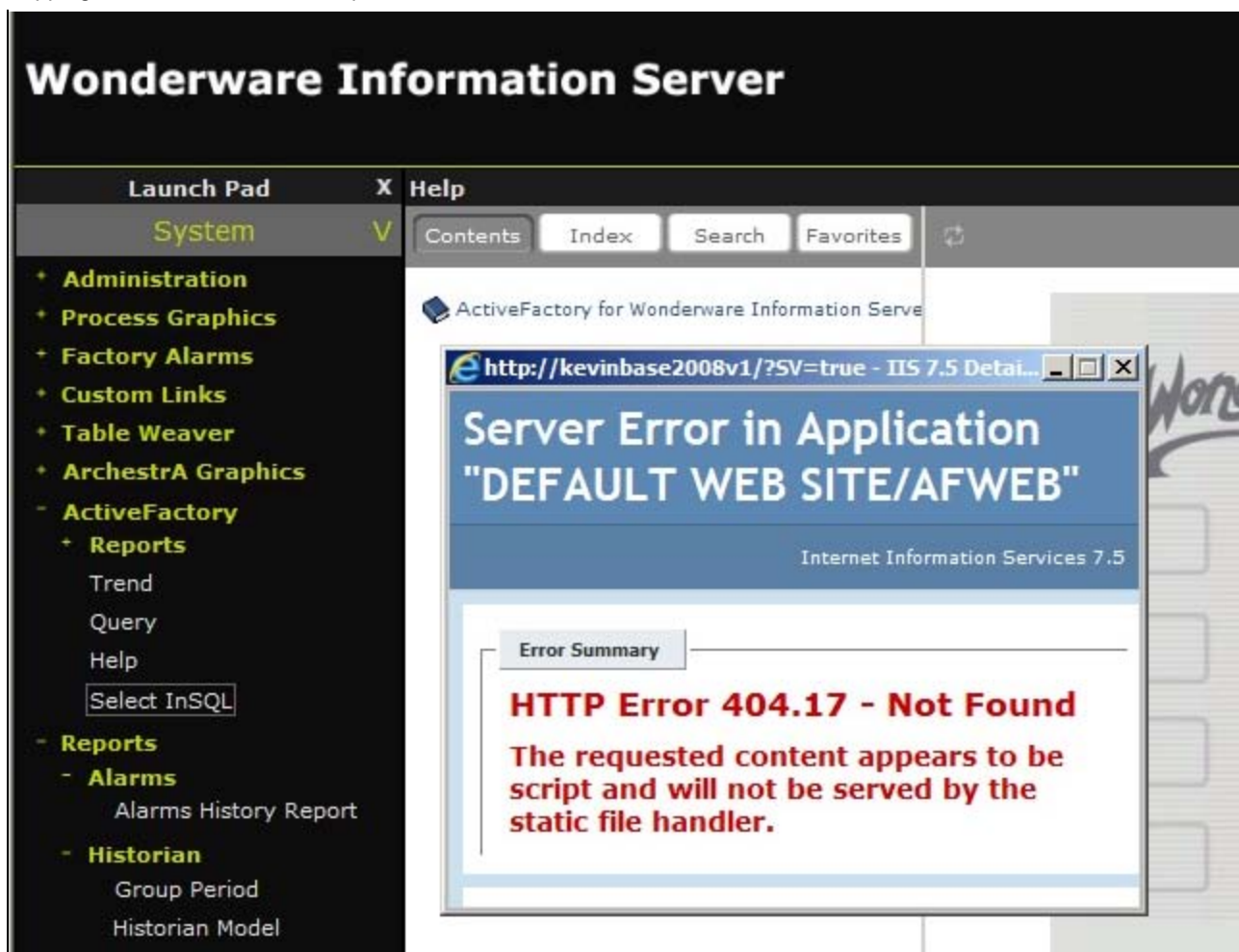


FIGURE 5: SELECT INSQL REPORT FAILS

Browsing Selected INSQL Content unit in the **Table Weaver** section fails (Figure 6 below).



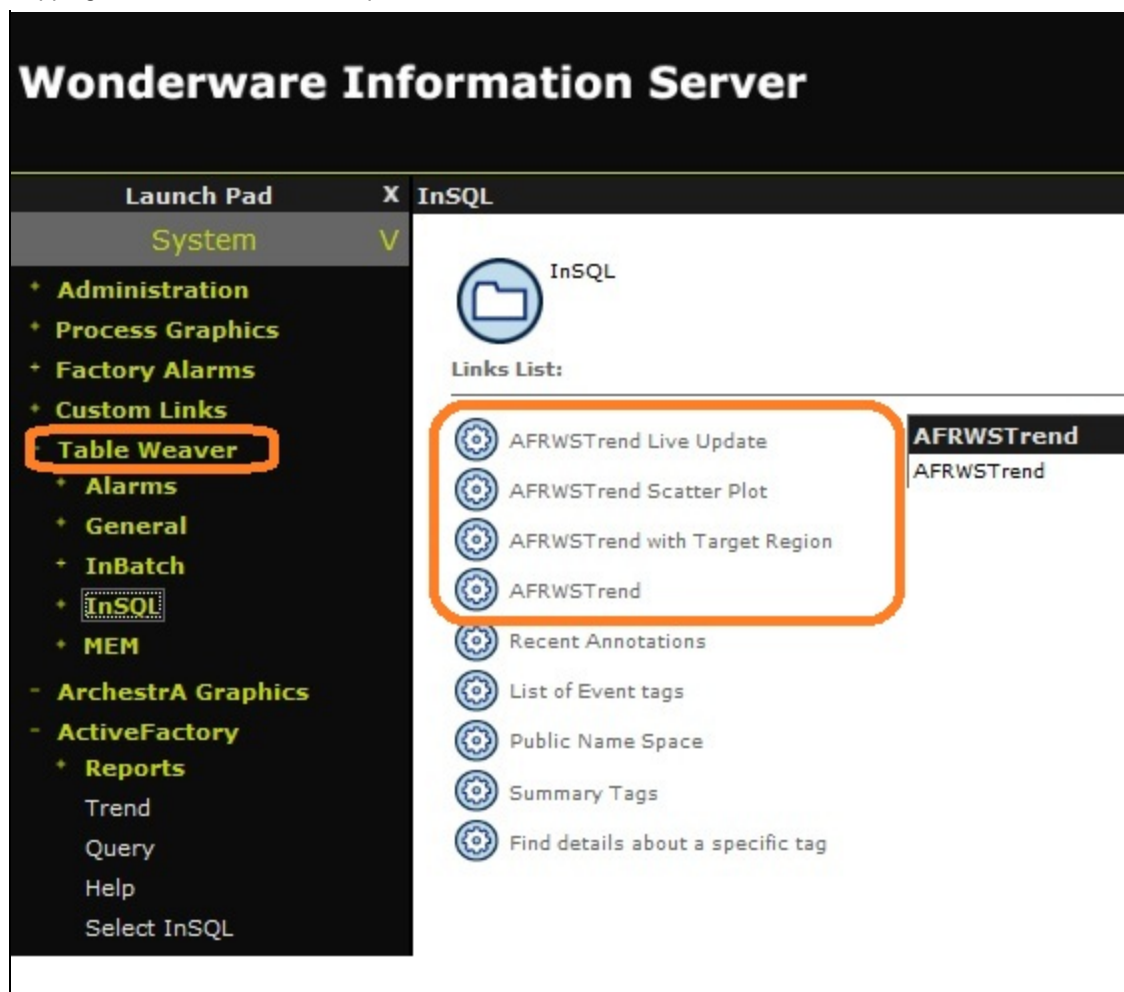


FIGURE 6: BROWSING TABLE WEAVER FAILS

## Solution

1. On the WIS Server, click **Start/Run** and type **Inetmgr**.
2. Highlight the **AFWeb** virtual directory
3. Double-click **Handler Mappings** in the right pane.
4. Right-click any blank area and click **Add Script Map** (Figure 7 below).

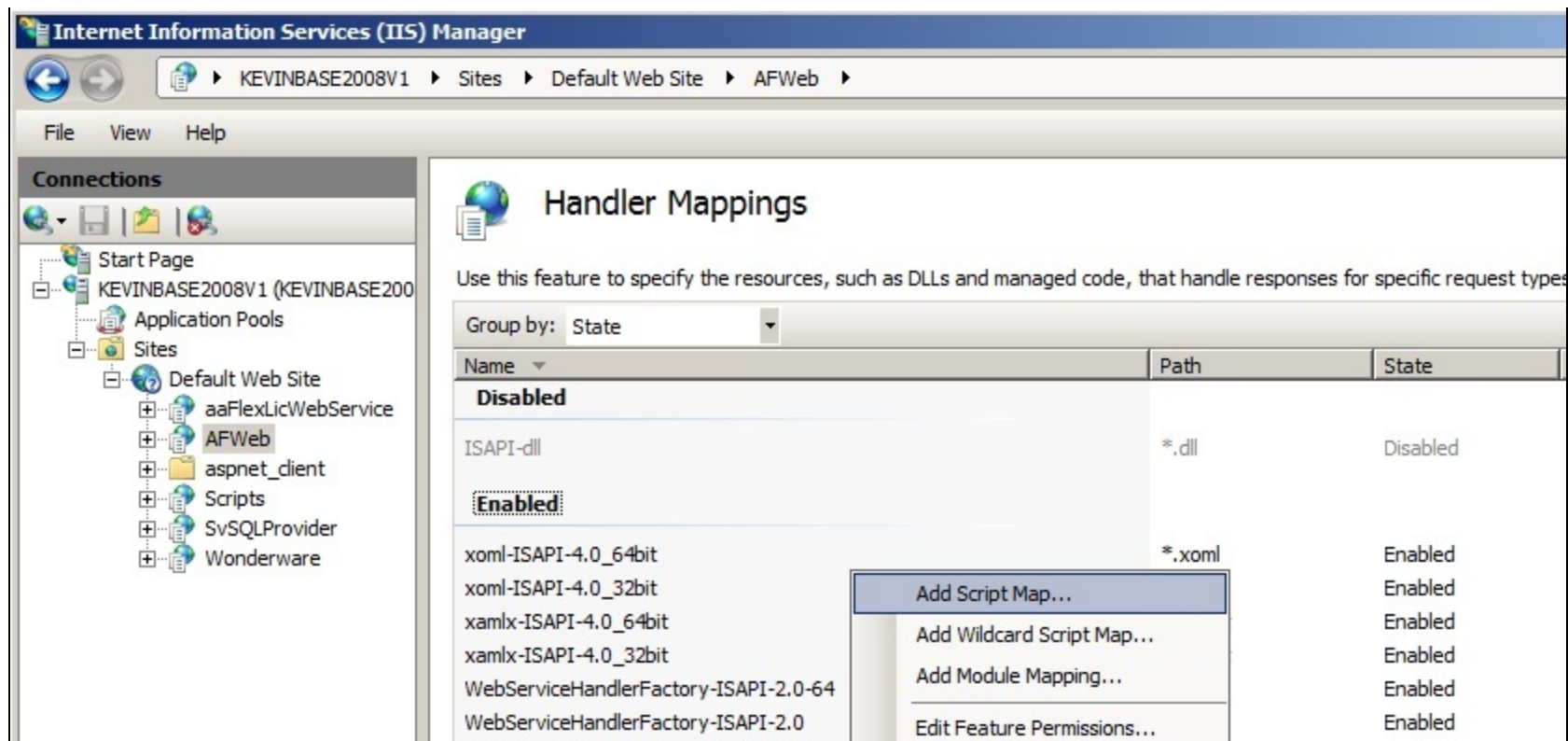


FIGURE 7: ADD SCRIPT MAP

5. Type the following information (Figure 8 below):

- Request Path = **\*.aspx**
- Executable = **%windir%\Microsoft.NET\Framework\v4.0.30319\aspnet\_isapi.dll**
- Name = **PageHandlerFactory-ISAPI-4.0\_32bit**

6. Click **OK**.



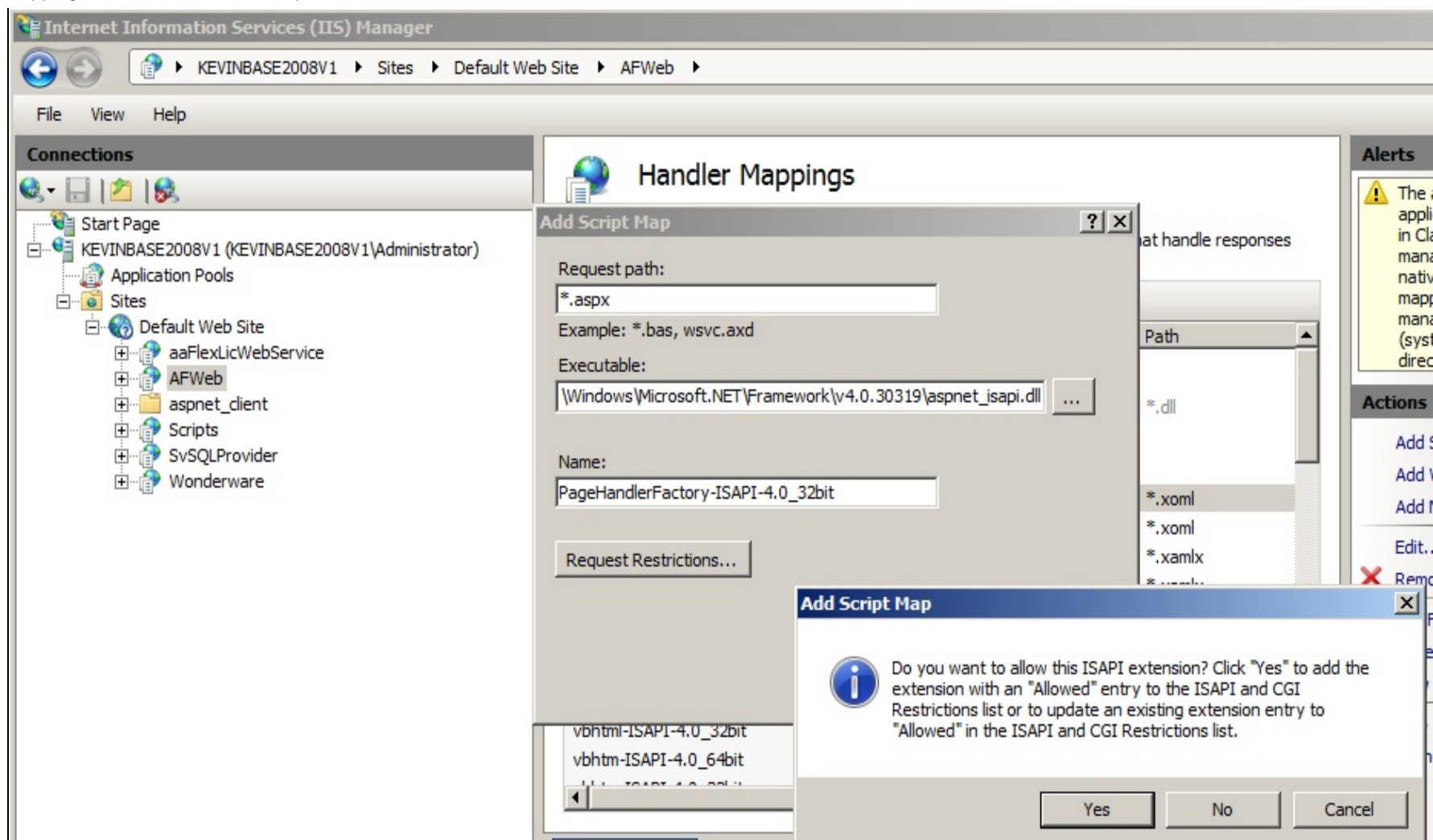
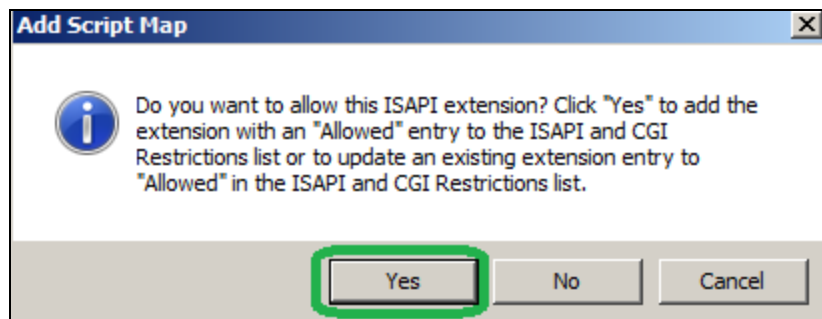


FIGURE 8: ADD PAGEHANDLERFACTORY MAPPING

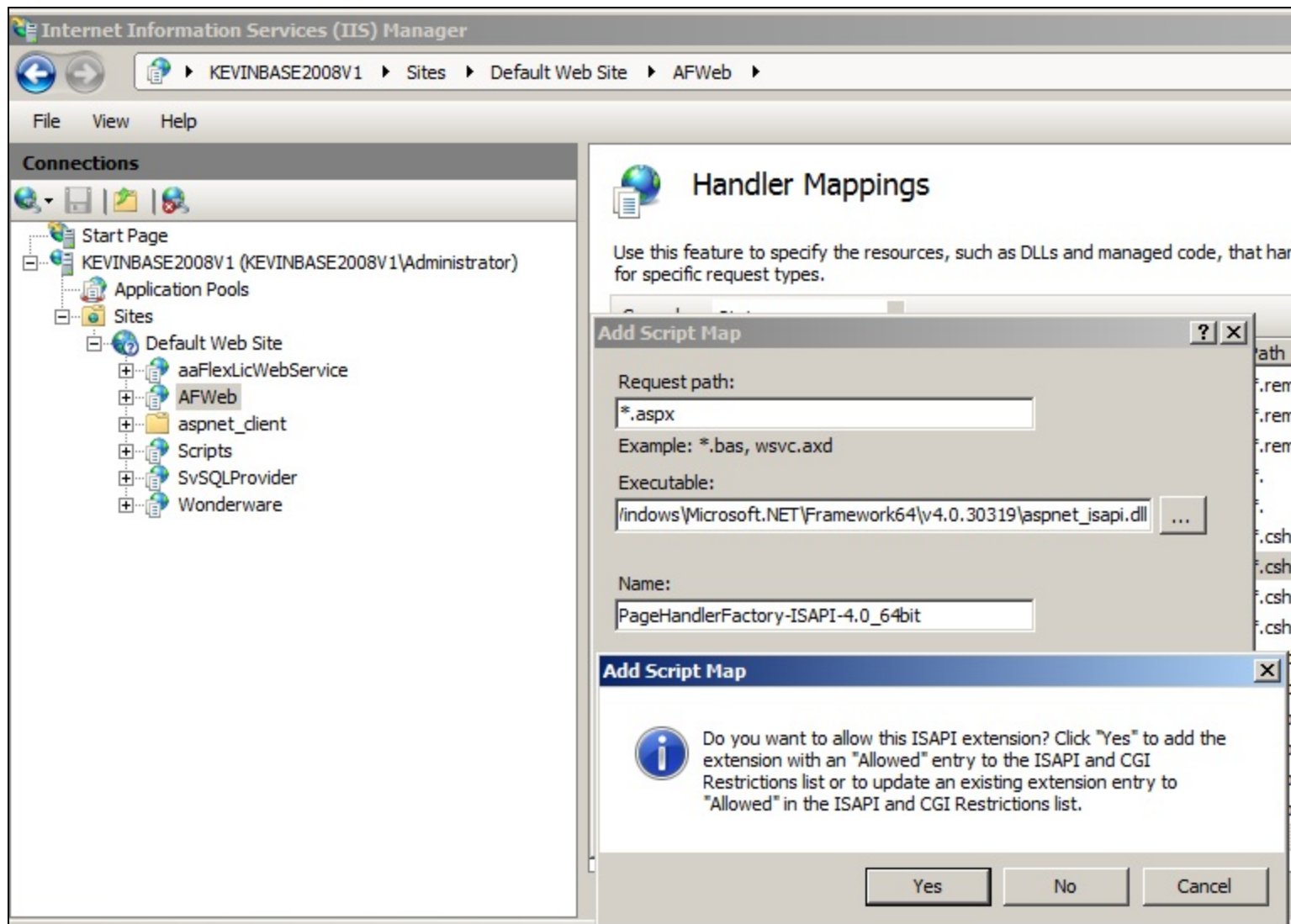
7. Click **Yes**.



**FIGURE 9: ADD THE ISAPI EXTENSION**

8. Repeat steps 1-7 above with the following information for Step 5 (Figure 10 below).

- Requested Path = **\*.aspx**
- Executable = **%windir%\Microsoft.NET\Framework64\v4.0.30319\aspnet\_isapi.dll**
- Name = **PageHandlerFactory-ISAPI-4.0\_64bit**

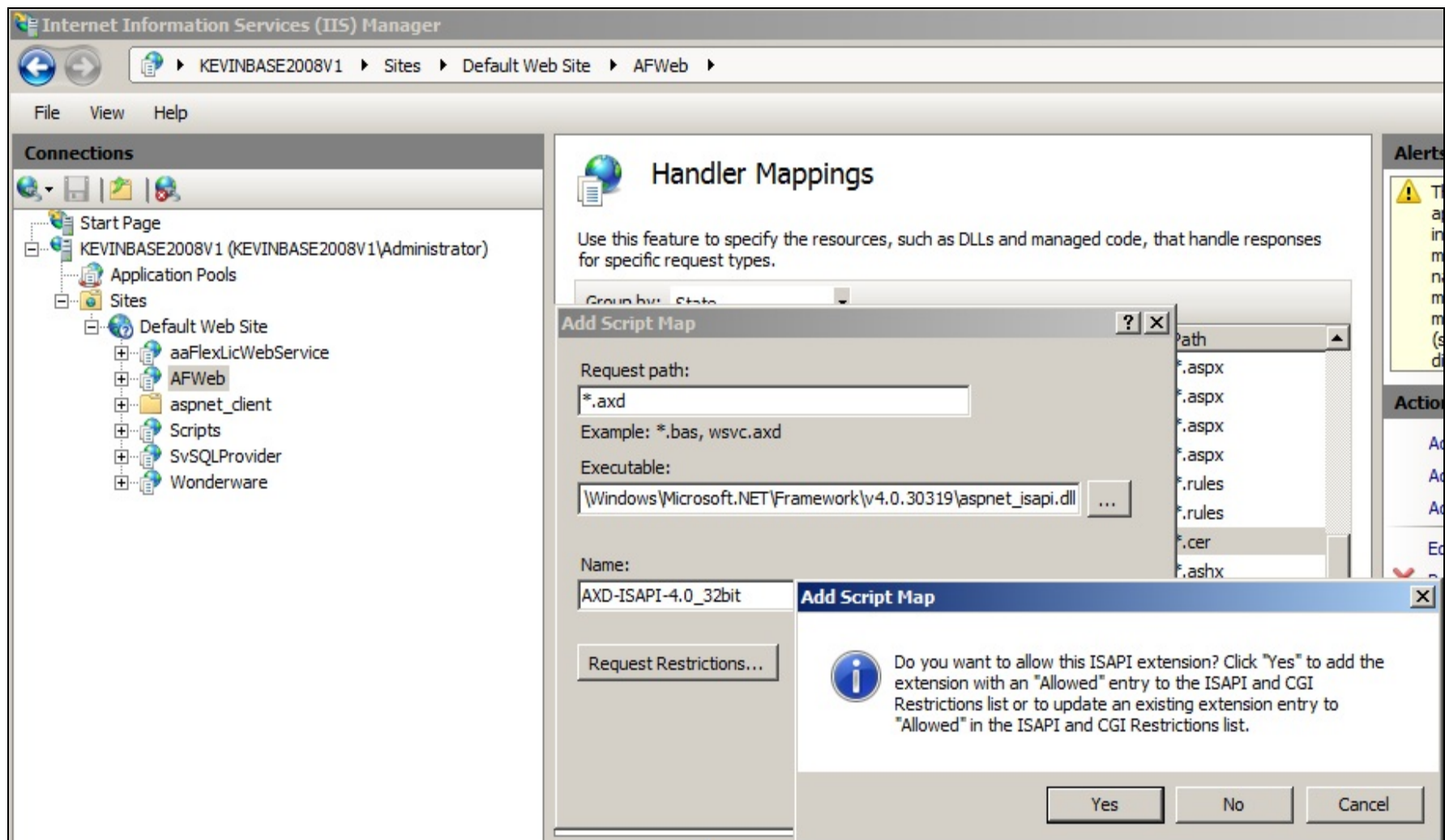


**FIGURE 10: PAGEHANDLERFACTORY MAPPING**

9. Repeat steps 1-7 above with the following information for Step 5 (Figure 11 below).

- Requested Path = **\*.axd**
- Executable = **c:\Windows\Microsoft.NET\Framework\v4.0.30319\aspnet\_isapi.dll**

- Name = **AXD-ISAPI -4.0\_32bit**



**FIGURE 11: AXD-ISAPI MAPPING**

10. Repeat steps 1-7 above with the following Information for Step 5 (Figure 12 below).

- Requested Path = **\*.axd**
- Executable = **C:\Windows\Microsoft.NET\Framework64\v4.0.30319\aspnet\_isapi.dll**
- Name = **AXD-ISAPI -4.0\_64bit**

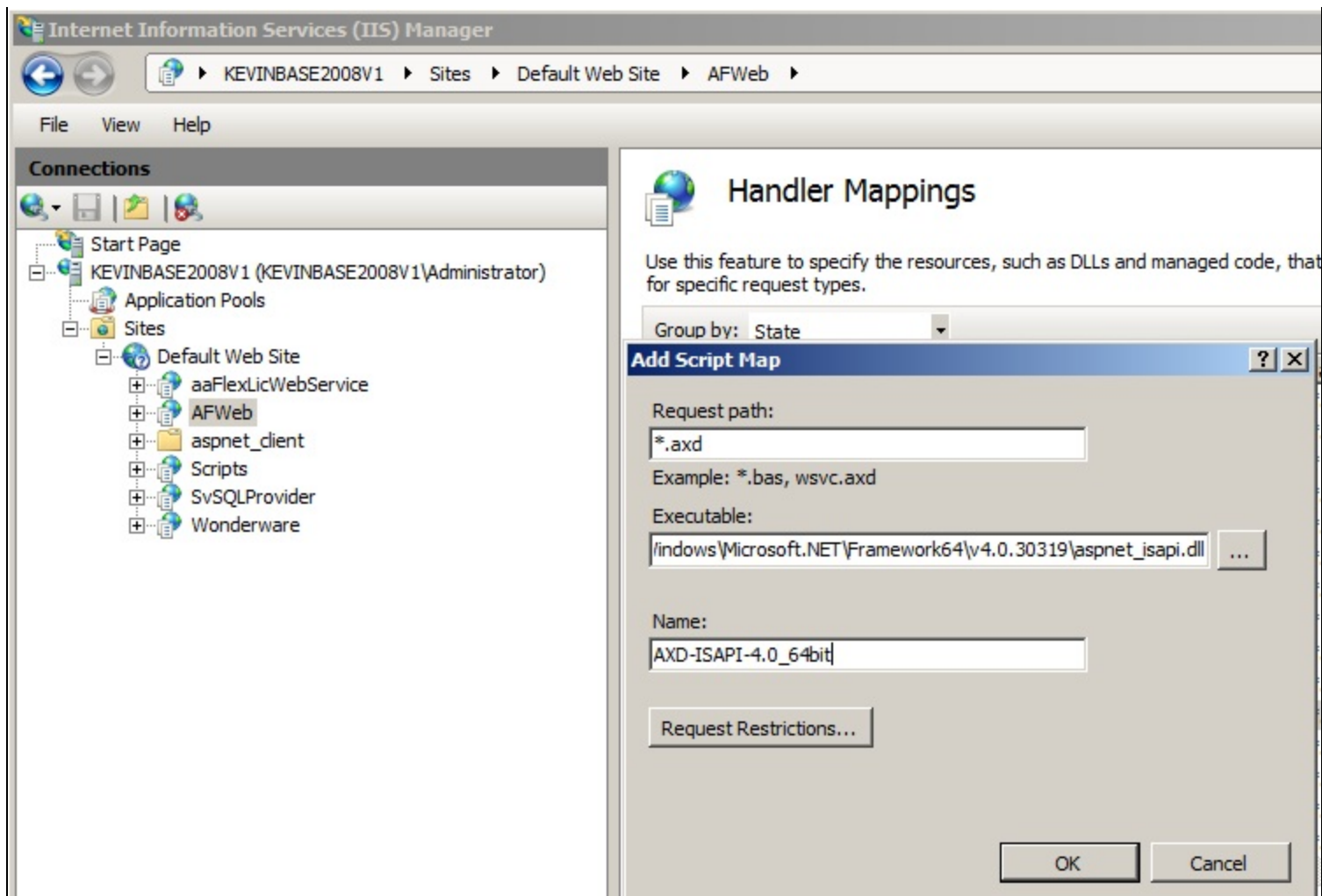


FIGURE 12: AXD-ISAPI MAPPING

11. Clicking **ActiveFactory/Reports** should now appear correctly (Figure 13 below):

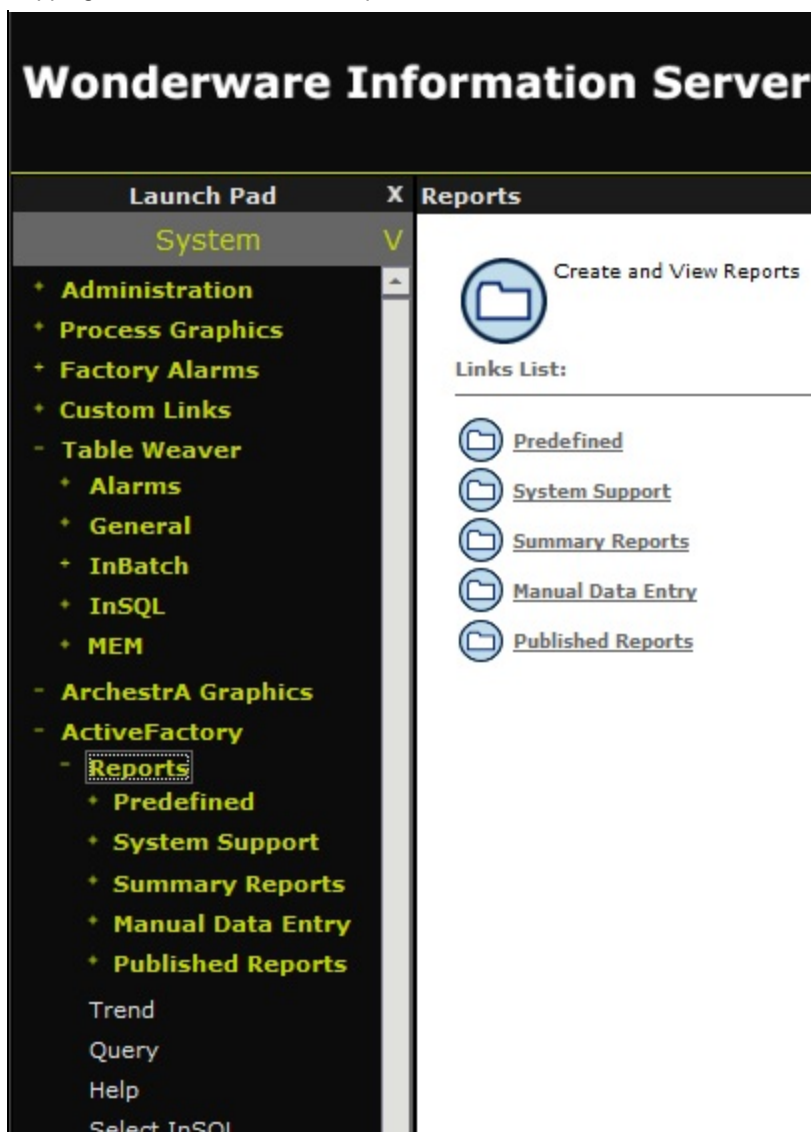


FIGURE 13: ACTIVEFACTORY/REPORTS

12. Clicking **ActiveFactory/Reports/Trend** should now appear correctly (Figure 14 below):



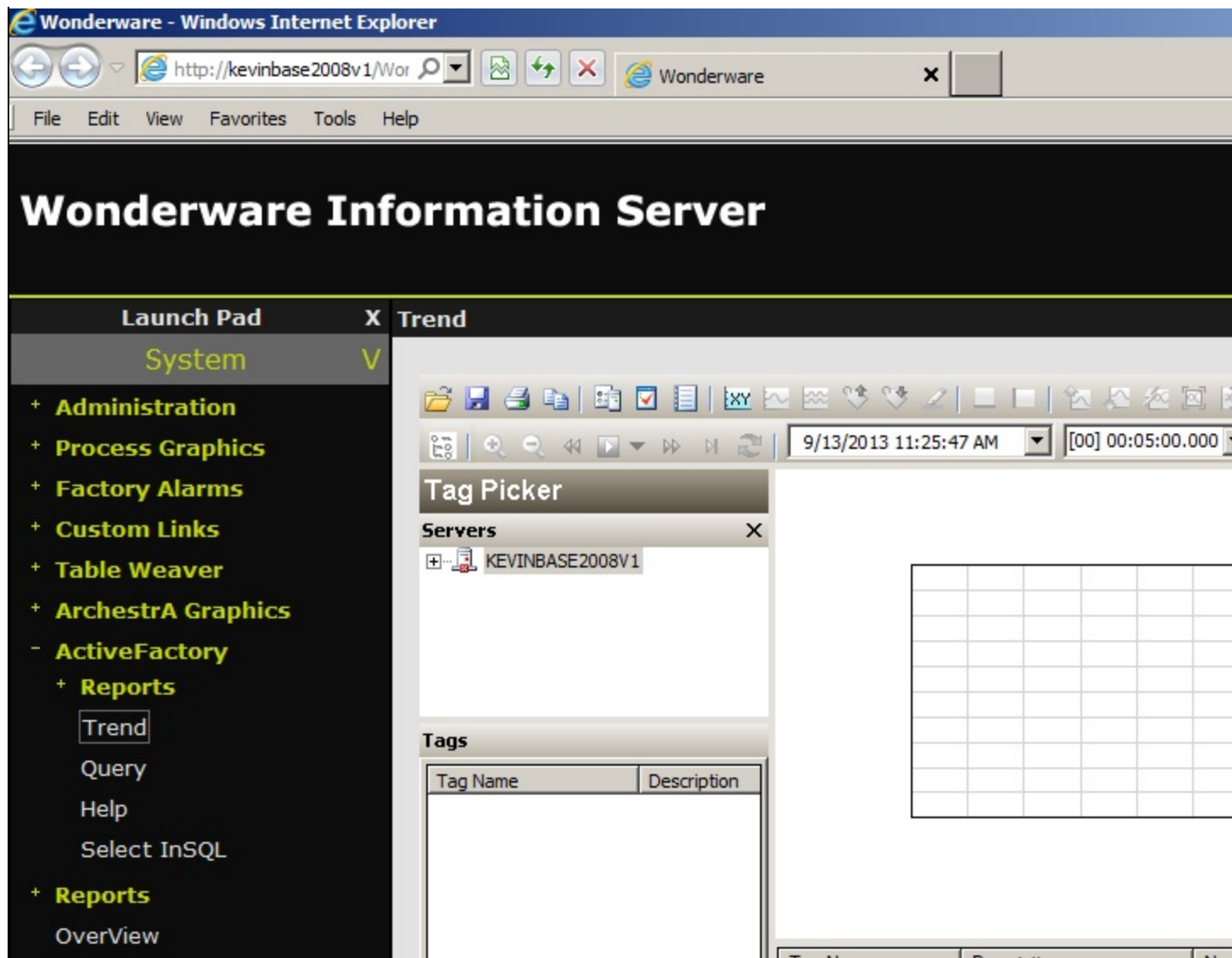


FIGURE 14: ACTIVEFACTORY/REPORTS

13. Clicking **ActiveFactory/Reports/Select InSQL** should now appear correctly (Figure 15 below):



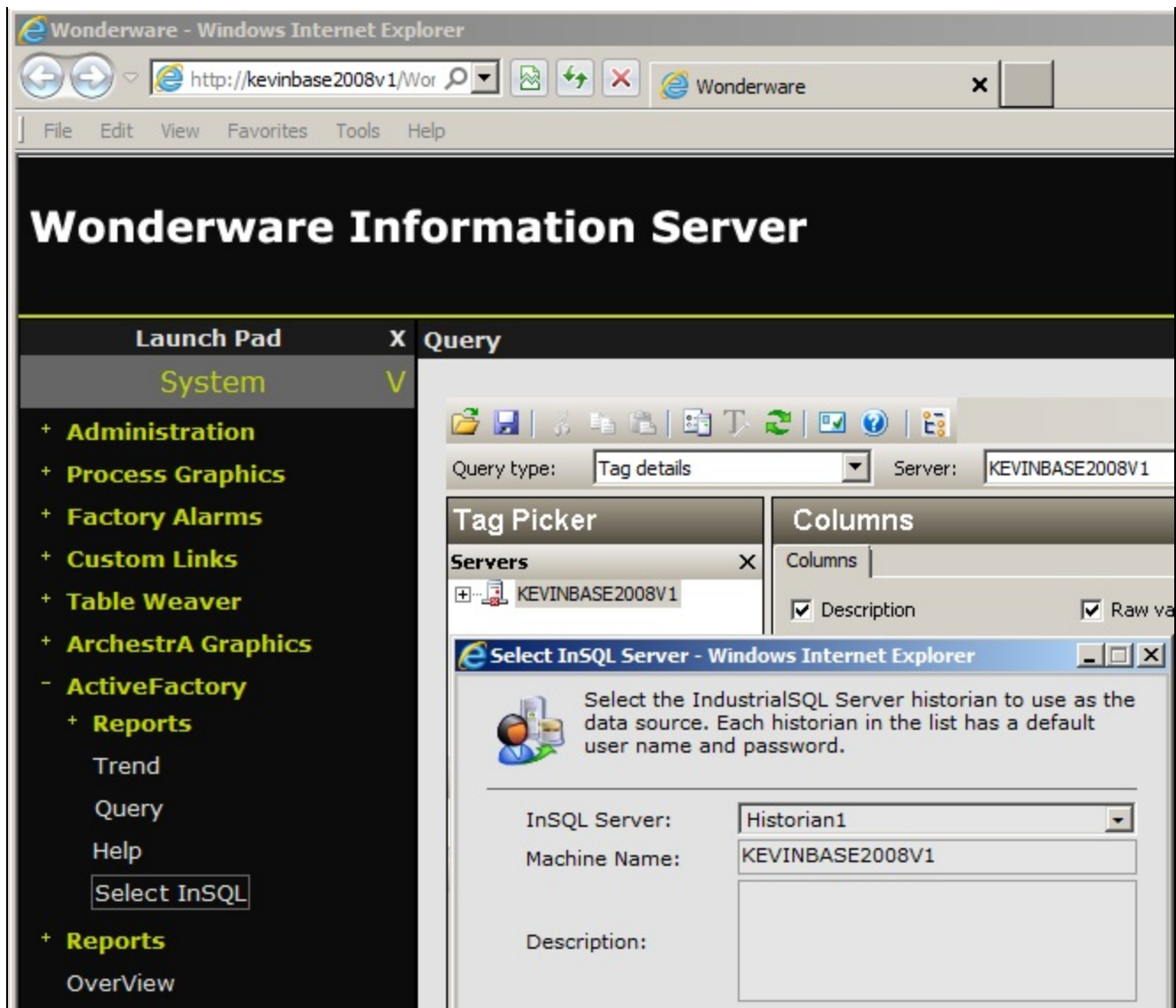


FIGURE 15: ACTIVEFACTORY/REPORTS/SELECT InSQL

- Clicking **Table Weaver/InSQL/AFRWSTrend** reports should now appear correctly (Figure 16 below):

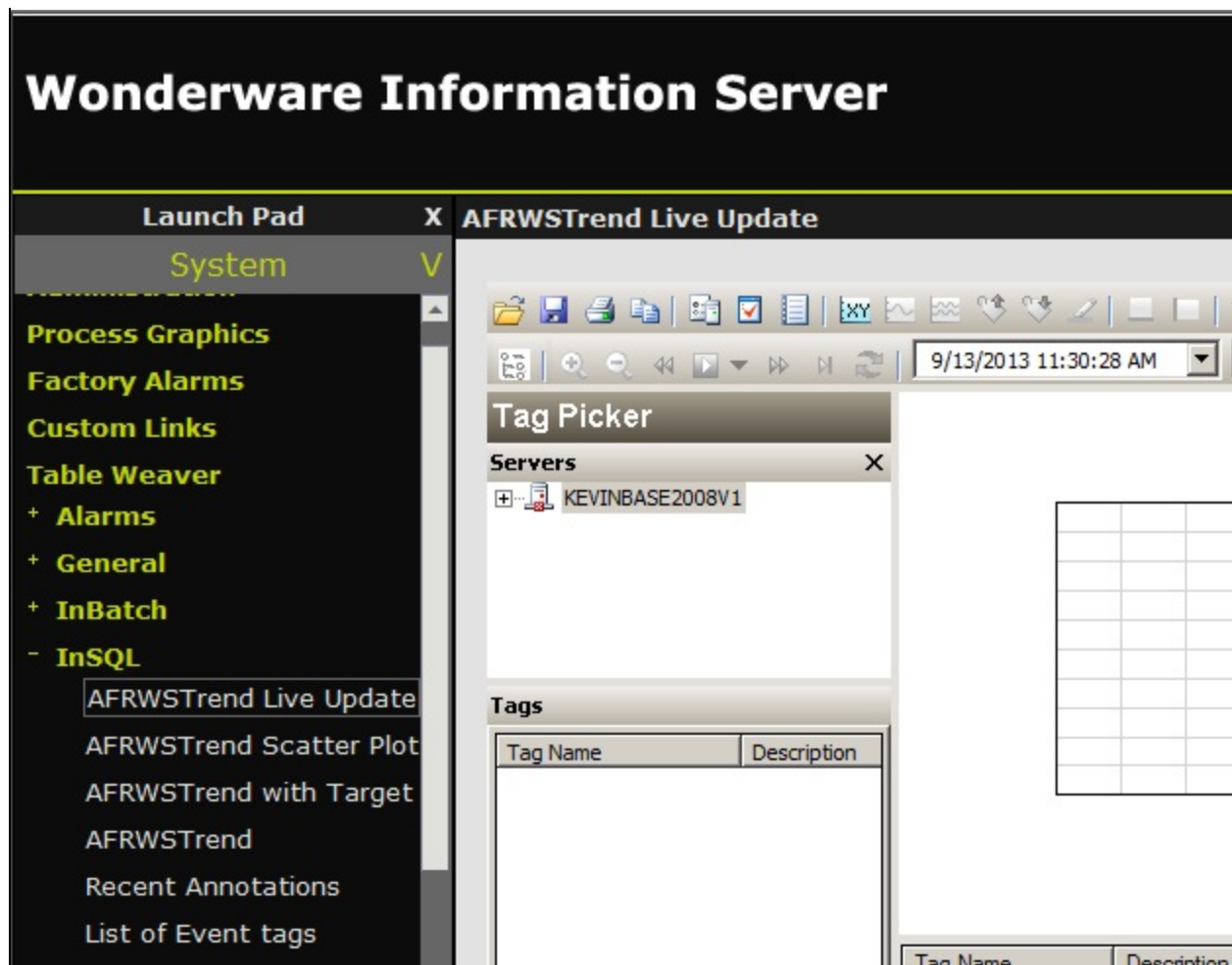


FIGURE 16: TREND REPORTS

## References

Click the following links to view other Handler Mapping Tech Notes:

- [Tech Note 984 Adding IIS Handler Mappings: Checklist](#)
- [Tech Note 986 Adding IIS Handler Mappings: Archestra Reports](#)

K. Nourbakhsh, E. Xu

*Tech Notes* are published occasionally by Wonderware Technical Support. Publisher: Invensys Systems, Inc., 26561 Rancho Parkway South, Lake Forest, CA 92630. There is also technical information on our software products at [Wonderware Technical Support](#).

For technical support questions, send an e-mail to [wwsupport@invensys.com](mailto:wwsupport@invensys.com).

 [Back to top](#)

©2013 Invensys Systems, Inc. All rights reserved. No part of the material protected by this copyright may be reproduced or utilized in any form or by any means, electronic or mechanical, including photocopying, recording, broadcasting, or by any information storage and retrieval system, without permission in writing from Invensys Systems, Inc.

[Terms of Use.](#)