

[Tech Note 987](#)

Configuring AppServer to Store Data in Primary and Partner Historians

All Tech Notes, Tech Alerts and KBCD documents and software are provided "as is" without warranty of any kind. See the [Terms of Use](#) for more information.

Topic#: 002814

Created: October 2013

Introduction

Wonderware System Platform 2012R2 allows users to configure Application Server to push data values to a "primary" Historian and a "partner" Historian. The partner Historian can be used as a hot backup if the primary Historian is not available.

After the Application Server is configured to store data to the Historian Server, the corresponding AppEngine will send data to both the primary Historian and the partner. If for some reason, the primary Historian becomes unavailable, the AppEngine will go into store-and-forward mode for the unavailable Historian and store the data until the Historian comes back online. After the connection is restored, the AppEngine forwards the data to this Historian.

This *Tech Note* provides step-by-step procedures to configure Application Server and Historian Server in order to store data to a primary Historian and to a Partner Historian.

Application Versions

- Wonderware Historian Server 2012R2 (version 11.0) or above
- Wonderware Historian Client 2012R2 (version 10.1) or above
- Wonderware Application Server 2012R2 (version 3.6) or above
- Microsoft SQL Server 2008 SP3 or Microsoft SQL Server 2012

Note: This *Tech Note* assumes that you are familiar with Wonderware Historian Server, Historian Client, and Application Server. If you have any questions regarding the Microsoft SQL Server or the Operating System, please contact Microsoft Technical support at www.microsoft.com for further assistance.

Important

It is important to note that the historians in a partner setup are not intended to be a synchronized pair, where both the historian configuration and data are fully and automatically synchronized. It is up to you to make sure that the two historians are symmetrical and synchronized. Here are some recommendations you should follow to keep the pair synchronized, or else forwarded data is not inserted as previously described:

- If you make configuration changes for one Historian, make sure to perform the same changes to the Partner.

- If you perform a .csv import on one Historian, repeat the import on the Partner.

Configuring AppServer for Store & Forward Location and Historization

In the following steps, we will configure AppServer Platform and Engine objects in the Galaxy to specify the Store&Forward folder and the name of the primary Historian:

1. In the Deployment view, open the Platform Editor.
2. On the **General** tab, type a folder location for Store Forward in the **History store forward directory** field. In this example, it is **C:\S&F**.

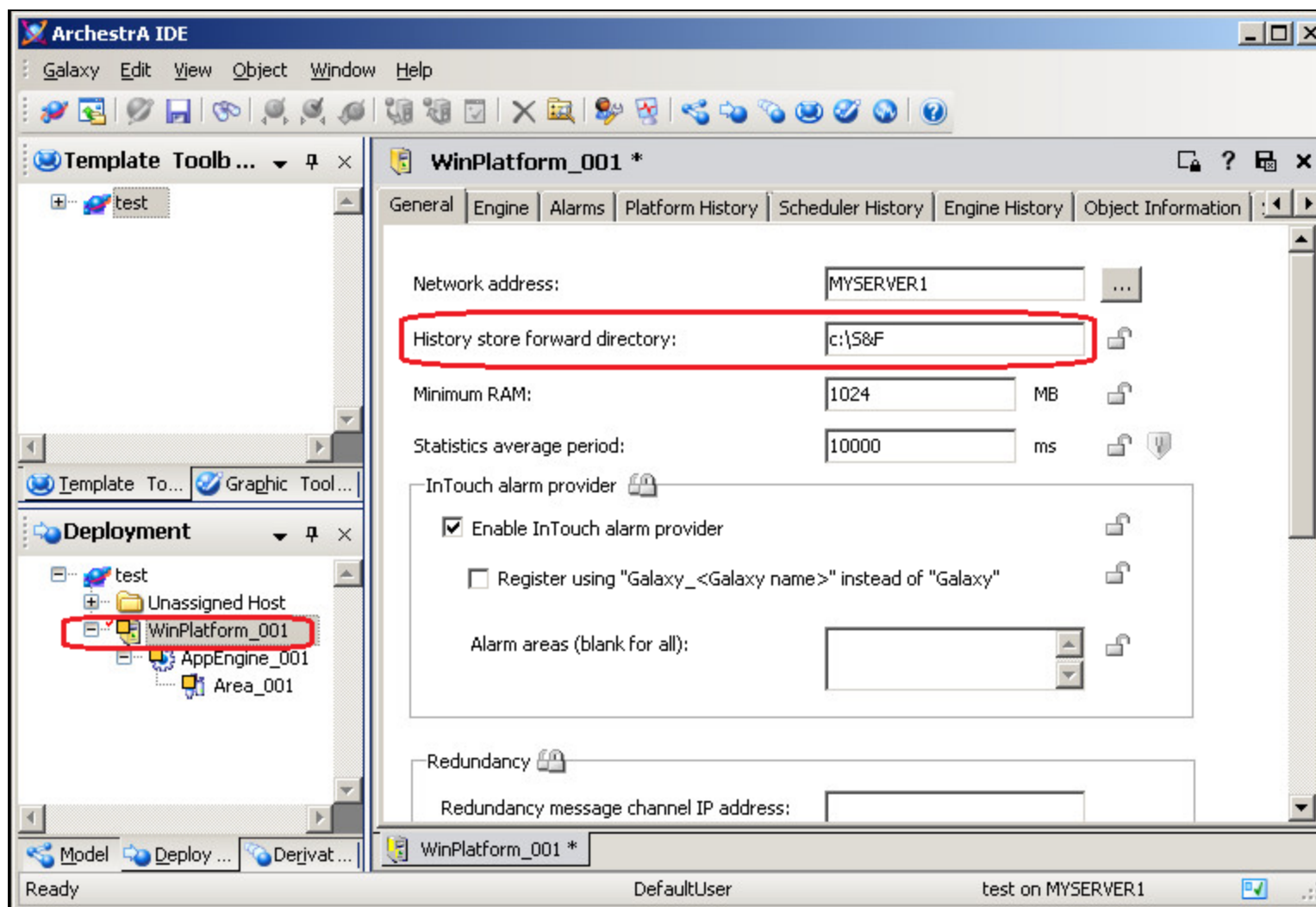


FIGURE 1: STORE AND FORWARD LOCATION

3. Save and close the platform editor and check in the platform object.

4. Open the AppEngine Configuration Editor.
5. On the **General** tab, check the **Enable storage to historian** option.
6. In the **Historian** field, type the Primary Historian node name. In this example, it is **MYSERVER1**.

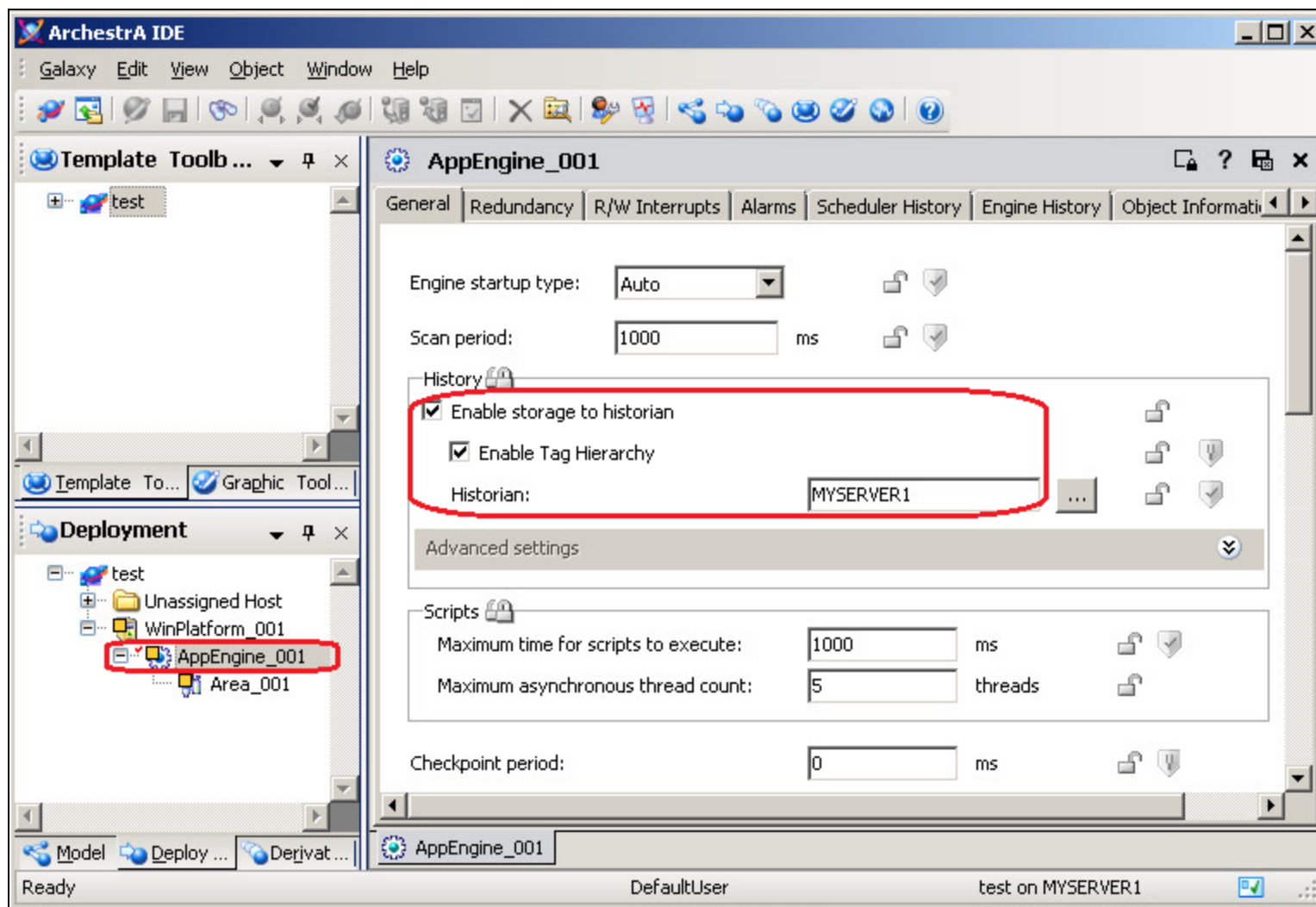


FIGURE 2: ENABLE STORAGE TO HISTORIAN

7. Save and close the Platform Editor and check in the Engine Object.
8. Deploy the Platform and Engine objects.

Specifying a Historian Partner

Configuring AppServer to Store Data in Primary and Partner Historians

1. In the SMC, expand a server group, expand the server, and then expand the Configuration Editor.
2. Expand **System Configuration** and then click **Parameters**. A list of all of the system parameters appears in the details pane.
3. Double-click the Historian Partner system parameter. The System Parameter Properties dialog box appears.
4. Double-click the **Historian Partner** system parameter. The System Parameter Properties dialog box appears.
5. In the **Value** field, type the computer name of the Partner Historian.
6. Click **OK**.

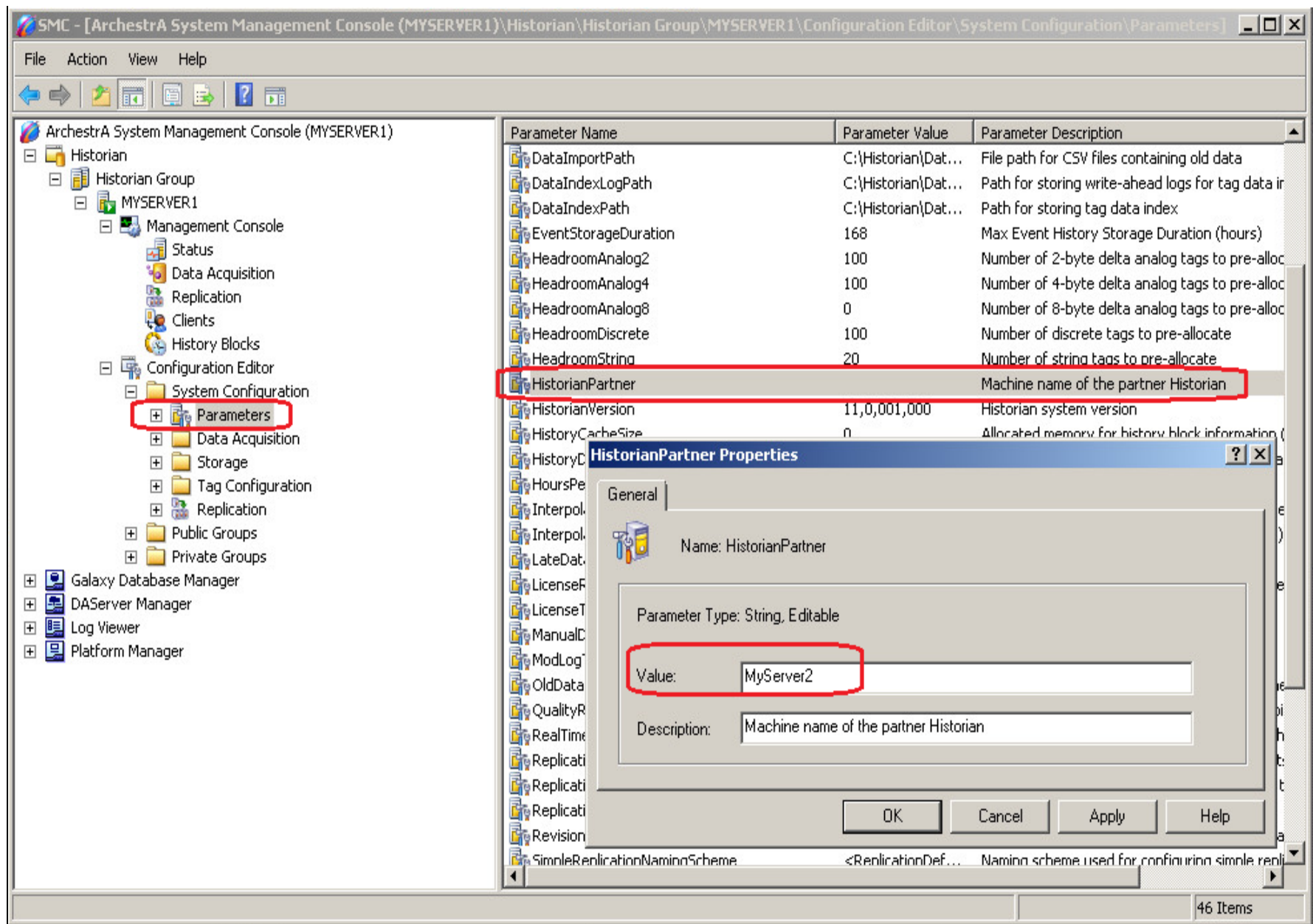


FIGURE 3: CONFIGURE THE HISTORIAN PARTNER

You can use the host name, fully qualified name, or an IP address. Leading backslashes are optional.

In network environments where AppEngine and Historian Client computers on different subnets must access the partner, be careful to use a name or IP address that can be correctly resolved from all of those network locations and not just between the Historian

7. Click **OK**, then **Yes** when the Invensys Historian message appears (Figure 4 below).



FIGURE 4: HISTORIAN CONFIGURATION COMPLETE

B. Nguyen

Tech Notes are published occasionally by Wonderware Technical Support. Publisher: Invensys Systems, Inc., 26561 Rancho Parkway South, Lake Forest, CA 92630. There is also technical information on our software products at [Wonderware Technical Support](#).

For technical support questions, send an e-mail to wwsupport@invensys.com.

 [Back to top](#)

©2013 Invensys Systems, Inc. All rights reserved. No part of the material protected by this copyright may be reproduced or utilized in any form or by any means, electronic or mechanical, including photocopying, recording, broadcasting, or by any information storage and retrieval system, without permission in writing from Invensys Systems, Inc. [Terms of Use](#).