

## [Tech Note 997](#)

# Setting up the InBatch 2012 R2 Batch Events Feature on a 2-Node System

---

All Tech Notes, Tech Alerts and KBCD documents and software are provided "as is" without warranty of any kind. See the [Terms of Use](#) for more information.

Topic#: 002827

Created: December 2013

## Introduction

This *Tech Note* explains setting up the Batch Events feature on a 2-node system. Node one has InBatch all in one installed. Node 2 is the GR node and only has the InBatch Events Feature installed.

## Application Versions

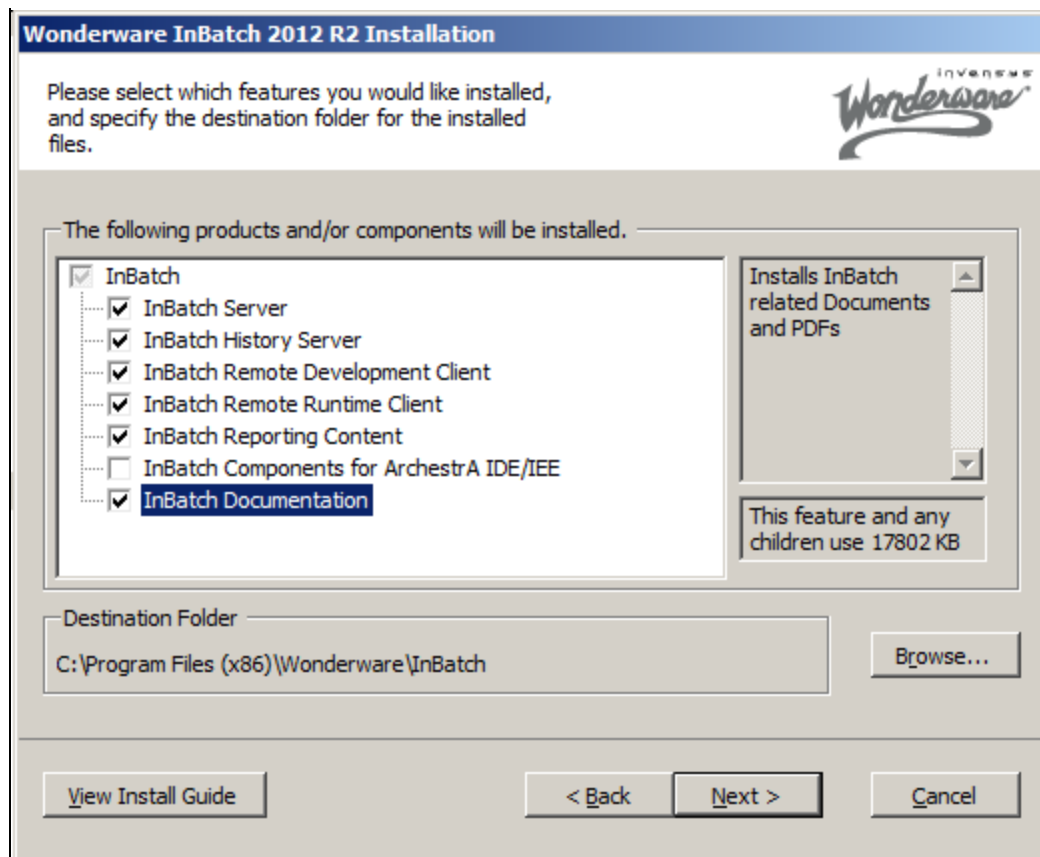
- Microsoft SQL Server 2012
- InBatch 2012 R2

**Important:** ONLY MACHINE NAMES CAN BE USED for this feature. IP addresses are not supported.

## For the Batch Server Node

1. Install SQL Server 2012 on the Batch Server machine.
2. After you have installed SQL Server 2012, install InBatch 2012.
3. Install all of the InBatch features *except for* the **InBatch Components for ArcestrA IDE/IEE**. This is because you have not installed System Platform 2012 R2 on the machine yet.

For this example, skip installing the Reporting Content. In most cases the InBatch reporting is done on a reporting node and not the Batch Server.



**FIGURE 1: Do NOT ENABLE InBatch Components for ArchestrA IDE/IEE**

4. After the installation completes you need to configure InBatch 2012 R2 using the **Configurator**.

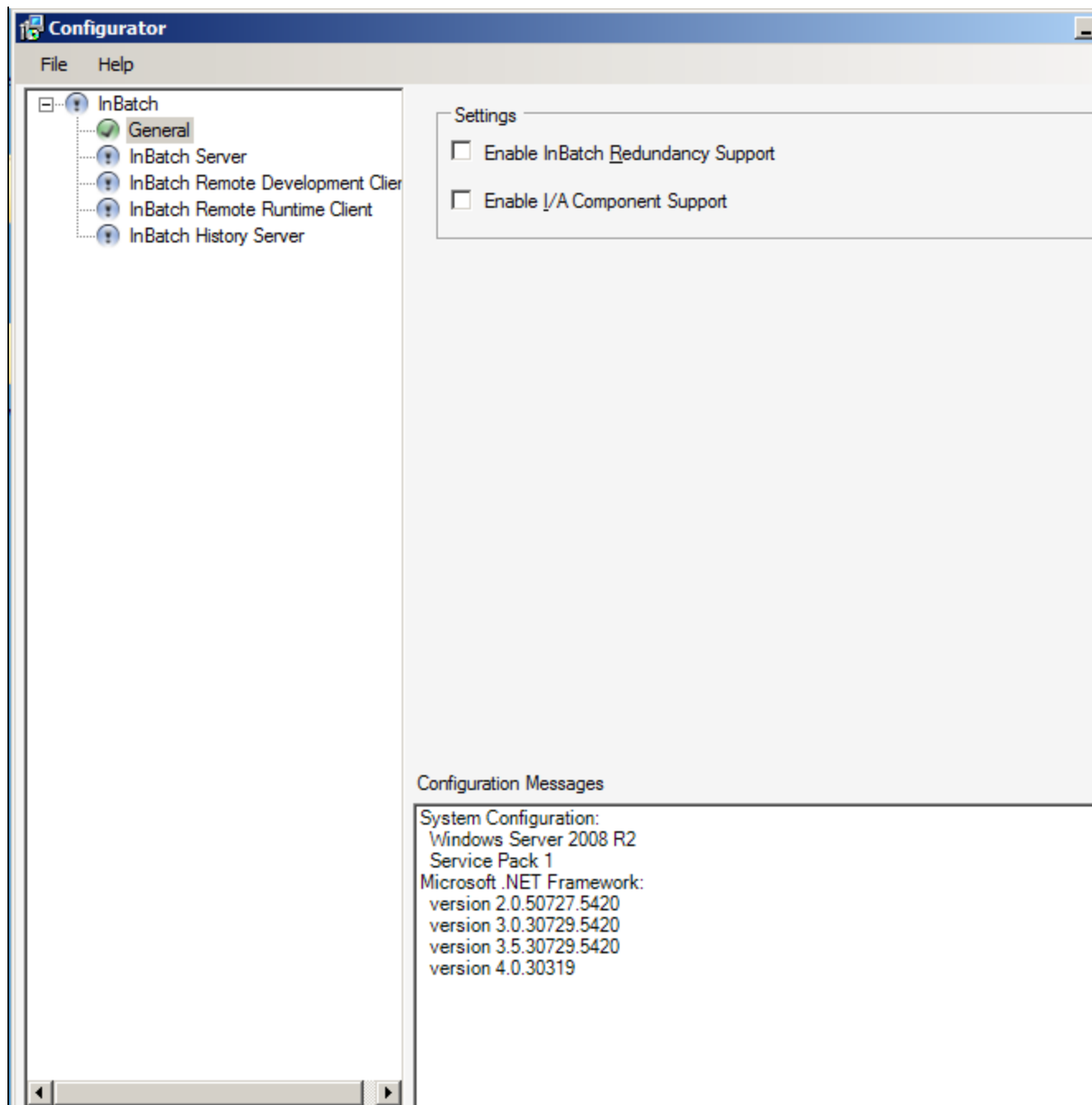
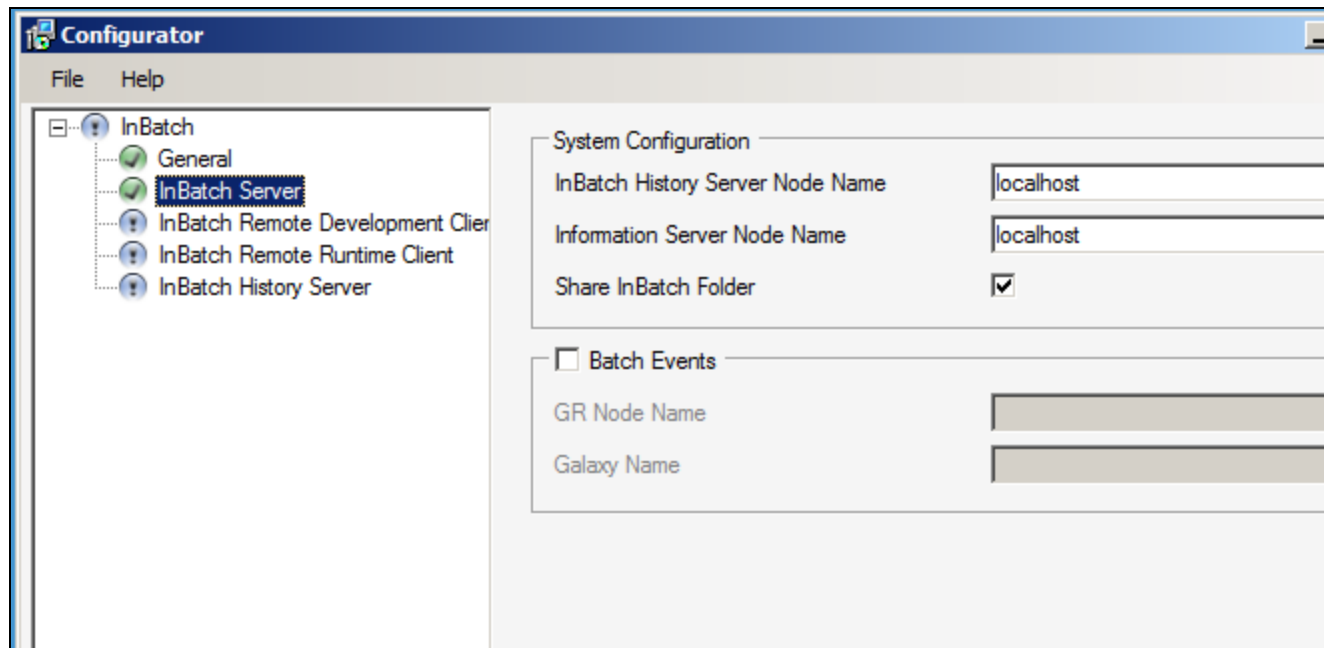


FIGURE 2: INBATCH CONFIGURATOR

5. When configuring the **InBatch Server** options, you will see a check box for **Batch Events** (Figure 3 below).

Leave this option unchecked, then return to it after you finish installing the System Platform 2012 R2 components and deploying a Platform. You need to have a Platform deployed before the Batch Events can be configured. Configuration occurs on the GR node

later in the *Tech Note*.



**FIGURE 3: INBATCH SERVER: DO NOT CHECK THE BATCH EVENTS OPTION**

6. Configure the **InBatch History Server**.

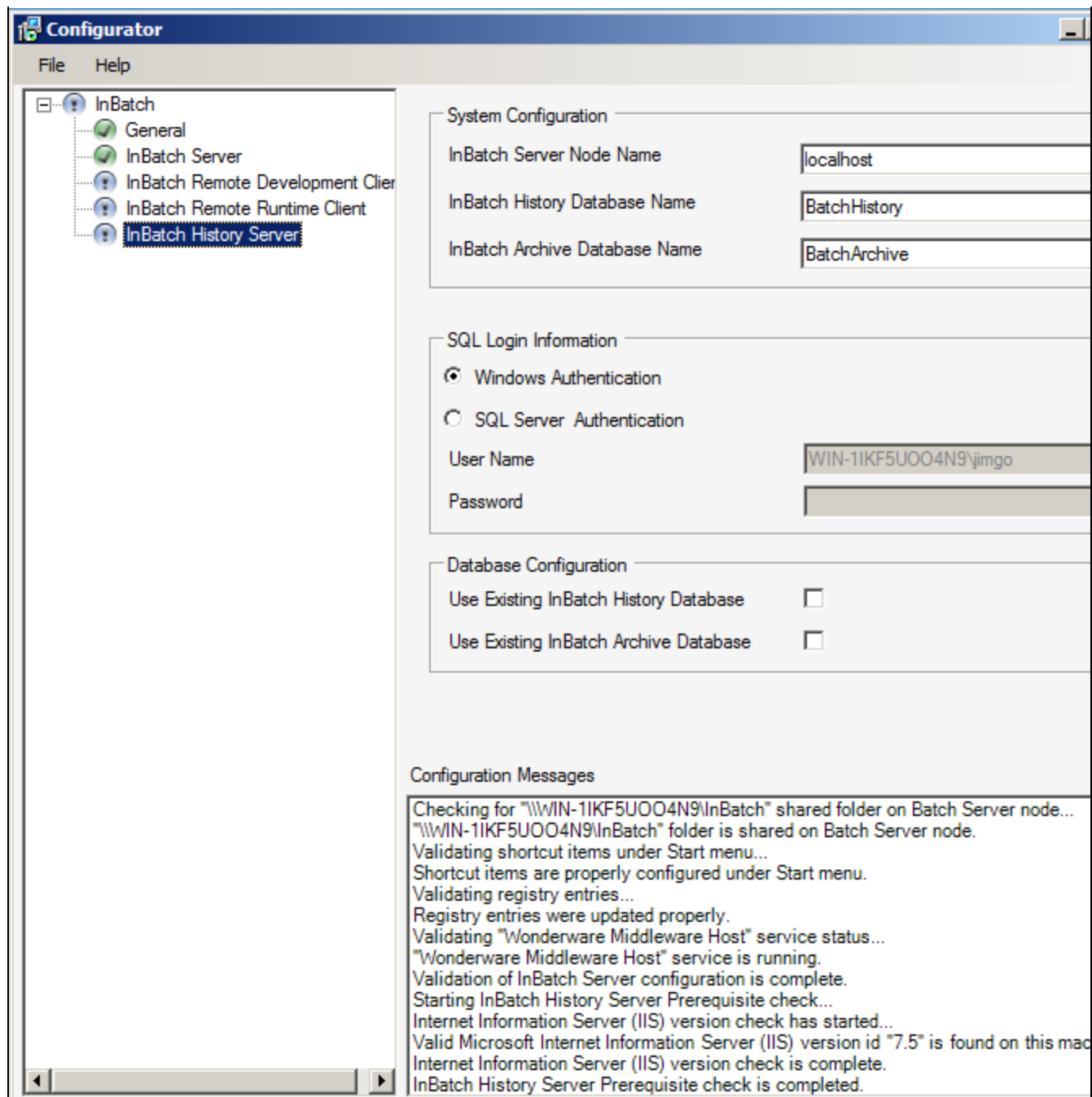


FIGURE 4: INBATCH HISTORY SERVER

The **InBatch History Server** configuration completes with no errors (Figure 5 below).

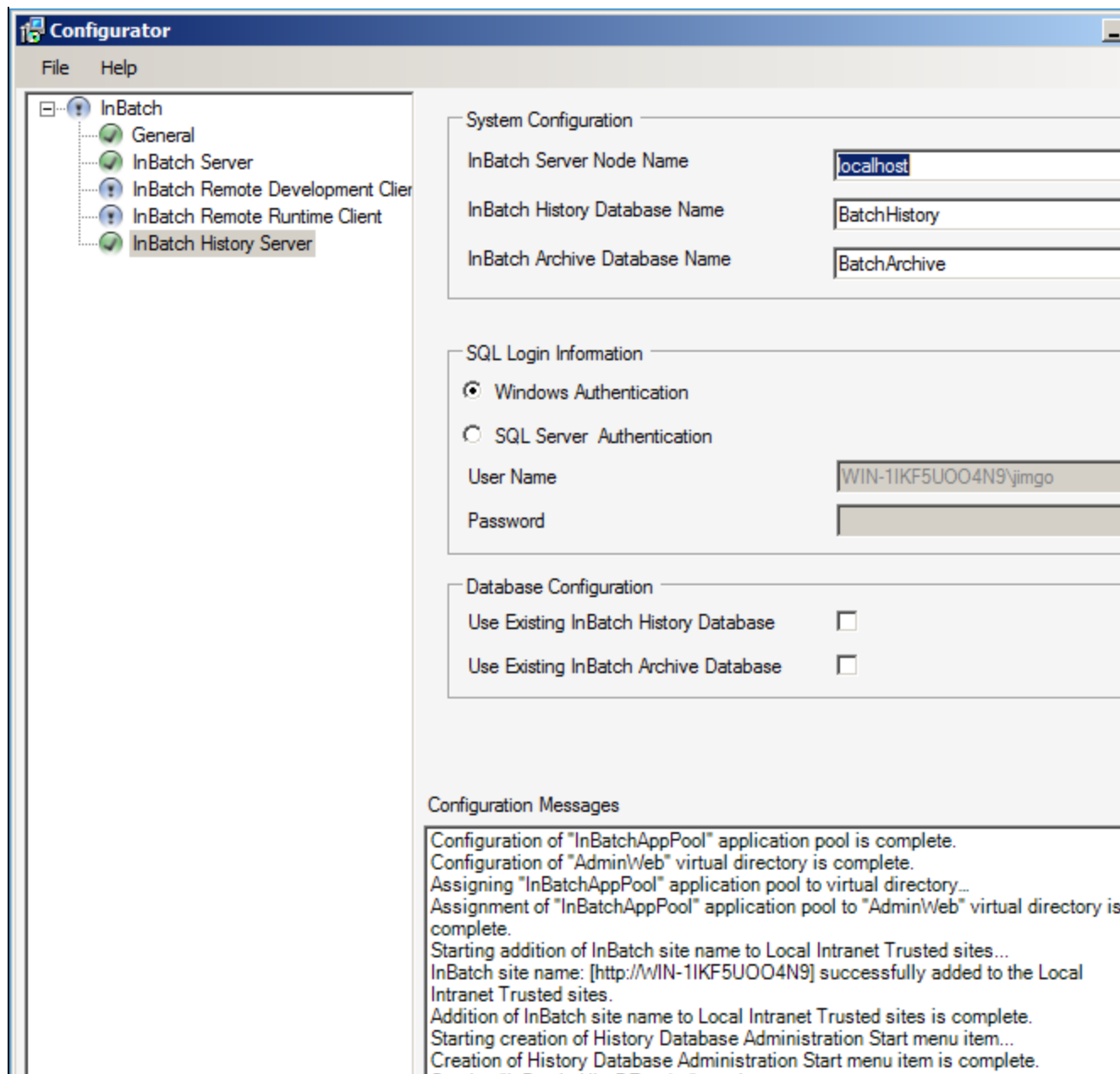


FIGURE 5: CONFIGURATION SUCCESSFUL

7. Install the System Platform 2012 R2 Runtime components and IDE on the InBatch Server node.
8. Click the **Product Based Selection** option.

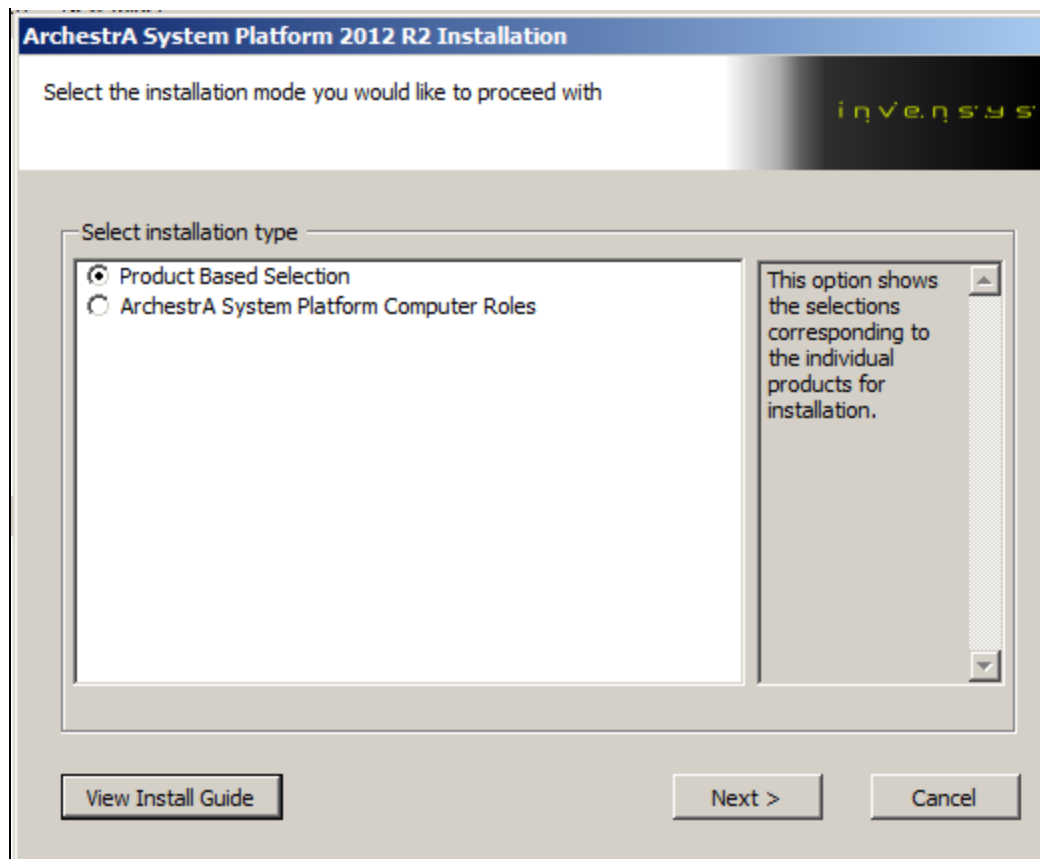
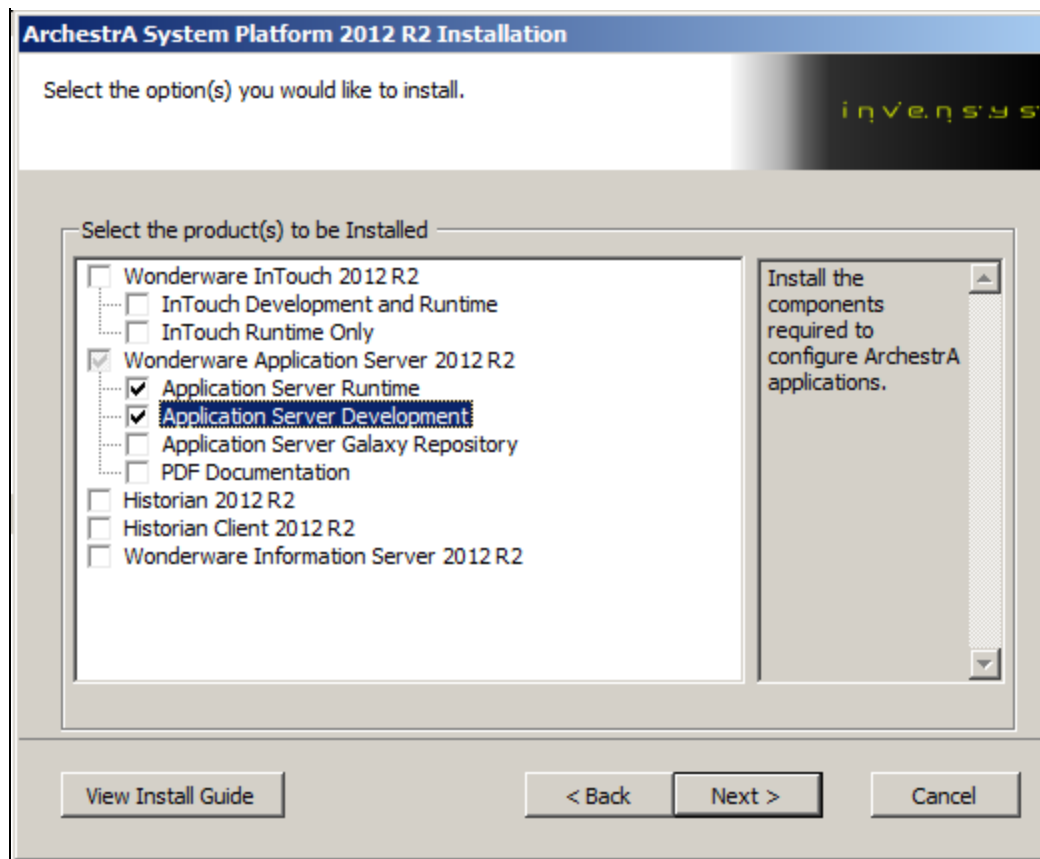


FIGURE 6: PRODUCT BASED SELECTION

9. Click the **Application Server Runtime** and the **Application Server Development** options.



**FIGURE 7: APPLICATION SERVER RUNTIME AND DEVELOPMENT COMPONENTS ON THE INBATCH SERVER NODE**

10. Only the IDE and Boot Strap are installed (Figure 8 below).



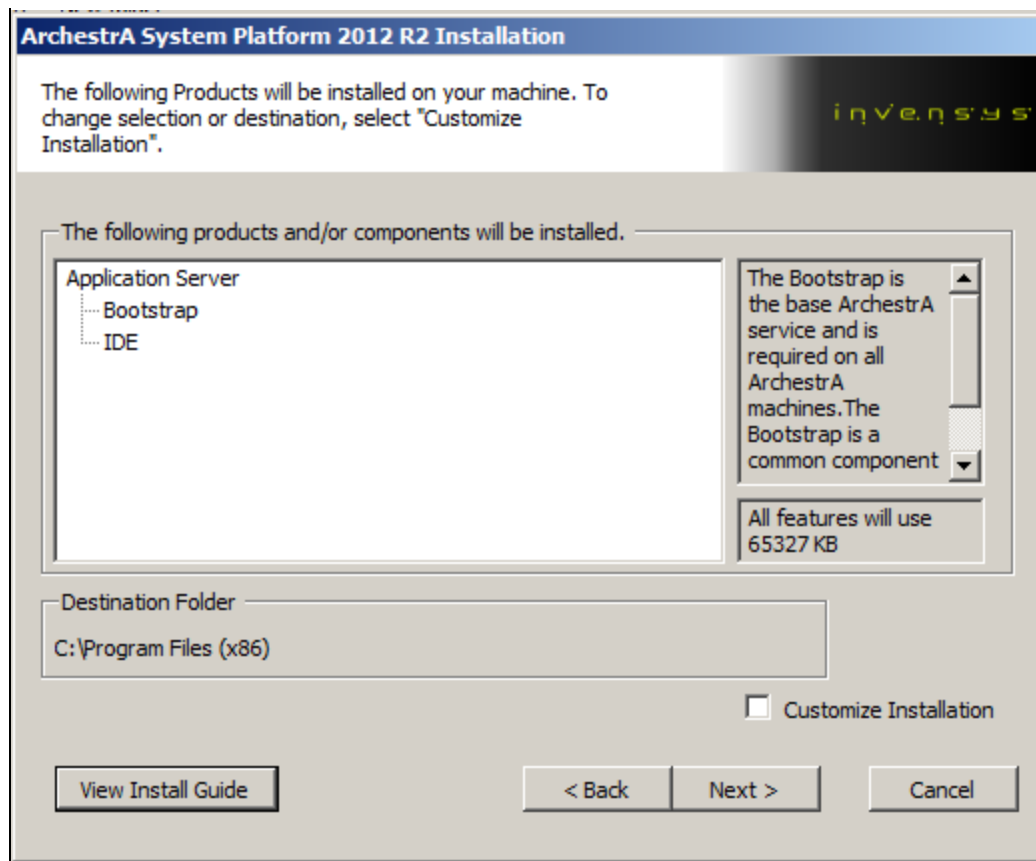
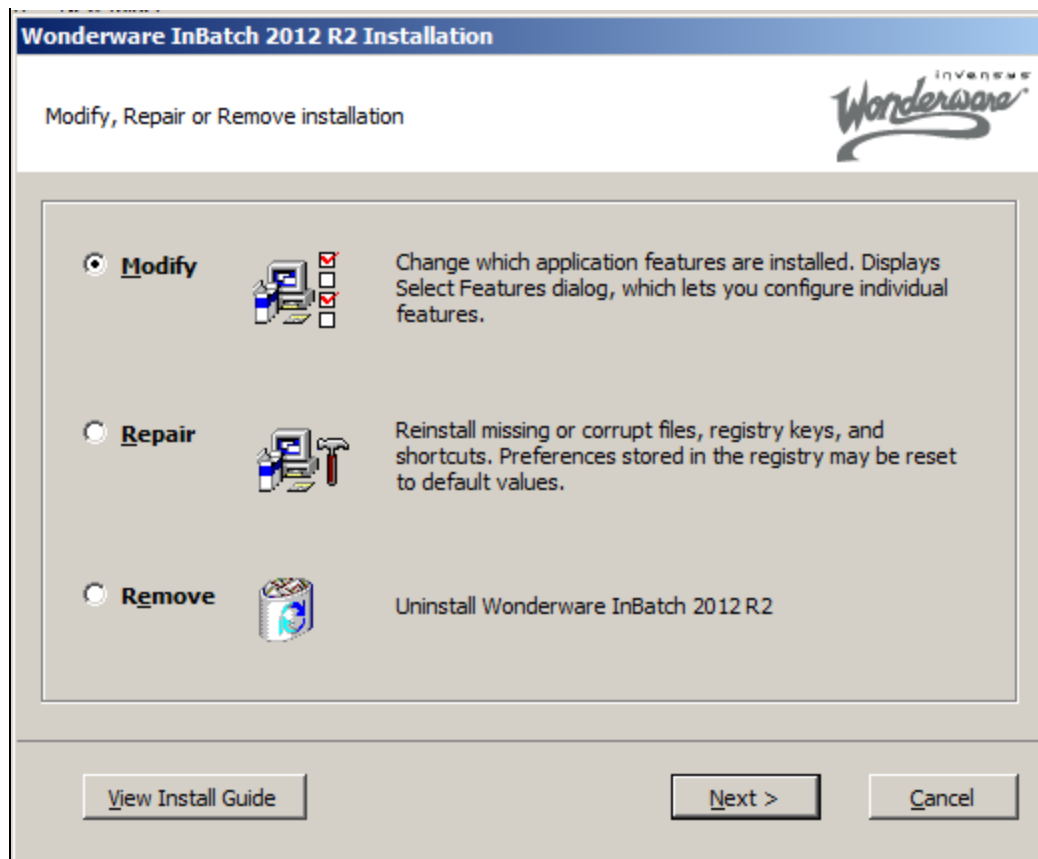


FIGURE 8: BOOTSTRAP AND IDE COMPONENTS

11. Install the InBatch Components for Arcestra IDE/IEE by clicking **Start**.
12. Click the **Modify** option.



**FIGURE 9: MODIFY THE INBATCH 2012 R2 INSTALLATION**

13. Add the InBatch Components for Archestra IDE/IEE per the install.

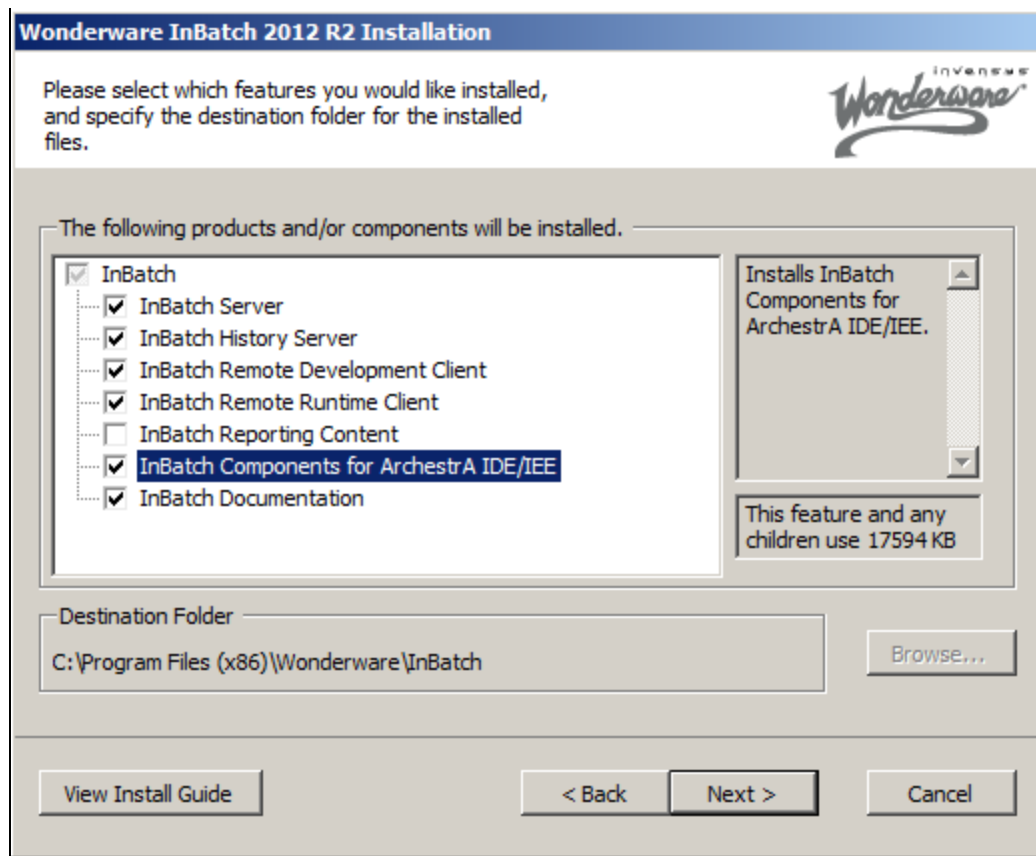


FIGURE 10: ADD THE **INBATCH COMPONENTS FOR ARCHESTR A IDE/IEE**

14. Go the GR node and install the **InBatch Components for ArchestrA IDE/IEE**.

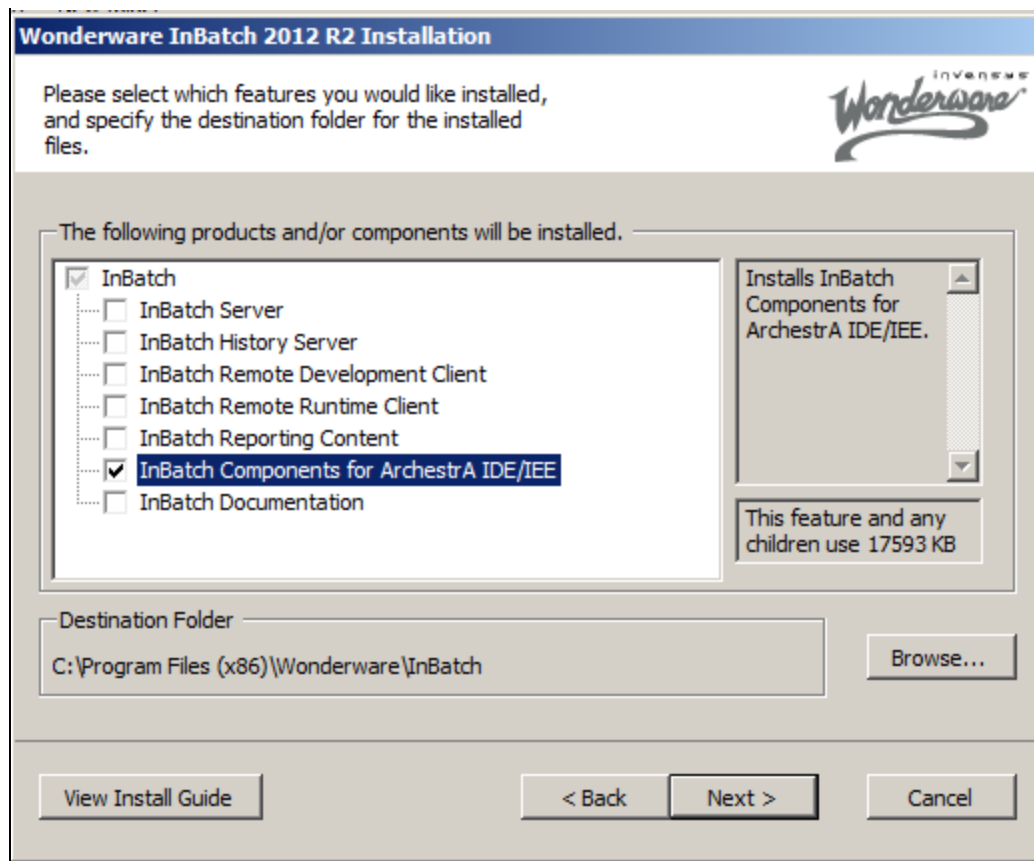
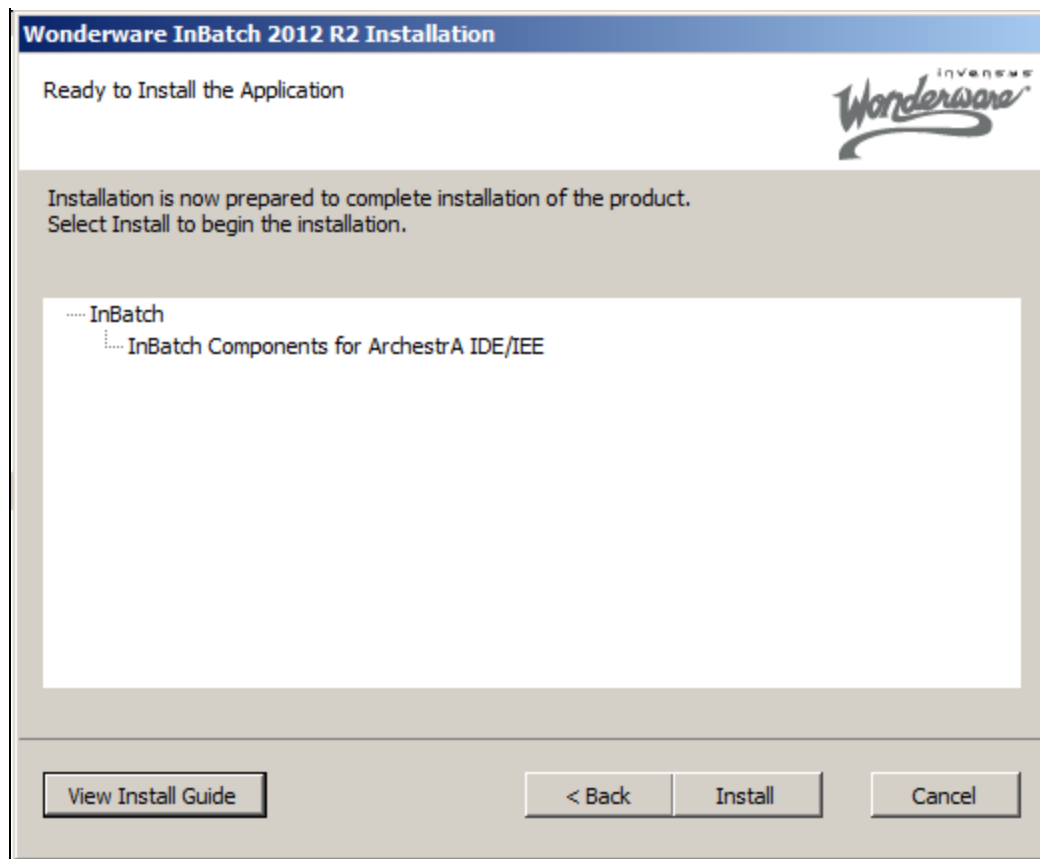


FIGURE 11: INSTALL INBATCH COMPONENTS ON THE GR NODE



**FIGURE 12: READY TO INSTALL INBATCH COMPONENTS**

15. Deploy a Platform to the Batch sever node.

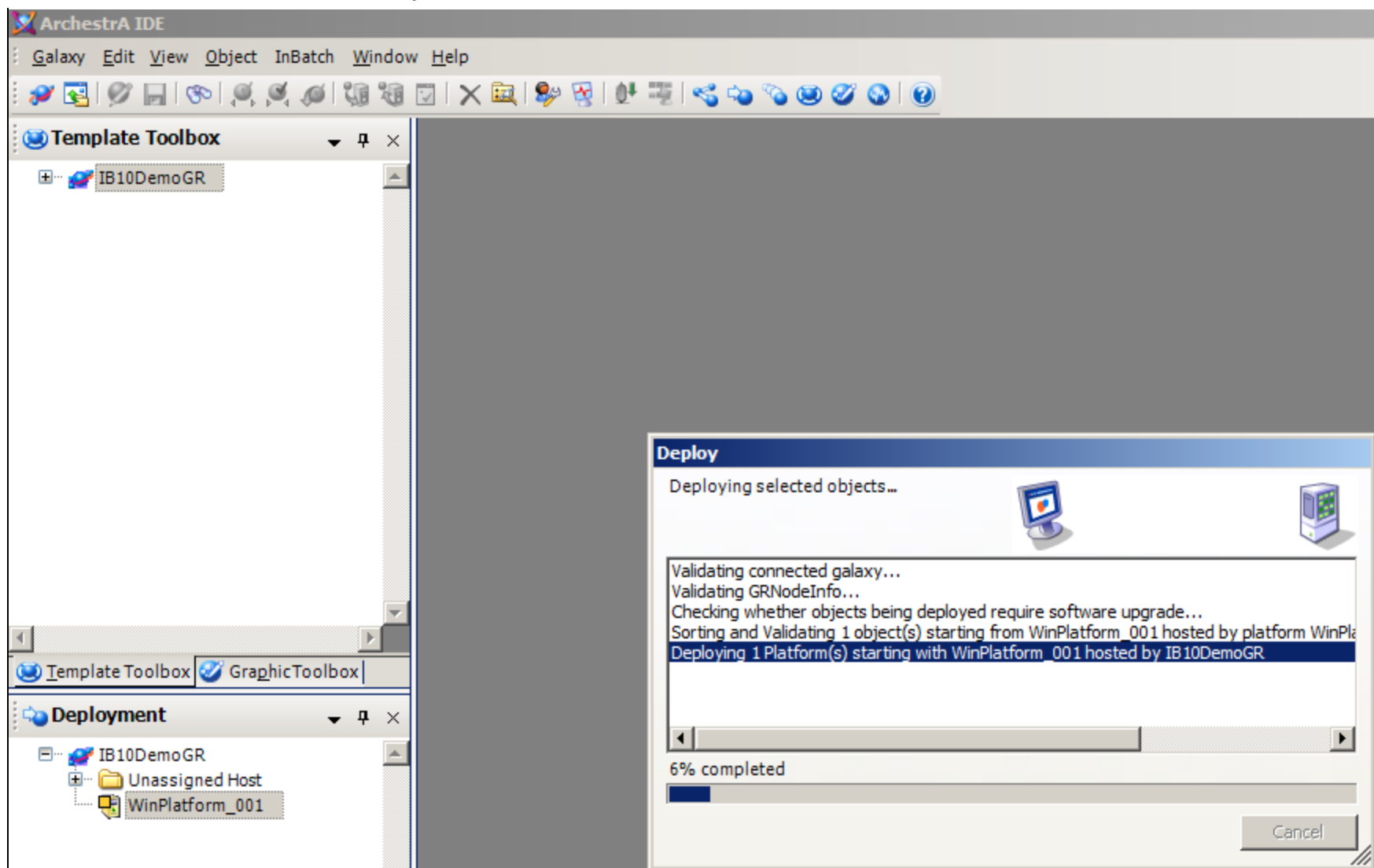
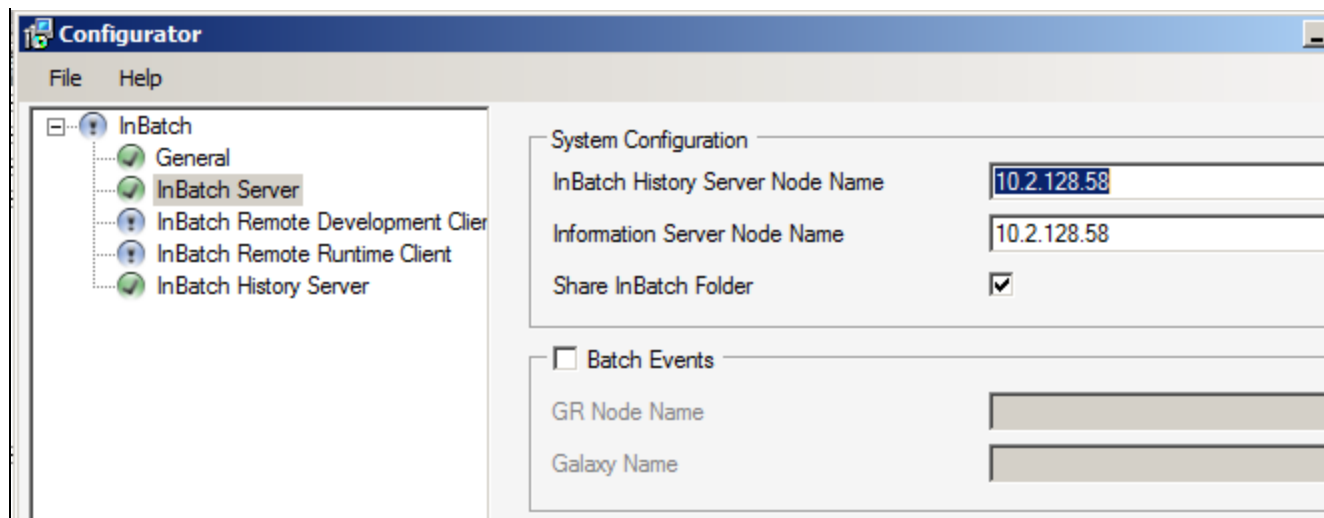


FIGURE 13: DEPLOY PLATFORM TO INBATCH SERVER

16. Go to the Batch Server node and open the Configurator. Click **InBatch Server**.



**FIGURE 14: ADD BATCH EVENTS TO THE GR AND GALAXY NODES**

17. Click **Batch Events** and add the correct **GR Node Name** and **Galaxy Name**.
18. Click **Configure**. You will see the last message **InBatch server feature configuration is complete**.

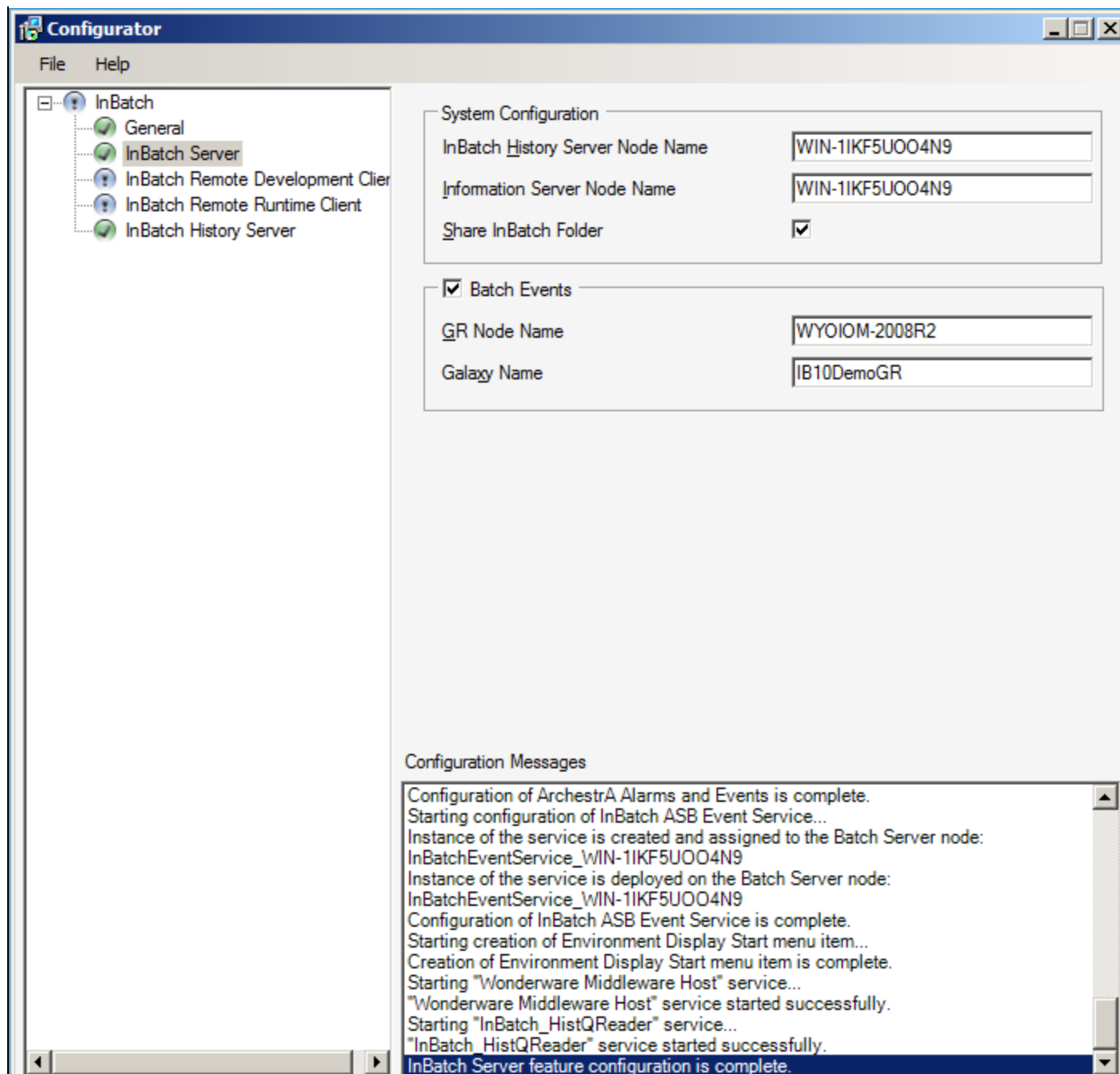


FIGURE 15: "INBATCH SERVER FEATURE CONFIGURATION IS COMPLETE" MESSAGE

- When the InBatch Server Configuration is successful, proceed to [Step 19 \(below\)](#).
- When the InBatch Server Configuration is not successful, you will see an error message similar to Figure 16 (below). Proceed to



the [Diagnostic Checkpoints section \(below\)](#).

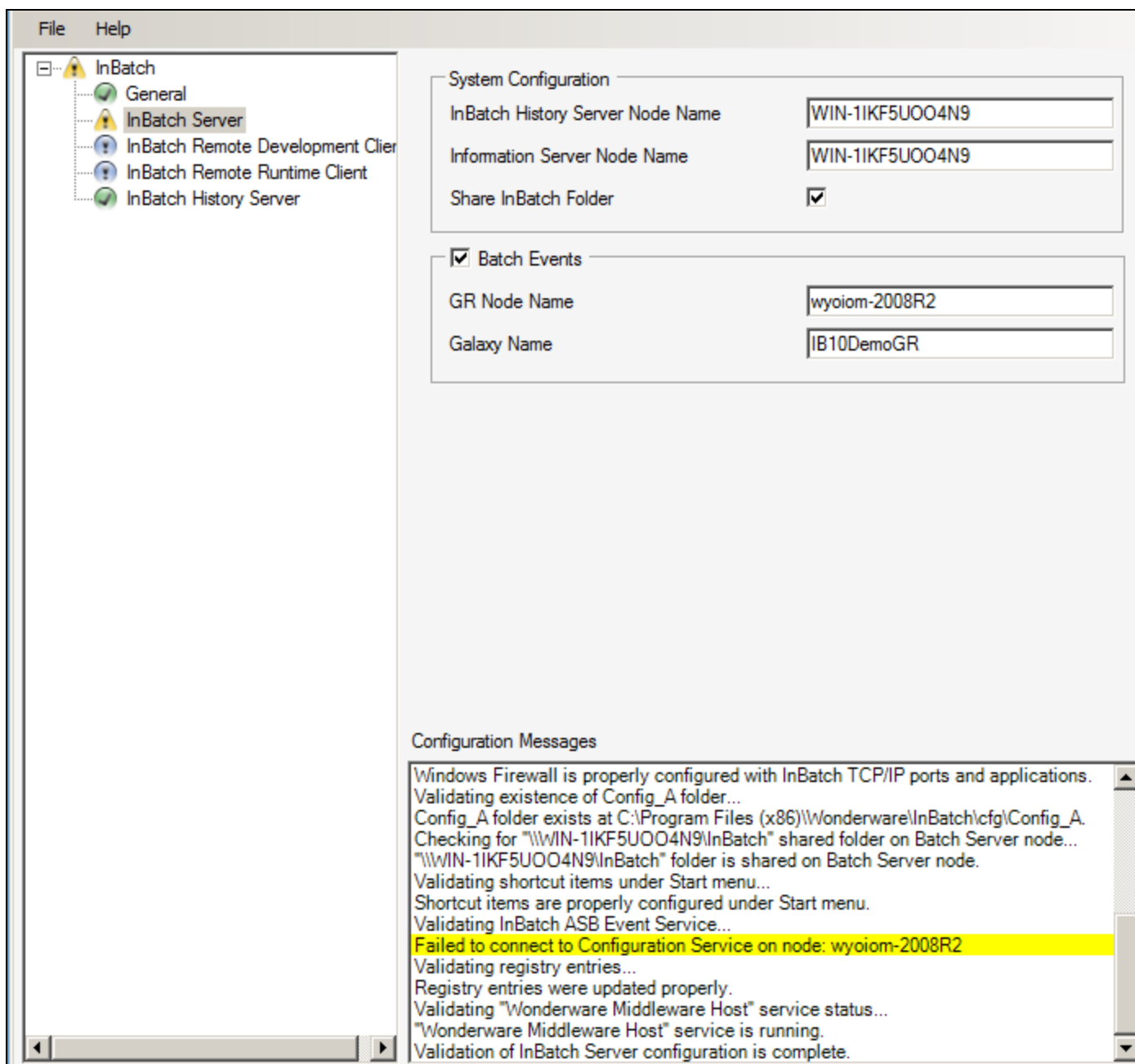


FIGURE 16: INBATCH SERVER FAILED TO CONNECT MESSAGE

## Diagnostic Checkpoints

The node name in the error string should be the GR Node from which the Platform is deployed.

1. On the GR node open **regedit** and check the following.

- Make sure the node registration string key **EndPointLocalDiscovery** machine value is the GR node machine name. If not change it to the correct name.
- The String key **ServiceRepositorynode** matches the GR node machine name.

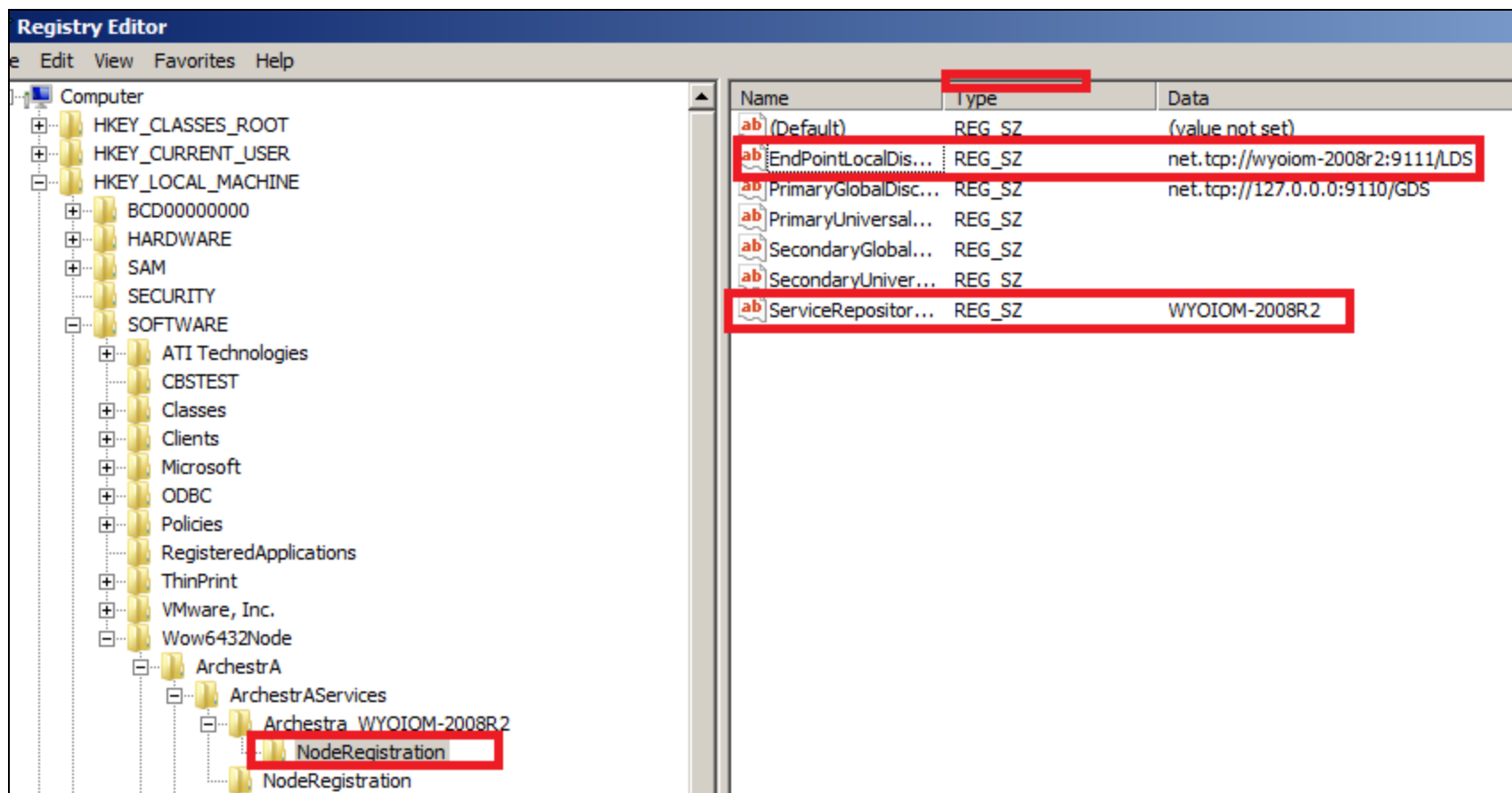
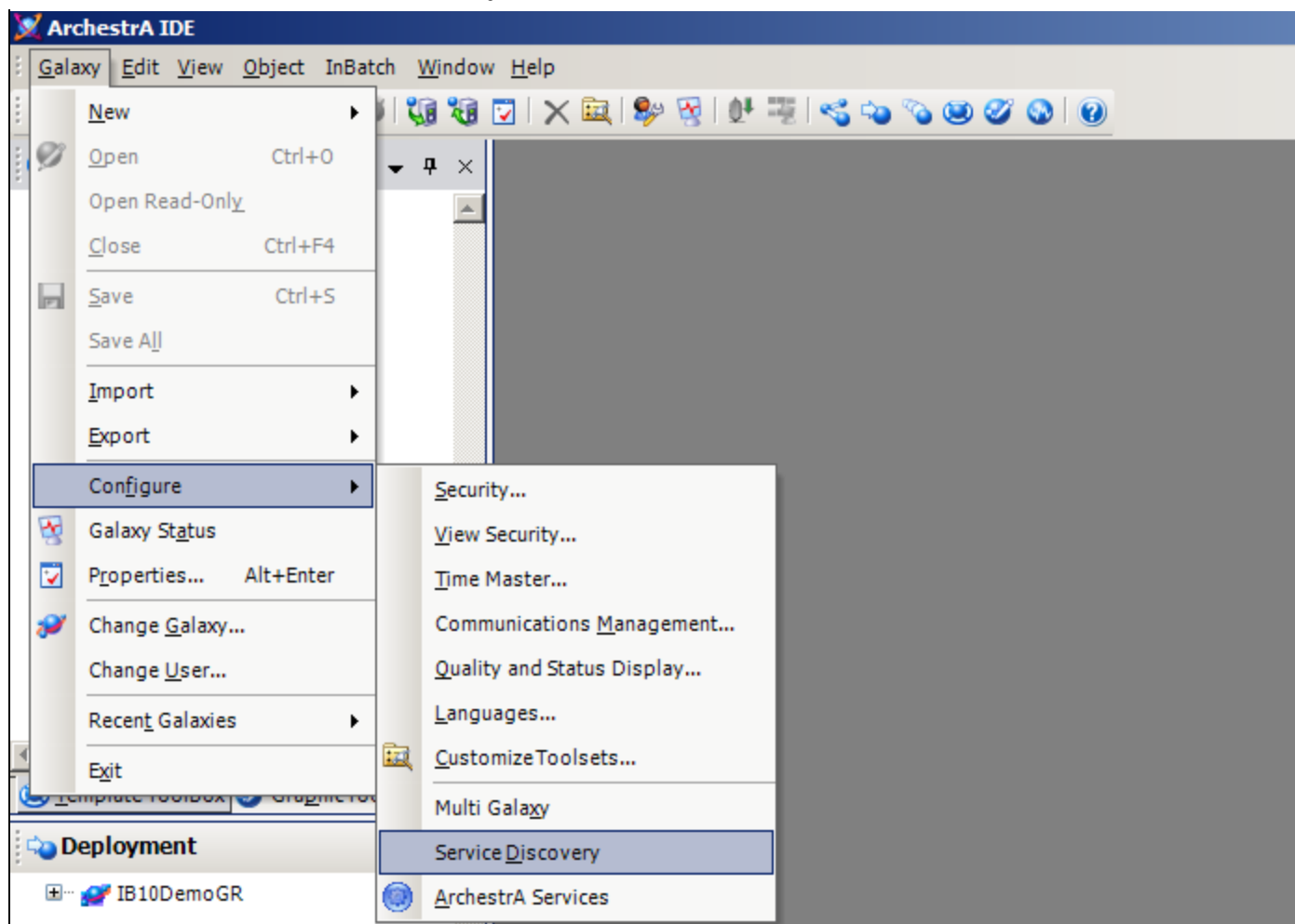


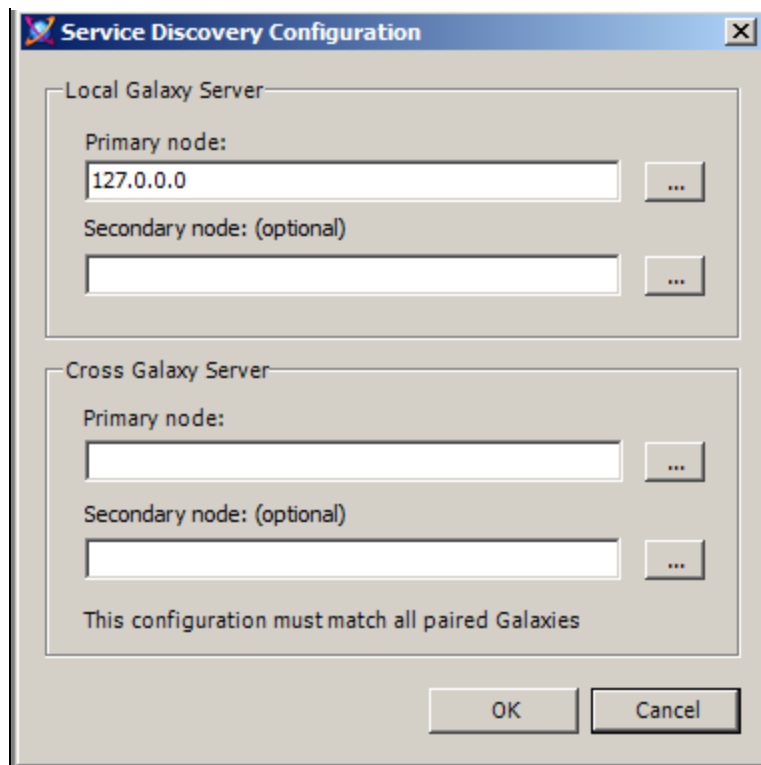
FIGURE 17: CLEAN UP THE REGISTRY

2. Start the IDE on the GR node and connect to the Galaxy.
3. On the main menu, click **Galaxy/Configure/Service Discovery**.



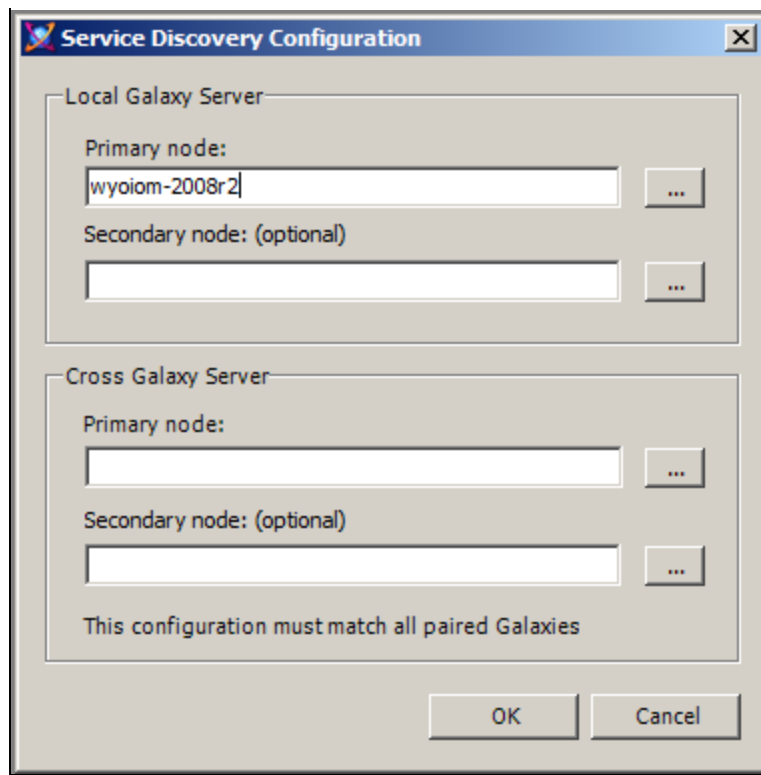
**FIGURE 18: IDE/SERVICE DISCOVERY**

4. When you open the Service Discovery window you will see the Primary node has an IP address. This is not correct. We need to add the GR node machine name here.



**FIGURE 19: LOCAL GALAXY SETTING**

5. Type the machine name in the **Primary node** field and click **OK** (Figure 20 below).



**FIGURE 20: REGISTERED/NETWORK SERVER NAME**

6. Return to the InBatch Server and stop/restart the **ArchestrA Watchdog Service**.

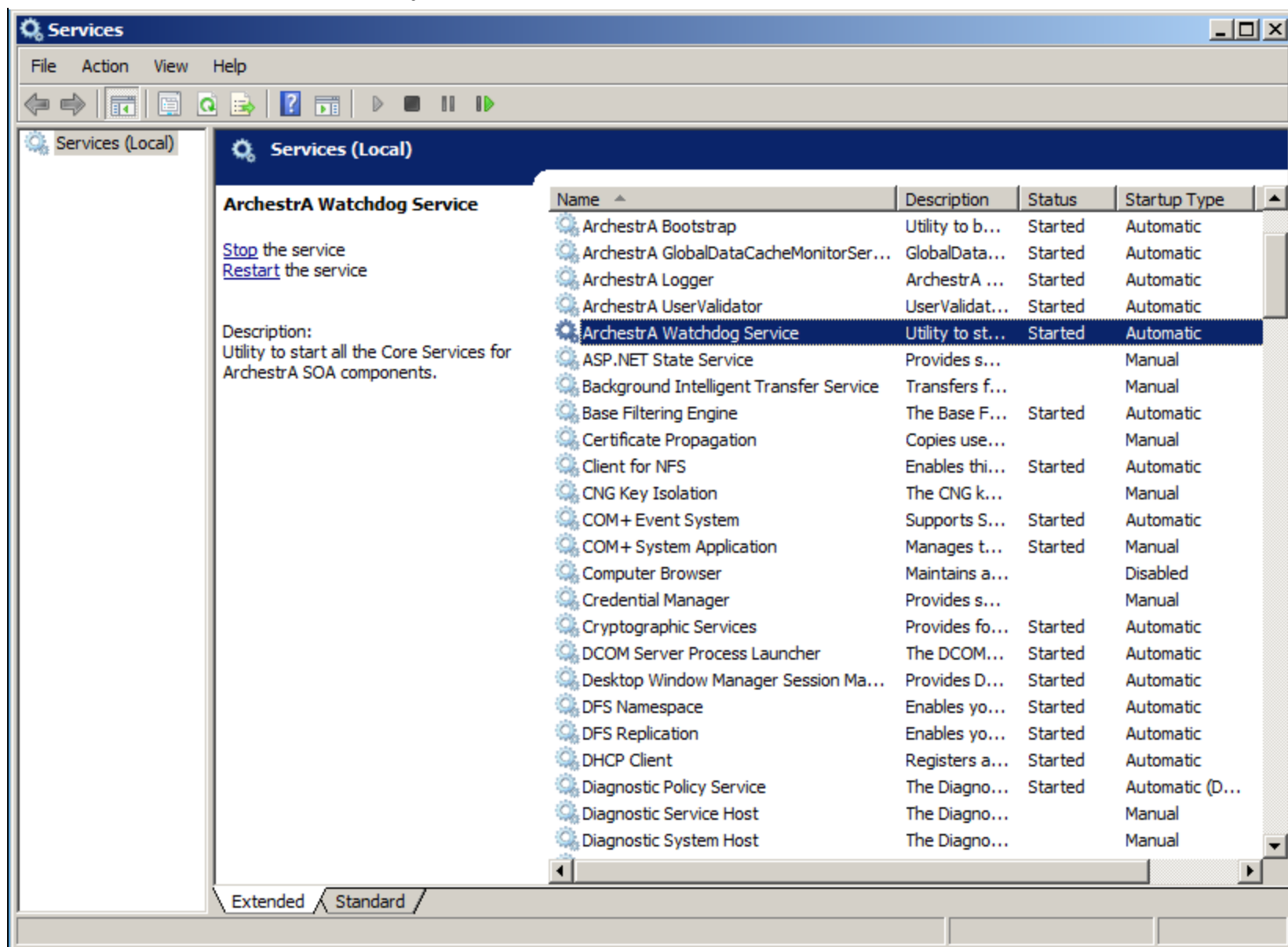


FIGURE 21: STOP/START THE ARCHESTRA WATCHDOG SERVICE

7. After the Watchdog Service starts, restart the Configurator and Configure the InBatch Server (Figure 22 below).

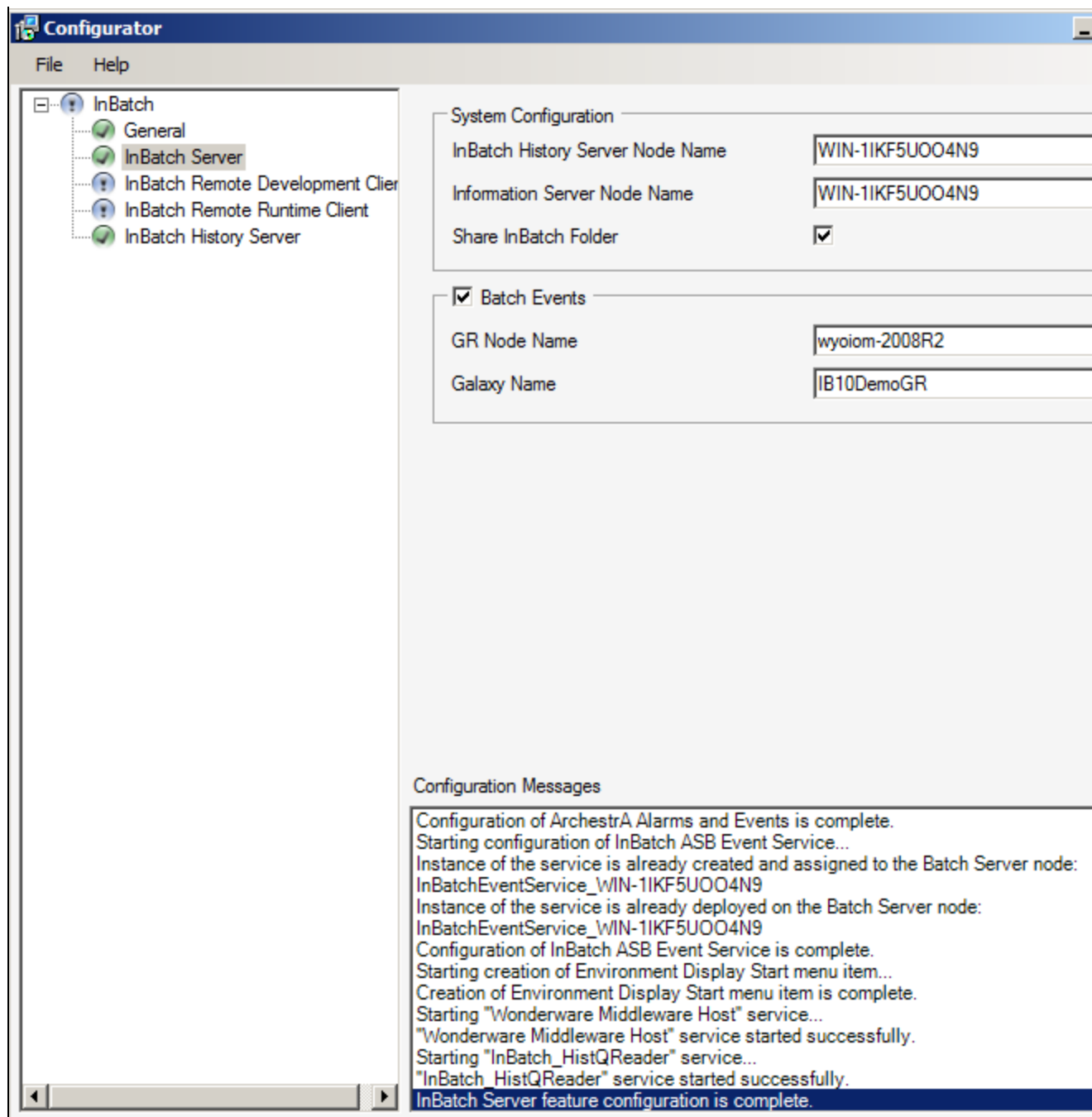


FIGURE 22: INBATCH SERVER CONFIGURATION COMPLETE

## Continue with the InBatch Event Services Configuration

19. On the GR, verify that the service was created on the GR node by clicking **Galaxy\Configure\Archestra Services**.

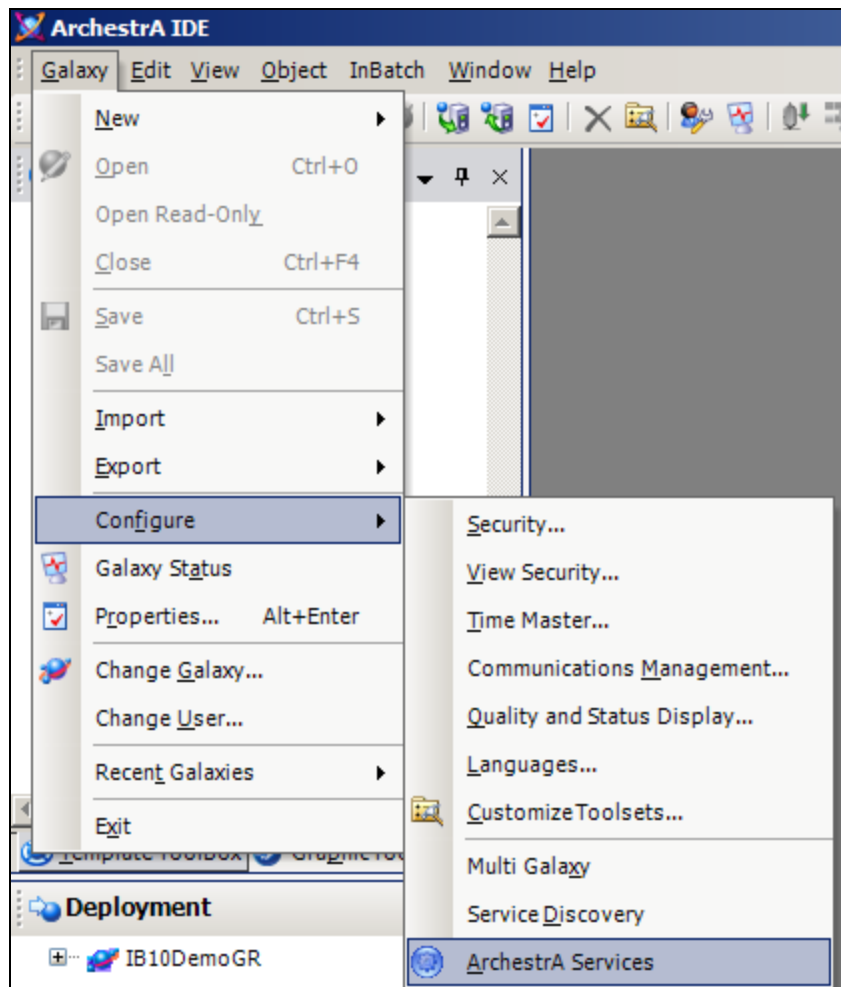


FIGURE 23: CONFIGURE/ARCESTRA SERVICES

20. Click **Event Service** to verify the InBatchEventService was created.



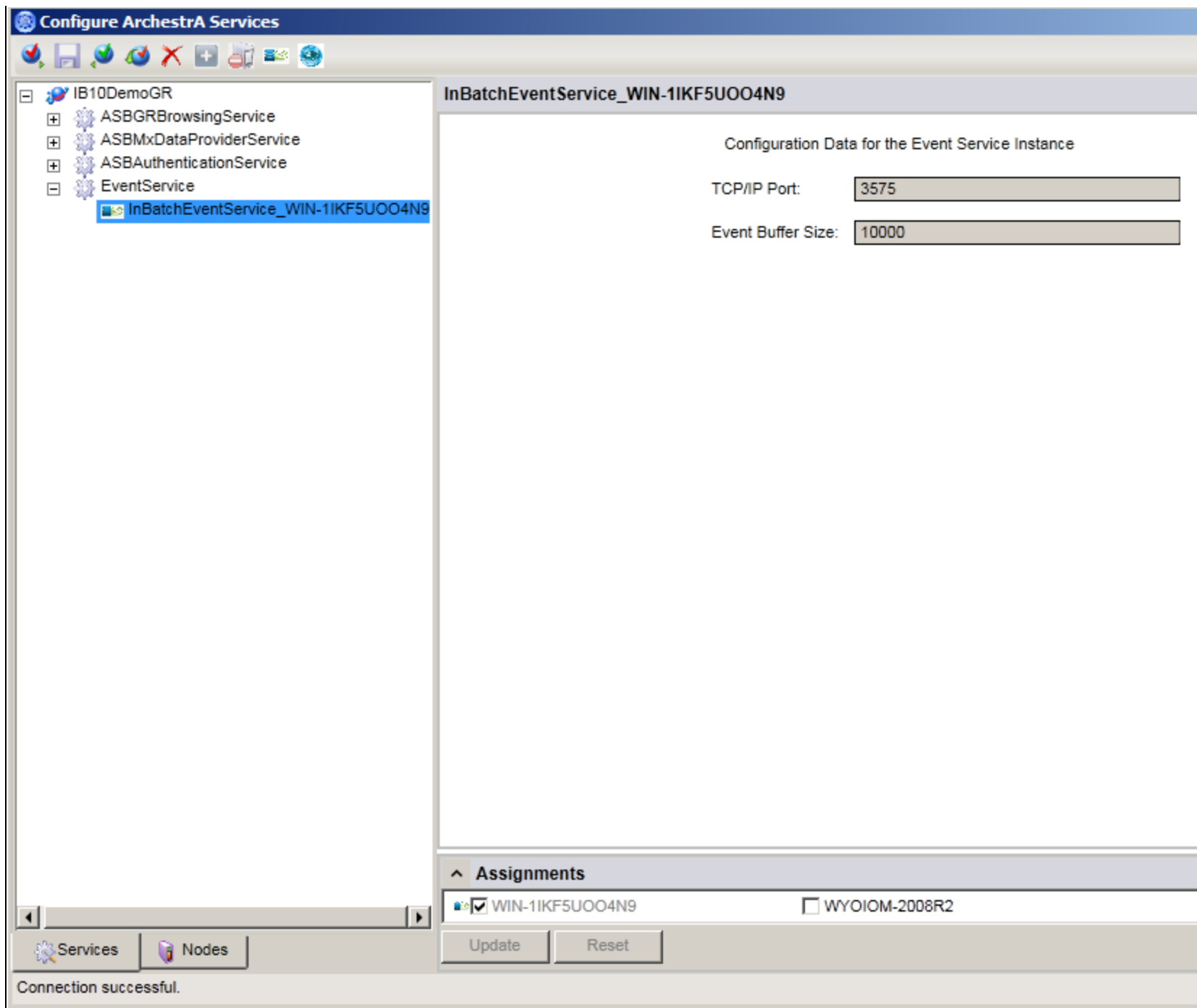


FIGURE 24: INBATCHEVENTSERVICE CREATED ON GR

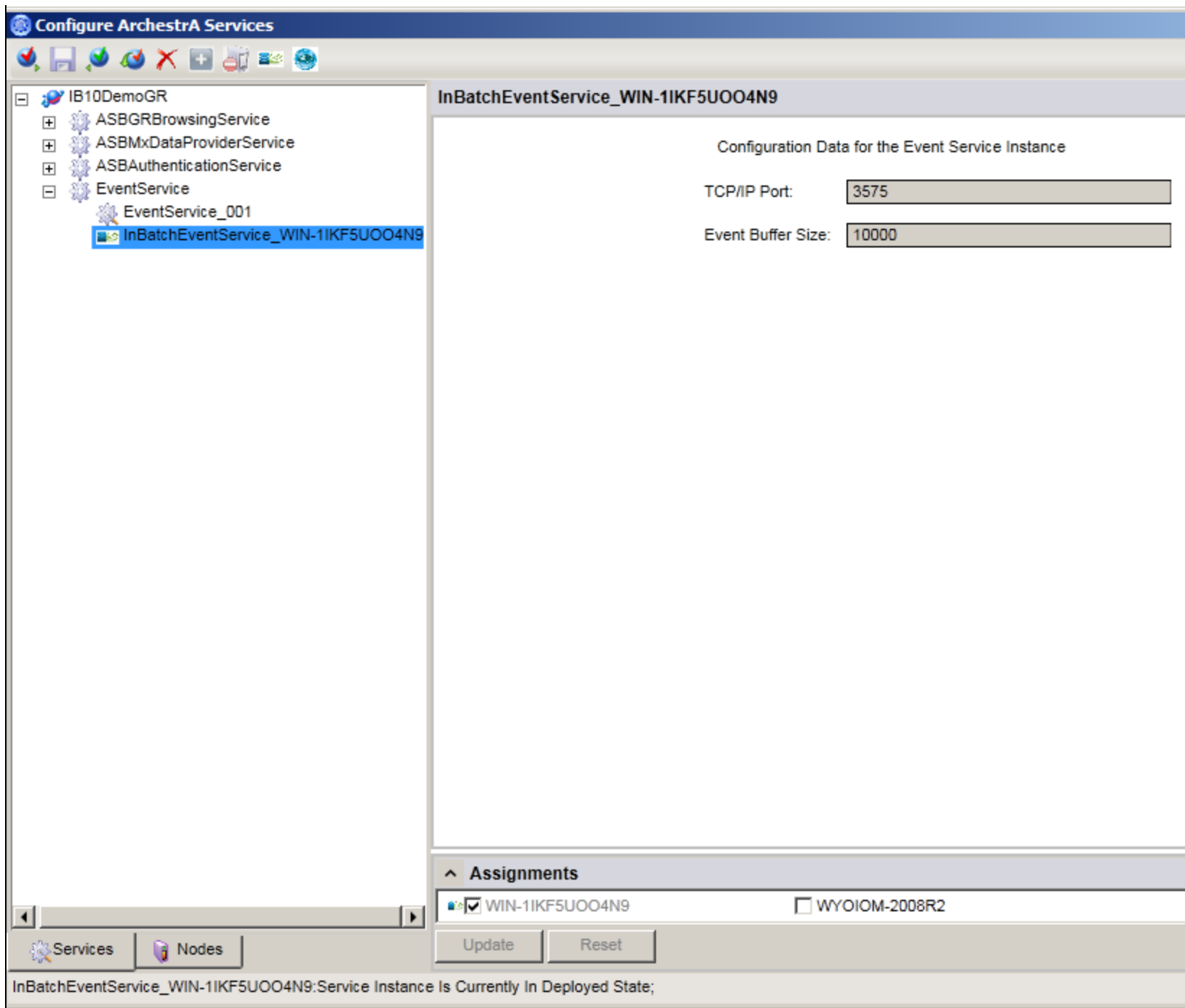


FIGURE 25: INBATCHEVENTSERVICE IS DEPLOYED

*Tech Notes* are published occasionally by Wonderware Technical Support. Publisher: Invensys Systems, Inc., 26561 Rancho Parkway South, Lake Forest, CA 92630. There is also technical information on our software products at [Wonderware Technical Support](#).

For technical support questions, send an e-mail to [wwsupport@invensys.com](mailto:wwsupport@invensys.com).

 [Back to top](#)

©2013 Invensys Systems, Inc. All rights reserved. No part of the material protected by this copyright may be reproduced or utilized in any form or by any means, electronic or mechanical, including photocopying, recording, broadcasting, or by any information storage and retrieval system, without permission in writing from Invensys Systems, Inc. [Terms of Use](#).