



---

# Customer information packet

## CEM3313T

10HP, 1770RPM, 3PH, 60HZ, 215TC, 3742M, OPSB, F

Class - None

Division - Not Applicable

## Specifications

Enclosure	OPSB
Frame	215TC
Frame Material	Steel
Frequency	60.00 Hz
Motor Letter Type	Three Phase
Output @ Frequency	10.000 HP @ 60 HZ
Phase	3
Synchronous Speed @ Frequency	1800 RPM @ 60 HZ
Voltage @ Frequency	230.0 V @ 60 HZ 460.0 V @ 60 HZ
XP Class and Group	None
XP Division	Not Applicable
Agency Approvals	CURUSEEV NEMA PREMIUM NEMA_PREMIUM UR CSA EEV
Ambient Temperature	40 °C
Auxillary Box	No Auxillary Box
Auxillary Box Lead Termination	None
Base Indicator	Rigid
Bearing Grease Type	Polyrex EM (-20F +300F)
Blower	None
Current @ Voltage	26.000 A @ 208.0 V 25.000 A @ 230.0 V 12.500 A @ 460.0 V
Design Code	B
Drip Cover	No Drip Cover
Duty Rating	CONT
Efficiency @ 100% Load	91.7 %
Electrically Isolated Bearing	Not Electrically Isolated
Feedback Device	NO FEEDBACK

## Part detail

Revision	S
Type	AC
Mech. spec.	37B102
Base	
Status	PRD/A
Elec. spec.	37WGT853
Layout	37LYB102
Eff. date	08-15-2022
CD Diagram	CD0005
Poles	04
Leads	9#14
Proprietary	False
Created date	07-30-2010

Front Face Code	Standard
Front Shaft Indicator	None
Heater Indicator	No Heater
High Voltage Full Load Amps	12.5 a
Insulation Class	F
Inverter Code	Inverter Ready
IP Rating	NONE
KVA Code	H
Lifting Lugs	Standard Lifting Lugs
Locked Bearing Indicator	Locked Bearing
Motor Lead Exit	Ko Box
Motor Lead Quantity/Wire Size	9 @ 14 AWG
Motor Lead Termination	Flying Leads
Motor Standards	NEMA
Motor Type	3742M
Mounting Arrangement	F1
Number of Poles	4
Overall Length	18.19 IN
Power Factor	82
Product Family	General Purpose
Pulley End Bearing Type	Ball
Pulley Face Code	C-Face
Pulley Shaft Indicator	Standard
Rodent Screen	None
RoHS Status	ROHS COMPLIANT
Service Factor	1.15
Shaft Diameter	1.375 IN
Shaft Extension Location	Pulley End
Shaft Ground Indicator	No Shaft Grounding
Shaft Rotation	Reversible
Shaft Slinger Indicator	No Slinger
Speed	1770 rpm
Speed Code	Single Speed
Starting Method	Direct on line

<b>Thermal Device - Bearing</b>	None
<b>Thermal Device - Winding</b>	None
<b>Vibration Sensor Indicator</b>	No Vibration Sensor
<b>Winding Thermal 1</b>	None
<b>Winding Thermal 2</b>	None

**Nameplate**

**NP3553LUA**

<b>CAT.NO.</b>	CEM3313T						
<b>SPEC.</b>	37B102T853G1						
<b>HP</b>	10						
<b>VOLTS</b>	230/460						
<b>AMPS</b>	25/12.5						
<b>RPM</b>	1770						
<b>FRAME</b>	215TC	<b>HZ</b>	60	<b>PH</b>	3		
<b>SF</b>	1.15	<b>CODE</b>	H	<b>DES</b>	B	<b>CLASS</b>	F
<b>NEMA NOM. EFF</b>	91.7	<b>PF</b>	82				
<b>RATING</b>	40C AMB-CONT						
<b>CC</b>	010A	<b>USABLE AT 208V</b>			N/A		
<b>DE</b>	6307	<b>ODE</b>	6206				
<b>ENCL</b>	OPSB	<b>SN</b>					
<b>VPWM INVERTER READY</b>							
<b>CT30-60(2:1) VT3-60(20:1)</b>							
<b>USABLE AT</b>	50HZ 7.5HP 190/380V 26.8/14.4A						SF1.0

**AC Induction Motor Performance Data**

Record # 53404

Typical performance - not guaranteed values

<b>Winding:</b> 37WGT853-R026		<b>Type:</b> 3742M		<b>Enclosure:</b> OPSB	
<b>Nameplate Data</b>			<b>460 V, 60 Hz: High Voltage Connection</b>		
<b>Rated Output (HP)</b>	10	<b>Full Load Torque</b>	29.7 LB-FT		
<b>Volts</b>	230/460	<b>Start Configuration</b>	direct on line		
<b>Full Load Amps</b>	25/12.5	<b>Breakdown Torque</b>	87.58 LB-FT		
<b>R.P.M.</b>	1770	<b>Pull-up Torque</b>	44.18 LB-FT		
<b>Hz</b>	60 <b>Phase</b>	3	<b>Locked-rotor Torque</b>	51.57 LB-FT	
<b>NEMA Design Code</b>	<b>B KVA Code</b>	H	<b>Starting Current</b>	86.72 A	
<b>Service Factor (S.F.)</b>	1.15		<b>No-load Current</b>	4.91 A	
<b>NEMA Nom. Eff.</b>	91.7	<b>Power Factor</b>	82	<b>Line-line Res. @ 25°C</b>	1.18 Ω
<b>Rating - Duty</b>	40C AMB-CONT		<b>Temp. Rise @ Rated Load</b>	34°C	
<b>S.F. Amps</b>			<b>Temp. Rise @ S.F. Load</b>	43°C	
			<b>Locked-rotor Power Factor</b>	37.9	
			<b>Rotor inertia</b>	1.03 LB-FT <sup>2</sup>	

**Load Characteristics 460 V, 60 Hz, 10 HP**

<b>% of Rated Load</b>	<b>25</b>	<b>50</b>	<b>75</b>	<b>100</b>	<b>125</b>	<b>150</b>	<b>S.F.</b>
<b>Power Factor</b>	48	70	80	84	86	86	83
<b>Efficiency</b>	87.7	91.8	92.2	91.7	90.8	89.5	91.4
<b>Speed</b>	1793	1785	1777	1769	1759	1749	1763
<b>Line amperes</b>	5.6	7.31	9.53	12.15	15	18.24	14.2

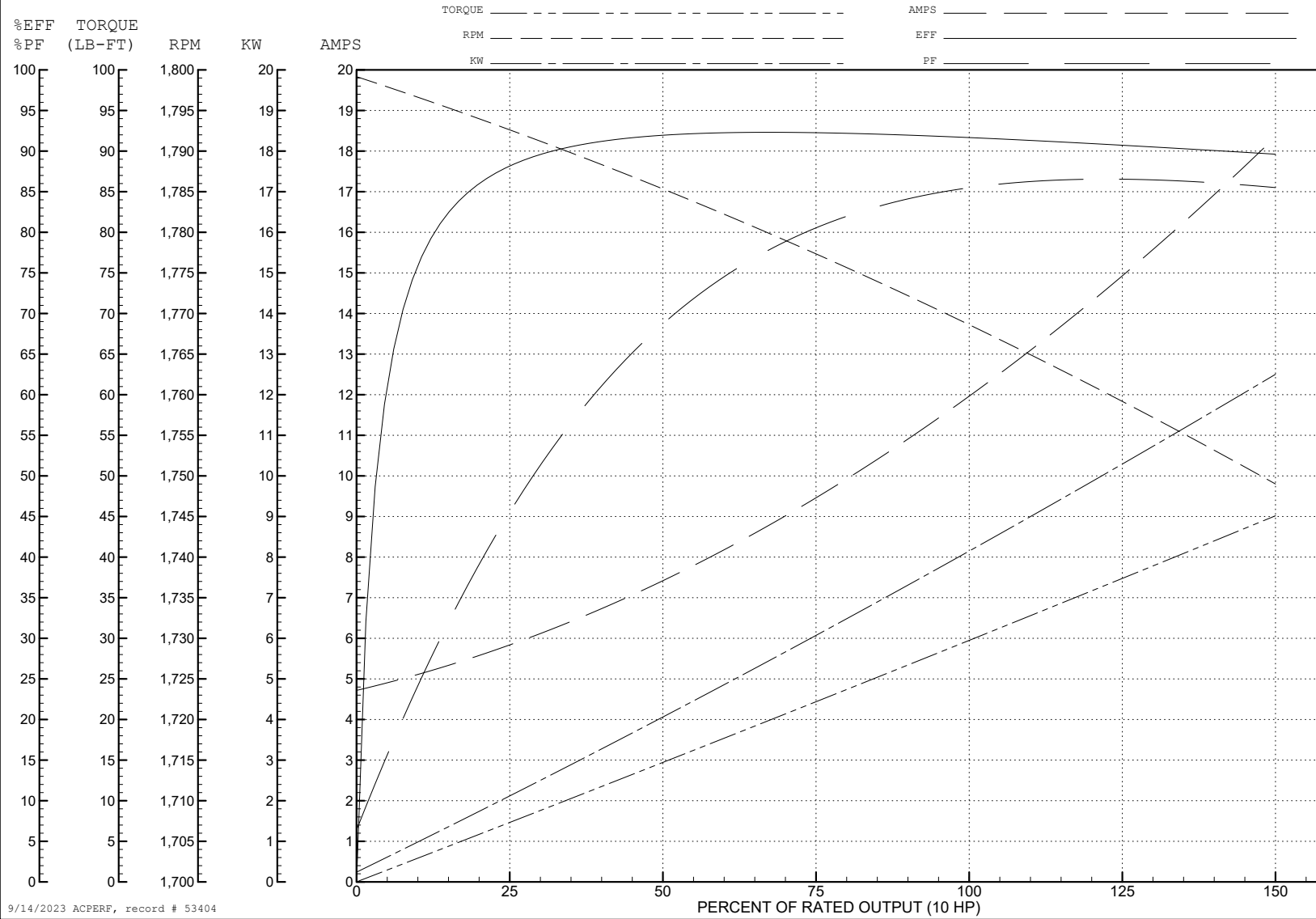
ABB Motors and Mechanical Inc.

WINDING # 37WGT853

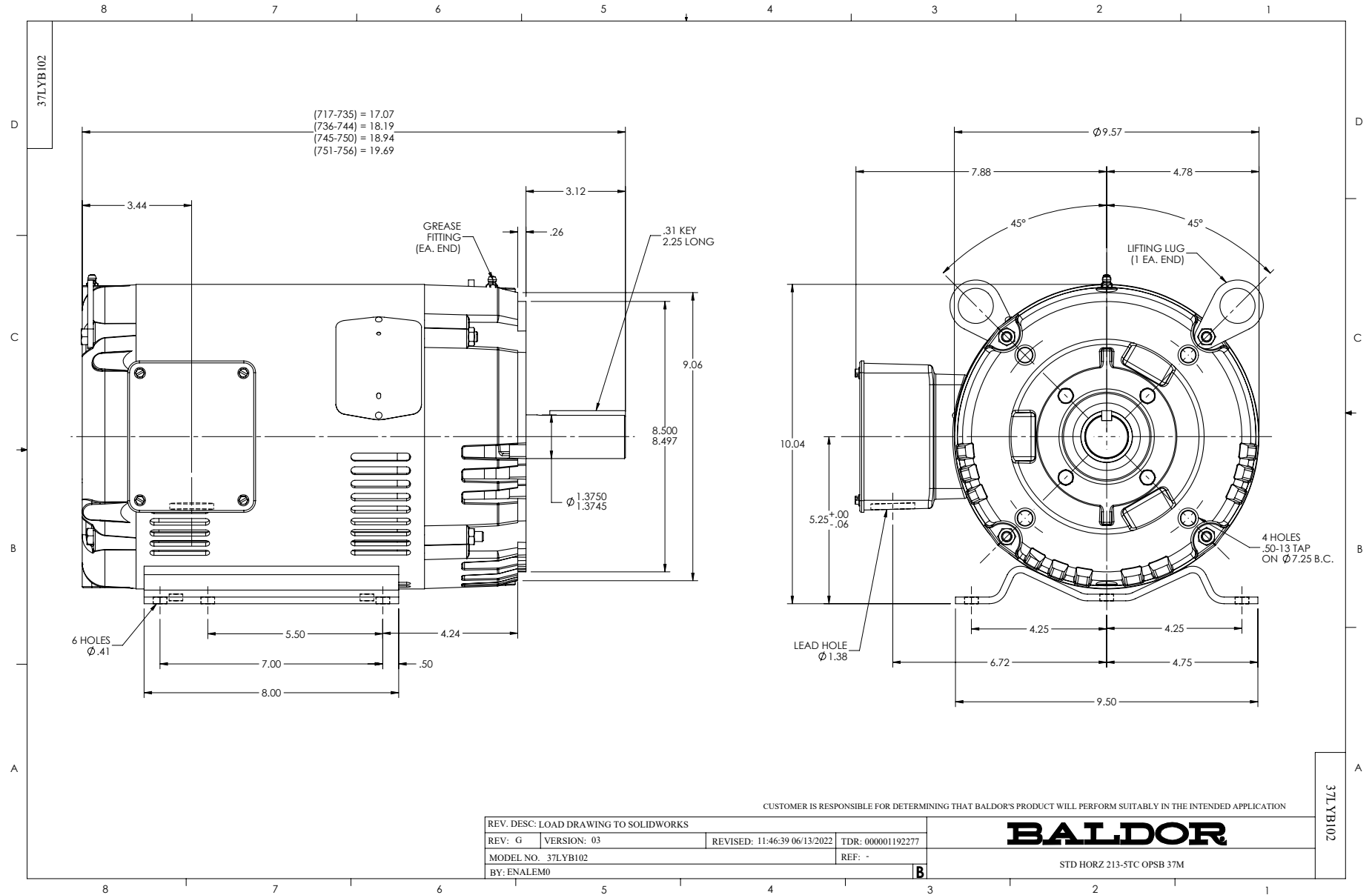
Typical performance - not guaranteed values.

10 HP 3 PH 60 HZ 1770 RPM 460 V 3742M

TORQUES (LB-FT): PO=87.58 PU=44.18 LR=51.57 LRA=86.72



9/14/2023 ACPERF, record # 53404





CD0005

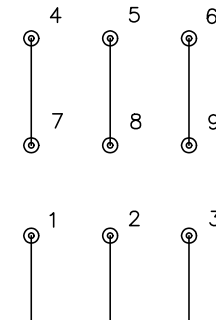


LOW VOLTAGE  
(2Y)



LINE

HIGH VOLTAGE  
(1Y)



LINE

NOTES:

1. INTERCHANGE ANY TWO LINE LEADS TO REVERSE ROTATION.
2. OPTIONAL THERMOSTATS ARE PROVIDED WHEN SPECIFIED.
3. ACTUAL NUMBER OF INTERNAL PARALLEL CIRCUITS MAY BE A MULTIPLE OF THOSE SHOWN ABOVE.
4. LEAD COLORS ARE OPTIONAL. LEADS MUST ALWAYS BE NUMBERED AS SHOWN.

CD0005

REV. DESC: REVISE TO SHOW OPTIONAL COLORS			
REV. LTR: E	BY: JLP	REVISED: 01/19/99 10:15	TDR: 0171435
S00000		FILE: AAA00005140	MDL: -
		MTL: -	

**BALDOR ELECTRIC Co.**

3PH, DV, 9 LEADS