

BALDOR® • RELIANCE®

Customer information packet

CFSWDM3711T-E

10HP, 3500RPM, 3PH, 60HZ, 215TC, 3744M, TEFC, F

Class - None

Division - Not Applicable

Copyright © All product information within this document is subject to ABB Motors and Mechanical Inc. copyright © protection, unless otherwise noted.

9/14/2023 2:08:13 PM

Specifications

Enclosure	TEFC
Frame	215TC
Frame Material	Stainless Steel
Frequency	60.00 Hz
Motor Letter Type	Three Phase
Output @ Frequency	10.000 HP @ 60 HZ
Phase	3
Synchronous Speed @ Frequency	3600 RPM @ 60 HZ
Voltage @ Frequency	230.0 V @ 60 HZ 460.0 V @ 60 HZ
XP Class and Group	None
XP Division	Not Applicable
Agency Approvals	CSA CSA EEV NEMA PREMIUM UR
Ambient Temperature	40 °C
Auxillary Box	No Auxillary Box
Auxillary Box Lead Termination	None
Base Indicator	Rigid
Bearing Grease Type	Polyrex EM (-20F +300F)
Blower	None
Current @ Voltage	23.000 A @ 208.0 V 21.200 A @ 230.0 V 10.600 A @ 460.0 V
Design Code	A
Drip Cover	No Drip Cover
Duty Rating	CONT
Efficiency @ 100% Load	91.7 %
Electrically Isolated Bearing	Not Electrically Isolated
Feedback Device	NO FEEDBACK
Front Face Code	Standard

Part detail

Revision	R
Type	AC
Mech. spec.	37Q242
Base	
Status	PRD/A
Elec. spec.	37WGS137
Layout	37LYQ242
Eff. date	03-08-2023
CD Diagram	CD0005
Poles	02
Leads	9#14
Proprietary	False
Created date	08-02-2017

Front Shaft Indicator	None
Heater Indicator	No Heater
High Voltage Full Load Amps	10.6 a
Insulation Class	H
Inverter Code	Inverter Ready
KVA Code	L
Lifting Lugs	Standard Lifting Lugs
Locked Bearing Indicator	Locked Bearing
Motor Lead Exit	Ko Box
Motor Lead Quantity/Wire Size	9 @ 14 AWG
Motor Lead Termination	Flying Leads
Motor Standards	NEMA
Motor Type	3744M
Mounting Arrangement	F1
Number of Poles	2
Overall Length	20.68 IN
Power Factor	94
Product Family	WD All SS Encapsulated
Pulley End Bearing Type	Sealed Bearing
Pulley Face Code	C-Face
Pulley Shaft Indicator	Standard
Rodent Screen	None
RoHS Status	ROHS COMPLIANT
Service Factor	1.15
Shaft Diameter	1.375 IN
Shaft Extension Location	Pulley End
Shaft Ground Indicator	No Shaft Grounding
Shaft Rotation	Reversible
Shaft Slinger Indicator	No Slinger
Speed	3500 rpm
Speed Code	Single Speed
Starting Method	Direct on line
Thermal Device - Bearing	None
Thermal Device - Winding	None

Vibration Sensor Indicator**No Vibration Sensor****Winding Thermal 1****None****Winding Thermal 2****None**

Nameplate

NP1953K01									
CAT.NO.	CFSWDM3711T-E								
SPEC.	37Q242S137G1								
HP	10								
VOLTS	230/460								
AMPS	21.2/10.6								
R.P.M.	3500								
FRAME	215TC		HZ	60		PH	3		
SER.F.	1.15	CODE	L	DES.	A	CLASS	H		
NEMA NOM. EFF.	91.7		P.F.	94					
RATING	40C AMB-CONT								
CC	010A		USABLE AT 208V	N/A					
DE	6307		ODE	6307					
ENCL	TEFC	SN							
	4:1CT, 10:1VT								

AC Induction Motor Performance Data

Record # 57389

Typical performance - not guaranteed values

Winding: 37WGS137-R011		Type: 3744M		Enclosure: TEFC	
Nameplate Data			460 V, 60 Hz: High Voltage Connection		
Rated Output (HP)	10	Full Load Torque	15 LB-FT		
Volts	230/460	Start Configuration	direct on line		
Full Load Amps	21.2/10.6	Breakdown Torque	89.4 LB-FT		
R.P.M.	3500	Pull-up Torque	39 LB-FT		
Hz	60 Phase	3	Locked-rotor Torque	46.5 LB-FT	
NEMA Design Code	A KVA Code	L	Starting Current	124 A	
Service Factor (S.F.)	1.15	No-load Current	4.28 A		
NEMA Nom. Eff.	91.7	Power Factor	94	Line-line Res. @ 25°C	0.659 Ω
Rating - Duty	40C AMB-CONT		Temp. Rise @ Rated Load	67°C	
S.F. Amps			Temp. Rise @ S.F. Load	82°C	
			Locked-rotor Power Factor	31.5	
			Rotor inertia	0.402 LB-FT ²	

Load Characteristics 460 V, 60 Hz, 10 HP

% of Rated Load	25	50	75	100	125	150	S.F.
Power Factor	56	77	86	91	91	92	91
Efficiency	81.8	88.7	90.2	91	90.1	89.7	90.5
Speed	3579	3557	3535	3510	3486	3459	3496
Line amperes	4.99	6.82	8.93	11.3	14.2	17	13

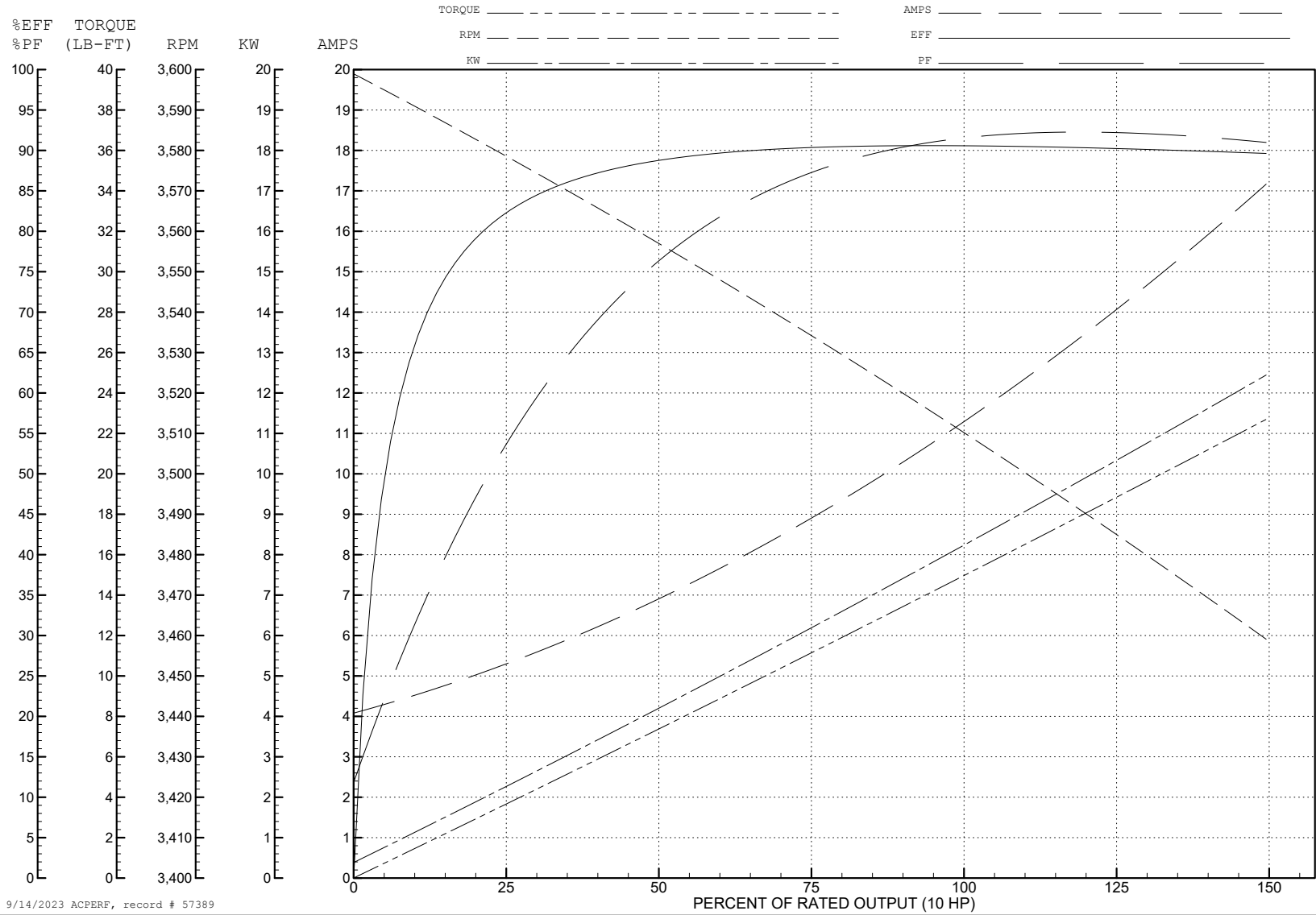
ABB Motors and Mechanical Inc.

WINDING # 37WGS137

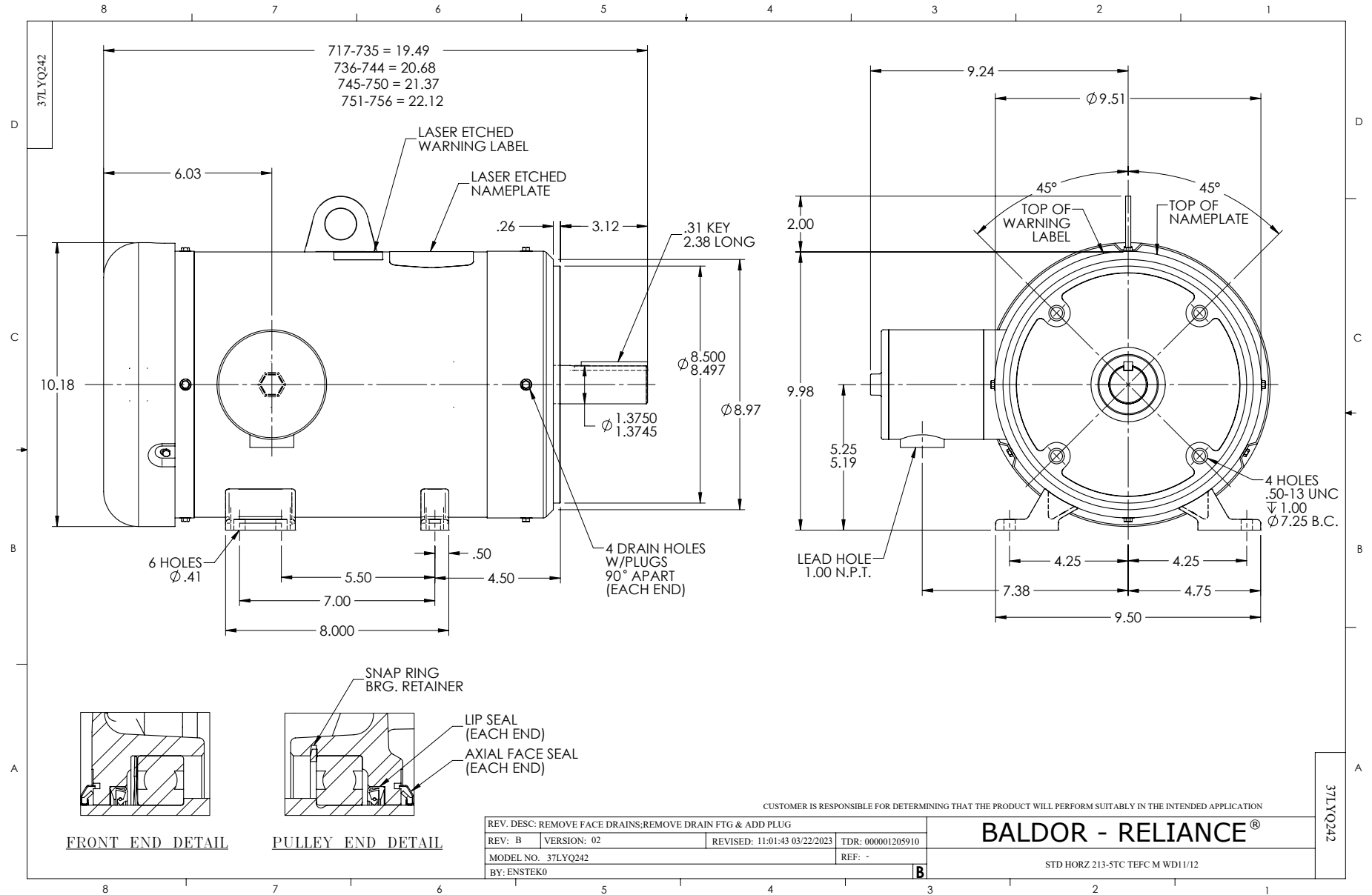
Typical performance - not guaranteed values.

10 HP 3 PH 60 HZ 3500 RPM 460 V 3744M

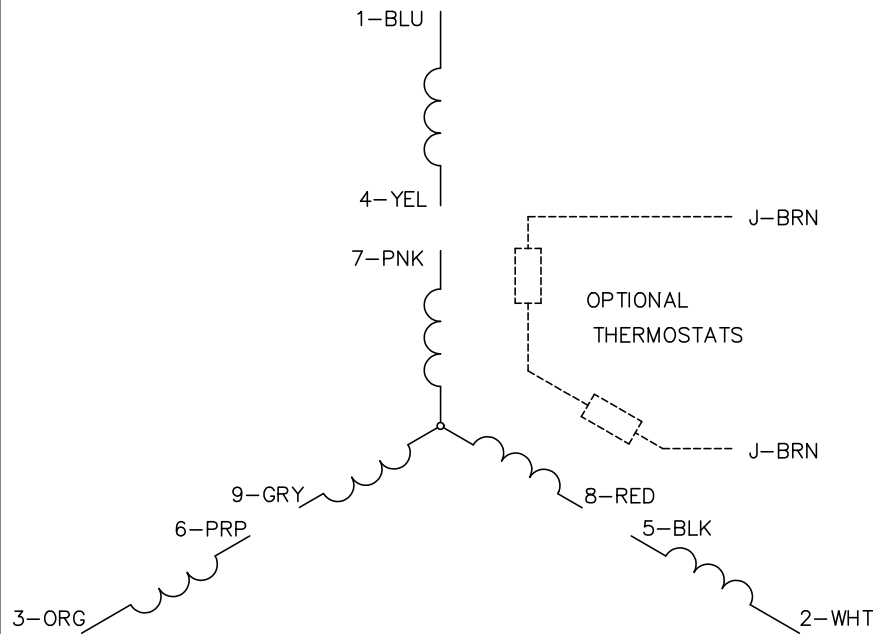
TORQUES (LB-FT): PO=89.4 PU=39 LR=46.5 LRA=124



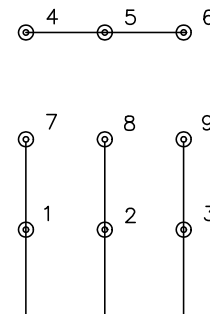
9/14/2023 ACPERF, record # 57389



CD0005



LOW VOLTAGE
(2Y)



LINE

HIGH VOLTAGE
(1Y)



LINE

NOTES:

1. INTERCHANGE ANY TWO LINE LEADS TO REVERSE ROTATION.
2. OPTIONAL THERMOSTATS ARE PROVIDED WHEN SPECIFIED.
3. ACTUAL NUMBER OF INTERNAL PARALLEL CIRCUITS MAY BE A MULTIPLE OF THOSE SHOWN ABOVE.
4. LEAD COLORS ARE OPTIONAL. LEADS MUST ALWAYS BE NUMBERED AS SHOWN.

REV. DESC: REVISE TO SHOW OPTIONAL COLORS			
REV. LTR: E	BY: JLP	REVISED: 01/19/99 10:15	TDR: 0171435
S00000		FILE: AAA00005140	MDL: -
		MTL: -	

BALDOR ELECTRIC Co.

3PH, DV, 9 LEADS

CD0005