



Customer information packet

EM3660T

3HP, 3470RPM, 3PH, 60HZ, 182T, 0618M, TEFC, F1

Class - None

Division - Not Applicable

Specifications

Enclosure	TEFC
Frame	182T
Frame Material	Iron
Frequency	60.00 Hz
Motor Letter Type	Three Phase
Output @ Frequency	3.000 HP @ 60 HZ
Phase	3
Synchronous Speed @ Frequency	3600 RPM @ 60 HZ
Voltage @ Frequency	230.0 V @ 60 HZ 460.0 V @ 60 HZ
XP Class and Group	None
XP Division	Not Applicable
Agency Approvals	CURUSEEV NEMA PREMIUM
Ambient Temperature	40 °C
Auxillary Box	No Auxillary Box
Auxillary Box Lead Termination	None
Base Indicator	Rigid
Bearing Grease Type	Polyrex EM (-20F +300F)
Blower	None
Current @ Voltage	3.700 A @ 460.0 V 7.400 A @ 230.0 V 7.800 A @ 208.0 V
Design Code	B
Drip Cover	No Drip Cover
Duty Rating	CONT
Efficiency @ 100% Load	86.5 %
Electrically Isolated Bearing	Not Electrically Isolated
Feedback Device	NO FEEDBACK
Front Shaft Indicator	None
Heater Indicator	No Heater
High Voltage Full Load Amps	3.7 a

Part detail

Revision	A
Type	AC
Mech. spec.	06C101
Base	
Status	PRD/A
Elec. spec.	06WGY620
Layout	06LYC101
Eff. date	06-28-2023
CD Diagram	CD0005
Poles	02
Leads	9#16
Proprietary	False
Created date	12-17-2020

Insulation Class	F
Inverter Code	Inverter Ready
KVA Code	J
Lifting Lugs	Standard Lifting Lugs
Locked Bearing Indicator	No Locked Bearing
Motor Lead Quantity/Wire Size	9 @ 16 AWG
Motor Lead Termination	Flying Leads
Motor Standards	NEMA
Motor Type	0618M
Mounting Arrangement	F1
Number of Poles	2
Overall Length	15.24 IN
Power Factor	87
Product Family	General Purpose
Pulley End Bearing Type	Ball
Pulley Face Code	Standard
Pulley Shaft Indicator	Standard
Rodent Screen	None
RoHS Status	ROHS COMPLIANT
Service Factor	1.15
Shaft Diameter	1.125 IN
Shaft Ground Indicator	No Shaft Grounding
Shaft Rotation	Reversible
Shaft Slinger Indicator	No Slinger
Speed	3470 rpm
Speed Code	Single Speed
Starting Method	Direct on line
Thermal Device - Bearing	None
Thermal Device - Winding	None
Vibration Sensor Indicator	No Vibration Sensor
Winding Thermal 1	None
Winding Thermal 2	None

Nameplate

NP1259L									
CAT.NO.	EM3660T								
SPEC.	06C101Y620G1								
HP	3								
VOLTS	230/460								
AMP	7.4/3.7								
RPM	3470								
FRAME	182T		HZ	60		PH	3		
SER.F.	1.15	CODE	J	DES	B	CL	F		
NEMA-NOM-EFF	86.5	PF	87						
RATING	40C AMB-CONT								
CC	010A								
DE	6206	ODE	6205						
ENCL	TEFC	SN							

Accessories

Part number	Description	Multiplier
36-1749	C FACE KIT	A8

AC Induction Motor Performance Data

Record # 85919

Preliminary Data Sheet

Winding: 06WGY620-R001		Type: 0618M	Enclosure: TEFC	
Nameplate Data			460 V, 60 Hz: High Voltage Connection	
Rated Output (HP)	3	Full Load Torque	4.54 LB-FT	
Volts	230/460	Start Configuration	direct on line	
Full Load Amps	7.4/3.7	Breakdown Torque	23.1 LB-FT	
R.P.M.	3470	Pull-up Torque	9.16 LB-FT	
Hz	60 Phase	Locked-rotor Torque	12.7 LB-FT	
NEMA Design Code	B KVA Code	Starting Current	29.1 A	
Service Factor (S.F.)	1.15	No-load Current	1.66 A	
NEMA Nom. Eff.	86.5 Power Factor	Line-line Res. @ 25°C	6.35 Ω	
Rating - Duty	40C AMB-CONT	Temp. Rise @ Rated Load	50°C	
S.F. Amps	20/10	Temp. Rise @ S.F. Load	66°C	
		Locked-rotor Power Factor	67.5	
		Rotor inertia	0.0795 lb-ft ²	

Load Characteristics 460 V, 60 Hz, 3 HP

% of Rated Load	25	50	75	100	125	150	S.F.
Power Factor	47	70	82	87	90	91	89
Efficiency	80.2	86.4	87.5	86.7	85.3	83.2	85.9
Speed	3568	3538	3506	3469	3429	3386	3446
Line amperes	1.83	2.3	2.93	3.69	4.55	5.51	4.19

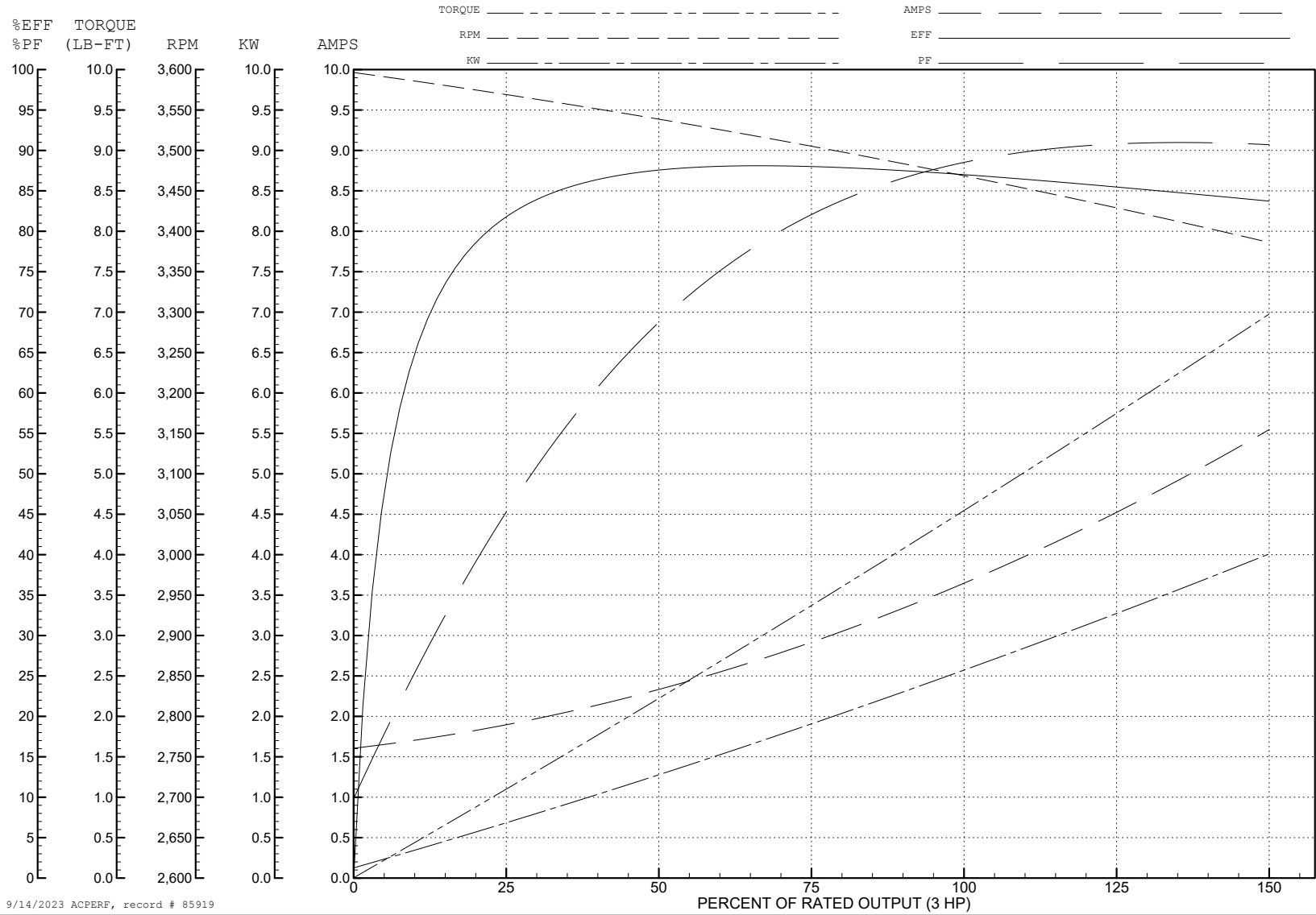
ABB Motors and Mechanical Inc.

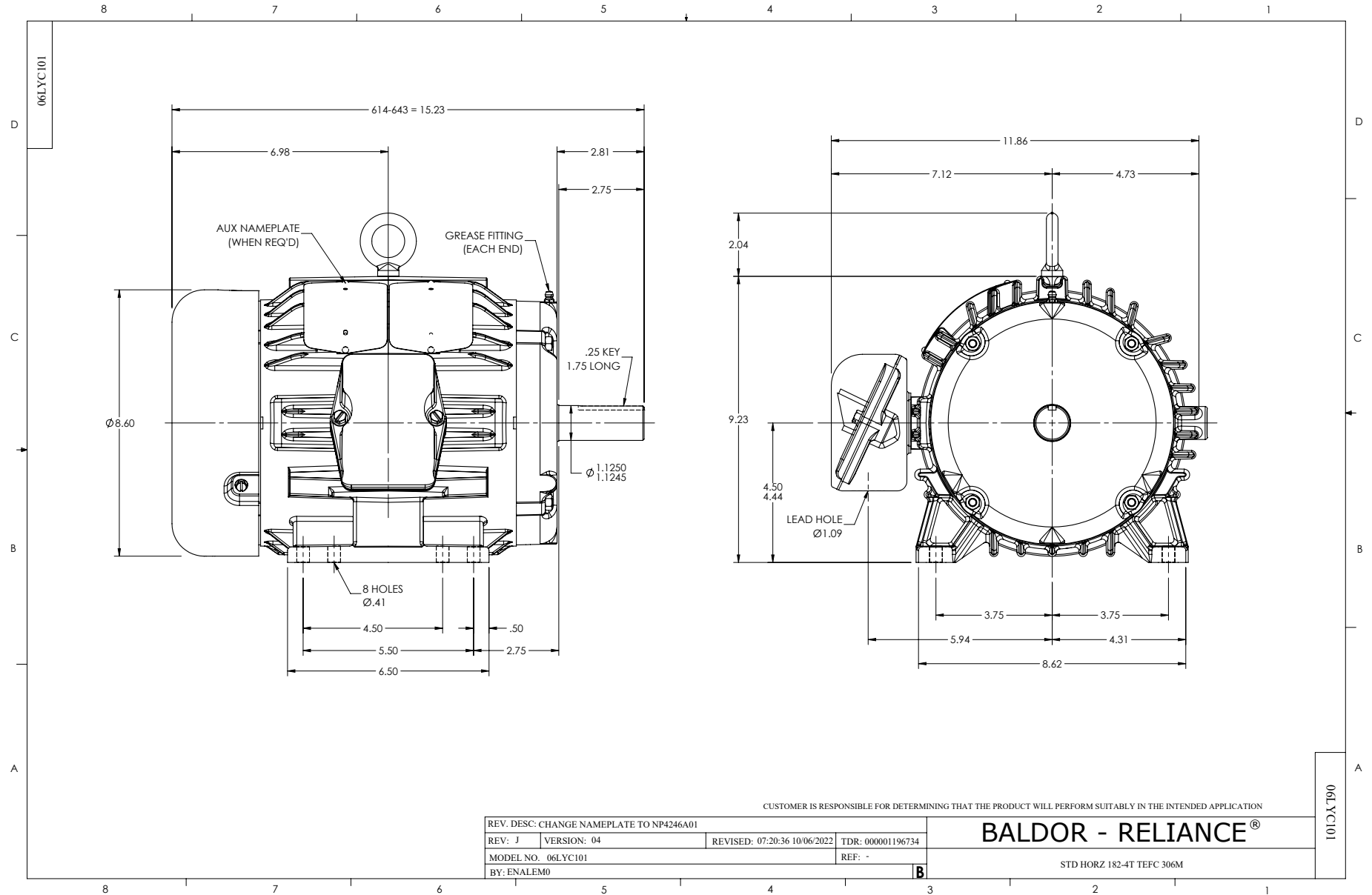
WINDING # 06WGY620

3 HP 3 PH 60 HZ 3470 RPM 460 V 0618M

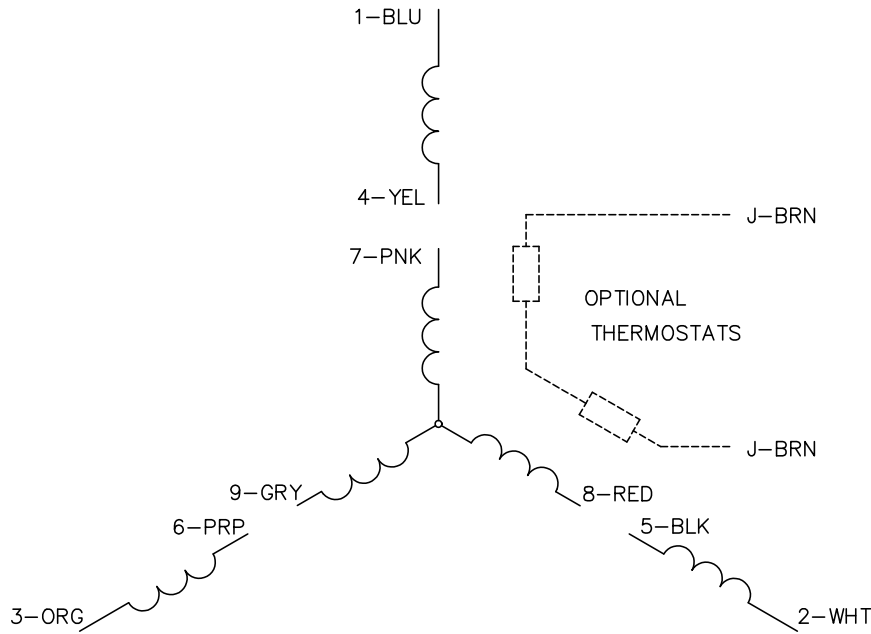
Typical performance - not guaranteed values.

TORQUES (LB-FT): PO=23.1 PU=9.16 LR=12.7 LRA=29.1

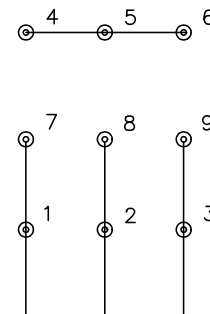




CD0005

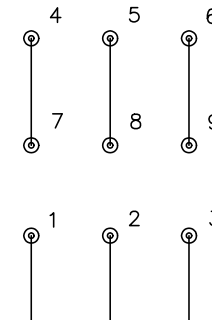


LOW VOLTAGE
(2Y)



LINE

HIGH VOLTAGE
(1Y)



LINE

NOTES:

1. INTERCHANGE ANY TWO LINE LEADS TO REVERSE ROTATION.
2. OPTIONAL THERMOSTATS ARE PROVIDED WHEN SPECIFIED.
3. ACTUAL NUMBER OF INTERNAL PARALLEL CIRCUITS MAY BE A MULTIPLE OF THOSE SHOWN ABOVE.
4. LEAD COLORS ARE OPTIONAL. LEADS MUST ALWAYS BE NUMBERED AS SHOWN.

CD0005

REV. DESC: REVISE TO SHOW OPTIONAL COLORS			
REV. LTR: E	BY: JLP	REVISED: 01/19/99 10:15	TDR: 0171435
S00000		FILE: AAA00005140	MDL: -
		MTL: -	

BALDOR ELECTRIC Co.

3PH, DV, 9 LEADS