

BALDOR® • RELIANCE™

Customer information packet

IDCSWDM3538

.5HP, 1770RPM, 3PH, 60HZ, 56C, 3512M, TENV, F1

Class - None

Division - Not Applicable

Specifications

| | |
|--------------------------------|--|
| Enclosure | TENV |
| Frame | 56C |
| Frame Material | Stainless Steel |
| Frequency | 60.00 Hz |
| Motor Letter Type | Three Phase |
| Output @ Frequency | .500 HP @ 60 HZ |
| Phase | 3 |
| Synchronous Speed @ Frequency | 1800 RPM @ 60 HZ |
| Voltage @ Frequency | 208.0 V @ 60 HZ 230.0 V @ 60 HZ 460.0 V @ 60 HZ |
| XP Class and Group | None |
| XP Division | Not Applicable |
| Agency Approvals | CSA UR |
| Ambient Temperature | 40 °C |
| Auxillary Box | No Auxillary Box |
| Auxillary Box Lead Termination | None |
| Base Indicator | Rigid |
| Bearing Grease Type | Polyrex EM (-20F +300F) |
| Blower | None |
| Current @ Voltage | 1.900 A @ 208.0 V 1.800 A @ 230.0 V .900 A @ 460.0 V |
| Design Code | B |
| Drip Cover | No Drip Cover |
| Duty Rating | CONT |
| Efficiency @ 100% Load | 78.2 % |
| Electrically Isolated Bearing | Not Electrically Isolated |
| Feedback Device | NO FEEDBACK |
| Front Shaft Indicator | None |
| Heater Indicator | No Heater |

Part detail

| | |
|--------------|------------|
| Revision | C |
| Type | AC |
| Mech. spec. | 35S638 |
| Base | |
| Status | PRD/A |
| Elec. spec. | 35WGG155 |
| Layout | 35LYS638 |
| Eff. date | 04-12-2023 |
| CD Diagram | CD0005 |
| Poles | 04 |
| Leads | 9#18 |
| Proprietary | False |
| Created date | 03-11-2022 |

| | |
|-------------------------------|----------------------------|
| High Voltage Full Load Amps | 0.9 a |
| Insulation Class | H |
| Inverter Code | Not Inverter |
| KVA Code | M |
| Lifting Lugs | No Lifting Lugs |
| Locked Bearing Indicator | Locked Bearing |
| Max Speed | 6000 rpm |
| Motor Lead Quantity/Wire Size | 9 @ 18 AWG |
| Motor Lead Termination | Flying Leads |
| Motor Standards | NEMA |
| Motor Type | 3512M |
| Mounting Arrangement | F1 |
| Number of Poles | 4 |
| Overall Length | 11.06 IN |
| Power Factor | 62 |
| Product Family | Wash Down Paint Free |
| Pulley End Bearing Type | Sealed Bearing |
| Pulley Face Code | C-Face |
| Pulley Shaft Indicator | Standard |
| Rodent Screen | None |
| Service Factor | 1.00 |
| Shaft Diameter | 0.625 IN |
| Shaft Ground Indicator | No Shaft Grounding |
| Shaft Rotation | Reversible |
| Shaft Slinger Indicator | No Slinger |
| Speed | 1770 rpm |
| Speed Code | Single Speed |
| Starting Method | Direct on line |
| Thermal Device - Bearing | None |
| Thermal Device - Winding | Normally Closed Thermostat |
| Vibration Sensor Indicator | No Vibration Sensor |
| Winding Thermal 1 | None |
| Winding Thermal 2 | None |

Nameplate

| NP1608L | | | | | |
|---------------------|---------------|----------------|------------|--------------|---|
| CAT NO | IDCSWDM3538 | | | | |
| SPEC. | 35S638G155G1 | | | | |
| FRAME | 56C | HP | .5 TE | | |
| VOLTS | 208-230/460 | | | | |
| MAG CUR | 1.34-1.58/.79 | FLA | 1.9-1.8/.9 | | |
| RPM | 1770 | RPM MAX | 6000 | | |
| HZ | 60 | PH | 3 | CLASS | H |
| SER.F. | 1.00 | DES | B | SL HZ | 1 |
| NEMA-NOM-EFF | 78.2 | WK2 | 0.087 | | |
| BLWR V | PH | 56HZ | HZ | A | |
| RATING | 40C AMB-CONT | | | | |
| DE BRG | 6205 | ODE BRG | 6203 | | |
| CC | SN | | | | |

AC Induction Motor Performance Data

Record # 87454

Typical performance - not guaranteed values

| Winding: 35WGG155-R024 | | Type: 3512M | Enclosure: TENV | |
|------------------------|-----------------|---------------------|--|---------------------------|
| Nameplate Data | | | 460 V, 60 Hz: High Voltage Connection | |
| Rated Output (HP) | .5 | Full Load Torque | 1.49 LB-FT | |
| Volts | 208-230/460 | Start Configuration | direct on line | |
| Full Load Amps | 1.9-1.8/.9 | Breakdown Torque | 6.28 LB-FT | |
| R.P.M. | 1770 | Pull-up Torque | 3.26 LB-FT | |
| Hz | 60 Phase | 3 | Locked-rotor Torque | 4.04 LB-FT |
| NEMA Design Code | B KVA Code | M | Starting Current | 6.71 A |
| Service Factor (S.F.) | | 1 | No-load Current | 0.792 A |
| NEMA Nom. Eff. | 80 Power Factor | 65 | Line-line Res. @ 25°C | 43.2 Ω |
| Rating - Duty | 40C AMB-CONT | | Temp. Rise @ Rated Load | 58°C |
| | | | Locked-rotor Power Factor | 70.8 |
| | | | Rotor inertia | 0.0866 lb-ft ² |

Load Characteristics 460 V, 60 Hz, 0.5 HP

| % of Rated Load | 25 | 50 | 75 | 100 | 125 | 150 |
|-----------------|-------|-------|-------|-------|------|------|
| Power Factor | 27 | 41 | 52 | 62 | 69 | 75 |
| Efficiency | 56.5 | 70.7 | 76.5 | 78.9 | 80 | 80 |
| Speed | 1792 | 1786 | 1779 | 1771 | 1763 | 1755 |
| Line amperes | 0.795 | 0.827 | 0.889 | 0.966 | 1.06 | 1.18 |

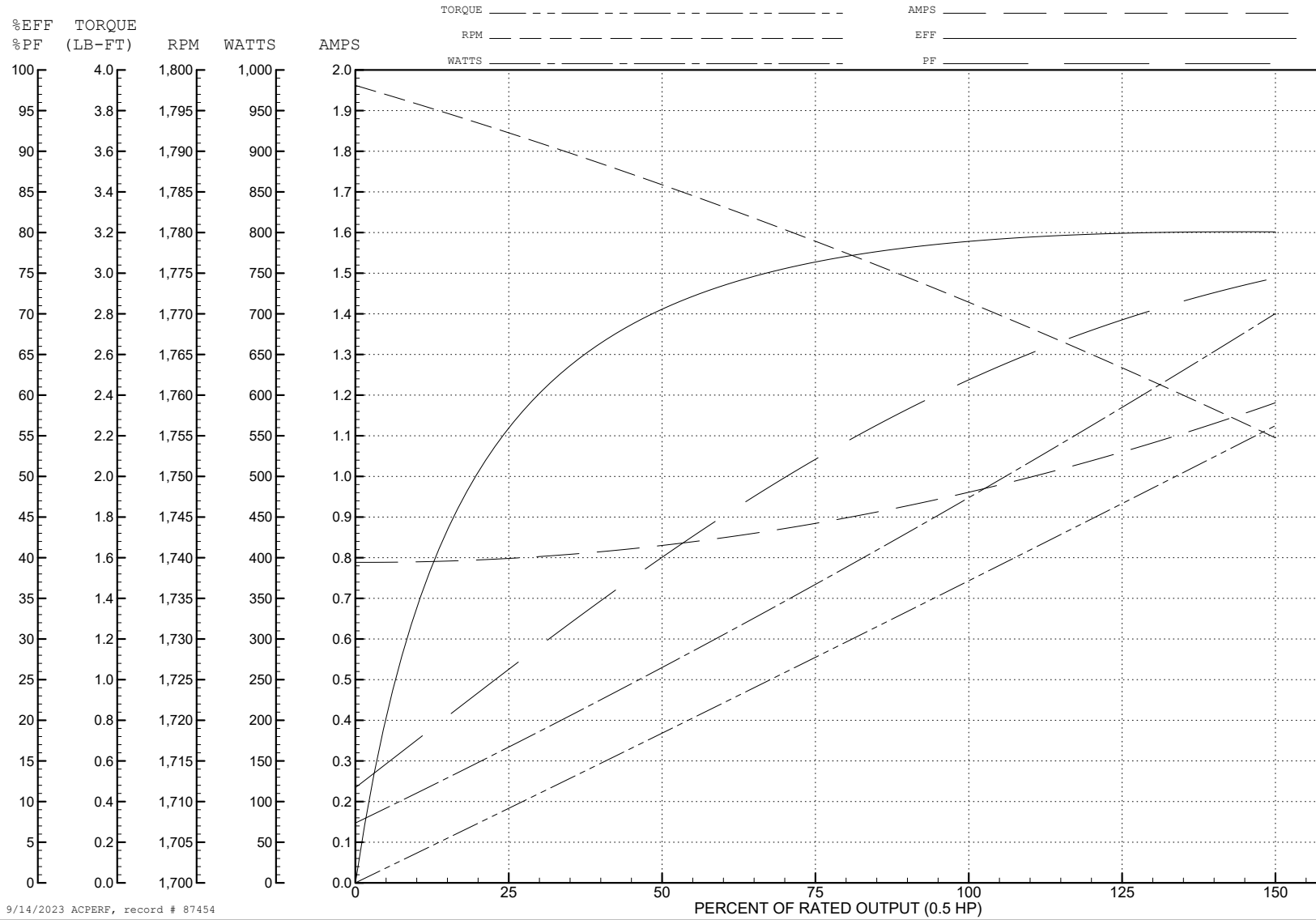
ABB Motors and Mechanical Inc.

WINDING # 35WGG155

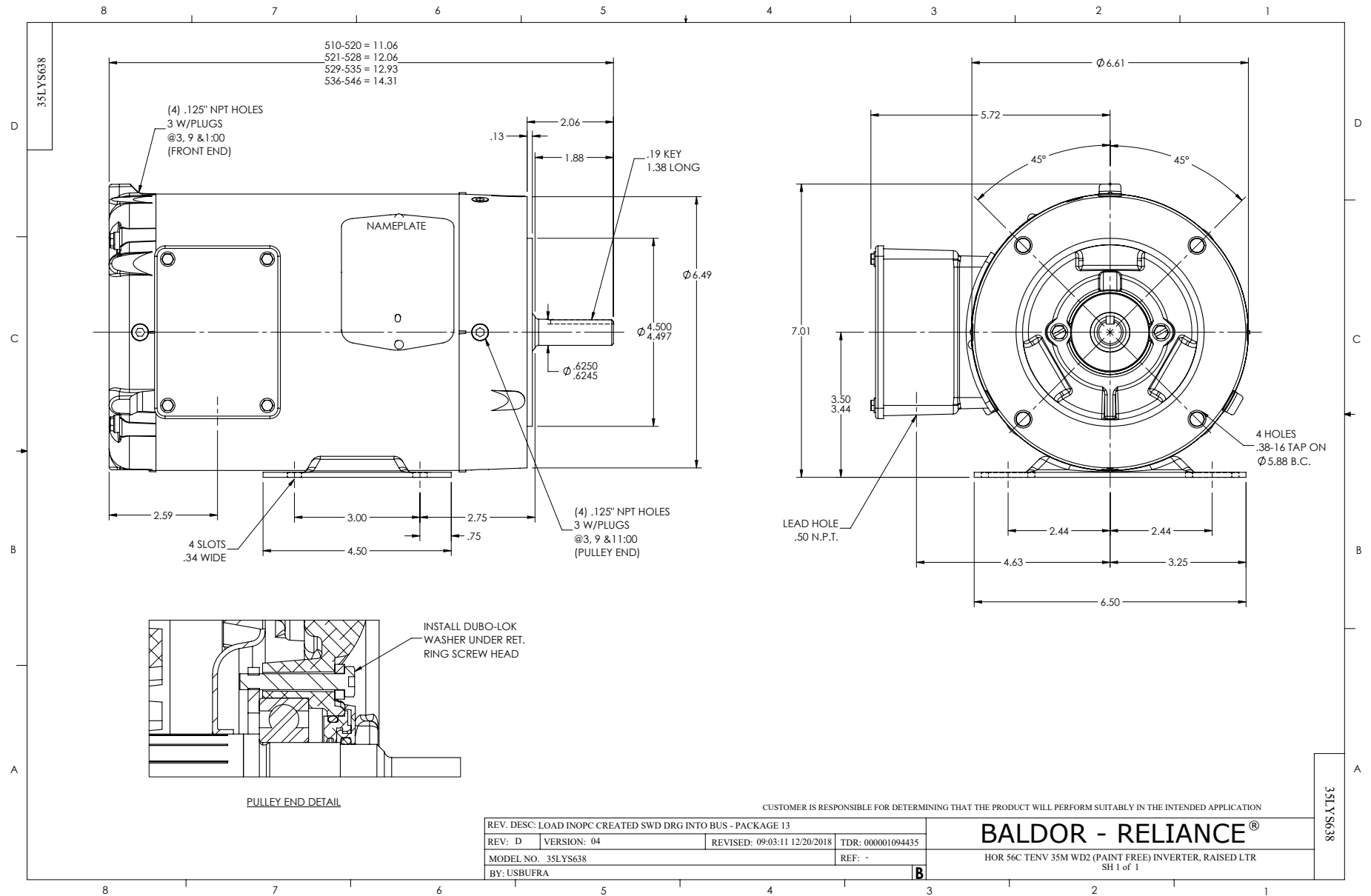
Typical performance - not guaranteed values.

0.5 HP 3 PH 60 HZ 1770 RPM 460 V 3512M

TORQUES (LB-FT): PO=6.28 PU=3.26 LR=4.04 LRA=6.71



9/14/2023 ACPERF, record # 87454



CD0005

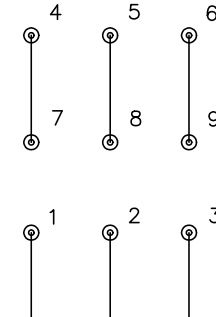


LOW VOLTAGE
(2Y)



LINE

HIGH VOLTAGE
(1Y)



LINE

NOTES:

1. INTERCHANGE ANY TWO LINE LEADS TO REVERSE ROTATION.
2. OPTIONAL THERMOSTATS ARE PROVIDED WHEN SPECIFIED.
3. ACTUAL NUMBER OF INTERNAL PARALLEL CIRCUITS MAY BE A MULTIPLE OF THOSE SHOWN ABOVE.
4. LEAD COLORS ARE OPTIONAL. LEADS MUST ALWAYS BE NUMBERED AS SHOWN.

CD0005

| | | | |
|---|---------|-------------------------|--------------|
| REV. DESC: REVISE TO SHOW OPTIONAL COLORS | | | |
| REV. LTR: E | BY: JLP | REVISED: 01/19/99 10:15 | TDR: 0171435 |
| S00000 | | FILE: AAA00005140 | MDL: - |
| | | MTL: - | |

BALDOR ELECTRIC Co.

3PH, DV, 9 LEADS