



Customer information packet

IDCSWDM3546

1HP, 1770RPM, 3PH, 60HZ, 56C, 3522M, TENV, F1, N

Class - None

Division - Not Applicable

Specifications

Enclosure	TENV
Frame	56C
Frame Material	Stainless Steel
Frequency	60.00 Hz
Motor Letter Type	Three Phase
Output @ Frequency	1.000 HP @ 60 HZ
Phase	3
Synchronous Speed @ Frequency	1800 RPM @ 60 HZ
Voltage @ Frequency	208.0 V @ 60 HZ 230.0 V @ 60 HZ 460.0 V @ 60 HZ
XP Class and Group	None
XP Division	Not Applicable
Agency Approvals	CSA UR
Ambient Temperature	40 °C
Auxillary Box	No Auxillary Box
Auxillary Box Lead Termination	None
Base Indicator	Rigid
Bearing Grease Type	Polyrex EM (-20F +300F)
Blower	None
Current @ Voltage	3.300 A @ 208.0 V 3.060 A @ 230.0 V 1.530 A @ 460.0 V
Design Code	B
Drip Cover	No Drip Cover
Duty Rating	CONT
Efficiency @ 100% Load	85.5 %
Electrically Isolated Bearing	Not Electrically Isolated
Feedback Device	NO FEEDBACK
Front Shaft Indicator	None
Heater Indicator	No Heater

Part detail

Revision	B
Type	AC
Mech. spec.	35S638
Base	
Status	PRD/A
Elec. spec.	35WGZ818
Layout	35LYS638
Eff. date	01-11-2023
CD Diagram	CD0005
Poles	04
Leads	9#18
Proprietary	False
Created date	01-10-2022

High Voltage Full Load Amps	1.5 a
Insulation Class	H
Inverter Code	Inverter Ready
KVA Code	N
Lifting Lugs	No Lifting Lugs
Locked Bearing Indicator	Locked Bearing
Max Speed	2700 rpm
Motor Lead Quantity/Wire Size	9 @ 18 AWG
Motor Lead Termination	Flying Leads
Motor Standards	NEMA
Motor Type	3522M
Mounting Arrangement	F1
Number of Poles	4
Overall Length	12.06 IN
Power Factor	66
Product Family	Wash Down Paint Free
Pulley End Bearing Type	Sealed Bearing
Pulley Face Code	C-Face
Pulley Shaft Indicator	Standard
Rodent Screen	None
Service Factor	1.00
Shaft Diameter	0.625 IN
Shaft Ground Indicator	No Shaft Grounding
Shaft Rotation	Reversible
Shaft Slinger Indicator	No Slinger
Speed	1770 rpm
Speed Code	Single Speed
Starting Method	Direct on line
Thermal Device - Bearing	None
Thermal Device - Winding	Normally Closed Thermostat
Vibration Sensor Indicator	No Vibration Sensor
Winding Thermal 1	None
Winding Thermal 2	None

Nameplate

NP1608L				
CAT NO	IDCSWDM3546			
SPEC.	35S638Z818G1			
FRAME	56C	HP	1 TE	
VOLTS	208-230/460			
MAG CUR	2.16-2.46/1.23	FLA	3.3-3.06/1.53	
RPM	1770	RPM MAX	2700	
HZ	60	PH	3	CLASS H
SER.F.	1.00	DES	B	SL HZ 1
NEMA-NOM-EFF	85.5	WK2	0.159	
BLWR V	PH	HZ	A	
RATING	40C AMB-CONT			
DE BRG	6205	ODE BRG	6203	
CC	010A	SN		

AC Induction Motor Performance Data

Record # 91333

Typical performance - not guaranteed values

Winding: 35WGZ818-R008		Type: 3522M		Enclosure: TENV	
Nameplate Data			460 V, 60 Hz: High Voltage Connection		
Rated Output (HP)		1	Full Load Torque		2.99 LB-FT
Volts		208-230/460	Start Configuration		direct on line
Full Load Amps		3.3-3.06/1.53	Breakdown Torque		16.6 LB-FT
R.P.M.		1770	Pull-up Torque		7.42 LB-FT
Hz	60 Phase		Locked-rotor Torque		10.32 LB-FT
NEMA Design Code	B KVA Code		Starting Current		16.1 A
Service Factor (S.F.)		1	No-load Current		1.23 A
NEMA Nom. Eff.	85.5 Power Factor		Line-line Res. @ 25°C		14.4 Ω
Rating - Duty		40C AMB-CONT	Temp. Rise @ Rated Load		63°C
			Locked-rotor Power Factor		59.3666
			Rotor inertia		0.159 lb-ft ²

Load Characteristics 460 V, 60 Hz, 1 HP

% of Rated Load	25	50	75	100	125	150
Power Factor	27	43	56	66	73	78
Efficiency	70.8	81.2	84.5	85.9	85.8	85.2
Speed	1793	1786	1781	1773	1766	1758
Line amperes	1.25	1.34	1.49	1.67	1.87	2.12

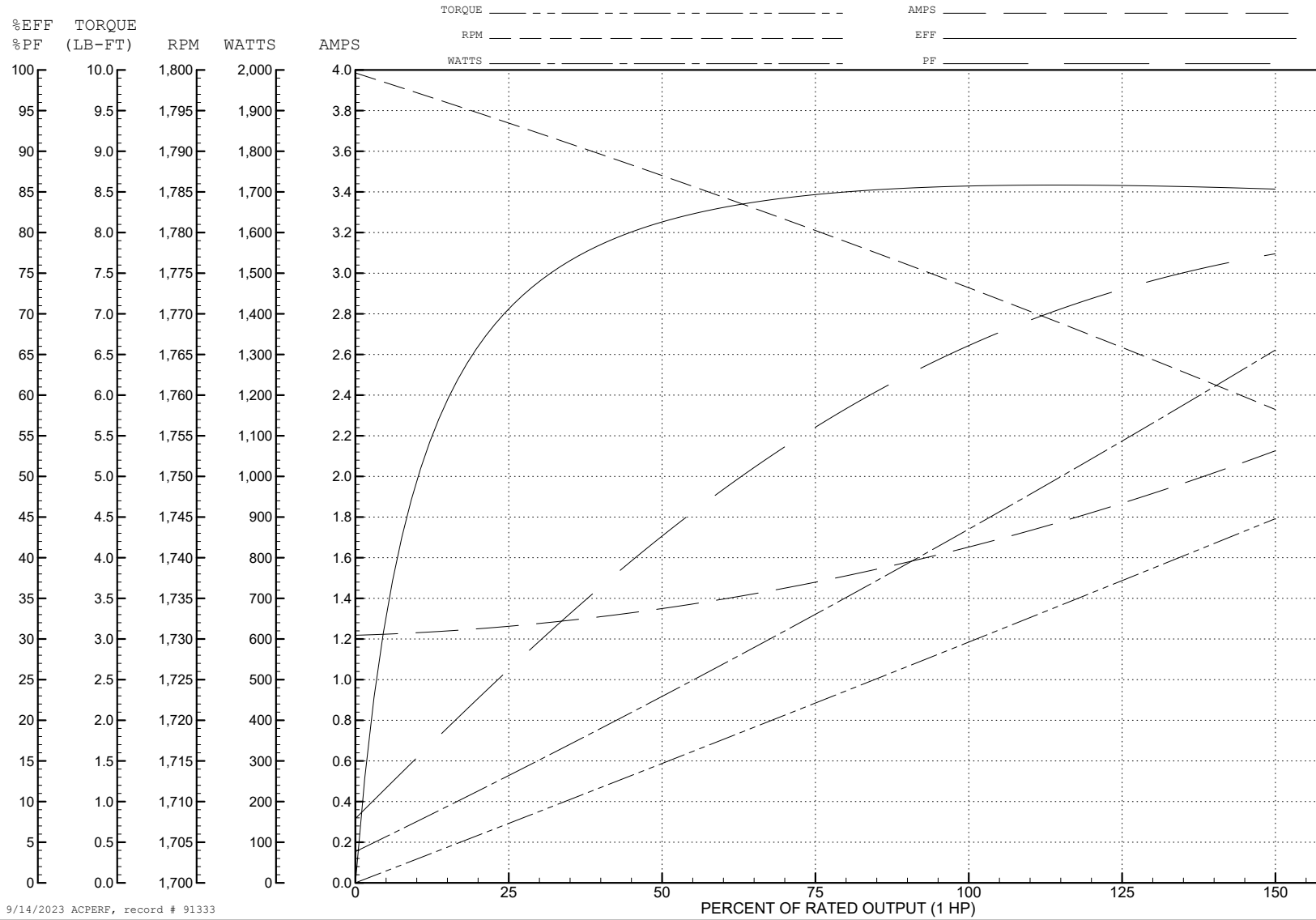
ABB Motors and Mechanical Inc.

WINDING # 35WGZ818

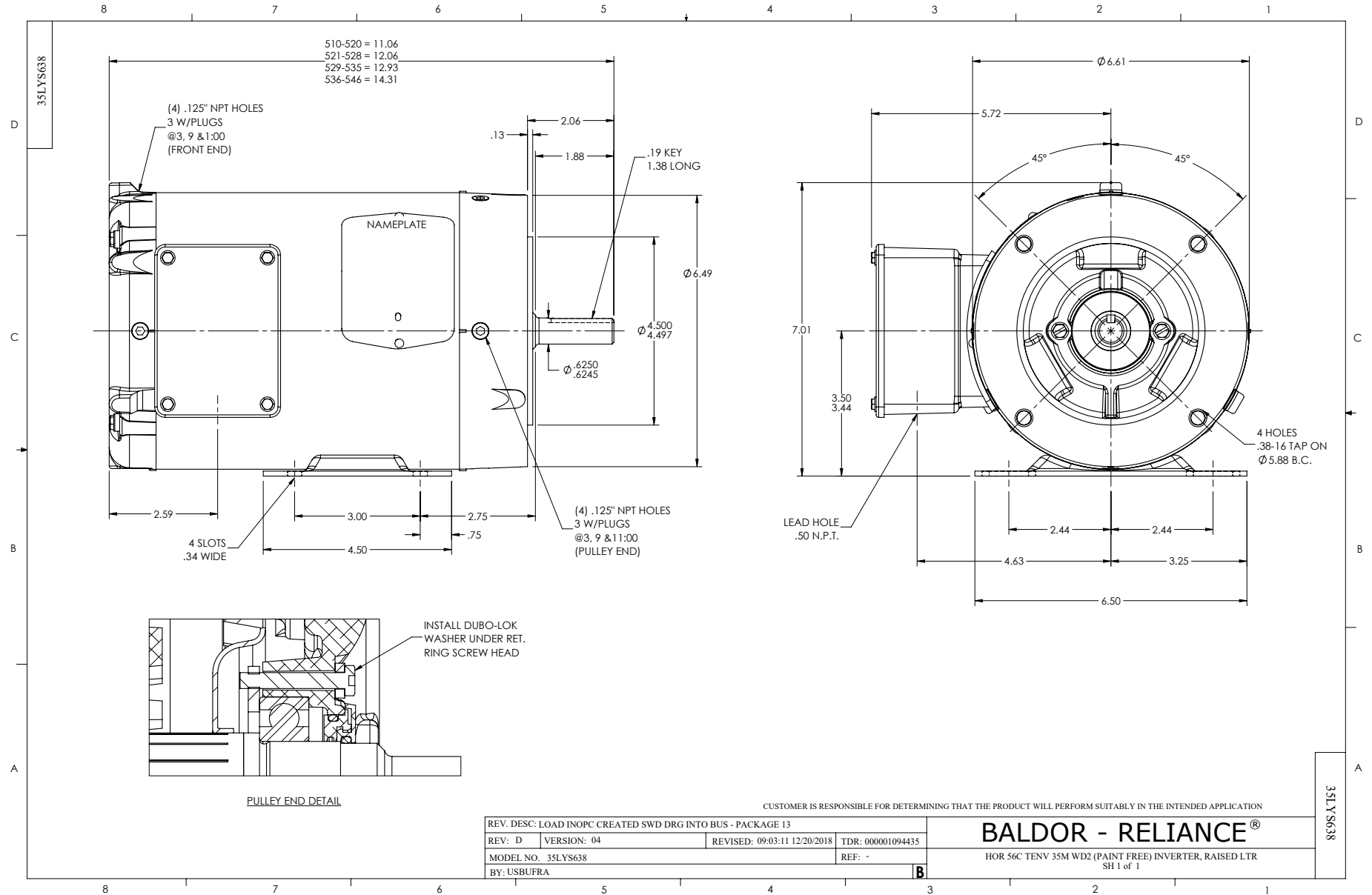
Typical performance - not guaranteed values.

1 HP 3 PH 60 HZ 1770 RPM 460 V 3522M

TORQUES (LB-FT): PO=16.6 PU=7.42 LR=10.32 LRA=16.1



9/14/2023 ACPERF, record # 91333



CD0005



LOW VOLTAGE
(2Y)



LINE

HIGH VOLTAGE
(1Y)



LINE

NOTES:

1. INTERCHANGE ANY TWO LINE LEADS TO REVERSE ROTATION.
2. OPTIONAL THERMOSTATS ARE PROVIDED WHEN SPECIFIED.
3. ACTUAL NUMBER OF INTERNAL PARALLEL CIRCUITS MAY BE A MULTIPLE OF THOSE SHOWN ABOVE.
4. LEAD COLORS ARE OPTIONAL. LEADS MUST ALWAYS BE NUMBERED AS SHOWN.

CD0005

REV. DESC: REVISE TO SHOW OPTIONAL COLORS			
REV. LTR: E	BY: JLP	REVISED: 01/19/99 10:15	TDR: 0171435
S00000		FILE: AAA00005140	MDL: -
		MTL: -	

BALDOR ELECTRIC Co.

3PH, DV, 9 LEADS