



Customer information packet

IDVSWDM3546

1HP, 1770RPM, 3PH, 60HZ, 56C, 3522M, TENV, F1, N

Class - None

Division - Not Applicable

Specifications

Enclosure	TENV
Frame	56C
Frame Material	Stainless Steel
Frequency	60.00 Hz
Motor Letter Type	Three Phase
Output @ Frequency	1.000 HP @ 60 HZ
Phase	3
Synchronous Speed @ Frequency	1800 RPM @ 60 HZ
Voltage @ Frequency	230.0 V @ 60 HZ 460.0 V @ 60 HZ
XP Class and Group	None
XP Division	Not Applicable
Agency Approvals	CSA UR
Ambient Temperature	40 °C
Auxillary Box	No Auxillary Box
Auxillary Box Lead Termination	None
Base Indicator	No Mounting
Bearing Grease Type	Polyrex EM (-20F +300F)
Blower	None
Current @ Voltage	1.670 A @ 460.0 V 3.300 A @ 208.0 V 3.340 A @ 230.0 V
Design Code	B
Drip Cover	No Drip Cover
Duty Rating	CONT
Efficiency @ 100% Load	85.5 %
Electrically Isolated Bearing	Not Electrically Isolated
Feedback Device	NO FEEDBACK
Front Shaft Indicator	None
Heater Indicator	No Heater
High Voltage Full Load Amps	1.7 a

Part detail

Revision	A
Type	AC
Mech. spec.	35S639
Base	
Status	PRD/A
Elec. spec.	35WGZ818
Layout	35LYS639
Eff. date	05-16-2022
CD Diagram	CD0005
Poles	04
Leads	9#18
Proprietary	False
Created date	10-01-2021

Insulation Class	H
Inverter Code	Inverter Ready
KVA Code	M
Lifting Lugs	No Lifting Lugs
Locked Bearing Indicator	Locked Bearing
Max Speed	6000 rpm
Motor Lead Quantity/Wire Size	9 @ 18 AWG
Motor Lead Termination	Flying Leads
Motor Standards	NEMA
Motor Type	3522M
Mounting Arrangement	F1
Number of Poles	4
Overall Length	12.06 IN
Power Factor	66
Product Family	Wash Down Paint Free
Pulley End Bearing Type	Sealed Bearing
Pulley Face Code	C-Face
Pulley Shaft Indicator	Standard
Rodent Screen	None
Service Factor	1.00
Shaft Diameter	0.625 IN
Shaft Ground Indicator	No Shaft Grounding
Shaft Rotation	Reversible
Shaft Slinger Indicator	No Slinger
Speed	1770 rpm
Speed Code	Single Speed
Starting Method	Direct on line
Thermal Device - Bearing	None
Thermal Device - Winding	Normally Closed Thermostat
Vibration Sensor Indicator	No Vibration Sensor
Winding Thermal 1	None
Winding Thermal 2	None

Nameplate

NP1608L				
CAT NO	IDVSWDM3546			
SPEC.	35S639Z818G1			
FRAME	56C	HP	1 TE	
VOLTS	230/460			
MAG CUR	2.5/1.25	FLA	3.34/1.67	
RPM	1770	RPM MAX	6000	
HZ	60	PH	3	CLASS H
SER.F.	1.00	DES	B	SL HZ 1
NEMA-NOM-EFF	85.5	WK2	0.159	
BLWR V		PH		HZ A
RATING	40C AMB-CONT			
DE BRG	6205	ODE BRG	6203	
CC	010A	SN		

AC Induction Motor Performance Data

Record # 89787

Typical performance - not guaranteed values

Winding: 35WGZ818-R005		Type: 3522M		Enclosure: TENV	
Nameplate Data			460 V, 60 Hz: High Voltage Connection		
Rated Output (HP)	1	Full Load Torque	2.99 LB-FT		
Volts	230/460	Start Configuration	direct on line		
Full Load Amps	3.34/1.67	Breakdown Torque	16.6 LB-FT		
R.P.M.	1770	Pull-up Torque	7.42 LB-FT		
Hz	60 Phase	3	Locked-rotor Torque	10.32 LB-FT	
NEMA Design Code	B KVA Code	M	Starting Current	16.1 A	
Service Factor (S.F.)		1	No-load Current	1.23 A	
NEMA Nom. Eff.	85.5 Power Factor	66	Line-line Res. @ 25°C	14.4 Ω	
Rating - Duty	40C AMB-CONT		Temp. Rise @ Rated Load	63°C	
			Locked-rotor Power Factor	59.3666	
			Rotor inertia	0.159 lb-ft ²	

Load Characteristics 460 V, 60 Hz, 1 HP

% of Rated Load	25	50	75	100	125	150
Power Factor	27	43	56	66	73	78
Efficiency	70.8	81.2	84.5	85.9	85.8	85.2
Speed	1793	1786	1781	1773	1766	1758
Line amperes	1.25	1.34	1.49	1.67	1.87	2.12

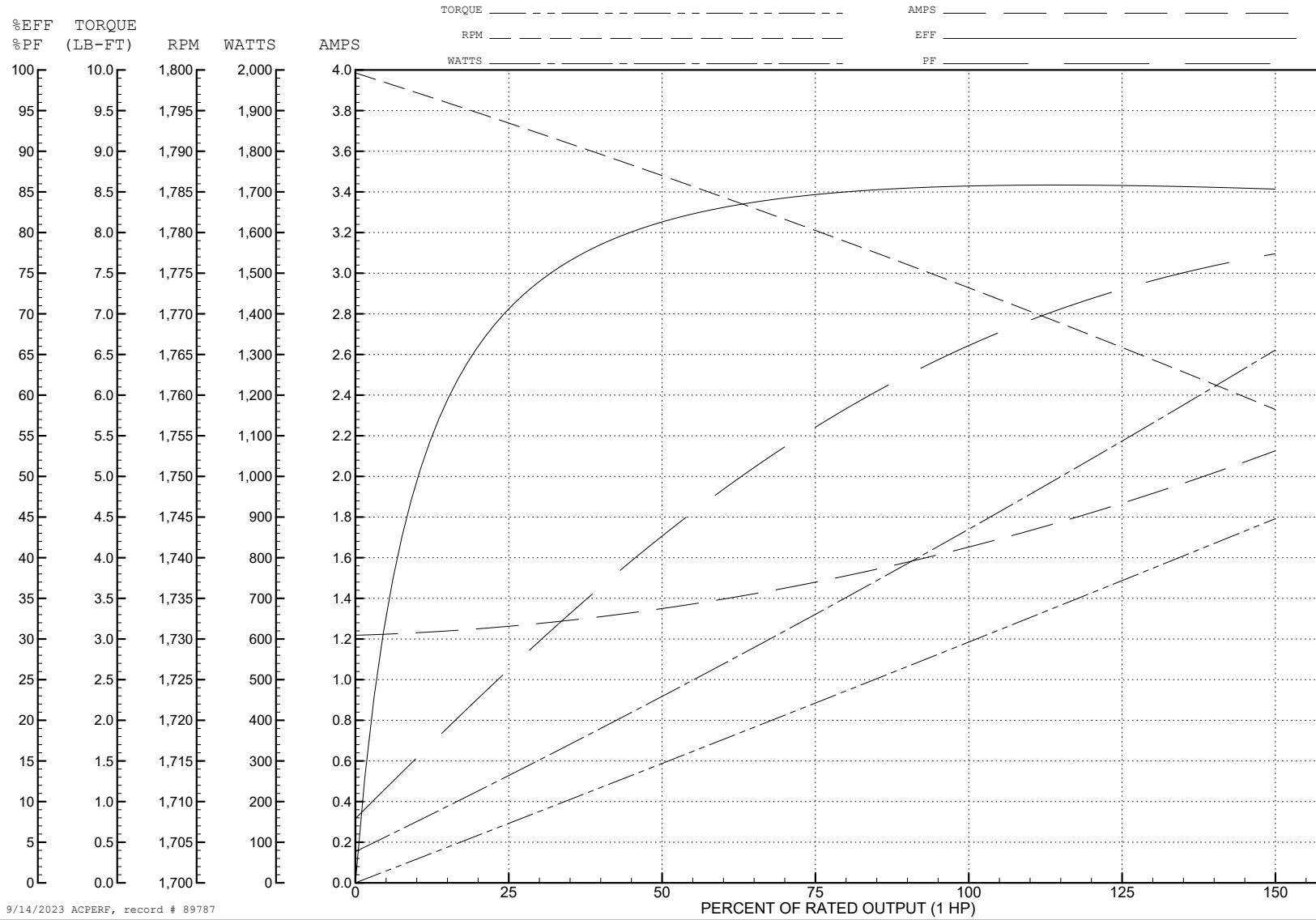
ABB Motors and Mechanical Inc.

WINDING # 35WGZ818

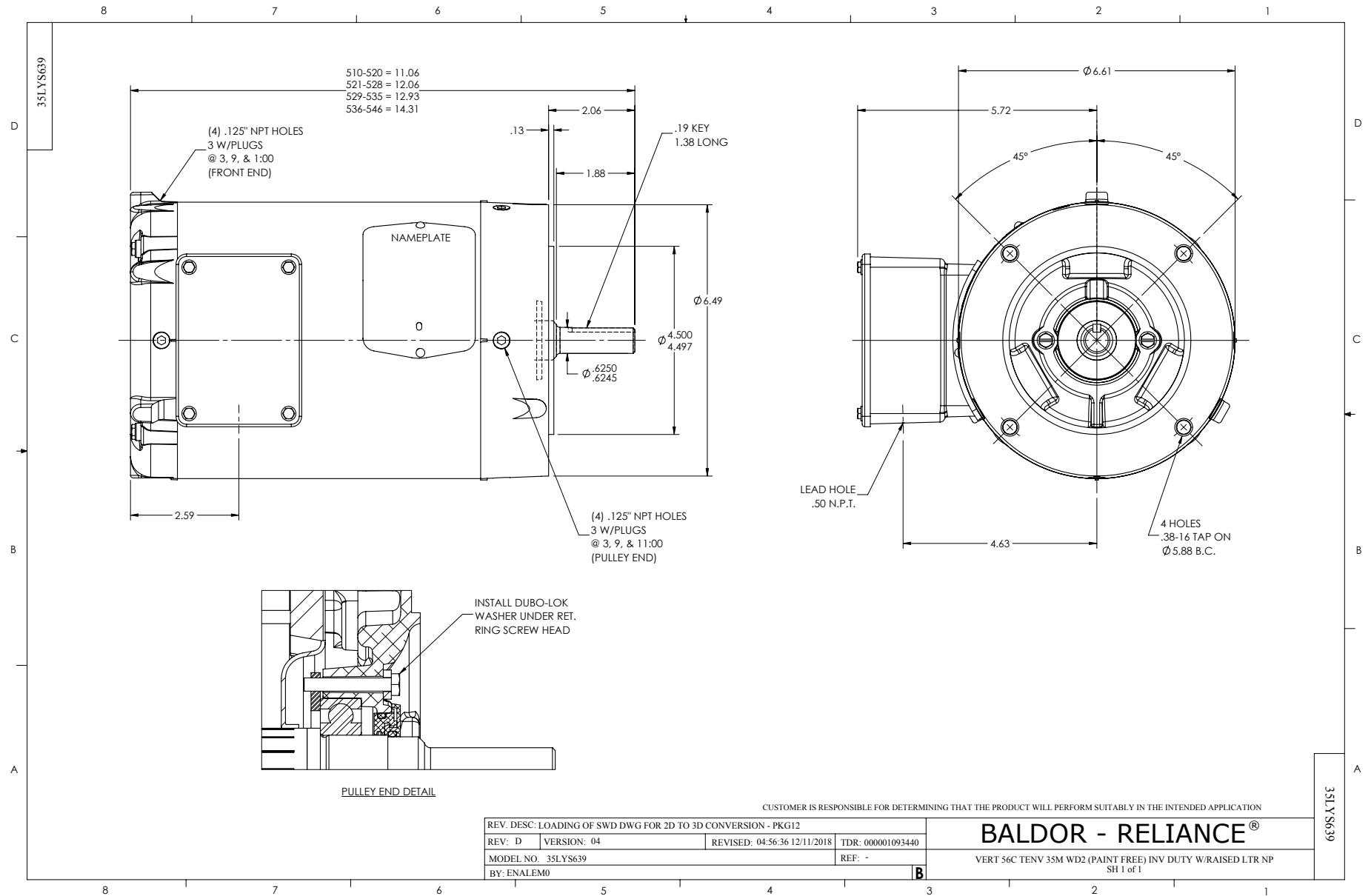
Typical performance - not guaranteed values.

1 HP 3 PH 60 HZ 1770 RPM 460 V 3522M

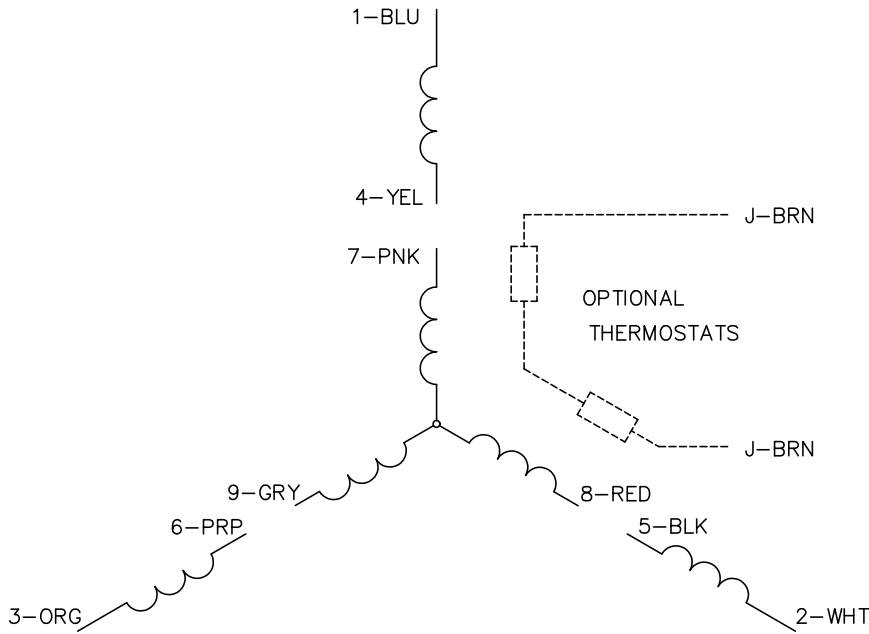
TORQUES (LB-FT): PO=16.6 PU=7.42 LR=10.32 LRA=16.1



9/14/2023 ACPERF, record # 89787



CD0005

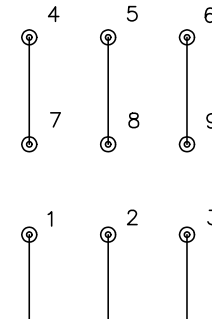


LOW VOLTAGE
(2Y)



LINE

HIGH VOLTAGE
(1Y)



LINE

NOTES:

1. INTERCHANGE ANY TWO LINE LEADS TO REVERSE ROTATION.
2. OPTIONAL THERMOSTATS ARE PROVIDED WHEN SPECIFIED.
3. ACTUAL NUMBER OF INTERNAL PARALLEL CIRCUITS MAY BE A MULTIPLE OF THOSE SHOWN ABOVE.
4. LEAD COLORS ARE OPTIONAL. LEADS MUST ALWAYS BE NUMBERED AS SHOWN.

CD0005

REV. DESC: REVISE TO SHOW OPTIONAL COLORS

REV. LTR: E BY: JLP REVISED: 01/19/99 10:15 TDR: 0171435

500000

FILE: AAA00005140

MDL: -

MTL: -

BALDOR ELECTRIC Co.

3PH, DV, 9 LEADS