



Customer information packet

IDVSWDM3558

2HP, 1750RPM, 3PH, 60HZ, 56C, 3528M, TEFC, F1, N

Class - None

Division - Not Applicable

Specifications

Enclosure	TEFC
Frame	56C
Frame Material	Stainless Steel
Frequency	60.00 Hz
Motor Letter Type	Three Phase
Output @ Frequency	2.000 HP @ 60 HZ
Phase	3
Synchronous Speed @ Frequency	1800 RPM @ 60 HZ
Voltage @ Frequency	230.0 V @ 60 HZ 460.0 V @ 60 HZ
XP Class and Group	None
XP Division	Not Applicable
Agency Approvals	UR CSA
Ambient Temperature	40 °C
Auxillary Box	No Auxillary Box
Auxillary Box Lead Termination	None
Base Indicator	No Mounting
Bearing Grease Type	Polyrex EM (-20F +300F)
Blower	None
Current @ Voltage	2.900 A @ 460.0 V 5.800 A @ 230.0 V
Design Code	B
Drip Cover	No Drip Cover
Duty Rating	CONT
Efficiency @ 100% Load	86.5 %
Electrically Isolated Bearing	Not Electrically Isolated
Feedback Device	NO FEEDBACK
Front Face Code	Standard
Front Shaft Indicator	None
Heater Indicator	No Heater
High Voltage Full Load Amps	2.9 a

Part detail

Revision	V
Type	AC
Mech. spec.	35S640
Base	
Status	PRD/A
Elec. spec.	35WGP562
Layout	35LYS640
Eff. date	06-24-2021
CD Diagram	CD0005
Poles	04
Leads	9#18
Proprietary	False
Created date	08-12-2010

Insulation Class	H
Inverter Code	Not Inverter
KVA Code	L
Lifting Lugs	No Lifting Lugs
Locked Bearing Indicator	Locked Bearing
Max Speed	4500 rpm
Motor Lead Exit	Ko Box
Motor Lead Quantity/Wire Size	9 @ 18 AWG
Motor Lead Termination	Flying Leads
Motor Standards	NEMA
Motor Type	3528M
Mounting Arrangement	F1
Number of Poles	4
Overall Length	13.24 IN
Power Factor	75
Product Family	Wash Down Paint Free
Pulley End Bearing Type	Sealed Bearing
Pulley Face Code	C-Face
Pulley Shaft Indicator	Standard
Rodent Screen	None
Service Factor	1.00
Shaft Diameter	0.625 IN
Shaft Extension Location	Pulley End
Shaft Ground Indicator	No Shaft Grounding
Shaft Rotation	Reversible
Shaft Slinger Indicator	Shaft Slinger
Speed	1750 rpm
Speed Code	Single Speed
Starting Method	Direct on line
Thermal Device - Bearing	None
Thermal Device - Winding	Normally Closed Thermostat
Vibration Sensor Indicator	No Vibration Sensor
Winding Thermal 1	None
Winding Thermal 2	None

Nameplate

NP1608L				
CAT NO	IDVSWDM3558			
SPEC.	35S640P562G1			
FRAME	56C	HP	2 TE	
VOLTS	230/460			
MAG CUR	3.4/1.7	FLA	5.8/2.9	
RPM	1750	RPM MAX	4500	
HZ	60	PH	3	CLASS H
SER.F.	1.00	DES	B	SL HZ 1.7
NEMA-NOM-EFF	86.5	WK2	0.17	
BLWR V	PH	HZ	A	
RATING	40C AMB-CONT			
DE BRG	6205	ODE BRG	6203	
CC	010A	SN		
	INV WDG ISR WIRE			

AC Induction Motor Performance Data

Record # 36548

Typical performance - not guaranteed values

Winding: 35WGP562-R002		Type: 3528M		Enclosure: TEFC	
Nameplate Data			460 V, 60 Hz: High Voltage Connection		
Rated Output (HP)	2	Full Load Torque	6.01 LB-FT		
Volts	230/460	Start Configuration	direct on line		
Full Load Amps	5.8/2.9	Breakdown Torque	24.6 LB-FT		
R.P.M.	1750	Pull-up Torque	12.2 LB-FT		
Hz	60 Phase	3	Locked-rotor Torque	17.9 LB-FT	
NEMA Design Code	B KVA Code	L	Starting Current	23.7 A	
Service Factor (S.F.)		1	No-load Current	1.72 A	
NEMA Nom. Eff.	86.5 Power Factor	75	Line-line Res. @ 25°C	7.66 Ω	
Rating - Duty	40C AMB-CONT		Temp. Rise @ Rated Load	75°C	
S.F. Amps			Temp. Rise @ S.F. Load	90°C	
			Locked-rotor Power Factor	50	
			Rotor inertia	0.165 LB-FT ²	

Load Characteristics 460 V, 60 Hz, 2 HP

% of Rated Load	25	50	75	100	125	150
Power Factor	33	53	67	75	80	84
Efficiency	77.7	85.4	86.9	86.6	85.8	84.2
Speed	1789	1778	1765	1751	1737	1721
Line amperes	1.8	2.04	2.39	2.88	3.39	4.01

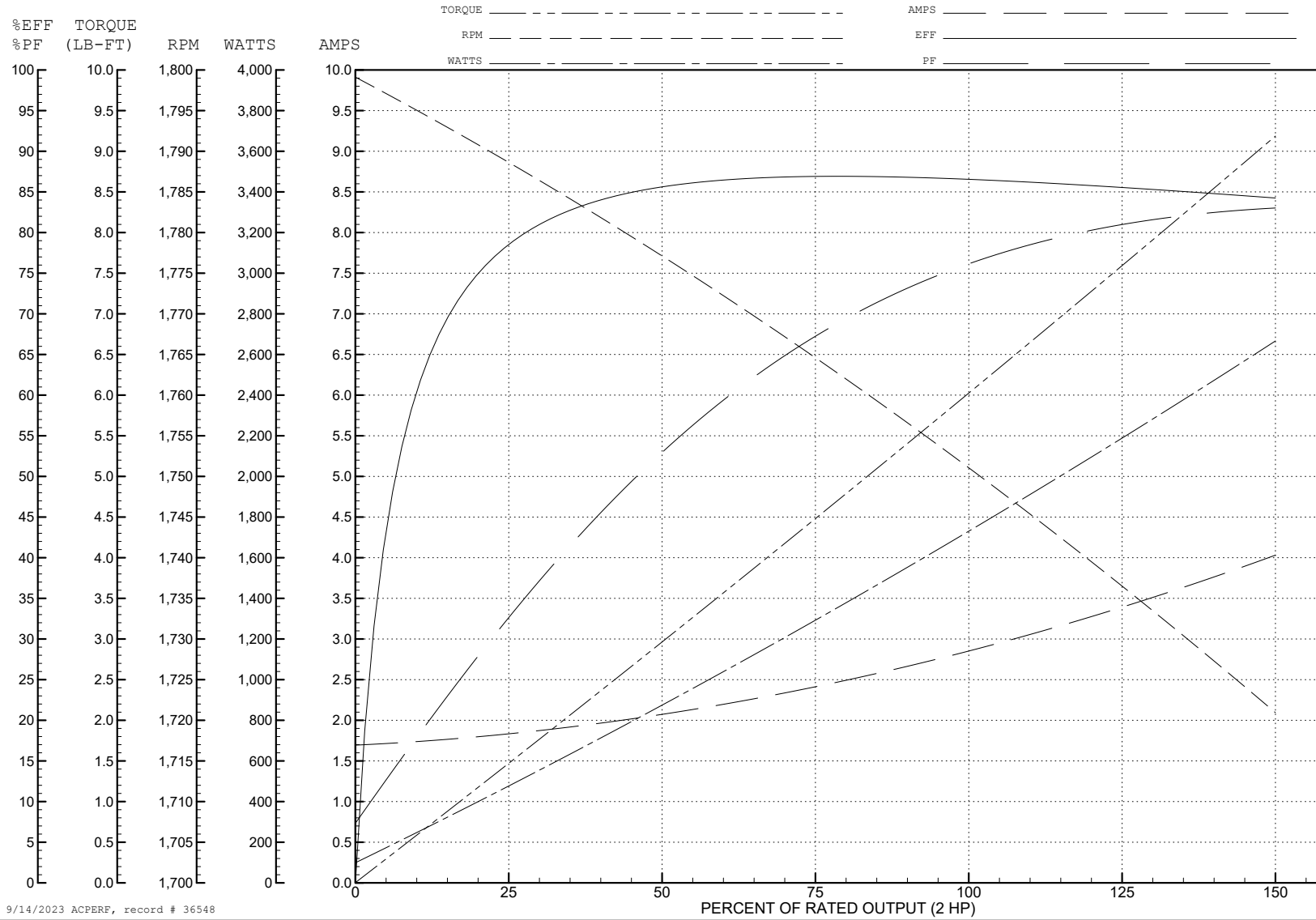
ABB Motors and Mechanical Inc.

WINDING # 35WGP562

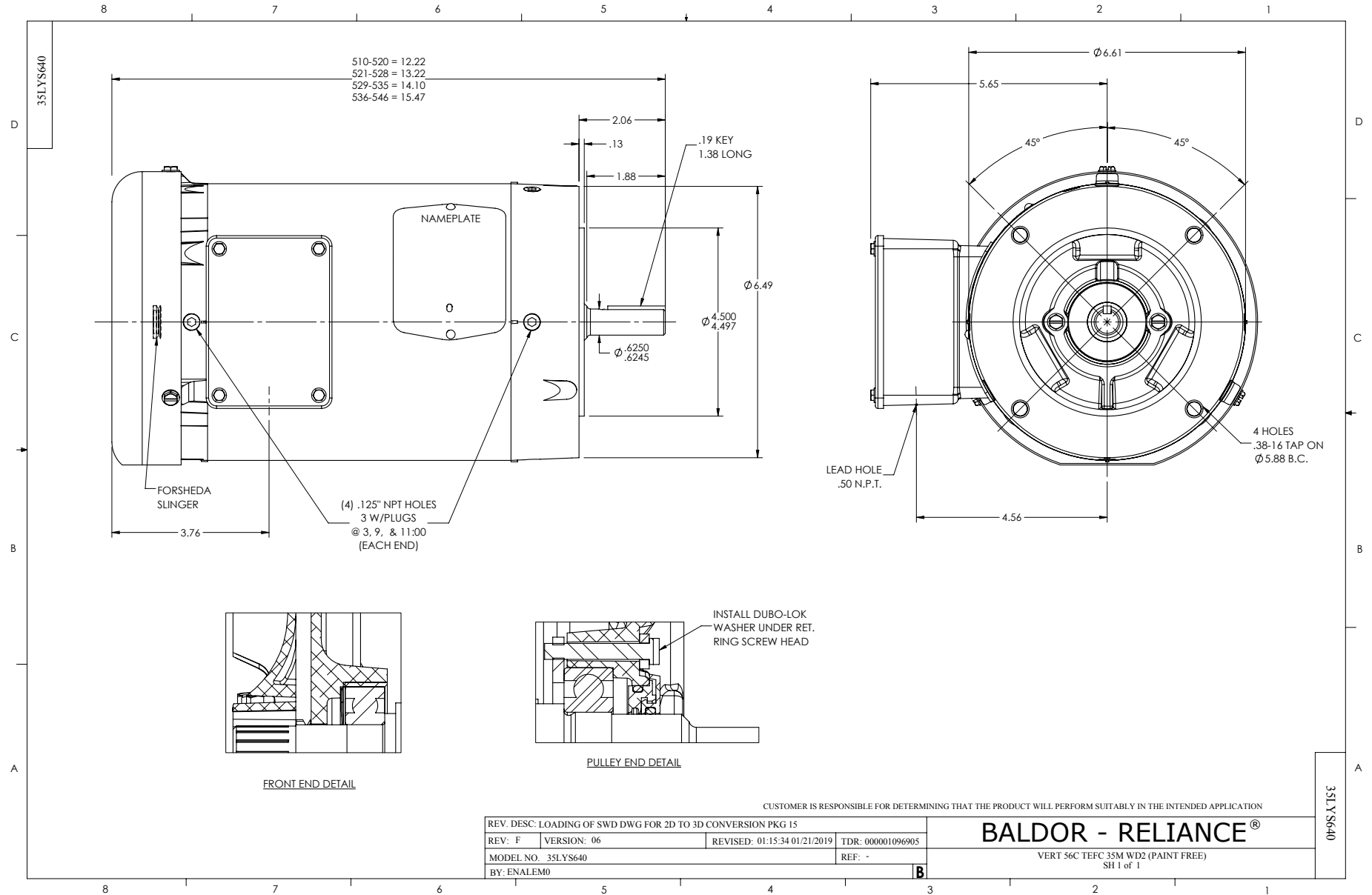
2 HP 3 PH 60 HZ 1750 RPM 460 V 3528M

Typical performance - not guaranteed values.

TORQUES (LB-FT): PO=24.6 PU=12.2 LR=17.9 LRA=23.7



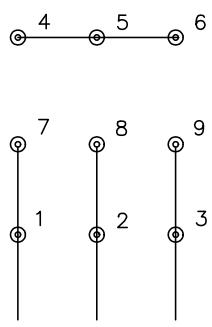
9/14/2023 ACPERF, record # 36548



CD0005

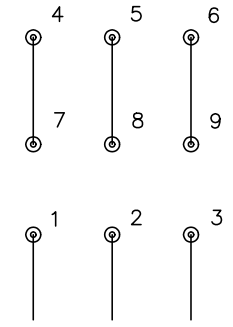


LOW VOLTAGE
(2Y)



LINE

HIGH VOLTAGE
(1Y)



LINE

NOTES:

1. INTERCHANGE ANY TWO LINE LEADS TO REVERSE ROTATION.
2. OPTIONAL THERMOSTATS ARE PROVIDED WHEN SPECIFIED.
3. ACTUAL NUMBER OF INTERNAL PARALLEL CIRCUITS MAY BE A MULTIPLE OF THOSE SHOWN ABOVE.
4. LEAD COLORS ARE OPTIONAL. LEADS MUST ALWAYS BE NUMBERED AS SHOWN.

CD0005

REV. DESC: REVISE TO SHOW OPTIONAL COLORS			
REV. LTR: E	BY: JLP	REVISED: 01/19/99 10:15	TDR: 0171435
S00000		FILE: AAA00005140	MDL: -
		MTL: -	

BALDOR ELECTRIC Co.

3PH, DV, 9 LEADS