



---

# Customer information packet

## IDVSWDM3558T

2HP, 1750RPM, 3PH, 60HZ, 145TC, 3528M, TEFC, F1

Class - None

Division - Not Applicable

## Specifications

Enclosure	TEFC
Frame	145TC
Frame Material	Stainless Steel
Frequency	60.00 Hz
Motor Letter Type	Three Phase
Output @ Frequency	2.000 HP @ 60 HZ
Phase	3
Synchronous Speed @ Frequency	1800 RPM @ 60 HZ
Voltage @ Frequency	230.0 V @ 60 HZ 460.0 V @ 60 HZ
XP Class and Group	None
XP Division	Not Applicable
Agency Approvals	UR CSA
Ambient Temperature	40 °C
Auxillary Box	No Auxillary Box
Auxillary Box Lead Termination	None
Base Indicator	No Mounting
Bearing Grease Type	Polyrex EM (-20F +300F)
Blower	None
Current @ Voltage	2.900 A @ 460.0 V 5.800 A @ 230.0 V
Design Code	B
Drip Cover	No Drip Cover
Duty Rating	CONT
Efficiency @ 100% Load	86.5 %
Electrically Isolated Bearing	Not Electrically Isolated
Feedback Device	NO FEEDBACK
Front Face Code	Standard
Front Shaft Indicator	None
Heater Indicator	No Heater
High Voltage Full Load Amps	2.9 a

## Part detail

Revision	V
Type	AC
Mech. spec.	35SS636
Base	
Status	PRD/A
Elec. spec.	35WGP562
Layout	35LYSS636
Eff. date	08-23-2023
CD Diagram	CD0005
Poles	04
Leads	9#18
Proprietary	False
Created date	12-22-2009

<b>Insulation Class</b>	H
<b>Inverter Code</b>	Inverter Duty
<b>KVA Code</b>	L
<b>Lifting Lugs</b>	No Lifting Lugs
<b>Locked Bearing Indicator</b>	Locked Bearing
<b>Max Speed</b>	4500 rpm
<b>Motor Lead Exit</b>	Ko Box
<b>Motor Lead Quantity/Wire Size</b>	9 @ 18 AWG
<b>Motor Lead Termination</b>	Flying Leads
<b>Motor Standards</b>	NEMA
<b>Motor Type</b>	3528M
<b>Mounting Arrangement</b>	F1
<b>Number of Poles</b>	4
<b>Overall Length</b>	13.29 IN
<b>Power Factor</b>	75
<b>Product Family</b>	Wash Down Paint Free
<b>Pulley End Bearing Type</b>	Sealed Bearing
<b>Pulley Face Code</b>	C-Face
<b>Pulley Shaft Indicator</b>	Standard
<b>Rodent Screen</b>	None
<b>RoHS Status</b>	ROHS NON-COMPLIANT
<b>Service Factor</b>	1.00
<b>Shaft Diameter</b>	0.875 IN
<b>Shaft Extension Location</b>	Pulley End
<b>Shaft Ground Indicator</b>	No Shaft Grounding
<b>Shaft Rotation</b>	Reversible
<b>Shaft Slinger Indicator</b>	Shaft Slinger
<b>Speed</b>	1750 rpm
<b>Speed Code</b>	Single Speed
<b>Starting Method</b>	Direct on line
<b>Thermal Device - Bearing</b>	None
<b>Thermal Device - Winding</b>	Normally Closed Thermostat
<b>Vibration Sensor Indicator</b>	No Vibration Sensor
<b>Winding Thermal 1</b>	None

**Winding Thermal 2**

**None**

---

**Nameplate**

<b>NP3956L</b>			
<b>CAT.NO.</b>	IDVSWDM3558T		
<b>SPEC.</b>	35SS636P562G1		
<b>FRAME</b>	145TC	<b>H.P.</b>	2 TE
<b>VOLTS</b>	230/460		
<b>MAG. CUR.</b>	3.4/1.7	<b>F.L. AMPS</b>	5.8/2.9
<b>R.P.M.</b>	1750	<b>R.P.M. MAX</b>	4500
<b>HZ.</b>	60	<b>PH.</b>	3 <b>CLASS</b> H
<b>SER.F.</b>	1.00	<b>DES.</b>	B <b>SL HZ</b> 1.7
<b>NEMA NOM. EFF.</b>	86.5	<b>WK2</b>	0.17
<b>BLWR V</b>	<b>PH</b>	<b>HZ</b>	<b>AMPS</b>
<b>RATING</b>	40C AMB-CONT		
<b>DE BRG</b>	6205	<b>ODE BRG</b>	6203
<b>CC</b>	010A <b>SN</b>		

**AC Induction Motor Performance Data**

Record # 36548

Typical performance - not guaranteed values

Winding: 35WGP562-R002		Type: 3528M		Enclosure: TEFC	
<b>Nameplate Data</b>			<b>460 V, 60 Hz: High Voltage Connection</b>		
Rated Output (HP)		2	Full Load Torque		6.01 LB-FT
Volts		230/460	Start Configuration		direct on line
Full Load Amps		5.8/2.9	Breakdown Torque		24.6 LB-FT
R.P.M.		1750	Pull-up Torque		12.2 LB-FT
Hz	60 Phase	3	Locked-rotor Torque		17.9 LB-FT
NEMA Design Code	B KVA Code	L	Starting Current		23.7 A
Service Factor (S.F.)		1	No-load Current		1.72 A
NEMA Nom. Eff.	86.5 Power Factor	75	Line-line Res. @ 25°C		7.66 Ω
Rating - Duty		40C AMB-CONT	Temp. Rise @ Rated Load		75°C
S.F. Amps			Temp. Rise @ S.F. Load		90°C
			Locked-rotor Power Factor		50
			Rotor inertia		0.165 LB-FT <sup>2</sup>

**Load Characteristics 460 V, 60 Hz, 2 HP**

% of Rated Load	25	50	75	100	125	150
Power Factor	33	53	67	75	80	84
Efficiency	77.7	85.4	86.9	86.6	85.8	84.2
Speed	1789	1778	1765	1751	1737	1721
Line amperes	1.8	2.04	2.39	2.88	3.39	4.01

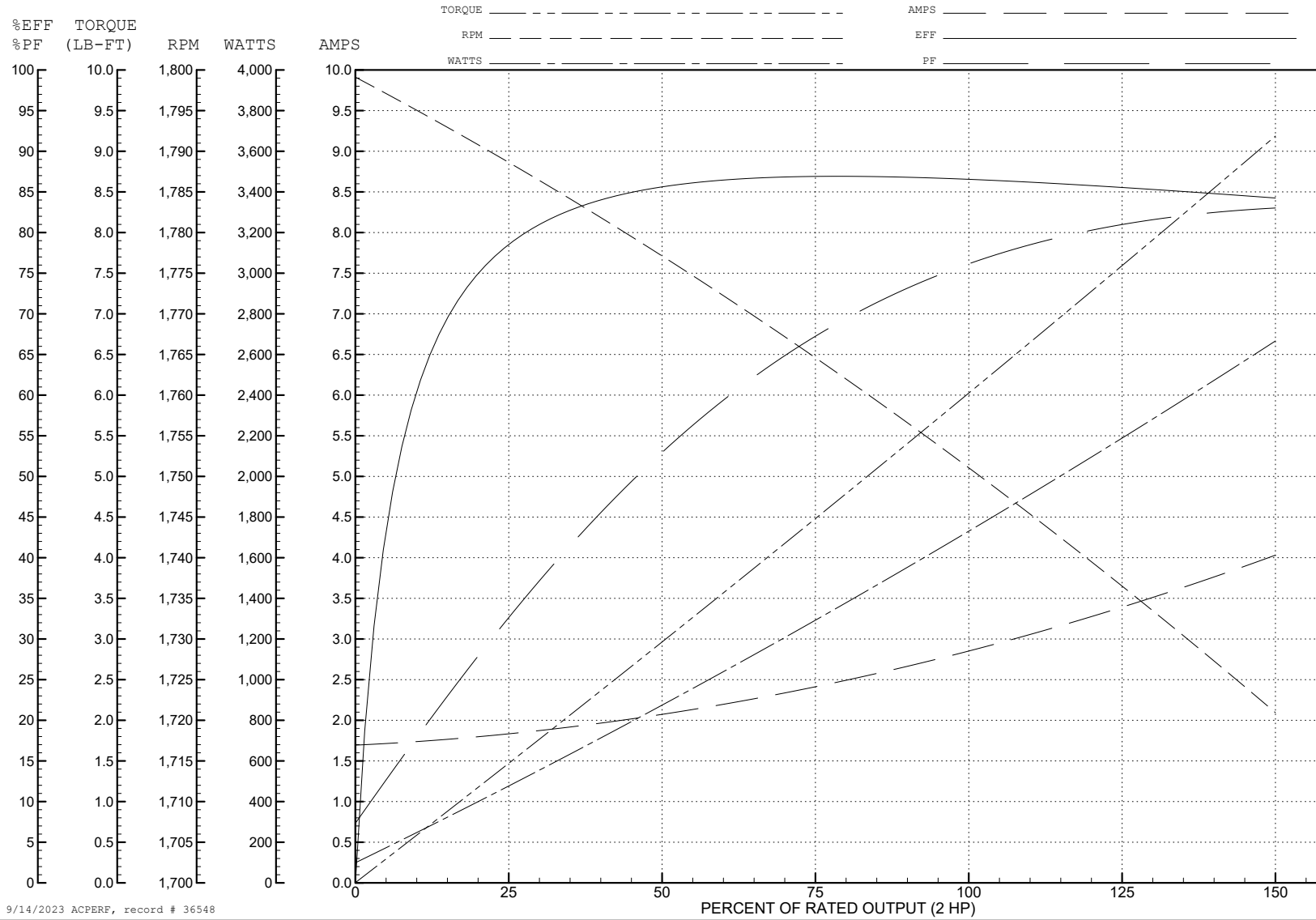
ABB Motors and Mechanical Inc.

WINDING # 35WGP562

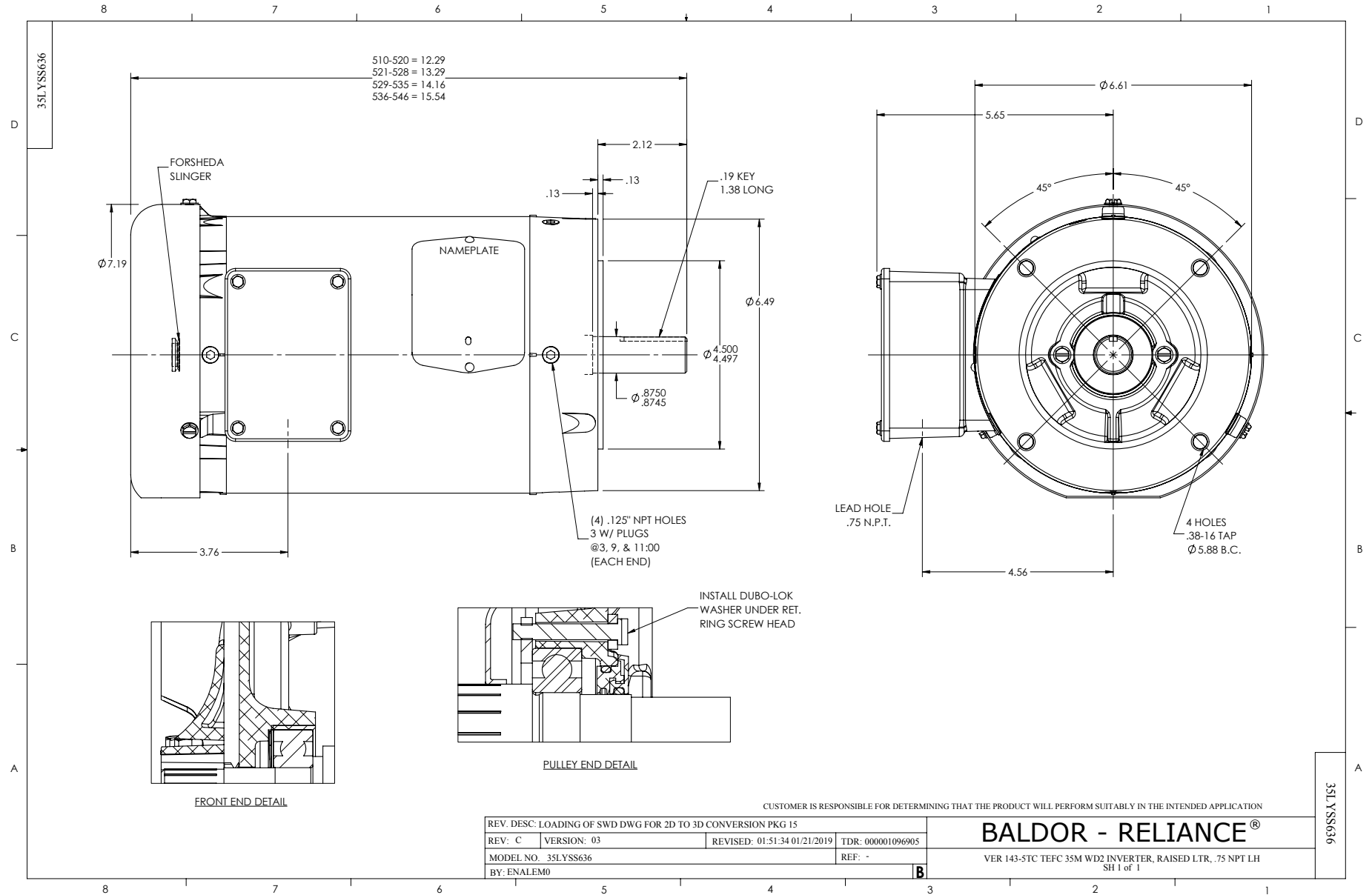
Typical performance - not guaranteed values.

2 HP 3 PH 60 HZ 1750 RPM 460 V 3528M

TORQUES (LB-FT): PO=24.6 PU=12.2 LR=17.9 LRA=23.7



9/14/2023 ACPERF, record # 36548





CD0005



LOW VOLTAGE  
(2Y)



LINE

HIGH VOLTAGE  
(1Y)



LINE

NOTES:

1. INTERCHANGE ANY TWO LINE LEADS TO REVERSE ROTATION.
2. OPTIONAL THERMOSTATS ARE PROVIDED WHEN SPECIFIED.
3. ACTUAL NUMBER OF INTERNAL PARALLEL CIRCUITS MAY BE A MULTIPLE OF THOSE SHOWN ABOVE.
4. LEAD COLORS ARE OPTIONAL. LEADS MUST ALWAYS BE NUMBERED AS SHOWN.

CD0005

REV. DESC: REVISE TO SHOW OPTIONAL COLORS			
REV. LTR: E	BY: JLP	REVISED: 01/19/99 10:15	TDR: 0171435
S00000		FILE: AAA00005140	MDL: -
		MTL: -	

BALDOR ELECTRIC Co.

3PH, DV, 9 LEADS