

**BALDOR® • RELIANCE™**

---

# Customer information packet

## VBM3542-D

.75/.55 KWHP, 1765 1/MIN IP44 IC411 19 KG

Class - None

Division - Not Applicable

Copyright © All product information within this document is subject to ABB Motors and Mechanical Inc. copyright © protection, unless otherwise noted.

9/14/2023 2:08:29 PM

## Specifications

Enclosure	TEFC
Frame	56C
Frame Material	Steel
Frequency	60.00 Hz
Motor Letter Type	Three Phase
Output @ Frequency	.750 HP @ 60 HZ
Phase	3
Synchronous Speed @ Frequency	1800 RPM @ 60 HZ
Voltage @ Frequency	460.0 V @ 60 HZ 230.0 V @ 60 HZ 208.0 V @ 60 HZ
XP Class and Group	None
XP Division	Not Applicable
Agency Approvals	CE CSA UR WEEE
Ambient Temperature	40 °C
Auxillary Box	No Auxillary Box
Auxillary Box Lead Termination	None
Base Indicator	No Mounting
Bearing Grease Type	Polyrex EM (-20F +300F)
Blower	None
Current @ Voltage	2.420 A @ 208.0 V 2.420 A @ 230.0 V 1.210 A @ 460.0 V
Design Code	B
Drip Cover	No Drip Cover
Duty Rating	CONT
Efficiency @ 100% Load	82.5 %
Electrically Isolated Bearing	Not Electrically Isolated
Feedback Device	NO FEEDBACK

## Part detail

Revision	E
Type	AC
Mech. spec.	35X145
Base	
Status	PRD/A
Elec. spec.	35WGG069
Layout	35LYX145
Eff. date	09-07-2023
CD Diagram	CD0005
Poles	04
Leads	9#18
Proprietary	False
Created date	01-10-2022

Front Shaft Indicator	None
Heater Indicator	No Heater
High Voltage Full Load Amps	1.2 a
Insulation Class	F
Inverter Code	Inverter Duty
IP Rating	NONE
KVA Code	K
Lifting Lugs	No Lifting Lugs
Locked Bearing Indicator	Locked Bearing
Motor Lead Quantity/Wire Size	9 @ 18 AWG
Motor Lead Termination	Flying Leads
Motor Standards	NEMA
Motor Type	3514M
Mounting Arrangement	F3
Number of Poles	4
Overall Length	16.29 IN
Power Factor	74
Product Family	General Purpose
Pulley End Bearing Type	Sealed Bearing
Pulley Face Code	C-Face
Pulley Shaft Indicator	Standard
Rodent Screen	None
Service Factor	1.15
Shaft Diameter	0.625 IN
Shaft Ground Indicator	No Shaft Grounding
Shaft Rotation	Reversible
Shaft Slinger Indicator	No Slinger
Speed	1765 rpm
Speed Code	Single Speed
Starting Method	Direct on line
Thermal Device - Bearing	None
Thermal Device - Winding	None
Vibration Sensor Indicator	No Vibration Sensor
Winding Thermal 1	None

**Winding Thermal 2**

**None**

---

**Nameplate**

<b>NP1372L</b>										
<b>CAT.NO.</b>	VBM3542-D									
<b>SPEC.</b>	35X145G069G2									
<b>HP</b>	.75/.55 KW									
<b>VOLTS</b>	208-230/460									
<b>AMP</b>	2.42/1.21									
<b>R.P.M. (1/MIN)</b>	1765									
<b>FRAME</b>	56C		<b>HZ</b>	60		<b>PH</b>	3			
<b>SER.F.</b>	1.15	<b>CODE</b>	K	<b>DES</b>	B	<b>CL</b>	F			
<b>NEMA-NOM-EFF</b>	82.5	<b>PF</b>	74							
<b>RATING</b>	40C AMB-S1 CONT									
<b>CC</b>			IP44 IC411 KG19							
<b>DE</b>	6205		<b>ODE</b>	6205						
<b>ENCL</b>	TEFC	<b>SN</b>								
	IE2-76.3(75%)71.1(50%)									

**AC Induction Motor Performance Data**

Record # 90018

Typical performance - not guaranteed values

Winding: 35WGG069-R006		Type: 3514M	Enclosure: TEFC
<b>Nameplate Data</b>		<b>460 V, 60 Hz: High Voltage Connection</b>	
Rated Output (HP)	.75	Full Load Torque	2.25 LB-FT
Volts	208-230/460	Start Configuration	direct on line
Full Load Amps	2.42/1.21	Breakdown Torque	7.38 LB-FT
R.P.M.	1765	Pull-up Torque	4.07 LB-FT
Hz	60 Phase	Locked-rotor Torque	4.7 LB-FT
NEMA Design Code	B KVA Code	Starting Current	7.7 A
Service Factor (S.F.)	1.15	No-load Current	0.734 A
NEMA Nom. Eff.	82.5 Power Factor	Line-line Res. @ 25°C	31.8 Ω
Rating - Duty	40C AMB-CONT	Temp. Rise @ Rated Load	24°C
S.F. Amps	2.72-2.64/1.32	Temp. Rise @ S.F. Load	29°C
		Locked-rotor Power Factor	66.8
		Rotor inertia	0.101 lb-ft <sup>2</sup>

**Load Characteristics 460 V, 60 Hz, 0.75 HP**

% of Rated Load	25	50	75	100	125	150	S.F.
Power Factor	33	52	65	74	80	83	78
Efficiency	71.4	81	83.3	83.6	82.7	81.2	83.1
Speed	1790	1782	1773	1763	1753	1740	1757
Line amperes	0.761	0.849	0.976	1.14	1.34	1.57	1.26

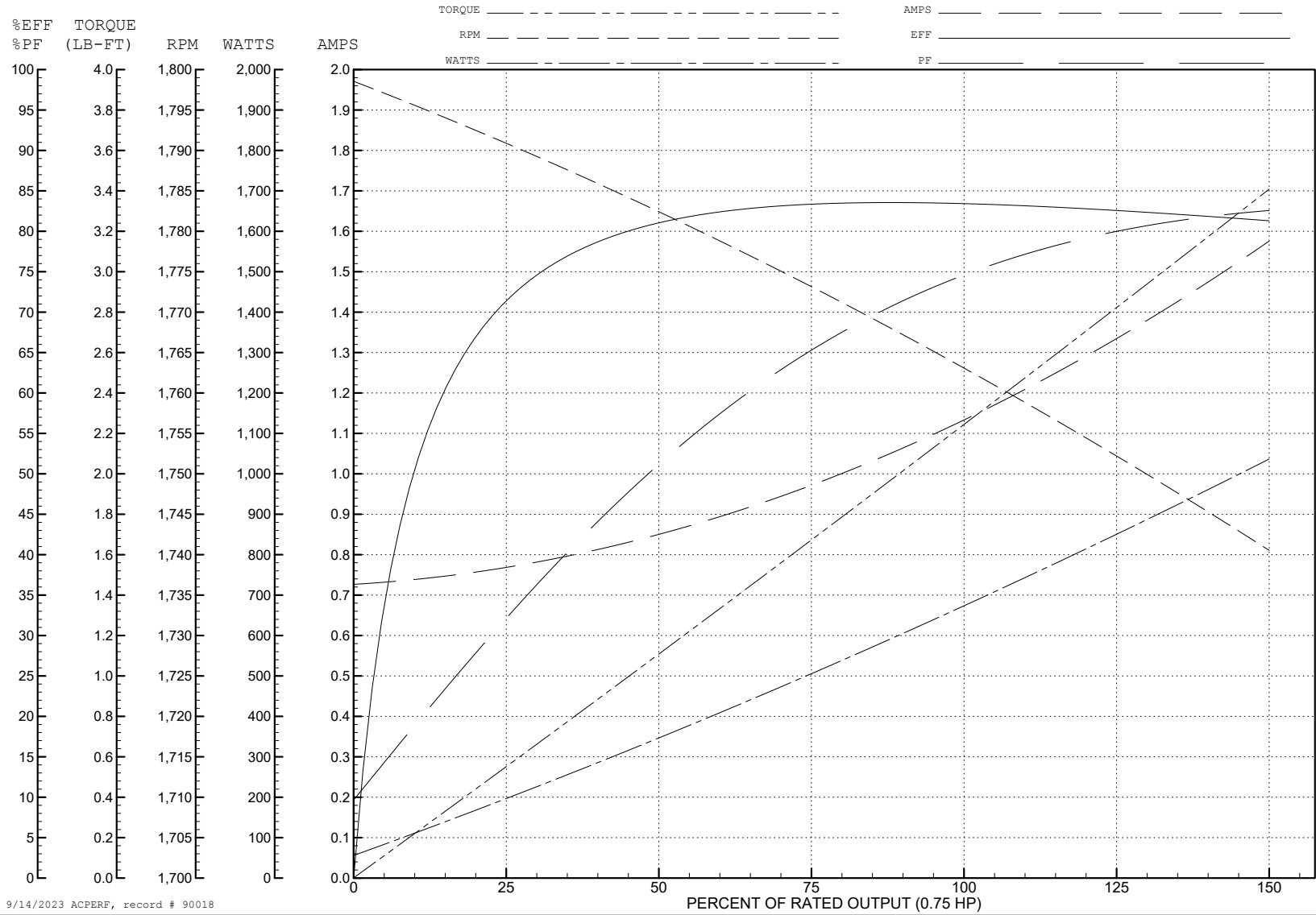
ABB Motors and Mechanical Inc.

WINDING # 35WGG069

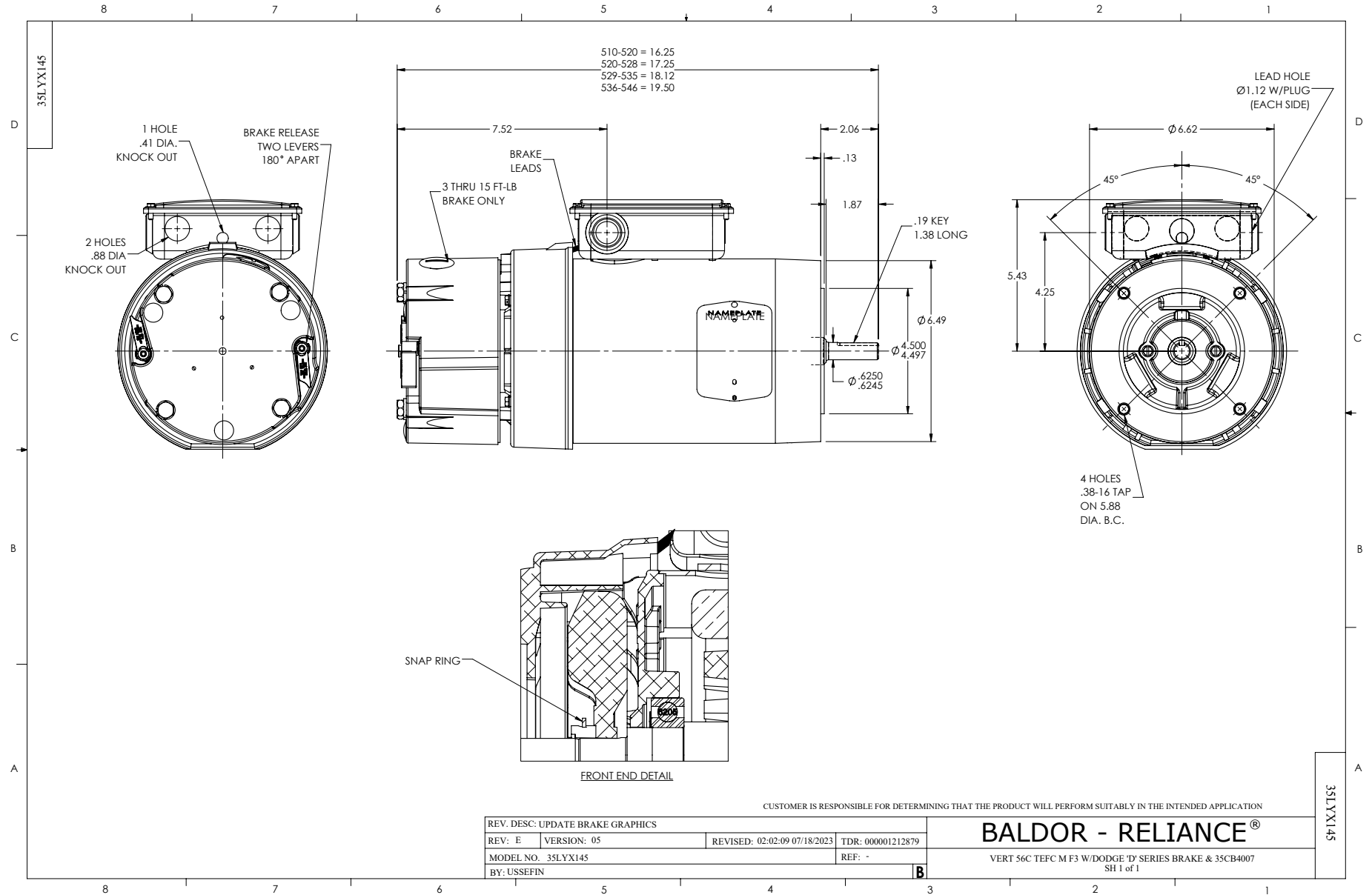
0.75 HP 3 PH 60 HZ 1765 RPM 460 V 3514M

Typical performance - not guaranteed values.

TORQUES (LB-FT): PO=7.38 PU=4.07 LR=4.7 LRA=7.7



9/14/2023 ACPERF, record # 90018





CD0005



LOW VOLTAGE  
(2Y)



LINE

HIGH VOLTAGE  
(1Y)



LINE

NOTES:

1. INTERCHANGE ANY TWO LINE LEADS TO REVERSE ROTATION.
2. OPTIONAL THERMOSTATS ARE PROVIDED WHEN SPECIFIED.
3. ACTUAL NUMBER OF INTERNAL PARALLEL CIRCUITS MAY BE A MULTIPLE OF THOSE SHOWN ABOVE.
4. LEAD COLORS ARE OPTIONAL. LEADS MUST ALWAYS BE NUMBERED AS SHOWN.

CD0005

REV. DESC: REVISE TO SHOW OPTIONAL COLORS			
REV. LTR: E	BY: JLP	REVISED: 01/19/99 10:15	TDR: 0171435
S00000		FILE: AAA00005140	MDL: -
		MTL: -	

**BALDOR ELECTRIC Co.**

3PH, DV, 9 LEADS

CD2120

WIRING CONNECTIONS (1 PHASE VAC)

	POWER LINE A	POWER LINE B	CAP TOGETHER	CAP ALONE
AC LOW VOLT.	B1	B2	B3 & B5	B4
AC HIGH VOLT.	B1 & B5	B2	---	B3 CAP ALONE B4 CAP ALONE
DC VOLT.	B1	B2	B3 & B5	B4

B1 WHITE  
B2 BLACK  
B3 GRAY  
B4 BLUE  
B5 RED

CD2120

REV. DESC: NEW		
REV. LTR: -	VERSION: 00	TDR: 000000741785
FILE: \CKA\00037\282	REVISED: 12: 28:11 04/12/2012	
MTL: -	BY: CKRONSO	

**BALDOR • DODGE • RELIANCE**

D-SERIES MOTOR BRAKE 5LD AC\DC

SH 1 of 1