

BALDOR • RELIANCE

Customer information packet

VHECP3663T

5HP, 3490RPM, 3PH, 60HZ, 184, HP, 0632M, TEFC, F

Class - None

Division - Not Applicable

Specifications

Enclosure	TEFC
Frame	184HP
Frame Material	Iron
Frequency	60.00 Hz
Motor Letter Type	Three Phase
Output @ Frequency	5.000 HP @ 60 HZ
Phase	3
Synchronous Speed @ Frequency	3600 RPM @ 60 HZ
Voltage @ Frequency	460.0 V @ 60 HZ 230.0 V @ 60 HZ
XP Class and Group	None
XP Division	Not Applicable
Agency Approvals	CSA CSA EEV UR
Ambient Temperature	40 °C
Auxillary Box	No Auxillary Box
Auxillary Box Lead Termination	None
Base Indicator	No Mounting
Bearing Grease Type	Polyrex EM (-20F +300F)
Blower	None
Current @ Voltage	12.500 A @ 208.0 V 5.700 A @ 460.0 V 11.400 A @ 230.0 V
Design Code	A
Drip Cover	Drip Cover
Duty Rating	CONT
Efficiency @ 100% Load	90.2 %
Electrically Isolated Bearing	Not Electrically Isolated
Feedback Device	NO FEEDBACK
Front Face Code	Standard
Front Shaft Indicator	None

Part detail

Revision	U
Type	AC
Mech. spec.	06F448
Base	
Status	PRD/A
Elec. spec.	06WGW730
Layout	06LYF448
Eff. date	05-02-2023
CD Diagram	CD0005
Poles	02
Leads	9#16
Proprietary	False
Created date	10-31-2005

Heater Indicator	No Heater
High Voltage Full Load Amps	5.7 a
Insulation Class	F
Inverter Code	Inverter Ready
KVA Code	M
Lifting Lugs	Vertical Lifting Lugs
Locked Bearing Indicator	Locked Bearing
Motor Lead Exit	Ko Box
Motor Lead Quantity/Wire Size	9 @ 16 AWG
Motor Lead Termination	Flying Leads
Motor Standards	NEMA
Motor Type	0632M
Mounting Arrangement	F1
Number of Poles	2
Overall Length	22.18 IN
Power Factor	90
Product Family	Super-E Chemical Processing
Pulley End Bearing Type	Ball
Pulley Face Code	P-Base
Pulley Shaft Indicator	P-Base Groove & Key
Rodent Screen	None
Service Factor	1.15
Shaft Diameter	1.125 IN
Shaft Extension Location	Pulley End
Shaft Ground Indicator	No Shaft Grounding
Shaft Rotation	Reversible
Shaft Slinger Indicator	No Slinger
Speed	3490 rpm
Speed Code	Single Speed
Starting Method	Direct on line
Thermal Device - Bearing	None
Thermal Device - Winding	None
Vibration Sensor Indicator	No Vibration Sensor
Winding Thermal 1	None

Winding Thermal 2

None

Nameplate

NP1260									
CAT.NO.	VHECP3663T								
SPEC.	06F448W730								
HP	5								
VOLTS	230/460								
AMP	11.4/5.7								
RPM	3490								
FRAME	184HP	HZ	60	PH	3				
SER.F.	1.15	CODE	M	DES	A	CL	F		
NEMA-NOM-EFF	90.2	PF	90						
RATING	40C AMB-CONT								
CC	010A								
DE	6307	ODE	6206						
ENCL	TEFC	SN							

AC Induction Motor Performance Data

Record # 35536

Typical performance - not guaranteed values

Winding: 06WGW730-R016		Type: 0632M	Enclosure: TEFC	
Nameplate Data			460 V, 60 Hz: High Voltage Connection	
Rated Output (HP)	5	Full Load Torque	7.54 LB-FT	
Volts	230/460	Start Configuration	direct on line	
Full Load Amps	11.4/5.7	Breakdown Torque	40.1 LB-FT	
R.P.M.	3490	Pull-up Torque	30.6 LB-FT	
Hz	60 Phase	Locked-rotor Torque	36.9 LB-FT	
NEMA Design Code	A KVA Code	Starting Current	64.8 A	
Service Factor (S.F.)	1.15	No-load Current	2.08 A	
NEMA Nom. Eff.	90.2 Power Factor	Line-line Res. @ 25°C	1.93 Ω	
Rating - Duty	40C AMB-CONT	Temp. Rise @ Rated Load	51°C	
S.F. Amps		Temp. Rise @ S.F. Load	62°C	
		Locked-rotor Power Factor	45	
		Rotor inertia	0.143 LB-FT ²	

Load Characteristics 460 V, 60 Hz, 5 HP

% of Rated Load	25	50	75	100	125	150	S.F.
Power Factor	55	76	85	90	93	93	92
Efficiency	84.5	89.4	90.8	90.6	90	89	90.2
Speed	3570	3544	3517	3489	3458	3426	3470
Line amperes	2.54	3.47	4.6	5.76	7.03	8.46	6.52

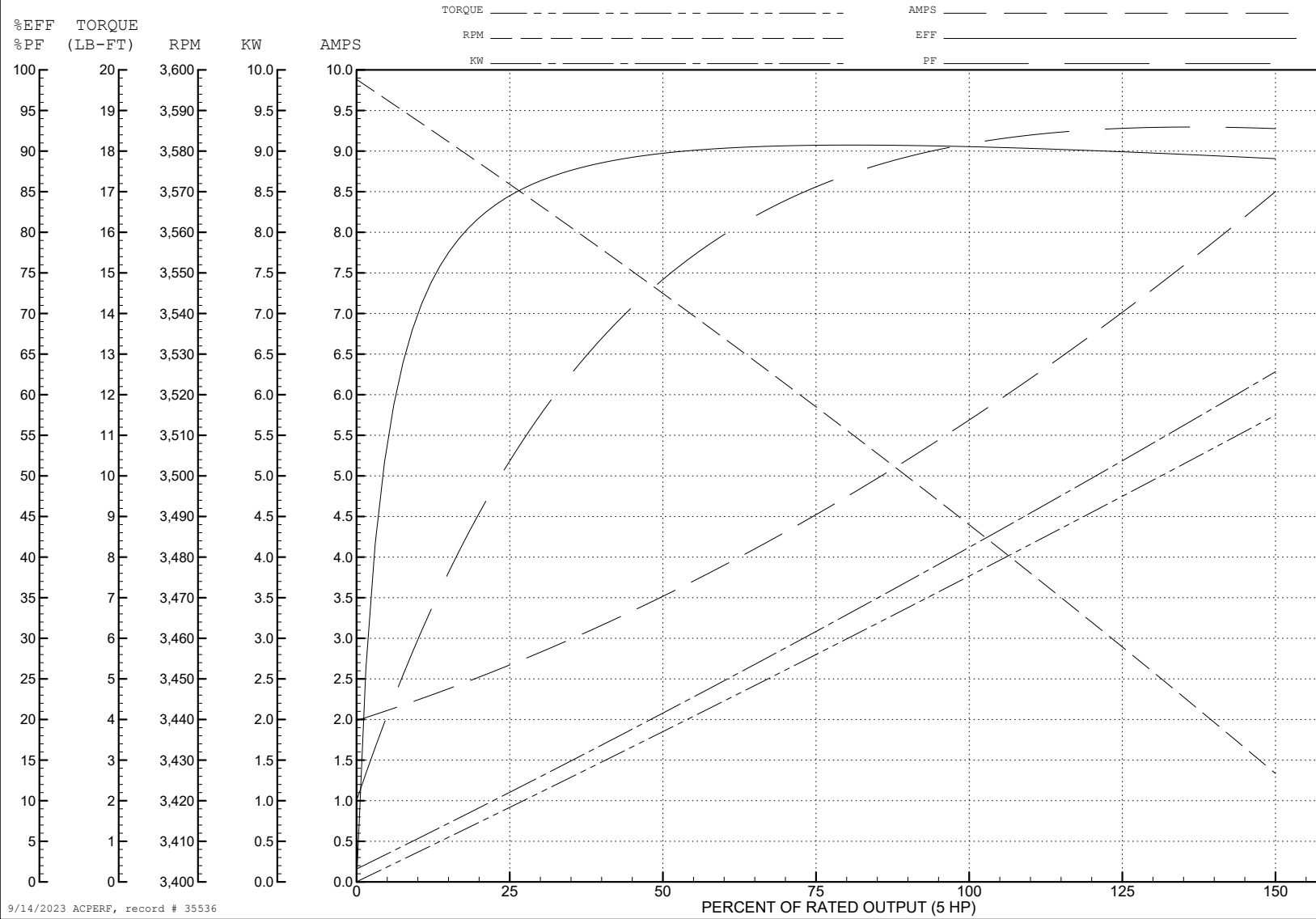
ABB Motors and Mechanical Inc.

WINDING # 06WGW730

Typical performance - not guaranteed values.

5 HP 3 PH 60 HZ 3490 RPM 460 V 0632M

TORQUES (LB-FT): PO=40.1 PU=30.6 LR=36.9 LRA=64.8



9/14/2023 ACPERF, record # 35536

AC Induction Motor Performance Data

Record # 51599

Typical performance - not guaranteed values

Winding: 06WGW730-R016		Type: 0632M	Enclosure: TEFC	
Nameplate Data			380 V, 60 Hz: High Voltage Connection	
Rated Output (HP)	5	Full Load Torque	7.65 LB-FT	
Volts	230/460	Start Configuration	direct on line	
Full Load Amps	11.4/5.7	Breakdown Torque	26.5 LB-FT	
R.P.M.	3490	Pull-up Torque	19.7 LB-FT	
Hz	60 Phase	Locked-rotor Torque	23.7 LB-FT	
NEMA Design Code	A KVA Code	Starting Current	51.9 A	
Service Factor (S.F.)	1.15	No-load Current	1.49 A	
NEMA Nom. Eff.	90.2 Power Factor	Line-line Res. @ 25°C	2.04 Ω	
Rating - Duty	40C AMB-CONT	Temp. Rise @ Rated Load	60°C	
S.F. Amps		Temp. Rise @ S.F. Load	77°C	
		Locked-rotor Power Factor	43.2	
		Rotor inertia	0.143 LB-FT ²	

Load Characteristics 380 V, 60 Hz, 5 HP

% of Rated Load	25	50	75	100	125	150	S.F.
Power Factor	70	85	90	93	94	94	94
Efficiency	87	90.2	90.4	89.3	87.7	85.6	88.3
Speed	3559	3522	3482	3440	3391	3337	3411
Line amperes	2.33	3.7	5.26	6.84	8.58	10.6	7.88

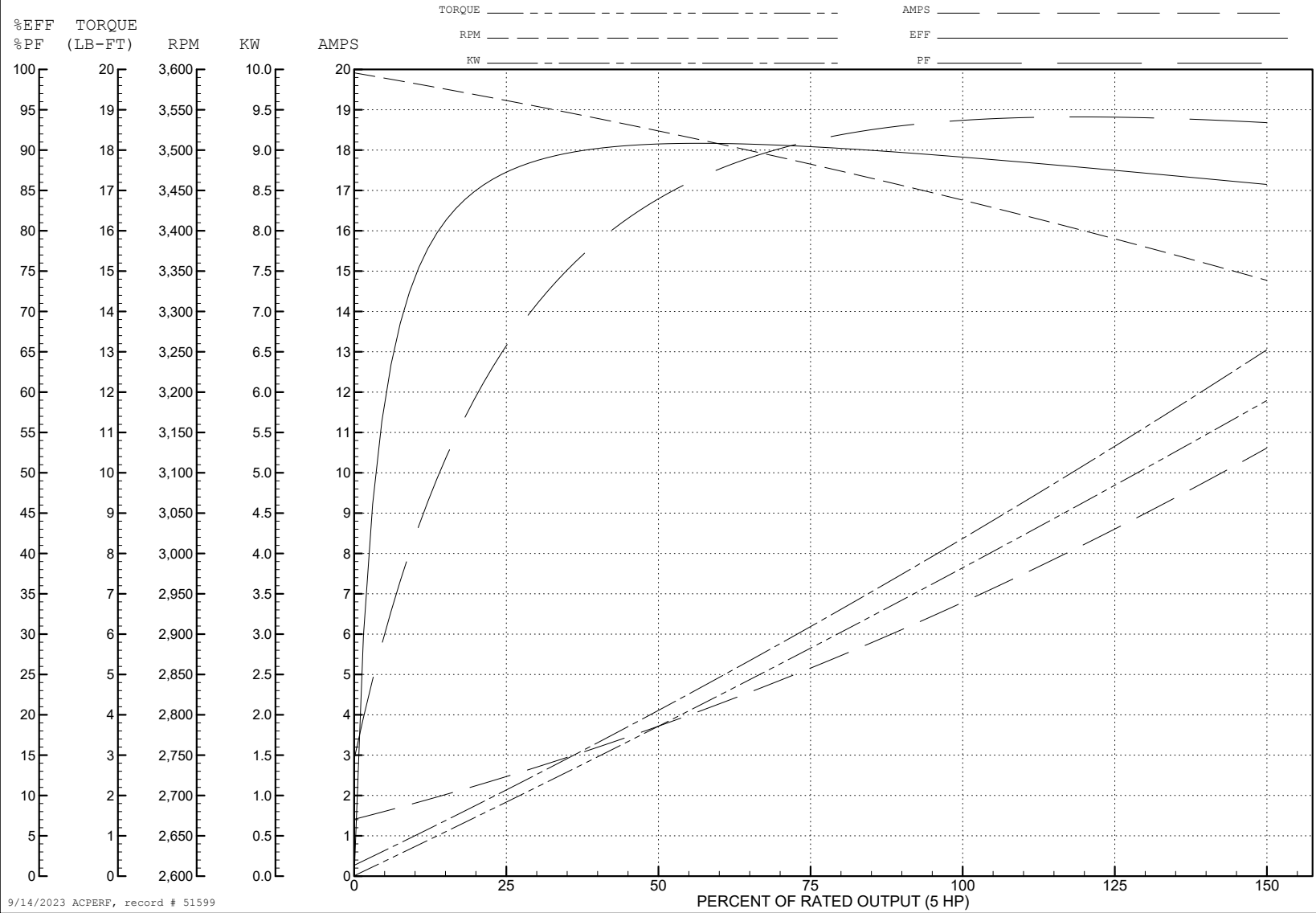
ABB Motors and Mechanical Inc.

WINDING # 06WGW730

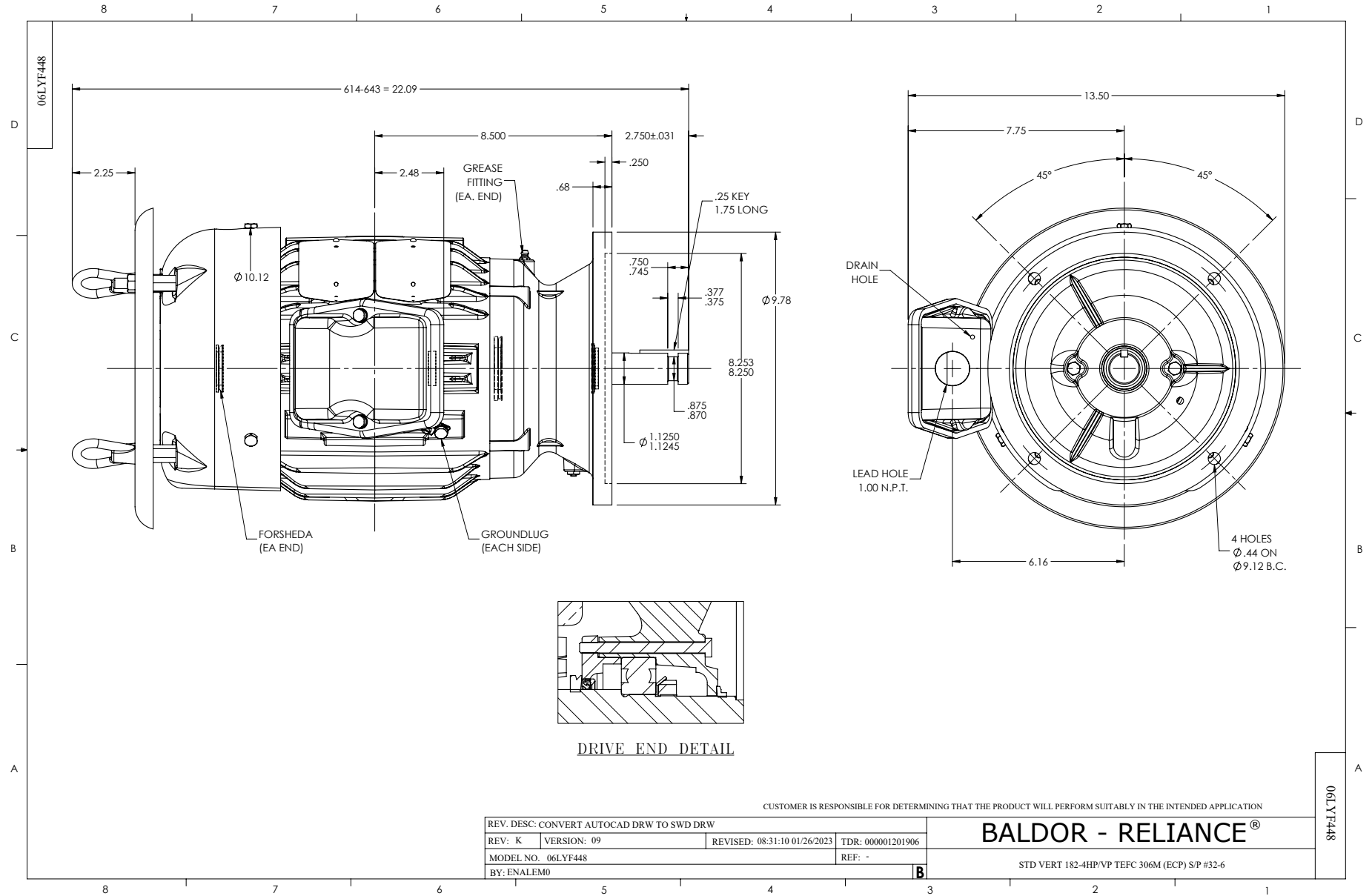
5 HP 3 PH 60 HZ 3490 RPM 380 V 0632M

Typical performance - not guaranteed values.

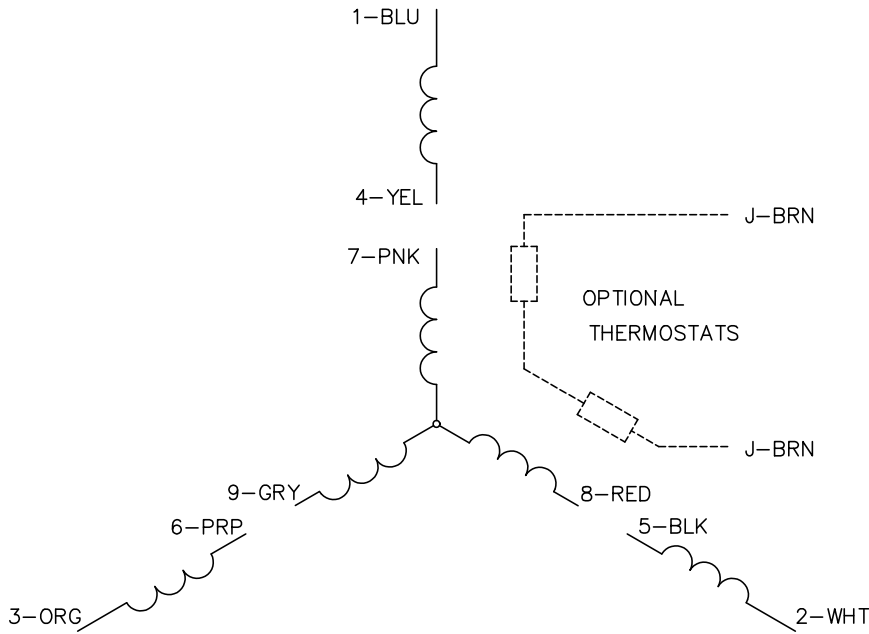
TORQUES (LB-FT): PO=26.5 PU=19.7 LR=23.7 LRA=51.9



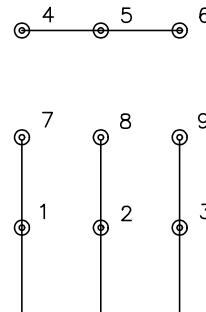
9/14/2023 ACPERF, record # 51599



CD0005

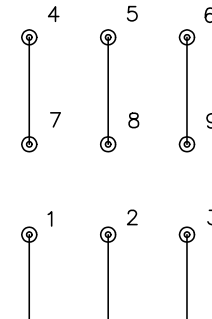


LOW VOLTAGE
(2Y)



LINE

HIGH VOLTAGE
(1Y)



LINE

NOTES:

1. INTERCHANGE ANY TWO LINE LEADS TO REVERSE ROTATION.
2. OPTIONAL THERMOSTATS ARE PROVIDED WHEN SPECIFIED.
3. ACTUAL NUMBER OF INTERNAL PARALLEL CIRCUITS MAY BE A MULTIPLE OF THOSE SHOWN ABOVE.
4. LEAD COLORS ARE OPTIONAL. LEADS MUST ALWAYS BE NUMBERED AS SHOWN.

CD0005

REV. DESC: REVISE TO SHOW OPTIONAL COLORS			
REV. LTR: E	BY: JLP	REVISED: 01/19/99 10:15	TDR: 0171435
S00000		FILE: AAA00005140	MDL: -
		MTL: -	

BALDOR ELECTRIC Co.

3PH, DV, 9 LEADS