

BALDOR • RELIANCE

Customer information packet

VHECP3770T

7.5HP, 1770RPM, 3PH, 60HZ, 213HP, 0738M, TEFC

Class - None

Division - Not Applicable

Specifications

Enclosure	TEFC
Frame	213HP
Frame Material	Iron
Frequency	60.00 Hz
Motor Letter Type	Three Phase
Output @ Frequency	7.500 HP @ 60 HZ
Phase	3
Synchronous Speed @ Frequency	1800 RPM @ 60 HZ
Voltage @ Frequency	230.0 V @ 60 HZ 460.0 V @ 60 HZ
XP Class and Group	None
XP Division	Not Applicable
Agency Approvals	CSA EEV UR CSA
Ambient Temperature	40 °C
Auxillary Box	No Auxillary Box
Auxillary Box Lead Termination	None
Base Indicator	No Mounting
Bearing Grease Type	Polyrex EM (-20F +300F)
Blower	None
Current @ Voltage	19.000 A @ 230.0 V 20.000 A @ 208.0 V 9.500 A @ 460.0 V
Design Code	A
Drip Cover	Drip Cover
Duty Rating	CONT
Efficiency @ 100% Load	91.7 %
Electrically Isolated Bearing	Not Electrically Isolated
Feedback Device	NO FEEDBACK
Front Shaft Indicator	None
Heater Indicator	No Heater

Part detail

Revision	C
Type	AC
Mech. spec.	07K215
Base	
Status	PRD/A
Elec. spec.	07WGT510
Layout	07LYK215
Eff. date	05-02-2023
CD Diagram	CD0005
Poles	04
Leads	9#14
Proprietary	False
Created date	02-08-2021

High Voltage Full Load Amps	9.5 a
Insulation Class	F
Inverter Code	Inverter Ready
KVA Code	J
Lifting Lugs	Vertical Lifting Lugs
Locked Bearing Indicator	Locked Bearing
Motor Lead Quantity/Wire Size	9 @ 14 AWG
Motor Lead Termination	Flying Leads
Motor Standards	NEMA
Motor Type	0738M
Mounting Arrangement	F1
Number of Poles	4
Overall Length	22.51 IN
Power Factor	81
Product Family	Chemical Processing (Not DC)
Pulley End Bearing Type	Ball
Pulley Face Code	P-Base
Pulley Shaft Indicator	Standard
Rodent Screen	None
Service Factor	1.15
Shaft Diameter	1.125 IN
Shaft Ground Indicator	No Shaft Grounding
Shaft Rotation	Reversible
Shaft Slinger Indicator	No Slinger
Speed	1770 rpm
Speed Code	Single Speed
Starting Method	Direct on line
Thermal Device - Bearing	None
Thermal Device - Winding	None
Vibration Sensor Indicator	No Vibration Sensor
Winding Thermal 1	None
Winding Thermal 2	None

Nameplate

NP1260									
CAT.NO.	VHECP3770T								
SPEC.	07K215T510								
HP	7.5								
VOLTS	230/460								
AMP	19/9.5								
RPM	1770								
FRAME	213HP	HZ	60	PH	3				
SER.F.	1.15	CODE	J	DES	A	CL	F		
NEMA-NOM-EFF	91.7	PF	81						
RATING	40C AMB-CONT								
CC	010A								
DE	6309	ODE	6206						
ENCL	TEFC	SN							
	SFA 21.4/10.7								

AC Induction Motor Performance Data

Record # 85534

Preliminary Data Sheet

Winding: 07WGT510-R001		Type: 0738M		Enclosure: TEFC	
Nameplate Data			460 V, 60 Hz: High Voltage Connection		
Rated Output (HP)	7.5	Full Load Torque	22.3 LB-FT		
Volts	230/460	Start Configuration	direct on line		
Full Load Amps	19/9.5	Breakdown Torque	69.1 LB-FT		
R.P.M.	1770	Pull-up Torque	28.7 LB-FT		
Hz	60 Phase	3	Locked-rotor Torque	39.1 LB-FT	
NEMA Design Code	A KVA Code	J	Starting Current	67.4 A	
Service Factor (S.F.)	1.15	No-load Current	4.07 A		
NEMA Nom. Eff.	91.7 Power Factor	81	Line-line Res. @ 25°C	1.55 Ω	
Rating - Duty	40C AMB-CONT	Temp. Rise @ Rated Load	48°C		
S.F. Amps	21.4/10.7	Temp. Rise @ S.F. Load	62°C		
		Locked-rotor Power Factor	41.2		
		Rotor inertia	0.934 lb-ft ²		

Load Characteristics 460 V, 60 Hz, 7.5 HP

% of Rated Load	25	50	75	100	125	150	S.F.
Power Factor	44	66	76	81	84	85	83
Efficiency	88	91.7	92.2	91.7	90.7	89.3	90.9
Speed	1792	1785	1777	1769	1759	1749	1761
Line amperes	4.61	5.85	7.48	9.43	11.6	13.9	10.7

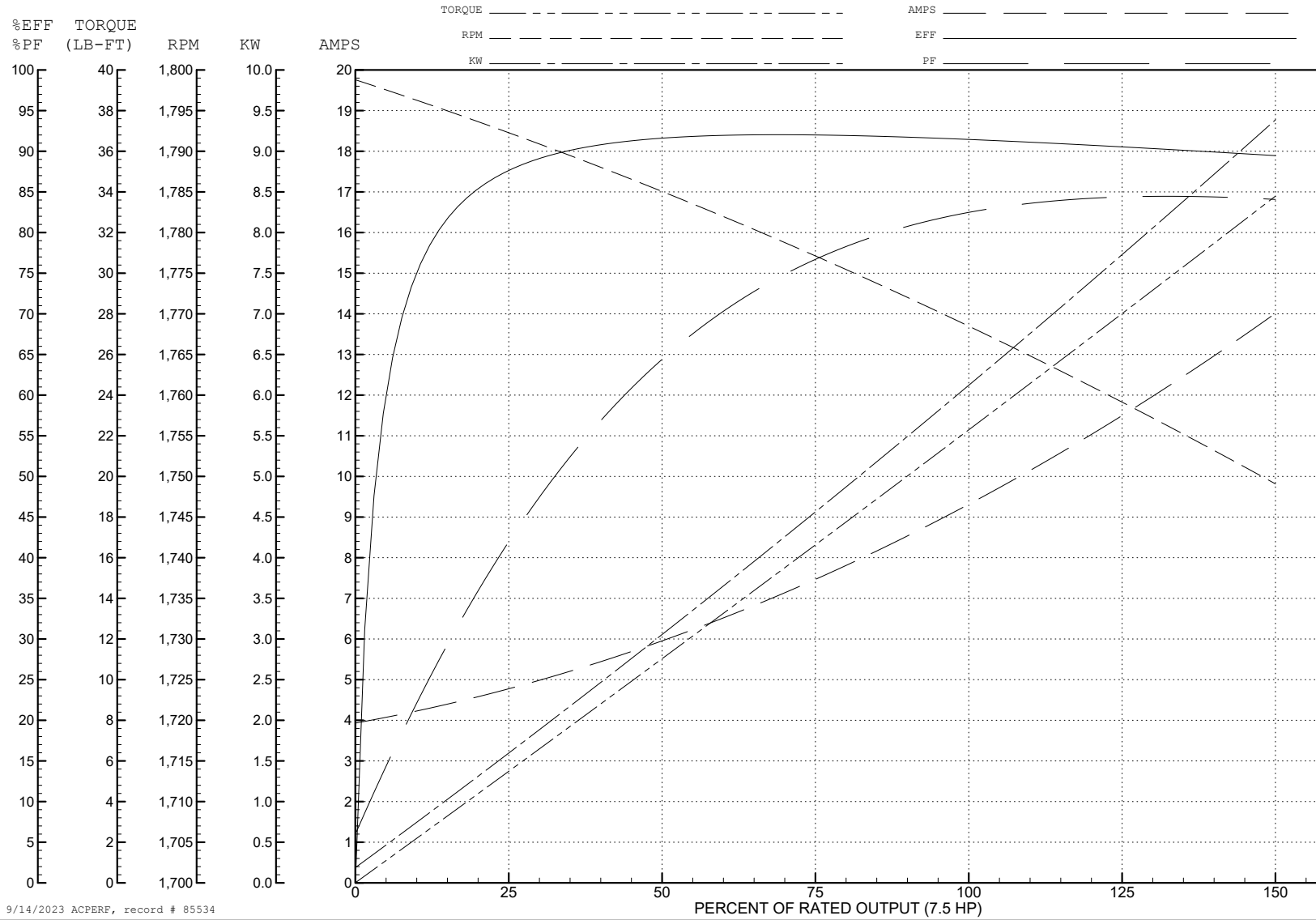
ABB Motors and Mechanical Inc.

WINDING # 07WGT510

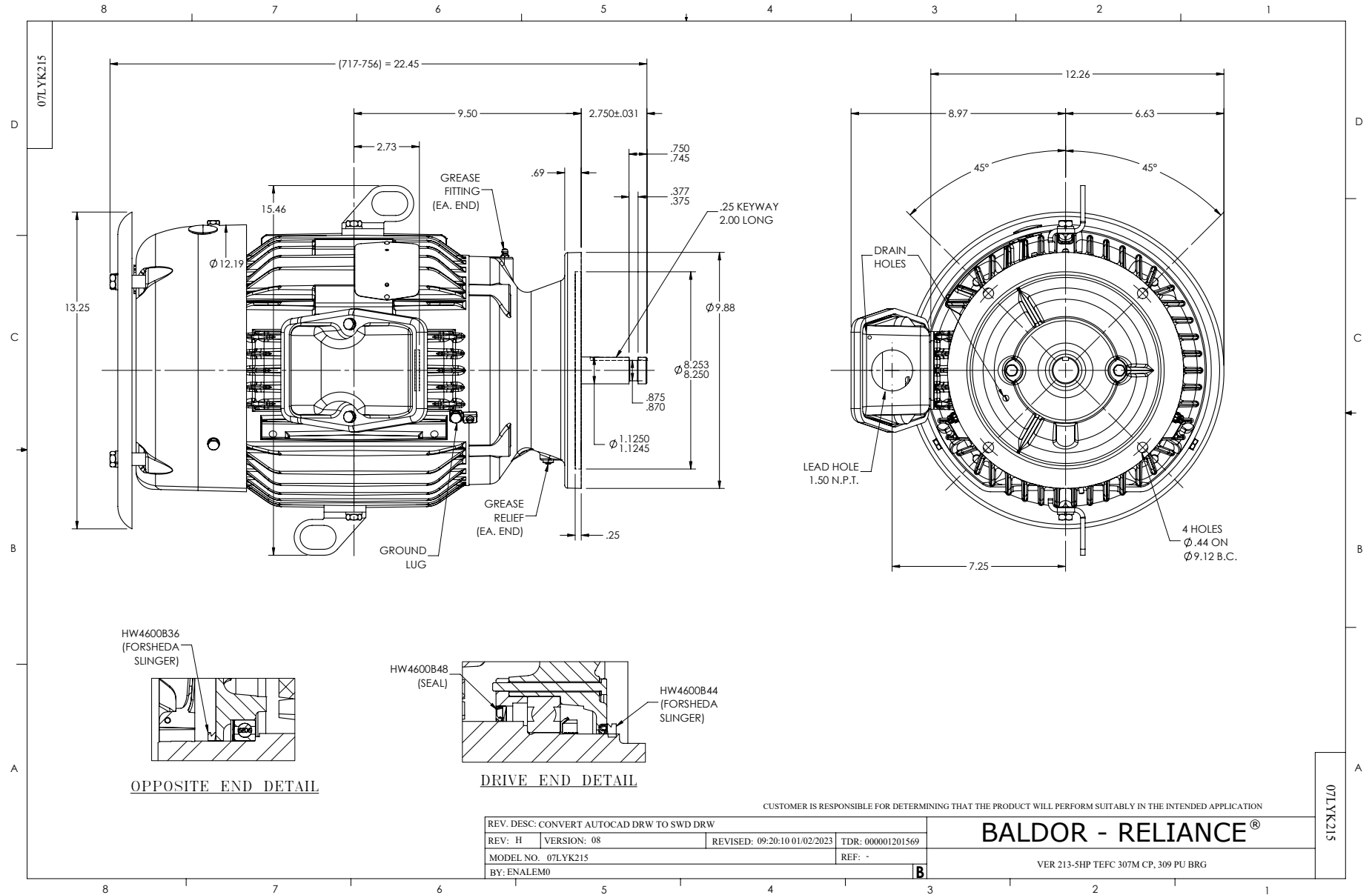
7.5 HP 3 PH 60 HZ 1770 RPM 460 V 0738M

Typical performance - not guaranteed values.

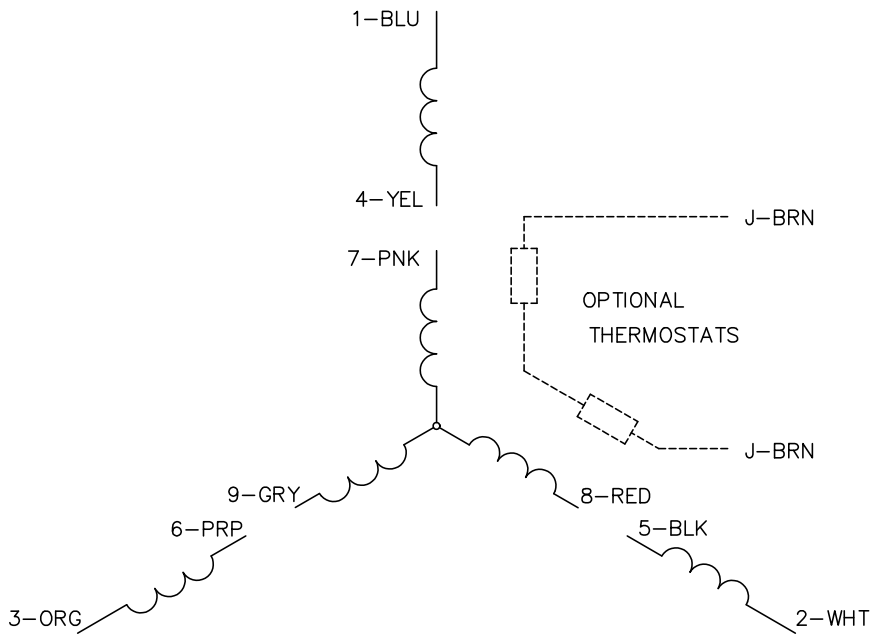
TORQUES (LB-FT): PO=69.1 PU=28.7 LR=39.1 LRA=67.4



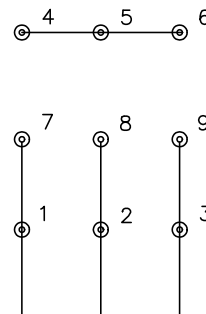
9/14/2023 ACPERF, record # 85534



CD0005

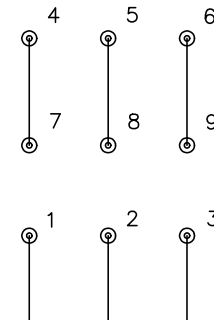


LOW VOLTAGE
(2Y)



LINE

HIGH VOLTAGE
(1Y)



LINE

NOTES:

1. INTERCHANGE ANY TWO LINE LEADS TO REVERSE ROTATION.
2. OPTIONAL THERMOSTATS ARE PROVIDED WHEN SPECIFIED.
3. ACTUAL NUMBER OF INTERNAL PARALLEL CIRCUITS MAY BE A MULTIPLE OF THOSE SHOWN ABOVE.
4. LEAD COLORS ARE OPTIONAL. LEADS MUST ALWAYS BE NUMBERED AS SHOWN.

CD0005

REV. DESC: REVISE TO SHOW OPTIONAL COLORS

REV. LTR: E BY: JLP REVISED: 01/19/99 10:15 TDR: 0171435

500000

FILE: AAA00005140

MDL: -

MTL: -

BALDOR ELECTRIC Co.

3PH, DV, 9 LEADS