

BALDOR • RELIANCE

Customer information packet

VHECP4106T

20HP, 3540RPM, 3PH, 60HZ, 256HP, 0944M, TEFC

Class - None

Division - Not Applicable

Copyright © All product information within this document is subject to ABB Motors and Mechanical Inc. copyright © protection, unless otherwise noted.

9/14/2023 2:25:33 PM

Specifications

Enclosure	TEFC
Frame	256HP
Frame Material	Iron
Frequency	60.00 Hz
Motor Letter Type	Three Phase
Output @ Frequency	20.000 HP @ 60 HZ
Phase	3
Synchronous Speed @ Frequency	3600 RPM @ 60 HZ
Voltage @ Frequency	460.0 V @ 60 HZ 230.0 V @ 60 HZ
XP Class and Group	None
XP Division	Not Applicable
Agency Approvals	CSA CSA EEV UR
Ambient Temperature	40 °C
Auxillary Box	No Auxillary Box
Auxillary Box Lead Termination	None
Base Indicator	No Mounting
Bearing Grease Type	Polyrex EM (-20F +300F)
Blower	None
Current @ Voltage	46.000 A @ 230.0 V 51.000 A @ 208.0 V 23.000 A @ 460.0 V
Design Code	A
Drip Cover	Drip Cover
Duty Rating	CONT
Efficiency @ 100% Load	92.4 %
Electrically Isolated Bearing	Not Electrically Isolated
Feedback Device	NO FEEDBACK
Front Face Code	Standard
Front Shaft Indicator	None

Part detail

Revision	AK
Type	AC
Mech. spec.	09G604
Base	
Status	PRD/A
Elec. spec.	09WGY613
Layout	09LYG604
Eff. date	07-17-2023
CD Diagram	CD0180
Poles	02
Leads	9#12
Proprietary	False
Created date	01-01-0001

Heater Indicator	No Heater
High Voltage Full Load Amps	23.0 a
Insulation Class	F
Inverter Code	Inverter Ready
KVA Code	K
Lifting Lugs	Vertical Lifting Lugs
Locked Bearing Indicator	Locked Bearing
Motor Lead Exit	Ko Box
Motor Lead Quantity/Wire Size	9 @ 12 AWG
Motor Lead Termination	Flying Leads
Motor Standards	NEMA
Motor Type	0944M
Mounting Arrangement	F1
Number of Poles	2
Overall Length	25.73 IN
Power Factor	89
Product Family	Super-E Chemical Processing
Pulley End Bearing Type	Ball
Pulley Face Code	P-Base
Pulley Shaft Indicator	P-Base Groove & Key
Rodent Screen	None
Service Factor	1.15
Shaft Diameter	1.125 IN
Shaft Extension Location	Pulley End
Shaft Ground Indicator	No Shaft Grounding
Shaft Rotation	Reversible
Shaft Slinger Indicator	Shaft Slinger
Speed	3540 rpm
Speed Code	Single Speed
Starting Method	Direct on line
Thermal Device - Bearing	None
Thermal Device - Winding	None
Vibration Sensor Indicator	No Vibration Sensor
Winding Thermal 1	None

Winding Thermal 2

None

Nameplate

NP1260									
CAT.NO.	VHECP4106T								
SPEC.	09G604Y613G1								
HP	20								
VOLTS	230/460								
AMP	46/23								
RPM	3540								
FRAME	256HP	HZ	60	PH	3				
SER.F.	1.15	CODE	K	DES	A	CL	F		
NEMA-NOM-EFF	92.4	PF	89						
RATING	40C AMB-CONT								
CC	010A								
DE	6311	ODE	6208						
ENCL	TEFC	SN							

AC Induction Motor Performance Data

Record # 38114

Typical performance - not guaranteed values

Winding: 09WGY613-R001		Type: 0944M		Enclosure: TEFC	
Nameplate Data			460 V, 60 Hz: High Voltage Connection		
Rated Output (HP)	20	Full Load Torque	29.7 LB-FT		
Volts	230/460	Start Configuration	direct on line		
Full Load Amps	46/23	Breakdown Torque	147 LB-FT		
R.P.M.	3540	Pull-up Torque	60.6 LB-FT		
Hz	60 Phase	3	Locked-rotor Torque	76.3 LB-FT	
NEMA Design Code	A KVA Code	K	Starting Current	223 A	
Service Factor (S.F.)	1.15	No-load Current	8.26 A		
NEMA Nom. Eff.	92.4 Power Factor	89	Line-line Res. @ 25°C	0.32708 Ω	
Rating - Duty	40C AMB-CONT	Temp. Rise @ Rated Load	60°C		
S.F. Amps		Temp. Rise @ S.F. Load	71°C		
		Locked-rotor Power Factor	28		
		Rotor inertia	1.12 LB-FT ²		

Load Characteristics 460 V, 60 Hz, 20 HP

% of Rated Load	25	50	75	100	125	150	S.F.
Power Factor	53	75	85	88	91	91	90
Efficiency	87.7	92.3	93.3	93.4	93	92.4	93.2
Speed	3584.9	3571.9	3557.8	3543.8	3528.7	3512.5	3535
Line amperes	9.98	13.5	17.8	22.7	27.7	33.3	25.7

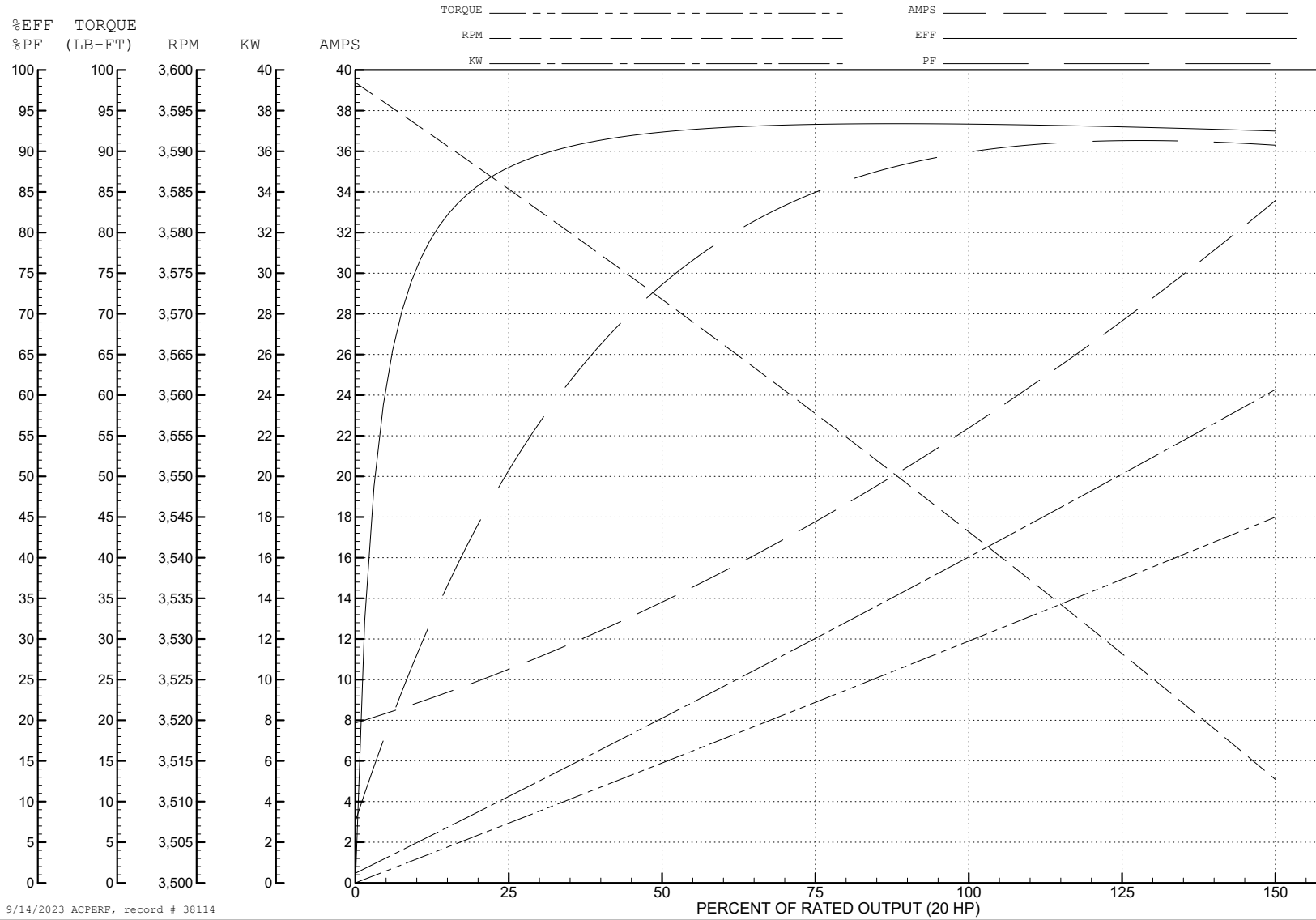
ABB Motors and Mechanical Inc.

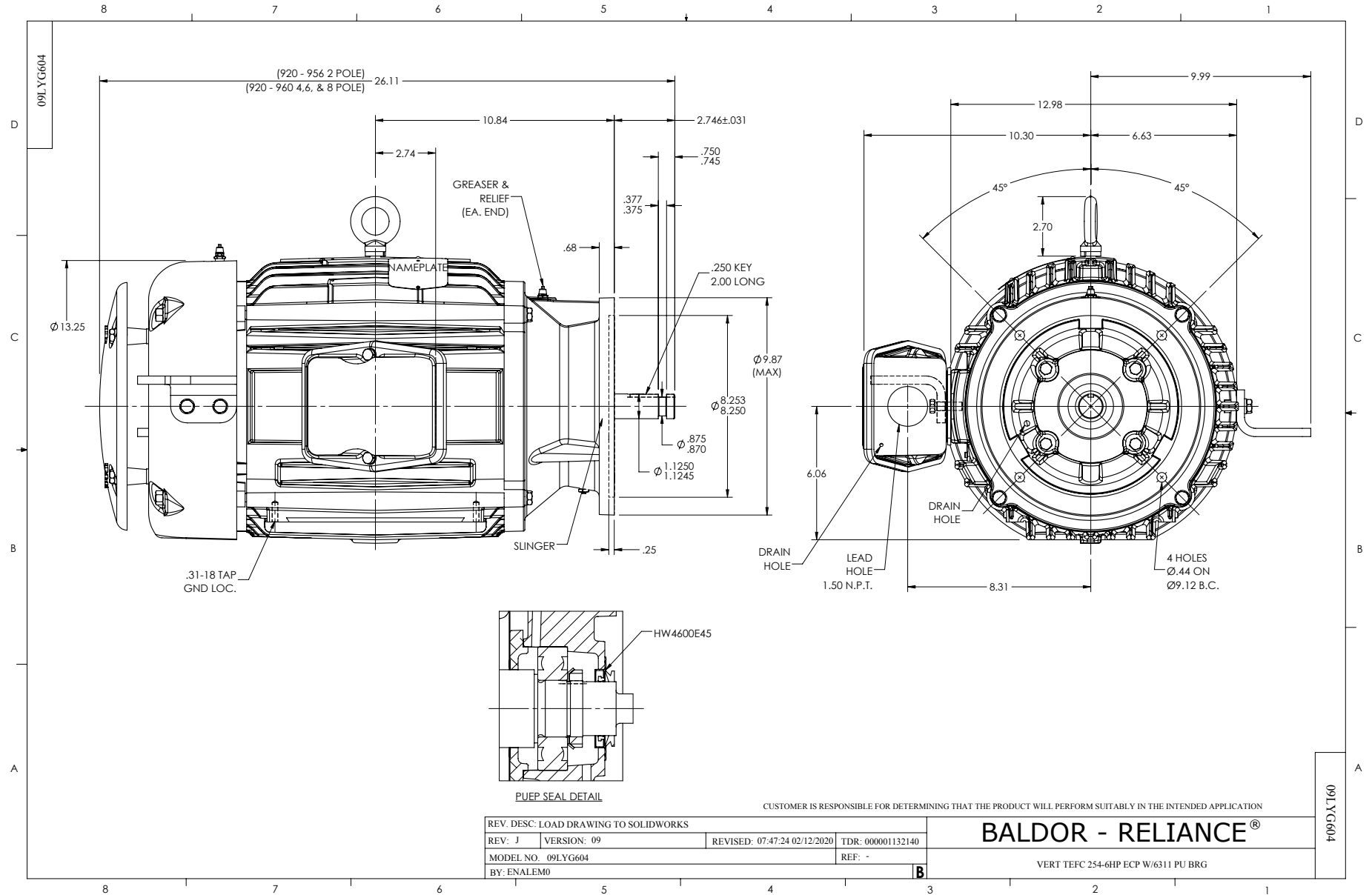
WINDING # 09WGY613

Typical performance - not guaranteed values.

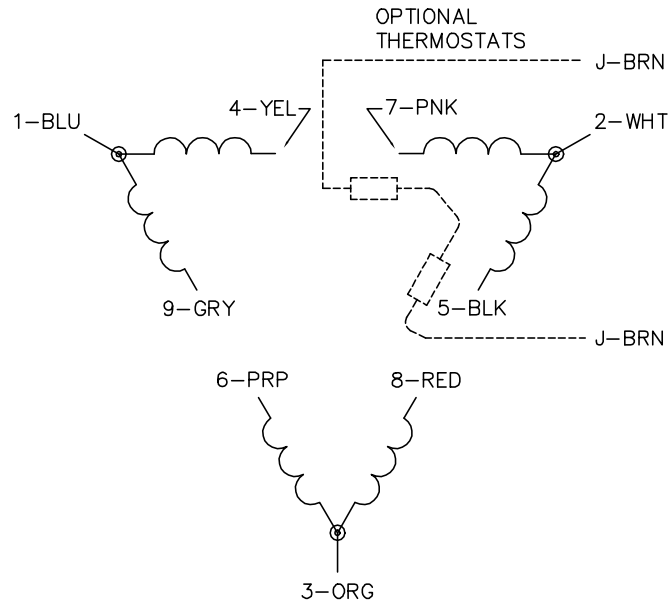
20 HP 3 PH 60 HZ 3540 RPM 460 V 0944M

TORQUES (LB-FT): PO=147 PU=60.6 LR=76.3 LRA=223

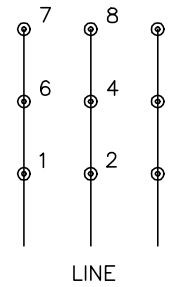




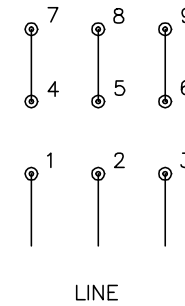
CD0180



LOW VOLTAGE
(2D)



HIGH VOLTAGE
(1D)



NOTES:

1. INTERCHANGE ANY TWO LINE LEADS TO REVERSE ROTATION.
2. OPTIONAL THERMOSTATS ARE PROVIDED WHEN SPECIFIED.
3. ACTUAL NUMBER OF INTERNAL PARALLEL CIRCUITS MAY BE A MULTIPLE OF THOSE SHOWN ABOVE.
4. LEAD COLORS ARE OPTIONAL. LEADS MUST ALWAYS BE NUMBERED AS SHOWN.

CD0180

REV. DESC: ADD CLASS CONN00000007		
REV. LTR: D	VERSION: 01	TDR: 000001099922
FILE: \AAA\00005\148	REVISED: 10: 25: 29 02/19/2019	BY: ENBRIRO
MTL: -	© □	

BALDOR - RELIANCE®

3PH, DV, 9 LEADS, DELTA CONNECTION

SH 1 of 1