



Customer information packet

ZDWNM3554T

1.5HP, 1770RPM, 3PH, 60HZ, 145TC, 3530M, TENV

Class - None

Division - Not Applicable

Specifications

Enclosure	TENV
Frame	145TC
Frame Material	Steel
Frequency	60.00 Hz
Motor Letter Type	Three Phase
Output @ Frequency	1.500 HP @ 60 HZ
Phase	3
Synchronous Speed @ Frequency	1800 RPM @ 60 HZ
Voltage @ Frequency	230.0 V @ 60 HZ 460.0 V @ 60 HZ
XP Class and Group	None
XP Division	Not Applicable
Agency Approvals	CSA UR
Ambient Temperature	40 °C
Auxillary Box	No Auxillary Box
Auxillary Box Lead Termination	None
Base Indicator	Rigid
Bearing Grease Type	Polyrex EM (-20F +300F)
Blower	None
Current @ Voltage	4.600 A @ 230.0 V 2.300 A @ 460.0 V
Design Code	B
Drip Cover	No Drip Cover
Duty Rating	CONT
Efficiency @ 100% Load	86.5 %
Electrically Isolated Bearing	Not Electrically Isolated
Feedback Device	ENCODER
Front Shaft Indicator	None
Heater Indicator	No Heater
High Voltage Full Load Amps	2.3 a
Insulation Class	H

Part detail

Revision	C
Type	AC
Mech. spec.	35RR179
Base	
Status	PRD/A
Elec. spec.	35WGG178
Layout	35LYRR179
Eff. date	06-22-2023
CD Diagram	CD0005
Poles	04
Leads	9#18
Proprietary	False
Created date	01-10-2022

Inverter Code	Not Inverter
KVA Code	M
Lifting Lugs	No Lifting Lugs
Locked Bearing Indicator	Locked Bearing
Max Speed	4500 rpm
Motor Lead Quantity/Wire Size	9 @ 18 AWG
Motor Lead Termination	Flying Leads
Motor Standards	NEMA
Motor Type	3530M
Mounting Arrangement	F1
Number of Poles	4
Overall Length	14.90 IN
Power Factor	72
Product Family	Wash Down
Pulley End Bearing Type	Sealed Bearing
Pulley Face Code	C-Face
Pulley Shaft Indicator	Standard
Rodent Screen	None
Service Factor	1.00
Shaft Diameter	0.875 IN
Shaft Ground Indicator	No Shaft Grounding
Shaft Rotation	Reversible
Shaft Slinger Indicator	Shaft Slinger
Speed	1770 rpm
Speed Code	Single Speed
Starting Method	Direct on line
Thermal Device - Bearing	None
Thermal Device - Winding	Normally Closed Thermostat
Vibration Sensor Indicator	No Vibration Sensor
Winding Thermal 1	None
Winding Thermal 2	None

Nameplate

NP1609L			
CAT NO	ZDWNM3554T		
SPEC.	35RR179G178G1		
FRAME	145TC	HP	1.5 TE
VOLTS	230/460		
MAG CUR	2.6/1.3	FLA	4.6/2.3
RPM	1770	RPM MAX	4500
HZ	60	PH	3 CLASS H
SER.F.	1.00	DES	B SL HZ 1
NEMA-NOM-EFF	86.5	WK2	0.217
BLWR V	PH	HZ	A
RATING	40C AMB-CONT		
DE BRG	6205	ODE BRG	6203
CC	010A	SER.NO	

AC Induction Motor Performance Data

Record # 87056

Typical performance - not guaranteed values

Winding: 35WGG178-R003		Type: 3530M	Enclosure: TENV	
Nameplate Data			460 V, 60 Hz: High Voltage Connection	
Rated Output (HP)	1.5	Full Load Torque	4.48 LB-FT	
Volts	230/460	Start Configuration	direct on line	
Full Load Amps	4.6/2.3	Breakdown Torque	21.02 LB-FT	
R.P.M.	1770	Pull-up Torque	12.29 LB-FT	
Hz	60 Phase	3	Locked-rotor Torque	14.9 LB-FT
NEMA Design Code	B KVA Code	M	Starting Current	21.32 A
Service Factor (S.F.)	1	No-load Current	1.29 A	
NEMA Nom. Eff.	86.5 Power Factor	72	Line-line Res. @ 25°C	10.1 Ω
Rating - Duty	40C AMB-CONT		Temp. Rise @ Rated Load	55°C
			Locked-rotor Power Factor	55.5
			Rotor inertia	0.217 lb-ft ²

Load Characteristics 460 V, 60 Hz, 1.5 HP

% of Rated Load	25	50	75	100	125	150
Power Factor	33	54	68	76	81	84
Efficiency	79.1	86.3	88.1	88.3	87.6	86.6
Speed	1790	1783	1776	1769	1761	1752
Line amperes	1.35	1.52	1.78	2.11	2.47	2.89

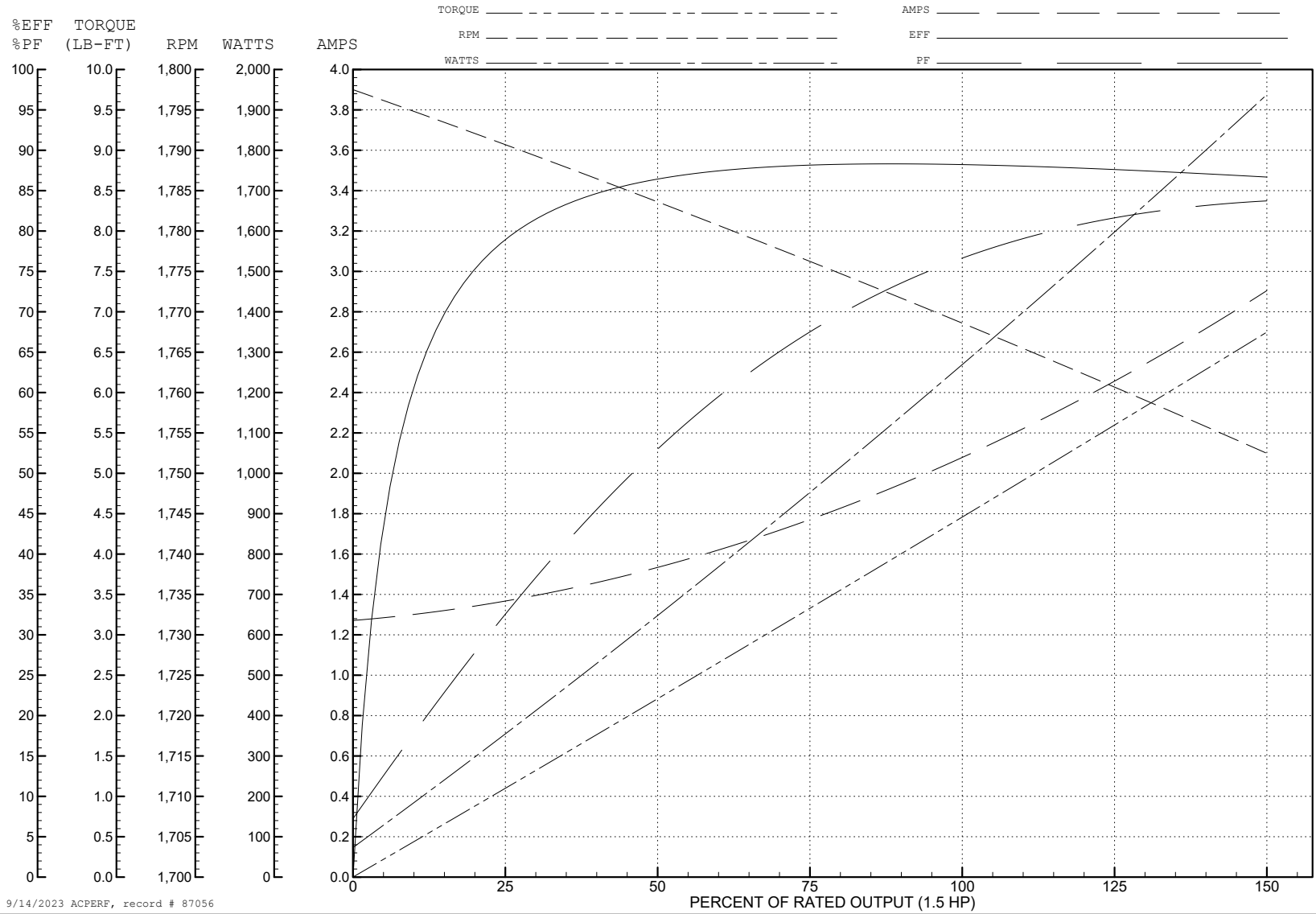
ABB Motors and Mechanical Inc.

WINDING # 35WGG178

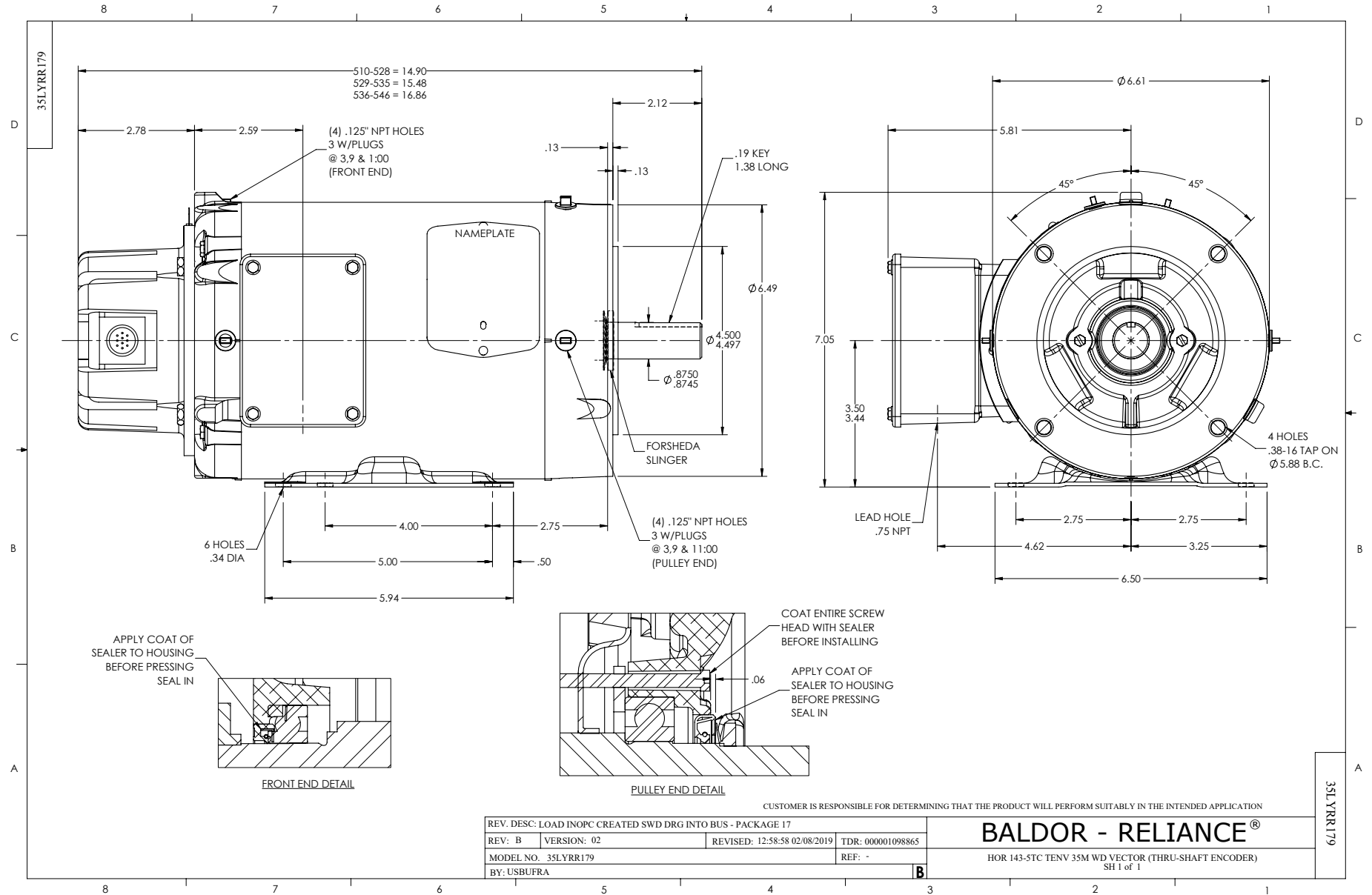
1.5 HP 3 PH 60 HZ 1770 RPM 460 V 3530M

Typical performance - not guaranteed values.

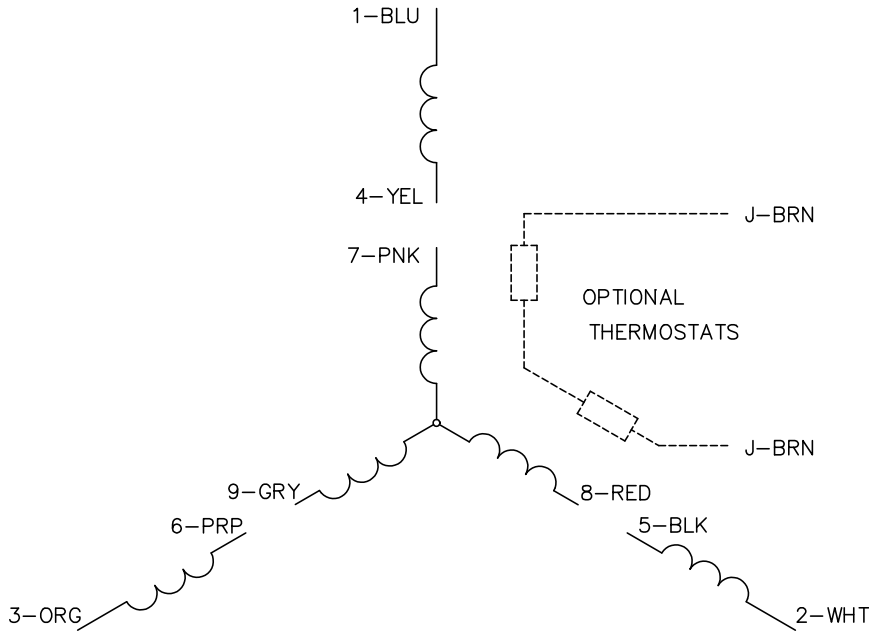
TORQUES (LB-FT): PO=21.02 PU=12.29 LR=14.9 LRA=21.32



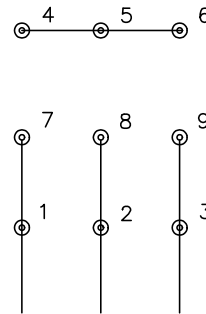
9/14/2023 ACPERF, record # 87056



CD0005

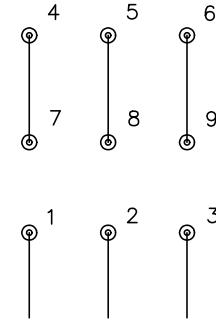


LOW VOLTAGE
(2Y)



LINE

HIGH VOLTAGE
(1Y)



LINE

NOTES:

1. INTERCHANGE ANY TWO LINE LEADS TO REVERSE ROTATION.
2. OPTIONAL THERMOSTATS ARE PROVIDED WHEN SPECIFIED.
3. ACTUAL NUMBER OF INTERNAL PARALLEL CIRCUITS MAY BE A MULTIPLE OF THOSE SHOWN ABOVE.
4. LEAD COLORS ARE OPTIONAL. LEADS MUST ALWAYS BE NUMBERED AS SHOWN.

CD0005

REV. DESC: REVISE TO SHOW OPTIONAL COLORS			
REV. LTR: E	BY: JLP	REVISED: 01/19/99 10:15	TDR: 0171435
S00000		FILE: AAA00005140	MDL: -
		MTL: -	

BALDOR ELECTRIC Co.

3PH, DV, 9 LEADS