



Customer information packet

ZDWNM3707T

5HP, 1770RPM, 3PH, 60HZ, 213TC, 3734M, TENV, F1

Class - None

Division - Not Applicable

Specifications

Enclosure	TENV
Frame	213TC
Frame Material	Steel
Frequency	60.00 Hz
Motor Letter Type	Three Phase
Output @ Frequency	5.000 HP @ 60 HZ
Phase	3
Synchronous Speed @ Frequency	1800 RPM @ 60 HZ
Voltage @ Frequency	230.0 V @ 60 HZ 460.0 V @ 60 HZ
XP Class and Group	None
XP Division	Not Applicable
Agency Approvals	UR CSA
Ambient Temperature	40 °C
Auxillary Box	No Auxillary Box
Auxillary Box Lead Termination	None
Base Indicator	Rigid
Bearing Grease Type	Polyrex EM (-20F +300F)
Blower	None
Current @ Voltage	12.400 A @ 230.0 V 6.200 A @ 460.0 V
Design Code	B
Drip Cover	No Drip Cover
Duty Rating	CONT
Efficiency @ 100% Load	89.5 %
Electrically Isolated Bearing	Not Electrically Isolated
Feedback Device	ENCODER
Front Shaft Indicator	None
Heater Indicator	No Heater
High Voltage Full Load Amps	6.2 a
Insulation Class	H

Part detail

Revision	A
Type	AC
Mech. spec.	37H311
Base	
Status	PRD/A
Elec. spec.	37WGR177
Layout	37LYH311
Eff. date	08-15-2022
CD Diagram	CD0005
Poles	04
Leads	9#14
Proprietary	False
Created date	11-19-2020

Inverter Code	Inverter Duty
KVA Code	J
Lifting Lugs	Standard Lifting Lugs
Locked Bearing Indicator	Locked Bearing
Max Speed	4000 rpm
Motor Lead Quantity/Wire Size	9 @ 14 AWG
Motor Lead Termination	Flying Leads
Motor Standards	NEMA
Motor Type	3734M
Mounting Arrangement	F1
Number of Poles	4
Overall Length	19.84 IN
Power Factor	82
Product Family	Wash Down
Pulley End Bearing Type	Sealed Bearing
Pulley Face Code	C-Face
Pulley Shaft Indicator	Standard
Rodent Screen	None
RoHS Status	ROHS COMPLIANT
Service Factor	1.00
Shaft Diameter	1.375 IN
Shaft Ground Indicator	No Shaft Grounding
Shaft Rotation	Reversible
Shaft Slinger Indicator	Shaft Slinger
Speed	1770 rpm
Speed Code	Single Speed
Starting Method	Direct on line
Thermal Device - Bearing	None
Thermal Device - Winding	Normally Closed Thermostat
Vibration Sensor Indicator	No Vibration Sensor
Winding Thermal 1	None
Winding Thermal 2	None

Nameplate

NP1609L					
CAT NO	ZDWNM3707T				
SPEC.	37H311R177Z2				
FRAME	213TC	HP	5 TE		
VOLTS	230/460				
MAG CUR	5.8/2.9	FLA	12.4/6.2		
RPM	1770	RPM MAX	4000		
HZ	60	PH	3	CLASS	H
SER.F.	1.00	DES	B	SL HZ	1.2
NEMA-NOM-EFF	89.5	WK2	0.836		
BLWR V	PH	HZ	A		
RATING	40C AMB-CONT				
DE BRG	6307	ODE BRG	6206		
CC	010A	SER.NO			

AC Induction Motor Performance Data

Record # 85505

Typical performance - not guaranteed values

Winding: 37WGR177-R007		Type: 3734M	Enclosure: TENV	
Nameplate Data			460 V, 60 Hz: High Voltage Connection	
Rated Output (HP)	5	Full Load Torque	14.76 LB-FT	
Volts	230/460	Start Configuration	direct on line	
Full Load Amps	12.4/6.2	Breakdown Torque	47.48 LB-FT	
R.P.M.	1770	Pull-up Torque	22.38 LB-FT	
Hz	60 Phase	Locked-rotor Torque	28.3 LB-FT	
NEMA Design Code	B KVA Code	Starting Current	49.16 A	
Service Factor (S.F.)	1	No-load Current	2.83 A	
NEMA Nom. Eff.	89.5 Power Factor	Line-line Res. @ 25°C	2.12 Ω	
Rating - Duty	40C AMB-CONT	Temp. Rise @ Rated Load	56°C	
		Locked-rotor Power Factor	37.5	
		Rotor inertia	0.836 lb-ft ²	

Load Characteristics 460 V, 60 Hz, 5 HP

% of Rated Load	25	50	75	100	125	150
Power Factor	41	64	77	83	85	85
Efficiency	86.4	90.8	91.4	91.3	90.7	89.3
Speed	1793	1787	1779	1772	1762	1753
Line amperes	3.28	3.99	5	6.18	7.6	9.19

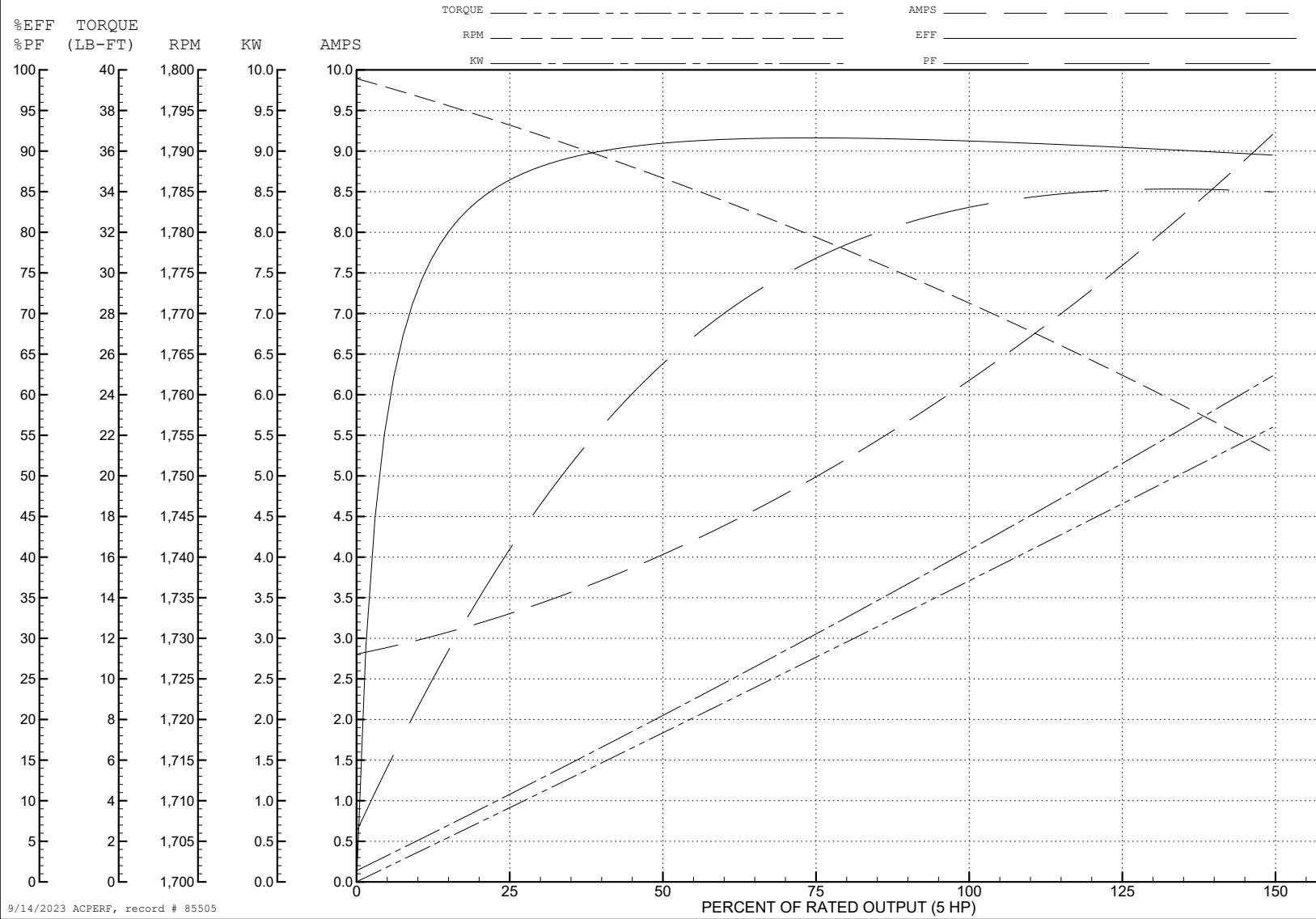
ABB Motors and Mechanical Inc.

WINDING # 37WGR177

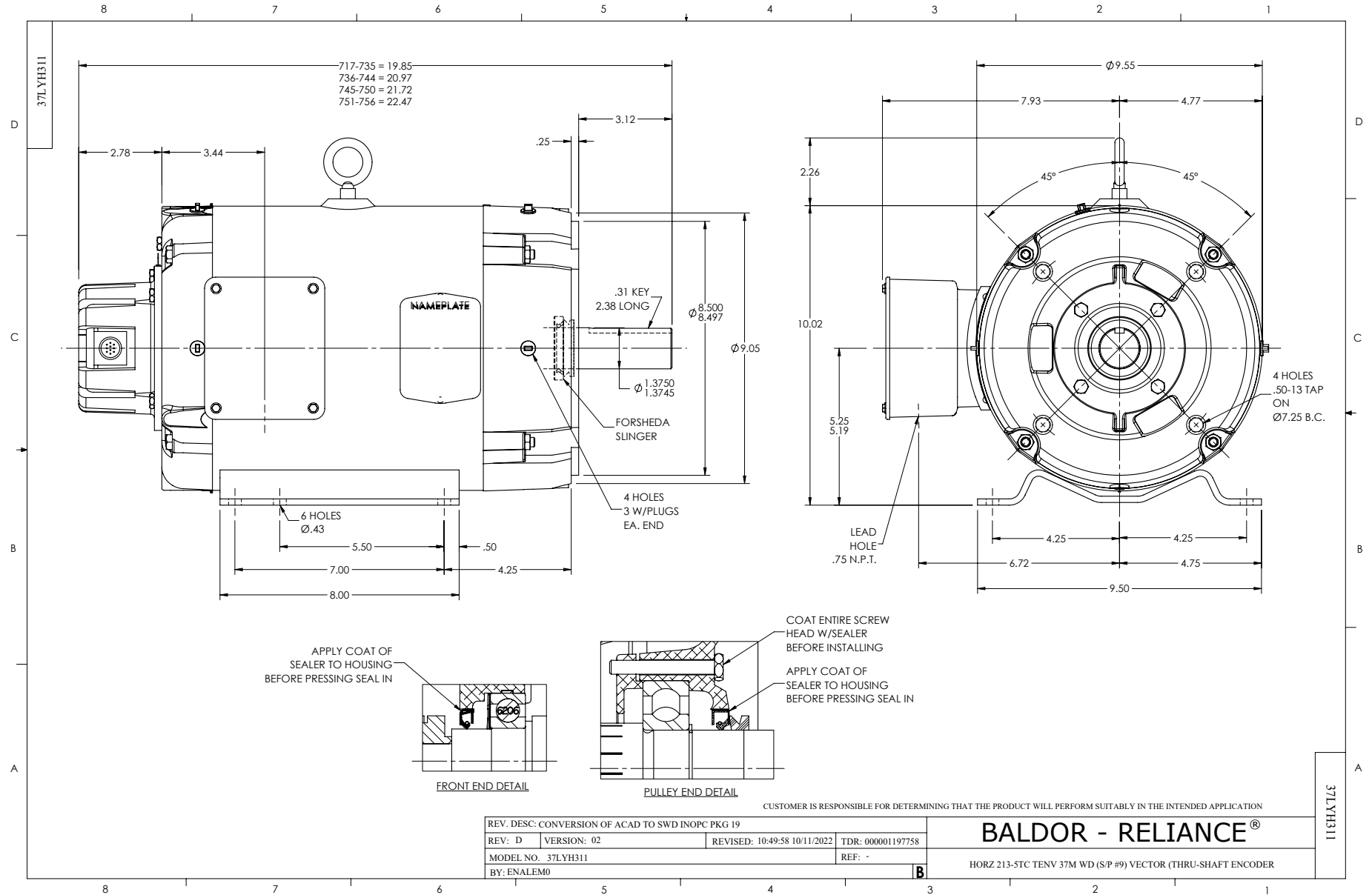
5 HP 3 PH 60 HZ 1770 RPM 460 V 3734M

Typical performance - not guaranteed values.

TORQUES (LB-FT): PO=47.48 PU=22.38 LR=28.3 LRA=49.16



9/14/2023 ACPERF, record # 85505



CD0005

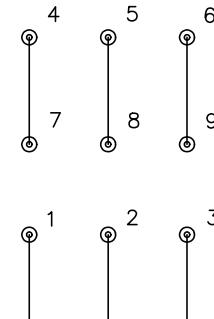


LOW VOLTAGE
(2Y)



LINE

HIGH VOLTAGE
(1Y)



LINE

NOTES:

1. INTERCHANGE ANY TWO LINE LEADS TO REVERSE ROTATION.
2. OPTIONAL THERMOSTATS ARE PROVIDED WHEN SPECIFIED.
3. ACTUAL NUMBER OF INTERNAL PARALLEL CIRCUITS MAY BE A MULTIPLE OF THOSE SHOWN ABOVE.
4. LEAD COLORS ARE OPTIONAL. LEADS MUST ALWAYS BE NUMBERED AS SHOWN.

CD0005

REV. DESC: REVISE TO SHOW OPTIONAL COLORS			
REV. LTR: E	BY: JLP	REVISED: 01/19/99 10:15	TDR: 0171435
S00000		FILE: AAA00005140	MDL: -
		MTL: -	

BALDOR ELECTRIC Co.

3PH, DV, 9 LEADS