

**BALDOR® • RELIANCE** 

**Product Information Packet**

**IDBRPM403004**

**300HP,1785RPM,3PH,N/AHZ,L4046,TEBC,FOOT,**

Part Detail							
Revision:	A	Status:	INA/A	Change #:		Proprietary:	No
Type:	AC	Elec. Spec:	L0091A	CD Diagram:	422927-001	Mfg Plant:	
Mech. Spec:		Layout:	609994-001	Poles:	04	Created Date:	04-10-2015
Base:		Eff. Date:	08-03-2018	Leads:			

Specs			
Catalog Number:	IDBRPM403004		
Enclosure:	TEBC		
Frame:	L4046		
Frame Material:	Exposed Laminations		
Output @ Frequency:	300.000 HP @ 60 HZ		
Synchronous Speed @ Frequency:	1800 RPM @ 60 HZ		
Voltage @ Frequency:	460.0 V @ 60 HZ		
Agency Approvals:	CCSA US		
	UR		
Auxillary Box:	No Auxillary Box		
Base Indicator:	Rigid		
Bearing Grease Type:	Polyrex EM (-20F +300F)		
Current @ Voltage:	346.000 A @ 460.0 V		
Duty Rating:	CONT		
Feedback Device:	NO FEEDBACK		
Frame Prefix:	L		
Heater Indicator:	No Heater		
Insulation Class:	H		

<b>Mounting Arrangement:</b>	F3		
<b>Product Family:</b>	General Industrial		
<b>Pulley End Bearing Type:</b>	Ball		
<b>Pulley Face Code:</b>	Standard		
<b>Shaft Ground Indicator:</b>	No Shaft Grounding		
<b>Shaft Rotation:</b>	Reversible		
<b>Motor Standards:</b>	NEMA		
<b>Thermal Device - Bearing:</b>	None		
<b>Thermal Device - Winding:</b>	Normally Closed Thermostat		

Nameplate 000613006NN										
	<b>DUTY</b>	<b>HP</b>	<b>RPM</b>	<b>AMPS</b>	<b>VOLTS</b>	<b>HZ</b>				
	CONT	300	1785	346	460	60				
	CONT	300	3570	347	460	120				
<b>CAT.NO.</b>				<b>SPEC. NO.</b>	P40L0203					
<b>SER.NO.</b>				<b>FR</b>	L 4046		<b>INSUL</b>	H		
<b>PH.</b>	3		<b>MAX SAFE SPEED</b>	3750		<b>AMB.</b>	40		<b>MIN. AMB.</b>	-25
<b>DESIGN NO.</b>	L0091A		<b>TYPE</b>			<b>ENCL.</b>	TEAO-BC			
<b>S.F.</b>	1.0		<b>D.E. BRG.</b>	65BC03J30X						
<b>ENCL MOD</b>			<b>O.D.E. BRG.</b>	65BC03J30X						

Parts List		
Part Number	Description	Quantity
WS286626	WS P40L0203	1.000 EA
RA282834	RA P40L0203	1.000 EA
000613006NN	RPM AC WITH CERTIFIED LOGOS	1.000 EA
000692000FP	NP, WARNING LIFT INSTRUCTIONS	1.000 EA
418057747A	METAL FASTENER	8.000 EA
000692000NH	LABEL DIRECTION AIR FL	1.000 EA
000692000VD	LABEL WARNING	1.000 EA
422927001	C/D LABEL	1.000 EA
036000012HB	HHCS M6X12MM LONG PLATED	3.000 EA
036610008AB	METRIC LCKW M6 PLTD-G508	3.000 EA
604979002C	THERMBR - 440	1.000 EA
004824015A	GREASE POLYREX EM	0.900 LB
034693001AB	PPLG - G508- use 034692001AB	1.000 EA
034693001AB	PPLG - G508- use 034692001AB	1.000 EA
035000001A	ALFTG 1/8" 1610-BL	1.000 EA
035000001BB	GREASE FTG,GRS.IN	1.000 EA
036000016JB	HHCS M8-1.25X16MMPLTD-250	3.000 EA
036000020JB	HHCS M8-1.25X20L PLTD-250	3.000 EA
036100070KA	METRIC HSHCS	3.000 EA
036100080KA	M10-1.50X 80MM HXSOCHDCS	3.000 EA
036140001E	EYEBOLT	2.000 EA
036500013AB	HX NUT,ODE BRKT	4.000 EA
036500013AB	HX NUT,ODE BRKT	4.000 EA
036610009AB	MHSLW M8 SPL.PLTD-G508- BS	3.000 EA

Parts List (continued)		
Part Number	Description	Quantity
400638001AD	WAVEN - 400 (Customer number 43699)	1.000 EA
418150003A	GREASE FITTING CAP	2.000 EA
609830005AZ	TBOLT L4046	4.000 EA
702622008A	GRILL, PAINTED 440	1.000 EA
702623001E	THERMAL BARRIER 440 SUB PAINT	1.000 EA
702663002R	FAN 440 702663002A	1.000 EA
804812002A	BRKT,ODE,L400	1.000 EA
804813002A	BRKT,L400	1.000 EA
000613006NT	NAME PLATE IEC	1.000 EA
032018006CK	HHCS 3/8-16X3/4L PLATED	4.000 EA
034017014AB	LCKW 3/8 STD. PLATED	4.000 EA
036000012JB	M8-1.25 X 12MM HXHDC	3.000 EA
036000016JB	HHCS M8-1.25X16MMPLTD-250	4.000 EA
036000016KB	HHCSM10-1.5X16MM PLTD-280	4.000 EA
036000016KF	HHCS M10 16MM BRASS	2.000 EA
036000045JB	M8-1.25 X 45MM HXHCS	4.000 EA
036620009AB	M8 EXTERNAL LK WASHER	3.000 EA
410978010D	INLET SCREEN	1.000 EA
410978014A	INLET SCREEN	1.000 EA
415000103F	TLUG	1.000 EA
417733004E	GASKT	1.000 EA
417733004D	GASKET CONDUIT BOX	2.000 EA
418014004A	ADAPT 418014-4WCA	1.000 EA
418014004A	ADAPT 418014-4WCA	1.000 EA

Product Information Packet: IDBRPM403004 - 300HP,1785RPM,3PH,N/AHZ,L4046,TEBC,FOOT,

418018074A	GROUND LABEL G100 METRIC 160 D.C.	3.000 EA
610490001AF	1.5HP,3450//2850RPM,3PH,60//50HZ,56C,352	1.000 EA
611917002J	GASKET, NEOPRENE	1.000 EA
611965001A	WHEEL, BLOWER	1.000 EA
706305020A	GUARD, SHAFT	1.000 EA
706310003R	CBOX MILL ENG/METRIC	1.000 EA
036000050JB	M8-1,25 X 50 MHHCS	4.000 EA
706313052A	BLOWER SCROLL	1.000 EA
804816001A	COVER L400 AC FAN CVR	1.000 EA
000640000P	TAG WINDING THERMOST	1.000 EA
004824007K	SPECIAL PAINT	0.300 EA
034180024HA	KEY 5/8X5/8X3 L	1.000 EA

REL. S. O. -  
 FRAME I4046  
 HP 300  
 BASE SPEED 1785  
 PHASE/HERTZ 3/60

VOLTS 460  
 AMPS 336.4  
 DUTY CONT 1.0  
 S.F. P.F. @NL/FL .04/.89  
 AMB °C/INSUL 40/H WK<sup>2</sup> (LB-FL<sup>2</sup>) 90

ENCLOSURE TEBC  
 MAX SAFE RPM 3750  
 IM (AMPS) 106.7  
 P.F. @NL/FL .04/.89  
 WR<sup>2</sup> (LB-FL<sup>2</sup>) 90

WYE CONN EQ CKT OHMS PER PHASE  
 (AT BASE RATING, 25 °C)  
 R1 .00574 X1 .0588  
 R2 .00449 X2 .0834  
 XM 2.48

**RATED FULL LOAD DATA**


	RPM	HP	TORQUE LB-FT	FUND VOLTS	FREQ-HZ	AMPS
BASE SPEED	1787	300	882	460	60	336
MAX SPEED	3570	300	441	460	120	340
MIN SPEED	0	0	882	5.71	.447	336

**LOAD PERFORMANCE AT BASE SPEED**

	RPM	HP	TORQUE LB-FT	FUND VOLTS	FREQ-HZ	AMPS
NO LOAD	1800	0	0	460	60	1.05
1/4	1797	75.0	219	460	60	1.34
1/2	1794	150	439	460	60	1.91
3/4	1790	225	661	460	60	2.62
FULL LOAD	1787	300	882	460	60	3.36
O/L	1779	448	1323	460	60	4.95

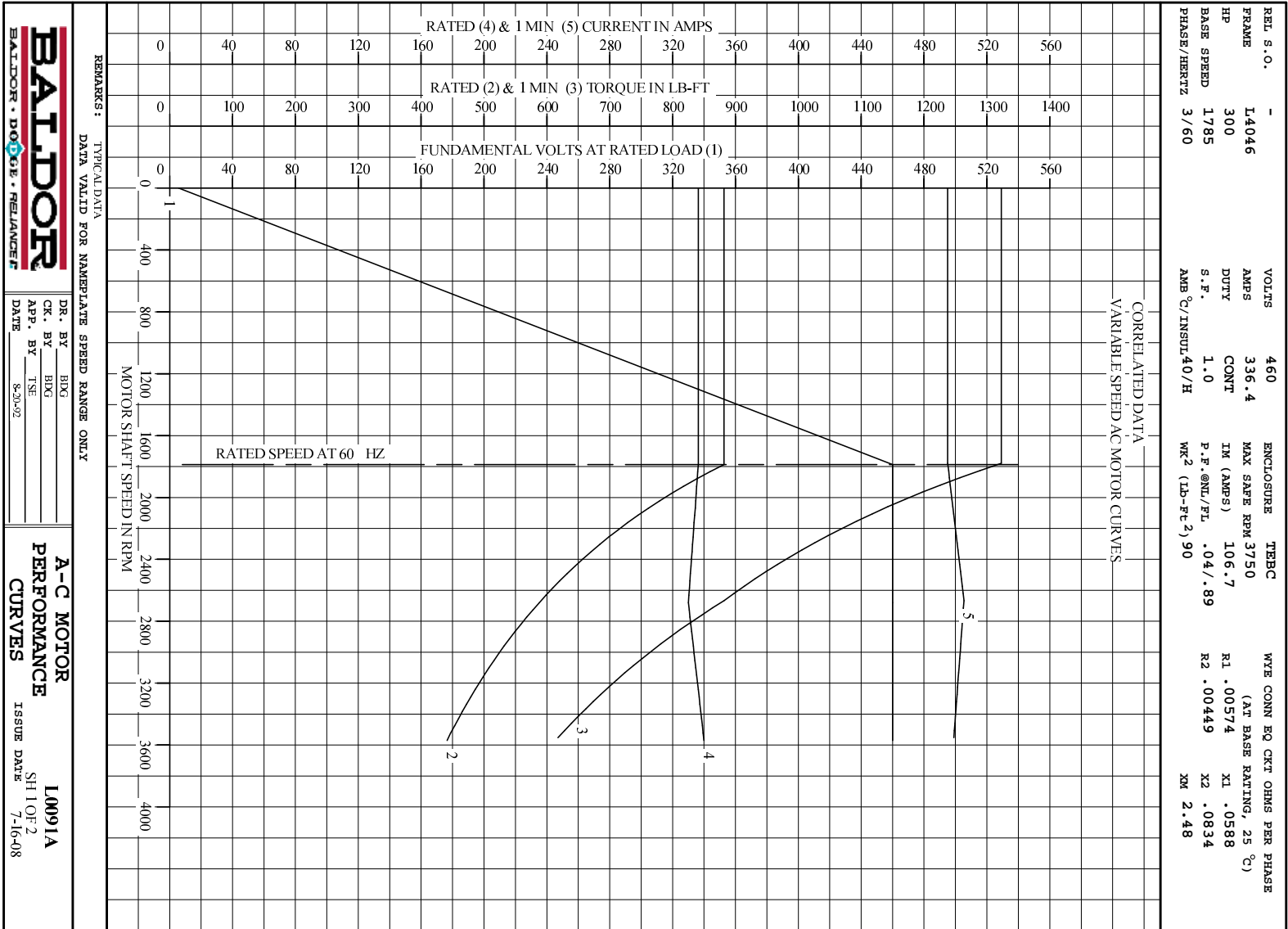
BLOWER DATA	VOLTS	PH/HZ	FL AMPS	LR AMPS	FRAME	CFM

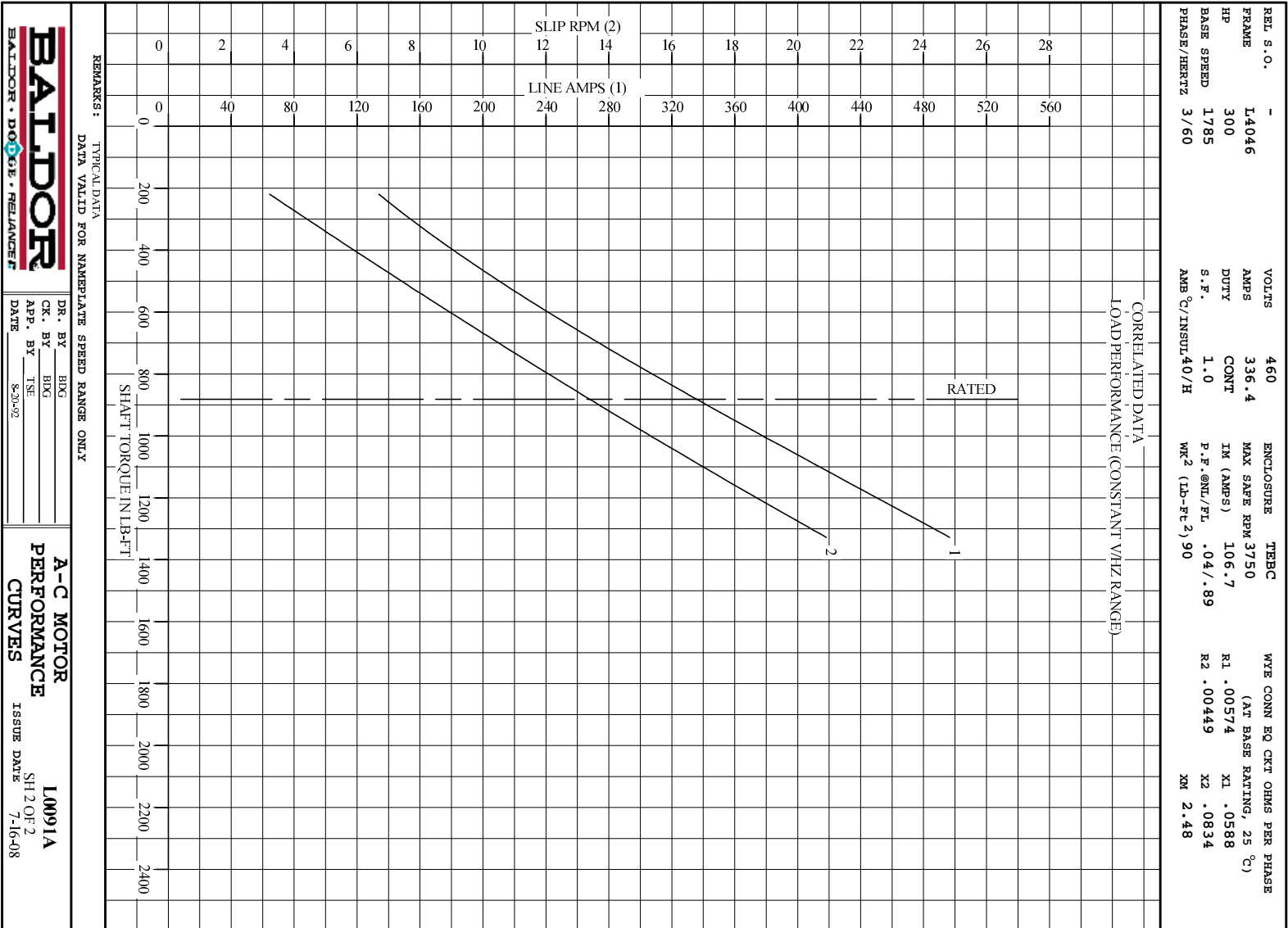
REMARKS: TYPICAL DATA  
 CORRELATED DATA

	DR. BY	BIDG	<b>A-C MOTOR                  PERFORMANCE                  DATA</b>
	CK. BY	BIDG	
	APP. BY	TSE	I0091A ISSUE DATE 7-16-08
	DATE	8-20-92	



1





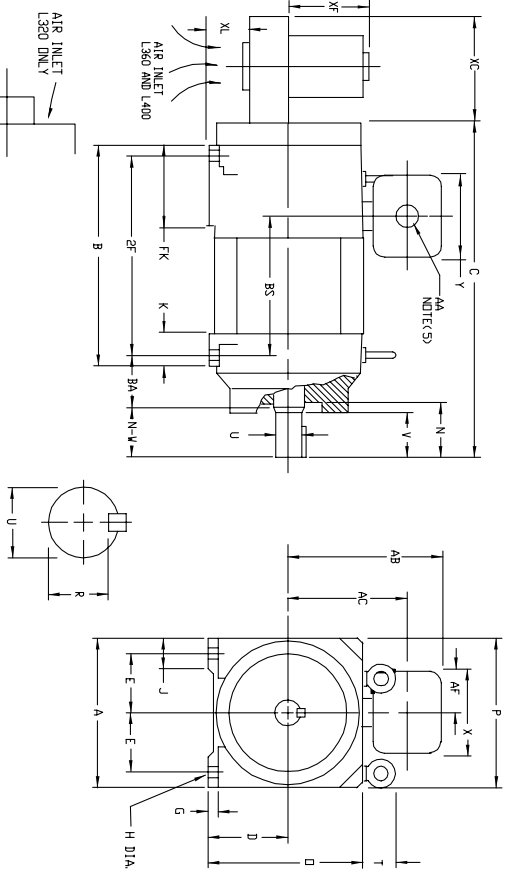
**BALDOR**  
BALDOR • DOUGLASS • RELIANCE

DR. BY \_\_\_\_\_  
CK. BY \_\_\_\_\_  
APP. BY \_\_\_\_\_  
DATE \_\_\_\_\_

**A-C MOTOR**  
**PERFORMANCE**  
**CURVES**  
**L0091A**  
SH 2 OF 2  
ISSUE DATE 7-16-08

609994-001

VARIABLE SPEED ALTERNATING CURRENT MOTORS  
RPM AC  
ENCLOSURE: TOTALLY ENCLOSED MOUNTING:FOOT  
FRAMES L3281 THRU UL4046  
COOLING: FAN COOLED BLOWER COOLED AIR-OVER INLINE



FRAME	DRIVE	C	B	BS	2F	N	N-V	UK2	V	RK37	SO.	LGTH.	XL	XC	XF	WT. LBS.
L3281	(4)	38.25	22.25	15.12	20.25	5.50	5.25	2.625	5.00	2.275	.625	4.00	1.69	---	---	840
L3292	(4)	41.00	25.00	17.88	23.00	5.50	5.25	2.625	5.00	2.275	.625	4.00	1.69	---	---	990
L3699	COUPLED	35.75	27.00	19.25	24.75	5.19	4.75	2.375	4.50	2.021	.625	3.00	5.19	10.12	7.00	1175
UL3699	BELTED	37.50	27.00	19.25	24.75	6.94	6.25	3.375	6.25	2.880	.875	5.00	5.19	10.12	7.00	1225
L3607	COUPLED	37.50	29.00	21.25	26.75	5.19	4.75	2.375	4.50	2.021	.625	3.00	5.19	10.12	7.00	1400
UL3607	BELTED	39.50	29.00	21.25	27.75	5.19	4.75	2.375	4.50	2.021	.625	3.00	5.19	10.12	7.00	1575
UL3698	BELTED	40.50	30.00	22.25	27.75	6.94	6.25	3.375	6.25	2.880	.875	5.00	5.19	10.12	7.00	1575
UL3614	COUPLED	42.75	34.00	26.25	31.75	5.19	4.75	2.375	4.50	2.021	.625	3.00	5.19	10.12	7.00	1700
UL3614	BELTED	44.50	34.00	26.25	31.75	6.94	6.25	3.375	6.25	2.880	.875	5.00	5.19	10.12	7.00	1750
UL4022	COUPLED	42.12	33.00	24.38	30.50	4.56	4.75	2.375	4.50	2.021	.625	3.00	5.69	12.00	10.31	1750
UL4022	BELTED	45.88	33.00	24.38	30.50	8.31	8.50	3.875	8.25	3.309	1.00	6.88	5.69	12.00	10.31	1800
UL4034	COUPLED	45.12	36.00	27.38	33.50	4.56	4.75	2.375	4.50	2.021	.625	3.00	5.69	12.00	10.31	2150
UL4034	BELTED	48.88	36.00	27.38	33.50	8.31	8.50	3.875	8.25	3.309	1.00	6.88	5.69	12.00	10.31	2200
UL4046	COUPLED	48.12	39.00	30.38	36.50	4.56	4.75	2.375	4.50	2.021	.625	3.00	5.69	12.00	10.31	2450
UL4046	BELTED	51.88	39.00	30.38	36.50	8.31	8.50	3.875	8.25	3.309	1.00	6.88	5.69	12.00	10.31	2500

- (1) 'D' DIMENSION WILL NOT BE EXCEEDED. SHIMS UP TO .03 INCHES IN THICKNESS
  - (2) ARE USUALLY REQUIRED FOR COUPLED OR GEARED MACHINES.
  - (3) 'R' MARKS --- 4.00 - 5.00
  - (4) METHOD OF DRIVE COUPLED OR BELTED
  - (5) FOR TERMINAL BOX DIMENSIONS AA, AB, AC, AF, X & Y REFER TO BOX DIMS. STD. 609994-1, IEC 60999-7, IEC 60999-9, IEC 60999-10.
  - (6) DIMEN. ASSOCIATED FOR BLOWER COOLING ONLY.
- SHAFT OR DRIVE END DIMS NOT MOUNTED IN REAR ON AIR INLET TERMINAL BOX CAN BE ROTATED IN 90 DEG. INCREMENTS. TERMINAL BOX CAN BE LOCATED ON SIDE IN F1 OR F2 MOTOR WEIGHT MAY VARY SLSZ. FOR NON-STANDARD RATINGS AND/OR ACCESSORIES. IF MOUNTING CLEARANCE DETAILS ARE REQUIRED, CONSULT FACTORY.

FRAME \_\_\_\_\_ TYPE \_\_\_\_\_ ITEM \_\_\_\_\_ HP \_\_\_\_\_ RPM \_\_\_\_\_ PH \_\_\_\_\_ HZ \_\_\_\_\_ VOLTS \_\_\_\_\_  
 ORDER \_\_\_\_\_ SALES ORDER \_\_\_\_\_ APPROVED BY \_\_\_\_\_ DATE \_\_\_\_\_  
 100-466609

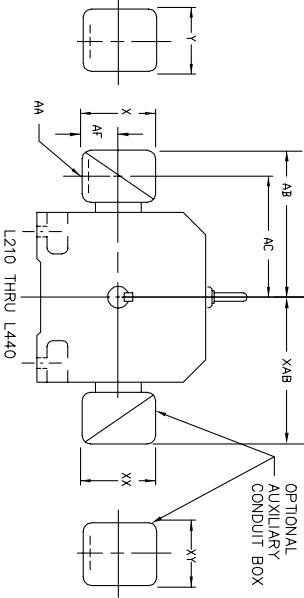
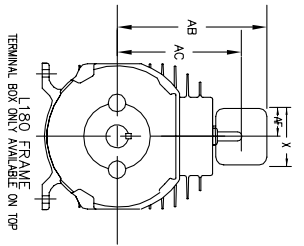
CUSTOMER IS RESPONSIBLE FOR DETERMINING THAT BALDOR'S PRODUCT WILL PERFORM SUITABLY IN THE INTENDED APPLICATION.

REV. DESC: ASSIGNED TO BUSLOAD	VERSION: 00	TDR: 000000486619	<b>Baldor • Dodge • Reliance</b>
REV. LTR: -	REVISED: 10:17:16 01/08/2009	BY: CONBAT	
FILE: \RGG\00003\660	DIM SHT L3281 THRU UL4046 RPM AC TEFC & BC AO INLINE FT MTG		

SH 1 of 1

# RPM AC INDUSTRIAL ALTERNATING CURRENT MOTORS

STEEL, CAST IRON, MILL AND TERMINAL BOARD CONDUIT BOX DIMENSIONS  
NEMA FRAMES L180 thru L440 and IEC FRAMES DL112 thru DL280



DIMENSIONS ARE IN INCHES (mm)

STEEL TERMINAL BOX DIMENSIONS (MAXIMUM)						CAST IRON TERMINAL BOX DIMENSIONS (MAXIMUM)					
FRAME SIZE	MAX AMPS	AK(1)	AB	AC	AF	STANDARD SIZE	MAX AMPS	AK(2)	AB	AC	AF
L180	40	1.38	8.62	6.94	2.25	4.50	5.00	706320-3-A			
L210	75	2.12	9.38	7.50	2.81	5.62	6.12	706320-5-A			
L230	160	2.12	9.38	7.50	2.81	5.62	6.12	706320-5-A			
L250	305	4	14.62	10.50	5.38	10.56	9.00	706320-9-A & D			
L280	500	5	18.38	13.25	6.50	12.10	14.62	706320-16-A & D			
L320	160	2	13.75	10.63	4.25	8.44	7.63	706320-5-A & D			
L360	305	4	19.50	14.31	6.50	12.10	14.62	706320-16-A & D			
L400	500	5	25.00	18.88	8.44	16.25	18.50	706320-16-A & D			
L440	500	5	22.00	16.88	6.50	12.10	14.62	706320-16-A & D			
L180	60	1	9.38	7.50	2.50	5.00	5.75	706320-4-C			
L210	140	3	14.25	10.50	3.62	8.00	9.25	706320-12-B			
L230	210	4	15.62	11.38	4.12	9.50	10.50	706320-13-A			
L250	510	5	18.50	13.25	7.00	12.75	15.00	706320-14-D			
L280	140	3	15.38	11.50	3.62	8.00	9.25	706320-12-B			
L320	210	4	16.62	12.44	4.12	9.50	10.50	706320-13-A			
L360	510	5	19.62	14.31	7.00	12.75	15.00	706320-14-D			
L400	140	3	15.50	11.75	3.62	8.00	9.25	706320-12-B			
L440	210	4	16.88	12.62	4.12	9.50	10.50	706320-13-A			
L210	210	4	17.12	12.88	4.12	9.50	10.50	706320-13-A			
L230	210	4	17.12	12.88	4.12	9.50	10.50	706320-13-A			
L250	510	5	21.12	15.88	7.00	12.75	15.00	706320-14-D			
L360	140	3	16.75	13.00	3.62	8.00	9.25	706320-12-B			
L400	210	4	18.12	13.88	4.12	9.50	10.50	706320-13-A			
L440	510	5	22.12	16.88	7.00	12.75	15.00	706320-14-D			

MILL CONDUIT BOX DIMENSIONS (MAXIMUM)					
FRAME SIZE	AMPS	AA	AB	AC	AF
L210	160	(3)	10.78	8.41	3.50
L230	160	(3)	11.84	9.47	3.50
L280	160	(3)	12.75	10.75	3.50
L320	590	(3)	14.75	11.34	4.50
L360	590	(3)	15.47	12.06	4.50
L400	590	(3)	16.47	13.06	4.50
L440	590	(3)	18.00	15.00	4.50
L440	1260	(3)	27.38	19.88	6.06

IEC CONDUIT BOX DIMENSIONS WITH TERMINAL BOARDS (MAXIMUM)											
FRAME NEMA/IEC	AMPS	AA	AB (mm)	AC (mm)	AF (mm)	X (mm)	Y (mm)	PART NUMBER	PART NUMBER	PART NUMBER	PART NUMBER
L180/UL112	85	<4>	9.38(239)	7.50(191)	2.81(72)	5.62(143)	6.12(156)	706320-5-A or 4-C	706320-5-A or 4-C	706320-5-A or 4-C	706320-5-A or 4-C
L210/UL132	100	--	10.77(274)	9.04(230)	3.74(95)	7.48(190)	7.48(190)	706310-56-A	706310-56-A	706310-225-R	706310-225-R
L230/UL160	160	--	11.63(296)	9.62(245)	4.41(112)	8.82(224)	8.82(224)	706310-56-B	706310-56-B	706310-225-R	706310-225-R
L250/UL160	100	--	12.09(307)	10.36(264)	3.74(95)	7.48(190)	7.48(190)	706310-56-A	706310-56-A	706310-225-R	706310-225-R
L280/UL180	160	--	13.58(344)	11.57(294)	4.41(112)	8.82(224)	8.82(224)	706310-56-B	706310-56-B	706310-225-R	706310-225-R
L320/UL200	400	--	19.09(485)	14.37(365)	6.20(158)	14.39(366)	14.39(366)	706310-63-B	706310-63-B	706310-63-B	706310-63-B
L360/UL230	800	--	20.06(510)	17.53(446)	6.20(158)	14.39(366)	14.39(366)	706310-63-B	706310-63-B	706310-63-B	706310-63-B
L400/UL250	800	--	20.78(528)	18.25(464)	6.20(158)	14.39(366)	14.39(366)	706310-63-B	706310-63-B	706310-63-B	706310-63-B
L440/UL280	1260	--	25.94(659)	18.44(468)	6.06(154)	18.50(470)	18.50(470)	706310-63-E	706310-63-E	706310-63-E	706310-63-E
L440/UL280	1260	--	27.38(696)	19.88(505)	6.06(154)	18.50(470)	18.50(470)	706310-63-E	706310-63-E	706310-63-E	706310-63-E
L440/UL280	1300	--	30.38(772)	21.38(543)	12.44(316)	24.00(610)	24.00(610)	706310-360-A	706310-360-A	706310-360-A	706310-360-A

DEPT. AUXILIARY CONDUIT BOX DIMENSIONS (MAXIMUM)											
FRAME SIZE	XY	YAB	XY	PART NUMBER	FRAME SIZE	XY	YAB	XY	XY	XY	PART NUMBER
L210/UL132	7.48	4.25	4.25	602007-56-A	L210/UL132	10.88	8.00	8.00	8.00	8.00	706310-3-B
L230/UL160	8.44	4.25	4.25	602007-56-A	L230/UL160	11.88	8.00	8.00	8.00	8.00	706310-3-B
L280/UL180	9.12	4.25	4.25	602007-56-A	L280/UL180	12.62	8.00	8.00	8.00	8.00	706310-3-B
L320/UL200	10.00	4.25	4.25	602007-56-A	L320/UL200	13.50	8.00	8.00	8.00	8.00	706310-3-B
L360/UL225	11.00	4.25	4.25	602007-56-A	L360/UL225	14.50	8.00	8.00	8.00	8.00	706310-3-B
L400/UL250	12.00	4.25	4.25	602007-56-A	L400/UL250	15.50	8.00	8.00	8.00	8.00	706310-3-B
L440/UL280	13.12	4.25	4.25	602007-56-A	L440/UL280	16.62	8.00	8.00	8.00	8.00	706310-3-B

(1) \*AF CONDUIT.  
(2) \*AF PIPE TAP.  
(3) \*CUSTOMER TO PROVIDE  
(4) 2" DN -5A or 1" TAP DN -4C  
CONDUIT BOX CAN BE ROTATED  
360°. CONDUIT BOX MAY BE  
LOCATED FL, F2 OR F3 AS  
SPECIFIED

100-6671919

CUSTOMER IS RESPONSIBLE FOR DETERMINING THAT BALDOR'S PRODUCT WILL PERFORM SUITABLY IN THE INTENDED APPLICATION.

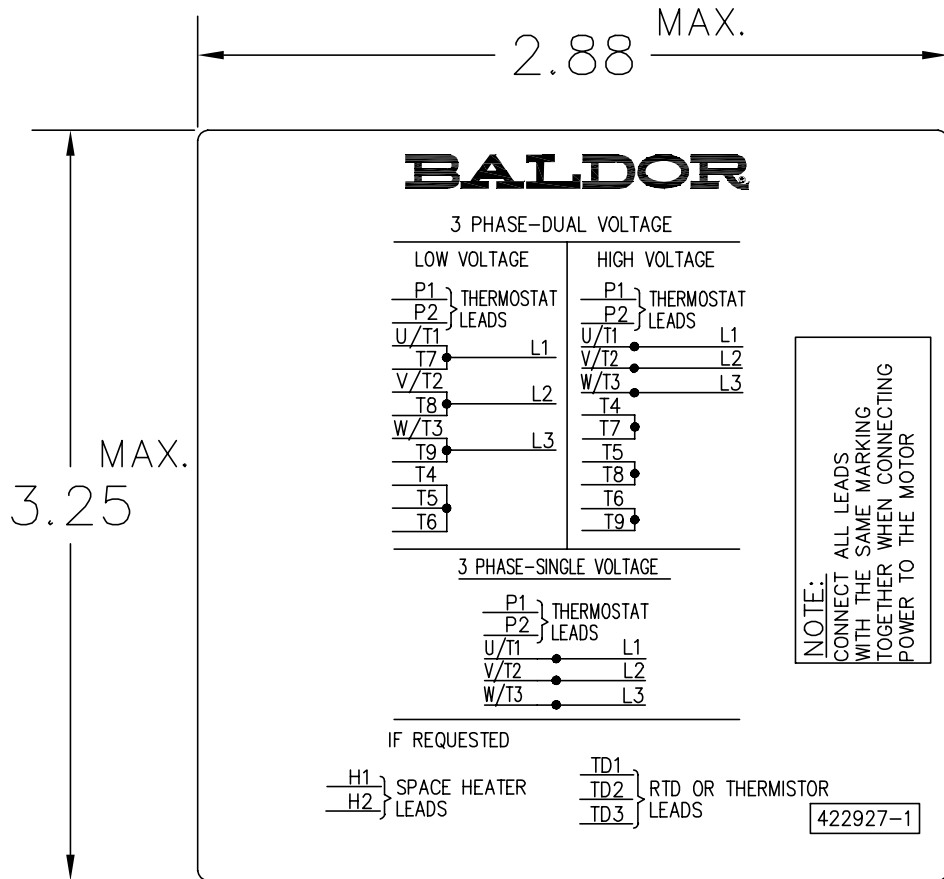
REV. DESC: ADD 1260 AMP L400, ADD 1300 AMP L440	TDR: 000000B04459
REV. LTR: A	VERSION: 01
FILE: \RGG\00003\688	REVISED: 10: 23: 58 06/18/2013
MTL: -	BY: RGGWT



DIM SHT NEMA L180 THRU L440 & IEC DL112 THRU DL280

SH 1 of 1

422927-001



NOTE:  
DATA TO BE SIZED  
SO THAT IT FITS INTO  
MATERIAL DECAL  
DIMENSIONS. MAKE  
LETTERS & NUMBERS  
AS LARGE AS POSSIBLE.

MATERIAL: CERAMATIC DGF-P4  
PERMA GRIP ADHESIVE

ALL LETTERS, NUMBERS  
AND LINES TO BE BLACK  
ON WHITE BACKGROUND.

422927-001

REV. DESC: CHANGE BACKGROUND COLOR FROM GOLD TO WHITE		
REV. LTR: B	VERSION: 02	TDR: 000000788708
FILE: \RGG\00000\203	REVISED: 08:09:29 03/04/2013	
MTL: -	BY: RGGWT	

**BALDOR**

EXTERNAL CONNECTION LABEL

SH 1 of 1

Marketing maintained PDF of MN406:

<http://www.baldor.com/support/Literature/Load.ashx/MN406?ManNumber=MN406>