

**BALDOR® • RELIANCE** 

**Product Information Packet**

**IDCSWDM3542**

**.75HP,1745RPM,3PH,60HZ,56C,3518M,TENV,F1**

| Part Detail |        |             |            |             |        |               |            |
|-------------|--------|-------------|------------|-------------|--------|---------------|------------|
| Revision:   | U      | Status:     | PRD/A      | Change #:   |        | Proprietary:  | No         |
| Type:       | AC     | Elec. Spec: | 35WGP559   | CD Diagram: | CD0005 | Mfg Plant:    |            |
| Mech. Spec: | 35S638 | Layout:     | 35LYS638   | Poles:      | 04     | Created Date: | 06-13-2008 |
| Base:       | RG     | Eff. Date:  | 08-09-2018 | Leads:      | 9#18   |               |            |

| Specs                           |                         |                                |                      |
|---------------------------------|-------------------------|--------------------------------|----------------------|
| Catalog Number:                 | IDCSWDM3542             | Insulation Class:              | H                    |
| Enclosure:                      | TENV                    | Inverter Code:                 | Inverter Duty        |
| Frame:                          | 56C                     | KVA Code:                      | M                    |
| Frame Material:                 | Stainless Steel         | Lifting Lugs:                  | No Lifting Lugs      |
| Output @ Frequency:             | .750 HP @ 60 HZ         | Locked Bearing Indicator:      | Locked Bearing       |
| Synchronous Speed @ Frequency:  | 1800 RPM @ 60 HZ        | Motor Lead Quantity/Wire Size: | 9 @ 18 AWG           |
| Voltage @ Frequency:            | 208.0 V @ 60 HZ         | Motor Lead Exit:               | Ko Box               |
|                                 | 230.0 V @ 60 HZ         | Motor Lead Termination:        | Flying Leads         |
|                                 | 460.0 V @ 60 HZ         | Motor Type:                    | 3518M                |
| XP Class and Group:             | None                    | Mounting Arrangement:          | F1                   |
| XP Division:                    | Not Applicable          | Power Factor:                  | 78                   |
| Agency Approvals:               | UR                      | Product Family:                | Wash Down Paint Free |
|                                 | CSA                     | Pulley End Bearing Type:       | Sealed Bearing       |
| Auxillary Box:                  | No Auxillary Box        | Pulley Face Code:              | C-Face               |
| Auxillary Box Lead Termination: | None                    | Pulley Shaft Indicator:        | Standard             |
| Base Indicator:                 | Rigid                   | Rodent Screen:                 | None                 |
| Bearing Grease Type:            | Polyrex EM (-20F +300F) | RoHS Status:                   | ROHS COMPLIANT       |
| Blower:                         | None                    | Shaft Extension Location:      | Pulley End           |

|                                       |                           |                                    |                            |
|---------------------------------------|---------------------------|------------------------------------|----------------------------|
| <b>Current @ Voltage:</b>             | 1.080 A @ 460.0 V         | <b>Shaft Ground Indicator:</b>     | No Shaft Grounding         |
|                                       | 2.160 A @ 230.0 V         | <b>Shaft Rotation:</b>             | Reversible                 |
|                                       | 2.360 A @ 208.0 V         | <b>Shaft Slinger Indicator:</b>    | No Slinger                 |
| <b>Design Code:</b>                   | B                         | <b>Speed Code:</b>                 | Single Speed               |
| <b>Drip Cover:</b>                    | No Drip Cover             | <b>Motor Standards:</b>            | NEMA                       |
| <b>Duty Rating:</b>                   | CONT                      | <b>Starting Method:</b>            | Direct on line             |
| <b>Electrically Isolated Bearing:</b> | Not Electrically Isolated | <b>Thermal Device - Bearing:</b>   | NONE (OLD)                 |
| <b>Feedback Device:</b>               | NO FEEDBACK               | <b>Thermal Device - Winding:</b>   | Normally Closed Thermostat |
| <b>Front Face Code:</b>               | Standard                  | <b>Vibration Sensor Indicator:</b> | No Vibration Sensor        |
| <b>Front Shaft Indicator:</b>         | None                      | <b>Winding Thermal 1:</b>          | None                       |
| <b>Heater Indicator:</b>              | No Heater                 | <b>Winding Thermal 2:</b>          | None                       |

| Nameplate NP1608L |                             |
|-------------------|-----------------------------|
| CAT NO            | IDCSWDM3542                 |
| SPEC.             | 35S638P559G1                |
| FRAME             | 56C HP .75 TE               |
| VOLTS             | 208-230/460                 |
| MAG CUR           | 1.28/.64 FLA 2.36-2.16/1.08 |
| RPM               | 1740 RPM MAX 6000           |
| HZ                | 60 PH 3 CLASS H             |
| SER.F.            | 1.00 DES B SL HZ 1.83       |
| NEMA-NOM-EFF      | 82.5 WK2 0.106              |
| BLWR V            | PH HZ A                     |
| RATING            | 40C AMB-CONT                |
| DE BRG            | 6205 ODE BRG 6203           |
| CC                | SN                          |

| Parts List   |                                          |          |
|--------------|------------------------------------------|----------|
| Part Number  | Description                              | Quantity |
| SA174395     | SA 35S638P559G1                          | 1.000 EA |
| RA162527     | RA 35S638P559G1                          | 1.000 EA |
| NS2512A01    | INSULATOR, CONDUIT BOX X                 | 1.000 EA |
| 35CB5001A03  | CONDUIT BOX KIT, FOR SUPER II WASHDOWN   | 1.000 EA |
| 11XW1032G06  | 10-32 X .38, TAPTITE II, HEX WSHR SLTD U | 1.000 EA |
| 35EP3122D00U | MASTER ODE,203 BRG,.125NPT DRNS(BALL BUR | 1.000 EA |
| HW4500A33    | 1/8 NPT STAINLESS,HOLO-KROME #13002,PRES | 3.000 EA |
| HW5100A03    | WAVY WASHER (W1543-017)                  | 1.000 EA |
| 35EP3307E00U | MASTER DE,205 BRG,1.623SH,.125NPT DRNS,C | 1.000 EA |
| HW4500A33    | 1/8 NPT STAINLESS,HOLO-KROME #13002,PRES | 3.000 EA |
| HW4606A02    | JM CLIPPER/SEAL (LWE-0938-1624-AL23)     | 1.000 EA |
| 12XN1032S20  | 10-32 X 1-1/4 HEX M.S. , STAINLESS STEEL | 2.000 EA |
| HA1049A01    | DUBO LOK WASHER SIZE 10 (NYLON LOCK SEAL | 2.000 EA |
| HA1049A01    | DUBO LOK WASHER SIZE 10 (NYLON LOCK SEAL | 4.000 EA |
| HW2502D13    | SS KEY, 3/16 SQ X 1.375                  | 1.000 EA |
| HA7000A04    | KEY RETAINER 0.625 DIA SHAFTS            | 1.000 EA |
| MJ5001A02    | 732 CL SEALANT 3 OZ DIXIE BEARING 289100 | 0.001 EA |
| 85XU0407S04  | 4X1/4 U DRIVE PIN STAINLESS              | 2.000 EA |
| LB1164       | LABEL,WARNING AND DRAIN                  | 1.000 EA |
| HA5027A02    | HA4054 T-DRAIN X2 BAGGED WITH LABEL      | 1.000 EA |
| MJ1000A02    | GREASE, POLYREX EM EXXON (USe 4824-15A)  | 0.050 LB |
| HA3100S12    | THRUBOLT 7.625 LENGTH 1.250 TH LENGTH SS | 4.000 EA |
| LC0145B01    | CONNECTION LABEL                         | 1.000 EA |
| NP1608L      | SS WD INV UL CSA CC REV MTG              | 1.000 EA |

| <b>Parts List (continued)</b> |                                         |                 |
|-------------------------------|-----------------------------------------|-----------------|
| <b>Part Number</b>            | <b>Description</b>                      | <b>Quantity</b> |
| 35PA1066                      | PKG GRP, PRINT PK1008A06                | 1.000 EA        |
| MN416A01                      | TAG-INSTAL-MAINT no wire (1200/bx) 5/18 | 1.000 EA        |

AC Induction Motor Performance Data

Page 1 of 1



**AC Induction Motor Performance Data**

Record # 26878

Typical performance - not guaranteed values

|                          |                    |                        |
|--------------------------|--------------------|------------------------|
| <b>Winding:</b> 35WGP559 | <b>Type:</b> 3519M | <b>Enclosure:</b> TENV |
|--------------------------|--------------------|------------------------|

| Nameplate Data    |                |          | General Characteristics at 460 V, 60 Hz:<br>High Volt Connection |                        |           |
|-------------------|----------------|----------|------------------------------------------------------------------|------------------------|-----------|
| Rated Output (HP) | .75            |          | Full Load Torque                                                 | 2.27 LB-FT             |           |
| Volts             | 208-230/460    |          | Start Configuration                                              | DOL                    |           |
| Full Load Amps    | 2.36-2.16/1.08 |          | Break Down Torque                                                | 10.4 LB-FT             |           |
| R.P.M.            | 1740           |          | Pull-Up Torque                                                   | 6.61 LB-FT             |           |
| Hz                | 60             | Phase    | 3                                                                | Locked-rotor Torque    | 7.4 LB-FT |
| NEMA Design Code  | B              | KVA Code | M                                                                | Starting Current       | 9.77 Amps |
| Service Factor    | 1              |          | No-load Current                                                  | 0.64 Amps              |           |
| NEMA Nom. Eff.    | 82.5           | P.F.     | 78                                                               | Line-line Res. @ 25°C. | 23.5 Ohms |
| Rating - Duty     | 40C AMB-CONT   |          | Temp. Rise @ Rated Load                                          | 77°C                   |           |
| S.F. Amps         | 2.8-2.54/1.27  |          | Temp. Rise @ S.F. Load                                           |                        |           |

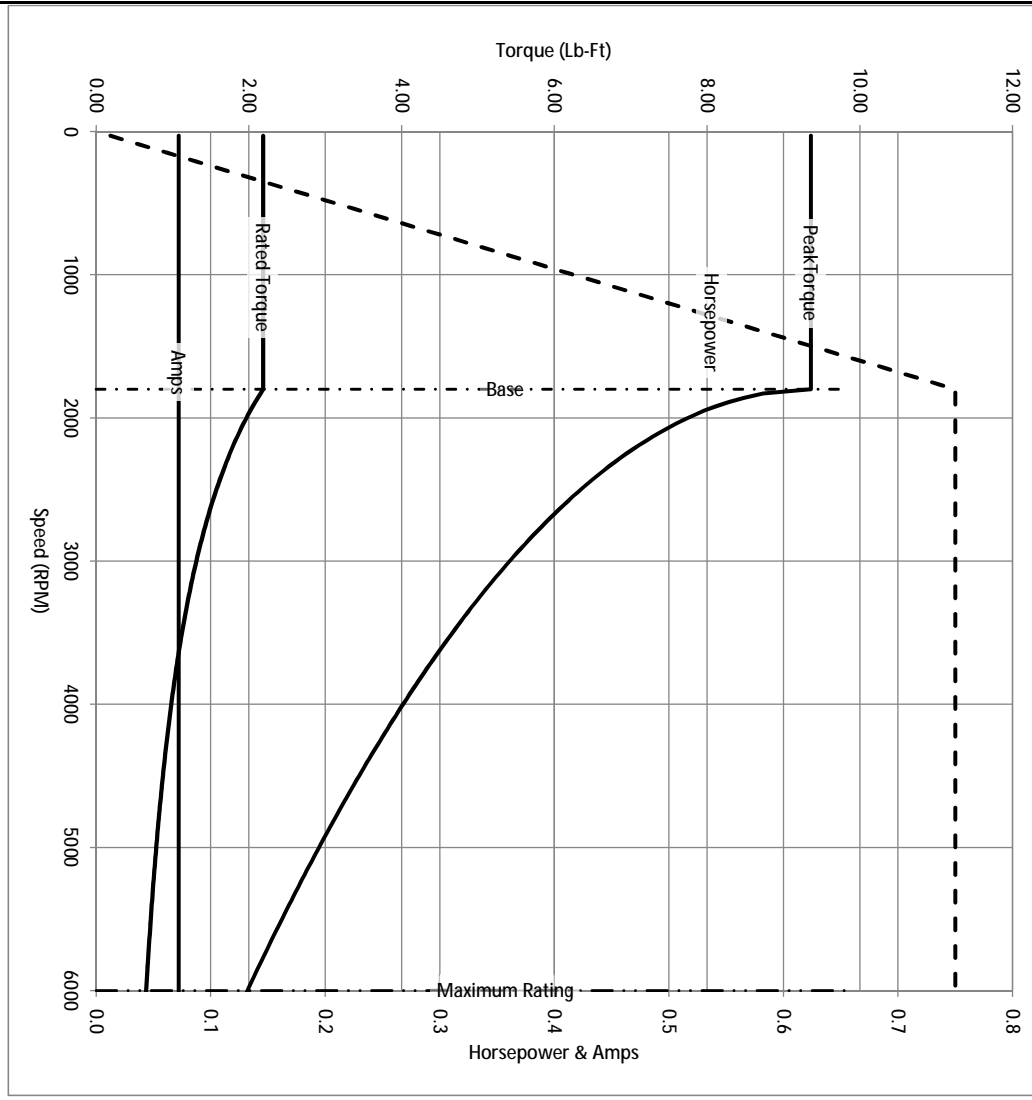
Load Characteristics at 460 Volts, 60 Hz, 0.75 HP

| % of Rated Load | 25    | 50    | 75    | 100  | 125  | 150  | S.F. |
|-----------------|-------|-------|-------|------|------|------|------|
| Power Factor    | 35    | 56    | 70    | 78   | 84   | 88   |      |
| Efficiency      | 73    | 81.9  | 83.8  | 83.5 | 82.5 | 80.6 |      |
| Speed           | 1787  | 1773  | 1758  | 1743 | 1728 | 1709 |      |
| Line Amperes    | 0.679 | 0.776 | 0.909 | 1.08 | 1.27 | 1.49 |      |

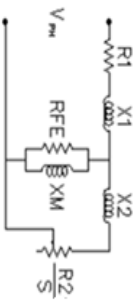
Baldor Electric Company Fort Smith, Arkansas



|            |             |                         |                |                                       |       |                                                   |
|------------|-------------|-------------------------|----------------|---------------------------------------|-------|---------------------------------------------------|
| Catalog    | IDCSWDM3542 | NP VOLTS                | 208-230/460    | ENCLOSURE                             | TENV  | WYE CONN EQ CRT OHMS PER PHASE (BASE RATING, 20C) |
| FRAME      | 56C         | NP AMPS                 | 2.36-2.16/1.08 | Base Volts                            | 460   | R1 11.500 X1 14.221                               |
| HP         | 0.75 HP     | DUTY                    | Cont           | Base AMPS                             | 1.08  | R2 6.840 X2 9.434                                 |
| BASE SPEED | 1800        | MAX SAFE RPM            | 6000           | Slip Hz                               | 1.90  | XM1 368.350                                       |
| PHASE/HZ   | 3/60        | AMB <sup>0</sup> /TNSDL | 40/H           | WK <sup>2</sup> (lb-ft <sup>2</sup> ) | 0.112 |                                                   |



Remarks: Calculated Data



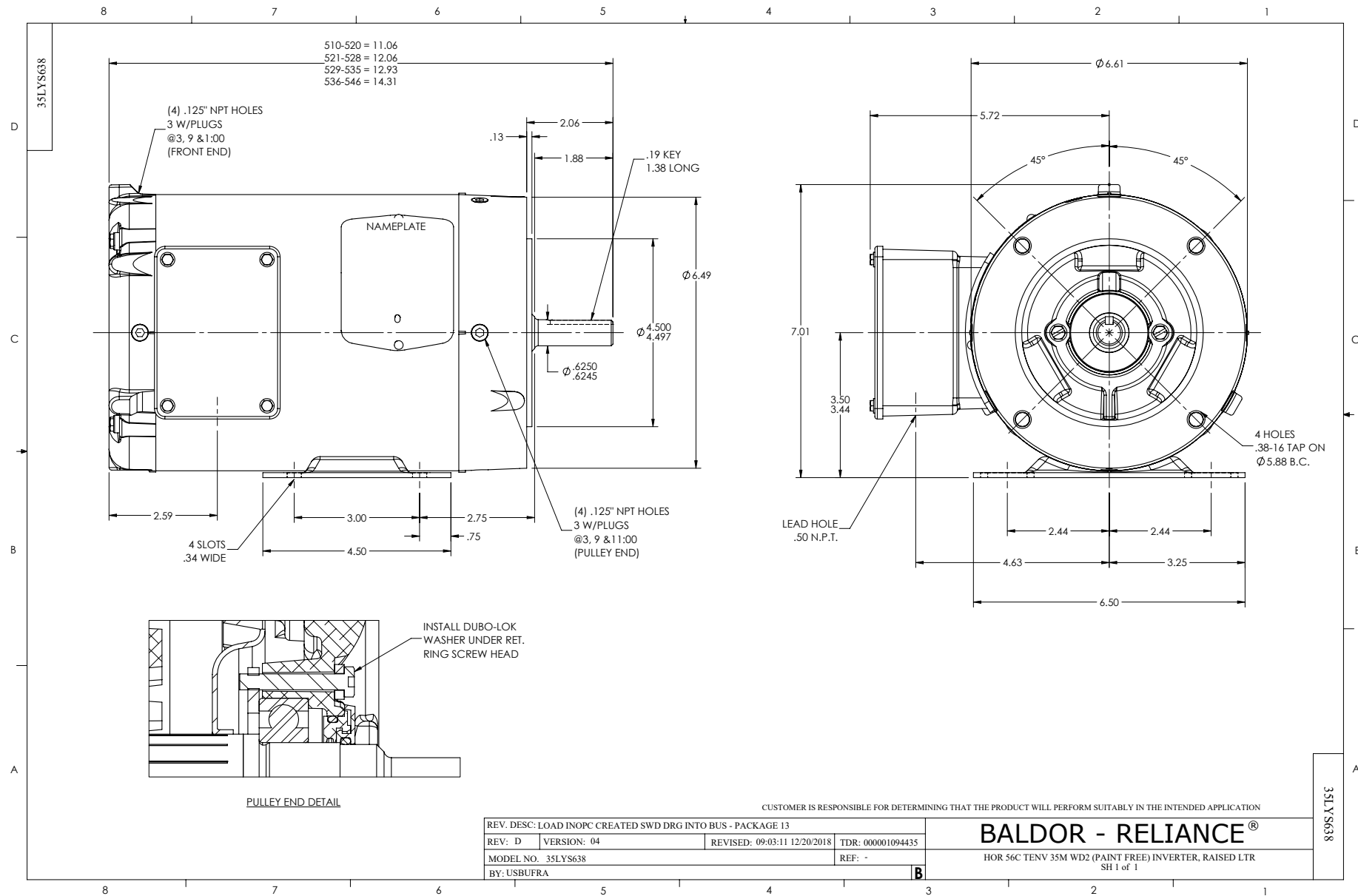
**BALDOR** DR BY ENR  
 CK BY  
 APP BY ENR  
 DATE 3/6/2013

**A MEMBER OF THE ABB GROUP**

A-C MOTOR  
 PERFORMANCE CURVES

35S638P559G1  
 ISSUE DATE 3/6/2013





CD0005



LOW VOLTAGE  
(2Y)



LINE

HIGH VOLTAGE  
(1Y)



LINE

NOTES:

1. INTERCHANGE ANY TWO LINE LEADS TO REVERSE ROTATION.
2. OPTIONAL THERMOSTATS ARE PROVIDED WHEN SPECIFIED.
3. ACTUAL NUMBER OF INTERNAL PARALLEL CIRCUITS MAY BE A MULTIPLE OF THOSE SHOWN ABOVE.
4. LEAD COLORS ARE OPTIONAL. LEADS MUST ALWAYS BE NUMBERED AS SHOWN.

REV. DESC: REVISE TO SHOW OPTIONAL COLORS

REV. LTR: E BY: JLP

REVISED: 01/19/99 10:15

TDR: 0171435

90000

FILE: AAA00005140

MDL: -

MTL: -

**BALDOR ELECTRIC Co.**

3PH, DV, 9 LEADS

CD0005