

# **Moxa VPort 26A-1MP User's Manual**

---

**Edition 2.3, August 2016**

[www.moxa.com/product](http://www.moxa.com/product)



© 2016 Moxa Inc. All rights reserved.

# Moxa VPort 26A-1MP User's Manual

The software described in this manual is furnished under a license agreement and may be used only in accordance with the terms of that agreement.

## Copyright Notice

© 2016 Moxa Inc. All rights reserved.

## Trademarks

The MOXA logo is a registered trademark of Moxa Inc.  
All other trademarks or registered marks in this manual belong to their respective manufacturers.

## Disclaimer

Information in this document is subject to change without notice and does not represent a commitment on the part of Moxa.

Moxa provides this document as is, without warranty of any kind, either expressed or implied, including, but not limited to, its particular purpose. Moxa reserves the right to make improvements and/or changes to this manual, or to the products and/or the programs described in this manual, at any time.

Information provided in this manual is intended to be accurate and reliable. However, Moxa assumes no responsibility for its use, or for any infringements on the rights of third parties that may result from its use.

This product might include unintentional technical or typographical errors. Changes are periodically made to the information herein to correct such errors, and these changes are incorporated into new editions of the publication.

## Technical Support Contact Information

[www.moxa.com/support](http://www.moxa.com/support)

### **Moxa Americas**

Toll-free: 1-888-669-2872  
Tel: +1-714-528-6777  
Fax: +1-714-528-6778

### **Moxa Europe**

Tel: +49-89-3 70 03 99-0  
Fax: +49-89-3 70 03 99-99

### **Moxa India**

Tel: +91-80-4172-9088  
Fax: +91-80-4132-1045

### **Moxa China (Shanghai office)**

Toll-free: 800-820-5036  
Tel: +86-21-5258-9955  
Fax: +86-21-5258-5505

### **Moxa Asia-Pacific**

Tel: +886-2-8919-1230  
Fax: +886-2-8919-1231

# Before Getting Started

Before using your VPort 26A-1MP, please pay close attention to the following instructions:

- ❑ After opening the VPort 26A-1MP box, compare the contents of the box with the **Package Checklist in Chapter 1**. Notify your sales representative if any of the items are missing or damaged.
- ❑ To prevent damage or problems caused by improper use, read the **Quick Installation Guide** (the printed handbook included in the package) before assembling and operating the device and peripherals. You may also refer to **Chapter 1**, under **Product Description**, and all of **Chapter 2**, of this manual.
- ❑ The VPort 26A-1MP IP Camera has been designed for various environments and can be used to build various applications for general security or demonstration purposes. For standard applications, refer **Chapter 2, Getting Started**, and **Chapter 3, Accessing the VPort 26A-1MP Web-based Manager**.

## Important Note

- ❑ Surveillance devices may be prohibited by law in your country. Since VPort is both a high performance surveillance system and networked video server, verify that the operations of such devices are legal in your locality before installing this unit for surveillance purposes.

# Table of Contents

<b>1. Introduction</b> .....	<b>1-1</b>
Overview .....	1-2
Package Checklist .....	1-4
Product Features .....	1-5
Typical Application .....	1-6
Product Description .....	1-7
<b>2. Getting Started</b> .....	<b>2-1</b>
Before Getting Started .....	2-2
First-Time Installation and Configuration .....	2-2
Hardware Installation.....	2-2
Software Installation.....	2-7
VPort 26A-1MP Dimensions .....	2-9
Wiring Requirements.....	2-10
<b>3. Accessing the VPort 26A-1MP's Web-based Manager</b> .....	<b>3-1</b>
Functions Featured on the VPort's Web Homepage.....	3-2
VPort's Information .....	3-2
IP Camera Name .....	3-2
Camera Image View .....	3-2
Audio Control.....	3-3
Client Settings .....	3-3
System Configuration .....	3-4
Video Information .....	3-4
Relay Control.....	3-4
Snapshot.....	3-4
<b>4. System Configuration</b> .....	<b>4-1</b>
System Configuration by Web Console .....	4-2
System .....	4-3
Network .....	4-10
Video .....	4-27
Audio.....	4-33
DynaStreamTM .....	4-34
Alarm .....	4-35
<b>A. Frequently Asked Questions</b> .....	<b>A-1</b>
<b>B. Modbus Address Table</b> .....	<b>B-1</b>
<b>C. Time Zone Table</b> .....	<b>C-1</b>
<b>D. Technical Specifications</b> .....	<b>D-1</b>



## Introduction

---

The VPort 26A-1MP is a rugged IP camera designed for use in harsh environments. In addition to being able to handle basic video feeds, many advanced features are also included to set up surveillance or web multimedia applications. The VPort 26A-1MP is designed to provide stability, robustness, ease-of-use, and flexibility.

The following topics are covered in this chapter:

- ❑ **Overview**
- ❑ **Package Checklist**
- ❑ **Product Features**
- ❑ **Typical Application**
- ❑ **Product Description**

# Overview

The VPort 26A-1MP is a vandal-proof, IP66-rated, fixed dome HD IP camera for use in harsh, outdoor environments. With a maximum resolution of 1280 x 800, H.264/ MJPEG triple video streams and day-and-night camera lens, the VPort 26A-1MP is especially well-suited for outdoor video surveillance applications.

To enhance video image quality, the VPort 26A-1MP series is equipped with a megapixel 3 to 9 mm vari-focal lens that meets versatile viewing angle and distance requirements. With a built-in removeable IR-cut filter, and automatic switching from color to B/W images, the VPort 26A-1MP series is suitable for day-and-night use. Along with built-in DNR (Digital Noise Reduction) and WDR (Wide Dynamic Range), the VPort 26A-1MP series provides excellent image quality under low illumination or back light conditions.

The VPort 26A-1MP series is specially designed for outdoor applications with the following features: IP66 rain and dust protection, high EMI/surge protection, -40 to 50°C or -40 to 75°C operating temperature without a fan or heater, metal housing, and EN 62262 IK10 vandal-proof dome cover. In addition, the camera is built in a dehumidified membrane for diffusing the moisture inside the camera. Users can choose either the VPort P26A-1MP with PoE (Power over Ethernet, 802.3af) functionality, or the VPort 26A-1MP model with a 12/24 VDC or 24 VAC direct-wired power input.

The VPort 26A-1MP series is designed to provide both H.264 and MJPEG video streams and transmit up to 3 independent video streams (2 in H.264, and 1 in MJPEG) simultaneously. The camera can encode and transmit up to 30 FPS for each of the H.264 and MJPEG streams. In addition, Moxa's DynaStream™ function changes the video frame rate automatically to help you control your network bandwidth budget and ease network system management. The CBR Pro™ function guarantees no packet loss in limited bandwidth transmissions, ensuring that images will not exhibit the mosaic effect. Advanced network security functions, such as 802.1x and SSH, are also provided to prevent unauthorized access or data hijacking, which is critical for most surveillance applications.

## **High Quality 1/2.7" HD CMOS sensor with advanced DNR and WDR**

The VPort 26A-1MP IP camera uses a 1/2.7" HD CMOS sensor with DNR (digital noise reduction) and WDR (wide dynamic range), which provide clearer video images in many environments, and especially in low illumination (lux) environments.

## **Comes with 3 to 9 mm vari-focal lens, to meet a variety of viewing requirements**

The VPort 26A-1MP IP camera is designed with a 3 to 9 mm vari-focal lens for providing viewing angles from 148.4° to 43.8° diagonal. In addition, this lens supports auto-iris functionality, and possesses day & night capability with IR-cut removable (ICR), which is suitable for most outdoor applications.

## **-40 to 50°C or -40 to 75°C operating temperature without fan and heater**

The VPort 26A-1MP IP camera can work in -40 to 50°C, and VPort 26A-1MP-T can work in -40 to 75°C operating temperature range, without the need of fan and heater, which can reduce the maintenance workload substantially, especially in the outdoor or harsh environments.

## **IP66-rated form factor design for protection against dust and rain**

The IP66-rated form factor design makes the VPort 26A-1MP suitable for use in outdoor environments, without the need for additional protective housing. In addition, cable glands are provided free of charge to ensure that attached cables also have IP66-rated protection.

## **Support for PoE (Power-over-Ethernet) or direct-wired power inputs**

The VPort P26 supports standard 48 VDC power-over-Ethernet (IEEE 802.3af), and the VPort 26A-1MP supports a direct-wired 12/24 VDC or 24 VAC power input.

## **High Performance H.264/MJPEG video compression**

Video input can be efficiently compressed into H.264/MJPEG video stream packets in real time. This is done without sacrificing remote monitoring capability or storage. Five levels of compression quality and four different image resolutions provide greater versatility.

### **CBR Pro™ for no video image packet loss when bandwidth is limited**

An innovative CBR Pro™ function, where CBR stands for constant bit rate, is provided with the VPort 26A-1MP series for guaranteeing no video image packet loss when bandwidth is limited. Even when the general CBR function is activated, there is a chance of video image packet loss, which could cause a mosaic effect due to a burst of bandwidth consumption in a short time (few milliseconds) while delivering image frames. With Moxa CBR Pro™, even video images of high-speed objects, such as cars, will exhibit good image quality with no mosaic effect.

### **2-way audio supported for a complete surveillance solution**

The VPort 26A-1MP series support both audio input and audio output for voice over IP communication between a field site and central site. The 2-way audio function not only saves time, but also saves the cost of needing to add additional communication devices (such as a phone).

### **Three video streams for meeting versatile application requirements**

VPort 26A-1MP is a powerful IP Camera. Aside from the high quality H.264 video compression, it can also generate a maximum of three video streams: two H.264 and one MJPEG simultaneously, to meet the needs of specific applications. For example, the user can view the h.264 video streams with full D1 resolution at 30FPS, do MJPEG image analysis with full D1 resolution at 10FPS, and record the H.264 video streams with CIF resolution at 30FPS.

### **Video latency under 200 ms (milliseconds) for more real-time video**

In some mission critical environments, low video latency is a key requirement. For example, a highway transportation system monitors vehicles that are moving very quickly. The video display in the traffic control center needs to reflect actual current traffic conditions. Therefore, the video latency must be under 200ms.

### **SD Card for recording video locally when the network is down**

The VPort 26A-1MP is equipped with an SD card socket (SDHC, V2.0) for local storage and offline data logging, in the event of network interruptions. Currently, the VPort 26A-1MP supports SD cards up to 32 GB.

### **RTSP for easy integration with existing systems**

RTSP (Real-time Streaming Protocol) is a client-server multimedia presentation control protocol, which ensures interoperability among video devices and software. Hardware or software that supports RTSP streaming can easily identify and decode the video stream without the hassle of codec installation. For example, users can view video images from the VPort 26A-1MP directly with Quick Time and VLC, both of which support RTSP streaming.

### **Multicast (IGMP) transmission for network efficiency**

Transmitting digital video images via an IP network requires many times the bandwidth required for transmitting general data. For this reason, the efficiency of network bandwidth management is one of the most important factors that determine the performance of a video over IP surveillance system. The VPort 26A-1MP supports multicast transmission with the IGMP protocol, which can reduce the bandwidth requirements when multiple clients access the same video stream, and greatly increases the efficiency of network bandwidth management.

### **Easy web access using standard browsers**

There is no need to install new software to access the IP camera, since the embedded web server allows users to use any popular web browser to access the IP camera from anywhere over the Internet. As long as you are connected to the network, you will be able to view the same images seen by your cameras.

### **Built-in 3-area-selectable Video Motion Detection (VMD)**

External sensors are not required, since the video image can be configured to detect motion in 3 areas, making it easy to set up a security system either in your office or in the field. And the customizable settings allow you to tune the system for both object size and sensitivity, making the IP Camera adaptable to different environments.

### **Tamper alarm to detect when the camera has been painted or blocked**

The tamper alarm helps prevent sabotage by detecting when the VPort 26A-1MP camera has been painted or blocked.

**Weekly schedule for automated surveillance**

The user-defined time period will check security settings on a weekly basis, and send notifications or drive external devices, making the VPort 26A-1MP suitable for more versatile applications.

**SDK support for developers**

The high-performance IP camera can be integrated into many applications—without busting your budget—and the complete programming interface of the Moxa VPort SDK PLUS makes the developer’s job easy and straightforward. To ask about SDK requirements, please contact a Moxa sales representative for details and an application form.

# Package Checklist

The Moxa VPort 26A-1MP is shipped with the following items. If any of these items are missing or damaged, please contact your sales representative for assistance.

- VPort 26A-1MP (includes 2-pin terminal block for power input) or VPort P26A-1MP (PoE power input)
- Screw handle accessory package

Torx screw driver for attaching/detaching the upper case	4 sets of self-tapping screws (6 cm length) and anchors	9-pin terminal block for DI/Relay/Audio
		

- Cable glands accessories package

IP66 cable glands to ensure IP66 protection when the cables are connected


- Sticker for camera mounting positions



- Quick Installation Guide
- Document & Software CD (includes User’s Manual, Quick Installation Guide, and VPort Utility)
- Warranty Statement

*NOTE: Notify your sales representative if any of the above items are missing or damaged.*

# Product Features

## **High Video Image Quality**

- 1/2.7" progressive CMOS sensor for HD (1280 x 720) resolution
- Day and night viewing capability with ICR (IR cut filter) and color /black & white image switch
- Supports DNR (digital noise reduction), BLC (back level control), and WDR (wide dynamic range) for better image quality
- Equipped with 3 mm to 9 mm vari-focal megapixel lens for wide-range fields of view
- Minimum illumination up to 0.2 lux (color) and 0.05 lux (B/W) at F=1.2
- Image mirror and inverse
- 350° pan, 85° tilt, and 360° rotate camera head angles for different installation positions.
- Supports up to 3 privacy mask areas and 4X digital zoom

## **Excellent Video/Audio streaming and network transmission performance**

- Up to 3 simultaneous video streams for H.264 and MJPEG codecs
- Video stream up to 30 frames/sec at WXGA (1280 x 800) resolution
- DynaStream™ supported for optimal network efficiency
- CBR Pro™ supported for high image quality in limited bandwidth transmissions
- Video latency under 200 ms
- 1 audio input and 1 audio output supported for complete video/audio surveillance solution
- WXGA/HD/SVGA/Full D1/ 4CIF/ VGA/ CIF/ QCIF resolution
- TCP, UDP, and HTTP network transmission mode
- Supports RTSP streaming
- Supports IGMP (ver.3) protocols for efficient network transmission
- Supports SNMP (V1/V2C/V3) for network system integration and management
- Supports QoS (ToS) for transmission priority
- Adjustable frame rate and bit rate control
- User-friendly IP filtering
- Supports IEEE802.1X for network access authentications
- Supports HTTPS and SSH for network transmission security
- UPnP Supported
- Up to 5 unicast video streams, and 50 multicast clients
- Supports multicast push for all multicast clients
- OnVIF standard supported for compatibility with other IP video products
- Modbus/TCP supported for direct communication with SCADA system

## **Rugged Design for Mission-critical Industrial Environments**

- IP66 form factor protection for rain and dust
- Model available with PoE (802.3af) or 12/24 VDC and 24 VAC power input, with LED indicators
- Panel mounting for mounting on a ceiling, or outdoor installation kit for versatile installation method
- -40 to 50°C or -40 to 75°C (T model) operating temperature for critical industrial environments
- No heater or fan for long MTBF
- CE, FCC, UL60950-1
- 5-year product warranty

## **Intelligent Alarm Triggering Capability**

- Built-in tamper alarm, and VMD (video motion detection)
- 1 DI and 1 relay output (DO) for sensors and alarms
- Supports video loss alarm
- Pre, trigger, and post snapshot images supported

- 24 MB video buffer for pre-event snapshot images
- Sequential snapshot images supported
- Supports SDHC slot for local storage with SD card in event recording
- Supports SMTP and FTP for alarm message transmission
- Supports HTTP event server

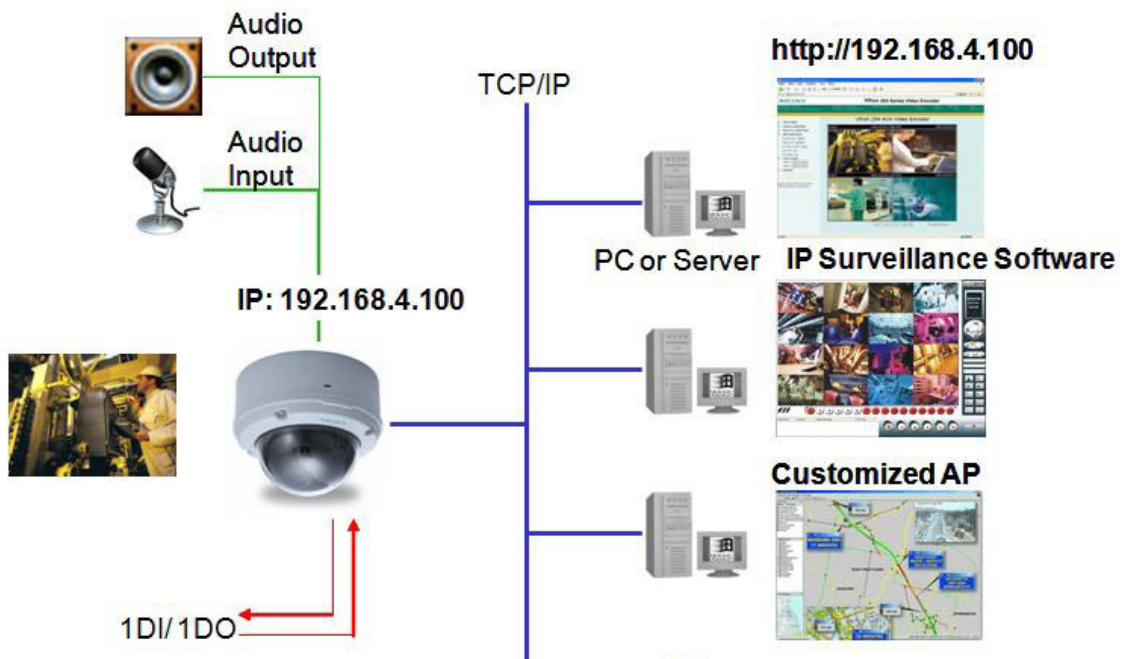
#### **Video management and control**

- Support for Moxa SoftNVR-IA IP surveillance software, a video recording and management solution
- Free: Moxa VPort SDK Plus with CGI Commands, ActiveX Control, and API support for third-party developers
- ONVIF conformity for standardization and interoperability

**NOTE** If you are interested in Moxa's VPORT SDK PLUS, please go to Moxa's website [www.moxa.com](http://www.moxa.com) to download the package, or contact a Moxa sales representative for more information about this SDK

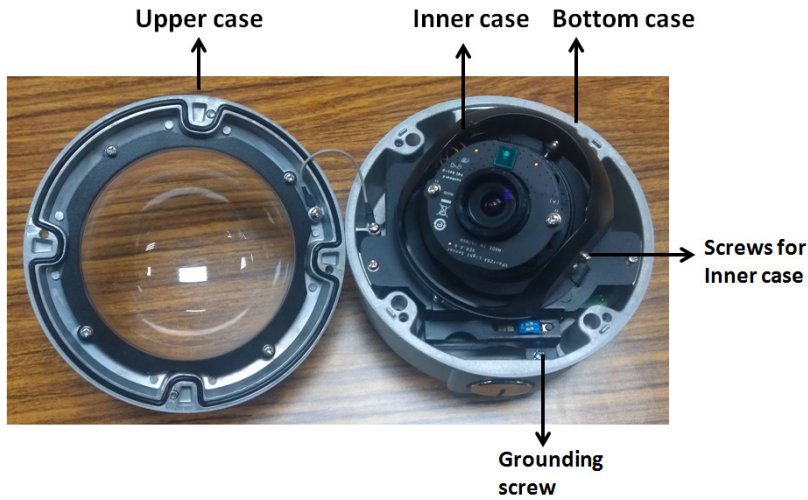
**NOTE** If you are interested in SoftNVR-IA IP surveillance software, please go to Moxa's website ([www.moxa.com](http://www.moxa.com)) to download the trial version.

## Typical Application

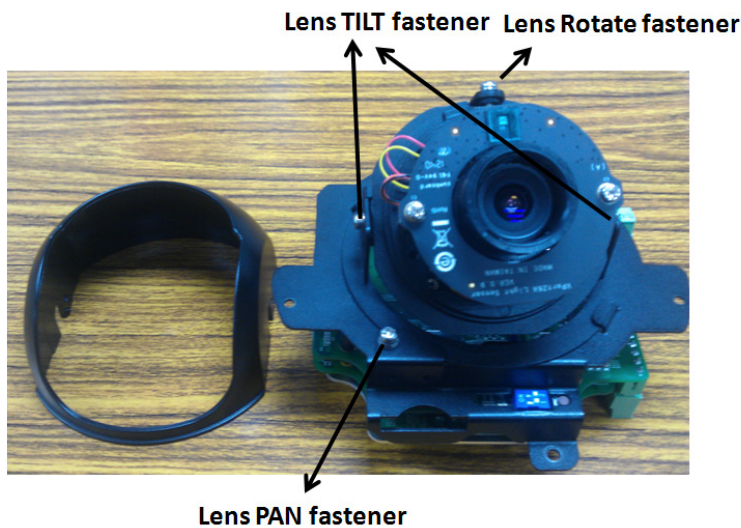
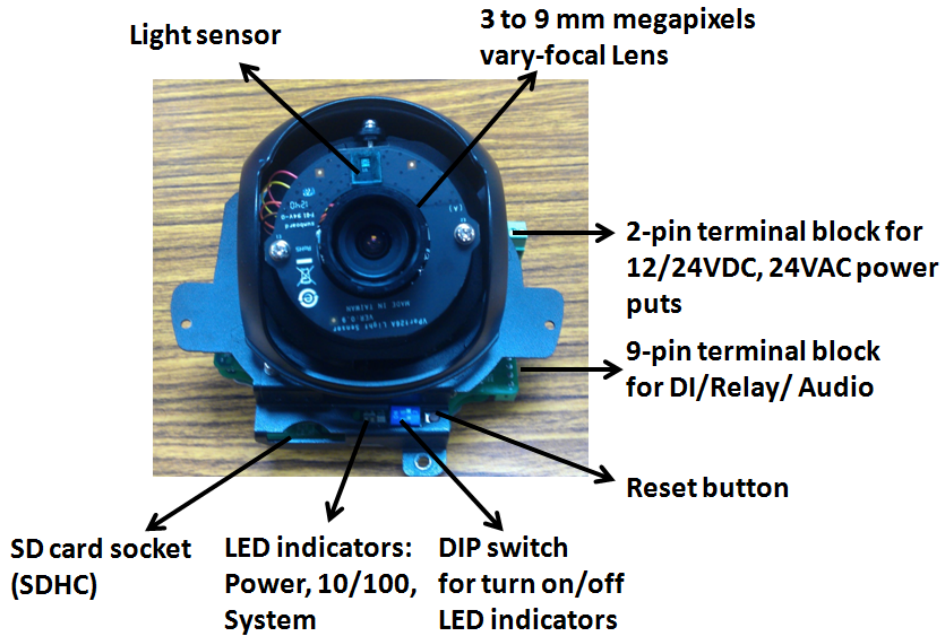


# Product Description

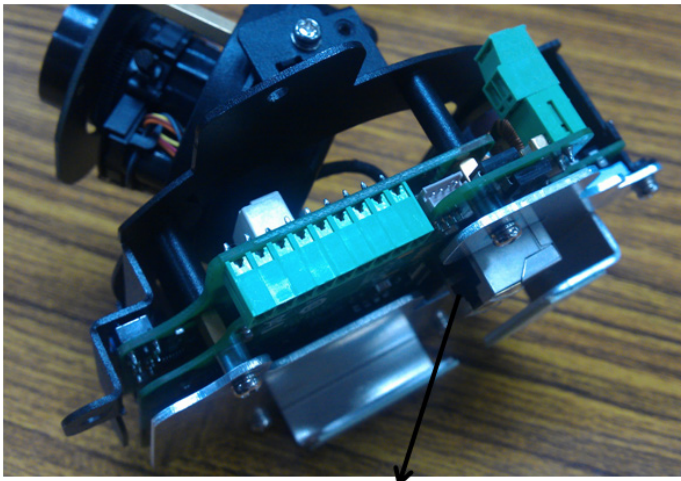
## Form Factor



## IP Camera Module



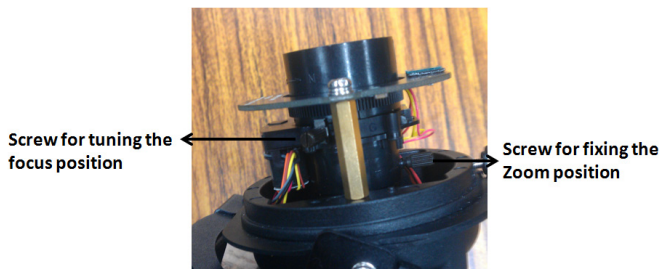




**RJ45 Ethernet connector**

**Vari-focal Lens**

The VPort 26A-1MP series comes with a day and night 3to 9mm megapixel lens for providing high quality video images. Users can adjust the Zoom and Focus manually to get clear images regardless of the site environment.



**NOTE** To tune the focus position, loosen the screw, and then turn the lens head.

**Pan, Rotation and Tilt Adjustment**

Use the pan, rotation and tilt fasteners for panning, rotating and tilting the lens angles. To do this, the screws must be loosened in advance. After the lens angles are correct, tighten the screws to fix the angles.

**Light Sensor**

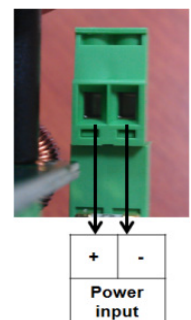
The VPort 26A-1MP includes a light sensor for detecting illumination, which is for enabling the ICR (IR-cut filter removable) function. When the illumination is under 3 lux, the image will be switched to night mode in black and white, and when the illumination is greater than 5 lux, the image will be switched back to day mode in color.

**2-pin Terminal Blocks for Power Input**

VPort 26A-1MP series has comes in two models:

- VPort 26A-1MP: 12/24 VDC or 24 VAC power inputs
- VPort P26A-1MP: powered with PoE (Power over Ethernet, 802.3af)

Note: The 2-pin terminal block shown here is for the direct-wired power input of the VPort 26A-1MP.

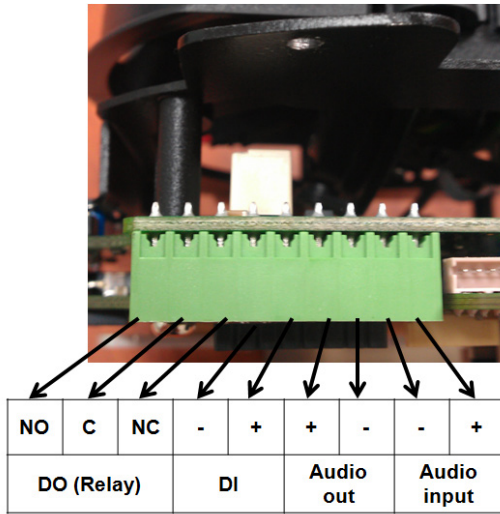


**NOTE** The specifications of the direct-wire power input are 12-32 VDC for 12/24 VDC power input, or 18-30 VAC for 24 VAC power input. The maximum power consumption is 4.7 Watt.



**9-pin Terminal Block Connector for DI, DO, and Audio**

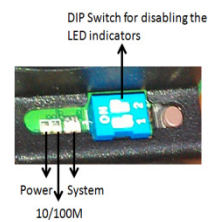
The VPort 26A-1MP supports 1 DI (digital input), 1 DO (relay output), 1 audio input (line-in or mic-in), and 1 audio output (line-out) through the 9-pin terminal block.



DO (Relay Output)	NO (Normal Open)	Max. 1A, 24 VDC Initial status is Normal Open
	C (Common)	
	NC (Normal Close)	
DI (Digital Input)	+	Low: +13V to +30V High: -30V to +3V
	-	

**LED Indicators and DIP Switches**

The VPort 26A-1MP has 3 LEDs for indicating the power status, 10/100 Mbps Ethernet link, and system status. In addition, one DIP switch (No.2) is provided for enabling or disabling the LED light for users who do not want the LED light to be visible at night.



LED	Description	
Power	On: power on Off: power off	
10/100 M	Amber: Ethernet link is 10 Mbps Green: Ethernet link is 100Mbps	
System	Red On	Hardware initialization
	Red blinking	Software initialization
	Green On	System boot-up successfully
	Green blinking	Firmware upgrade proceeding
DIP Switch 1	Reserved	
DIP Switch 2	On: LED light is on Off: LED light is off	

**SD card Socket (SDHC)**

The VPort 26A-1MP supports a standard SDHC interface for local storage with a current maximum size of 32 GB. The user can use an SD card which fits this specification. Currently, the local storage supports triggered video recording when an event has occurred.

**NOTE** The VPort 26A-1MP supports a standard SDHC interface. Users can use SD cards suitable for this specification. Transcend or Sandisk SD cards are recommended, particularly Sandisk Extreme III SD, because of their rapid read/write speed.

**NOTE** To check if the SD card has been successfully mounted, access the VPort's web-based manager and check under system configuration-> Local storage.

#### **Reset Button**

The reset button is used to reset the camera hardware.

##### **1. Reboot:**

To reboot the VPort 26A-1MP, power it off and then power it back on again, or push the RESET button one time. The System LED will light in red as the POST (Power on Self Test) process runs. When the rebooting process is finished, the System LED will change to a green color.

##### **2. Restore to Factory Settings:**

To restore the VPort 26A-1MP to the factory default settings, press the reset button continuously until the System LED blinks in red. After the system LED stops blinking, release the reset button. The POST process will run, and the VPort will reboot. The System LED will light in green when the VPort has finished rebooting.

#### **RJ45 Ethernet Port**

The RJ45 Ethernet port is for 10/100Mbps network transmission, in addition to PoE (power over Ethernet, 802.3af) power supply for VPort P26A.

**NOTE** The VPort P26 supports standard IEEE 802.3af Power-over-Ethernet (PoE). The maximum power consumption is about 5.8W.

**NOTE** PoE patent information can be found here: <http://www.cmspatents.com/>.

**NOTE** The equipment is designed for in building installation only and is not intended to be connected to exposed (outside plant) networks.

# 2

## Getting Started

---

This chapter includes information about how to install a VPort 26A-1MP IP camera.

The following topics are covered in this chapter:

- **Before Getting Started**
- **First-Time Installation and Configuration**
  - Hardware Installation
  - Software Installation
- **VPort 26A-1MP Dimensions**
- **Wiring Requirements**

## Before Getting Started

In what follows, “user” refers to those who can access the IP camera, and “administrator” refers to the person who knows the root password that allows changes to the IP camera’s configuration, in addition to providing general access. Administrators should read this part of the manual carefully, especially during installation.

## First-Time Installation and Configuration

### Hardware Installation

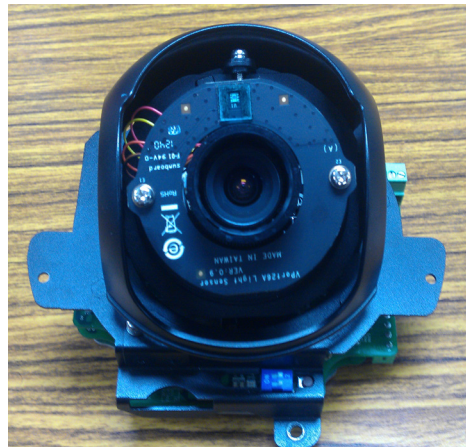
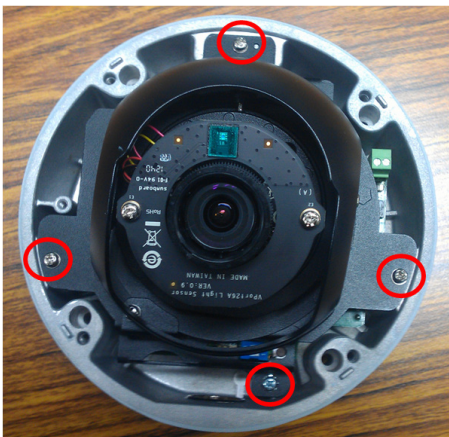
#### Step 1: Open and remove the upper case.

Use the security Torx to loosen the upper case screws.



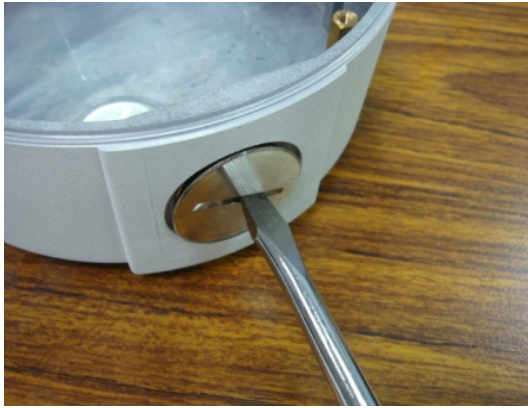
#### Step 2: Remove the inner case

Loosen 4 screws, and take out the IP camera module.



**Step 3: Connect the cables.**

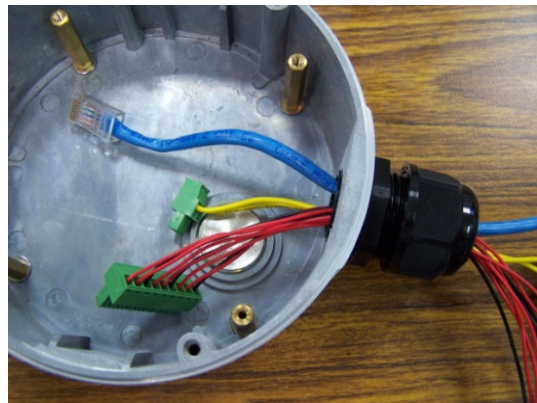
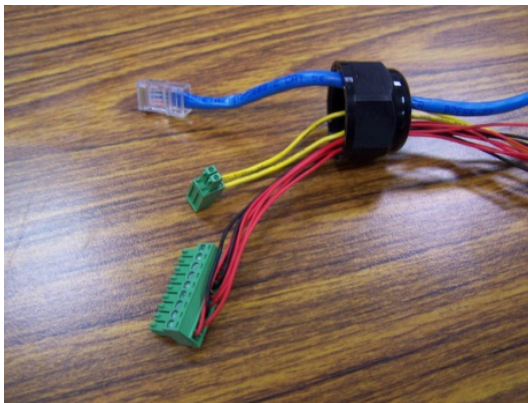
a) Open the conduit hole. (use the side conduit hole as example)



b) Prepare the cable gland (if required).



c) Use the cable gland to assemble the cables.



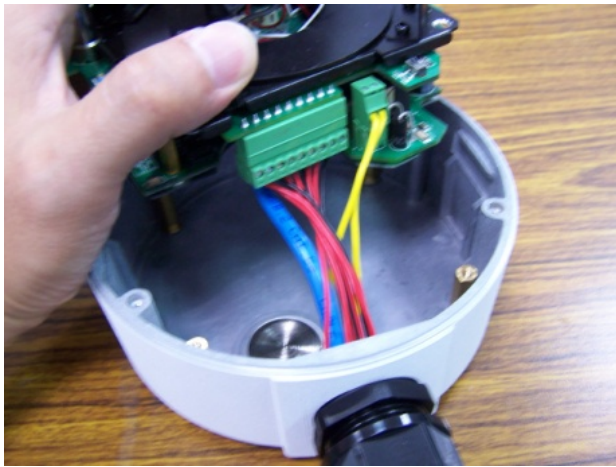
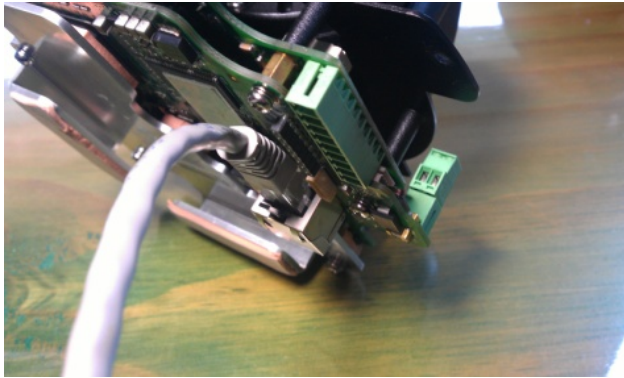
**NOTE** When installing the cable gland, make sure the 2 rubber rings are assembled properly for IP66 protection. If necessary, use silicon sealant.





**d) Connect the cables to the IP camera module's connectors.**

Connect the Ethernet cable to RJ45 Ethernet port, as well as the terminal blocks with power line and DI/DO/Audio lines (if used).



**NOTE** Be sure to arrange the cables carefully to make sure that all cables are connected properly. We recommend connecting the Ethernet cable first, and then the 9-pin terminal block. Connect the 2-pin terminal block last.

**NOTE** The conduit hole must face downward to provide the VPort 26A-1MP with IP66 protection against rain when installed in an outdoor environment.

**Step 4: Mount the bottom case on the ceiling or accessory's mounting kit (VP-MK2)**

**a) Mounting on the ceiling**

Step 1: Use the installation stick or attach the bottom case to the appropriate mounting location on the wall, and mark the positions of the four screw holes with a pen or a pencil.

Step 2: In the marked locations, drill a hole slightly smaller than the supplied screw anchors.

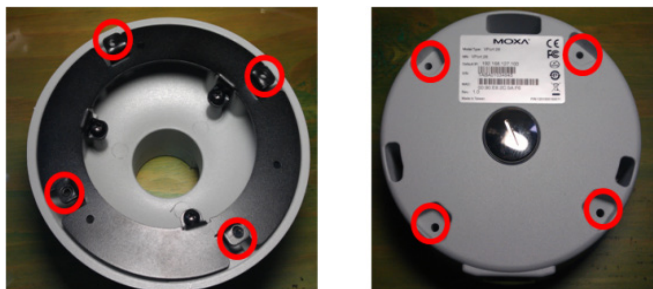
Step 3: Put anchors into these drilled holes.

Step 4: Fasten the bottom case with the four self-tap screws.





**b) Mounting on the accessory's mounting kit (VP-MK2)**

Step 1: Fasten the bottom case on the plate with the four machine screws, which are provided in VP-MK2's accessory package.



Step 2: Assemble the mounting kit with the selected accessory.

VPort 26A-1MP + VP-MK2 + VP-520L	VPort 26A-1MP + VP-MK2 + VP-520HB
	

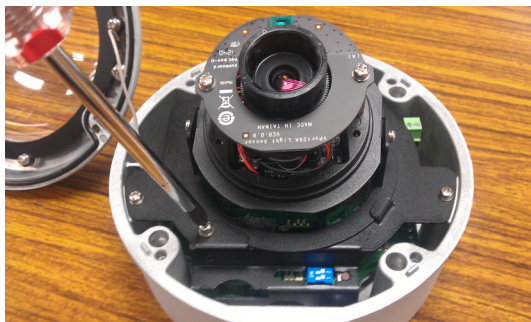
**NOTE** Choose the appropriate mounting accessories based on the installation requirements.

**Step 5: Assemble the IP Camera Module with the bottom case.**



**Step 6: To get the desired video image, adjust the angles and zoom strength.**

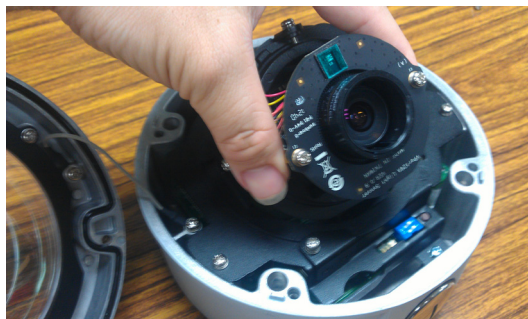
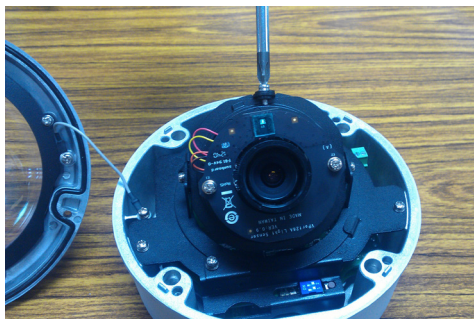
**a) Pan adjustment**



**b) Tilt adjustment**



**c) Rotate adjustment**

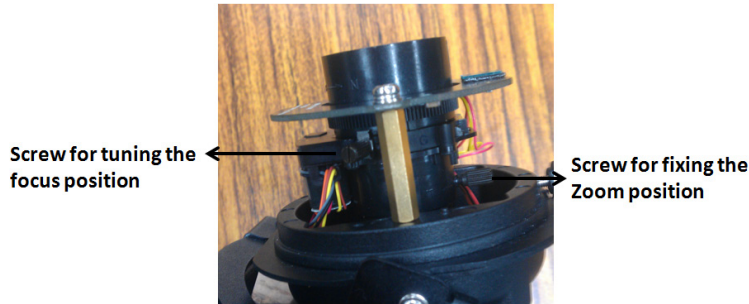


**NOTE** Do not grasp the lens when rotating the camera. Instead, hold the two copper cylinders.



**NOTE** After adjusting the PAN, TILT, and ROTATE positions, tighten all of the screws to ensure that the orientation of the camera does not change.

**d) Zoom adjustment**



To adjust the Zoom and Focus positions, connect to the camera’s web console first so that you can view a live video feed. Next, loosen the screws for both the zoom and focus positions, and then rotate the lens to focus on the desired image. Finally, tighten both screws.

**NOTE** To adjust the focus position, loosen the appropriate screw and then rotate the lens head.

**Step 7: Fasten the upper case to the bottom case to complete the hardware installation.**

## Software Installation


### Step 1: Configure the VPort 26A-1MP’s IP address

When the VPort 26A-1MP is first powered on, the POST (Power On Self Test) will run for a few moments. The System LED will turn green when the POST is complete. The 10 Mbps or 100 Mbps LED will then flash as the IP address is assigned. The network environment determines how the IP address is assigned.

#### Network Environment with DHCP Server

For this network environment, the unit’s IP address will be assigned by the network’s DHCP server. Refer to the DHCP server’s IP address table to determine the unit’s assigned IP address. You may also use the Moxa VPort and Ether Device Configurator Utility (edscfgui.exe), as described below:

#### **Using the Moxa VPort and EtherDevice Configuration Utility (edscfgui.exe)**

1. Run the **edscfgui.exe** program to search for the VPort device. After the application window opens, click on the **Search** button  to initiate a search.
2. When the search has concluded, the VPort’s Model Name, MAC address, IP address, serial port, and HTTP port should be listed in the utility’s window.

Model	IP Address	MAC Address	Status	Name	Location	Model	VPort26A
VPort26A	172.19.16.5	00:90:E8:26:01:26		VPort26A		Name	VPort 26A-1MP IP Camera
VPort06	172.19.16.47	00:90:E8:2E:06:04		VPort06		IP Address	172.19.16.22
VPort 354	172.19.16.48	00:90:E8:20:02:F3		VPort 354		Netmask	255.255.255.0
VPort 26A	172.19.16.29	00:90:E8:26:A6:A8		VPort 26A		Gateway	172.19.16.254
EDS-508A-MM-SC	192.168.127.253	00:90:E8:0E:2F:3B	Managed ...			MAC Address	00:90:e8:10:126:99
EDS-P506A-4POE	192.168.127.252	00:90:E8:20:9D:DE	Managed ...		Switch Location	Serial No	00000
EDS-P506A-4POE	192.168.127.253	00:90:E8:33:DA:F6	Managed ...			Firmware Ver.	1.1.0
VPort 16-M12 (Prolan)	172.19.16.59	00:90:E8:06:01:16		VPort 16-...		BuildTime	13031913
EDS-408A-MM-ST	192.168.127.253	00:90:E8:23:F3:7D	Managed ...			Boot Ver.	1.0.0
EDS-408A-MM-SC	172.19.16.35	00:90:E8:0D:66:73	Managed ...			Http port	80
VPort06	172.19.16.25	00:90:E8:00:00:03		VPort06			
VPort 461	172.19.16.45	00:90:E8:1E:3B:D6		VPort 461			
VPort36	172.19.16.228	00:90:E8:36:01:09		VPort36			
VPort 461 (VA)	172.19.16.60	00:90:E8:21:73:88		VPort 461 (...)			
VPort 461	172.19.16.207	00:90:E8:21:73:AA		VPort 461			
VPort26A	172.19.16.22	00:90:E8:00:26:99		VPort26A			
VPort06	172.19.16.16	00:90:E8:06:11:02					

- Users can double click the selected VPort, or use the IE web browser to access the VPort's web-based manager (web server).

### Manual Address Assignment

If your VPort 26A-1MP is connected to a network that does not have a DHCP server, then you will need to configure the IP address manually. The default IP address of the VPort 26A-1MP is 192.168.127.100 and the default subnet mask is 255.255.255.0. Note that you may need to change your computer's IP address and subnet mask so that the computer is on the same subnet as the VPort.

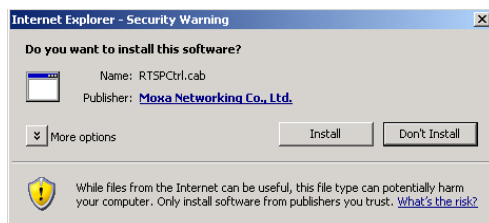
To change the IP address of the VPort manually, access the VPort's web server and navigate the **System Configuration** → **Network** → **General** page to configure the IP address and other network settings. Toggle the **Use fixed IP address** to ensure that the IP address you assign is not deleted each time the VPort is restarted.

### Step 2: Accessing the VPort 26A-1MP's web-based manager

Type the IP address in the web browser's address input box and then press enter.

### Step 3: Install the ActiveX Control Plug-in

A security warning message will appear the first time you access the VPort's web-based manager. The message is related to installing the VPort ActiveX Control component on your PC or notebook. Click **Yes** to install this plug-in to enable viewing of video images over the IE web browser.

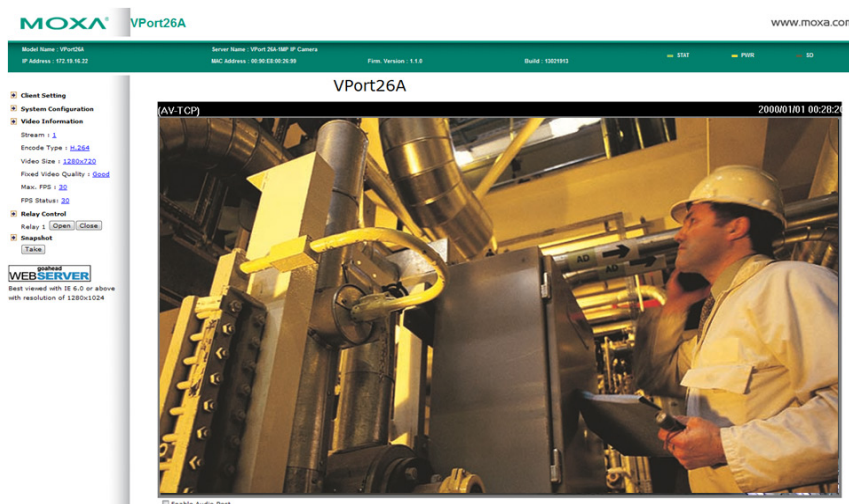


**NOTE** For Windows XP SP2 systems or later, the ActiveX Control component will be blocked for system security reasons. In this case, the VPort's security warning message window may not appear. Users should access the operating system control panel to unblock ActiveX controls or disable the security configuration to enable the installation of the VPort's ActiveX Control component.

### Step 4: Access the VPort 26A-1MP's web-based manager.

After installing the ActiveX Control component, enter the IP address of the VPort device to access its web-based controls; they should immediately appear. Check the following items to make sure the system was installed properly:

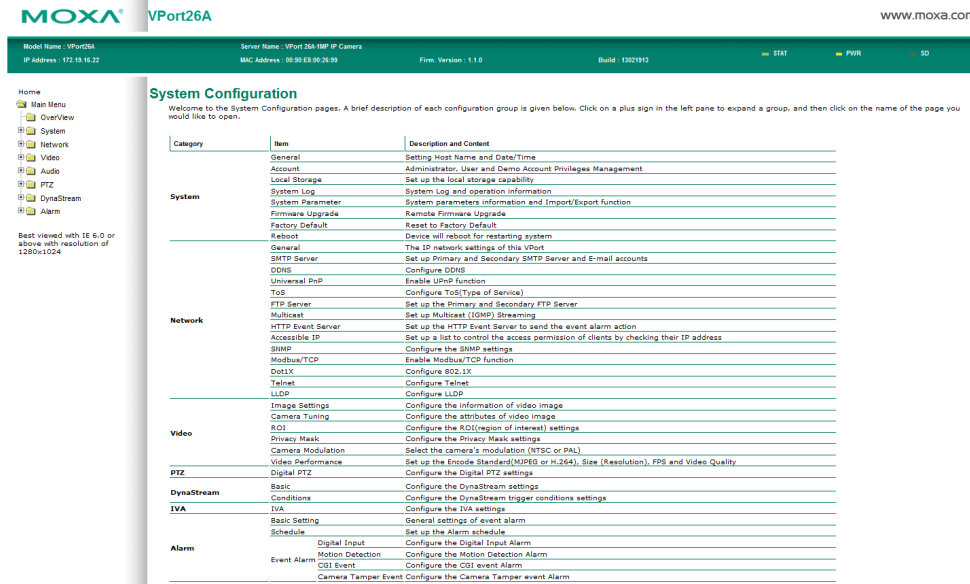
- Video Images
- Audio Sound (make sure your PC's or notebook's sound is turned on)
- Video Information



### Step 5: Access the VPort system configuration.

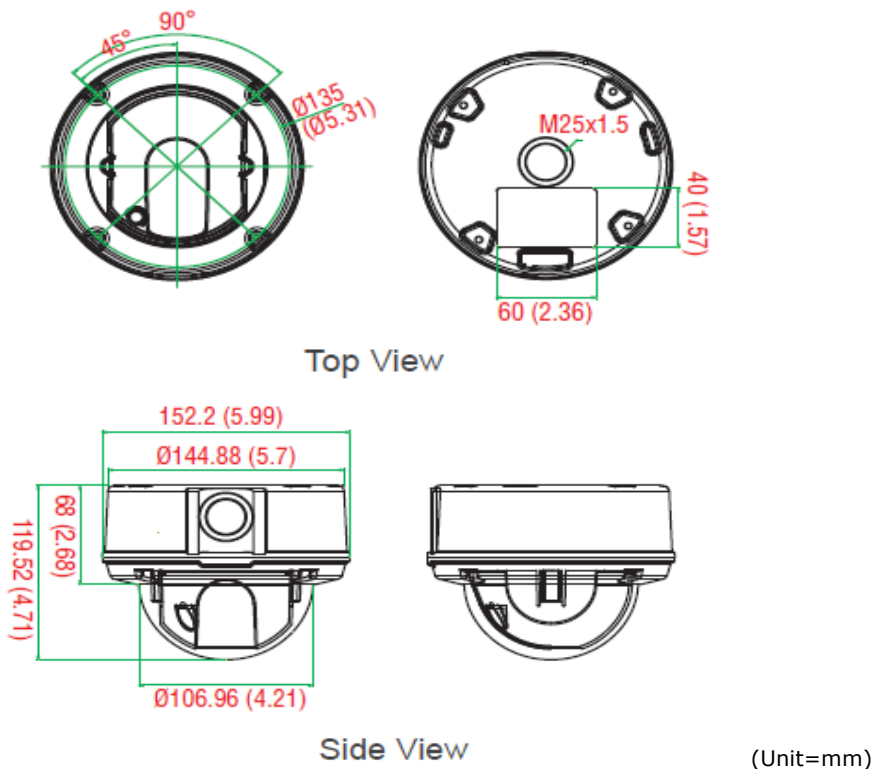
Click on **System Configuration** to display a system overview. The **Model Name**, **Server Name**, **IP Address**, **MAC Address** and **Firmware Version** will appear in the green bar at the top of the page. Use this information to review the installation details.

For details about configuration settings, check the User’s Manual on the software CD.



**NOTE** After accessing the VPort 26A-1MP’s web-based manager, administrators should access **System Configuration** → **System** → **Account** to set up the administrator’s password and enable the authentication function. The administrator account name is admin. An authentication window will pop up requesting the account name and password each time the VPort 26A-1MP is accessed.

## VPort 26A-1MP Dimensions



# Wiring Requirements



## ATTENTION

Be sure to disconnect the power cord before installing and/or wiring your Moxa VPort 26A-1MP.

Calculate the maximum possible current in each power wire and common wire. Observe all electrical codes dictating the maximum current allowable for each wire size.

If the current goes above the maximum ratings, the wiring could overheat, causing serious damage to your equipment.

You should also pay attention to the following:

- Use separate paths to route wiring for power and devices. If power wiring and device wiring paths must cross make sure the wires are perpendicular at the intersection point.  
NOTE: Do not run signal or communications wiring and power wiring in the same wire conduit. To avoid interference, wires with different signal characteristics should be routed separately.
- You can use the type of signal transmitted through a wire to determine which wires should be kept separate. The rule of thumb is that wiring that shares similar electrical characteristics can be bundled together.
- Keep input wiring and output wiring separate.
- It is strongly advised that you label wiring to all devices in the system when necessary.



## WARNING

This equipment is intended to be used in a Restricted Access Location.

## Accessing the VPort 26A-1MP's Web-based Manager

---

This chapter includes information about how to access the VPort 26A-1MP IP camera for the first time.

The following topics are covered in this chapter:

### ▣ **Functions Featured on the VPort's Web Homepage**

- VPort's Information
- IP Camera Name
- Camera Image View
- Audio Control
- Client Settings
- System Configuration
- Video Information
- Relay Control
- Snapshot

# Functions Featured on the VPort's Web Homepage

The homepage of the VPort's web console shows information specific to that VPort, the camera image, and configurations for the client and server.

**NOTE** The VPort's web homepage is best viewed in 1280 x 1024 screen resolution. This is because the camera image can be viewed at a resolution up to HD (1280x800). We strongly recommend using IE 6.0 (Microsoft Internet Explorer) or above to avoid incompatibility with the ActiveX Plug-in.



## VPort's Information

This section shows the VPort's model name, server name, IP address, MAC address and firmware version.

## IP Camera Name

A server name can be assigned to each server. Administrators can change the name in **System Configuration/System/General**. The maximum length of the sever name is 40 bytes.

## Camera Image View

The assigned image description and system date/time will be displayed in the caption above the image window. You may disable the caption or change the location of the image information in **System Configuration/Video/Image Setting**. Note that if the VPort's motion detection function is active, some windows in the video picture might be framed in red.

## Audio Control

The VPort 26A-1MP provides both audio input and audio output for voice over IP communication. Client users can directly enable and disable the audio input (a microphone, for example) by checking the box of **Enable Audio Post** on the VPort's web homepage. You may also use the Client Setting to disable the audio transmission.

## Client Settings

Users can configure the following functions in **Client Settings**.

**1. Encode standard:** Shows the encoding algorithm currently being used. VPort 26A-1MP features built-in 2 encode engine to generate a maximum of three simultaneous video streams. Each client can select the H.264 video streams from Stream 1, or the MJPEG/ H,264 video stream from Stream 2. To configure these video streams, please go to:

**System Configuration/Video/Video Performance.**

**2. Protocol Options:** Choose one of four protocols to optimize your usage—Multicast (RTSP or Push) or Unicast (UDP, TCP, HTTP).

- **Multicast** protocol can be used to send a single video stream to multiple clients. In this case, a lot of bandwidth can be saved since only one video stream is transmitted over the network. However, the network gateway (e.g., a switch) must support the multicast protocol (e.g., IGMP snooping). Otherwise, the multicast video transmission will not be successful.
  - **RTSP:** Enable the multicast video stream to be sent in RTSP control, which means the multicast video stream will be sent only it receives the client's request.
  - **Push:** Enable the multicast video stream to be sent in Push control, which means that after this setting is selected the multicast video stream will be sent continuously even without any client request.
- Unicast protocol is used to send a single video stream to one client.
  - **UDP** can be used to produce audio and video streams that are more real-time. However, some packets may be lost due to network burst traffic, and images may become blurred.
  - **TCP** can be used to prevent packet loss, which results in a more accurate video display. The downside of using TCP is that the real-time delay is worse than with UDP protocol.
  - **HTTP** can be used to prevent being blocked by a router's firewall. The downside of using HTTP is that the real-time delay is worse than with UDP protocol.
- **Network Interface** designates the connection interface for multicast video streams selection. The box lists the current NIC interfaces. Select which NIC interface will receive multicast streams.

Once the IP camera is connected successfully, Protocol Options will indicate the selected protocol. The selected protocol will be stored on the user's PC, and will be used for the next connection.

**NOTE** For multicast video stream settings, please refer to **System Configuration → Network → Multicast**.

### Client Setting

Channel 1

**Encode Standard**  
 Stream 1: H.264    Stream 2: MJPEG ▼

**Media Option**  
 Video/Audio    Video Only    Audio Only

**Protocol Option**  
 Multicast RTSP ▼    Unicast TCP ▼

Network Interface 192.168.127.30 ▼

**Save**

## System Configuration

A button or text link on the left side of the system configuration window only appears on the administrator's main page. For detailed system configuration instructions, refer to Chapter 4, **System Configuration**.

## Video Information

Users can easily monitor the current video performance by looking at the **Video Information** shown on the left side of the homepage. The following properties are shown: Stream, Video Size, Video Quality (Fixed bit rate or Fixed video quality), Max. FPS (frames per second), and (current) FPS Status. Users can select the target camera image to view each camera's video performance.

## Relay Control

The VPort 26A-1MP series has 1 relay output for external devices, such as alarms. Administrators and permitted users can click on **Open** to short the Common and Normal Open digital output pins, or click on **Close** to short the Common and Normal Close digital output pins.

## Snapshot

Users can take snapshot images for storing, printing, or editing by clicking the **Take** button. Save the image by rick-clicking and selecting **Save**.



# System Configuration

---

After installing the hardware, the next step is to configure the VPort 26A-1MP's settings. Users can configure by web console.

The following topics are covered in this chapter:

□ **System Configuration by Web Console**

- System
- Network
- Video
- Audio
- DynaStream™
- Alarm

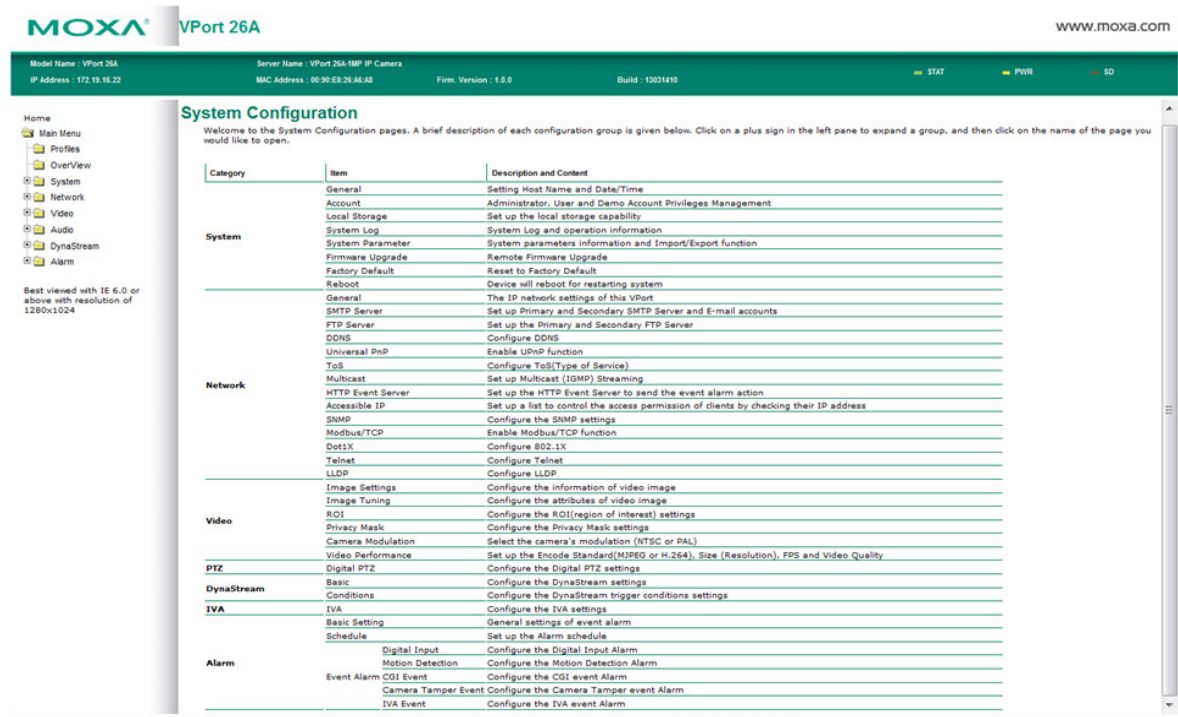
# System Configuration by Web Console

System configuration can be done remotely with Internet Explorer. To access the server, type the system configuration URL, <http://<IP address of Video Server>/overview.asp>, to open the configuration main page.

There are six configuration categories: **System**, **Network**, **DynaStream**, **Video**, **Audio**, and **Alarm**. A description of each configuration item is shown in the table below:

Category	Item	Description and Contents	
<b>System</b>	General	Set Host Name and Date/Time	
	Accounts	Administrator, User, and Demo Account Privileges Management	
	Local Storage	Configure the local storage settings	
	Diagnosis	Self-diagnostic report with system, communication, power, and LED status	
	System Log	System Log and operation information	
	System Parameter	System parameter information and Import/Export functions	
	Firmware Upgrade	Remote Firmware Upgrade	
	Factory Default	Reset to Factory Default	
	Reboot	Device will reboot for restarting system	
<b>Network</b>	General	The IP network settings of this VPort	
	SMTP Server	Set up Primary and Secondary SMTP Server and e-mail accounts	
	FTP Server	Set up the Primary and Secondary FTP Server	
	DDNS	Configure Dynamic DNS service	
	UPnP	Enable UPnP function	
	Multicast Setting	Set up Multicast (IGMP) Streaming	
	Accessible IP	Set up a list to control the access permission of clients by IP address	
	SNMP	Configure the SNMP settings	
	ToS	Configure ToS (Type of Service)	
	HTTP Event Server	Set up the HTTP Event Server to send the event alarm action	
	Modbus/ TCP	Enable Modbus/TCP function	
	IEEE 802.1X	Configure IEEE 802.1X function	
	Telnet	Configure Telnet	
	LLDP	Configure LLDP	
<b>Video</b>	Image Settings	Configure the information of video image	
	Camera Setting	Configure the attributes of video image	
	ROI	Configure the ROI(region of interest) settings	
	Privacy Mask	Configure the Privacy Mask settings	
	Video Performance	Set up the Encode Standard(MJPEG or H.264), Size (Resolution), FPS and Video Quality	
<b>Audio</b>	Audio Setting	Configure the Audio Source	
<b>PTZ</b>	Digital PTZ	Configure the Digital PTZ settings	
<b>DynaStream</b>	Basic	setup the video frame rate change once an alarm or event is triggered	
	Conditions	setup the event/ alarm to trigger the Dynastream, and the behavior after being triggered	
<b>Alarm</b>	System	General settings of alarm	
	Basic	Basic settings of event alarm	
	Schedule	Schedule setting of event alarm	
	Event Alarm	Digital input	Configure the Digital Input Alarm
		Motion Detection	Configure the motion detection alarm
		CGI Event	Set up the CGI event alarm
Camera Tamper		Configure the camera tamper alarm	

This table can also be found on the **System Configuration → Overview** webpage.



## System

### General Settings

On the **General Settings** page, administrators can set up the video **Server name** and the **Date and Time**, which is displayed in the image's caption.

### General Settings

Server name :

Server contact :

Server location :

Date and Time:

Keep current date and time

Sync with computer UTC time

PC Local Time: 2013/03/14 13:59:55

PC date:  [yyyy/mm/dd]

PC time:  [hh:mm:ss]

Manual

UTC Date:  [yyyy/mm/dd]

UTC Time:  [hh:mm:ss]

Automatic

1st NTP server:

2nd NTP server:

Time zone:  ▼

Update interval:  ▼

**Save**

**Server name**

Setting	Description	Default
Max. 40 characters	Use a different server name for each server to help identify the different servers. The name appears on the web homepage.	VPort 26A-1MP IP camera

**Server Contact**

Setting	Description	Default
Max. 40 characters	Edit the responsible operator for this camera server	Blank

**Server Location**

Setting	Description	Default
Max. 40 characters	Edit the location of this camera server	Blank

**Date and Time**

Setting	Description	Default
Keep current date and time	Use the current date and time as the VPort's time setting.	Keep current date and time
Sync with computer UTC time	Synchronize VPort's data and time setting with the local computer time.	
Manual	Manually change VPort's date and time setting.	
Automatic	Use the NTP server for changing VPort's date and time setting in a given period.	

**NOTE**

Select the **Automatic** option to force the VPort to synchronize automatically with timeservers over the Internet. However, synchronization may fail if the assigned **NTP server** cannot be reached, or the VPort is connected to a local network. Leaving the **NTP server** blank will force the VPort to connect to default timeservers. Enter either the Domain name or IP address format of the timeserver if the DNS server is available.

2 NTP servers may be set as backups, and update intervals can be configured from a minimum of 15 minutes to a maximum of one month.

Don't forget to set the **time zone** in local settings. Refer to Appendix G for your region's time zone.

## Account Privileges

Different account privileges are available for different purposes.

### Account Privileges

**Admin Password**

Admin Password:

Confirm Password:

*Note: Admin's password must be blank or 8 to 15 characters. If leave admin password blank will disable user authentication.*

**Save**

**User's Privileges**

No.	User Name	Password	Privileges
1	<input type="text"/>	<input type="password"/>	<input type="checkbox"/> Control RELAY1
2	<input type="text"/>	<input type="password"/>	<input type="checkbox"/> Control RELAY1
3	<input type="text"/>	<input type="password"/>	<input type="checkbox"/> Control RELAY1
4	<input type="text"/>	<input type="password"/>	<input type="checkbox"/> Control RELAY1
5	<input type="text"/>	<input type="password"/>	<input type="checkbox"/> Control RELAY1
6	<input type="text"/>	<input type="password"/>	<input type="checkbox"/> Control RELAY1
7	<input type="text"/>	<input type="password"/>	<input type="checkbox"/> Control RELAY1
8	<input type="text"/>	<input type="password"/>	<input type="checkbox"/> Control RELAY1
9	<input type="text"/>	<input type="password"/>	<input type="checkbox"/> Control RELAY1
10	<input type="text"/>	<input type="password"/>	<input type="checkbox"/> Control RELAY1

**Save**

#### Admin password

Setting	Description	Default
Admin Password (8 to 15 characters)	The administrator can type the new password in this box.	Default admin has no password
Confirm Password (8 to 15 characters)	If a new password is typed in the <b>Admin Password</b> box, you will need to retype the password in the <b>Confirm Password</b> box before updating the new password.	

**NOTE** The default account name for administrator is **admin**; the administrator account name cannot be changed.

#### User's Privileges

VPort products provide 10 user accounts for accessing the VPort.

Setting	Description	Default
User Name	Type a specific user name for user authentication.	None
Password	Type a specific password for user authentication.	
Privilege	Check the function boxes to assign privileges for users in Control Relay1	

**NOTE** The FPS of the video stream will be reduced as more and more users access the same VPort. Currently, the VPort 26A-1MP is only allowed to send 5 unicast video streams. Therefore, limit the number of users simultaneously accessing a VPort 26A-1MP to prevent performance problems.

## Local Storage

The VPort 26A-1MP supports an SD card slot (SDHC interface) for recording video when preconfigured events (alarms) occur. Administrators can download these recorded videos via FTP, or remove the SD card and directly copy the files via a card reader.

### Local Storage Setting

This VPort supports local storage function for recording the video once there is an event/alarm. Users can download the recoded video files via FTP access.

#### Local Video Recording Setting

Enable video recording once there is an event/alarm.

#### Record Stream

Stream2: H.264  Stream2: MJPEG

#### FTP Server Daemon

Enable FTP Server Daemon

Server Port

#### SD Card

Reboot the system once the mounting of SD card is failed

**Save**

#### Local Video Recording Setting

Setting	Description	Default
Enable video recording once there is an event/alarm	Enable the video recording action once there is an event/alarm	Enable

#### Recording Stream

Setting	Description	Default
Stream 2: H.264 or Stream 2: MJPEG	Select the H.264 or MJPEG of stream 2 for video recording	Stream 2: MJPEG

#### FTP Daemon

Setting	Description	Default
Enable FTP daemon	Enable the FTP service for downloading the recorded video files by the administrator	Enable
Server Port	The FTP server port number	21

#### SD card

Setting	Description	Default
Reboot the system when the SD card fails to mount	This function can reboot the system when the SD card mount fails to re-detect the SD mount.	Enable

**NOTE** The recorded videos will be stored in the "\VPortfolder" folder. Each recorded file is 10 seconds of video. These are AVI files for playback in a popular media player.

**NOTE** Due to file system limitations, the maximum number of files is 16584. When the number of files in the SD card is up to 16584, or the free space is under 100MB, the system will start to delete the oldest files.

## System Log

The system log contains useful information, including current system configuration and activity history with timestamps for tracking. Administrators can save this information in a file (system.log) by clicking the **Export to a File** button, or send the file by email by clicking the **Send a Report via Email** button. In addition, the log can also be sent to a **Log Server** for backup. The administrator can set up the Syslog Server 1 and Syslog server 2 below the system log list.

### System Log History

Index	Time	Type	Description
0001	Wed Feb 1 04:38:49 2006	SYS	System cold start...
0002	Wed Feb 1 04:38:49 2006	FTP	Stop listening...
0003	Wed Feb 15 14:17:20 2006	SYS	System cold start...
0004	Wed Feb 15 14:17:20 2006	FTP	Stop listening...
0005	Wed Feb 15 14:20:35 2006	SYS	System cold start...
0006	Wed Feb 15 14:20:35 2006	FTP	Stop listening...
0007	Wed Feb 15 14:23:51 2006	SYS	System cold start...
0008	Wed Feb 15 14:23:51 2006	FTP	Stop listening...
0009	Wed Feb 15 14:30:00 2006	SYS	System cold start...
0010	Wed Feb 15 14:30:00 2006	FTP	Stop listening...
0011	Wed Feb 15 14:32:00 2006	SYS	System cold start...

Send to system log Server

Syslog Server 1

Port Destination

Syslog Server 2

Port Destination

#### Send to system log server

Setting	Description	Default
Send to system log server	Enables sending the system log to the log sever.	Disable
Syslog Sever 1	The address of the first system log server.	Blank
Port Destination	The port number of first system log server.	514
Syslog Sever 2	The address of the second system log server.	Blank
Port Destination	The port number of second system log server.	514

**NOTE** A maximum of 500 lines is displayed in the log. Earlier data beyond the first 500 entries are still in the VPort's database; the administrator can export them at any time.

## System Parameters

The **System Parameters** page allows you to view all system parameters, which are listed by category. The content is the same as the VPort's sys\_config.ini file. Administrators can also save this information in a file (sys\_config.ini) by clicking the **Export to a File** button, or import a file by clicking the **Browse** button to search for a sys\_config.ini file and then clicking the **Import a System Parameter File** button to update the system configuration quickly.

### System Parameters

The screenshot shows a text area containing the following configuration file content:

```
VPort26A Configuration File
[security]
username01=admin
username02=
username03=
username04=
username05=
username06=
username07=
username08=
username09=
username10=
username11=
userpass01=
userpass02=
userpass03=
userpass04=
userpass05=
userpass06=
```

Below the text area are three buttons: **Export to a File**, **Import a System Parameter File**, and **Browse**. The **Import a System Parameter File** button is followed by an empty text input field.

**NOTE** The system parameter import/export functions allow the administrator to backup and restore system configurations. The Administrator can export this sys\_config.ini file (in a special binary format) for backup, and import the sys\_config.ini file to restore the system configurations of VPort IP cameras. System configuration changes will take effect after the VPort is rebooted.

## Firmware Upgrade

### Firmware Upgrade

The screenshot shows a file selection interface with an empty text input field, a **Browse** button, and an **Upgrade** button.

Take the following steps to upgrade the firmware:

**Step 1:** Press the **Browse** button to select the firmware file.

**NOTE** For the VPort 26A-1MP, the firmware file extension should be **.rom**.

**Step 2:** Click on the **Upgrade** button to upload the firmware to the VPort.

**Step 3:** The system will start to run the firmware upgrade process.

**Step 4:** Once **Firmware Update Success.....Reboot....** is displayed, please wait for few seconds for the VPort to reboot. The reboot process is finished once the **STAT** LED is lit continuously in green.

**NOTE** Upgrading the firmware will not change the original settings.



## Reset to Factory Default

From the "Reset to Factory Default" page, click on **OK** (as shown in the following figure) to reset the VPort to its factory default settings.

### Reset to Factory Default

Reset to Factory Default will restart the system and delete all the changes that have been made to the configuration. Are you sure you want to reset to factory default?

OK

**NOTE** All parameters will be reset to factory defaults when you use the Factory Default function. For this reason, if you want to keep a digital copy of the current configuration, remember to export the sys\_config.ini file before using the Factory Default function.

## Reboot

From the "Device Reboot" page, click **OK** (as shown in the following figure) to restart the VPort's system.

### Device Reboot

This device will reboot for restarting system. Are you sure you want to reboot?

OK

# Network

## General Network Settings

The **General Network Settings** page includes some basic but important network configurations that enable the VPort to be connected to a TCP/IP network.

### General Network Settings

**Access Method**

DHCP  
 DHCP + Auto configure  
 Use fixed IP address

**General Settings**

IP address   
 Subnet mask   
 Gateway   
 Primary DNS   
 Secondary DNS

**HTTP**

HTTP port   
 HTTPS port   
 HTTP mode

**RTSP Streaming**

RTSP port

Save

#### Access Method

VPort products support the DHCP protocol, which means that the VPort can get its IP address from a DHCP server automatically when it is connected to a TCP/IP network. The Administrator should determine if it is more appropriate to use DHCP, or assign a fixed IP.

Setting	Description	Default
DHCP	Get the IP address automatically from the DHCP server.	DHCP
DHCP + Auto configure	Get the IP address automatically from the DHCP server, and download the configurations from the TFTP server with Opt 66/67 mechanism.	
Use fixed IP address	Use the IP address assigned by the administrator.	

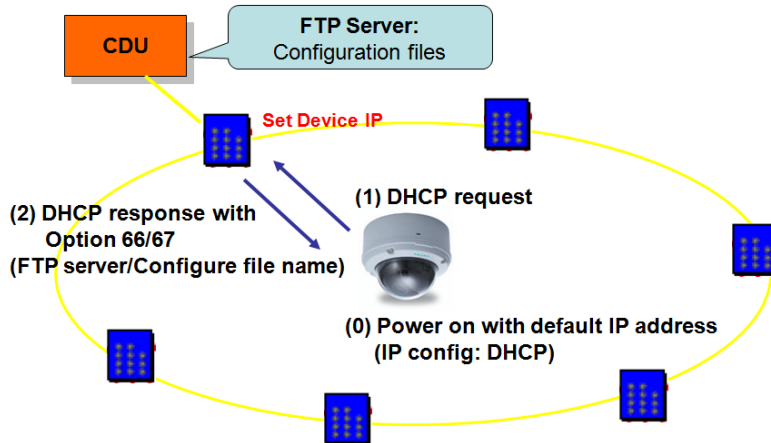
**NOTE** We strongly recommend that the administrator assign a fixed IP address to the VPort, since all of the functions and applications provided by the VPort are active when the VPort is connected to the network. Use DHCP to determine if the VPort's IP address may change when then network environment changes, or the IP address is occupied by other clients.

**Auto Configuration**

In a mass installation, it is time consuming to configure each of the many devices one by one. Therefore, DHCP Opt 66/67 provides a mechanism whereby configurations can be saved on a TFTP server. Once a new device is installed, the configurations can be downloaded to this new device automatically. By doing this, the installer can save a lot of time and efforts in mass device installation. Follow the steps below to use the auto-configuration function via Opt 66/67.

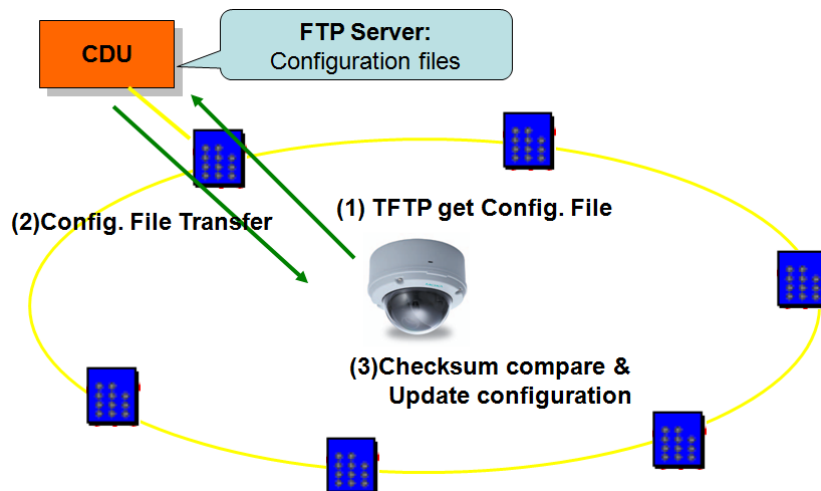
**Step 1:**

When VPort 26A-1MP enables the auto-configuration function, it will ask for the IP address from DHCP server, and the path of the TFTP server and configuration file.



**Step 2:**

Once VPort 26A-1MP completes the IP settings, it will acquire the configuration file from the TFTP server, and check if this configuration file is right or not.



**NOTE** For auto-configuration to work properly, the system should:

1. Have a DHCP Server that supports DHCP Opt 66/67 in the network switches and routers.
2. Have a TFTP server that supports the TFTP protocol

**General Settings**

Setting	Description	Default
IP address	Variable IP assigned automatically by the DHCP server, or fixed IP assigned by the Administrator.	192.168.127.100
Subnet mask	Variable subnet mask assigned automatically by the DHCP server, or a fixed subnet mask assigned by the Administrator.	255.255.255.0
Gateway	Assigned automatically by the DHCP server, or assigned by the Administrator.	Blank
Primary DNS	Enter the IP address of the DNS Server used by your network. After entering the DNS Server's IP address, you can input the VPort's url (e.g., www.VPort.company.com) in your browser's address field, instead of entering the IP address.	Obtained automatically from the DHCP server, or left blank in non-DHCP environments.
Secondary DNS	Enter the IP address of the DNS Server used by your network. The VPort will try to locate the secondary DNS Server if the primary DNS Server fails to connect.	Obtained automatically from the DHCP server, or left blank in non-DHCP environments.

**HTTP**

Setting	Description	Default
HTTP Port (80, or 1024 to 65535)	HTTP port enables connecting the VPort to the web.	80
HTTPS port (80, or 1024 to 65535)	HTTPS port number for communication encryption (do not set the same port number as the HTTP port)	443
HTTP mode	Select the HTTP transmission mode: HTTP Only or HTTP + HTTPS	HTTP Only

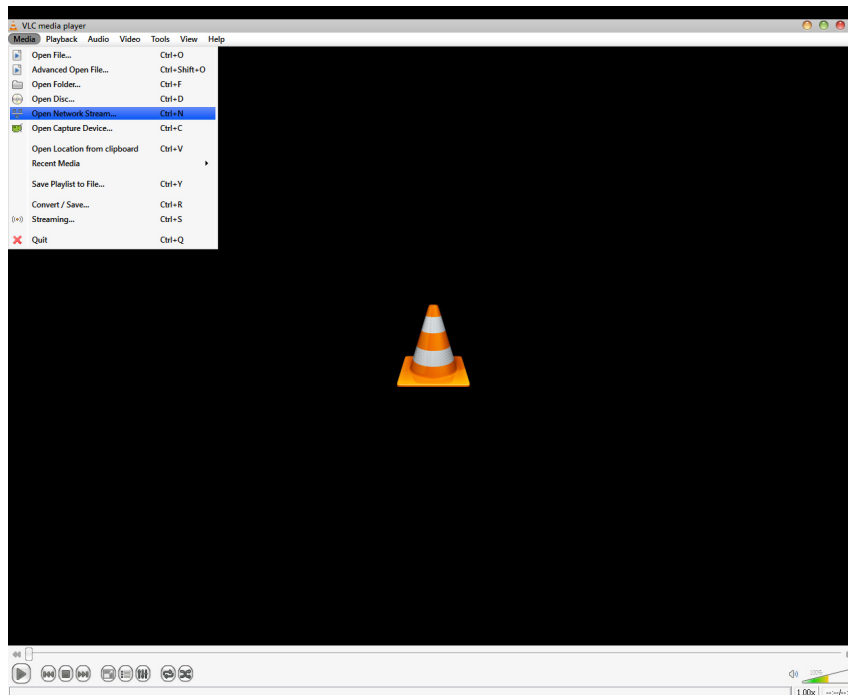
**RTSP Streaming**

The VPort 26A-1MP supports standard RTSP (Real Time Streaming Protocol) streaming, which means that all devices and software that support RTSP can directly acquire and view the video images sent from the VPort 26A-1MP without any proprietary codec or SDK installations. This makes network system integration much more convenient. For different connection types, the **access name** is different. For UDP and TCP streams, the access name is **udpStream**. For HTTP streams, the access name is **moxa-cgi/udpstream\_ch<channel number>**. For multicast streams, the access name is **multicastStream\_ch<channel number>**. You can access the media through the following **URL: rtsp://<IP address>:<RTSP port>/<Access name>** for software that supports RTSP.

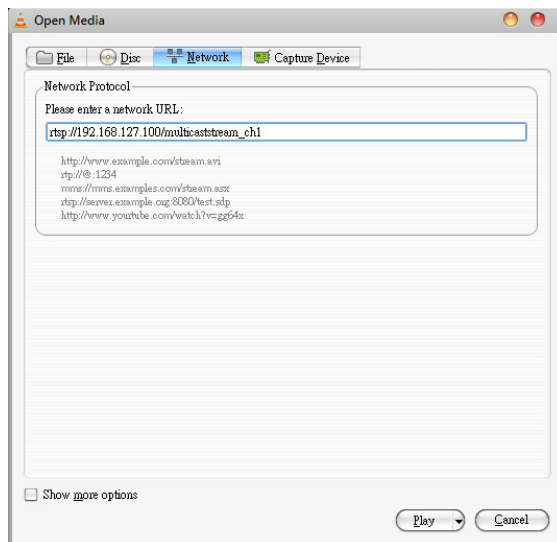
Setting	Description	Default
RTSP Port	An RTSP port is similar to an HTTP port, which can enable the connection of video/audio streams by RTSP.	554

The VLC media player is used here as an example of a RTSP streaming application:

**Step 1:** Open VLC Player and select **Media - Open network streaming**

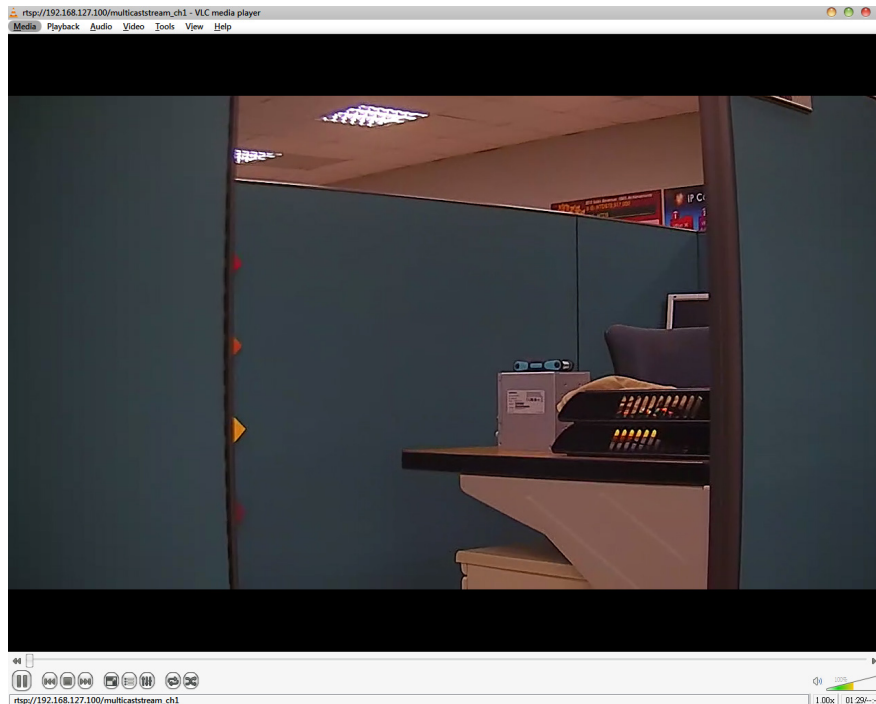


**Step 2:** When the following pop-up window appears, type the URL in the input box. E.g., type **rtsp://<VPort's IP address>[:<RTSP Port>]/udpstream\_ch1\_stream< 1 or 2>** or **rtsp://<VPort's IP address>[:<RTSP Port>]/multicaststream\_ch1\_stream<1 or 2>** **RTSP Port: 554** Is default, and then click on **OK** to connect to the VPort P06-1MP-M12.



**Step 3:** Wait a few seconds for VLC Player to establish the connection.

**Step 4:** After the connection has been established, the VPort's video will appear in the VLC Player display window.



**NOTE** The video performance of the VPort IP camera may vary when using other media players. For example, you will notice a greater delay when viewing the VPort's video from the VLC player compared to viewing it directly from the VPort's built-in web server. In addition, viewing the VPort's video from the VLC player through a router or Internet gateway could result in a broken connection.

**NOTE** For the time being, the VPort's RTSP video/audio stream can be identified and viewed by Apple QuickTime Ver. 6.5 and above, and the VLC media player. System integrators can use these 2 media players to view the VPort's video directly, without needing to use the VPort's SDK to create customized software.

**NOTE** When using RTSP, the video stream format should be H.264 or MPEG4. MJPEG does not support RTSP.

## SMTP Server and Email Account Settings

The VPort not only plays the role of a server, but can also connect to outside servers to send alarm messages and snapshots. If the administrator has set up some applications in either system information or alarm, the VPort will send out messages or snapshots once these conditions occur.

### SMTP Server and Email Account Settings

#### 1st SMTP Server and Sender Email

1st SMTP (mail) server	<input type="text"/>
1st SMTP account name	<input type="text"/>
1st SMTP password	<input type="text"/>
1st Sender's email address	<input type="text"/>

#### 2nd SMTP Server and Sender Email

2nd SMTP (mail) server	<input type="text"/>
2nd SMTP account name	<input type="text"/>
2nd SMTP password	<input type="text"/>
2nd Sender's email address	<input type="text"/>

*Note: There are 2 SMTP servers and sender Email accounts for sending system information and alarms. enable the email transmitting system.*

#### Recipient's Email

1st Recipient's Email Address:	<input type="text"/>
2nd Recipient's Email Address:	<input type="text"/>

*Note: There are 2 recipient email accounts for receiving system information and alarms.*

**Save**

#### 1st SMTP Server and Sender Email

Setting	Description	Default
1st SMTP (mail) server	SMTP Server's IP address or URL address.	None
1st SMTP account name	For security reasons, most SMTP servers require the account name and password to be authenticated.	None
1st SMTP password		None
1st Sender's email address	For security reasons, SMTP servers must see the exact sender email address.	None

**NOTE** Note that if the **Sender's email address** is not set, a warning message will pop up and the e-mail system will not be allowed to operate.

**NOTE** The **2nd SMTP Server** and Sender Email are backups that are used if the 1st SMTP Server and Sender Email fail when connecting or sending email.

Two recipient email accounts are available for receiving emails sent by the VPort. For redundancy, both addresses receive the sent messages and alarm snapshots simultaneously.

Setting	Description	Default
1st Recipient's Email Address	Email address of the 1st recipient.	None
2nd Recipient's Email Address	Email address of the 2nd recipient.	None



## Dynamic DNS

**DDNS (Dynamic Domain Name System)** is a combination of DHCP, DNS, and client registration. DDNS allows administrators to alias the VPort's dynamic IP address to a static hostname in any of the domains provided by the DDNS service providers listed on the VPort's Network/DDNS configuration page. DDNS makes it easier to access the VPort from various locations on the Internet.

### Dynamic DNS

The Dynamic DNS function allows your VPort to get a domain name linked to a changeable IP address w IP address if you want to remote access this VPort from Internet.

Enable DDNS

Provider

DynDNS.org(Dynamic) ▼

Host name

Username/E-mail

Password/Key

*Note: If you don't have a DDNS account, please follow the application procedure on the website listed above.*

Save

Update

Setting	Description	Default
Enable DDNS	Enable or disable DDNS function	Disable
Provider	Select the DDNS service providers, including DynDNS.org (Dynamic), DynDNS.org (Custom), TZO.com, and dhs.org.	None
Host Name	The Host Name you use to link to the VPort.	None
Username/ E-mail	The Username/E-mail and Password/Key are used to enable the service from the DDNS service provider (based on the rules of DDNS websites).	None
Password/ Key		None

**NOTE** Dynamic DNS is a very useful tool for accessing a VPort over the Internet, especially for xDSL connections with a non-fixed IP address (DHCP). The administrator and users can simplify connecting to a VPort with a non-fixed IP address, by using the unique host name in the URL to establish a connection with the VPort.

**NOTE** Different DDNS service providers have different application rules. Some applications are free of charge, but most require an application fee.

## Universal PnP

**UPnP (Universal Plug & Play)** is a networking architecture that provides compatibility among the networking equipment, software, and peripherals of the 400+ vendors that are part of the Universal Plug and Play Forum. This means that they are listed in the network devices table for the operating system (such as Windows XP) supported by this function. Users can link to the VPort directly by clicking on the VPort listed in the network devices table.

### Universal PnP

UPnP (Universal Plug & Play) is a function that provides compatibility among networking equipment, software and peripherals. By enabling this function, you can find this VPort directly from the operating system's network device list.

Enable UPnP

*Note: Please make sure your OS or software supports UPnP first if you want to enable VPort's UPnP function.*

Save

Setting	Description	Default
Enable UPnP	Enable or disable the UPnP function.	Enable

## QoS (ToS)

Quality of Service (QoS) provides traffic prioritization capabilities to ensure that important data is delivered consistently and predictably. The VPort can inspect layer 3 ToS (Type of Service) information to provide a consistent classification of the entire network. The VPort's ToS capability improves your industrial network's performance and determinism for mission critical applications.

### QoS(ToS)

Configure the QoS (ToS) to add the ToS (Type of Service) tag onto the video streaming data for transmitting this video stream with higher priority compared to other data.

Enable ToS

DSCP Value

**Save**

Setting	Description	Factory Default
Enable ToS	Enable the ToS for transmitting the video stream with the given priority	Disable
DSCP Value	Set the mapping table with different ToS values	0, 0

**NOTE** To configure the ToS values, map to the network environment settings for QoS priority service.

## FTP Server Settings

FTP is the other method available for the VPort to send alarm messages and snapshots.

### FTP Server Settings

**1st FTP server**

1st FTP server

1st FTP server port

1st FTP user name

1st FTP password

1st FTP remote folder

1st FTP passive mode

**2nd FTP server**

2nd FTP server

2nd FTP server port

2nd FTP user name

2nd FTP password

2nd FTP remote folder

2nd FTP passive mode

*Note: There are 2 FTP servers for sending alarms. At least one of them should be set up correctly to enable the FTP s;*

**Save**

#### 1st FTP Server

Setting	Description	Default
1st server	FTP server's IP address or URL address.	None
1st FTP server port	FTP server's authentication.	None
1st FTP user name		None
1st FTP remote folder	FTP file storage folder on the remote FTP server.	None
1st FTP passive mode	Passive transfer solution for FTP transmission through a firewall.	Disabled

**NOTE** The **2nd FTP Server** is a backup in case the 1st FTP Server fails to connect or has trouble sending files.

**NOTE** Whenever the system reboots, a system log will be sent by email or FTP to show the login status of the VPort. The system log will be sent to the Sender email address if the SMTP server settings are correct. To send the system log via FTP, the SMTP server should be erased since the E-mail system is used by default to transmit the system log.

**NOTE** For either e-mail or FTP, the information of the 1st server should be entered first. If the 1st server is not set, the related FTP or email will be cancelled. Note that it may take time to connect to the 2nd server after the first server fails, and this may affect some applications when adverse conditions occur too often.

## Multicast

The VPort 26A-1MP supports the advanced Multicast network protocol IGMP, which can greatly improve the efficiency of network traffic. In this section, we explain multicasts, multicast filtering, and how multicast can be implemented on your VPort.

### What is Multicast?

A multicast is a packet that is intended for “one-to-many” and “many-to-many” communication. Users explicitly request to participate in the communication by joining an end-station to a specific multicast group. If the network is set up correctly, a multicast can only be sent to an end-station or a subset of end-stations on a LAN or VLAN that belongs to the relevant multicast group. Multicast group members can be distributed across multiple subnetworks. Therefore, multicast transmissions can occur within a campus LAN or over a WAN. In addition, networks that support IP multicast send only one copy of the desired information across the network. The packets are only replicated if they reach a network node that links to two or more members of the multicast network. Transmitting packets in this way makes more efficient use of network bandwidth. A multicast packet is identified by the presence of a multicast group address in the destination address field of the packet’s IP header.

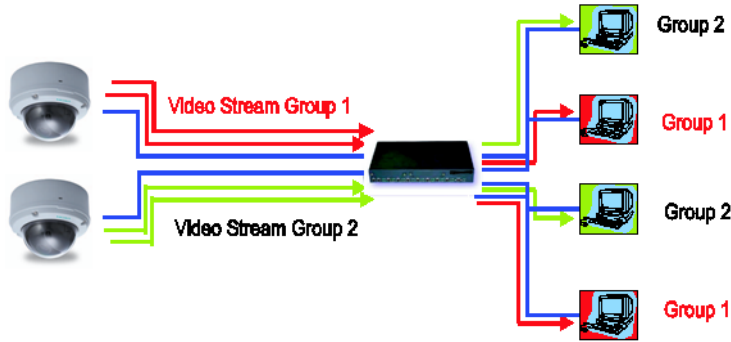
### Benefits of Multicast

The benefits of using IP multicast are that it:

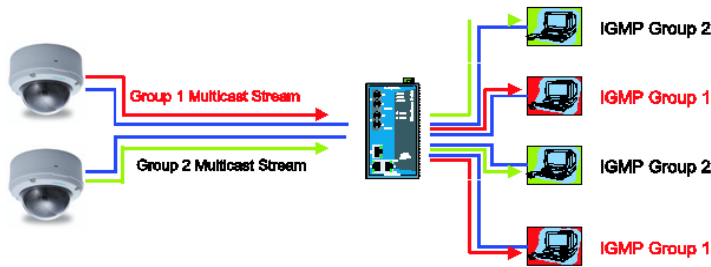
- Enables the simultaneous delivery of information to many receivers in the most efficient, logical way.
- Reduces the load on the source (for example, a server) because it does not need to produce multiple copies of the same data.
- Makes efficient use of network bandwidth and scales well as the number of participants or collaborators expands.
- Works with other IP protocols and services, such as Quality of Service (QoS).

There are situations where a multicast approach is more logical and efficient than a unicast approach. A typical use of multicasts is in video-conferencing, in which high volumes of traffic need to be sent to several end-stations simultaneously, but for which broadcasting that traffic to all end-stations would seriously reduce network performance. Several industrial automation protocols, such as Allen-Bradley, EtherNet/IP, Siemens Profibus, and Foundation Fieldbus HSE (High Speed Ethernet), use the multicast approach. These industrial Ethernet protocols use publisher/subscriber communications models by multicasting packets that could flood a network with heavy traffic. IGMP provides the ability to prune multicast traffic so that it travels only to those end destinations that require the traffic, thus reducing the amount of traffic on the Ethernet LAN.

**The network WITHOUT Multicast**



**The network WITH Multicast**



**NOTE** The VPort is the source that delivers the multicast video stream. To benefit from the Multicast protocol, the gateway or network switch should support the multicast filtering function (such as IGMP Snooping) so that the multicast stream is delivered correctly and precisely. To learn more about IGMP Snooping, refer to the Moxa EtherDevice™ series Industrial Ethernet Switch user’s manual.

### Configuring Multicast Settings

**Multicast Settings**

Stream 1		Stream 2	
Multicast group address	<input type="text" value="239.127.0.100"/>	Multicast group address	<input type="text" value="239.127.0.100"/>
Multicast video port	<input type="text" value="5556"/>	Multicast video port	<input type="text" value="5560"/>
Multicast audio port	<input type="text" value="5558"/>	Multicast audio port	<input type="text" value="5562"/>
Multicast TTL	<input type="text" value="128"/>	Multicast TTL	<input type="text" value="128"/>
Continuous Multicast Push	<input type="checkbox"/> Enable	Continuous Multicast Push	<input type="checkbox"/> Enable

Setting	Description	Default
Multicast group address	Multicast Group address for sending video stream.	239.127.0.100
Multicast video port	Video port number.	Stream 1: 5556 Stream 2: 5560
Multicast audio port	Audio port number.	Stream 1: 5558 Stream 2: 5562
Multicast TTL	Multicast-TTL (Time-to-live) threshold. There is a certain TTL threshold defined for each network interface or tunnel. A multicast packet’s TTL must be larger than the defined TTL for that packet to be forwarded across that link.	128
Continuous Multicast Push	Enable PUSH control of the multicast video stream	Disable

## HTTP Event Server

The VPort can send the customized alarm actions and messages to the HTTP Event Servers, which allows users to design a customized alarm system.

### HTTP Event Servers

VPort can send the customized alarm actions and messages to the HTTP Event Servers capability for the users designing the customized alarm system.

**Hostname**   
**Server 1**   
 User name:   
 Password:   
**Server 2**   
 User name:   
 Password:   
**Server 3**   
 User name:   
 Password:   
**Server 4**   
 User name:   
 Password:

Setting	Description	Factory Default
Host Name	User-defined name for identification	Blank
Server 1, 2, 3, 4	The server's URL address with complete CGI commands Ex. http:// http event server:Port/CGI_Name	Blank
User name	The account name for accessing the HTTP server	Blank
Password	The password for accessing the HTTP server	Blank

Once the Http Alarm is triggered, the VPort will send the following HTTP commands to the HTTP event servers.

```

GET CGI_Name?address=<Hostname or IP Address>&[Custom CGI] HTTP/1.0\r\n
User-Agent: IP camera V1.1\r\n
[Authorization: Basic <Base64(username:password)>\r\n]
Host: <HTTP Server IP Address>\r\n
Connection: Keep-Alive\r\n
\r\n

```

## Accessible IP List

The VPort uses an IP address-based filtering method to control access to the VPort.

### Accessible IP List

Enable accessible IP list ("Disable" will allow all IPs to connect)

Index	IP	NetMask
1	<input type="text"/>	<input type="text"/>
2	<input type="text"/>	<input type="text"/>
3	<input type="text"/>	<input type="text"/>
4	<input type="text"/>	<input type="text"/>
5	<input type="text"/>	<input type="text"/>
6	<input type="text"/>	<input type="text"/>
7	<input type="text"/>	<input type="text"/>
8	<input type="text"/>	<input type="text"/>
9	<input type="text"/>	<input type="text"/>
10	<input type="text"/>	<input type="text"/>

**Save**

Accessible IP Settings allow you to add or remove "Legal" remote host IP addresses to prevent unauthorized access. Access to the VPort is controlled by IP address. That is, if a host's IP address is in the accessible IP table, then the host will be allowed access to the VPort. Administrators can allow one of the following cases by setting this parameter:

- Only one host with a specific IP address can access the VPort. Enter "IP address/255.255.255.255" (e.g., 192.168.1.1/255.255.255.255)
- Hosts on a specific subnet can access the VPort. Enter "IP address/255.255.255.0" (e.g., "192.168.1.0/255.255.255.0")
- Any host can access the VPort. Disable this function.

Refer to the following table for more configuration examples.

Allowable Hosts	Input Formats
Any host	Disable
192.168.1.120	192.168.1.120/255.255.255.255
192.168.1.1 to 192.168.1.254	192.168.1.0/255.255.255.0
192.168.0.1 to 192.168.255.254	192.168.0.0/255.255.0.0
192.168.1.1 to 192.168.1.126	192.168.1.0/255.255.255.128
192.168.1.129 to 192.168.1.254	192.168.1.128/255.255.255.128

## SNMP

The VPort 26A-1MP supports three SNMP protocols. The available protocols are SNMP V1, SNMP V2c, and SNMP V3. SNMP V1 and SNMP V2c use a community string match for authentication, which means that SNMP servers access all objects with read-only or read/write permissions using the community string public/private (default value). SNMP V3, which requires you to select an authentication level of MD5 or SHA, is the most secure protocol. You can also enable data encryption to enhance data security. SNMP security modes and security levels supported by the VPort are shown in the following table. Select one of these options to communicate between the SNMP agent and manager.

Protocol Version	Security Mode	Authentication Type	Data Encryption	Method
SNMP V1, V2c	V1, V2c Read Community	Community string	No	Use a community string match for authentication
	V1, V2c Write/Read Community	Community string	No	Use a community string match for authentication
SNMP V3	No-Auth	No	No	Use account with admin or user to access objects
	MD5 or SHA	MD5 or SHA	No	Provides authentication based on HMAC-MD5, or HMAC-SHA algorithms. 8-character passwords are the minimum requirement for authentication.
	MD5 or SHA	MD5 or SHA	Data encryption key	Provides authentication based on HMAC-MD5 or HMAC-SHA algorithms, and data encryption key. 8-character passwords and a data encryption key are the minimum requirements for authentication and encryption.

## Configuring SNMP Settings

The following figures indicate which SNMP parameters can be configured. A more detailed explanation of each parameter is given below the figure.

### SNMP

#### SNMP Read/Write Settings

SNMP Versions V1, V2c, V3 ▼

V1,V2c Read Community

V1,V2c Write/Read Community

V3 Admin Read/Write Auth. Mode No-Auth ▼

V3 Admin Read/Write Private Mode  Key

#### Trap Settings

1st Trap Server IP/Name

1st Trap Community

2nd Trap Server IP/Name

2nd Trap Community

#### Private MIB information

Object ID enterprise.8691.8.4.13

Save



## SNMP Read/ Write Settings

### SNMP Versions

Setting	Description	Default
V1, V2c, V3	Select SNMP protocol versions V1, V2c, V3 to manage the switch	V1, V2c, V3
V1, V2c	Select SNMP protocol versions V1, V2c to manage the switch	
V3 only	Select SNMP protocol versions V3 only to manage the switch	

### V1, V2c Read Community

Setting	Description	Default
V1, V2c Read Community	Use a community string match for authentication, which means that the SNMP agent accesses all objects with read-only permissions using the community string <b>public</b> .	public (max. 30 characters)

### V1, V2c Read/Write Community

Setting	Description	Default
V1, V2c Read/Write Community	Use a community string match for authentication, which means that the SNMP agent accesses all objects with read-only permissions using the community string <b>public</b> .	public (max. 30 characters)

For SNMP V3, there are two levels of privilege for different accounts to access the VPort. Admin privilege allows access and authorization to read and write MIB files. User privilege only allows reading the MIB file, but does not authorize writing to the file.

### Root Auth. Type (For SNMP V1, V2c, V3 and V3 only)

Setting	Description	Default
No-Auth	Use admin. account to access objects. No authentication.	No
MD5-Auth	Provide authentication based on the HMAC-MD5 algorithms. 8-character passwords are the minimum requirement for authentication.	No
SHA- Auth	Provide authentication based on the MAC-SHA algorithms. 8-character passwords are the minimum requirement for authentication.	No

### Root Data Encryption Key (For SNMP V1, V2c, V3 and V3 only)

Setting	Description	Default
Enable	8-character data encryption key is the minimum requirement for data encryption. Maximum 30-character encryption key.	No
Disable	No data encryption.	No

### User Auth. Type (For SNMP V1, V2c, V3 and V3 only)

Setting	Description	Default
No-Auth	Use account of admin or user to access objects. No authentication.	No
MD5-Auth	Provide authentication based on the HMAC-MD5 algorithms. 8-character passwords are the minimum requirement for authentication.	No
SHA- Auth	Provide authentication based on the HMAC-SHA algorithms. 8-character passwords are the minimum requirement for authentication.	No

**User Data Encryption Key (For SNMP V1, V2c, V3 and V3 only)**

Setting	Description	Default
Enable	8-character data encryption key is the minimum requirement for data encryption. Maximum 30-character encryption key.	No
Disable	No data encryption.	No

**Trap Settings**

Setting	Description	Default
Trap Server IP/Name	Enter the IP address or name of the Trap Server used by your network.	No
Trap Community	Use a community string match for authentication; Maximum of 30 characters.	No

**Private MIB information**

The private SNMP Object ID of the VPort is the enterprise value: 8691.8.4.13. This number cannot be changed.

**NOTE** The MIB file is MOXA-VPORT26-MIB.mib (or.my). You can find it on the software CD or the download center of the Moxa website.

**NOTE** To configure the ToS values, map to the network environment settings for QoS priority service.

## HTTP Event Server

The VPort can send the customized alarm actions and messages to the HTTP Event Servers, which allows users to design a customized alarm system.

### HTTP Event Servers

VPort can send the customized alarm actions and messages to the HTTP Event Server capability for the users designing the customized alarm system.

**Hostname**   
**Server 1**   
 User name:   
 Password:   
**Server 2**   
 User name:   
 Password:   
**Server 3**   
 User name:   
 Password:   
**Server 4**   
 User name:   
 Password:

Setting	Description	Factory Default
Host Name	User-defined name for identification	Blank
Server 1, 2, 3, 4	The server's URL address with complete CGI commands Ex. http:// http event server:Port/CGI_Name	Blank
User name	The account name for accessing the HTTP server	Blank
Password	The password for accessing the HTTP server	Blank

Once the Http Alarm is triggered, the VPort will send the following HTTP commands to the HTTP event servers.

```
GET CGI_Name?address=<Hostname or IP Address>&[Custom CGI] HTTP/1.0\r\n
User-Agent: IP camera V1.1\r\n
[Authorization: Basic <Base64 (username:password)>\r\n]
Host: <HTTP Server IP Address>\r\n
Connection: Keep-Alive\r\n
\r\n
```

## ModBus/TCP

Modbus is a serial communications protocol which is often used to connect a supervisory computer with a remote terminal unit (RTU) in supervisory control and data acquisition (SCADA) systems. To transmit Modbus over a TCP/IP network, a standard Modbus/TCP protocol is provided. With the support of the Modbus/TCP protocol, the SCADA/HMI system can directly communicate with the VPort to acquire its operational status.

### ModBus/TCP

Modbus is a serial communications protocol for the industrial devices' communications with the SCADA/HMI system. With the Modbus/TCP protocol, the SCADA/ HMI system can directly communicate with VPort for acquiring the working status.

Enable ModBus/TCP

**Save**

Setting	Description	Factory Default
Enable Modbus/TCP	Enable the Modbus/TCP protocol	Enable

**NOTE** For Modbus address table, please refer to the Modbus\_Address\_Define.pdf. You can find it on the software CD or the download center of the Moxa website.

The VPort 26A-1MP supports advanced IEEE 802.1X network authentication function. There are three types of 802.1X supported: EAP-MD5, EAP-PEAP/MSCHAPv2 and EAP-TLS. The Administrator should choose the appropriate type base on the network system situation.

#### EAP-MD5

**IEEE 802.1X**

Enable 802.1X

EAP Method:

Username:

Password:

**Save**

#### EAP-PEAP/MSCHAPv2

**IEEE 802.1X**

Enable 802.1X

EAP Method:

Identify:

Password:

CA Certificate:  **Browse** **Upgrade**

CA Certificate Status: no file

**Save**

**EAP-TLS**

**IEEE 802.1X**

Enable 802.1X

EAP Method:

Identify:

CA Certificate:

CA Certificate Status: no file

Client Certificate:

Client Certificate Status: no file

Client Private Key:

Client Private Key Status: no file

Client Private Key Password:

**NOTE** Please consult an expert or your network administrator for the configurations of 802.1X if you have trouble in it.

**Telnet**

Use this option to Enable/Disable the telnet function.

**Telnet**

Enable Telnet

**LLDP**

LLDP is an OSI Layer 2 protocol defined by IEEE 802.11AB. LLDP standardizes the self-identification advertisement method, and allows each networking device, such as a Moxa IP camera or managed switch, to periodically send its system and configuration information to its neighbors. Because of this, all LLDP devices are kept informed of each other’s status and configuration, and with SNMP, this information can be transferred to some network management software, such as Moxa’s MXview for auto-topology and network visualization.

From the VPort’s web interface, you can enable or disable LLDP, and set the LLDP transmit interval. In addition, you can view each VPort’s neighbor-list, which is reported by its network neighbors. Most importantly, enabling the LLDP function allows Moxa’s MXview to automatically display the network’s topology and system setup details for the entire network.

**LLDP (IEEE 802.1AB)**

Operating Mode:

Transmit interval:  second(s) (1 ~ 3600 secs)

Setting	Description	Factory Default
Operation Mode	Choose the operation mode of LLDP: Disabled, Transmit only, Receive only, and Transmit and receive.	Transmit and receive
Transmit interval	Sets the transmit interval of LLDP messages, in seconds.	30

# Video

## Image Settings

### Image Settings

Image Information

Description:

Image Appearance

Image Information:

Not Shown

Shown on the caption

Shown on the image

Position X:  (0~400)

Position Y:  (0~300)



#### Image Information Setting

	Description	Default
Description (max. of 14 characters)	The customized description shown on the caption to identify this video camera.	None

#### Image Appearance Setting

	Description	Default
Image Information	To determine what style of image information is being shown. Includes <b>Not Shown, Show on the Caption and Show on image</b>	Not Shown

#### Image Appearance Position

The position of the Image Appearance window can be changed by configuring Position X (0 to 400) and Position Y (0 to 300).

## Camera Setting

A few camera parameters can be configured for improving image quality according to the environment.

### Camera Setting

**Environment**

Outdoor  Indoor

**Image Adjustments**

Saturation: +0    Contrast: +0    Sharpness: +0

AGC: 16X    BLC: Middle    AWB: ATW

Appearance: Normal

**Digital Noise Reduction**

Enable

**Day / Night**

Day (color)

Night (Black and white)

Light Sensor (automatic switch the Day/ Night mode)

Switch lux level: L1

Detect duration: 3 sec (1 ~ 60sec)

DI Control: Pull High

Trigger relay output when day/night mode switch

Relay status is: Normal Close when day mode

Relay status is: Normal Open when night mode

**Auto Exposure Shutter**

Auto Level: +0


**WDR**

WDR: Level 8

Save Reset

**Image View**

(AV-TCP) 2000/01/01 00:34:56



### Environment

Setting	Description	Default
Environment	Choose what kind of environment will VPort camera be installed, optimized parameters will be applied to best fit your choice	Outdoor

### Image Adjustment

Setting	Description	Default
Saturation	Tune the image attribute for the user's preference for -4 to +6	0
Contrast & Sharpness	Tune the image attribute for the user's preference for -4 to + 4	0
Auto Gain Control (AGC)	This AGC function provides clear image in low light condition. This controls an amplifier that is used to boost the video signal when the light dims so as to increase the camera's sensitivity. In some bright environment, the amplifier may be overloaded and which may distort the video signal. So, it is necessary to monitor the signal level with AGC control circuit and AGC has to be switched off in case of necessity.	16x
Black level control (BLC)	This function changes the black level of the image. Higher settings will make the image brighter, and lower settings will make the image darker.	Middle
AWB (Auto White Balance)	In most condition, you are suggested to choose ATW and allows the camera to do automatic white balance adjustment. AWB is suggested when your camera is watching a scene with a certain color occupy most for the view. If you like to use AWB, follow below step. Step 1: Move the camera to the white color in the real environment with normal lighting Step 2: Select AWB in the page and then press "Save" Step 3: Move the camera back to the scene you are going to watch. Then select the ATW for correcting the image color	ATW

Setting	Description	Default
Appearance	Normal – Normal view Mirror – Image will be displayed as in a mirror Flip – First 180 degree rotation and then do mirrored display 180 Rotation – Display image after 180 degree rotation	Normal

**Digital Noise Reduction**

Setting	Description	Default
Enable	Enable digital noise reduction function	Off

**Day/Night**

Setting	Description	Default
Day (Color)	Manually set the camera to day mode (color mode)	checked
Night (Black & White)	Manually set the camera to night mode (monochrome mode)	Unchecked
Light Sensor (automatic switch the Day/ Night mode)	Lets the camera light sensor switch between day and night modes based on ambient illumination level. Set the switch lux level (from level 1 to level 5), and detection duration (1 to 60 seconds) to define how long the illumination level should persist before switching.	Unchecked
DI Control	Switch day/night when by DI <ul style="list-style-type: none"> <li>• Pull High: camera will do day/night switch whenever DI status is high</li> <li>• Pull Low: camera will do day/night switch whenever DI status is low</li> </ul>	unchecked
Trigger relay output when day/night mode switch	Trigger relay output when day/night mode switch, relay status for day/night mode could be configured separately	unchecked

**Auto Exposure Shutter**

Setting	Description	Default
Auto Level	Higher level will extend auto shutter speed slower, hence brighter image; lower level will do opposite.	0

**WDR**

Setting	Description	Default
WDR (Wide Dynamic Range)	Higher level means more strong WDR effect. Choose higher WDR level when you have strong lighting and dark area co-exist in one video scene	Level 8

**ROI (Region of Interest)**


When network bandwidth is limited, HD video stream in realtime may be too huge for the network to bear, and in that condition, VPort IP camera is able to automatically allocate available bandwidth to those parts of video that of your bigger interest. For example, when watching a factory entrance, camera can allocate more bandwidth for entry way while only allocate minimum bandwidth for the wall in the scene.



## ROI Settings

ROI (Region of Interest)

Enable ROI



[AV-UDP] 2000/01/01 05:48:55

Region 1 Priority Low

Region 2 Priority Low

Region 3 Priority Low

**Save**

### ROI

Setting	Description	Default
Enable	Enable ROI function	Off
Region 1/2/3	Assign priority to up to 3 different regions in the camera view.	unchecked
High/Medium/Low	High – camera will reserve a majority of bandwidth for this part of video Medium – camera will reserve moderate bandwidth for this part of video Low – camera will reserve only minimum bandwidth for this part of video	Low

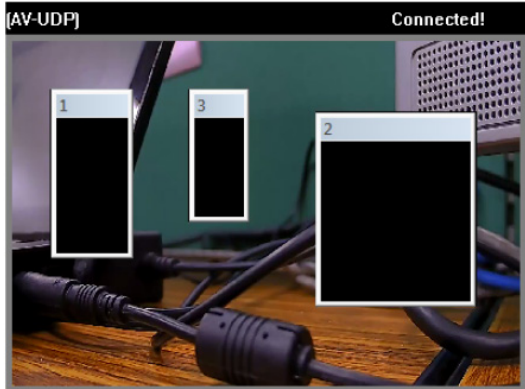
## Privacy mask

VPort IP camera supports up to 3 privacy mask areas on image for privacy protection.

## Privacy Mask Settings

Privacy Mask

Enable Privacy Mask



[AV-UDP] Connected!

Mask 1

Mask 2

Mask 3

**Save**

**Privacy Mask**

Setting	Description	Default
Enable	Enable privacy mask function	Off
Mask 1/2/3	Enable up to 3 different privacy mask area. Once enabled, you can drag mask area directly in the camera scene	unchecked

**NOTE** There is no way to recover masked video no matter in live or playback, make sure you use this function carefully

**Video Performance**

The VPort IP camera can send a maximum of three simultaneous video streams: two H.264 and one MJPEG. In fact, the VPort IP camera has two encoder engines. The first encoder engine can generate one H.264 video stream, and this H.264 video stream is a completely independent video stream, which means its resolution, FPS and video quality can be configured independently. The second encoder engine can generate one H.264 video stream and one MJPEG video stream. Because both the H.264 and MJPEG video streams come from the same encoder engine, their resolution must be the same, but the FPS and the Video Quality can be configured separately. The administrator can set the Resolution, Max. Frame Rate and Video Quality on this web page.

**Encode Standard, Resolution (Size), Frame Rate and Quality**

Resolution Type  
 NTSC  PAL

Streams	Codec Type	Resolution	Max FPS	Quality
<input checked="" type="checkbox"/> 1	H264	1280x720	30	<input checked="" type="radio"/> Fixed quality (VBR) Good <input type="radio"/> Fixed bit rate(CBR) 4000 (400~5400)Kbps
<input type="checkbox"/> 2	H264	720x480	30	<input checked="" type="radio"/> Fixed quality (VBR) Good <input type="radio"/> Fixed bit rate(CBR) 4000 (400~5400)Kbps
<input checked="" type="checkbox"/> 2	MJPEG		30	Fixed quality Good

Limit the maximum throughput of each connection in 20 (4~5000)kbits within 5 (1~1000)milliseconds

**Save**

**Resolution Type**

For meeting different CCTV resolution requirement, there are **NTSC** or **PAL** mode can be selected.

**NOTE** Due to there is only one video source, different resolution will have different viewing angle.

**Streams**

Setting	Description	Default
Enable the video streams	To enable the VPort to send this video streams or not.	Enable stream 1: H.264 and stream 2: MJPEG

**Codec Type**

This codec type shows the codec of each video stream.

**Resolution**

The VPort 26A-1MP supports 5 different resolutions: WXGA, HD, SVGA, Full D1, 4CIF, VGA, CIF, and QCIF.

Setting	Description	Default
Select the image size	8 image resolutions (size) are provided. The administrator can choose each option with NTSC or PAL modulation.	1280x720

Resolution	NTSC	PAL
WXGA	1280x800	1280x800
HD	1280x720	1280x720
SVGA	800 x 600	800x 600
Full D1	720 x 480	720 x 576
4CIF	704 x 480	704 x 576
VGA	640 x 480	640 x 480
CIF	352 x 240	352 x 288
QCIF	176 x 112	176 x 144

**Max. FPS (Frame per second)**

Setting	Description	Default
Maximum frame rate	The maximum frame rate is different to accommodate different modulations of video input. Administrators can also set up the maximum frame rate to optimize bandwidth use. NTSC: 1, 3, 5, 10, 15, 20, 25, 30 PAL: 1, 3, 5, 8, 12,16, 20, 25	30 for NTSC, 25 for PAL

**NOTE** Frame rate (frames per second) is determined by the resolution, image data size (bit rate), and transmission traffic status. The Administrator and users can check the frame rate status in the **FPS Status** on the VPort's web homepage.

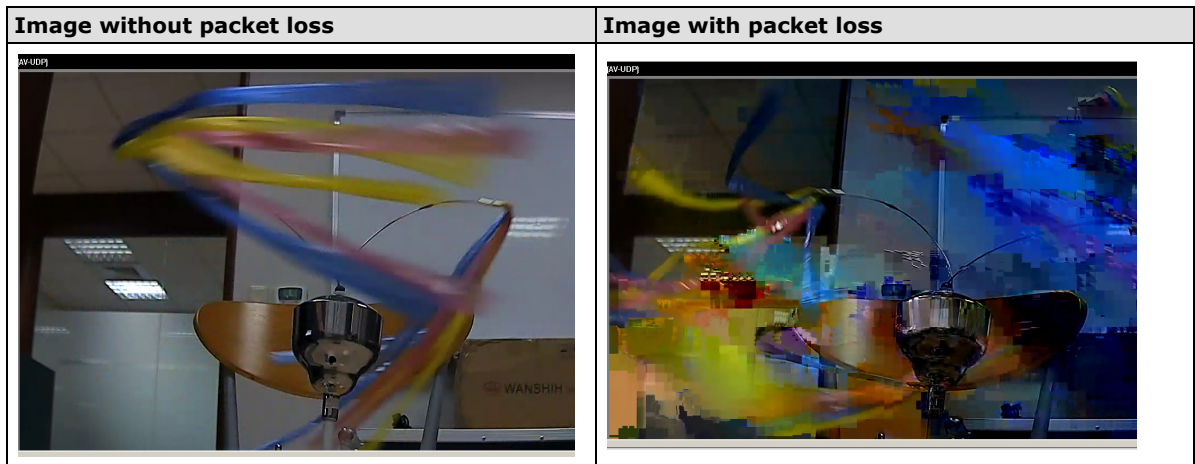
**Video Quality Control**

Video Quality Control is used to optimize the bandwidth of the MPEG4 video stream. There are 2 modes for video quality control.

Setting	Description	Default
Fixed bit rate (Only for H.264)	The administrator can fix the bandwidth to tune the video quality and FPS (frames per second) to the optimum combination. The VPort will tune the video performance according to the configured bandwidth. A higher bandwidth means better quality and higher FPS.	4000Kbps in 1280x720 resolution
Fixed Quality	The administrator can set the image quality to one of 5 standards: <b>Medium, Standard, Good, Detailed, or Excellent</b> . The VPort will tune the bandwidth and FPS automatically to the optimum combination.	Good

**CBR Pro™**

General CBR (constant bit rate) configuration limits throughput to 1 second, but since video streaming is designed to transmit immediately to shorten latency time, network throughput may experience a burst in action during short time periods, in which case packet loss will occur if the network bandwidth buffer is not large enough. When packet loss occurs, images will show a mosaic effect. For this reason, the VPort 26A-1MP supports an advanced CBR Pro™ function, which can enable the flow control of image packets to ensure no packet loss for limited bandwidth transmissions, such as on xDSL or wireless networks.



Setting	Description	Default
Limits the maximum throughput of each connection in <input type="checkbox"/> kbits within <input type="checkbox"/> milliseconds	Configure how much throughput is allowed on the network within the given number of milliseconds. For example, if the configuration is 20 kbits within 5 milliseconds, the video packet throughput will be limited to 20 kbits within 5 milliseconds.	20 kbits within 5 milliseconds.

**NOTE** The image quality, FPS, and bandwidth are influenced significantly by network throughput, system network bandwidth management, applications the VPort runs (such as VMD), how complicated the image is, and the performance of your PC or notebook when displaying images. The administrator should take into consideration all of these variables when designing the video over IP system, and when specifying the requirements for the video system.

**NOTE** Visit [http://www.moxa.com/event/Net/2012/IP\\_CCTV\\_Calculator/index.htm](http://www.moxa.com/event/Net/2012/IP_CCTV_Calculator/index.htm) to get help for network bandwidth estimation of different resolutions, FPS, video content, etc.

## Audio

### Audio Source

The VPort supports real-time and synchronous video/audio transmission. The default audio input is line-in. If a microphone is being used, your administrator will need to enable the microphone.

### Audio

Audio Setting

Enable microphone

# DynaStream™

DynaStream™ is a unique and innovative function that allows for adaptive frame rates in response to events on the network, such as event triggers and system commands. When network traffic becomes congested, DynaStream™ allows VPort products to respond to CGI, SNMP, and Modbus commands from SCADA (as well as the VPort 26A-1MP's VMD, DI, CGI events, and video loss triggers) and automatically decrease the frame rates to reduce bandwidth consumption. This reserves bandwidth for the SCADA system to maintain Quality of Service (QoS) and guarantees that the SCADA performance will not be impacted by video traffic. For example, the frame rate can be set low during regular streaming to reduce bandwidth usage and automatically switch to a high frame rate during triggered events to ensure quick transmission of critical video data or video streams, or to provide detailed visual images for problem analysis.

**NOTE** For enabling the DynaStream function from CGI commands and Modbus TCP, please refer to the CGI Commands User's Manual of VPort SDK PLUS and Modbus Address Table

## Basic

The administrator can adjust the number of frames per second for each channel. There are two types of frame rate status: Live and Alarm. Live status refers to the normal frames rates for live video displays. Alarm status refers to what the frame rate will be adjusted to when the DynaStream function is activated.

Currently, the video stream for DynaStream is only set up for H.264 video streams, and the resolution and quality are the same as for the settings in the Video Performance configuration.

### DynaStream Basic Setting

This innovative Dynastream function is to change the video streams' frame rate automatically once an event/ alarm is happened (VPort's alarms or external events). This change can be from low to high frame rate to increase the smooth of the video streams, or from high to low frame rate to lower down the bandwidth consumption. The Live is to setup the current frame rate, and the Alarm is to setup the frame rate after being changed by an alarm/ event.

Stream	CodecType	Status	Max FPS	Resolution	Quality	Preview
Stream 1	H.264	Live	25	800x600	Fixed quality	<input type="button" value="Test"/>
		Alarm	25			



Setting	Description	Factory Default
Max. FPS	For setting the maximum frame rate per second.	PAL: 25 NTSC: 30

After setting the Alarm frame rate, you may preview the video performance by clicking the Test button to ensure it meets your requirements.

## Conditions

The administrator can set up DynaStream’s trigger conditions for facilitating automatic frame rate adjustment, e.g., from Live to Alarm status.

Currently, there are four types of trigger conditions: CGI Event, Motion Detection, and Digital input.

### DynaStream Trigger Conditions

The Dynastream can be triggered by the alarms VPort has, including Digital Input, CGI Event, Video Motion Detection and Video Loss. This page can setup the trigger conditions and the duration this Dynastream works.

CGI Event			Motion Detection			Digital Input		
Event No.	Enable	Duration	VMD	Enable	Duration	Input No.	Enable	Duration
Event 1	<input type="checkbox"/>	5 sec(s)	1	<input type="checkbox"/>	5 sec(s)	DI1	<input type="checkbox"/>	5 sec(s)
Event 2	<input type="checkbox"/>	5 sec(s)	2	<input type="checkbox"/>	5 sec(s)			
Event 3	<input type="checkbox"/>	5 sec(s)	3	<input type="checkbox"/>	5 sec(s)			
Event 4	<input type="checkbox"/>	5 sec(s)						
Event 5	<input type="checkbox"/>	5 sec(s)						

Save

Setting	Description	Factory Default
Enable	To enable or disable the DynaStream function.	Disable
Duration	This refers to the time period that DynaStream is in operation. For example, if the duration is set to 5 seconds, then the frame rate will change from the Live to the Alarm status for the duration of 5 seconds. After 5 seconds, the frame rate will return to the Live status setting.	5 seconds
Trigger Channel	To enable or disable the video channels.	Disabled

## Alarm

### System

In addition to the LED indicators, network disconnected alarm is provided by the VPort 26A-1MP for notifying the system operators and administrator, also store video image in SD card so that you can retrieve recorded image after network connection is restored.

### System Alarm

**Network Disconnected Alarm**

Enable network disconnected alarm

Trigger Relay Alarm

Video Record

*Note: System alarms work continuously after being set up.*

Save

Setting	Description	Factory Default
Enable network disconnected alarm	To enable or disable the network disconnected alarm.	Disable
Trigger Relay alarm	Enable or disable the triggering of Relay	Disable
Video record	Once the network link is down, video streams can be recorded on the SD card, and once the network link is back up, the video recording will be stopped.	Disable

**NOTE** For the VPort P26A-1MP, the PoE model is powered via the Ethernet cable, so once the network cable is broken, it will be powered off, and there is no way to record video on the SD card.

## Basic

### Event Alarm Basic Settings

#### Alarm Time Interval

Delay  second(s) before detecting the next alarm (10~999 secs)

#### Send Alarm with Snapshot images

Take snapshot in  seconds(s) before event (1~10 secs)

Take snapshot in  seconds(s) after event

#### Suffix of Image File Name in FTP and Mail attachment

With Data and Time

With Customized words

#### DI, Relay Status

DI 1 : Low

Relay 1 : Close

#### Relay Active Behavior

Relay is in active continuously once an alarm is happened.

Relay is in active for the period of alarm interval time once an alarm is happened.

Relay is in active for the period of the alarm being triggered(DI trigger and lan port link-down).

#### Override Relay warning setting

Override Relay 1 warning setting

**Save**

#### Alarm Time Interval

Setting	Description	Default
Delay second(s) before detecting the next alarm	Set the minimum time interval before another event alarm is triggered.	32 seconds (10 to 999 seconds)

**NOTE** The delay before triggering the next alarm cannot be less than the time needed to take a snapshot after an event (post-event image).



**Send Alarm with Snapshot images**

Setting	Description	Default
Take snapshot seconds(s) before the event	A snapshot image is taken this number of seconds before the event alarm is triggered.	2 seconds (from 1 to 6 seconds)
Take snapshot seconds(s) after the event	A snapshot image is taken this number of seconds after the event alarm is triggered.	11 seconds (from 1 to 999 seconds)

**NOTE** VPort products will take 3 JPEG snapshot images: VPRE.JPG (pre-event), VTRG.JPG (the moment of event) and VPOS.JPG (post-event) for the video channel when the trigger condition is met. The three snapshots can also be downloaded by Email and FTP.

**Suffix of Image File Name in FTP and Mail attachment**

The snapshot images can be sent either by email or FTP. Administrators can add a suffix to the filename of each JPEG snapshot image to make it easier to identify the files when using FTP to download the snapshots.

Setting	Description	Default
With Date and Time	Enable or disable adding the date and time to the filename.	Disable
With Customized words	Enable or disable adding some additional custom text to the filename to identify the snapshot image.	Disable

**DI, Relay Status**

Administrators can check the current DI and Relay status of the VPort in the "**DI, Relay Status**" section on the "Event Alarm Basic Settings" page. Two options are available to return the relay's status back to the system defaults. To enable the function, check the **Override Relay 1 warning setting** box, and then click on **Save**. In addition, in the "**Relay Active behavior**" section, you can configure the duration of the relay action, with options of activating the relays continuously, for the specified **Alarm Interval Time**, or for the period of time when the alarm is triggered.

## Schedule

A schedule is provided to set event alarms for daily security applications.

### Event Alarm Schedule Settings

Event Type Digital Input ▼

Digital Input  
Video Motion Detection  
CGI Event  
Camera Tamper Event

Weekly Schedule

Event Alarms are active all the time

Event Alarms are active based on weekly schedule

SUN Begin 00:00 Duration 00:01 [hh:mm]

MON Begin 00:00 Duration 00:01 [hh:mm]

TUE Begin 00:00 Duration 00:01 [hh:mm]

WEN Begin 00:00 Duration 00:01 [hh:mm]

THU Begin 00:00 Duration 00:01 [hh:mm]

FRI Begin 00:00 Duration 00:01 [hh:mm]

SAT Begin 00:00 Duration 00:01 [hh:mm]

Save

**Event Type**

Setting	Description	Default
Digital Input, Video Motion Detection, CGI Event, and Camera Tamper Event	Set up the schedule of each kind of event type.	Digital Input

**Weekly Schedule**

Setting	Description	Default
Event Alarms are active all the time	Select the option "Event Alarms are active all the time"	Event Alarms are active based on a weekly schedule
Event Alarms are active based on a weekly schedule	Select to operate event alarms on a weekly schedule.	

**NOTE** The applications described in the following sections will only work properly if either **Event Alarms are active all the time** or **Event Alarms are active based on weekly schedule** is Selected.

Setting	Description	Default
<input type="checkbox"/> Sun <input type="checkbox"/> Mon <input type="checkbox"/> Tue <input type="checkbox"/> Wed <input type="checkbox"/> Thu <input type="checkbox"/> Fri <input type="checkbox"/> Sat	Select the weekday for scheduling event alarms.	None
Begin 00:00	Set the start time of the event alarm.	00:00
Duration 00:00	Set the duration for the event alarm to be active.	00:00

**NOTE** Administrators can use the following steps to set up an event schedule:

1. Select Event Type
2. Enable "Event Alarms are active based on weekly schedule"
3. Select the weekday
4. Set the start time
5. Set the duration this event will be active.
6. Save

**Event Alarm**

Four kinds of event alarm are provided by the VPort for building an intelligent video surveillance system.

Alarm Type	Triggered Condition	Triggered Action
<b>Video Motion Detection (VMD)</b>	VMD 1 VMD 2 VMD 3	1. Trigger Relay 2. Email 3. FTP 4. HTTP Event Server 5. Record on SD card
<b>Digital Input</b>	High, Low, Rising and Falling	1. Trigger Relay 2. Email 3. FTP 4. HTTP Event Server 5. Record on SD card
<b>CGI Event</b>	The CGI trigger message	1. Trigger Relay 2. Email 3. FTP 4. HTTP Event Server 5. Record on SD card

Alarm Type	Triggered Condition	Triggered Action
Camera Tamper	Camera tampering by painting, blocking, defocusing, or changing the position.	1. Trigger Relay 2. Email 3. FTP 4. HTTP Event Server 5. Record on SD card

## Digital Input

### Digital Inputs

Enable digital input alarm

Trigger Conditions and Actions

Trigger Condition	Trigger Action	HTTP Action Setting
<input type="radio"/> High <input checked="" type="radio"/> Low <input type="radio"/> Rising <input type="radio"/> Falling	<input type="checkbox"/> Trigger Relay1 alarm <input type="checkbox"/> Send snapshot image via E-mail <input type="checkbox"/> Send snapshot image via FTP <input type="checkbox"/> Send message via HTTP Event Servers <input type="checkbox"/> Record video on SD card 5 Sec.	<input type="checkbox"/> Server1 <input type="checkbox"/> Server2 <input type="checkbox"/> Server3 <input type="checkbox"/> Server4 <div style="border: 1px solid gray; height: 30px; width: 100%;"></div>

Note: HTTP Action Setting allows the VPort sending the customized alarm messages to the HTTP Event Server when the event is triggered. Please refer to URL syntax being defined in RFC 1738 and the customer-defined commands for writing this setting with 100 characters.

**Save**

Setting	Description	Default
Enable digital input alarm	Enable or disable the digital input alarm.	Disable

### Trigger Conditions

Setting	Description	Default
High	The DI is always in the "High" state after an alarm is detected.	Disable
Low	The DI is always in the "Low" state after an alarm is detected.	Enable
Rising	The DI works from state "Low" to state "High" and then back to state "Low" when an alarm is detected.	Disable
Falling	The DI works from state "High" to state "Low" and then back to state "High" when an alarm is detected.	Disable

**NOTE** Please refer to Chapter 1 to see the DI specifications.

### Trigger Actions

Setting	Description	Default
Trigger Relay1 alarm	Once this DI is triggered, the Relay1 alarm will be activated	Disable
Send snapshot image via E-mail	Once this DI is triggered, the VPort will send the snapshot images set in the <b>Event Alarm/Basic</b> page to the E-mail addresses, which are set in the <b>Network/ SMTP Server</b> page.	Disable
Send snapshot image via FTP	Once this DI is triggered, the VPort will send the snapshot images set in the <b>Event Alarm/Basic</b> page to the FTP server, which are set in the <b>Network/ FTP Server</b> page.	Disable
Send message via HTTP Event Servers	Once this DI is triggered, the VPort will send the message set in <b>HTTP Action Setting</b> to the HTTP event servers, which are set in the <b>Network/ HTTP Event Server</b> page.	Disable
Record video on SD card for Sec	Once this DI is triggered, then for a configured time period VPort will record video to an (optional) SD card.	Disabled

**HTTP Action Setting**

Setting	Description	Default
Server 1, 2, 3, 4	Select the HTTP event server for sending the HTTP action	Disable
Blank column	Administrators can customize the message sent to the HTTP event sever in this column	Blank


**Motion Detection**

Video Motion Detection (VMD) is an intelligent event alarm for video surveillance network systems. With the 3 area-selectable VMDs and sensitivity/percentage tuning, administrators can easily set up the VMD alarm to be active 24 hours a day, 7 days a week.

**VMD (Video Motion Detection)**

- Enable VMD alarm
- Show alert on the image when VMD is triggered
- Show motion block on the image (Assistance function, disable it when setting is done)
- Show motion percent info on the image (Assistance function, disable it when setting is done)

Set up VMD Alarm



EnableWindow      Percent

VMD [      ] [ 80 ]

VMD [      ] [ 80 ]

VMD [      ] [ 80 ]

Sensitive

1

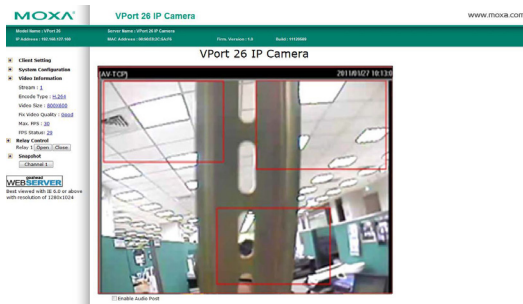
Trigger Conditions and Actions

Trigger Condition	Trigger Action	HTTP Action Setting
VMD1	<input type="checkbox"/> Trigger Relay1 alarm <input type="checkbox"/> Send snapshot image via E-mail <input type="checkbox"/> Send snapshot image via FTP <input type="checkbox"/> Send message via HTTP Event Servers <input type="checkbox"/> Record video on SD card 5 Sec	<input type="checkbox"/> Server1 <input type="checkbox"/> Server2 <input type="checkbox"/> Server3 <input type="checkbox"/> Server4
VMD2	<input type="checkbox"/> Trigger Relay1 alarm <input type="checkbox"/> Send snapshot image via E-mail <input type="checkbox"/> Send snapshot image via FTP <input type="checkbox"/> Send message via HTTP Event Servers <input type="checkbox"/> Record video on SD card 5 Sec	<input type="checkbox"/> Server1 <input type="checkbox"/> Server2 <input type="checkbox"/> Server3 <input type="checkbox"/> Server4
VMD3	<input type="checkbox"/> Trigger Relay1 alarm <input type="checkbox"/> Send snapshot image via E-mail <input type="checkbox"/> Send snapshot image via FTP <input type="checkbox"/> Send message via HTTP Event Servers <input type="checkbox"/> Record video on SD card 5 Sec	<input type="checkbox"/> Server1 <input type="checkbox"/> Server2 <input type="checkbox"/> Server3 <input type="checkbox"/> Server4

Note: HTTP Action Setting allows the VPort sending the customized alarm messages to the HTTP Event Server when the event is triggered. Please refer to URL syntax being defined in RFC 1738 and the customer-defined commands for writing this setting with 100 characters.

Setting	Description	Default
Enable VMD alarm	Enable or disable the Video Motion Detection alarm	Disabled
Show alert on the image when VMD is triggered	Enable or disable the "show the alert," which when enabled displays a red square frame on the video image of the VMD alarm notification	Disabled
Show motion block on the image (Assistance function, disable it when setting is done)	Enable this item for real-time motion detection, which is related to VMD sensitivity configuration.	Disabled
Show motion percent info on the image (Assistance function, disable it when setting is done)	Enable this item to show the change in percentage of motion detection, which is related to the VMD's percentage configuration.	Disabled

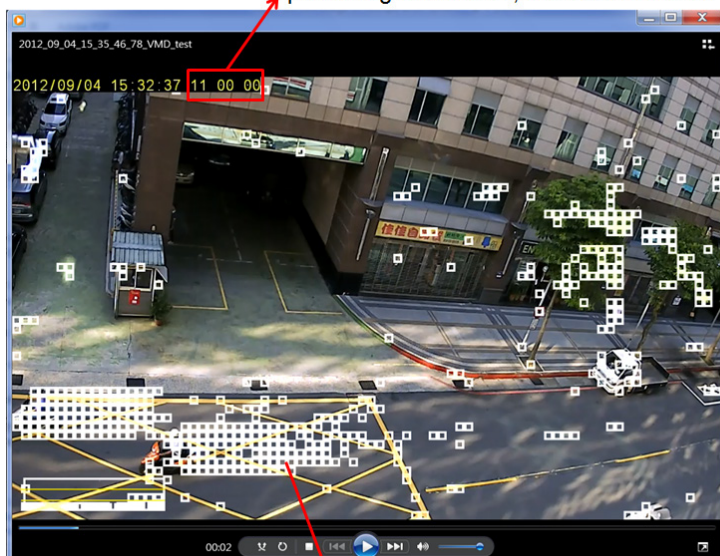
**NOTE** Once the **Show alert on the image** when VMD is triggered is enabled, the red frames that appear on the homepage image indicate the size of the VMD window set up by the administrator.



**NOTE** To enable **Show motion block on the image** and **Show motion percent info on the image**, the image appearance in the video configuration must be configured to show on the image.

**Note** **Show motion block on the image** and **Show motion percent info on the image** are to help the administrator configure the VMD (video motion detection) function. Once both items are enabled, the administrator can see the motion detection real-time status and the change in percentage of the VMD area on the video image. If the motion status and change of percentage are just what the administrator expects, then the configurations of sensitivity and percentage of VMD are confirmed. Before clicking on **Save**, disable both items after the configurations are confirmed.

3 numbers to show the current VMD change percentage for VMD1, VMD2 and VMD3



Blocks to show the motion objects

**Setup a VMD Alarm**

Setting	Description	Default
Enable	Enable or disable the VMD1, 2, and 3	Disabled
Window	The name of each VMD window	Blank
Percent	The minimum percentage of an image change for triggering VMD. Decrease the percentage to make it easier to trigger VMD.	80
Sensitive	The measurable difference between two sequential images for triggering VMD. Increase the sensitivity to make it easier for VMD to be triggered.	1

**NOTE** After setting the VMD Alarm, click the **Save** button to save the changes

**Trigger Conditions and Actions**

For each VMD administrators can set triggers, such as "send snapshot image via E-mail", "send snapshot image via FTP", "send Message via HTTP event servers", "save snapshot on storage" and "record video on SD card".

Setting	Description	Default
Trigger Relay1 alarm	Once the VMD is triggered, the Relay alarm will be activated	Disabled
Send snapshot image via E-mail	Once this VMD is triggered, the VPort will send the snapshot images set in the <b>Event Alarm/Basic</b> page to the E-mail addresses, which are set in the <b>Network/ SMTP Server</b> page.	Disabled
Send snapshot image via FTP	Once this VMD is triggered, the VPort will send the snapshot images set in the <b>Event Alarm/Basic</b> page to the FTP server, which are set in the <b>Network/ FTP Server</b> page.	Disabled
Send message via HTTP Event Servers	Once this VMD is triggered, the VPort will send the message set in <b>HTTP Action Setting</b> to the HTTP event servers, which are set in the <b>Network/ HTTP Event Server</b> page.	Disabled
Record video on SD card for <input type="checkbox"/> Sec	Once this VMD is triggered, then for a configured time period VPort will record video to an (optional) SD card.	Disabled

**HTTP Action Setting**

Setting	Description	Default
Server 1, 2, 3, or 4	Select the HTTP event server for sending the HTTP action	Disabled
Blank text box	For customizing the message to the HTTP event server.	Blank

**How to Configure a VMD alarm****Step 1:**

Check the **Enable VMD alarm** box. If the Administrator wants to show the red frame alert on the image on the VPort 26A-1MP's web homepage, check the **Show alert on the image when VMD is triggered** box.

**Step 2:**

Assign a name to the VMD window in the **Window Name** column.

**Step 3:**

Set up the **Percent%** parameters for individual VMD windows and the **Sensitivity** for all VMD windows. Click on the **Save** button to save these two configurations.

**Step 4:**

Select **Show motion block on the image** and **Show motion percent info on the image**, and check the real-time motion detection status and motion detection change of percentage on the homepage's image to see if the configurations of VMD are OK or not. If not, go back to the configuration page to change the percentage and sensitivity, and then check again. Once the VMD configurations are confirmed, disable **Show motion block on the image** and **Show motion percent info on the image**.

**Step 5:**

Click **Save** to save the settings.

**Step 6:**

To test the VMD condition, check the action of the graphics bar on the left side of the save button. Wave your hand in front of the camera, in the VMD area, and then note which color shows up in the graphics bar. Green means VMD is not triggered. Red means VMD is triggered.

**Step 7:**

Set up the Trigger Conditions and Actions of each VMD, and then click on the **Save** button to save these configurations.

**NOTE** Video Motion Detection is provided as a reference because it is environment-dependent. When the settings are configured to be very sensitive to motion, some triggered events might actually be false alarms that were triggered by only a small difference between sequential images. These false alarms might be triggered by the flicker of fluorescent lights, the movement of shadows, or similar everyday events.

**CGI Event**

The VPort can accept 5 CGI commands, which are sent from external devices, such as ioLogik series Ethernet I/O, to be the event alarms.

**NOTE** The VPort only can accept the CGI commands that follow the VPort’s CGI commands format.

Enable CGI Event alarm

CGI Event Trigger Actions

Event Index	Trigger Action	HTTP Action Setting
<b>Event 1</b>	<input type="checkbox"/> Trigger Relay1 alarm <input type="checkbox"/> Send snapshot image via E-mail <input type="checkbox"/> Send snapshot image via FTP <input type="checkbox"/> Send message via HTTP Event Servers <input type="checkbox"/> Record video on SD card 5 <input type="text"/> Sec.	<input type="checkbox"/> Server1 <input type="checkbox"/> Server2 <input type="checkbox"/> Server3 <input type="checkbox"/> Server4 <input type="text"/>
<b>Event 2</b>	<input type="checkbox"/> Trigger Relay1 alarm <input type="checkbox"/> Send snapshot image via E-mail <input type="checkbox"/> Send snapshot image via FTP <input type="checkbox"/> Send message via HTTP Event Servers <input type="checkbox"/> Record video on SD card 5 <input type="text"/> Sec.	<input type="checkbox"/> Server1 <input type="checkbox"/> Server2 <input type="checkbox"/> Server3 <input type="checkbox"/> Server4 <input type="text"/>
<b>Event 3</b>	<input type="checkbox"/> Trigger Relay1 alarm <input type="checkbox"/> Send snapshot image via E-mail <input type="checkbox"/> Send snapshot image via FTP <input type="checkbox"/> Send message via HTTP Event Servers <input type="checkbox"/> Record video on SD card 5 <input type="text"/> Sec.	<input type="checkbox"/> Server1 <input type="checkbox"/> Server2 <input type="checkbox"/> Server3 <input type="checkbox"/> Server4 <input type="text"/>
<b>Event 4</b>	<input type="checkbox"/> Trigger Relay1 alarm <input type="checkbox"/> Send snapshot image via E-mail <input type="checkbox"/> Send snapshot image via FTP <input type="checkbox"/> Send message via HTTP Event Servers <input type="checkbox"/> Record video on SD card 5 <input type="text"/> Sec.	<input type="checkbox"/> Server1 <input type="checkbox"/> Server2 <input type="checkbox"/> Server3 <input type="checkbox"/> Server4 <input type="text"/>
<b>Event 5</b>	<input type="checkbox"/> Trigger Relay1 alarm <input type="checkbox"/> Send snapshot image via E-mail <input type="checkbox"/> Send snapshot image via FTP <input type="checkbox"/> Send message via HTTP Event Servers <input type="checkbox"/> Record video on SD card 5 <input type="text"/> Sec.	<input type="checkbox"/> Server1 <input type="checkbox"/> Server2 <input type="checkbox"/> Server3 <input type="checkbox"/> Server4 <input type="text"/>

Note: HTTP Action Setting allows the VPort sending the customized alarm messages to the HTTP Event Server when the event is triggered. Please refer to URL syntax being defined in RFC 1738 and the



**CGI Event Trigger Actions**

Setting	Description	Default
Enable CGI Event alarm	Enable or disable CGI Event alarm.	Disable
Event	Select the Event 1, 2, 3, 4, 5	Disable
Trigger Relay1 alarm	Once this CGI Event is triggered, the Relay alarm will be activated	Disabled
Send snapshot image via FTP	Once this CGI Event is triggered, the VPort will send the snapshot images set in the <b>Event Alarm/Basic</b> page to the FTP server, which are set in the <b>Network/FTP Server</b> page.	Disable
Send message via HTTP Event Servers	Once this CGI Event is triggered, the VPort will send the message set in the <b>HTTP Action Setting</b> to the HTTP event servers, which are set in the <b>Network/HTTP Event Server</b> page.	Disable
Save snapshot to storage	The pre-alarm, trigger, and post-alarm snapshot images can be saved on an (optional) SD card.	Disabled
Record video on SD card for <input type="checkbox"/> Sec	Once this VMD is triggered, then for a configured time period the VPort will record video to an (optional) SD card.	Disabled

**HTTP Action Setting**

Setting	Description	Default
Server 1, 2, 3, 4	Select the HTTP event server for sending the HTTP action	Disable
Blank column	Administrators can customize the message sent to the HTTP event sever in this column	Blank

## Camera Tamper

The VPort 26A-1MP support camera tamper function to detect any malicious behavior that is done to the camera, such as spray painting, view blocking, angle adjustment, etc. This page allows you to configure the parameters and alarm condition/action of camera tamper alarm.

### Camera Tamper

Enable camera tamper alarm

Alarm osd

Trigger Conditions and Actions

Trigger Condition	Trigger Action	HTTP Action Setting
<b>Camera Tamper</b> Cover Area <input type="text" value="30"/> Duration <input type="text" value="5"/> Sec.	<input type="checkbox"/> Trigger Relay1 alarm <input type="checkbox"/> Send snapshot image via E-mail <input type="checkbox"/> Send snapshot image via FTP <input type="checkbox"/> Send message via HTTP Event Servers <input type="checkbox"/> Record video on SD card <input type="text" value="5"/> Sec.	<input type="checkbox"/> Server1 <input type="checkbox"/> Server2 <input type="checkbox"/> Server3 <input type="checkbox"/> Server4 <div style="border: 1px solid gray; height: 40px; width: 100%;"></div>

Note: HTTP Action Setting allows the VPort sending the customized alarm messages to the HTTP Event Server when the event is triggered. Please refer to URL syntax being defined in RFC 1738 and the customer-defined commands for writing this setting with 100 characters.

Setting	Description	Default
Enable camera tamper alarm	Enable or disable the digital input alarm	Disabled
Alarm osd	Determine whether or not camera will display on screen warning square when camera tamper alarm is triggered	Not Display

**Trigger Conditions**

Setting	Description	Default
Cover Area	How much percentage of the camera view should be affected before camera tamper alarm is triggered.	30%
Duration	How long should the camera tamper behavior persist before alarm is triggered	5 sec



**Trigger Actions**

Setting	Description	Default
Enable CGI Event alarm	Enable or disable CGI Event alarm.	Disable
Event	Select the Event 1, 2, 3, 4, 5	Disable
Trigger Relay1 alarm	Once this CGI Event is triggered, the Relay alarm will be activated	Disabled
Send snapshot image via FTP	Once this CGI Event is triggered, the VPort will send the snapshot images set in the Event Alarm/Basic page to the FTP server, which are set in the Network/FTP Server page.	Disable
Send message via HTTP Event Servers	Once this CGI Event is triggered, the VPort will send the message set in the HTTP Action Setting to the HTTP event servers, which are set in the Network/HTTP Event Server page.	Disable
Save snapshot to storage	The pre-alarm, trigger, and post-alarm snapshot images can be saved on an (optional) SD card.	Disabled
Record video on SD card for <input type="checkbox"/> Sec	Once this VMD is triggered, then for a configured time period the VPort will record video to an (optional) SD card.	Disabled

**HTTP Action Setting**

Setting	Description	Default
Server 1, 2, 3, 4	Select the HTTP event server for sending the HTTP action	Disable
Blank column	Administrators can customize the message sent to the HTTP event sever in this column	Blank

Once the configurations are done, a purple box will appear in the right-top corner of the image to indicate that environmental learning is underway; the procedure should take between 1 and 3 minutes. After the learning is complete, the purple box will disappear. Once the tamper alarm is triggered, the box will reappear, but the color will now be yellow.

**Camera tamper in environment learning**



*Camera tamper is triggered*



## Frequently Asked Questions

---

**Q: What if I forget my password?**

A: Every access to the IP camera needs authentication, unless the admin password is set up as blank. If you are one of the managed users, you will need to ask the administrator for the password. If you are the administrator, there is no way to recover the admin password. The only way to regain access to IP camera is to utilize the **RESET** button to restore the factory settings (see Chapter 1 for details).

**Q: Why can't I see video from the IP camera after it has been authenticated?**

A: There are many possible scenarios:

- (a) If the IP camera is installed correctly and you are accessing the IP camera for the first time using Internet Explorer, adjust the security level of Internet Explorer to allow installation of plug-ins.
- (b) If the problem still exists, the number of users accessing the IP camera at the same time may exceed the maximum that the system allows.
- (c) If the video is still not displayed, please try to run the Factory default to see if it is in work properly.

**Q: What is the plug-in for?**

A: The plug-in provided by IP camera is used to display motion pictures. The plug-in is needed because Internet Explorer does not support streaming technology. If your system does not allow installation of plug-in software, the security level of the web browser may need to be lowered. It is recommended that you consult the network supervisor in your office before adjusting the security level.

**Q: Why is the timestamp different from the system time of my PC or notebook?**

A: The timestamp is based on the system time of the IP camera. It is maintained by an internal real-time clock, and automatically synchronizes with the time server if the video encoder is connected to the Internet and the function is enabled. Differences of several hours may result from the time zone setting.

**Q: How many users are allowed to access the IP camera at the same time?**

A: Basically, there is no limitation. However the video quality also depends on the network. To achieve the best effect, the VPort 26A-1MP IP camera will allow 5 video streams for udp/tcp/http connections. We recommend using multicast streaming if you need to host a large number of users.

**Q: What is the IP camera's video rate?**

A: The codec can process 30 frames per second internally. However the total performance is subject to many variables, as listed below:

1. Network throughput.
2. Bandwidth share.
3. Number of users.
4. More complicated objects result in larger image files.
5. The speed of the PC or notebook that is responsible for displaying images.

**Q: How can I keep the IP camera as private as possible?**

A: The IP camera is designed for surveillance purposes and has many flexible interfaces. The user authentication and special confirmation when installing can keep the video encoder from unauthorized access. You may also change the HTTP port to a non-public number. Check the system log to examine any abnormal activities and trace the origins.

# B

## Modbus Address Table

---

### Read/Write Registers (Support Function Code 4 & Function Code 3)

Address	Word (2 bytes)	Item name	R/W	Description
0x0000	1	Vender ID	R	0x1393
0x0001	1	Unit ID	R	0x01
0x0002	1	Product Code	R	0x880E
0x0010	20	Vender Name	R	moxa
0x0030	20	Product Name	R	VPort 36-1MP
0x0050	1	Serial Number	R R	R R
0x0051	2	Firmware Version		
0x0053	2	Release Date		
0x0055	2	MAC Address		
0x0080	1	DI Status	R	1: High 0: Low
0x0084	1	Relay Status	R/W	0: Open 1: Close
0x0701	1	Record Status	R/W	R: 0: No record 1: recording W: 0: stop record 1: start record
0x0801	1	Dynastream Status	R/W	R 0: No run dynastream 1: run dynastream W 0: stop dynastream 1: start dynastream

# C

## Time Zone Table

The hour offsets for different time zones are shown below. You will need this information when setting the time zone in automatic date/time synchronization. GMT stands for Greenwich Mean Time, which is the global time that all time zones are measured from.

(GMT-12:00)	International Date Line West
(GMT-11:00)	Midway Island, Samoa
(GMT-10:00)	Hawaii
(GMT-09:00)	Alaska
(GMT-08:00)	Pacific Time (US & Canada), Tijuana
(GMT-07:00)	Arizona
(GMT-07:00)	Chihuahua, La Paz, Mazatlan
(GMT-07:00)	Mountain Time (US & Canada)
(GMT-06:00)	Central America
(GMT-06:00)	Central Time (US & Canada)
(GMT-06:00)	Guadalajara, Mexico City, Monterrey
(GMT-06:00)	Saskatchewan
(GMT-05:00)	Bogota, Lima, Quito
(GMT-05:00)	Eastern Time (US & Canada)
(GMT-05:00)	Indiana (East)
(GMT-04:00)	Atlantic Time (Canada)
(GMT-04:00)	Caracas, La Paz
(GMT-04:00)	Santiago
(GMT-03:30)	Newfoundland
(GMT-03:00)	Brasilia
(GMT-03:00)	Buenos Aires, Georgetown
(GMT-03:00)	Greenland
(GMT-02:00)	Mid-Atlantic
(GMT-01:00)	Azores
(GMT-01:00)	Cape Verde Is.
(GMT)	Casablanca, Monrovia
(GMT)	Greenwich Mean Time: Dublin, Edinburgh, Lisbon, London
(GMT+01:00)	Amsterdam, Berlin, Bern, Stockholm, Vienna
(GMT+01:00)	Belgrade, Bratislava, Budapest, Ljubljana, Prague (GMT+01 :00) Brussels, Copenhagen, Madrid, Paris
(GMT+01:00)	Sarajevo, Skopje, Warsaw, Zagreb
(GMT+01:00)	West Central Africa
(GMT+02:00)	Athens, Istanbul, Minsk
(GMT+02:00)	Bucharest
(GMT+02:00)	Cairo
(GMT+02:00)	Harare, Pretoria
(GMT+02:00)	Helsinki, Kyiv, Riga, Sofia, Tallinn, Vilnius
(GMT+02:00)	Jerusalem
(GMT+03:00)	Baghdad

(GMT+03:00)	Kuwait, Riyadh
(GMT+03:00)	Moscow, St. Petersburg, Volgograd
(GMT+03:00)	Nairobi
(GMT+03:30)	Tehran
(GMT+04:00)	Abu Dhabi, Muscat (GMT+04:00) Baku, Tbilisi, Yerevan (GMT+04:30) Kabul
(GMT+05:00)	Ekaterinburg
(GMT+05:00)	Islamabad, Karachi, Tashkent (GMT+05:30) Chennai, Kolkata, Mumbai, New Delhi
(GMT+05:45)	Kathmandu
(GMT+06:00)	Almaty, Novosibirsk (GMT+06:00) Astana, Dhaka
(GMT+06:00)	Sri Jayawardenepura (GMT+06:30) Rangoon
(GMT+07:00)	Bangkok, Hanoi, Jakarta (GMT+07:00) Krasnoyarsk
(GMT+08:00)	Beijing, Chongqing, Hongkong, Urumqi
(GMT+08:00)	Taipei
(GMT+08:00)	Irkutsk, Ulaan Bataar (GMT+08:00) Kuala Lumpur, Singapore (GMT+08:00) Perth
(GMT+09:00)	Osaka, Sapporo, Tokyo (GMT+09:00) Seoul
(GMT+09:00)	Yakutsk
(GMT+09:30)	Adelaide
(GMT+09:30)	Darwin
(GMT+10:00)	Brisbane
(GMT+10:00)	Canberra, Melbourne, Sydney
(GMT+10:00)	Guam, Port Moresby (GMT+10:00) Hobart
(GMT+10:00)	Vladivostok
(GMT+11:00)	Magadan, Solomon Is., New Caledonia
(GMT+12:00)	Auckland, Wellington (GMT+ 12:00) Fiji, Kamchatka, Marshall Is.
(GMT+13:00)	Nuku'alofa

# Technical Specifications

---

## Camera

**Sensor:** 1/2.7" HD progressive scan CMOS

**Lens:** Focal length = 3 to 9 mm, F = 1.2

**Auto Iris Type:** DC drive

**Camera Angle (controlled manually):**

- Pan:  $\pm 175^\circ$ , Tilt: 0 to  $85^\circ$
- Rotation: PAN:  $\pm 180^\circ$

**Illumination:**

- Color: 0.2 lux at F1.2
- B/W: 0.05 lux at F1.2

**Synchronization:** Internal

**White Balance:** ATW/AWB (range: 3200 to 10000°K)

**Dynamic Range:**

- Color: 100 db
- B/W: 110 db

**Electronic Shutter:** Auto, 1/30 to 1/25,000 sec.

**S/N Ratio:** 50 dB (Gamma, Aperture, AGC OFF, DNR ON)

**ICR Control:** Auto

**DNR:** Built-in DNR (digital noise reduction)

**WDR:** Level 1-8/ off

**AGC Control:** 2X, 4X, 8X, 16X, 32X, 64X

**Flickerless Control:** Indoor/Outdoor modes

**Black Level Control:** High, Medium, Low

**Auto Exposure:** Level  $\pm 5$

**Image Rotation:** Flip, Mirror, and  $180^\circ$  rotation

**Image Setting:** Manual tuning with saturation, sharpness, and contrast

## Video

**Video Compression:** H.264 (ISO/IEC 14496-10) or MJPEG

**Video Output:** Via Ethernet

**Video Streams:** Maximum of 3 video streams (2 x H.264, 1 x MJPEG)

**Video Resolution and FPS (frames per second):**

	NTSC		PAL	
	Size	Max. FPS	Size	Max. FPS
QCIF	176 x 112	30	176 x 144	25
CIF	352 x 240	30	352 x 288	25
VGA	640 x 480	30	640 x 480	25
4CIF	704 x 480	30	704 x 576	25
Full D1	720 x 480	30	720 x 576	25
SVGA	800 x 600	30	800 x 600	25
HD	1280 x 720	30	1280 x 720	25
WXGA	1280 x 800	30	1280 x 800	25

Note: Each independent stream supports up to 30 FPS.



**Video Viewing:**

- DynaStream™ supported for changing the video frame rate automatically
- CBR Pro™ for good image quality in limited bandwidth transmission
- 3 privacy mask areas provided
- Adjustable image size and quality
- Timestamp and text overlay
- Maximum of 5 simultaneous unicast connections
- ROI (Region of Interest) configuration for up to 3 areas

**Audio**

**Audio Inputs:** 1 line-in or mic-in with 2-pin terminal block connector

**Audio Outputs:** 1 line-out with 2-pin terminal block connector

**Network**

**Protocols:** TCP, UDP, HTTP, SMTP, FTP, Telnet, NTP, DNS, DHCP, UPnP, RTP, RTSP, ICMP, IGMPv3, QoS, SNMPv1/v2c/v3, DDNS, Modbus/TCP, 802.1X, SSH/HTTPS

**Ethernet:** 1 10/100BaseT(X) Ethernet port, RJ45 connector

**GPIO**

**Digital Inputs:** 1, max. 8 mA

- Low: +13 V to +30 V
- High: -30 V to +3 V

**Relay Outputs:** 1, max. 24 VDC @ 1 A

**LED Indicators**

**STAT:** Indicates if the system is booted properly or not

**Network:** 10 Mbps or 100 Mbps

**Power:** Power on/off

**DIP Switch:** To turn the LED light on/off

**Local Storage**

**SD Socket:** Standard SD socket (SDHC)

**Power Requirements**

**Power Input:**

- VPort 26A-1MP: 1, 12/24 VDC or 24 VAC
- VPort P26A-1MP: Power-over-Ethernet (PoE, IEEE 802.3af)

**Power Consumption:**

- VPort 26A-1MP: 4.7 W
- VPort P26A-1MP: 5.8 W

**Physical Characteristics**

**Housing:** Metal, IP66 rated for rain and dust protection, vandal-proof

**Dimensions:** 149 mm (diameter) x 120 mm (height)

**Installation:** Surface mounting, or outdoor mounting with accessories

**Alarms**

**Intelligent Video:** Tamper alarm

**Video Motion Detection:** Includes sensitivity settings

**Video Loss:** Video loss alarm

**Scheduling:** Daily repeat timing schedule

**Imaging:** JPEG snapshots for pre/trigger/post alarm images

**Custom Alarms:** HTTP event servers and CGI events for setting customized alarm actions

**Email/FTP Messaging:** Automatic transfer of stored images via email or FTP as event-triggered actions

**Pre-alarm Buffer:** 24 MB video buffer for JPEG snapshot images

**Security**

**Password:** User level password protection

**Filtering:** By IP address

**Authentication:** 802.1X

**Encryption:** HTTPS, SSH

### Environmental Limits

**Operating Temperature:**

Standard models: -40 to 50°C (-40 to 122°F )

Wide temp. models: -40 to 75°C (-40 to 167°F )

**Storage Temperature:** -40 to 85°C (-40 to 185°F)**Ambient Relative Humidity:** 5 to 95% (non-condensing)**Altitude:** Up to 2000 m

Note: Please contact Moxa if you require products guaranteed to function properly at higher altitudes.

### Standards and Certifications

**Safety:** UL 60950-1 (Pending)**EMI:** FCC Part 15, CISPR (EN 55022) class A**EMS:**

EN 61000-4-2 (ESD), Level 3,

EN 61000-4-3 (RS), Level 3,

EN 61000-4-4 (EFT), Level 3,

EN 61000-4-5 (Surge), Level 3,

EN 61000-4-6 (CS), Level 3,

EN 61000-4-8,

EN 61000-4-11

**Shock:** IEC 60068-2-27**Freefall:** IEC 60068-2-32**Vibration:** IEC 60068-2-6**Vandal Resistance:** EN 62262, IK10 level

### MTBF (mean time between failures)

**Time:** 201,721 hrs**Database:** Telcordia (Bellcore), 25°C

### Warranty

**Warranty Period:** 5 years**Details:** See [www.moxa.com/warranty](http://www.moxa.com/warranty)

### Minimum Viewing System Requirements

**CPU:** Pentium 4, 2.4 GHz**Memory:** 512 MB of memory**OS:** Windows XP with SP4 or above**Browser:** Internet Explorer 8.x or above**Multimedia:** DirectX 9.0c or above

Note: These preliminary specifications are subject to change without notice. Please check our website or sales representative for the most up-to-date specifications.

### Software Bundled Free

**VPort SDK PLUS:** Includes CGI commands, ActiveX Control, and API library for customized applications or system integration for third third-party developers (the latest version of SDK is available for download from Moxa's website).**Standard:** OnVIF