

V2406A

Instructions Guide

Installing a SATA Solid-State Drive/Hard Disk Drive (SSD/HDD) in a Moxa V2406A



Edition 1.0, April 2017

Technical Support Contact Information **www.moxa.com/support**

Moxa Americas:

Toll-free: 1-888-669-2872

Tel: 1-714-528-6777

Fax: 1-714-528-6778

Moxa Europe:

Tel: +49-89-3 70 03 99-0

Fax: +49-89-3 70 03 99-99

Moxa India:

Tel: +91-80-4172-9088

Fax: +91-80-4132-1045

Moxa China (Shanghai office):

Toll-free: 800-820-5036

Tel: +86-21-5258-9955

Fax: +86-21-5258-5505

Moxa Asia-Pacific:

Tel: +886-2-8919-1230

Fax: +886-2-8919-1231

MOXA®

© 2017 Moxa Inc. All rights reserved.

Table of Contents

1. Overview	- 3 -
2. Preparing to Install an SSD/HDD	- 3 -
2.1 Working Environment.....	- 3 -
2.2 Required Tools	- 3 -
2.3 Required Parts	- 4 -
3. Installation Flowchart	- 5 -
4. Installing a SATA Hard Disk.....	- 5 -
4.1 Opening the V2406A to Access the HDD/SSD Area.....	- 5 -
4.2 Installing or Replacing an SSD/HDD	- 9 -
4.2.1 Installing an SSD/HDD in the HDD Tray	- 9 -
4.2.2 Removing an Existing SSD/HDD.....	- 11 -
4.3 Installing the HDD/SSD Assembly	- 14 -
4.4 Reassembling the V2406A Housing.....	- 18 -
5. Testing the Newly Installed HDD/SSD.....	- 20 -

1. Overview

- This guide will help you install a new 2.5" SATA SSD/HDD storage device or replace an existing SSD/HDD in your Moxa V2406A.
- If you want to install a new 2.5" SATA SSD/HDD storage device in your V2406A, refer to section 4.2.1.
- To replace an existing 2.5" SATA SSD/HDD storage device in your V2406A, refer to section 4.2.2.
- Estimated installation time is 30 to 45 minutes.

2. Preparing to Install an SSD/HDD

2.1 Working Environment

We recommend setting up a working environment with anti electro-static discharge (ESD) equipment as show in **Table 1** for installing the SATA hard disk:


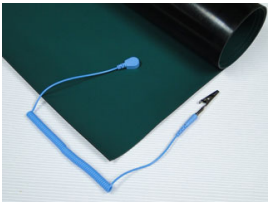
1. Antistatic wrist strap	2. Static dissipative rubber mat
 A blue antistatic wrist strap with a blue coiled cable and a blue plastic wristband. The strap is connected to a blue SATA-to-USB adapter cable.	 A green static dissipative rubber mat with a blue antistatic wrist strap lying on it. The mat is partially unrolled, showing its white underside.

Table 1

2.2 Required Tools

We recommend using appropriate tools and equipment for the procedures described throughout this guide. Some frequently used tools are listed below:



1. Phillips screwdriver	2. Hexagon nut driver
 A Phillips screwdriver with a black handle and a red grip. A blue circle with a white plus sign is overlaid on the handle.	 A hexagon nut driver with a black handle and a red grip. A blue circle with a white hexagon is overlaid on the handle.

Table 2

2.3 Required Parts

2.3.1 You will require the following parts to install a new SSD/HDD:

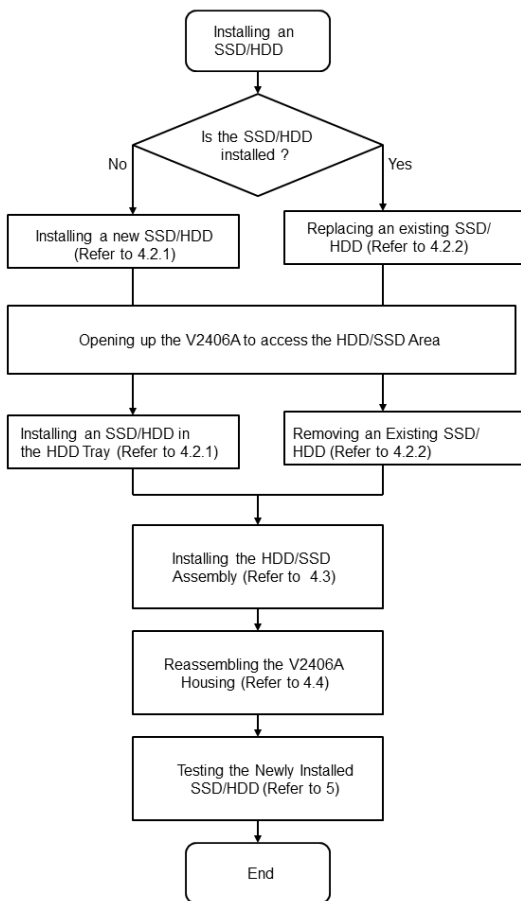
- Hard disk installation package
(Moxa Ordering No.: FK-75125-02)
- SATA SSD/HDD
(Refer to the [V2400A Component Compatibility Guide](#) for compatible models.)

2.3.2 To replace an existing SSD/HDD, you will require the following:

- SATA SSD/HDD
(Refer to the [V2400A Component Compatibility Guide](#) for compatible models.)

NOTE For additional details visit Moxa's [website](#) or contact your Moxa [Distributor](#) and Moxa [sales office](#).

3. Installation Flowchart



4. Installing a SATA Hard Disk

Installing a SATA hard disk involves first removing the bottom cover of the V2406A to access the HDD/SSD installation area on the main board, installing a HDD/SSD assembly, and reassembling the V2406A by putting back the cover and securing it with screws.

4.1 Opening the V2406A to Access the HDD/SSD Area

The HDD/SSD area is located inside the V2406A, which can be reached by opening up the cover as per the following instructions:

4.1.1 Place the V2406A upside down on the working area as shown in Figure 1.

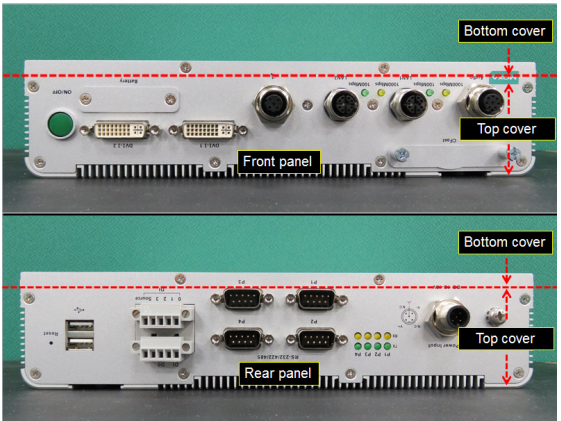


Figure 1

4.1.2 Remove the two terminal blocks on the rear panel as shown in Figure 2.

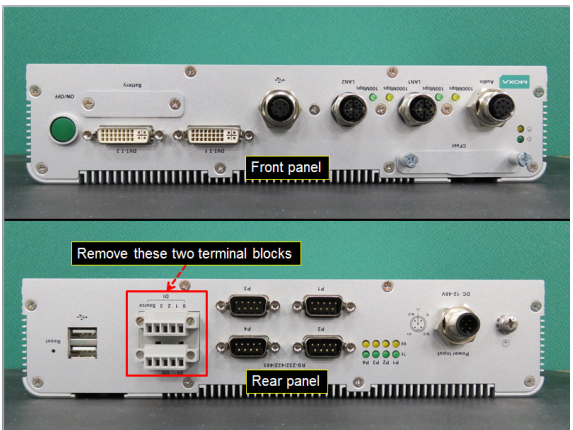


Figure 2

- 4.1.3 Use a hexagon nut driver (item 2 in Table 2) to remove the eight (8) hexagonal bolts (indicated with red circles) on the rear panel as shown in Figure 3.



Figure 3

- 4.1.4 Use a Phillips screwdriver (item 1 in Table 2) to remove the ten (10) screws (indicated with red circles) on the front and rear panels as shown in Figure 4. After removing the screws, place the V2406A such that its rear panel is facing towards you.

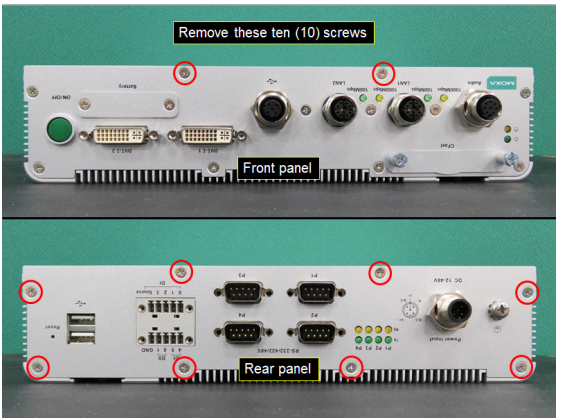


Figure 4

4.1.5 Open the rear panel partially as shown in Figure 5. Do not pull out any wires or cables connected to the rear panel (see Figure 6).



Figure 5

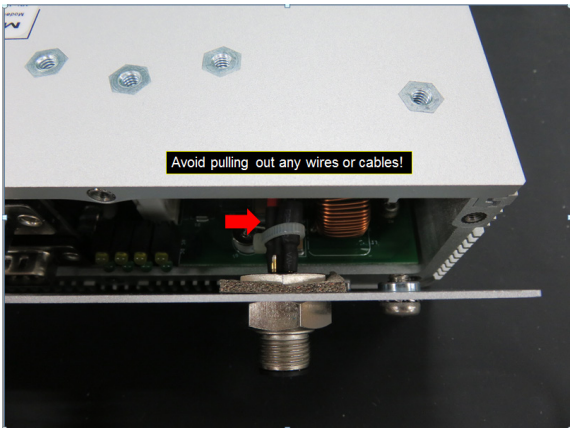


Figure 6

4.1.6 Slide out the bottom cover of the V2406A completely as shown in Figure 7.

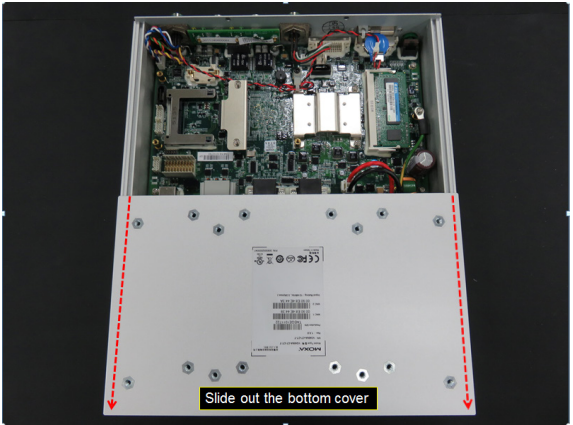


Figure 7

4.2 Installing or Replacing an SSD/HDD

4.2.1 Installing an SSD/HDD in the HDD Tray

Follow the instructions detailed below to install an SSD/HDD in the HDD tray to build the SSD/HDD assembly:

4.2.1.1 Arrange all the components from the hard disk installation package as shown in Figure 8.

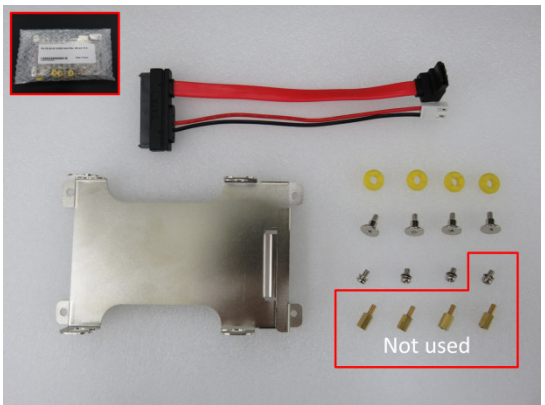


Figure 8

4.2.1.2 Slide in the yellow anti-shock pads into the side notches provided on the HDD tray as shown in Figure 9.

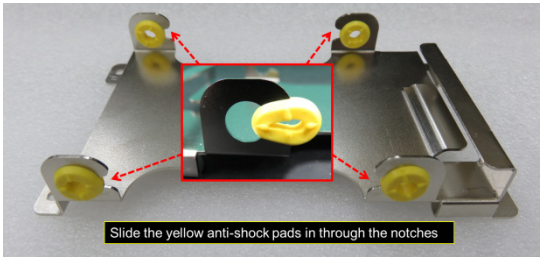


Figure 9

4.2.1.3 Turn the SATA connector clockwise by 90 degrees and gently insert the connector head into the opening on the HDD tray until it completely passes through the opening as shown in Figures 10 and 11.

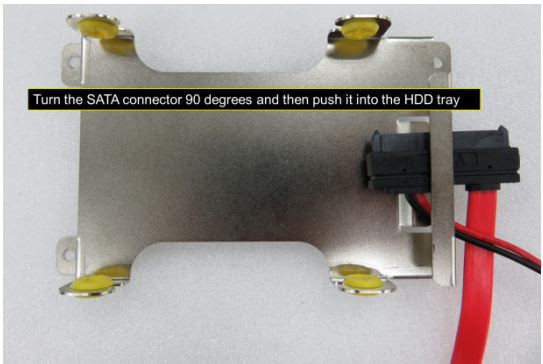


Figure 10

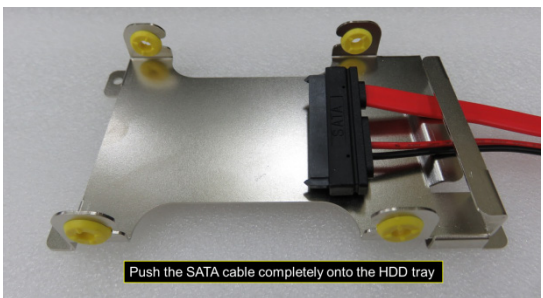


Figure 11

- 4.2.1.4 Connect the SATA cable to the HDD/SSD and fix the HDD/SSD to the tray as shown in Figure 12.



Figure 12

- 4.2.1.5 Use a Phillips screwdriver (item 1 in Table 2) to tighten the four (4) screws to secure the HDD/SSD on to the tray as shown in Figure 13.

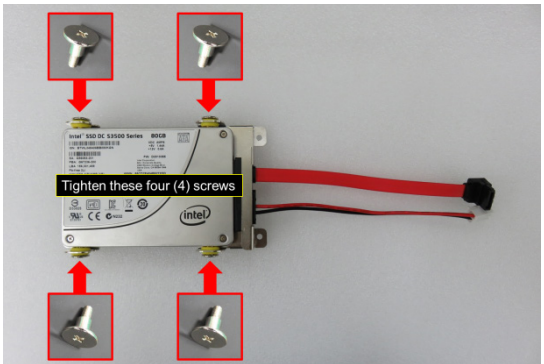


Figure 13

4.2.2 Removing an Existing SSD/HDD

- 4.2.2.1 Disconnect the SATA data cable from the main board as shown in Figure 14.

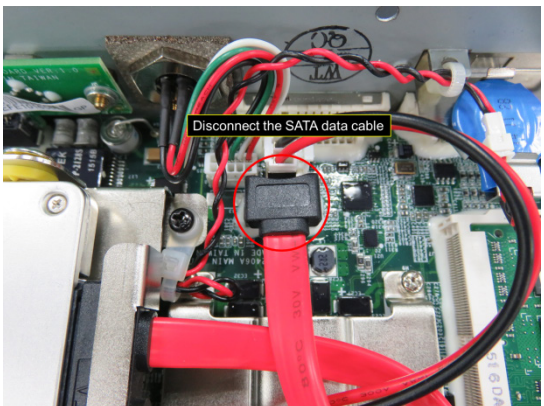


Figure 14

4.2.2.2 Disconnect the SATA power cable from the main board as shown in Figure 15.

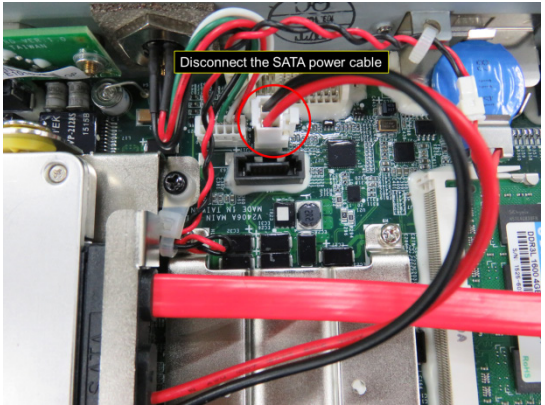


Figure 15

4.2.2.3 Use a Phillips screwdriver (item 1 in Table 2) to remove the four (4) screws that attach the HDD/SSD assembly to the board as shown in Figure 16.

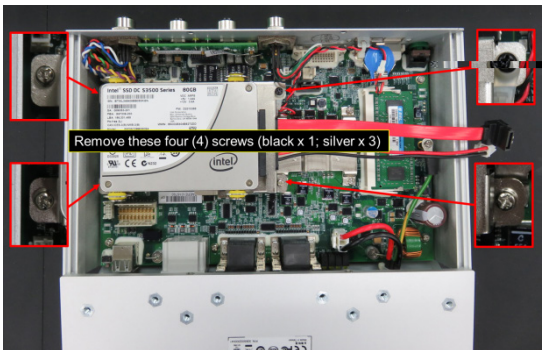


Figure 16

- 4.2.2.4 Gently pull out the HDD/SSD assembly as shown in Figure 17.



Figure 17

- 4.2.2.5 Use a Phillips screwdriver (item 1 in Table 2) to remove the four (4) screws on the HDD tray as shown in Figure 18.

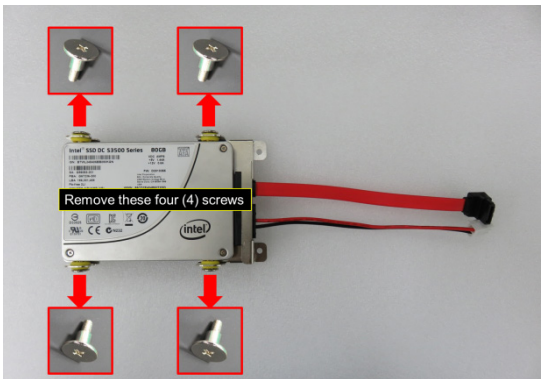


Figure 18

- 4.2.2.6 Disconnect the SATA cable from the HDD/SSD and remove the HDD/SSD as shown in Figure 19.

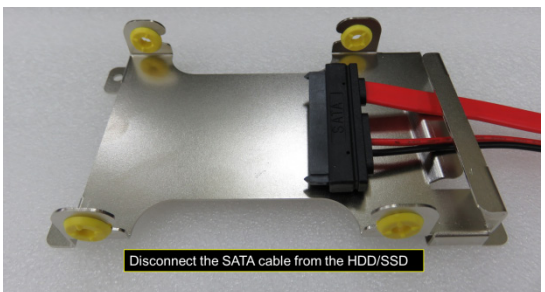


Figure 19

- 4.2.2.7 Connect the SATA cable to the new HDD/SSD and fix the HDD/SSD to the tray as shown in Figure 20.



Figure 20

- 4.2.2.8 Use a Phillips screwdriver (item 1 in Table 2) to tighten the screws (4 nos.) to secure the HDD/SSD to the tray as shown in Figure 21.

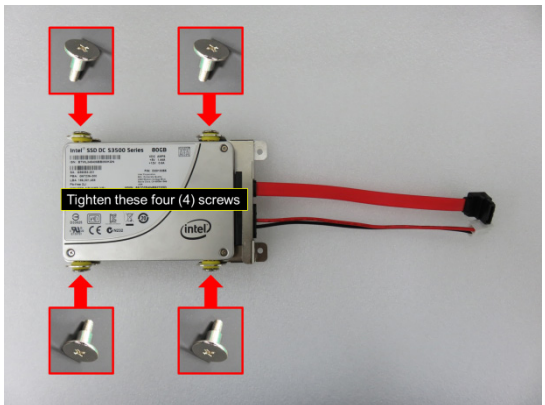


Figure 21

4.3 Installing the HDD/SSD Assembly

To install the HDD/SSD assembly in the installation area on the main board do the following:

- 4.3.1 Use a Phillips screwdriver to remove the black screw located in the HDD/SSD area on the main board as shown in Figure 22.

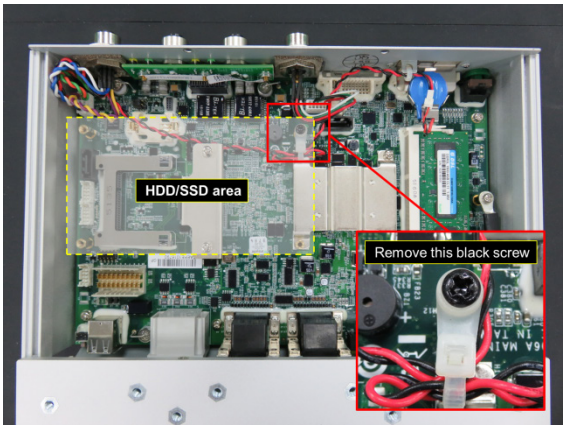


Figure 22

- 4.3.2 Move the cable tie that is holding the wire aside as shown in Figure 23.

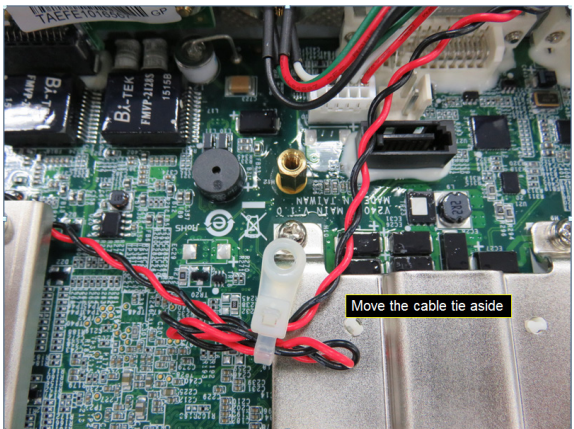


Figure 23

- 4.3.3 Place the HDD/SSD assembly on top of the four pillars in the installation area and put back the cable tie as shown in Figure 24.

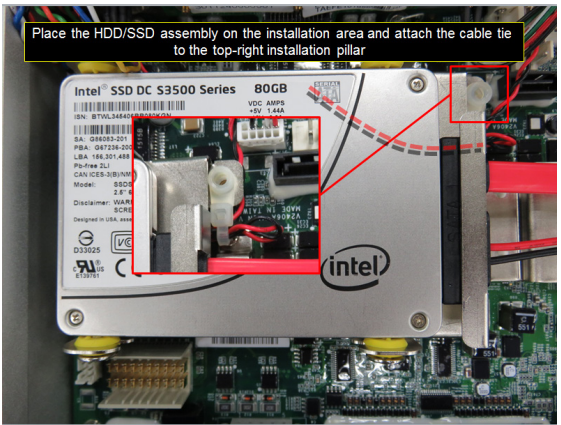


Figure 24

- 4.3.4 Use a Phillips screwdriver to tighten the four (4) screws to fix the HDD/SSD assembly to the board as shown in Figure 25.

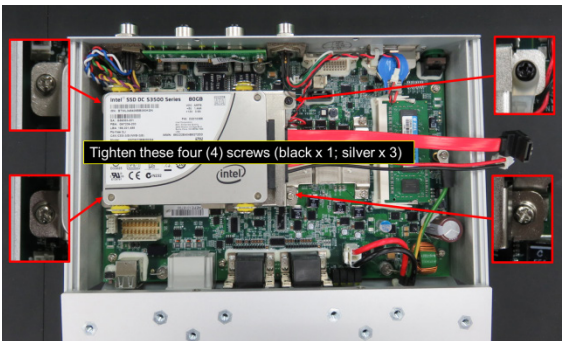


Figure 25

- 4.3.5 Connect the free end of the SATA power cable to the mainboard as shown in Figure 26.

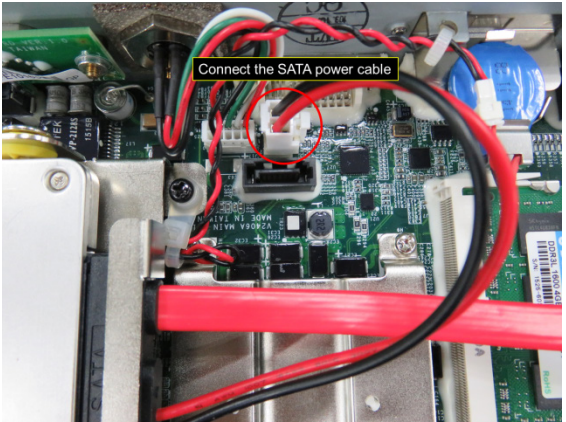


Figure 26

- 4.3.6 Connect the free end of the SATA data cable to main board as shown in Figure 27.

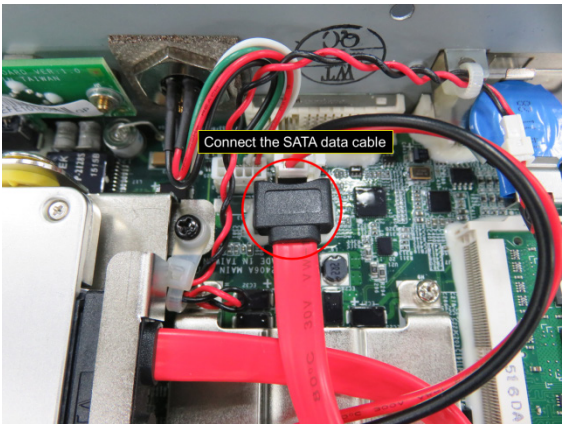


Figure 27

4.4 Reassembling the V2406A Housing

After you have installed the HDD/SSD assembly on the main board, you must reassemble the V2406A housing and secure the same with screws as follows:

- 4.4.1 Slide in the bottom cover of the V2406A from the rear panel towards the front panel as shown in Figure 28. Do this gently and carefully to avoid bending or damaging any wires/cables or fixtures.



Figure 28

- 4.4.2 Align the bottom cover with the position of top cover as shown in Figure 29.

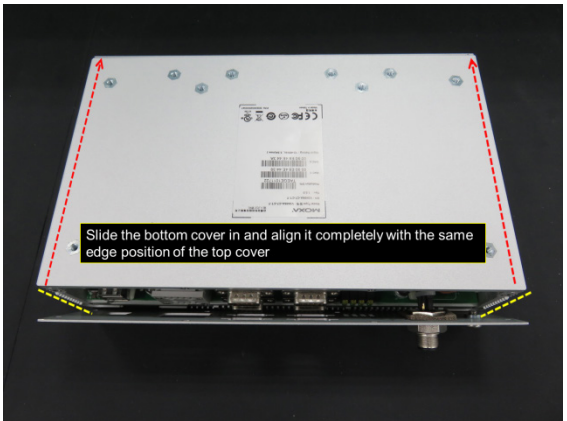


Figure 29

4.4.3 Push the front and rear panels back in place and use a Phillips screwdriver to tighten the ten (10) screws (marked with red circles) on the front and rear panel as shown in Figure 30.

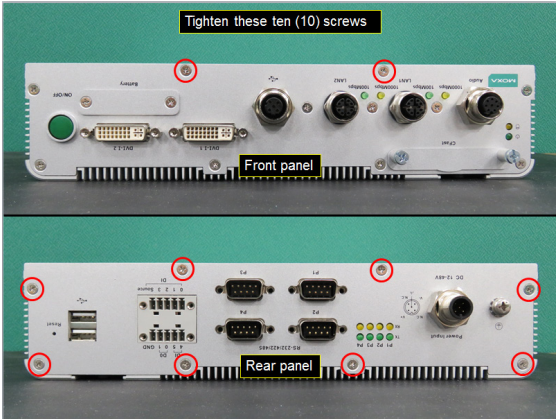


Figure 30

4.4.4 Use a hexagon nut driver to tighten the eight (8) hexagonal screws (marked with red circles) on the front and rear panels as shown in Figure 31.



Figure 31

4.4.5 Put back the two terminal blocks on the rear panel.

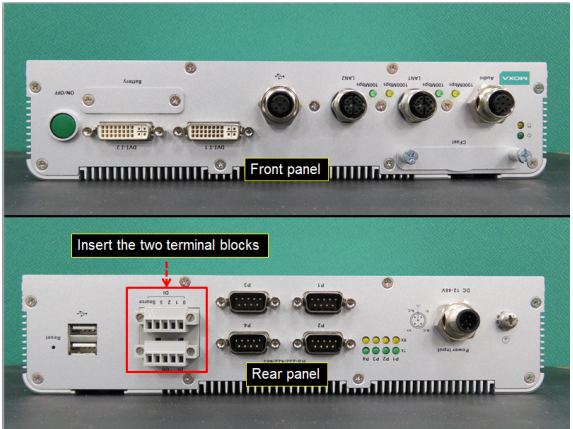


Figure 32

5. Testing the Newly Installed HDD/SSD

To verify that the HDD/SSD that you just installed is working fine, perform the following checks:

- 5.1 Enter the BIOS setup utility by pressing the F2 key while the system is booting up. The main BIOS Setup screen is displayed. Click **SCU** to enter the BIOS configuration.



Figure 33

5.2 In the configuration screen, select **Advanced** → **HDC Configuration** as shown in Figure 34.

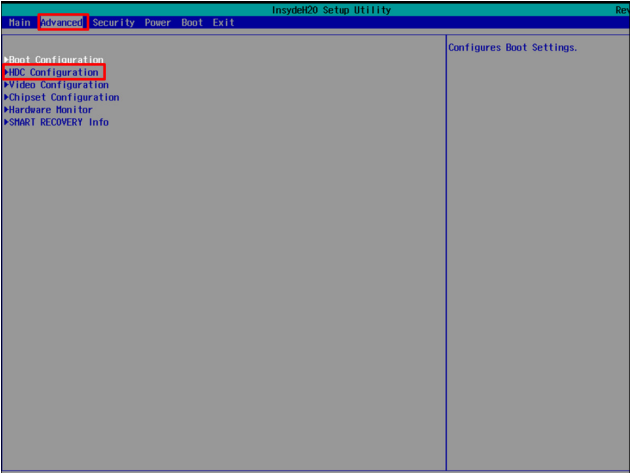


Figure 34

5.3 Verify the information [brand and model] displayed for **Serial ATA Port 3** as shown in Figure 35.

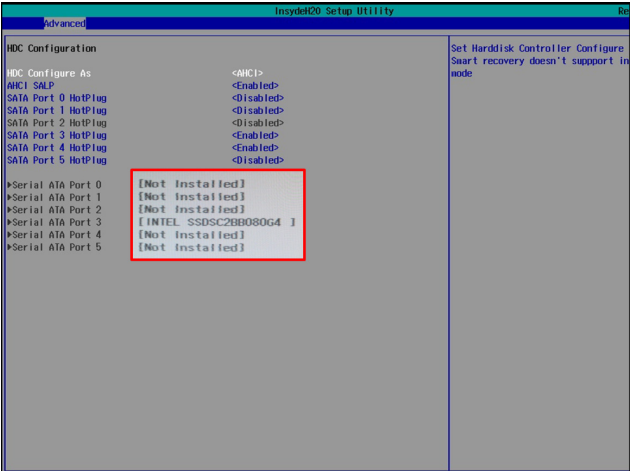


Figure 35

5.4 Select **Exit** → **Exit Discarding Changes** to exit the BIOS configuration utility.

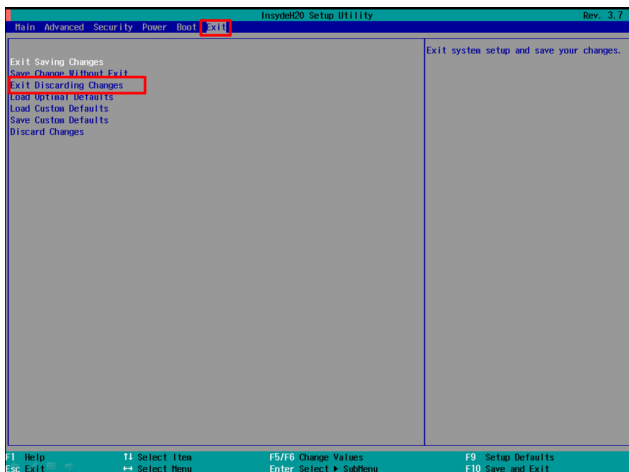


Figure 36

The SSD/HDD installation process is complete. You can now start using the disk.