

# InTouch & System Platform 2017 Update 3 Overview

The AVEVA logo is displayed in white, bold, sans-serif capital letters on a dark teal triangular background. The logo is positioned centrally within a larger graphic that depicts a computer workstation with two monitors and a chair, all set against a background of a 3D industrial plant model.

AVEVA™

The Alarm Grid interface is shown on the left monitor of the workstation. It features a complex dashboard with multiple data points, including bar charts, gauges, and a central grid of colored indicators representing various alarm statuses.

Alarm Grid

The "Live" camera feed interface is shown on the right monitor. It displays a detailed 3D CAD model of an industrial facility, showing various structures, pipes, and equipment. A small inset window shows a live video feed of the same facility.

"Live" camera feed

# Key Takeaways



## Most Secure System Platform version we've ever released!

- ▲ Encrypted communications eliminate threat of Man in the Middle
- ▲ Single Sign On (SSO) logon of users with OS Active Directory Integration



## Increase Engineering Efficiency with OMI Data Driven Model

- ▲ Object Wizards graphics can directly be placed in panes
- ▲ External content linking (documents, videos, images, etc.) with assets and navigation items provide additional context



## Increase Operator usability & user experience

- ▲ All OMI Apps enabled with multi-touch & gesture support
- ▲ InTouch Web Client is full featured browser ready with HTML5 graphics, alarms and trends

# System Platform 2017

## World's first Operations Management Interface (OMI)

### Product Introduction

The operating system for the modern plant. The world's most prolific real-time control platform for Supervisory, SCADA, MES and IIoT application

### Value Proposition

Our automation software provides as much as 40% increased efficiency in meeting changing business & market demands across industrial and manufacturing operations by eliminating the need for scripting, customization and leveraging reusable responsive HMI designs.

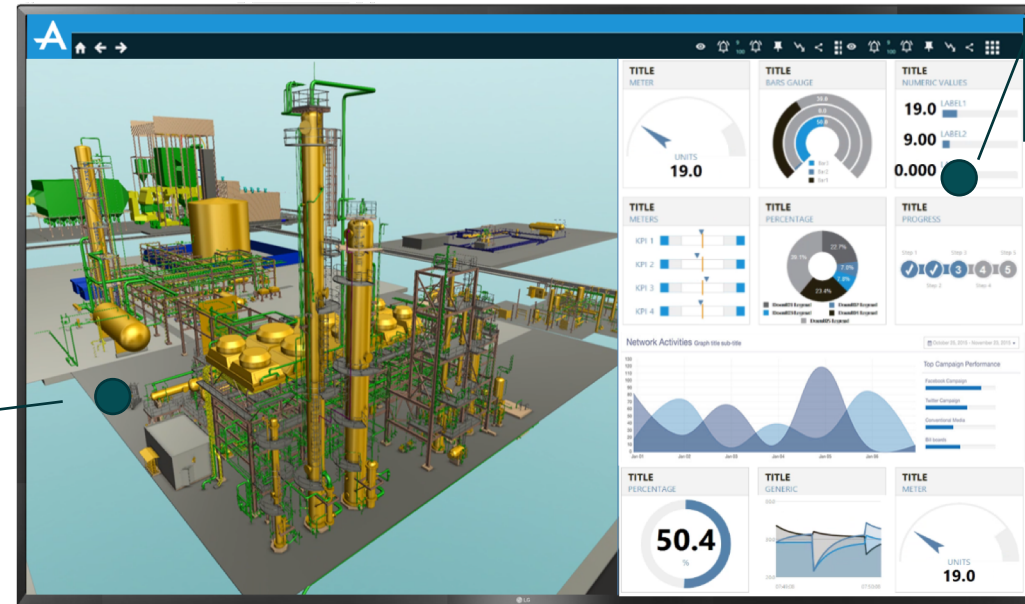
### When it is Used

- Operations Management for hybrid, discrete, continuous manufacturing
- Need for standardization across multi-sites & plants
- Single Version of Truth – Centralized Information for Business Insights
- Running mission critical infrastructure with virtually zero downtime

### How it is Used

- System of System. Unifies all essential system services into a single robust platform. Integrating multi-vendor systems and hardware
- Used to collect and analyze data with historians, intelligence and mobile reporting tools. Plug in MES, Batch & Workflow to streamline operation
- Enterprise wide visibility across Operational and Business organization
- An open and scalable foundation with centralized management to integrate and unify people, information, and processes with flexibility to rapidly adapt to business needs

Operational KPIs  
Status Indicators



3D Site  
Overview

1D and 2D  
Viewers

InTouch OMI  
Navigation Tree



Live Process  
Graphics

Alarm Grid

"Live" camera feed

AVEVA

New functionality

Parity functionality

# System Platform 2017 Update 3

## Expand OMI value, including Parity with InTouch HMI

### Increased Engineering Efficiency

Object Wizards  
Directly in Panes

Advanced Numeric  
Formatting Support

Trend App Pen  
Context

Connector and  
Connection Points

Alarm App Area  
Model

Alarm App Context  
Sharing

Owning Object Multi-  
Galaxy Reference

External Content  
Linking

### Improved User Experience/ Usability

Search Navigation  
Model

ITAA OMI  
Application Listing

Zoom-able Hotspots  
on AA Graphics

Alarm Shelving &  
Management

Touch Behaviors for  
All Apps

IDE - Digital  
Exchange  
Integration

### IT Compliance/ Hardened Security

TLS Encryption

Read-only OMI  
ViewApps

License Server  
Monitoring

Auto-Logout due  
to inactive period

Non-Administrator  
Network Account

Cross Galaxy IDE  
Access

Single Sign On with  
Active Directory



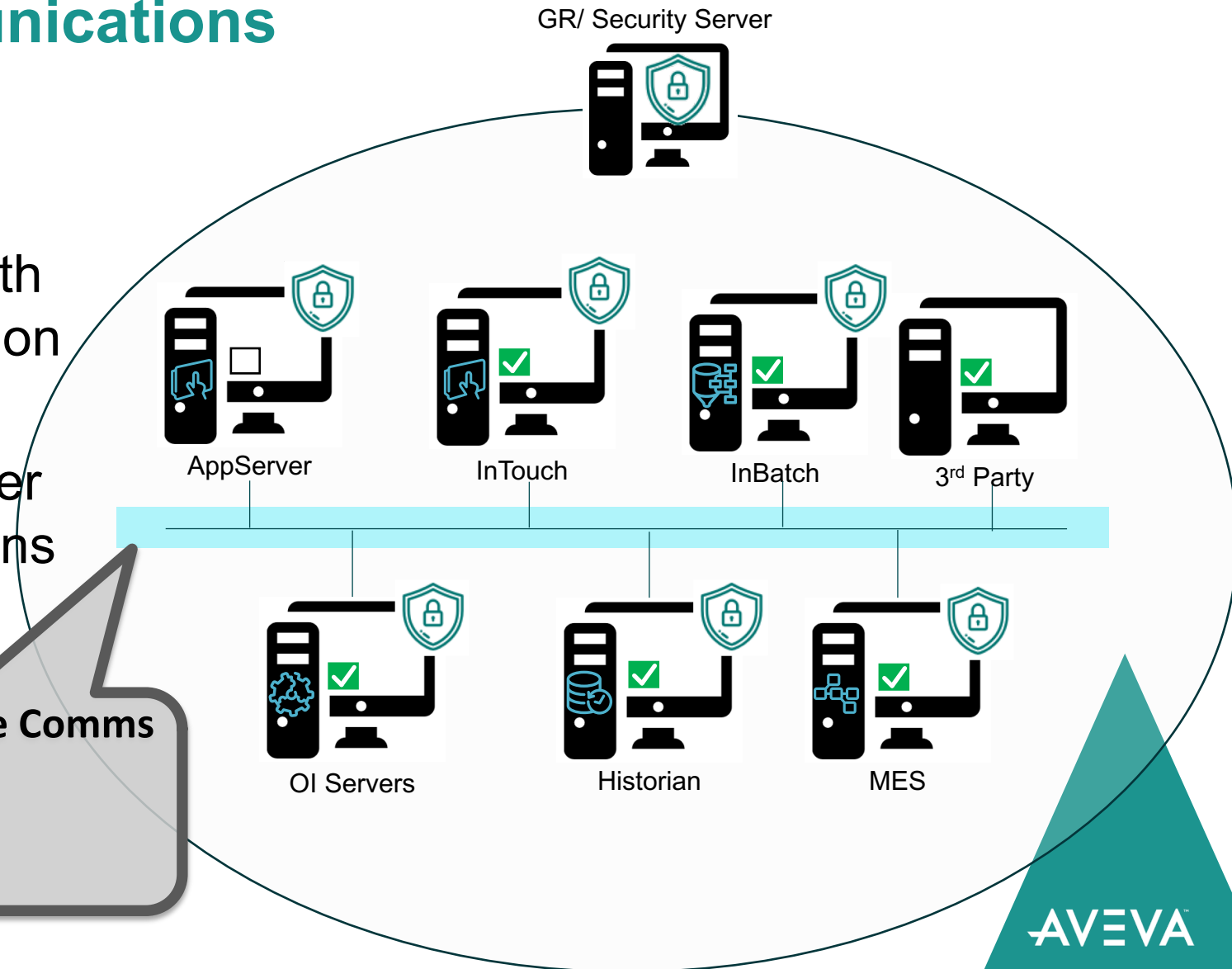
# Enhanced cyber-security hardening to support cloud and mobile

## Secure Encrypted Communications

- ▲ Eliminates Man in the Middle Threats
- ▲ Enhanced TLS 1.2 security with automatic certificates generation and distribution
- ▲ Encrypting external SQL Server database password connections
- ▲ Encrypts Global Data Cache

### All Node-to-Node Comms

- SuiteLink
- MX
- iData



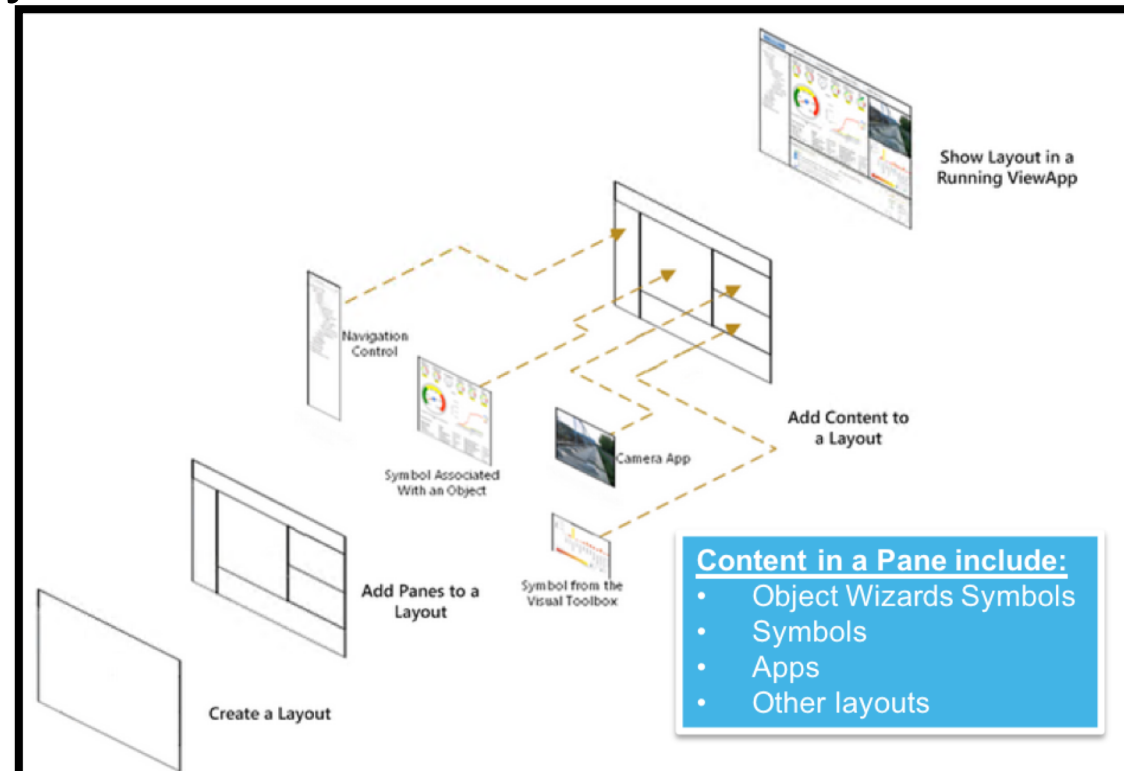
# Object Wizards & Symbol Wizards

## Addressing equipment variability required and enforcing standards

- ▲ Data driven approach extended eliminates need for scripting and heavy engineering effort
- ▲ Object Wizards Symbols can be used directly in OMI panes without embedding in overview graphic which simplified HMI engineering

### Key Benefits:

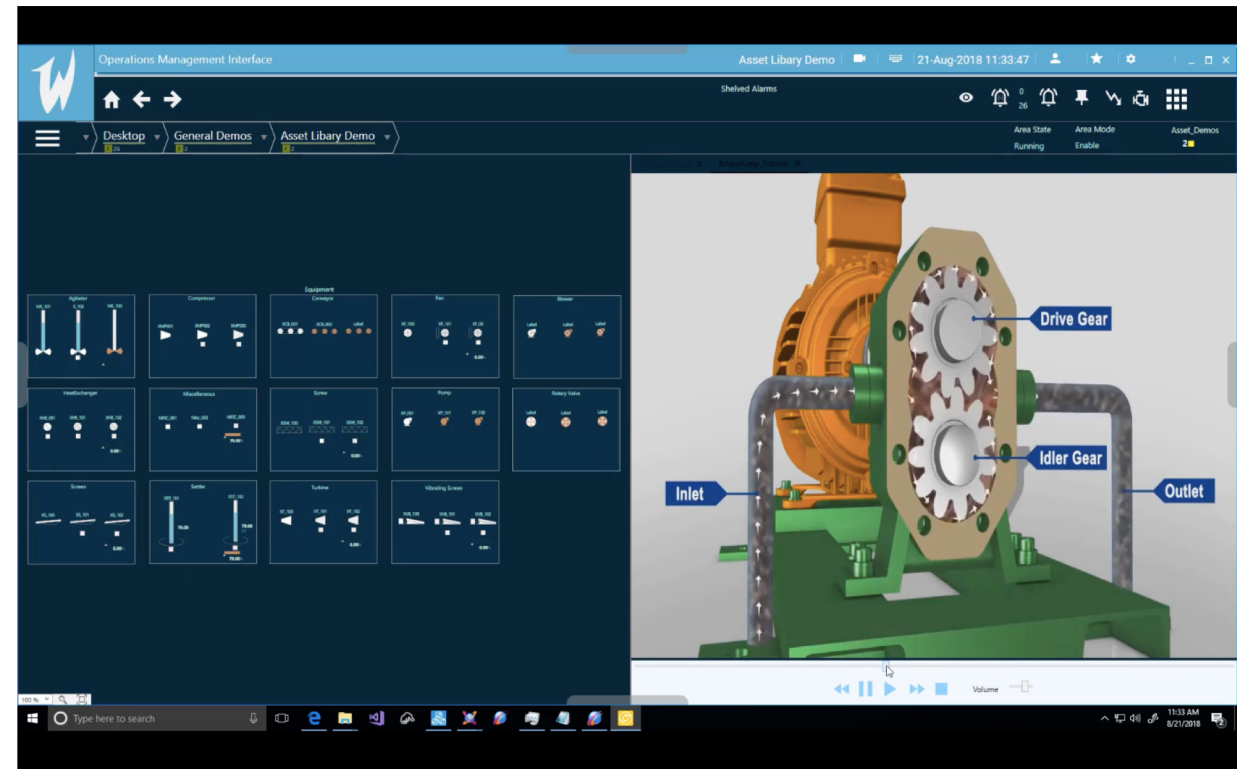
- Ease of Use: Simplified configuration lowers technical knowledge
- Scalability & Manageability: fewer number of templates to accommodate varying behavior/visualization of assets
- Standardization: driving consistency of assets across heterogeneous PLC/controllers vendors



# Link External Content for richer Operational View

## Increase Situational Awareness thru Contextual Information

- ▲ Enable linking external content (documents, videos, images, URLs) with assets and navigation model
- ▲ Operators, Field Workers can see standard operating procedures, 'how to' Videos
- ▲ Integrate existing OEMs HMI screens without re-engineering. Existing System Platform users can launch InTouch HMI displays within OMI



# AVEVA Digital Exchange

## Expanding the OMI Apps content to address IIoT



Discover the New OMI Apps that Enhance your System Platform 2017 Experience

Navigation Explorer Application - Natural Navigation Out of the B...	Recipe Management OMI App	Content Director Application - Ability for Adding Run-Time Conten...	Alarm App
Historical Trend App	Navigation Applications - Rich Navigation tools	jS Wonderware System Platform InTouch Operations Management Inter...	GISize - GEOSpatial App for OMI
Longwatch ViewApp			

Extending your System Platform Run-time with Integrated Applications [See All](#)

GISize! Standard Infrastructure Management Interface for Wonderwa...	WIN-911 Alarm Notification Software	CXs BACnet Schedule	jS OPC Interface
DataHub Tunneller for OPC	DataHub OPC Logger	jS Shift Handover	DataHub OPC Bridge
jS Wonderware Historian Interface	AutoCoding Device Gateway	Alpana Dashboard - Dashboarding Capability Built for Wonderware	Dream Report

Extending your System Platform Engineering with Tools [See All](#)

ENE Developer Tools	Galaxy Toolbox Productivity Tools for System Platform	Galaxy Object Manager	Control Configuration Manager
AutoSave for System Platform	CXs BACnet Application Generator	CXs BACnet Schedule	CXs Ison Device Integration
CXs SNMP Explorer	Flexera Software Monetization Platform	jS OPC Interface	DataHub Tunneller for OPC

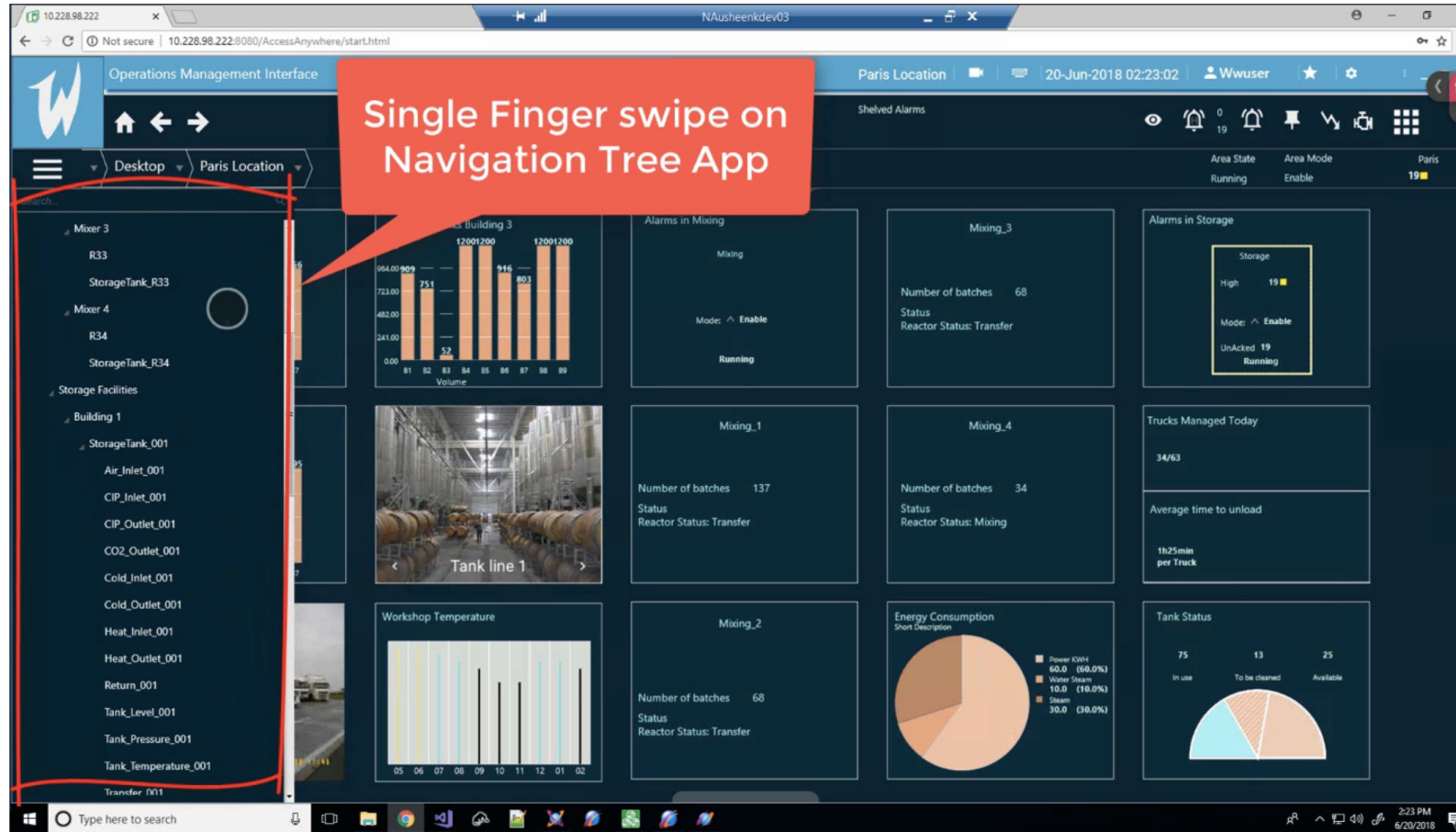
**COMING SOON**

- Doc View App
- Video Player App



# All Apps are Touch friendly

## New SDK provides App Builders the power of Touch

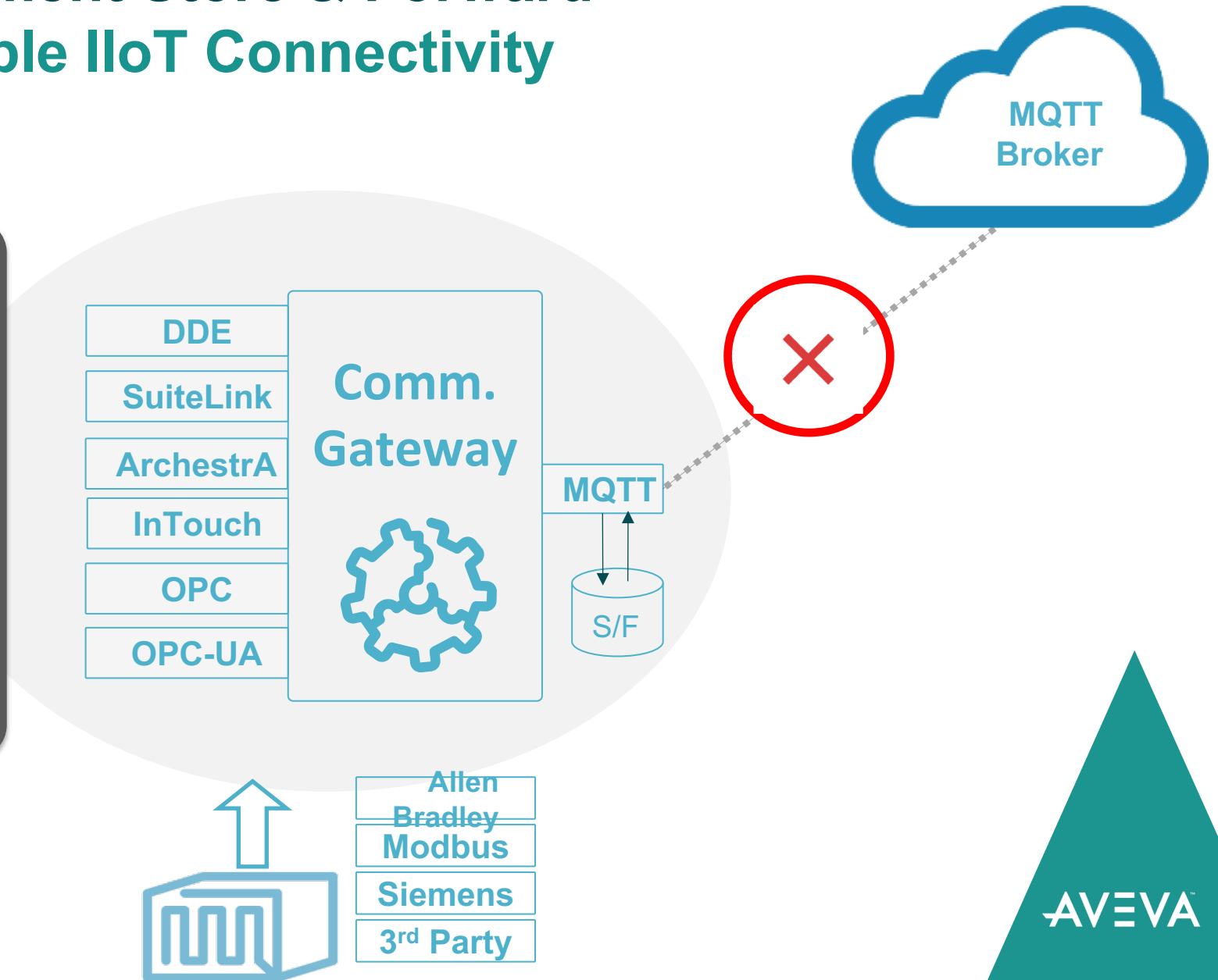


# MQTT Plug-in Enhancement Store & Forward

## Enabling robust & reliable IIoT Connectivity

### MQTT Plug-in

- Simple connectivity to any MQTT Broker
- Security
  - Connection Security
  - Identity Authentication
- Data
  - Simple / Complex Payloads
  - JSON Payload format
- Publisher of Industry Standard Data Sources
- **Store/ Forward**



# InTouch HMI 2017 Update 3



# InTouch HMI 2017 Update 3

## Expanding reach to the cloud and web

New functionality

Parity functionality



### Engineering Efficiency

Cloud Integration  
InSight Publisher

Hyperlink  
Animation

Publish AAG to  
Portals/Web pages

### User Experience/ Usability

HTML5 Trend Client  
(Web Client)

HTML5 Alarm Client  
(Web Client)

Search Navigation  
Tree  
(Web Client)

Numeric Format  
Styles

Alarm Border  
Animation

Connector and  
Connection  
points

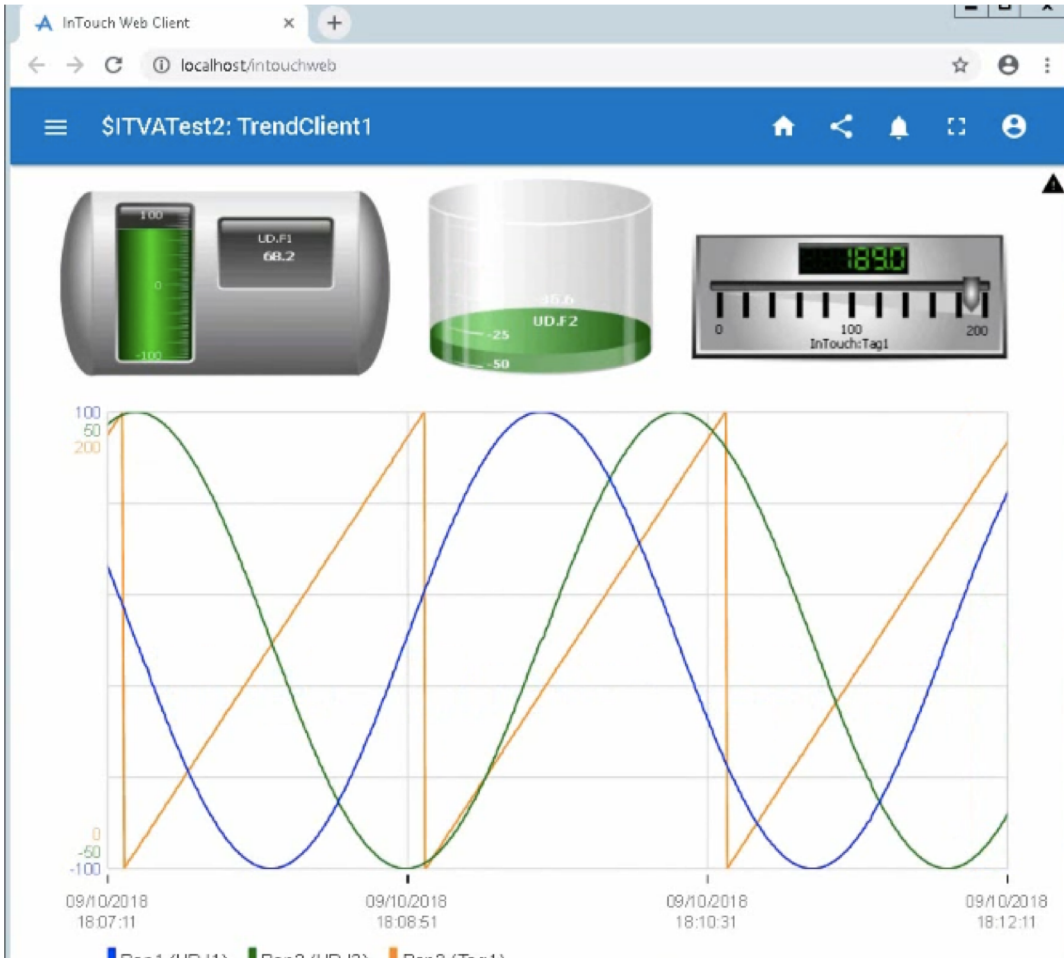
### IT Compliance/ Security

HTTPS  
Support



# New HTML Alarm and Trend Client

## Protect your engineering investments in InTouch



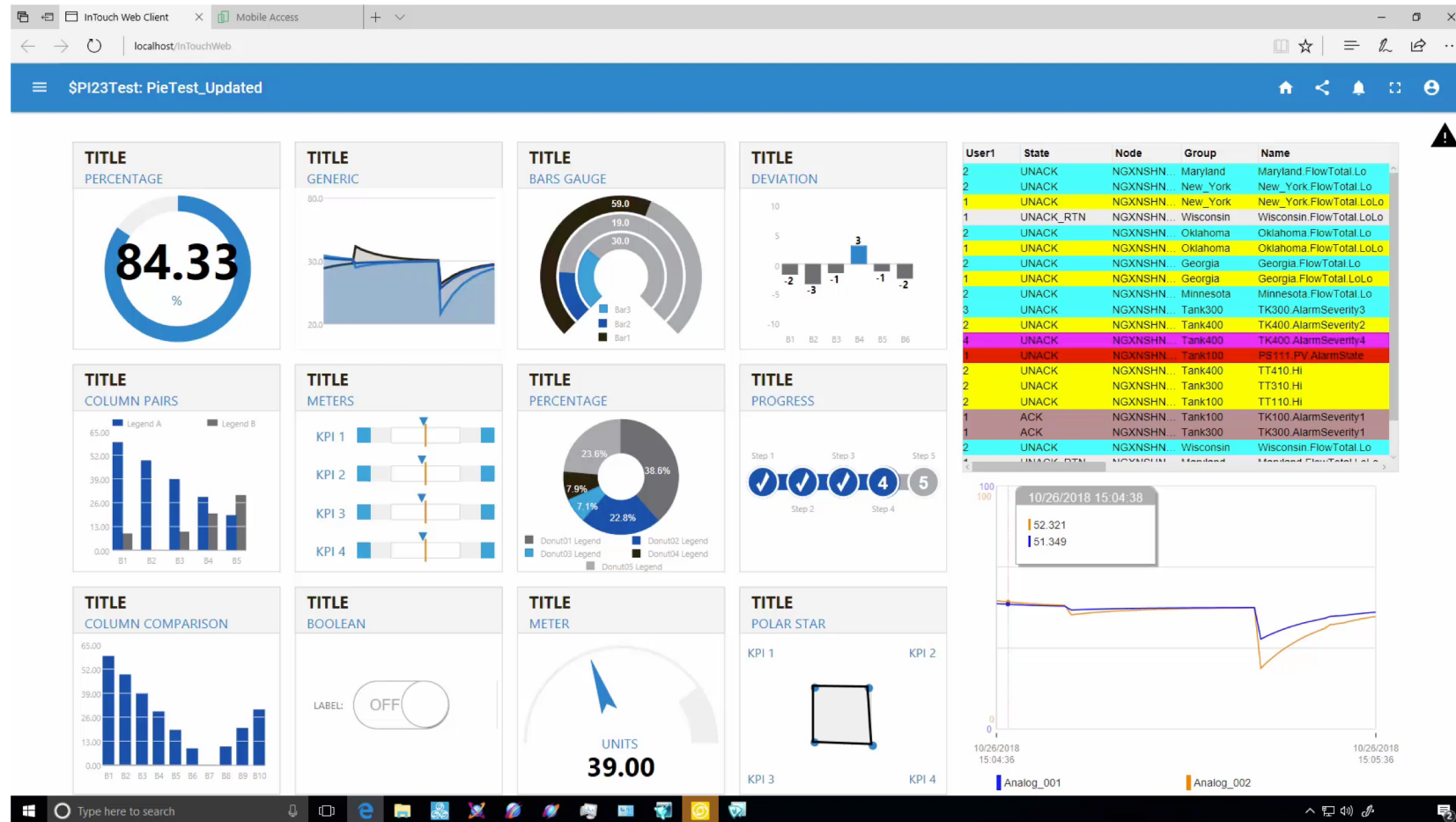
The screenshot shows the 'AlarmDemo' interface. At the top, there are two gauges: a vertical scale gauge labeled '8.0 Gal' and a cylindrical tank gauge labeled '5.0 Label'. Below the gauges is an 'Alarm Summary' table with the following data:

User1	State	Node	Group	Name	Value	AlarmComm
0	UNACK	INTOUCHAUT	\$System	Tag1	5	
1	UNACK	INTOUCHAUT	Area1	UD I1 LoLo	8	Enter attribute d
2	UNACK	INTOUCHAUT	Area1	UD I1 Lo	8	Enter attribute d

Below the table is a large green area with the text 'Web Alarm Client' in blue. To the right of this area is a purple arrow pointing to a window titled 'EAC' (Event Action Client) which shows a gauge with a value of 8.0 Gal and an 'Alarm Summary' table with the same data as the main interface. Below the 'EAC' window is a status bar that says 'Displaying 1 to 3 of 3 alarms; Query: Default; Filter: T'. At the bottom of the screenshot, there is a blue banner with the text 'Alarm Control in Web Client'.

# InTouch Web offers browser support for existing InTouch applications without any re-engineering

## HTML5 Graphics, Alarms and Trend support



# Previous Enhancements



# InTouch HMI 2017 Update 2

## Increased Engineering Efficiency

- QuickScript .NET functions are available for ArchestrA Graphics scripting
- Enhanced workflow for web client publishing enabling rapid iterative development & testing

## Increased Usability of the Web Client

- Web Client supports comprehensive set of ArchestrA Graphics
- Web Client improved look and feel in full screen browser mode
- Web Client Improved display rendering performance
- Web Client support across all majors browsers (IE, Edge, Chrome, Safari)
- Web Client supports mobile devices (iOS and Android OS)
- Web Client supports pan & zoom across all major browsers

## IT Compliance & Reliability

- Alarm DB Logger and related utilities support OS authentication in addition to SQL authentication
- Managed Applications do not require Admin privileges
- WindowViewer OS Shutdown Event Handling - enables activated license release when detecting the OS is ending a Remote Desktop session



# System Platform 2017 Update 2

## Engineering Efficiency

- OMI Live Preview
- ViewApp Namespace
- 'Show Content' API

## User Experience & Usability

- Enhanced Navigation Tree with Search built-in
- Alias Names for Assets in the Navigation Model
- User defined navigation hierarchy

## IT Compliance

- Ability to run Integrated Development Environment (IDE) no longer requires ADMIN privileges

**in** [linkedin.com/company/aveva](https://www.linkedin.com/company/aveva)

 [@avevagroup](https://twitter.com/avevagroup)

**About AVEVA**

AVEVA is a global leader in engineering and industrial software driving digital transformation across the entire asset and operational life cycle of capital-intensive industries.

The company's engineering, planning and operations, asset performance, and monitoring and control solutions deliver proven results to over 16,000 customers across the globe. Its customers are supported by the largest industrial software ecosystem, including 4,200 partners and 5,700 certified developers. AVEVA is headquartered in Cambridge, UK, with over 4,400 employees at 80 locations in over 40 countries.

**[aveva.com](https://www.aveva.com)**

The AVEVA logo is displayed in white, bold, uppercase letters. The letter 'A' is stylized with a horizontal line extending to the left. The logo is positioned on a large, teal-colored triangular graphic that dominates the right side of the slide. The triangle is composed of two overlapping shapes: a smaller, darker teal triangle on the left and a larger, lighter teal triangle on the right, both pointing upwards.