

# PAC Machine Edition

## Integrated Software for PACSystems Devices

PAC Machine Edition (PME) provides PACSystems users an integrated environment to configure and maintain control applications. This software supports a wide range of devices such as HMIs, PLCs, VFDs, servos, and edge devices. PME utilizes a common user interface, drag-and-drop editing, and a rich set of development tools to develop control applications efficiently.

PME increases productivity by reducing the time and resources needed for programming, commissioning, and monitoring.

### Improve Efficiency through Tight Integration

In addition to sharing common development tools, all PAC Machine Edition components — View, Logic Developer, and Motion Developer — share a common database and common objects across applications. Including logic, scripts, and animation, PME allows for control logic in one integrated development environment. This establishes an entire automation portfolio which is programmed, configured, and maintained by a single toolchain. So once a variable is created, it can easily be used in all other components of the project. PAC Machine Edition allows the user to open multiple PAC Machine Edition sessions on one PC and then connect each session to a controller simultaneously. This allows the user to view multiple, operating application programs at the same time, from a single PC.

### Boost Productivity through Reusable Modules

Combining the best of traditional programming and graphics applications, PME features Object Oriented Reusability to save time during configuration. Users can build applications rapidly with user defined function blocks, user defined types,



and control modules. These reusable type definitions allow the development of controls logic to be done in an object oriented fashion.

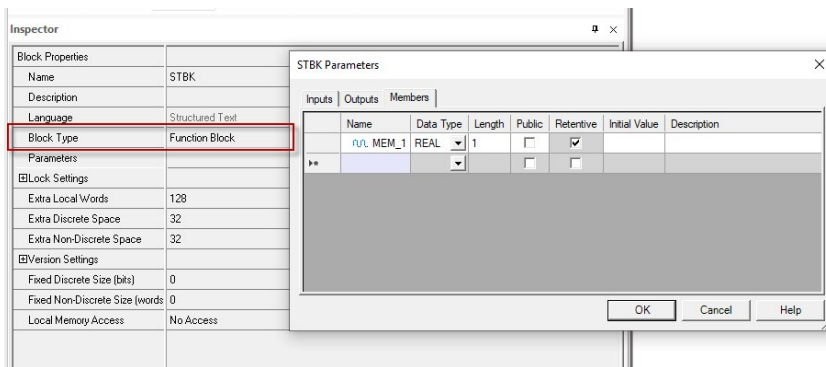
### Add Flexibility and Scalability in Control Environments

Seamless integration with Change Management allows end users to safely configure and manage small to large applications. PME also supports multiple targets in a single project, allowing you to scale appropriately based on the application. Due to its support of extensive communication protocols, PME excels in a variety of industrial markets segment, including water/wastewater, oil & gas, power renewables, mining and marine. Built-in diagnostics allow users to display controller status, timestamp data and faults. In addition, Logic Developer provides comprehensive configuration for controllers and I/O. The result is a flexible system that can meet your control needs.

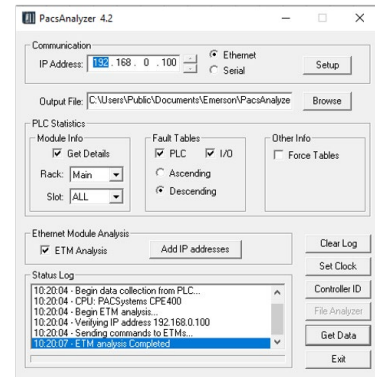
### The Right Programming Languages

PME supports IEC-1131-3 editors including ladder logic, structured text, and function block diagrams. This gives you the freedom to use the best language for your application.

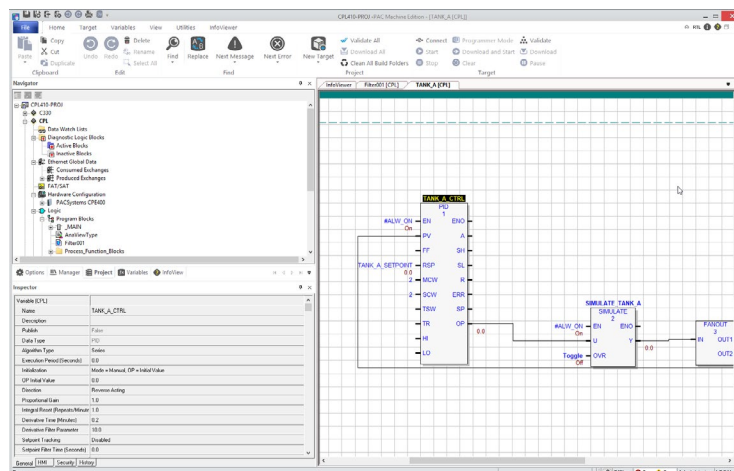
Feature	Benefit
<b>Single Toolchain</b>	<ul style="list-style-type: none"> <li>The entire automation portfolio is programmed, configured, and maintained by a single toolchain</li> </ul>
<b>Fully Integrated Development System</b>	<ul style="list-style-type: none"> <li>Allows building HMI panels and controls logic in one integrated development environment</li> </ul>
<b>Hardware Configuration</b>	<ul style="list-style-type: none"> <li>Configure controller and I/O</li> </ul>
<b>Control Logic Configuration</b>	<ul style="list-style-type: none"> <li>IEC-61131 compliant</li> <li>Structured text, relay ladder diagrams, function block diagrams, native C blocks support</li> <li>Over 140 blocks with over 30 advanced blocks for demanding applications</li> </ul>
<b>Object Oriented Reusability</b>	<ul style="list-style-type: none"> <li>Build applications rapidly with preconfigured objects from the Tool Chest, a storage system for objects including their associated logic or HMI elements and data structures</li> </ul>
<b>Built-in Diagnostics</b>	<ul style="list-style-type: none"> <li>Allows users to display controller status, timestamp data and faults</li> </ul>
<b>Common Data Base</b>	<ul style="list-style-type: none"> <li>Improved productivity with share tags across multiple targets</li> </ul>
<b>Common Tool for Control and Visualization</b>	<ul style="list-style-type: none"> <li>Simple integration for asset management</li> </ul>
<b>Multiple Sessions</b>	<ul style="list-style-type: none"> <li>Increased system uptime by reducing commissioning time and debugging</li> </ul>
<b>PROFINET Integration Tools</b>	<ul style="list-style-type: none"> <li>Fast &amp; simple configuration and diagnostic of distributed I/O networks</li> </ul>
<b>Supported Communication Protocols</b>	<ul style="list-style-type: none"> <li>EGD, SRTP, Modbus, DNP3, and OPC UA (Non-Transparent Server Redundancy) among others</li> </ul>



User defined function blocks



Built-in diagnostics



PME Integrated Development Environment (IDE)

## Product Offerings

PAC Machine Edition Products	Features													Part No.
	PACSystems RX3i & RX7i	PACSystems RSTi-EP	Series 9030 & Series 9070	QuickPanel & QuickPanel+	VersaMax	RIO VersaMax & 90-30	View Runtime	View Development	PC Control Runtime	PC Control Development	View OPC Driver	Process Block Library	View and PC Control Points	
<b>Professional Development Suite*</b>	✓	✓	✓	✓	✓	✓	✓	✓	✓	✓	O	✓	700 a 1500 (O), 8000 (O)	MEMBP001
<b>Lite Development Suite</b>		✓		✓	✓	✓		✓		✓			None	MEMBL001
<b>QuickPanel CE Development Suite</b>				✓		✓		✓		✓			None	MECSCEMK

✓ – Included in product. O – Optional feature (selection made in configurator)

\*Professional Development Suite has 700 points in the base product. There is an option to increase the points to either 1500 or 8000. The View OPC Driver can be ordered as an option to the Professional Development Suite.

## Ordering Information

Part Number*	Description
<b>MECSCEMK</b>	PAC Machine Edition QuickPanel (CE) Control Development Suite
<b>MEMBL001</b>	PAC Machine Edition Lite Development Suite
<b>MEMBP001</b>	PAC Machine Edition Professional Development Suite

\*generic part numbers, actual number will vary based on version and options selected (ex. ME98MBP001) use Sales Force configurator to identify part number

**United State Office**  
Emerson Automation Solutions  
Intelligent Platforms, LLC  
2500 Austin Dr  
Charlottesville, VA

**Singapore Office**  
Emerson Automation Solutions Intelligent  
Platforms Asia Pacific Pte. Ltd.  
1 Pandan Cres,  
Singapore, 128461

**Brazil Office**  
Emerson Automation Solutions  
Av. Hollingsworth, 325 – Iporanga  
Sorocaba – SP, 18087-105

**China Office**  
Emerson Automation Solutions Intelligent  
Platforms (Shanghai) Co., Ltd  
No.1277, Xin Jin Qiao Rd, Pudong,  
Shanghai, China, 201206

**Germany Office**  
Emerson Automation Solutions  
ICC Intelligent Platforms GmbH  
Memminger Straße 14  
Augsburg, DE 86159

**India Offices**  
Emerson Automation Solutions  
Intelligent Platforms Pvt. Ltd.,  
Building No.8, Ground Floor  
Velankani Tech Park, No.43  
Electronics City Phase I, Hosur Rd  
Bangalore-560100

**Americas Support – Technical and Commercial**

Phone: 1-888-565-4155 or 1-434-214-8532 (if toll free 800 option is unavailable)  
Email for Technical Support: support.mas@emerson.com  
Email for Commercial Support: customercare.mas@emerson.com  
Primary language of support: English

**Europe, Middle East, & Africa Support – Technical and Commercial**

Phone: +800-4-444-8001  
or +420-225-379-328 (if toll free 800 option is unavailable or dialing from a mobile telephone)  
Email for Technical Support: support.mas.emea@emerson.com  
Email for Commercial Support: customercare.emea.mas@emerson.com  
Primary languages of support: English, German, Italian, Spanish

**Asia Support – Technical and Commercial**

Phone: +86-400-842-8599 for Greater China  
+65-6955-9413 (All Other Countries)  
Email for Technical Support: support.mas.apac@emerson.com  
Email for Commercial Support Asia: customercare.cn.mas@emerson.com  
Primary languages of support: Chinese, English

**Support Website:** [www.emerson.com/iac-support](http://www.emerson.com/iac-support)

**Home Website:** [www.emerson.com/industrial-automation-controls](http://www.emerson.com/industrial-automation-controls)

©2020 Emerson. All rights reserved.

The Emerson logo is a trademark and service mark of Emerson Electric Co. All other marks are property of their respective owners. The contents of this publication are presented for information purposes only, and while effort has been made to ensure their accuracy, they are not to be construed as warranties or guarantees, express or implied, regarding the products or services describe herein or their use or applicability. All sales are governed by our terms and conditions, which are available on request, We reserve the right to modify or improve the designs or specifications of our products an any time without notice.

