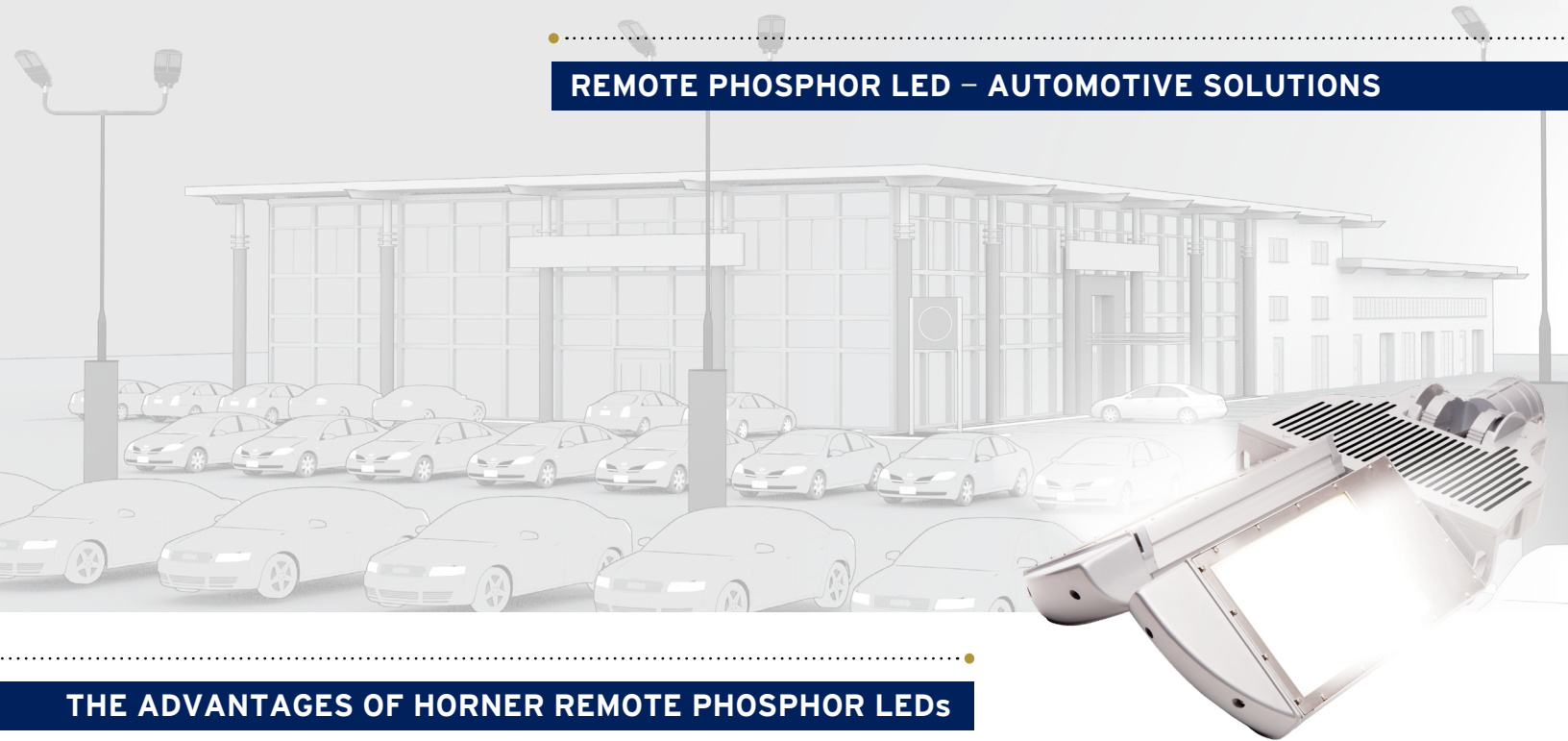


REMOTE PHOSPHOR LED – AUTOMOTIVE SOLUTIONS



THE ADVANTAGES OF HORNER REMOTE PHOSPHOR LEDs

Horner's remote phosphor outdoor lighting fixtures are engineered and designed using patented LED technology to provide more usable light out of the fixture at a lower wattage than conventional LED fixtures. The A-Series can include wireless control, dimming options and surge protection.

	200 WATT	300 WATT	HIGH-INTENSITY DISCHARGE* 400 WATT	HIGH-INTENSITY DISCHARGE* 1,000 WATT
HORNER LIGHTING GROUP SECURITY LIGHTING SOLUTIONS - REMOTE PHOSPHOR LED TECHNOLOGY				
SYSTEM WATTS	230	320	465	1165
PROJECTED LIFESPAN	100,000+	100,000+	16,000 - 24,000	16,000 - 24,000
kWh USED OVER 100,000 hrs.	23,000 kWh	32,000 kWh	46,500 kWh	116,500 kWh
COST OF ELECTRICITY (@ \$.11/kWh)	\$2,530	\$3,520	\$5,115	\$12,815

TOTAL % ENERGY SAVINGS†

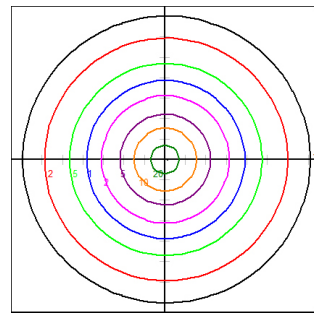
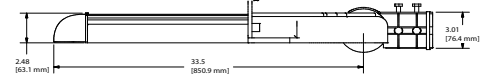
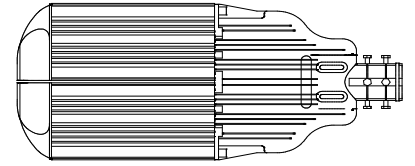
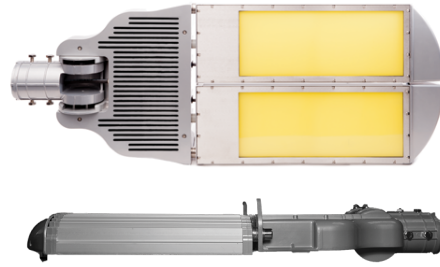
51%

80%

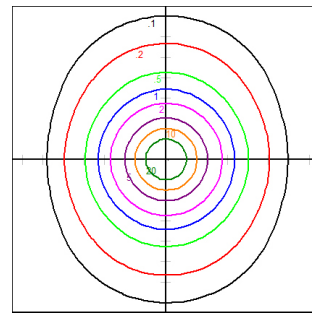
* High-Intensity Discharge (HID) includes: Mercury Vapor, Metal Halide and High Pressure Sodium
†Based on savings from the 200W option

BENEFITS:

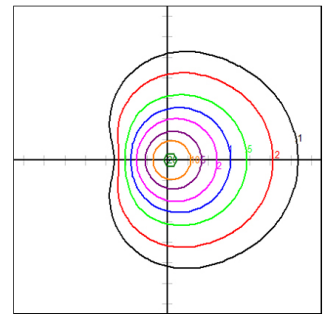
- Commercial grade adjustable housing, making it the only fully adjustable fixture on the market designed for parking lot dealership applications.
- Highest color resolution and uniform light distribution compared to conventional LED fixtures.
- Integrated control interface hardware including wireless communication, motion, and ambient light sensing
- Instant-strike eliminates warm-up wait times
- Over 30% higher light output / wattage consumption over conventional LED technology.
- Minimal to no light loss within the fixture allowing maximum light distribution
- Mercury-free
- 5 year warranty
- Made in USA with global components



A300 Standard



A300 Split 20°



A300 Split & Tilted 20°

MODEL	PRODUCT NUMBER	CRI	CCT	LUMENS*	TOTAL WATTS	LUMENS / WATTS	L90 @ 45°C / HOURS
ETG-A200†	RP750	70	5000K	20,890	230	91	> 96,000
ETG-A300	RP750	70	5000K	29,200	320	91	> 96,000
	RP840	80	4000K	27,676	320	90	> 96,000
	RP835	80	3500K	26,660	320	88	> 96,000
	RP930	90	3000K	20,948	320	70	> 96,000
	RP830	80	3000K	25,645	320	85	> 96,000
	RP927	90	2700K	20,440	320	68	> 96,000
	RP827	80	2700K	22,852	320	77	> 96,000
	RP9456	90-94	5600K	25,600	320	80	> 96,000
ETG-A300H	RP850R	80*	5000K	33,288	320	104	> 96,000
	RP940R	90*	4000K	31,650	320	99	> 96,000

*Red Enhanced *Estimate, †see Horner for additional ETG-200 options

PRODUCT NUMBER	POWER
P1	ON/OFF 90~305 VAC
P4	Dimming 90~305 VAC
P8	Dimming 24 VDC
P7	INTERNAL 480 VAC Dimming

PRODUCT NUMBER	HOUSING COLOR
G	Gray
W	White
B	Black
F	Forest
Z	Bronze

PRODUCT NUMBER	OPTION
D1	Step Dimming 30-100%
D2	Step Dimming 50-100%
D3	Step Dimming Adjustable
G1	120V Plug (demo)
L1	Photo Sensor 120 VAC
L2	Photo Sensor 240/277 VAC
L3	Photo Sensor 480 VAC
W1	Wireless ON/OFF with Dimming
W2	Wireless +0-10 Input
W3	Wireless Thermistor
W4	Wireless +24 VDC

EPA & WEIGHT CALCULATIONS						
MODEL	APPROX. WEIGHT 120-480V	SINGLE	2@ 180°	2@ 90°	3@ 90°	4@ 90°
Adjustable Slip Filter Mount						
ETG-A300	29lbs. 3 oz. (13.24 kg)	.93	1.85	1.32	1.85	2.60