

NEXT GENERATION REMOTE PHOSPHOR LED LIGHTING SOLUTIONS

THE HORNER ADVANTAGE

Horner Lighting Group Indoor Remote Phosphor (RP) fixtures provide an innovative approach for creating increased light output and sustainable energy savings in LED lighting applications. With Remote Phosphor Technology, the phosphor is separated from the LED itself and utilized in a remote substrate or plate. White light materializes when Royal Blue LED light passes through the remote phosphor, creating one visible light source, the phosphor itself, rather than several glaring diodes.

This new advanced technology creates glare reduction, less color shift, increases efficiency, reduced heat, and lifecycle enhancement. With proven success in a wide variety of applications, Horner Indoor RP fixtures are ideal for:

- Retail Sales Environments
- Auto Dealerships
- Warehouse or Factory
- Grocery Industry
- Security Lighting
- High-detail Inspection Settings
- Gymnasiums
- Automated Lighting Systems



LINEAR LIGHTING

The award-winning, state-of-the-art Horner LED Linear Remote Phosphor (LRP) series offers the greatest flexibility to suite a variety of applications. Available with high, medium, and low bay reflector options, the LRP series can be equipped with a variety of controls options, including various automation, dimming, and power options. Sizes also fit any application - available up to 8 tubes per fixture, 4 or 8 foot sections.

The sleek, rugged LRP design and variety of luminaire output options leads to time savings during installation and long-term energy cost savings. A variety of CRI and lumen output options can be customized to fit any illumination need, from detailed settings requiring a high CRI to aisle or warehouse work environments needing sufficient, safe light.

REMOTE PHOSPHOR BAY LIGHTING

In addition to the LRP series, Horner offers several bay and task lighting solutions. The Remote Phosphor BL Series Bay lighting options feature large-area luminaires. Lumen output exceeds traditional HID competition for a fraction of the energy cost, saving up to 30%. Perfect for commercial applications and indoor loading areas.

RP Bay lighting designs are versatile and extend into several different light groups. With standard mounting options and a wide range of AC inputs, the C80 ceiling light can be used in settings from gymnasium lighting to larger retail settings. Easy, flexible installation leads to replacement of older, inefficient fixtures.

RED ENHANCED TECHNOLOGY

Some applications benefit greatly from lighting systems that have higher red content. Horner Lighting has determined that red light passes through the phosphor material with very little change in wavelength or output. This enables blending blue and red LEDs behind the phosphor to increase the red content of the light source. This not only increases the color rendering index (CRI) of the light, but also creates a three peak light source that slightly saturates colors making them appear more pleasing.

LIGHTING CONTROLS

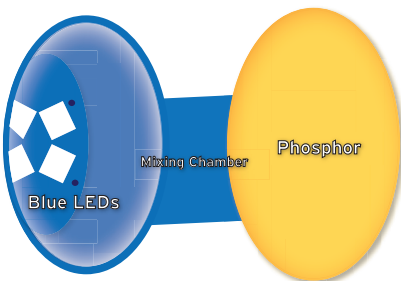
The Horner suite of control products allow for easy monitoring of all lighting functions, including dimming, motion control, occupancy, and ambient light sensing, resulting in cost savings and increased site management. Viewable on-site or from a remote location, the Horner suite is easy-to-install and easily customizable with our cost-free software platform, Cscape.

Horner OCS Controllers offer an intelligent combination of lighting management, energy usage data-logging, and a user friendly touch-screen interface. The control devices are ready to use, and can be programmed to work with any lighting needs in an all-in-one package.



WHAT IS REMOTE PHOSPHOR TECHNOLOGY?

Traditionally, white LED light is produced from a layer of phosphor adhered to on top of a royal blue LED. Over time, as heating cycles take effect, the adhesion begins to disintegrate and the phosphor layer "lifts" from the blue LED around the edges. This causes both depreciation of color and light output, as less of the light passes through the phosphor.



With Remote Phosphor technology, the phosphor is removed from the LED itself and relocated. Royal blue LEDs illuminate behind the phosphor material, causing it to emit bright white light. The phosphor density can change light output color, and LED arrangements can be specialized for red enhanced CRI. With the phosphor and LED separated, less heat is generated, and the phosphor remains at a constant, even exposure to the royal blue LEDs, generating a longer-lasting, more consistent light.





www.hornerlighting.com



DL-Series Can Downlighting



DL6D



DL6A

Standard Base Specifications*			
Fixture Life Hours		>50,000	>50,000
Fixture Watts		14W	16W
Fixture Lumens (est)		800	1,000
Lumens/Watt		57	63
CRI†		80	80
CCT		3000K	3000K
Ambient Temperature		-25°C to 45°C	-25°C to 45°C
Mounting		6" Can	6" Can
Power		120 V	120 V
Optional Power		n/a	120-277 VAC (GU24 base only)
IP Rating		IP50	IP50
Fixture Weight		2.08 lbs / 943 g	2.6 lbs / 1.18 kg
Fixture Color		White	White
Light Distribution		90°	90°
Warranty		3 year	3 year
Optional Features			
Automation		✓	✓
Motion Control		✓	✓
Dimming		✓	0-10 V dimming with GU24 base
Wireless			
High CRI Options			
Red Enhanced Options			
High Capacity Surge			
Photo Sensor Options			
Fixture Color Options			
Reflectors			
Additional Power Options		✓	✓

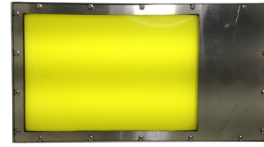
*Base fixture specifications featured
 †Higher CRI available with optional phosphor plates
 ‡Wattage dependent on number of tubes selected (1-6)



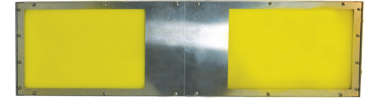
www.hornerlighting.com



BL-Series Hi-Bay Lighting



BL100



BL200

Standard Base Specifications*		BL100	BL200
Fixture Life Hours		>96,000	>96,000
Fixture Watts		118W	205W
Fixture Lumens (*est)		10,146	18,300
Lumens/Watt		85	89
CRI†		70	70
CCT		5000K	5000K
Ambient Temperature		-40°C to 45°C	-40°C to 45°C
Mounting		Cable	Cable
Power		90-305 VAC	90-305 VAC
Optional Power		24 VDC	24 VDC
IP Rating		IP54	IP54
Fixture Weight		12 lbs / 5.44 kg	19 lbs / 8.61 kg
Fixture Color		Gray	Gray
Light Distribution		115°	115°
Warranty		5 year	5 year
Optional Features			
Automation		✓	✓
Motion Control		✓	✓
Dimming		✓	✓
Wireless		✓	✓
High CRI Options		✓	✓
Red Enhanced Options			
High Capacity Surge		✓	✓
Photo Sensor Options		✓	✓
Fixture Color Options			
Reflectors			
Additional Power Options		✓	✓

*Base fixture specifications featured
 †Higher CRI available with optional phosphor plates
 ‡Wattage dependent on number of tubes selected (1-6)



www.hornerlighting.com



C-Series Hi-Bay Lighting



C80

Standard Base Specifications*	
Fixture Life Hours	>96,000
Fixture Watts	80W
Fixture Lumens (*est)	6,700
Lumens/Watt	88
CRI†	70
CCT	5000K
Ambient Temperature	-40°C to 50°C
Mounting	Surface & Pendant
Power	90-305 VAC
Optional Power	24 VDC
IP Rating	IP65 (optional)
Fixture Weight	10.0 lbs / 4.54 kg
Fixture Color	Gray
Light Distribution	115°
Warranty	5 year
Optional Features	
Automation	✓
Motion Control	✓
Dimming	✓
Wireless	
High CRI Options	✓
Red Enhanced Options	
High Capacity Surge	✓
Photo Sensor Options	✓
Fixture Color Options	✓
Reflectors	
Additional Power Options	✓

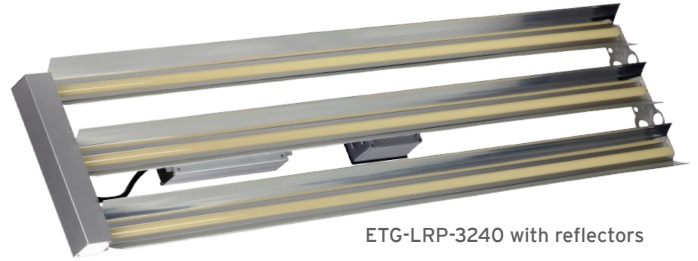
*Base fixture specifications featured
 †Higher CRI available with optional phosphor plates
 ‡Wattage dependent on number of tubes selected (1-6)



www.hornerlighting.com



4' Linear Lighting



ETG-LRP-3240 with reflectors

4' LRP - 1, 2, 3, 4, & 6 Tubes

Standard Base Specifications*	
Fixture Life Hours	>96,000
Fixture Watts	60 - 480W [†]
Fixture Lumens (*est)	5,700 - 52,800
Lumens/Watt	90 - 110
CRI [^]	80
CCT	3500 - 5000K
Ambient Temperature	-40°C to 50°C
Mounting	Cable
Power	90-305 VAC
Optional Power	480 VAC, 48 VDC, 24 VDC
IP Rating	IP50
Fixture Weight	3.5-22 lbs / 1.6-10 kg
Fixture Color	Silver
Light Distribution	220°, 52°, 44°, 33°
Warranty	5 year
Optional Features	
Automation	✓
Motion Control	✓
Dimming	✓
Wireless	✓
High CRI Options	✓
Red Enhanced Options	✓
High Capacity Surge	✓
Photo Sensor Options	✓
Fixture Color Options	
Reflectors	✓
Additional Power Options	✓

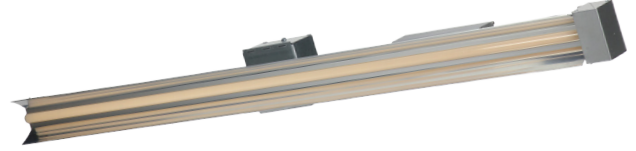
*Base fixture specifications featured
[^]Higher CRI available with optional phosphor plates
[†]Wattage dependent on number of tubes selected (1-6)



www.hornerlighting.com



8' Linear Lighting



ETG-L8RP-1080 with reflectors

8' L8RP - 1 & 2 Tubes

Standard Base Specifications*	
Fixture Life Hours	>96,000
Fixture Watts	80 - 320W [†]
Fixture Lumens (*est)	7,600 - 30,400
Lumens/Watt	90-95
CRI [^]	80
CCT	3500 - 5000K
Ambient Temperature	-40°C to 50°C
Mounting	Cable
Power	90-305 VAC
Optional Power	480 VAC, 48 VDC, 24 VDC
IP Rating	IP50
Fixture Weight	8-15 lbs / 3.6-6.8 kg
Fixture Color	Silver
Light Distribution	220°, 52°, 44°, 33°
Warranty	5 year
Optional Features	
Automation	✓
Motion Control	✓
Dimming	✓
Wireless	✓
High CRI Options	✓
Red Enhanced Options	✓
High Capacity Surge	✓
Photo Sensor Options	✓
Fixture Color Options	
Reflectors	✓
Additional Power Options	✓

*Base fixture specifications featured
[^]Higher CRI available with optional phosphor plates
[†]Wattage dependent on number of tubes selected (1-6)