

NEXT GENERATION REMOTE PHOSPHOR LED LIGHTING SOLUTIONS

THE HORNER ADVANTAGE

Horner Lighting Group Outdoor Remote Phosphor (RP) fixtures provide an innovative approach for creating increased light output and sustainable energy savings in LED lighting applications. With Remote Phosphor Technology, the phosphor is separated from the LED itself and utilized in a remote substrate or plate. White light materializes when Royal Blue LED light passes through the remote phosphor, creating one visible light source, the phosphor itself, rather than several glaring diodes.

This new advanced technology creates glare reduction, less color shift, increases efficiency, reduced heat, and lifecycle enhancement.

With proven success in a wide variety of applications, Horner Outdoor RP fixtures are ideal for:

- Parking lot and Garage
- Overhead Canopy
- Outdoor Up-Lighting
- Pathway Visibility
- Security Lighting
- Exterior Building Lighting
- Automated Lighting Systems



SECURITY LIGHTING

Horner RP Outdoor fixtures offer enhanced security in retail, commercial, and security industries. Consistent, bright lighting keeps facility users safe by increasing parking lot, outdoor space, and pathway illumination. The light fixtures can illuminate when a signal from motion sensors or cameras is received, ensuring light is present when needed. Even the most demanding of security applications, high security prisons, trust and use Horner RP outdoor fixtures.

Just one example is the award-winning, dual-head RP outdoor solution A-200, which provides a total energy savings between 54% and 81% versus traditional fixtures. The unique wing design allows for adjustment of the lighting modules for variable spread patterns, while the fixture and plates were designed to withstand acts of vandalism and damaging weather conditions. Flexible fixture options allow for up to 20,800 lumen output per 230 watt fixture.

AREA LIGHTING

With LED area lighting increasing in popularity in commercial settings, Horner Lighting Group leads the way with a variety of Remote Phosphor area lighting solutions. Traditional LED area light fixtures have a tendency to produce bright glares or visible inconsistencies where each individual diode is emitting light.

Through innovative construction, Horner RP products produce even, glare-free, consistent lighting for any application, while offering longer life, increased efficiency, and less maintenance.

Horner RP wall packs, both the WPC60 and the WP40, offer up-lighting and down-lighting that can be mounted to a variety of surfaces. The award-winning CP80 Canopy Light fits perfectly in a variety of overhead lighting applications, from parking garages to overhangs, and emits energy-efficient light where it is needed most, all while providing enough positive up-light to reduce the "cave" effect many overhead settings may have.

RETROFIT SOLUTIONS

Older, existing fixtures can also be rebuilt and retrofitted with new, more efficient, remote phosphor light engines. The transition is as easy as removing the light engine and power supply from the existing fixture and installing the R80 Retrofit light and power supply.

Replacing only the light engine from the fixture can greatly improve the quality of lighting in covered outdoor spaces, like garage lighting, and save on energy costs - all without the expense of having to add brand new fixtures. The R80 Remote Phosphor retrofit solutions offer a cost effective way to refresh older light sources, like inefficient metal halide.

LIGHTING CONTROLS

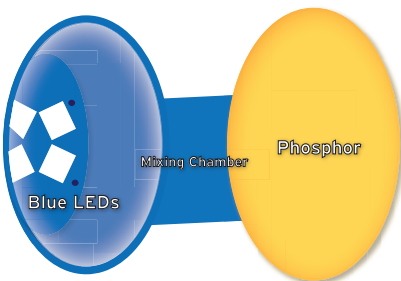
The Horner suite of control products allow for easy monitoring of all lighting functions, including dimming, motion control, occupancy, and ambient light sensing, resulting in cost savings and increased site management. Viewable on-site or from a remote location, the Horner suite is easy-to-install and easily customizable with our cost-free software platform, Cscape.

Horner OCS Controllers offer an intelligent combination of lighting management, energy usage data-logging, and a user friendly touch-screen interface. The control devices are ready to use, and can be programmed to work with any lighting needs in an all-in-one package.



WHAT IS REMOTE PHOSPHOR TECHNOLOGY?

Traditionally, white LED light is produced from a layer of phosphor adhered to on top of a royal blue LED. Over time, as heating cycles take effect, the adhesion begins to disintegrate and the phosphor layer "lifts" from the blue LED around the edges. This causes both depreciation of color and light output, as less of the light passes through the phosphor.



With Remote Phosphor technology, the phosphor is removed from the LED itself and relocated. Royal blue LEDs illuminate behind the phosphor material, causing it to emit bright white light. The phosphor density can change light output color, and LED arrangements can be specialized for red enhanced CRI. With the phosphor and LED separated, less heat is generated, and the phosphor remains at a constant, even exposure to the royal blue LEDs, generating a longer-lasting, more consistent light.





www.hornerlighting.com



C-Series Walkway & Canopy Lighting



C80



CP80

Standard Base Specifications*		C80	CP80
Fixture Life Hours		>96,000	>96,000
Fixture Watts		80W	80W
Fixture Lumens (*est)		6,700	7,500
Lumens/Watt		88	94
CRI^		70	80
CCT		5000K	5000K
Ambient Temperature		-40°C to 50°C	-40°C to 45°C
Mounting		Surface & Pendant	Ceiling
Power		90~305 VAC	90~305 VAC
Optional Power		n/a	480 VAC
IP Rating		IP65	IP54
Fixture Weight		10.0 lbs / 4.54 kg	13.6 lbs / 6.17 kg
Fixture Color		Grey	Forrest Green
Light Distribution		115°	220° Spread
Warranty		5 year	5 year
Optional Features			
Automation		✓	✓
Motion Control		✓	✓
Dimming		✓	✓
Wireless			✓
High CRI Options		✓	
Red Enhanced Options			
High Capacity Surge		✓	✓
Photo Sensor Options		✓	✓
Fixture Color Options		✓	
Additional Power Options		✓	✓

*Base fixture specifications featured
 ^Higher CRI available with optional phosphor plates



www.hornerlighting.com



WP-Series Wall Pack Lighting



WP40

WPC60

Standard Base Specifications*		WP40	WPC60
Fixture Life Hours		>96,000	>96,000
Fixture Watts		40W	60W
Fixture Lumens (est)		3,000	4,500
Lumens/Watt		75	75
CRI [^]		80	80
CCT		5000K	5000K
Ambient Temperature		-40°C to 50°C	-40°C to 50°C
Mounting		Wall / Conduit	Wall / Conduit
Power		90~305 VAC	90~305 VAC
Optional Power		480 VAC	480 VAC
IP Rating		IP65	IP65
Fixture Weight		8.2 lbs / 3.72 kg	11.1 lbs / 5.03 kg
Fixture Color		Bronze	Bronze
Light Distribution		180° Spread	270° Spread
Warranty		5 year	5 year
Optional Features			
Automation		✓	✓
Motion Control		✓	✓
Dimming		✓	✓
Wireless		✓	✓
High CRI Options		✓	✓
Red Enhanced Options			
High Capacity Surge		✓	✓
Photo Sensor Options		✓	✓
Fixture Color Options			
Additional Power Options		✓	✓

*Base fixture specifications featured
[^]Higher CRI available with optional phosphor plates



www.hornerlighting.com



A-Series Security & Area Lighting



A100A

Standard Base Specifications*	
Fixture Life Hours	>96,000
Fixture Watts	110W
Fixture Lumens (est)	10,400
Lumens/Watt	95
CRI^	70
CCT	5000K
Ambient Temperature	-40°C to 45°C
Mounting	2.5" Slip
Power	90~305 VAC
Optional Power	24 VDC
IP Rating	IP64
Fixture Weight	7.0 lbs / 3.18 kg
Fixture Color	Grey
Light Distribution	Type V
Warranty	5 year
Optional Features	
Automation	✓
Motion Control	
Dimming	✓
Wireless	✓
High CRI Options	✓
Red Enhanced Options	
High Capacity Surge	✓
Photo Sensor Options	✓
Fixture Color Options	✓
Additional Power Options	✓

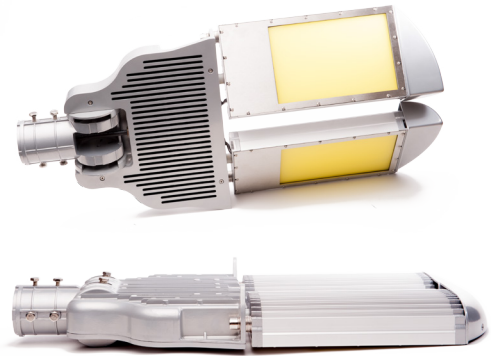
*Base fixture specifications featured
 ^Higher CRI available with optional phosphor plates



www.hornerlighting.com



A-Series Security & Area Lighting



A200

Standard Base Specifications*	
Fixture Life Hours	>96,000
Fixture Watts	230W
Fixture Lumens (*est)	20,863
Lumens/Watt	91
CRI [^]	70
CCT	5000K
Ambient Temperature	-40°C to 45°C
Mounting	2.5" Slip
Power	90~305 VAC
Optional Power	240-480 VAC
IP Rating	IP65
Fixture Weight	26.0 lbs / 11.8 kg
Fixture Color	Grey
Light Distribution	Type V
Warranty	5 year
Optional Features	
Automation	✓
Motion Control	
Dimming	✓
Wireless	✓
High CRI Options	✓
Red Enhanced Options	✓
High Capacity Surge	✓
Photo Sensor Options	✓
Fixture Color Options	✓
Additional Power Options	✓

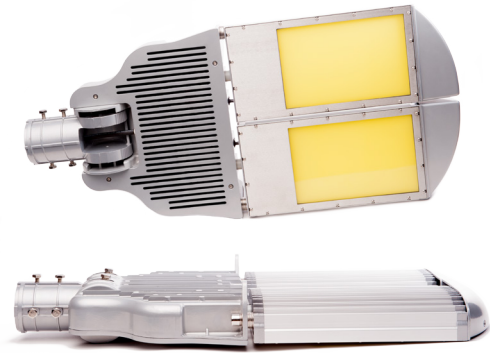
*Base fixture specifications featured
[^]Higher CRI available with optional phosphor plates



www.hornerlighting.com



A-Series Security & Area Lighting



A300

Standard Base Specifications*	
Fixture Life Hours	>96,000
Fixture Watts	320W
Fixture Lumens (est)	29,200
Lumens/Watt	91
CRI [^]	70
CCT	5000K
Ambient Temperature	-40°C to 45°C
Mounting	2.5" Slip
Power	90~305 VAC
Optional Power	480 VAC
IP Rating	IP65
Fixture Weight	30.0 lbs / 13.61 kg
Fixture Color	Grey
Light Distribution	Type V
Warranty	5 year
Optional Features	
Automation	✓
Motion Control	
Dimming	✓
Wireless	✓
High CRI Options	✓
Red Enhanced Options	✓
High Capacity Surge	✓
Photo Sensor Options	✓
Fixture Color Options	✓
Additional Power Options	✓

*Base fixture specifications featured
[^]Higher CRI available with optional phosphor plates