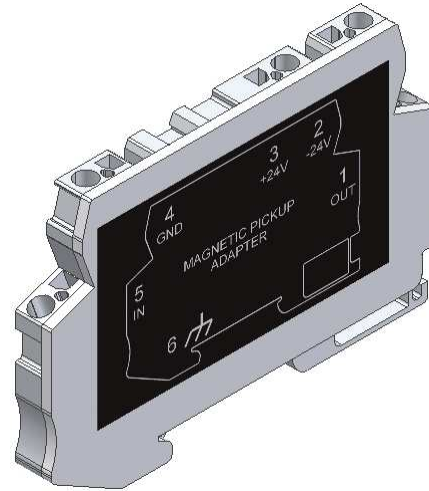




# Magnetic Pickup Adaptor HE-XMP

## 1 SPECIFICATIONS

HE-XMP Specifications	
Channels per Module	1
Commons	1
Nominal Input Voltage	0.1 to 10 V P-P
Maximum Input Voltage	12 V P-P Limited by input clamp
Nominal Input Impedance	2.2uF + 10K ohms
Nominal Frequency Range	10 Hz – 10 KHz
Isolation to PLC Common	None
DC Output Type	Universal, Sourcing/Sinking
DC Output Current Limit	45mA
Output Short Circuit Duration	Unlimited
General Specifications	
Steady State Power, Inputs ON, Unit connected to PLC,	10 mA @ 24 VDC
Peak Supply Current	60mA Max. (Sourcing short circuit)
Operating Power Range	10 – 30 VDC
Safe Applied Power Range	-0.3 to +33 VDC
Relative Humidity	5 to 95% Non-condensing
Operating Temperature	0° to 50° Celsius
Terminal Type	Built-in Spring Clamp
Weight	32 g
CE	See Compliance Table at
UL	<a href="http://www.heapg.com/Support/compliance.htm">http://www.heapg.com/Support/compliance.htm</a>



## 2 SAFETY



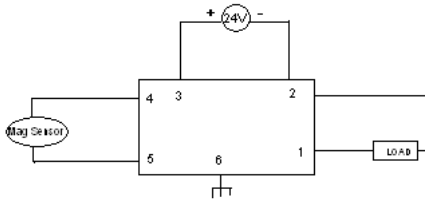
**Warning:** Electrical Shock Hazard.



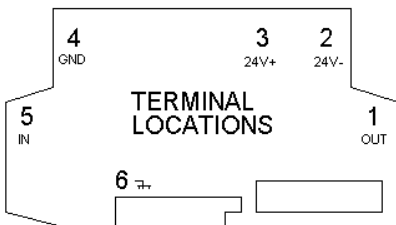
**Warning:** Consult user documentation.

When found on the product, the following symbols specify:

CONNECTOR WIRING	
See outline diagram	
PIN	DESCRIPTION
1	Logic Output to PLC HSC Input
2	PLC and Power Common
3	24 VDC Power Input
4	Magnetic Pickup Common (Connected to PLC Common)
5	Magnetic Pickup Input
6	DIN Rail Contact (Isolated from Pickup/PLC Common)



Circuit Diagram



Outline Diagram

**WARNING:** To avoid the risk of electric shock or burns, always connect the safety (or earth) ground before making any other connections.  
**WARNING:** To reduce the risk of fire, electrical shock, or physical injury it is strongly recommended to fuse the voltage measurement inputs. Be sure to locate fuses as close to the source as possible.  
**WARNING:** Replace fuse with the same type and rating to provide protection against risk of fire and shock hazards.  
**WARNING:** In the event of repeated failure, do not replace the fuse again as a repeated failure indicates a defective condition that will not clear by replacing the fuse.  
**WARNING:** Only qualified electrical personnel familiar with the construction and operation of this equipment and the hazards involved should install, adjust, operate, or service this equipment. Read and understand this manual and other applicable manuals in their entirety before proceeding. Failure to observe this precaution could result in severe bodily injury or loss of life.

## 3 TECHNICAL SUPPORT

For assistance and manual updates, contact Technical Support at the following locations:

### North America:

Tel: 317 916-4274

Fax: 317 639-4279

Web: <http://www.heapg.com>

Email: [techspt@heapg.com](mailto:techspt@heapg.com)

### Europe:

Tel: +353-21-4321266

Fax: +353-21-4321826

Web: <http://www.horner-apg.com>

Email: [tech.support@horner-apg.com](mailto:tech.support@horner-apg.com)

- All applicable codes and standards need to be followed in the installation of this product.
- Adhere to the following safety precautions whenever any type of connection is made to the module:
  - Connect the safety (earth) ground on the power connector first before making any other connections.
  - When connecting to electric circuits or pulse-initiating equipment, open their related breakers.
  - Do not make connections to live power lines.
  - Make connections to the module first; then connect to the circuit to be monitored.
  - Route power wires in a safe manner in accordance with good practice and local codes.
  - Wear proper personal protective equipment including safety glasses and insulated gloves when making connections to power circuits.
  - Ensure hands, shoes, and floor are dry before making any connection to a power line.
  - Make sure the unit is turned OFF before making connection to terminals.
  - Make sure all circuits are de-energized before making connections.
  - Before each use, inspect all cables for breaks or cracks in the insulation. Replace immediately if defective.

No part of this publication may be reproduced without the prior agreement and written permission of Horner APG, Inc. Information in this document is subject to change without notice.