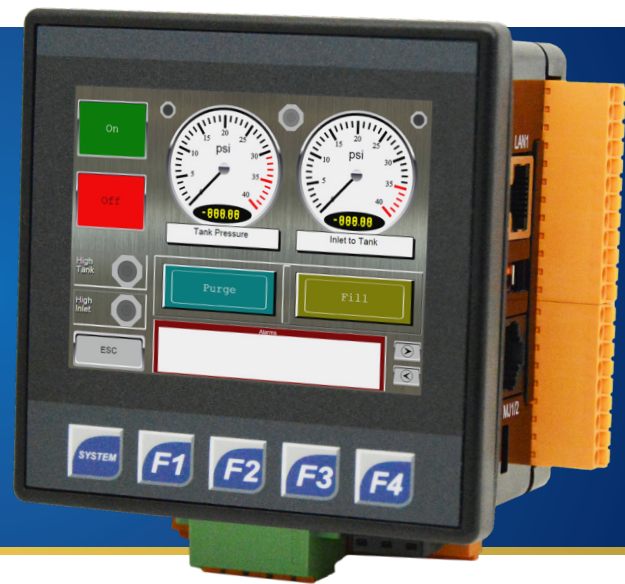


XL4 OCS

The World's Most Advanced 1/4 DIN All-In-One Controller

A milestone product setting the standard for functionality and performance.



BENEFITS

- High performance logic controller with online programming
- 3.5" QVGA color touchscreen for detailed graphics
- Built-in digital and analog I/O with (2) 500kHz high-speed counters
- 10/100 Ethernet for e-mail, web serving, FTP and Modbus/TCP
- USB 2.0 ports for programming and FLASH drive support
- 32GB microSD slot for application updates and virtually unlimited data logging



3.5" COLOR TOUCHSCREEN

The XL4 shares the same 1/4 DIN form factor as our extremely popular XLE and XLT. The XL4 LCD TFT Display is full color with QVGA resolution and provides virtually instantaneous updates. Sunlight readable transfective and low-temperature versions are optional.

FULL ETHERNET BUILT INTO EVERY UNIT

The XL4 model has built-in 100Mbps Ethernet. The XL4 Ethernet support includes an integrated Web Server, FTP Host, email, Modbus/TCP Master/Slave, Programming and much more.

ONLINE PROGRAMMING & HIGH-SPEED USB 2.0

The XL4 includes two USB 2.0 ports; Host port and an on-the-go port. The Host Port allows connection of removable FLASH drives, supporting drives up to 2TB. XL4 Online Programming allows the logic program to be modified on-the-fly without entering stop mode.

ADVANCED HIGH SPEED COUNTER (>500KHZ)

The 2-channel High Speed Counter accepts frequencies exceeding 500kHz, supporting a variety of modes including Totalizing, Quadrature, Pulse Measurement, Frequency Counting and Setpoint Controlled Outputs.

WEBOCS COMPATIBILITY

With Horner WebMI, you can monitor and control plant data from the palm of your hand. Published directly from the OCS Controller, WebMI allows the same or unique Web pages to be monitored and controlled from your computer, tablet or other connected device. Developed completely within our Cscape environment, WebMI allows for state-of-the-art HTML5 development without the need for web programming skills. The licensing and registration process is quick and simple while the benefits and affordability of WebMI will truly change your world.

EASY TO CONFIGURE DATA LOGGER

All of our OCS products can quickly and easily be configured for data logging. It only takes a few steps within Cscape to set up the data and frequency with which data can be logged to the on-board microSD card. Utilizing the data is just as simple - email, text, or even allow files to be transferred (.csv) via FTP.

XL4 with -106 I/O Option Board shown above

SPECIFICATIONS AND TECHNICAL INFORMATION



PHYSICAL CHARACTERISTICS

- 1 Touchscreen
- 2 Function Keys
- 3 High Capacity MicroSD Slot
- 4 Configuration Switches
- 5 USB Mini-B Port
- 6 Wide-Range DC Power
- 7 CAN Port
- 8 Ethernet LAN Port
- 9 USB A Port
- 10 RS232/RS485 Serial Port

CONTROLLER	
CPU	Single Core Arm
Logic Scan Rate	0.04 ms/kB
Built-In Storage	128MB
Removable Memory	microSD
Retentive Storage	256kB
Programming Languages	Advanced Ladder or Full IEC 1131-3 languages
USER INTERFACE	
Display Technology	3.5" TFT Transmissive Color (640 nits)
Resolution / Color	QVGA 320x240 • 16-bit (65,535)
Keypad	5 function keys
CONNECTIVITY	
Serial Ports	1 with RS-232 and RS-485 on single Modular Jack
USB Ports (A and Mini-B)	USB 2.0 (480MHz) Programming & Data Access
Ethernet	10/100Mb (Auto MDX) Modbus TCP C/S, HTTP, FTP, SMTP, Cscape
CAN	Remote I/O, Peer-to-Peer Comms, Cscape

I/O MODELS	
HE-XC1E0	No Built-in I/O
HE-XC1E2	12 DC in, 6 Relay Out, 4 - 12-bit Analog In
HE-XC1E3	12 DC in, 12 DC Out, 2 - 12-bit Analog In
HE-XC1E4	24 DC in, 16 DC Out, 2 - 12-bit Analog In
HE-XC1E5	12 DC in, 12 DC Out, 2 - 14/16-bit Analog In (mA/V/Tc/mV/RTD), 2 - 12-bit Analog Out
HE-XC1E6	12 DC in, 12 DC Out, 6 - 14/17-bit Analog In (mA/V/Tc/mV/RTD), 4 - 12-bit Analog Out
Remote I/O	All Models Support SmartRail, SmartBlock, SmartStix, SmartMod, various 3rd party I/O devices
OPERATING SPECS. & STANDARDS	
Primary Power Range	10-30VDC
Operating Temperature	-10° to 60°C
Humidity (non-condensing)	5 to 95%
Ratings	IP65, UL Type 3R, 4, 4x, 12, 12k, 13, ABS
PHYSICAL SPECIFICATIONS	
Dimensions (W x H x D)	mm: 96 x 96 x 57.5 in: 3.78 x 3.78 x 2.26
Weight	2 lbs or 907g