

THE INDUSTRY LEADER IN ALL-IN-ONE CONTROLS



GLOBAL HEADQUARTERS

59 S. State Ave.
Indianapolis, Indiana 46201
P 317-916-4274
F 317-639-4279
TF 877-665-5666
www.hornerautomation.com
sales@heapg.com

INTERNATIONAL OPERATIONS

HORNER EUROPE /

MIDDLE EAST / AFRICA

Horner Ireland Limited, Unit 1
Centrepark, Centrepark Road
Cork, Ireland
P +353-21-4321266
F +353-21-4321826
info@horner-apg.com
www.hornerautomation.eu

HORNER INDIA

Vaishnavi, No. 3, Domlur 2nd Stage
3rd Phase, Domlur Main Rd.
Bangalore 560071
Karnataka, India
P +91-80-41263460 / 61 / 62
F +91-80-41263464
info@hornerautomation.in

HORNER AUSTRALIA

Unit 15
104 Ferntree Gully Road
Oakleigh Victoria 3166
P 03 9544 0733
F 03 9544 0977
sales@networkautomation.com.au

HORNER CANADA

916 42 Avenue SE #120
Calgary, Alberta T2G 1Z2
P (403) 444-0928
F (403) 265-0966
info@hornercanada.com
www.hornerautomation.com



INDUSTRY LEADING ALL-IN-ONE CONTROLLER

The XL series provides the best all-in-one, affordable control solution for OEMs, integrators and end-users by combining a robust, reliable control product with an operator interface, I/O and networking into a single compact unit. The XL series is designed to provide ease of use, cost savings and flexibility for all operations, no matter the application.

With proven success across a wide variety of applications, the XL series is ideal for:

- Custom OEM products
- Power management & back-up generation
- Semiconductor applications
- Packaging machinery
- Water treatment
- Compressor control
- Pump control
- Food processing
- Motion control
- Distributed conveyor control
- HVAC/Environmental control
- Mobile machinery
- Automotive parts manufacturing

POWERFUL, SECURE CSCAPE PROGRAMMING SOFTWARE

The XL series (developed using a single, industry-recognized software platform, Cscape) combines graphical ladder logic programming, operator interface development, I/O configuration and network configuration. The user-friendly interface provides free form and drag & drop editor, as well as more than 100 functions to choose from. In addition to the Cscape Advanced Ladder offering, Cscape also supports the IEC 1131 programming languages.

From the Horner website, hornerautomation.com, download the Cscape software or software updates at no charge. This free service allows you to avoid costly licensing fees while always having the most up-to-date software version.

LOWER COSTS, MORE OPTIONS, EASY-TO-USE

With fully integrated hardware and software, both the RCC and XL series offer easier programming, installation, development and set-up. Our controllers have a small footprint and can easily retrofit into an existing system with little effort. Neither the XL nor the RCC products are limited to their on-board I/O. Many variations of distributed remote I/O, including SmartBlock, SmartStix, and SmartMod can be connected via CsCAN, Ethernet, or Modbus. RTU/Modbus based SmartMod I/O is also a cost-effective means of adding a small amount of analog I/O.

The XL series is the first industrial product to utilize microSD™ Data Storage Memory, ideal for data logging, machine recipes, and application files.

CONNECTIVITY

The XL series is designed as a modular system for easy selection and growth; CsCAN (CAN Based) high speed networking and Modbus RTU networking capabilities are standard in both series controllers. Ethernet is standard in the XL series of controllers, and available as an optional component in all other models. Remote I/O options offer high performance, accurate analog, and easy-to-configure digital only modules. Horner I/O has flexible communication options that easily expand current systems.

CUSTOMIZED FOR SPECIFIC OEM NEEDS

The XL series is a white-label product: operator stations that other companies can rebrand. Also, they fit in most cabinets, console designs, and color schemes. A customized overlay can be added to match the language, logo, and industry terms. This gives the flexibility to use the XL series in any application.



BUILT-IN DIGITAL & ANALOG I/O

	DC In	DC Out (+)	Relay Out	HSC In	Pulse Out	mA/V In	mA/V RTD/TC (Universal)	mA/V Out
Model 2	12		6	4		4		
Model 3	12	12		4	2	2		
Model 4	24	16		4	2	2		
Model 5	12	12		4	2		2	2
Model 6	12	12		4	2		6	4

*shared with total DC inputs
**shared with total DC outputs

XL SERIES PART NUMBERS

Model	No I/O	Model 2	Model 3	Model 4	Model 5	Model 6
XLEe	HE-XE1E0	HE-XE1E2	HE-XE1E3	HE-XE1E4	HE-XE1E5	HE-XE1E6
XLTe	HE-XT1E0	HE-XT1E2	HE-XT1E3	HE-XT1E4	HE-XT1E5	HE-XT1E6
XL4	HE-XC1E0	HE-XC1E2	HE-XC1E3	HE-XC1E4	HE-XC1E5	HE-XC1E6
EXL6	HE-EXL1E0	HE-EXL1E2	HE-EXL1E3	HE-EXL1E4	HE-EXL1E5	HE-EXL1E6
EXLW	HE-EXLWE0	HE-EXLWE2	HE-EXLWE3	HE-EXLWE4	HE-EXLWE5	HE-EXLWE6
XL7	HE-XW1E0	HE-XW1E2	HE-XW1E3	HE-XW1E4	HE-XW1E5	HE-XW1E6
EXL10	HE-EXV1E0	HE-EXV1E2	HE-EXV1E3	HE-EXV1E4	HE-EXV1E5	HE-EXV1E6
XL15+	HE-XP7E0	HE-XP7E2	HE-XP7E3	HE-XP7E4	HE-XP7E5	HE-XP7E6

XL SERIES COM OPTIONS

HE-XDAC007	2-channel Analog Out (mA/V)
HE-XDAC107	4-channel Analog Out (mA/V)
HE-XHSQ	24V Dual High Speed Output
HE-XHSQ-5	5V Dual High Speed Output
HE-XEC	Add-on Ethernet
HE-XPBS	Profibus DP Slave
HE-XRC9	900MHz I W Radio Modem
HE-XMC	14.4 K Telephone Modem
HE-XRC*	GSM/GPRS Cellular Modem

not all options available across all models
*additional suffixes define technology, GPS support, and antenna; contact factory for more info
**external unit

WebMI - TAKE (REMOTE) CONTROL

With Horner WebMI, you can monitor and control plant data from the palm of your hand. Published directly from the OCS Controller, WebMI allows the same or unique Web pages to be monitored and controlled from your computer, tablet or other mobile device, supporting all of our controllers. Developed completely within our Cscape environment, WebMI allows for state-of-the-art HTML5 development without the need for web programming skills. The licensing and registration process is quick and simple while the benefits and affordability of WebMI will truly change your world.



Cscape Configurability

Implement your OCS application remotely without any manual HTML development.



Level-Based, Object Security

From graphic objects to application commands - you control who can do what.



IOT - Internet of Things

Instantly connect to your automated applications to grow and improve business.



HTML5

Instantly deliver almost everything you want to accomplish online to your web browser.



Scalable Vector Graphics (SVG)

Sharp, clear, and professional screens regardless of the device you use, any size.

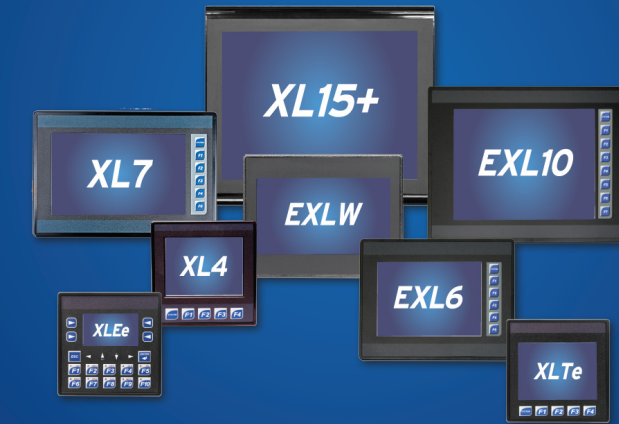


Licensing Capabilities

On or off-line licensing packages that will work within your organizational scope.



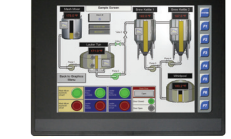
XL & RCC SERIES OCS



ALL-IN-ONE INTELLIGENT AND POWERFUL CONTROLS

XL SERIES

RCC SERIES



FEATURES	
Controller	Ladder Logic Memory
	Logic Scan Rate
	Removable Memory
	Local Comment Storage
	Floating Point Support
	AutoTune PID Capable
Operator Interface	Motion Commands (CANOpen)
	Characters/Pixels
	Display Technology
	Character Height
	Number of Pages
	Fields or Objects per Page
I/O	Total Keys
	Function Keys
	OEM Faceplate Available
	Built-in I/O points
	Add on - SmartStix, SmartRail, SmartBlock, SmartMod
	Digital Inputs/Outputs, Max
Ethernet/Internet	Analog Inputs/Outputs, Max
	General Purpose Registers (words)*
	General Purpose Internal Coils (bits)
	Ethernet Support
Serial Communications	Remote Access
	Remote File Access
	WebMI Compatibility (Licensed Option)
	Serial Ports
Networking	RS-232 Ports/RS-485 Ports
	PLC/Drive Protocols
	RTU/Modbus Master/Slave/Serial ASCII In/Out
	USB Ports (A and Mini-B)
Physical Specifications	Integrated CsCAN Network
	Maximum CsCAN Distance**
	Programming Over Network
	Peer-to-Peer Messaging
Operating Specifications & Standards	Height (inches/mm)
	Width (inches/mm)
	Depth (inches/mm)
	I/O Module Depth
	Operating Temperature
	Humidity (non-condensing)
	Product Certifications/Approvals
Environmental Rating	

XL Ee
256 KB
0.7 mS/K
up to 32 GB microSD
Yes
Yes
Yes
Yes
Yes
128 x 64
Transflective LCD
Selectable Fonts
1023
50
20
10
Yes
22 - 44
CsCAN & Ethernet
2048 / 2048
512 / 512
9999
4096 (2048 retentive)
Yes
EnvisionRV
EnvisionFX
Yes
2
RS-232 / RS-485 (x2)
Yes
Yes
Programming Only
Standard
1640 ft.
Yes
Yes
3.78" / 96.0 mm
3.78" / 96.0 mm
2.26" / 57.5 mm
COM option adds 0.5"/13 mm depth
-10 to 60°C
5 to 95%
UL Class 1 Div II, CE
UL Type 1, 3R, 4, 4x, 12, 12k, 13, ABS

XL Te
256 KB
0.8 mS/K
up to 32 GB microSD
Yes
Yes
Yes
Yes
Yes
160 x 128
Transflective LCD
Selectable Fonts
1023
50
5
4
Yes
22 - 44
CsCAN & Ethernet
2048 / 2048
512 / 512
9999
4096 (2048 retentive)
Yes
EnvisionRV
EnvisionFX
Yes
2
RS-232 / RS-485 (x2)
Yes
Yes
Programming Only
Standard
1640 ft.
Yes
Yes
3.78" / 96.0 mm
3.78" / 96.0 mm
2.26" / 57.5 mm
COM option adds 0.5"/13 mm depth
-10 to 60°C
5 to 95%
UL Class 1 Div II, CE
UL Type 1, 3R, 4, 4x, 12, 12k, 13, ABS

XL 4
2 MB
0.04 mS/K
up to 32 GB microSD
Yes
Yes
Yes
Yes
Yes
320 x 240 (QVGA)
3.5" TFT Color
Selectable Fonts
1023
1023
5
4
Yes
22 - 44
CsCAN & Ethernet
2048 / 2048
512 / 512
49999
32768 (16384 ret.)
Standard
HTTP or EnvisionRV
FTP or EnvisionFX
Yes
2
RS-232 & RS-485 (1 of each)
Yes
Yes
Yes
Standard
1640 ft.
Yes
Yes
3.78" / 96.0 mm
3.78" / 96.0 mm
2.26" / 57.5 mm
COM option adds 0.5"/13 mm depth
-10 to 60°C
5 to 95%
UL Class 1 Div II, CE
UL Type 1, 3R, 4, 4x, 12, 12k, 13, ABS

EXL 6
2 MB
0.04 mS/K
up to 32 GB microSD
Yes
Yes
Yes
Yes
Yes
640 x 480
5.7" TFT Color
Selectable Fonts
1023
1023
6
5
Yes
22 - 44
CsCAN & Ethernet
2048 / 2048
512 / 512
49999
32768 (16384 ret.)
Standard
HTTP or EnvisionRV
FTP or EnvisionFX
Yes
3
RS-232 &/or RS485
Yes
Yes
Yes
Standard
1640 ft.
Yes
Yes
5.66" / 143.8 mm
7.34" / 186.08 mm
1.84" / 46.62 mm
COM opt adds 0.9"/22mm depth
-10 to 60°C
5 to 95%
UL Class 1 Div II, CE
UL Type: 1, 3R, 4, 4x, 12, 12k, 13

EXL W
2 MB
0.04 mS/K
up to 32 GB microSD
Yes
Yes
Yes
Yes
Yes
800 x 480
7" TFT Color
Selectable Fonts
1023
1023
6
5 (on screen)
Yes
22 - 44
CsCAN & Ethernet
2048 / 2048
512 / 512
49999
32768 (16384 ret.)
Standard
HTTP or EnvisionRV
FTP or EnvisionFX
Yes
3
RS-232 &/or RS485
Yes
Yes
Yes
Standard
1640 ft.
Yes
Yes
5.66" / 143.8 mm
7.34" / 186.08 mm
1.84" / 46.62 mm
COM opt adds 0.9"/22mm depth
-10 to 60°C
5 to 95%
UL Class 1 Div II, CE
UL Type: 1, 3R, 4, 4x, 12, 12k, 13

XL 7
2 MB
0.04 mS/K
up to 32 GB microSD
Yes
Yes
Yes
Yes
Yes
800 x 480
7" TFT Color
Selectable Fonts
1023
1023
6
5
Yes
22 - 44
CsCAN & Ethernet
2048 / 2048
512 / 512
49999
32768 (16384 ret.)
Standard, 2 Ports
HTTP or EnvisionRV
FTP or EnvisionFX
Yes
3
RS-232 &/or RS485
Yes
Yes
Yes
Standard, 2 Ports
1640 ft.
Yes
Yes
5.66" / 143.8 mm
8.27" / 210.1 mm
2.72" / 69.1 mm
COM opt adds 0.9"/22mm depth
-10 to 60°C
5 to 95%
UL Class 1 Div II, CE
UL: 1, 3R, 4, 4x, 12, 12k, 13, ABS

EXL 10
2 MB
0.04 mS/K
up to 32 GB microSD
Yes
Yes
Yes
Yes
Yes
640 x 480 (VGA)
10.4" TFT Color
Selectable Fonts
1023
1023
8
7
Yes ^{††}
22 - 44
CsCAN & Ethernet
2048 / 2048
512 / 512
49999
32768 (16384 retentive)
Standard, 2 Ports
HTTP or EnvisionRV
FTP or EnvisionFX
Yes
3
RS-232 &/or RS485
Yes
Yes
Yes
Standard, 2 Ports
1640 ft.
Yes
Yes
9.08" / 230.6 mm
11.94" / 303.3 mm
2.43" / 61.7 mm
COM option adds 0.5" / 13 mm depth
-10 to 60°C
5 to 95%
UL Class 1 Div II, CE
UL Type 1, 3R, 4, 4x, 12, 12k, 13

XL 15+
2 MB
0.006 mS/K
up to 32 GB microSD
Yes
Yes
Yes
Yes
Yes
1024 x 768 (XGA)
15" TFT Color
Selectable Fonts
1023
1023
8 (on screen)
7 (on screen)
No
22 - 44
CsCAN & Ethernet
2048 / 2048
512 / 512
4096
32768 (16384 retentive)
Standard, 2 Ports
HTTP or EnvisionRV
FTP or EnvisionFX
Yes
3
RS-232 & RS-485; RS-232 / RS-485
Yes
Yes
Yes
Standard, 2 Ports
1640 ft.
Yes
Yes
12.60" / 320.0 mm
14.57" / 370.08mm
4.08" / 103.6 mm
COM option adds 0.5" / 13 mm depth
-10 to 60°C
5 to 95%
UL Class 1 Div II, CE
UL Type 1, 3R, 4, 4x, 12, 12k, 13, ABS

RCC 972
128KB
0.04 mS/K
up to 32 GB microSD
Yes
Yes
Yes
Yes
Yes
Real Time Clock No
DC In 12/24 VAC 8
DC Out 24 VDC 4
Analog In 0-20mA 8
Analog Out 0-20mA 4
24
CsCAN & Ethernet
2048 / 2048
512 / 512
4096
2048 (1024 retentive)
Standard
HTTP or EnvisionRV
FTP or EnvisionFX
Yes
1
RS-232
Yes
Yes
No
Standard
1640 ft.
Yes
Yes
4.37" / 111.0 mm
4.57" / 116.0 mm
1.41" / 35.8 mm
N/A
-10 to 60°C
5 to 95%
UL Class 1 Div II, CE
IP20

RCC 1410
2MB
0.04 mS/K
up to 32 GB microSD
Yes
Yes
Yes
Yes
Yes
Real Time Clock Yes
DC In 12/24 VAC 14
DC Out 24 VDC 10
Analog In 0-20mA --
Analog Out 0-20mA --
24
CsCAN & Ethernet
2048 / 2048
512 / 512
49999
32768 (16384 retentive)
Standard
HTTP or EnvisionRV
FTP or EnvisionFX
Yes
2
RS-232 & RS-485
Yes
Yes
No
Standard
1640 ft.
Yes
Yes
4.37" / 111.0 mm
4.57" / 116.0 mm
1.41" / 35.8 mm
N/A
-10 to 60°C
5 to 95%
UL Class 1 Div II, CE
IP20

*Actual retentive register count may vary from model to model, please contact factory for more details
**Please refer to CsCAN Installation Manual

†† To be ordered by Horner, includes keypad