

# Longwatch™ View Station



- Create any number of views
- Point & click access to video from any camera
- Simultaneous support of multiple camera models and codecs
- Build locked down consoles with limited menus
- User-defined button panels

## Configurable operator consoles for Longwatch Video System

The View Station presents a full featured operator interface to a network of video cameras managed by the IVC Longwatch Video System. Operators are provided camera access and control, regardless of location or size of the video network. A client of the Longwatch VCC, View Station provides a scalable

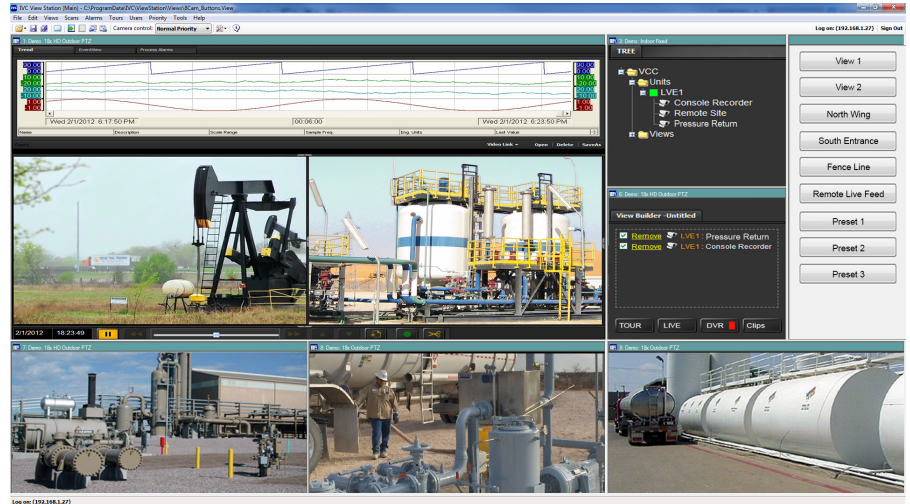
architecture that delivers robust performance for systems of any size. The format and content of a View Station display is completely configurable and can include video from multiple VCCs and LVEs. Any number of views can be defined and subsequently displayed based on application requirements.

# Create Any View You Need

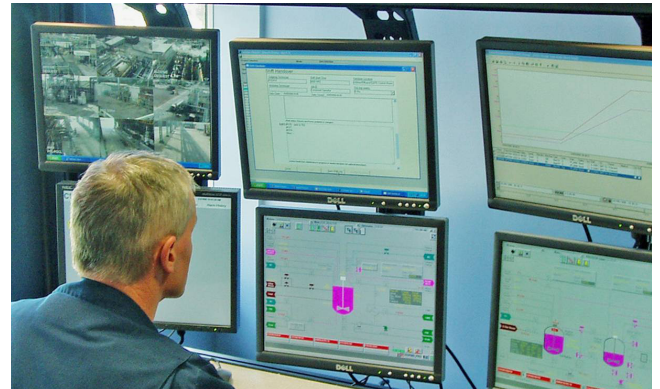
The format and content of a View Station display is fully configurable. Multiple views can be defined and subsequently displayed based on system conditions or user requirements. A view may include any mix of the available screen elements and functions.

## Available Screen Elements:

- Live video
- Configurable button controls
- Browser windows
- Camera lists
- Longwatch Viewer control

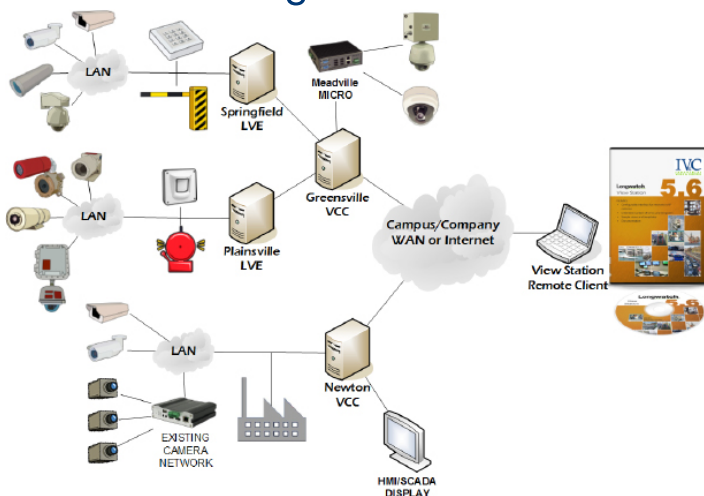


Multi-monitor views

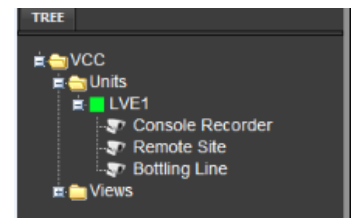


Kiosk/touch-screen operator consoles

## Camera Management



The View Station puts no limitations on how you manage your camera network. Regardless of the size of your video network, you decide which cameras to manage with a given View Station. Group cameras any way appropriate - by function, by type, by location, etc.



*Group cameras by function, type, location, etc.*

# Multi-Monitor Support

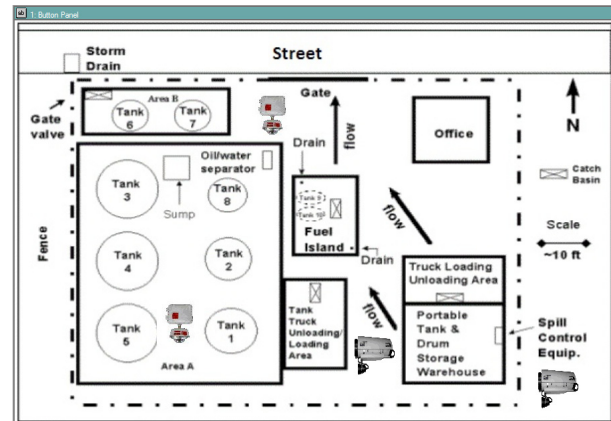
The Longwatch View Station supports multiple monitor operator stations. This feature facilitates the creation of video walls to enhance the management of large video networks. Each view may be configured to display on a specific monitor when it is activated, so that you ensure the operator's attention is focused on the proper area.



# Operator-Initiated Operations

The View Station software provides the ability for the user to create one or more button panels within a view. Standard buttons or any graphic can be dynamically positioned on a background image of your choice. The panels could include buttons to:

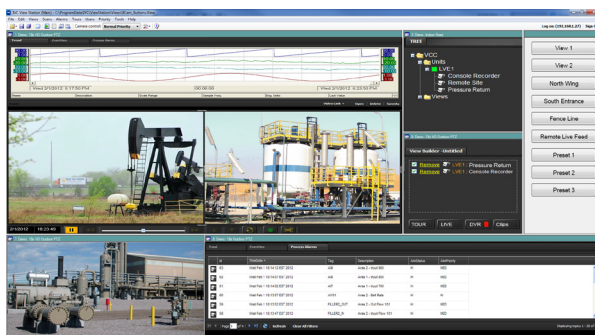
- Issue commands to other devices or software on the network
- Move camera to a preset position
- Start or stop video recording
- Control camera scans
- Open new view
- Assign camera to live video window



A video surveillance system designer may add as many button panels and buttons as are necessary to provide the automation needed.

# Longwatch Viewer Control

A fully functional Longwatch Viewer may be configured into any View Station view. This allows you to include Longwatch Video Historian features such as video clip playback and historical SCADA data correlation in a View Station view.



*View historical SCADA data*

*Replay saved video clips*

# Camera Scans

In larger video systems, there will almost always be more cameras than available live video windows in a specific view. You may program any view to scan through the configured camera list, so that live video from each camera is displayed on available live video windows. The cameras viewed, the live video windows used, and the time interval selected camera's video is displayed is completely programmable. Buttons and menu items are available so operators may control the scan as needed.



## ▶ system requirements

Minimum System Requirements	Video Control Center (VCC)	Longwatch Video Engine (LVE and CRE) Max 4 per server	Client (LWViewer)
<b>Minimum Hardware Requirements</b>			
<b>CPU</b>	iCore 7 or Server class Xeon - Minimum of 2 cores	iCore 7 or Server class Xeon - Minimum of 2-4 cores for 1-2 engines, 4-8 cores for 3-4 engines	iCore 7 or equivalent
<b>Available Hard Disk Space</b>	50 - 100 GB depending on # of event clips	For LVE - ~12 GB/day/camera for medium resolution/frame rate For CRE - ~1-2 GB/day/console	N/A
<b>Available Memory</b>	2 GB	2 GB per engine	2 GB or more
<b>Networking</b>	1 Gb	1 Gb	1 Gb
<b>Software Components Required</b>			
<b>Operating System</b>	Windows 7 / 8.1 Windows Server 2008 R2 / 2012 R2	Windows 7 / 8.1 Windows Server 2008 R2 / 2012 R2	Windows 7 / 8.1
<b>For Windows 2008 and 2012 R2 Server</b>	Desktop Experience Feature .Net 3.51 Feature	Desktop Experience Feature	N/A
<b>Internet Explorer</b>	Version 8 or above	Version 8 or above	Version 8 or above
<b>Acrobat Viewer</b>	Version 5.0 or later	N/A	Version 5.0 or later
<b>Microsoft Media Player</b>	Version 9 or later (supplied with Desktop Experience)	Version 9 or later (supplied with Desktop Experience)	Version 9 or later (supplied with Desktop Experience)
<b>Note</b> - for smaller systems the VCC and LVE can reside on the same hardware. Size accordingly. <b>Note</b> - SQL Server 2008 R2 Express is installed as part of the VCC install			

## ▶ ordering information

View Station Software includes all the tools necessary to create views, camera scans, and user-defined buttons. The software is licensed based on the number of video engines that can be simultaneously connected from one or more VCC's.

To simplify your installation, IVC offers computers pre-configured with the appropriate View Station Software. Ask your IVC representative about this option.

Part Number	Description
<b>LW-VSS-01</b>	Longwatch View Station workstation license (one required for each workstation)
<b>LW-VSS-VE-LIC</b>	Longwatch View Station video engine license (one required for each connected video engine; at least one license is required)



**MADE IN THE USA**

330 Nevada St., Newton, MA 02460 [www.ivcco.com](http://www.ivcco.com) 617-467-3059

© 2015, Industrial Video & Control Co. The Industrial Video & Control Co. logo is a registered trademark of Industrial Video & Control Co.. All other company names and products are trademarks or registered trademarks of their respective companies. All information provided is subject to change without notice. 9/24/2015

**IVC**  
INDUSTRIAL  
VIDEO & CONTROL