

## RMI5010



The powerful RMI5010 is an HMI controller without display. Connect directly to the RMI5090 9.7" display or use a wireless router to communicate with an Apple iPad or Android tablet/smart phone.

### Smart Device Compatible HMI

- Access system control via computer, iPad, or Android tablet/smart phone
- 256MB Flash memory, 256MB RAM
- 32-bit RISC CPU, 600MHz
- 2 Ethernet ports
- 3 serial ports
- USB host port
- SD card slot
- Built-in RTC
- 35mm DIN rail mount
- Isolated power supply
- Use in conjunction with optional RMI5090

The Maple Systems RMI5010 is a compact, robust HMI that allows you to use an Apple iPad, Android tablet, or Android smart phone to access your industrial control system. Check for status updates and alarm conditions from anywhere in the plant with ease.

Compact and versatile, the RMI5010 can:

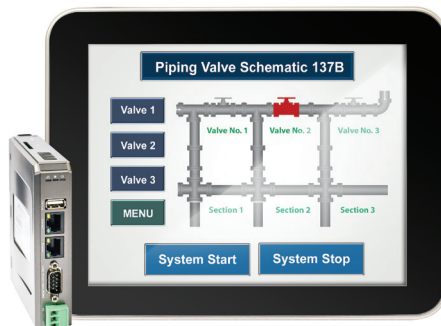
- Communicate with up to 3 display devices at one time, in any combination of an Apple iPad, Android tablet/phone, or the optional RMI5090
- Use a Wi-Fi router to connect to tablet and/or smart phone devices
- Connect to and use the optional hardwired RMI5090 as a local mounted display

Configuration is easy—simply connect

to your computer using EZwarePlus configuration software. Download your project, install the free cMT Viewer app, locate the RMI5010 and connect.

Combined with EZwarePlus, the RMI5010 offers a wide range of features including alarm management, email support, batch recipes, data logging, enhanced security, and more.

Lightweight and compact, mount the RMI5010 to a DIN rail to share space with your PLC. Ethernet connectivity and three serial ports support compatibility with most PLCs. The RMI5010 is an excellent solution to help you meet your control needs.



Every Machine  
Needs the  
Human Touch



[www.maplesystems.com](http://www.maplesystems.com)

# RMI5010 Specifications

Hardware	
CPU Type	ARM Cortex A8 600 MHz
Memory	256MB Flash, 256MB DRAM
SD Card Slot	SD/SDHC
Ethernet Port	10/100/1000M x 2
Serial Ports	Com1: RS-232 Com2: RS-485, 2 or 4 wire Com3: RS-485, 2 wire
Audio	N/A
USB Ports	1 host 2.0 port
RTC	Built-in (CR1225 3V lithium battery)
HDMI Port	N/A

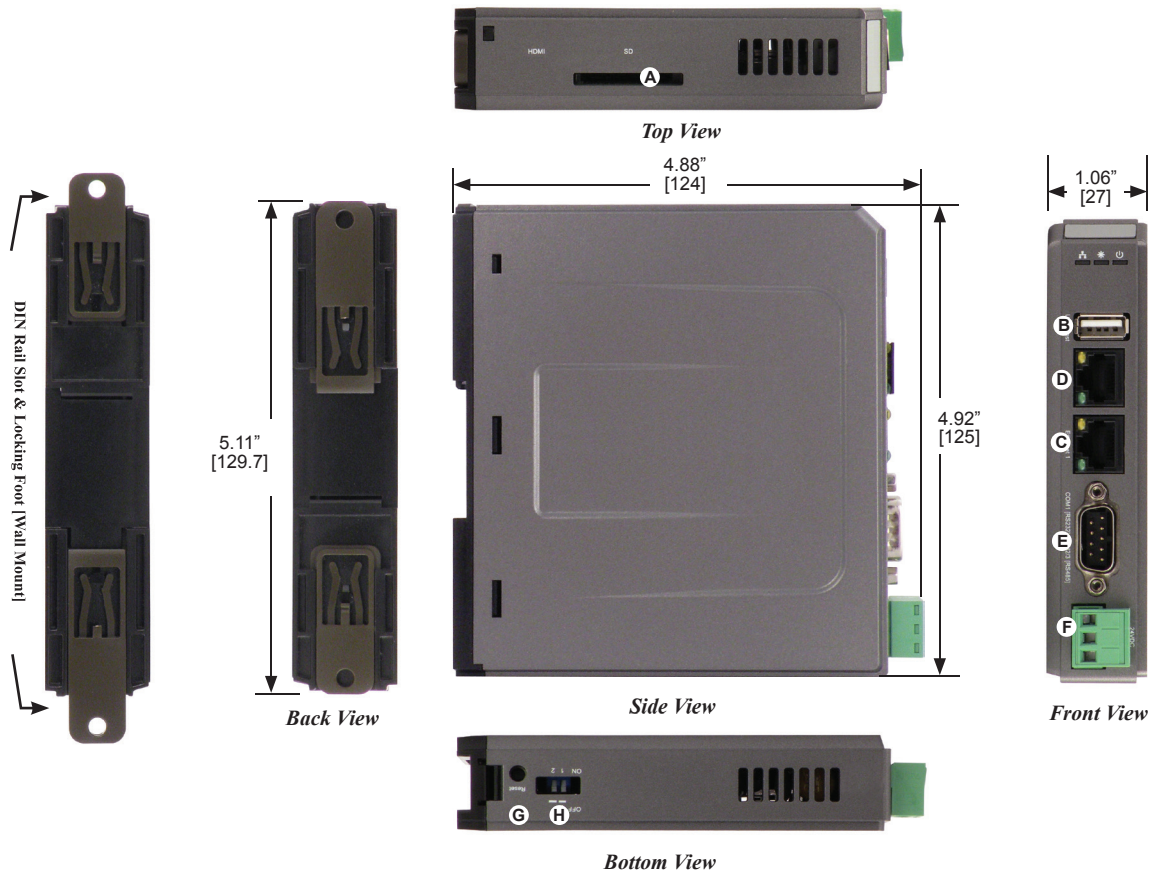
Environmental	
Operating Temperature	-4 ~ 131°F (-20 ~ 55°C)
Storage Temperature	-4° ~ 158°F (-20 ~ 70°C)
Relative Humidity	10% ~ 90% (non-condensing)
Shock (operation)	10 to 25Hz (X, Y, Z direction, 2G, 30 minutes)
Raitings	IP20
Certifications	CE, cULus, RoHS

Mechanical	
Enclosure	Plastic - charcoal grey
Dimensions (WxHxD)	5.12 x 4.53 x 1.06 inches [130 x 115 x 27mm]
Weight	0.40 lbs [0.18kg]
Mounting	35mm DIN rail or wall mount
Power Requirements	24VDC, 230mA nominal

Specifications subject to change without notice.

## Dimensions

Dimensions in inches [mm]



### Legend

- |                     |                           |                |
|---------------------|---------------------------|----------------|
| A SD Card Slot      | D Ethernet Port 2         | G Reset Button |
| B USB 2.0 Host Port | E DE9P Com Port 1, 2, & 3 | H DIP Switches |
| C Ethernet Port 1   | F Power Plug              |                |

Maple Systems, Inc.

808 134th St SW, Suite 120, Everett, WA 98204

425.745.3229 • 425.745.3429 (fax) • Email: [maple@maple-systems.com](mailto:maple@maple-systems.com) • [www.maplesystems.com](http://www.maplesystems.com)