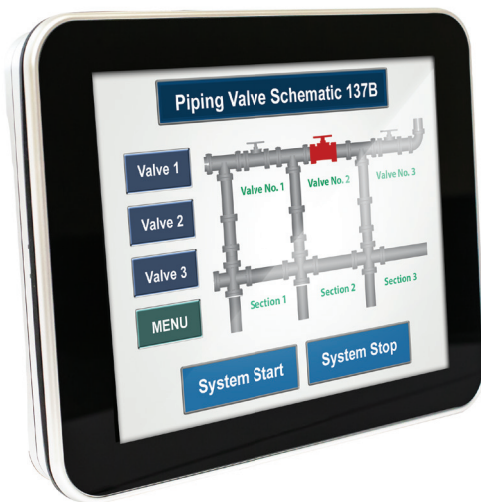


## RMI5090



### 9.7" Capacitive Touchscreen Display

- Capacitive touchscreen
- 1024 x 768 resolution
- 262,000 color TFT display
- Ultra-slim form factor
- 32 Bit RISC CPU, 1GHz
- 512MB Flash memory, 1GB RAM
- Panel mount or VESA 75
- Built-in speaker
- Optional display for RMI5010
- Connects to RMI5010 via Ethernet port
- 24VDC input required

The high-tech RMI5090 was designed as an optional display for the RMI5010. A bright, capacitive touchscreen provides a smooth, easy user experience to this local display.

The Maple Systems RMI5090 perfectly complements the RMI5010 with a bright 1024 x 768 pixel touchscreen display, high-speed 1GHz microprocessor, and 512MB of memory for complex graphic-intensive projects.

The RMI5090 features a capacitive touchscreen made of durable 7H tempered glass, offering the ability to swipe, pinch, and zoom on trend and historical data objects. A high-resolution LCD and Cortex A9 1GHz Dual-Core processor deliver top-notch graphics performance to any project.

Common configurations include:

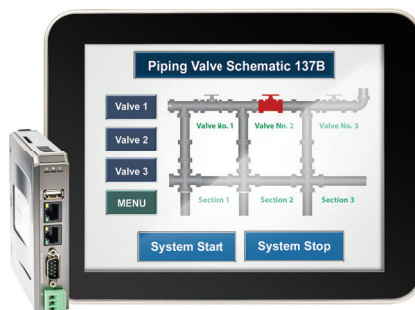
- Connect up to three RMI5090 displays to one RMI5010 controller

- One RMI5090 can monitor and rapidly switch between up to three RMI5010 controllers, but can only access information one controller at a time
  - The RMI5090 can only be paired with the RMI5010

The RMI5090 requires no programming. Simply connect it to a 24VDC and plug the display into the RMI5010's Ethernet port.

Press a button to upload your project from the RMI5010 and you are up and running.

The thin form factor makes the RMI5090 ideal for panel mounting in tight spots, while the fanless design requires no extra space for cooling. This local display delivers a high-tech experience to any operator and is perfectly paired with the RMI5010.



**Every Machine  
Needs the  
Human Touch**



[www.maplesystems.com](http://www.maplesystems.com)

# RMI5090 Specifications

## Hardware

CPU Type	32-bit RISC Cortex-A9 1GHz
Memory	512MB Flash, 1GB RAM
SD Card Slot	N/A
Ethernet Port	10/100/1000 Base-T
Serial Ports	N/A
USB Ports	N/A
RTC	Built-In

## Display

Type	9.7" TFT
Size (WxH)	9.7" diagonal
Resolution (pixels)	1024 x 768
Brightness (cd/m <sup>2</sup> )	350
Contrast Ratio	500:1
Max Colors	262,000
Viewing Angle (°)	50/70/70/70 (T,B,R,L)
Backlight	LED
Backlight Longevity	>30,000 hrs.

Specifications subject to change without notice.

## Touchscreen

Type	7H tempered glass, capacitive type
Resolution	N/A
Light Transmission	Above 85%
Lifespan	10 million activations minimum

## Environmental

Operating Temperature	32 ~ 122°F (0 ~ 50°C)
Storage Temperature	-4° ~ 140°F (-20 ~ 60°C)
Relative Humidity	10 ~ 90% (non-condensing)
Shock (operation)	10 to 25Hz (X,Y,Z direction, 2G, 30 minutes)
Ratings	IP65, NEMA 4
Certifications	CE, cULus, RoHS

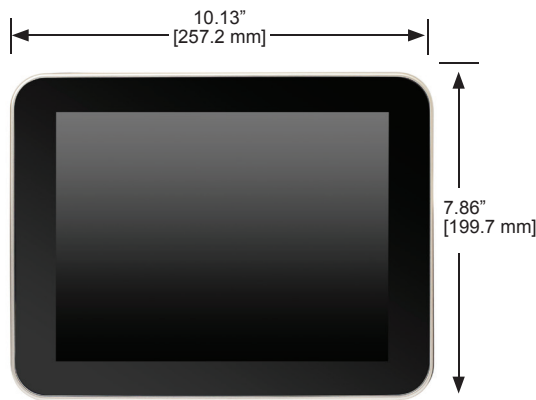
## Mechanical / Electrical

Enclosure	Plastic - charcoal grey
Dimensions (WxHxD)	10.13" x 7.86" x 1.29" [257.2 x 199.7 x 32.7mm]
Panel Cutout Dim. (WxH)	9.78" x 7.52" [248.5 x 191mm]
Weight	1.68 lb [0.76kg]
Mounting	Panel mount, VESA compatible
Power Requirements	24VDC, 900mA
Isolation Resistance	Exceed 50MΩ at 500VDC

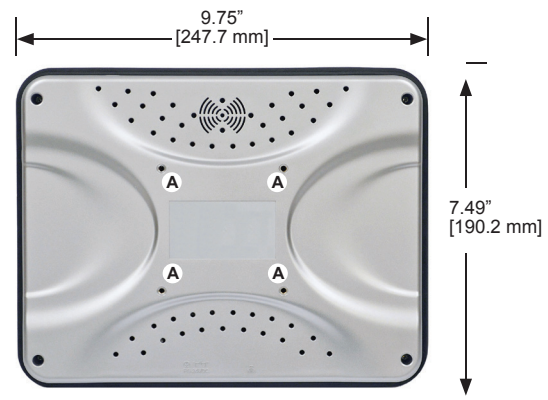
## Order Number

RMI5090	Cloud human machine interface
---------	-------------------------------

## Dimensions



Front View



Rear View

- A VESA 75mm screw holes
- B Power Connector
- C Ethernet port



Bottom View

Dimensions in inches [mm]

Maple Systems, Inc.

808 134th St SW, Suite 120, Everett, WA 98204

425.745.3229 • 425.745.3429 (fax) • Email: [maple@maple-systems.com](mailto:maple@maple-systems.com) • [www.maplesystems.com](http://www.maplesystems.com)