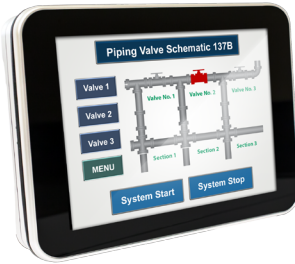




9.7" Capacitive Display



- Capacitive Touchscreen
- 1024 x 768 Resolution
- 32 Bit RISC Cortex-A9, 1 GHz CPU
- Ethernet, 2 Serial Ports
- Display Only

System	CPU	32-bit RISC Cortex-A9, 1 GHz
	Memory (RAM)	1 GB
	Memory (Flash)	512 MB
	RTC	Built-in
I/O Ports	Serial Ports	N/A N/A
	Ethernet	1 x 10/100/1000 Base-T
	CANbus	N/A
	USB Host	N/A
	USB Client	N/A
	Audio	Built-in mono speaker
	Video	N/A
	Wi-Fi	N/A
	HDMI	N/A
	SD Card Slot	N/A
	Display	Display Type
Size (W x H)		7.8 x 5.8 inches [197 x 148 mm]
Resolution (pixels)		1024 x 768
Luminance (cd/m ²)		350
Contrast Ratio		500:1
Max. Colors		262 K
LED Backlight Longevity Hrs.		30,000+
Touch Screen	Type	Tempered glass, capacitive type
	Active Area Accuracy	Length (X) ±2%, width (Y) ±2%
Electrical	Input Voltage	24 ± 20% VDC
	Input Current	900 mA @ 24 VDC
	Power Isolation	Built-in
	Isolation Resistance	Exceed 50 MΩ at 500 VDC
Mechanical	Enclosure	Plastic, black and silver
	PCB Coating	Yes
	Dimensions (W x H x D)	10.13 x 7.86 x 1.29 inches [257.2 x 199.7 x 32.7 mm]
	Weight	1.68 lbs. [0.76 kg]
Environmental	Mounting	Panel or VESA 75 x 75 mm mounting
	Operating Temperature	32° ~ 122°F (0° ~ 50°C)
	Storage Temperature	-4° ~ 140°F (-20° ~ 60°C)
	Relative Humidity	10% ~ 90% (non-condensing)
	Vibration Endurance	10 to 25 Hz (X, Y, Z direction, 2G, 30 minutes)
	Rating	IP65 compliant front panel, NEMA 4X indoor use only
Software	Certifications	cULus, CE, RoHS
	Software	cMT Viewer
Notes		