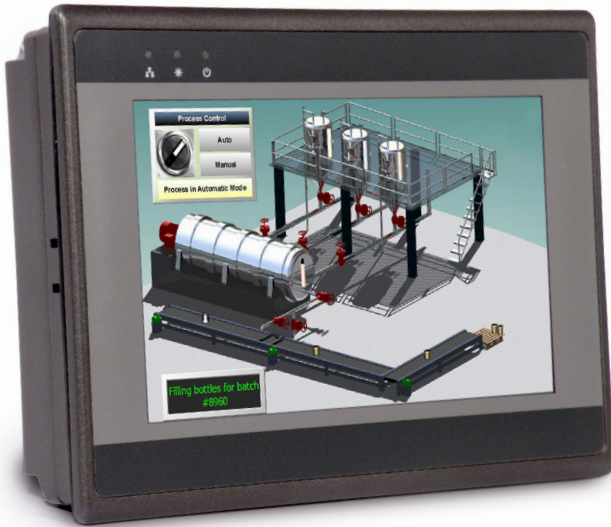


OMI5070C-CE



7" High-Performance Open HMI

- Aluminum enclosure
- 800 x 480 pixel TFT display, LED backlight
- Analog resistive touchscreen
- 32-bit RISC Cortex-A8, 1GHz
- 256 MB Flash, 256 MB DRAM
- Built-in Ethernet
- 2 serial ports
- 1 USB host port, 1 USB client port
- 1 SD card slot
- Isolated power supply
- Microsoft Windows® Embedded Compact 7 (C7P)

Maple Systems OMI5070C-CE Open HMI features a beautiful 7" touchscreen display. With robust processing power, this HMI system performs very well for demanding projects.

The OMI5070C-CE is an open machine interface running on Windows® Embedded Compact 7 with a high-res 7.0" touchscreen TFT display. A nominal 1.68" depth with port access along the bottom makes mounting in tight spots easy.

This display offers a host of hardware features generally not available in this price range including a 1GHz processor and 256MB of DRAM.

The Windows® Embedded Compact 7 (C7P SKU) operating system includes:

- Internet Explorer Web Browser
- Word Viewer
- Excel Viewer
- PowerPoint Viewer
- PDF Viewer
- Support for VBScript, ActiveSync, and RDP client.

Applications can be stored on the 256MB of built-in flash memory.

Maple Systems Open HMIs are the perfect solution for OEMs needing a low-cost, fanless, open-platform HMI for custom applications.

Create your own custom application or use off-the-shelf programs such as WebStudio™ SCADA software.

For applications that require a robust and powerful Open HMI at an affordable cost, choose Maple Systems OMI5070C-CE.



OMI5070C-CE Specifications

System	
Processor	32-bit RISC Cortex-A8, 1GHz
Memory	256MB RAM
Storage	256MB Flash
SD Memory Card Slot	SD/SDHC
RTC	Built-in

I/O Ports	
Ethernet Port	10/100 Base-T (RJ45)
Serial Ports*	COM1: RS-232/RS-485, 2 or 4 wire COM3: RS-232/RS-485, 2 wire
RS-485 Isolation	Yes
CAN Bus	N/A
Audio	1 line out
USB Host	USB 2.0 x 1
USB Client	USB 2.0 x 1 (Micro USB)

Display	
Type	7.0" TFT LCD
Size (WxH)	6.1 x 3.63 inches [154 x 92mm]
Resolution (pixels)	800 x 480
Brightness (cd/m2)	500
Contrast Ratio	500:1
Max Colors	16.7M
Viewing Angle (°)	50/60/65/65 (T,B,R,L)
Backlight	LED
Backlight Longevity	30,000 hrs

Touchscreen	
Type	4-wire analog resistive
Resolution	Continuous
Light Transmission	Above 80%
Lifespan	1 million activations minimum

Environmental	
Operating Temperature	-4° ~ 122°F [-20° ~ 50°C]
Storage Temperature	-4° ~ 158°F [-20° ~ 70°C]
Relative Humidity	10% ~ 90% (non-condensing)
Shock (operation)	10 to 25Hz (X, Y, Z direction, 2G, 30 minutes)
Certifications	cULus, CE, RoHS

Mechanical	
Enclosure	Aluminum
Ratings	IP66, NEMA 4X compliant front panel
PCB Coating	Yes
Dimensions (WxHxD)	7.89 x 5.76 x 1.67 inches [200 x 146 x 42.5mm]
Panel Cutout Dim. (WxH)	7.55 x 5.43 inches [192 x 138mm]
Weight	1.9 lbs [0.9kg]

Electrical	
Input Power	24VDC ± 20%
Power Consumption	400mA @ 24VDC
Voltage Resistance	500VAC (1 min)
Isolation Resistance	Exceed 50MW @ 500VAC

Software	
Operating System	Microsoft Windows® Embedded Compact 7 (C7P)
HMI/SCADA Application	Web Studio™ (optional)

Notes	
Specifications subject to change without notice.	
*COM1 RS-232 RTS/CTS and COM3 RS-232 cannot be used simultaneously.	