

# AutoSave Change Management

## Support for Proficy iFIX

PRODUCT PROFILE



### PRODUCT OVERVIEW

The AutoSave suite of products provides the software tools needed to manage all your automation programs. It controls and tracks the changes to your industrial programmable devices, HMIs, and program sources including iFIX projects. AutoSave works directly with the iFIX software to offer you both an interactive environment and background monitoring, resulting in a comprehensive change management solution. You have complete control over your device programs including:

- Launch for Edit; requires iFIX on PC
- Upload, Download, Comparison
- Single Module Supports v2.5 — v5.x
- Historical Tracking
- Automatic Change Notification
- Quick Disaster Recovery

### CLIENT / SERVER / AGENT

The AutoSave iFIX module complements the AutoSave system comprised of the client which is installed on each user workstation, an AutoSave server that acts as the master control center to coordinate all change-related programming activities and stores PLC project files, and an agent that provides distributed processing efficiencies for the server.

### ARCHIVED CONTENTS

All necessary Dynamics directory files as defined for the project are saved as a unit and archived. The entire program is restored to the client whenever needed for subsequent use.

### SECURED PROGRAM ACCESS

The AutoSave client interface allows users to access the AutoSave functions using a login and password. At login, the AutoSave server determines the level of access to the different areas and programs permitted to the user and the client PC. Additionally, AutoSave limits access to xxx functions not directly related to the launched on-line or off-line edit session in order to contain changes and provide audit trails and historical tracking.

### VERSION CONTROL

When the user requests a program via AutoSave, the file becomes locked and indicates who has the file checked out. The system denies access to others while the program is in use. When the user completes editing and saves the changes, AutoSave prompts for a revision note, creates a new current copy, relegates the previous current copy to a numbered ancestor, and unlocks the program.

### UPLOAD

During an upload, the AutoSave agent communicates with the running iFIX application to gather the files from the SCADA server, backs them up, and then compresses all the project's files and saves them to the server, creating a new current copy.

### DOWNLOAD

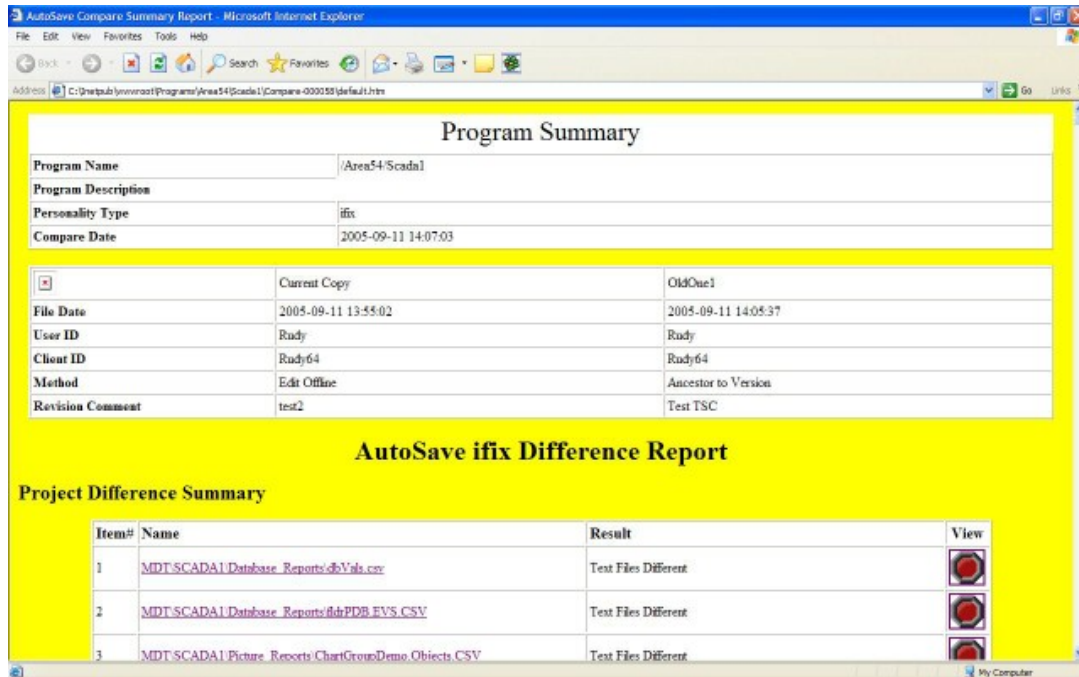
The user selects the current copy or an ancestor or version with which to update the SCADA server. A download to the processor passes the entire project zip file to the SCADA server. AutoSave's iFIX agent unzips the files and interacts with the running iFIX application to perform the actual restoration of the files. A new current copy is established on the AutoSave server. Accessing the download function only via a context menu, prompting for confirmation before initiating the download, and special warnings presented help ensure the safety of the running application.

### EDITS

Because the system is and must always be running, edits are made in a real time mode. In order to capture the editing event as an AutoSave revision copy, the user activates AutoSave's Launch button. The current copy is transferred from the server to the client and AutoSave's Remote Software Agent interface is presented. The user toggles back to iFIX to make the changes, then toggles back to RSA to conclude the edit session. The RSA dialog is closed and the user completes the AutoSave revision comment dialog, causing a new current copy to be stored.

## COMPARISON FEATURES

The iFIX module supports demand comparisons and scheduled comparisons as well.



## COMPARISON ON DEMAND

Any two copies of a project, such as current, local, ancestor, or version, can be compared to each other or to the device. As implied by its name, this comparison is done on a demand basis and may be performed from any client with access to the device program.

## AUTOMATED COMPARISON

The iFIX module allows for scheduled, unattended comparisons of flexibly configured groups of projects. Using the agent to perform the actual upload and comparison, AutoSave can compare the SCADA server's copy to the current copy or compare the current copy to a selected version (permanent, master copy). This module supports the **AutoUpdate** feature that enables AutoSave to update the server with a new current copy if the existing current copy is determined to be different than the device. The report summarizes the differences and provides links to the individual differences, as depicted in the above report example.

## NOTIFICATION

Notification e-mail can be automatically sent to selected users when comparisons or changes are made.

## SINGLE MODULE SUPPORTS MULTIPLE VERSIONS

This module supports versions 2.5-v5.x of iFIX. An AutoSave license purchased for iFIX support entitles the customer to use any of the supported versions.

System Highlights	
Client: Real-time Ancestry	✓
Server: Auto Unattended Operation	✓
Agent: Parallel/Distributed Processing	✓
Secured Program Access	✓
Version Control w/file compression	✓
Client Highlights	
Compare	✓
Editor Launch	✓
Device Upload	✓
Device Download	✓
Server / Agent Highlights	
Time-Base Scheduling	✓
AutoCompare	✓
AutoNotify	✓
AutoUpdate	✓