

# AutoSave

## Support for Mitsubishi GX Developer

*Enterprise tools for automation source management*

---

### OVERVIEW

The AutoSave suite of products provides you with the software tools needed to manage all your automation programs. AutoSave controls and tracks the changes to your industrial programmable devices and program sources including Mitsubishi GX Developer programs.

AutoSave's Microsoft Windows-based client application is fully integrated with the Mitsubishi GX Developer editor to offer you both an interactive environment and background monitoring, resulting in a comprehensive change management solution. You have complete control over your device programs including:

- Secure Editor Launch of Off-line; access is then available to on-line and download
- Historical Tracking and Audit Trails
- Automatic Change Notification
- Quick Disaster Recovery

### CLIENT / SERVER / AGENT

MDT's GX Developer support module is comprised of the AutoSave client installed on a Windows 2000 or XP workstation, an AutoSave server acting as the master control center to coordinate all change-related programming activities and store program files, and an agent providing distributed processing efficiencies for the server.

### ARCHIVED CONTENTS

All necessary GX Developer program files from the project path (defaulted to c:\MELSEC but user-configurable) are saved as a complete unit and restored to the client or agent whenever needed for subsequent use. The specific details of this can be provided.

### SECURED PROGRAM ACCESS

The Graphical User Interface (GUI)-based client interface allows a user to access the AutoSave functions with a login and password. At login, the AutoSave server determines the level of access to the different areas and programs that are permitted to the user *and* the client PC.

### VERSION CONTROL

When the user opens a program via AutoSave, the file becomes locked and indicates to others the user who has the file checked out. The system can deny further access while the program is in use. When the user completes editing and saves the changes, AutoSave prompts for a revision note, creates a new current copy, relegates the previous current to a numbered ancestor, and unlocks the program. Simply downloading an ancestor or master copy to the device and restoring that copy to the current copy can undo unwanted programming changes.

### COMMUNICATIONS

Device communications via Ethernet for the client and agent have been tested. Additional communication methods may require additional funding for development and testing at the discretion of MDT.

### UPLOAD

A client-based upload (using the local client copy of GX Developer) from the processor first retrieves the current copy files for the local PC, uploads the logic, data, and Standard RAM files from the processor to the client and then all the program's files are saved to the server, creating a complete new current copy.

A server-based upload employs the AutoSave agent technology and affords the capability of performing the upload from a client that cannot communicate with the processor or that does not have GX Developer installed.

## Features

### DOWNLOAD

Download is accessed from within the launched GX off-line session, available with either the current copy or a named version.

### COMPARISON FEATURES

Comparisons can be configured for each program to be either detailed or quick binary. Selections can vary between agents based on their .ini file settings. Additionally, a program can be set to compare the device memory and/or resource.

### COMPARISON ON DEMAND

Any two copies of a program, such as current, local, ancestor, version, or processor, can be compared to each other. This comparison is done on an as-needed basis and may be performed from any client with access to the device program.

### AUTOMATED COMPARE

The GX module allows for scheduled, unattended comparisons of configured groups of programs. Using the agent to perform the upload, AutoSave can compare the processor copy to the current copy or compare the current copy to a selected version (master copy). See comparison sample in the next column.

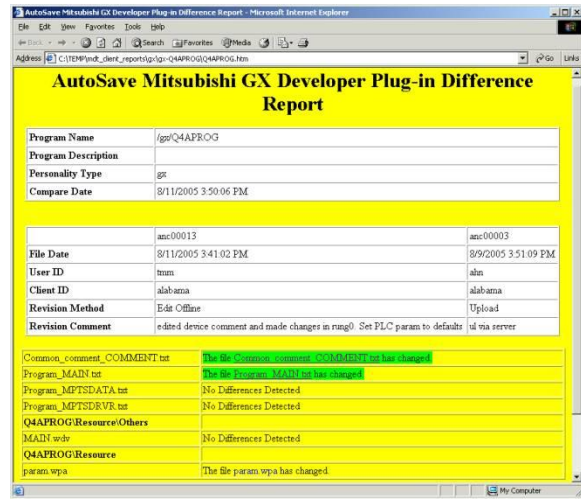
This module supports the **AutoUpdate** feature to enable AutoSave to replace the existing current copy if it is different than the processor.

### NOTIFICATION

Notification e-mail can be automatically sent to selected users when scheduled comparisons are completed. Comparison reports are displayed and e-mailed in HTML format.

### GX DEVELOPER EDITOR REQUIREMENTS

MDT certifies this module as operating properly with Mitsubishi GX Developer 8.x for the Q Series PLCs.



Sample above of Detailed compare with Device Memory and Resource Compares

## Capabilities

System Highlights	
Client: Real-time Ancestry	<input checked="" type="checkbox"/>
Server: Auto Unattended Operation	<input checked="" type="checkbox"/>
Agent: Parallel/Distributed Processing	<input checked="" type="checkbox"/>
Secured Program Access	<input checked="" type="checkbox"/>
Version Control w/file compression	<input checked="" type="checkbox"/>
Device Upload	<input checked="" type="checkbox"/>
Device Download	<input checked="" type="checkbox"/>
Client Highlights	
Compare	<input checked="" type="checkbox"/>
Editor Launch Off-line	<input checked="" type="checkbox"/>
Server / Agent Highlights	
Time-Base Scheduling	<input checked="" type="checkbox"/>
AutoCompare	<input checked="" type="checkbox"/>
AutoNotify	<input checked="" type="checkbox"/>
AutoUpdate	<input checked="" type="checkbox"/>
Server Platform Support	
Windows	<input checked="" type="checkbox"/>