

AutoSave

Support for Factory Talk View ME

Enterprise tools for automation source management

OVERVIEW

The AutoSave™ suite of products provides you with the software tools needed to manage all your automation programs. AutoSave controls and tracks the changes to your industrial programmable devices and program sources including VersaView and PanelView+ CE HMI programs.

AutoSave's Microsoft Windows-based client application is fully integrated with the Factory Talk View Machine Edition software to offer you both an interactive environment and background monitoring, resulting in a comprehensive change management solution. You have complete control over your device programs including:

- Secure Editing Off-line
- On Demand and On Schedule Comparisons
- Historical Tracking and Audit Trails
- Automatic, Real-time Change Notification
- Quick Disaster Recovery

CLIENT / SERVER / AGENT

The AutoSave Factory Talk View module is comprised of the AutoSave client, agent, and server.

- The client is installed on a Windows workstation and provides a graphical user interface into the system that is common to all program types supported by AutoSave.
- The AutoSave server acts as the master control center that coordinates all change-related programming activities and stores the archives of program files.
- The agent provides all device communications for the server and results in its distributed processing efficiencies.

ARCHIVED CONTENTS

The Factory Talk View module archives the .APA and .MER files, storing them in a compressed set on the server. They are restored to the client or agent whenever needed for subsequent use.

SECURED PROGRAM ACCESS

The GUI-based client interface allows you to access the AutoSave functions with a login and password. At login, the AutoSave server determines the level of access to the different areas and programs that are permitted to both you and the client PC.

VERSION CONTROL

When the user launches a program via AutoSave, the file becomes locked and indicates to others the user who has the file checked out. The system denies access to others while the program is in use.

When the user completes editing and saves the changes, AutoSave prompts for a revision note, creates a new current copy, relegates the previous current to a numbered ancestor, and unlocks the program.

Simply downloading an ancestor or master copy to the device and restoring that copy to the current copy can undo unwanted programming changes.

UPLOAD

Since FactoryTalk has the ability to convert the MER file to an APA file, when uploading, if the MER file in the PLC is different than the MER file in the current copy, the module creates a new APA file from the MER file in the newly created current copy. This creates a usable set of files for editing or downloading the program.

DOWNLOAD

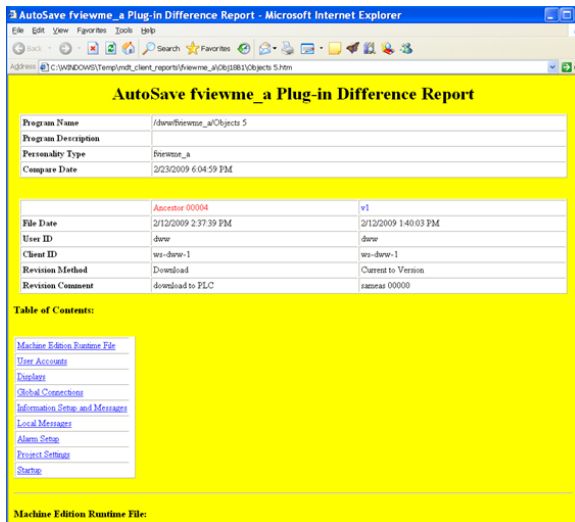
Using the local copy of Factory Talk View, a client-based download to the processor enables the user to select the current copy or any available ancestor or version with which to update the processor's logic and data files. Accessing the download function only via a context menu provides additional security, as does AutoSave's prompting for confirmation before initiating the download.

Features

COMPARISON FEATURES

Comparison to the processor uploads the ME Runtime file from the device and compares the MER files in a simple binary manner. Non-processor compares report binary difference results of the files and text side-by-side differences. Detailed comparisons are done on the files contained in the APA application archive, first determining if the APA files have a binary difference. Then a binary/text comparison of each file in the HMI project directory and the tag database CSV file is done.

An html report lists files that have been added, removed, or modified and provides a detailed report of the text file differences. The tag name databases are compared and any added/removed/modified tags are displayed in a table format showing the tag's attribute differences.



COMPARISON ON DEMAND

Any two copies of a program, such as current, local, ancestor, version, or processor, can be compared to each other. This comparison is done on an as-needed basis and may be performed from any client with access to the device program.

AUTOMATED COMPARISON

The Factory Talk View module allows for scheduled, unattended comparisons of configured groups of programs. Using the agent to perform the actual upload and comparison, AutoSave can compare the device's copy to

the current copy or compare the current copy to a selected version (permanent or master copy). The AutoSave module for Factory Talk View does support the **AutoUpdate** feature option to create a new current copy when differences between the device and current copy are detected.

NOTIFICATIONS

Notification e-mail is automatically sent to selected personnel when scheduled comparisons are completed and provides links to complete HTML detail reports.

COMMUNICATIONS

Supported communication to the device is via TCP/IP using RSLinx drivers.

Capabilities

System Highlights	
Client: Real-time Ancestry	<input checked="" type="checkbox"/>
Server: Auto Unattended Operation	<input checked="" type="checkbox"/>
Agent: Parallel/Distributed Processing	<input checked="" type="checkbox"/>
Secured Program Access	<input checked="" type="checkbox"/>
Version Control w/file compression	<input checked="" type="checkbox"/>
Device Download	<input checked="" type="checkbox"/>
Client Highlights	
Compare	<input checked="" type="checkbox"/>
Editor Off-line	<input checked="" type="checkbox"/>
Server / Agent Highlights	
Time-Base Scheduling	<input checked="" type="checkbox"/>
AutoCompare	<input checked="" type="checkbox"/>
AutoNotify	<input checked="" type="checkbox"/>
AutoUpdate	<input checked="" type="checkbox"/>
Server Platform Support	
Windows	<input checked="" type="checkbox"/>
UNIX	<input checked="" type="checkbox"/>

VERSION SPECIFIC MODULES

MDT has tested its module using Rockwell Factory Talk View Machine Edition (both standalone and as a part of SE) version 5.x.