

# AutoSave

## Support for ProWORX NxT

**Enterprise tools for automation source management**

---

### OVERVIEW

The AutoSave suite of products provides you with the software tools needed to manage all your automation programs. AutoSave controls and tracks the changes to your industrial programmable devices and program sources including ProWORX NxT programs.

AutoSave's Microsoft Windows-based client application is fully integrated with the Schneider ProWORX NxT editor to offer you both an interactive environment and background monitoring, resulting in a comprehensive change management solution. You have complete control over your device programs including:

- Secure On-line and Off-line Edit, Monitor
- Historical Tracking and Audit Trails
- Automatic Change Notification
- Quick Disaster Recovery
- Support for Extended Memory Reads

### CLIENT / SERVER / AGENT

The AutoSave ProWORX NxT module is comprised of the AutoSave client installed on a Windows 2000 or XP workstation, an AutoSave server acting as the master control center that coordinates all change-related programming activities and stores program files, and an agent providing distributed processing efficiencies for the server.

### ARCHIVED CONTENTS

All necessary ProWORX NxT program files (including but not limited to the logic data and pointer, configuration, extended memory, database pointer, configuration, doc, etc.) are saved as a complete unit and restored to the client whenever needed for subsequent use.

### SECURED PROGRAM ACCESS

The Graphical User Interface (GUI)-based client interface allows a user to access the AutoSave functions with a login and password. At login, the AutoSave server determines the level of access to the different areas and programs that are permitted to the user *and* the client PC. Additionally,

AutoSave limits access to functions not directly related to the launched on-line or off-line edit session in order to contain changes and provide audit trails and historical tracking.

### VERSION CONTROL

When the user opens a program via AutoSave, the file becomes locked and indicates to others the user who has the file checked out. The system can deny further access while the program is in use or allow a read-only copy. When the user completes editing and saves the changes, AutoSave prompts for a revision note, creates a new current copy, relegates the previous current to a numbered ancestor, and unlocks the program. Simply downloading an ancestor or master copy to the device and restoring that copy to the current copy can undo unwanted programming changes.

### COMMUNICATIONS

Communications are accomplished via Ethernet to so equipped processors, to a Modbus-Ethernet Bridge, SA-85 card to Modbus Plus, BP85 bridges with support for up to four levels or bridging, or Ethernet to Cobox to Modbus.

### UPLOAD

A client-based upload (using the local client copy of ProWORX NxT) from the Modicon processor first retrieves the current copy files for the local PC, uploads the logic and data files from the processor to the client and then all the program's files are saved to the server, creating a complete new current copy.

A server-based upload employs the AutoSave agent technology and affords the capability of performing the upload from a client that cannot communicate with the processor or that does not have ProWORX NxT installed.

PROWORX NxT PROFILE

**Features**

**DOWNLOAD**

A client-based download (using the local copy of ProWORX NxT) to the processor enables the user to select the current copy or any available ancestor or version with which to update the processor's logic and data files. Accessing the download function only via a context menu provides additional security, as does AutoSave's prompting for confirmation before initiating the download.

**COMPARISON FEATURES**

AutoSave uses ProWORX NxT to perform comparisons and provides a special menu facilitating the configuration of the networks, registers, configurations, extended memory, and/or other factors that are to be compared.

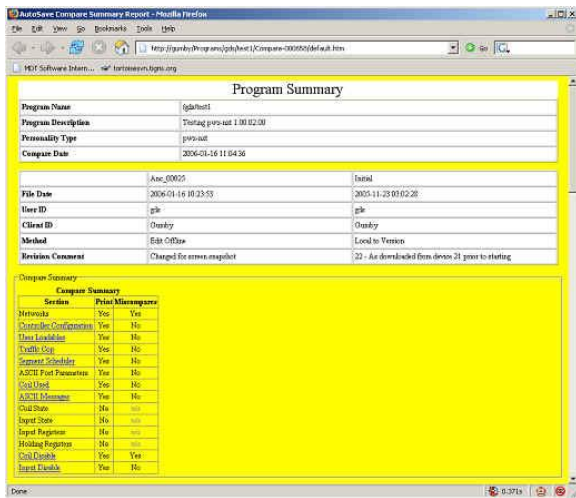
**COMPARISON ON DEMAND**

Any two copies of a program, such as current, local, ancestor, version, or processor, can be compared to each other. This comparison is done on an as-needed basis and may be performed from any client with access to the device program. The NxT Compare Summary report is displayed.

**AUTOMATED COMPARE**

The ProWORX NxT module allows for scheduled, unattended comparisons of configured groups of programs. Using ProWORX NxT software installed on the agent to perform the actual upload and the comparison, it can compare the Modicon processor copy to the current copy or compare the current copy to a selected version (master copy).

This module supports the **AutoUpdate** feature that enables AutoSave to replace the existing current copy if it is different than the processor.



**NOTIFICATION**

Notification e-mail can be automatically sent to selected users when scheduled comparisons are completed. Comparison reports are displayed and e-mailed in HTML format.

**Capabilities**

System Highlights	
Client: Real-time Ancestry	<input checked="" type="checkbox"/>
Server: Auto Unattended Operation	<input checked="" type="checkbox"/>
Agent: Parallel/Distributed Processing	<input checked="" type="checkbox"/>
Secured Program Access	<input checked="" type="checkbox"/>
Version Control w/file compression	<input checked="" type="checkbox"/>
Device Upload	<input checked="" type="checkbox"/>
Device Download	<input checked="" type="checkbox"/>
Client Highlights	
Compare	<input checked="" type="checkbox"/>
Compare Selected Networks	<input checked="" type="checkbox"/>
Editor Launch	<input checked="" type="checkbox"/>
Editor Menu Access	<input checked="" type="checkbox"/>
Server / Agent Highlights	
Time-Base Scheduling	<input checked="" type="checkbox"/>
AutoCompare	<input checked="" type="checkbox"/>
AutoNotify	<input checked="" type="checkbox"/>
AutoUpdate	<input checked="" type="checkbox"/>
Server Platform Support	
Windows	<input checked="" type="checkbox"/>

**EDITOR REQUIREMENTS**

MDT has certified its plug-in module release as operating properly with Schneider ProWORX NxT v 2.20 Special 8. The client and agent need both the on-line and off-line versions of NxT.

The new module is a direct replacement for the previous *Classic* Module.

