

AutoSave

Support for ProWORX³²

Enterprise tools for automation source management

Overview

The AutoSave suite of products provides you with the software tools needed to manage all your automation programs. AutoSave controls and tracks the changes to your industrial programmable devices and programs including ProWORX³² programs.

AutoSave's Microsoft Windows-based client application is fully integrated with the ProWORX³² software to offer you both an interactive environment and background monitoring, resulting in a comprehensive change management solution. You have complete control over your device programs including:

- Secure editing Online/Off-line including Monitoring functionality
- Historical Tracking and Audit Trails
- Automatic Change Notification
- Quick Disaster Recovery

CLIENT / SERVER / AGENT

The AutoSave ProWORX³² modules are comprised of the AutoSave client installed on a Windows workstation, an AutoSave server acting as the master control center that coordinates all change-related programming activities and stores program files, and an agent providing distributed processing efficiencies for the server.

ARCHIVED CONTENTS

The ProWORX³² file set is comprised of the pwx file. All its components are saved as a compressed unit. The complete unit is restored to the client whenever needed for subsequent use.

SECURED PROGRAM ACCESS

The GUI-based client interface allows a user to access the AutoSave functions with a login and password. At login, the AutoSave server determines the level of access to the different areas and programs that are permitted to the user and the client PC.

VERSION CONTROL

When a program is opened via AutoSave, the file becomes locked and indicates the user who has the file checked out. Other users see this lock condition when attempting to access the program. The system denies access to locked programs.

When the user completes editing and saves the changes, AutoSave prompts for a revision note, creates a new current copy, relegates the previous current to a numbered ancestor, and unlocks the program. Undo unwanted programming changes by simply downloading an ancestor or master copy to the device and restoring that copy to current.

UPLOAD

Upon upload initiation, the client/agent first retrieves the current copy files from the server, uploads the files from the processor and its extended memory, if used, to the PC and then saves all the program's files to the server, creating a complete new current copy.

AutoSave agent technology affords the capability of performing the upload from a client that cannot communicate with the processor or that does not have ProWORX³² – or the appropriate version of ProWORX³² – installed.

DOWNLOAD

Operating from a client with the proper ProWORX³² software, you select the current copy or any available ancestor or version with which to update the device's files. A new current copy is stored.

Accessing the download function only via a context menu provides additional security, as does AutoSave's prompting for confirmation before initiating the download.

PROWORX³² PROFILE

Comparison Features

The ProWORX³² modules support demand comparisons and scheduled comparisons as well.

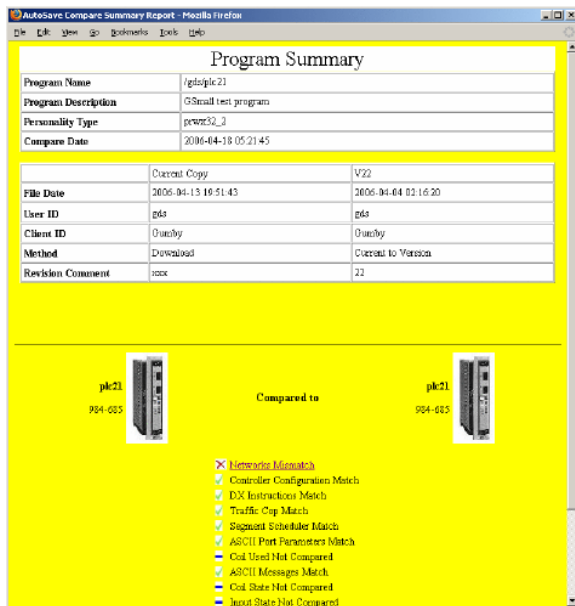
The AutoSave for Windows client interface enables you to configure the networks, configurations, and other ProWORX-specific settings to tailor the comparison factors as needed and appropriate.

COMPARISON ON DEMAND

Any two copies of a program, such as current, local, ancestor, version, or processor, can be compared to each other. This comparison is done on an as-needed basis and may be performed from any client with access to the device program.

AUTOMATED COMPARISON

The ProWORX³² modules allow for scheduled, unattended comparisons of configured groups of programs. Using the agent to perform the actual upload and comparison, AutoSave can compare the device's copy to the current copy or compare the current copy to a selected version (permanent or master copy). The AutoSave modules for ProWORX³² do support the **AutoUpdate** feature option to create a new current copy when differences between the device and current copy are detected.



NOTIFICATION

Notification e-mail is automatically sent to designated personnel when scheduled comparisons are completed and provides links to complete HTML detail reports.

Capabilities

System Highlights	
Client: Real-time Ancestry	✓
Server: Auto Unattended Operation	✓
Agent: Parallel/Distributed Processing	✓
Secured Program Access	✓
Version Control w/file compression	✓
Device Upload	✓
Device Download	✓
Client Highlights	
Compare	✓
Editor Controlled Actions/ User Rights	✓
Editor Launch	✓
Editor Menu Access	✓
User Configurable Comparison Factors	✓
Server / Agent Highlights	
Time-Base Scheduling	✓
AutoCompare	✓
AutoNotify	✓
AutoUpdate	✓
Server Platform Support	
Windows	✓
UNIX	✓

PROWORX³² EDITOR REQUIREMENTS

Separate, version-specific and platform-specific modules are provided for ProWORX³² version 1.0 SR1 and v1.11 (English) or version 2.0 Patch A-D plus v2.1 Patch A. This enables sites to convert to the newer release when appropriate. An AutoSave license purchased for ProWORX³² support entitles the customer to use either module.