

"AC & DC Sub-metering"

Presentation

by

John Stratford - Measurlogic Inc.



www.measurlogic.com

Measurlogic Overview

- Based in Centennial, Colorado - where the DTS product family is manufactured and supported.
- Complies with “Buy American Requirement” of the American Recovery & Reinvestment Act (ARRA).
- Have been in the US market for over 12 years
- Over 30 years of experience in electrical measurement and its associated markets



Mission

- Our Mission:
 - Produce an extensive range of reliable and cost-effective AC and DC electrical sub-metering solutions
 - Customer driven product development – Innovate don't copy
 - Provide our customers with “Value”

Meters, Systems and Support
Before, During and after the Sale



www.measurlogic.com

AC Energy Sub-Meters

Choose for best form and fit

- DTS range of AC sub-meters
 - DTS k2 & DTS 305: Front panel mount
 - DTS 310 & DTS 305: DIN rail mount
 - DTS SMX: Weather-proof Surface mount
 - DTS SKTD: Socket meter replacements



DTS – AC Sub metering

DTS Series of Single or 3 phase meters common features

- “Revenue” Grade
 - ANSI C12.1 Class 0.5 Energy Meter
- Flexible Measurement Topologies
 - Three Phase 3 and 4 wire, 208-480V, 600V option
 - Single Phase 2 or 3 wire, 120/240V
- Remote Communications,
 - Modbus, BACnet, LonWorks & SNMP
- Various I/O configurations
- 4 quadrant measurements (Net metering)
- User-definable Modbus register area allowing for flexible product emulation



DTS 310 – Key features

- DTS 310 is
 - ultra-compact
 - DIN rail mounting
 - Pluggable terminals for easy of install/removal
 - self powered from voltage inputs
 - Has a DC auxiliary option (if required)
 - Uses split core “safe” CTs
 - 2 x digital inputs & 1 x digital output OR 3 x digital outputs
 - 2 wire or TCP communications interface
 - Modbus, BACnet, LonWorks or SNMP protocols



DTS 305 – Key features

- DTS 305 is
 - Compact & DIN rail mounting
 - Isolated auxiliary supply 90-277Vac/dc or DC options
 - Uses split core “safe” OR 5A CTs
 - Pluggable terminals for easy of install/removal
 - 6 x isolated analog outputs (configurable)
 - 4 x digital inputs (status or counters)
 - Up to 10 x digital outputs
 - Configurable, Remote Display module
 - 3 line, 8 pages
 - LCD , back lit
 - 2 wire or TCP comms interface
 - Modbus, BACnet or SNMP protocols



DTS SMX – Key features

- DTS SMX is
 - Complete metering package (Contractor Friendly)
 - Surface mounting
 - Weatherproof - NEMA 4X enclosure
 - Built-in fusing
 - Power from voltage terminals (Va-n OR Va-b)
 - Uses split core "safe" OR 5A CTs
 - 2 x digital inputs & 1 x digital output
 - Hard wire interfaces
 - 2 wire and TCP communications interface
 - Wireless interfaces (optional)
 - Wi-Fi OR GSM / CDMA cell interfaces
 - Modbus, BACnet or SNMP protocols
 - Integrated, configurable LCD Display module



DTS SKTD – Key features

- DTS SKT and SKTD are
 - Socket sub-meters with communications - unique opportunity
 - Replacement for old electro-mechanical meters
 - All form factors are available
 - Integral display or blank
 - 1 x digital output (optional)
 - Configurable, Integral Display module (SKTD)
 - 3 line, 8 pages
 - LCD , back lit
 - 2 wire and TCP communications interface
 - BACnet, Modbus protocols



DTSk2 Series

DTSk2 Series of 3 phase meters

- ANSI C12.20 Class 0.5 and 0.2 Energy Meter
- Advance PQ features
 - Sags, Surges, Harmonics to 50th
 - Voltage & Current Unbalance
- Display can be mounted remotely and communicate with 32 x measurement Modules
- 3 expansion card slots
- Integral Modbus TCP
- On board logging – SD card up to 2GB
- Digital Input / output cards
- Analog Input / output card



Current Transformers

- Solid OR Split core OR Flexible RopeCT
 - From 5A up to 5000A
- 5A OR mV outputs
- 5A secondary for “standard” or traditional systems
 - Care must be taken when open-circuiting the secondary
- mV CTs – ideal for sub-metering
 - Split core or Flexible RopeCT for easy of install
 - Lower cost than 5A equivalent
 - We calibrate meter with CT for superior overall system accuracy



DTS DC – DC Sub-meter

- DTS DC is
 - ultra-compact
 - DIN rail mounting
 - Pluggable terminals for easy of install/removal
 - 12, 24 or 48Vdc auxiliary
 - Provides DC Voltage, Current, Power and Energy
 - Up to 800Vdc DC Voltage input
 - Various current input alternatives
 - 0 – 5A direct
 - 50 – 100mV shunt
 - External solid / split core Hall effect sensor
 - 2 x digital inputs & 1 x digital output OR 3 x digital outputs
 - 2 wire and TCP communications interface
 - Modbus, BACnet, LonWorks or SNMP protocols



DC shunts & Hall effect sensors

- DC Shunts

- 1A to 15kA
- 50mV output (100mV option)
- Non-isolated
- Various mounting configurations



- Hall Effect sensors

- Non contact DC current measurement (isolated)
- Solid core or split core
- 5A to multiple kA

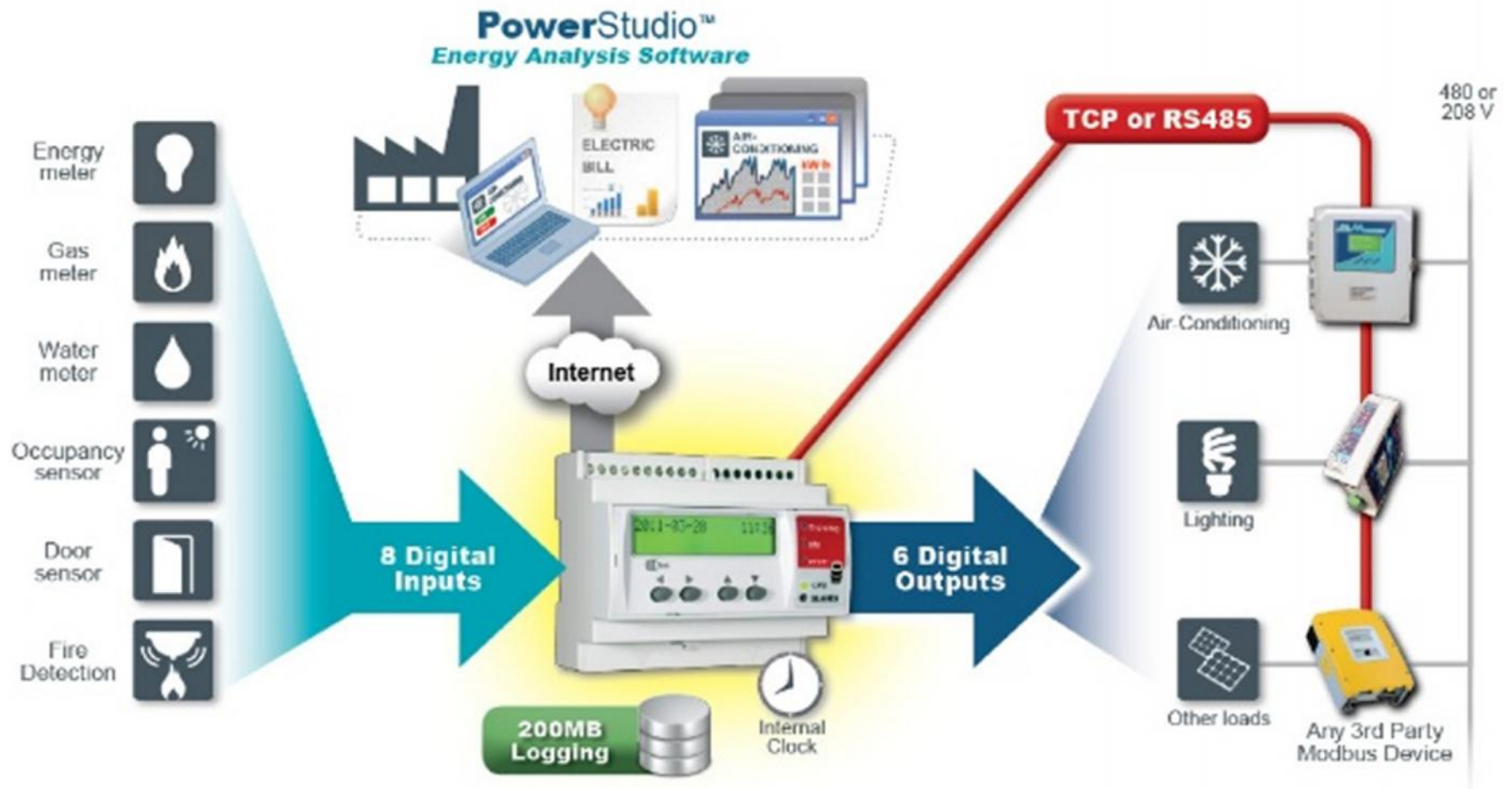


EDS Data logger

- EDS Data Logger key features are
 - DIN rail mounting
 - 200 MB FIFO memory
 - TCP or RS-485 Modbus connectivity for up to five slave devices
 - Eight potential free digital inputs
 - Six relay outputs – manually controlled via the web server and/or automatically through user configurable events
 - Ethernet connectivity to LAN/VPN or Internet
 - Data transfer initiated by EDS thus significantly reducing firewall/IT networking issues
 - Built-in PowerStudio™ web server to display data using a conventional browser - no additional software needed

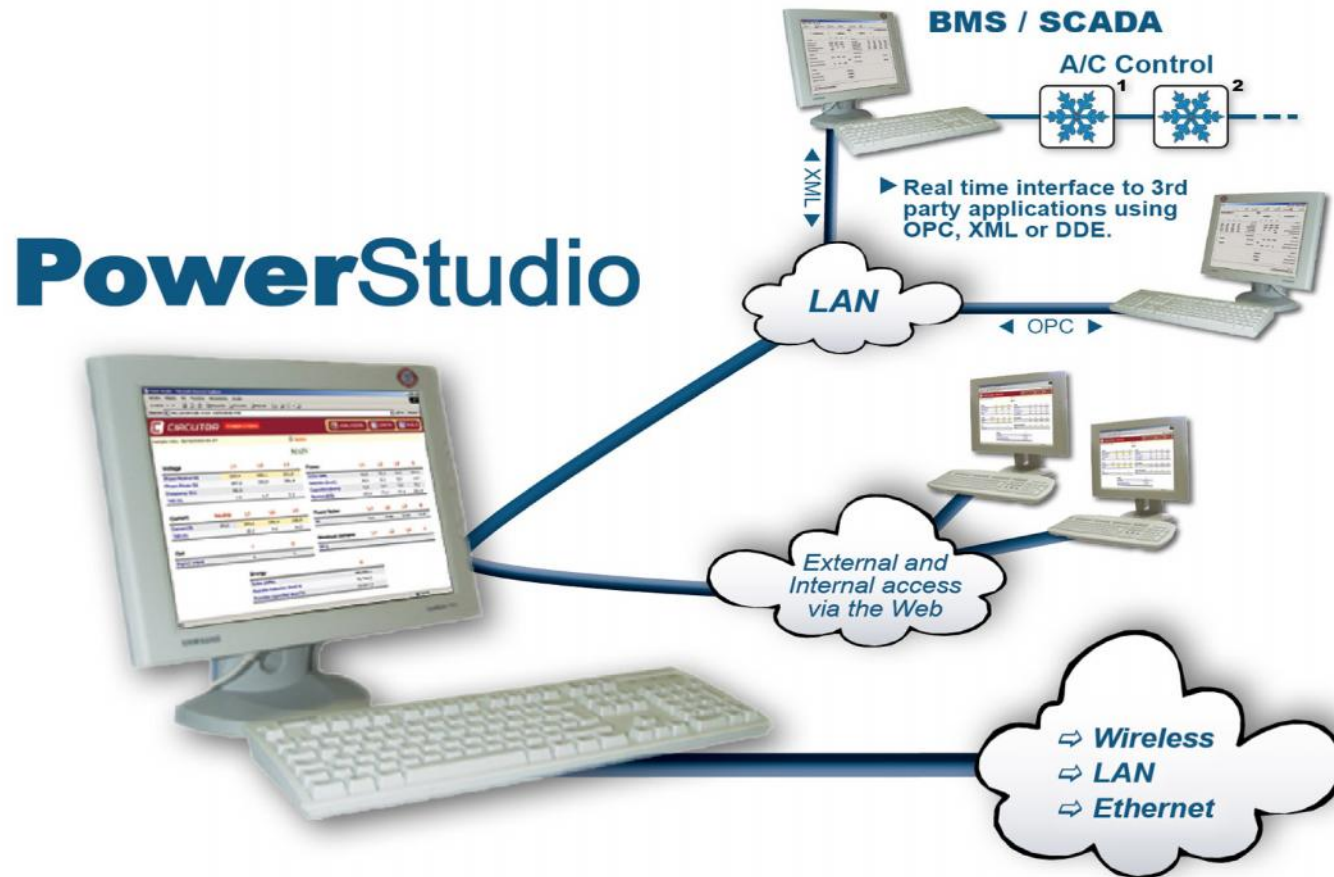


EDS Data logger (cont.)



PowerStudio

Your web enabled key to Energy Efficiency



PowerStudio (cont)

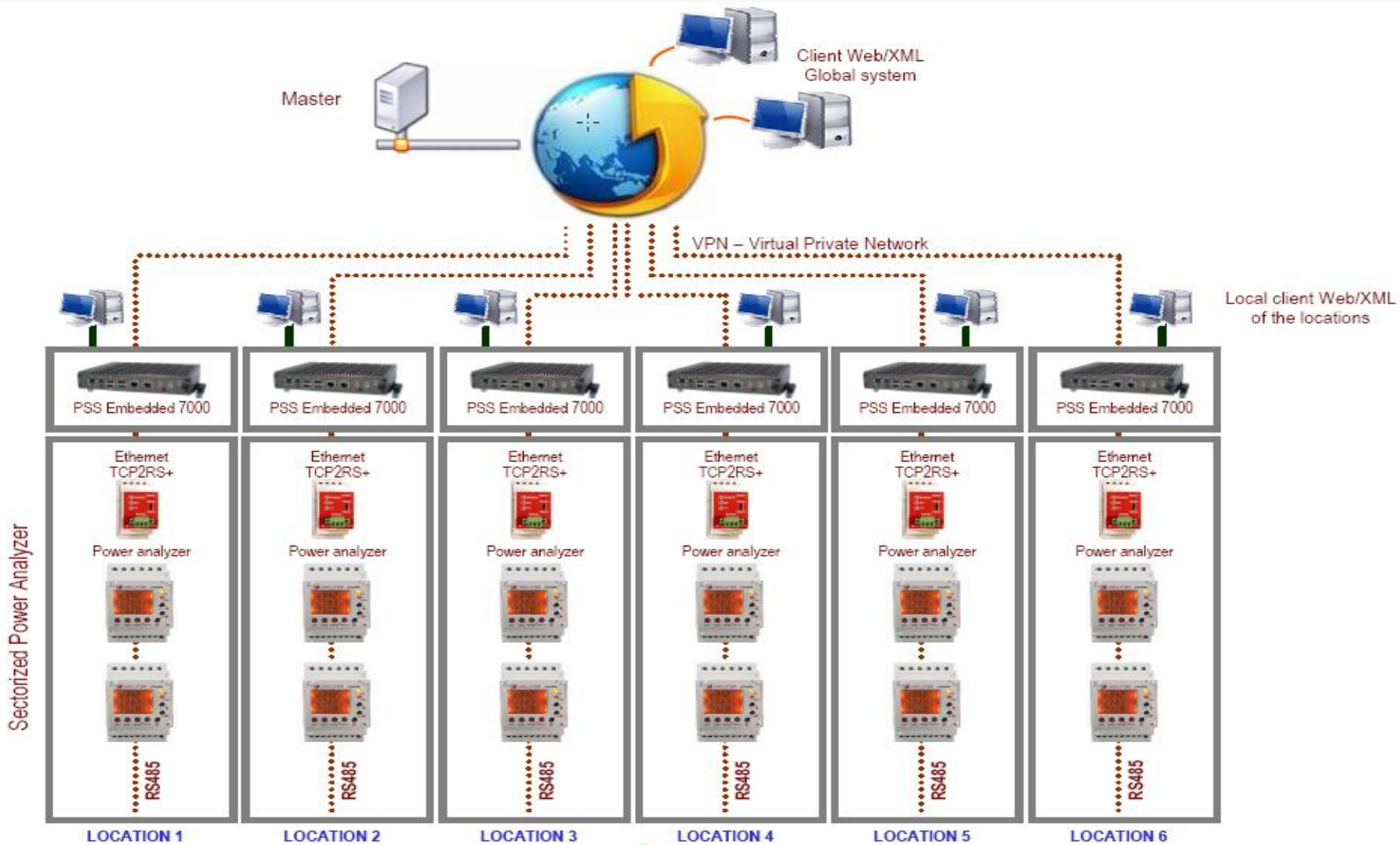
- Key Commercial Benefits of PowerStudio
 - Software is purchased and owned by the customer. There are NO additional monthly or annual licenses payable.
 - There is no limit to the number of users NOR additional cost. This is controlled by the Administrator of the system providing user access through password control.
 - Number of attached devices also is not limited so expanding the system to accommodate multiple meters can easily be achieved. There is NO per device license
 - Based on a central database that can reside on any PC/server on the LAN network.
 - Client application (included) or std browser is used to access the data.



PowerStudio (cont)

- Key Technical Features of PowerStudio
 - Integrates with our extensive range of meters & 3rd party meters
 - Real time display of all electrical parameters or process variables
 - Built in web-server
 - 3 main elements: Editor, Engine & Client
 - Flexible report generator included
 - Design tools for personalized screens included
 - XML Service and DDE Built in (provides ability to link with 3rd party applications in real time)
 - OPC Server also available
 - Access via the LAN or Internet with password protection providing ability to create user profiles
 - Alarm / Event module.

Multiple Location Deployment



Integrated Energy Management

YOU CAN'T CONTROL / MANAGE / REDUCE
UNTIL YOU CAN MEASURE !!

Single tool to monitor all of your utilities
Analyze how, when, where energy is used & any inefficiencies
Verify your energy saving initiatives
Energy usage allocated based on actual consumption



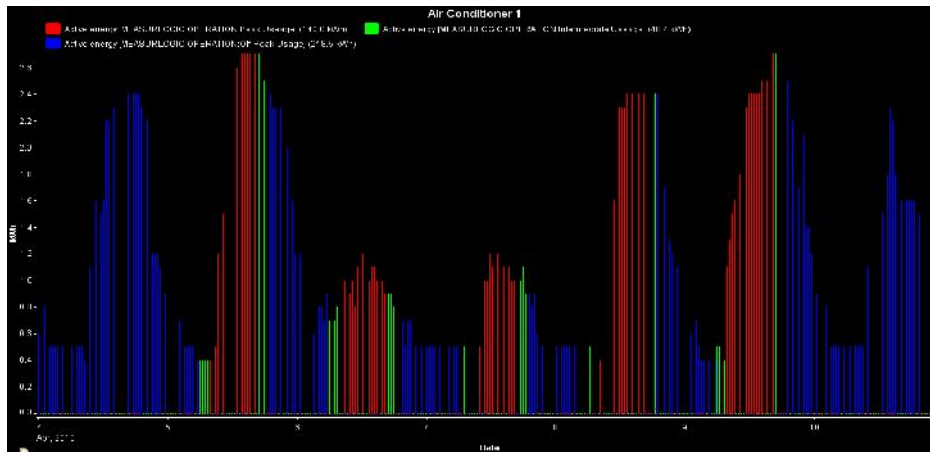
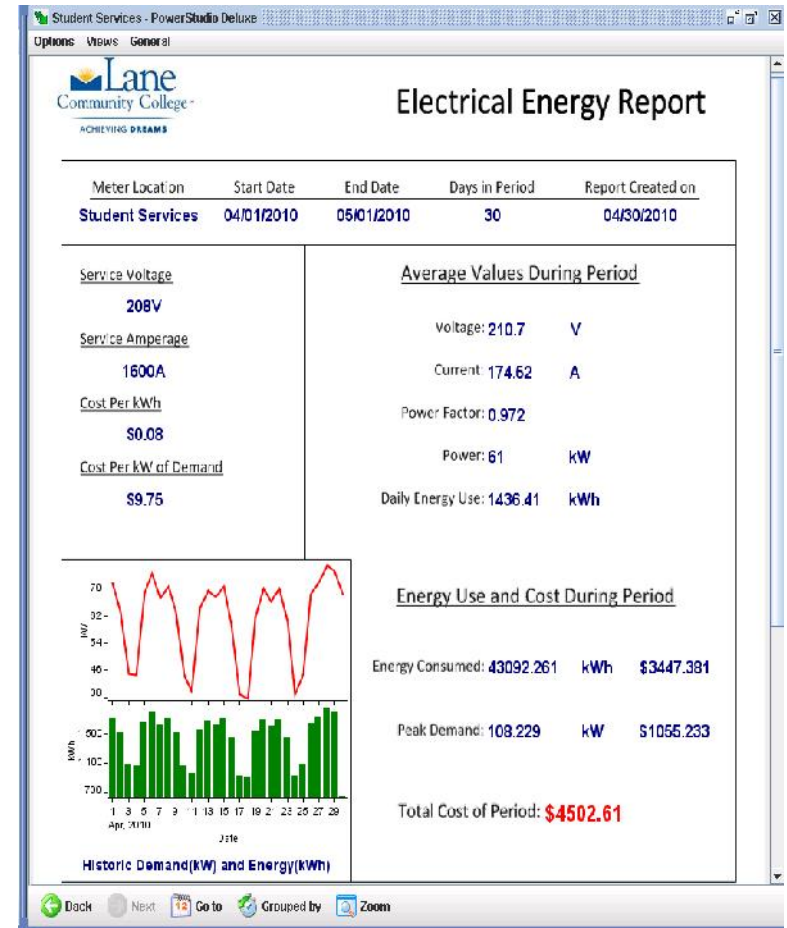
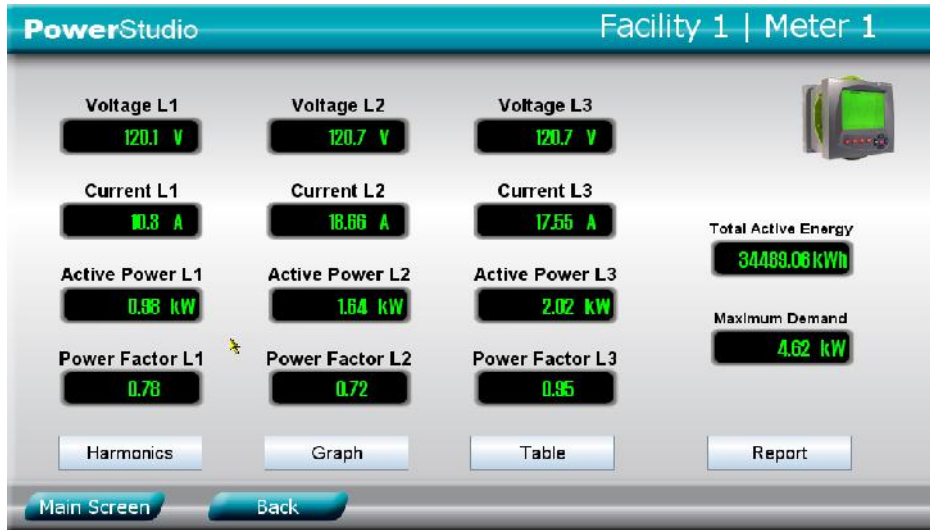
www.measurlogic.com

What can you Monitor ?

- Utilities
 - electrical energy
 - water
 - gas
- Solar systems
 - AC & DC measurements
- Other
 - Weather data
 - steam

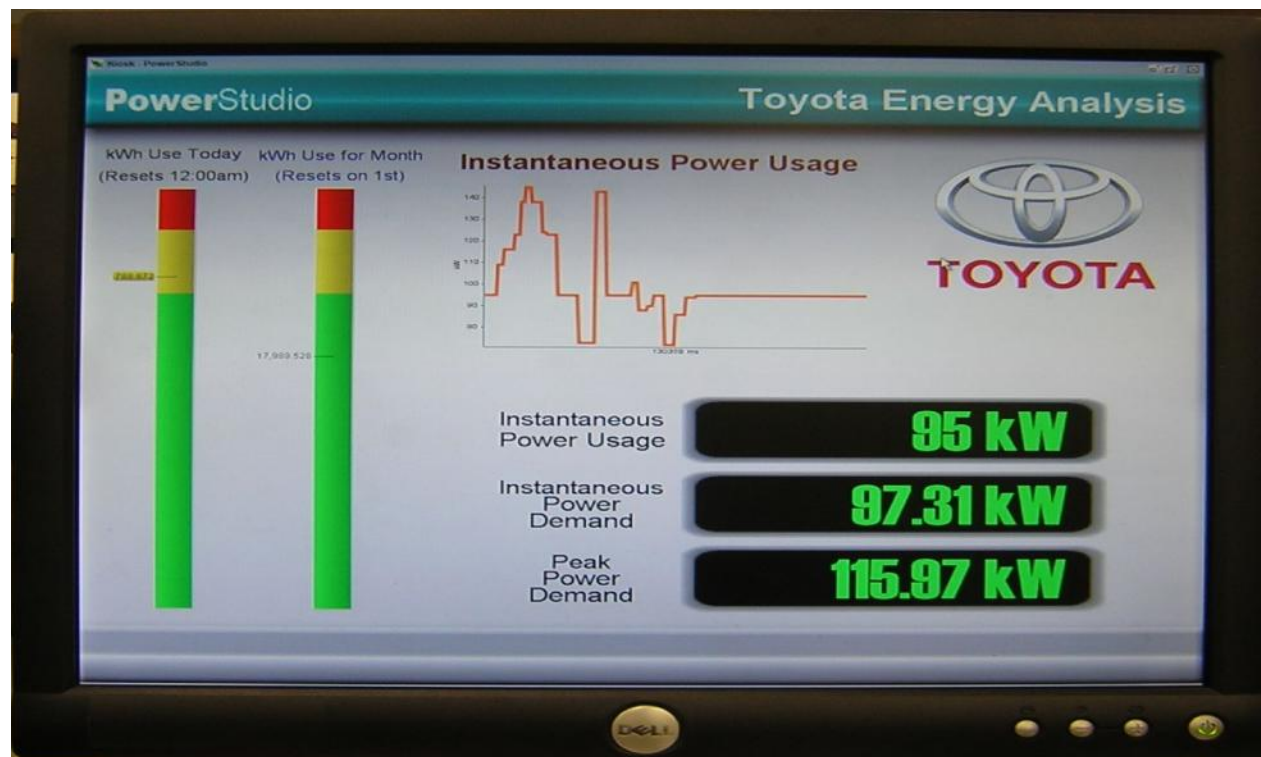


Real-time data, Reports and Graphs



Kiosk / Information Monitors

Customizable Kiosks and/or informational flat screen monitors are ideal ways to inform customers and/or employees of performance targets and energy reduction goals achieved



Contact Details

Toll-free	+1 (877) PQ-SOLNS (777-6567)
Telephone	+1 (303) 805 5252
Facsimile	+1 (425) 799 4780
e-mail	john@measurlogic.com
Website	www.measurlogic.com
Mailing Address	7334 S. Alton Way, Suite 14M Centennial, CO 80112



www.measurlogic.com