

# ImperviTRAN®



**ImperviTRAN®** is the ultra-reliable industrial control circuit transformer and the most accepted transformer in the industry. Behind its clean design is a toughness that makes it measure up to any requirement placed upon it. ImperviTRAN transformers carry Micron's 20-year warranty.

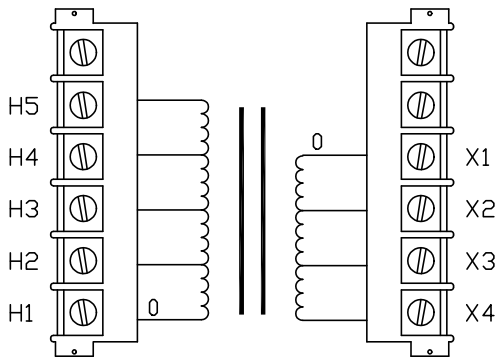
- Epoxy encapsulated coils
- 20-year warranty, double the industry standard
- Secondary fuse clips where applicable
- Optional primary fusing
- Molded terminal barriers
- 10-32 screw terminals
- Molded-in terminals
- Phil-slot screws



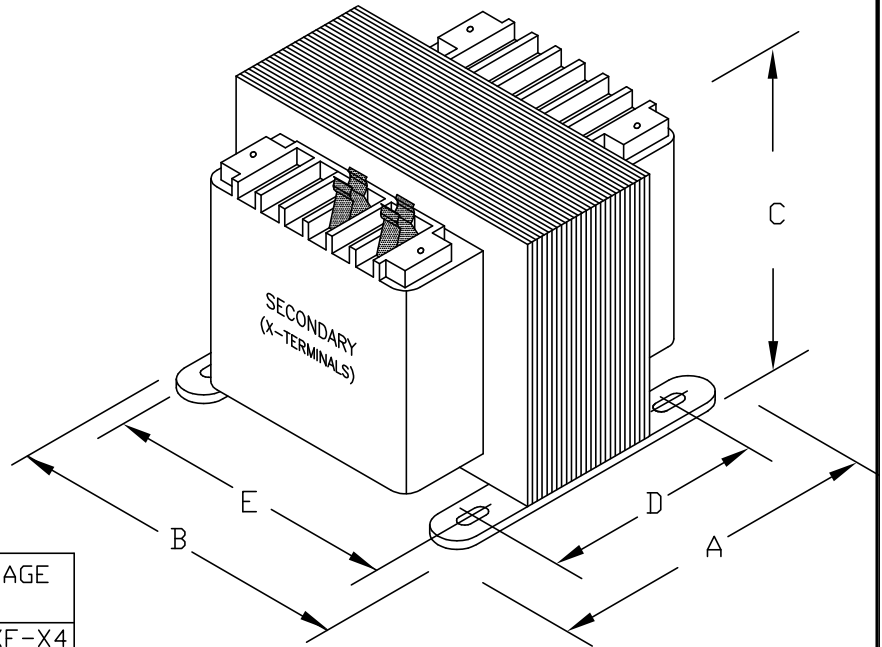
If you have any questions or we can be of any assistance in helping you determine your transformer requirements, please call our Technical Support Group at:

**1-800-664-4660**





CONNECTION DIAGRAM



CONNECTION TABLE

| INPUT VOLTAGE |       |       |       | OUTPUT VOLTAGE (FUSED) |       |       |
|---------------|-------|-------|-------|------------------------|-------|-------|
| H1-H2         | H1-H3 | H1-H4 | H1-H5 | XF-X2                  | XF-X3 | XF-X4 |
| 208           |       |       | 500   | 85                     | 100   | 110   |
| 220           | 380   | 440   | 550   | 91                     | 110   | 120   |
| 230           | 400   | 460   | 575   | 95                     | 115   | 125   |
| 240           | 416   | 480   | 600   | 99                     | 120   | 130   |

PROVIDED WITH SECONDARY FUSE CLIPS FOR 13/32 X 1 1/2 FUSE. PRIMARY JUMPERS NOT APPLICABLE.

SECOND FUSE CLIPS ADD MAXIMUM OF .5" TO THE "C" DIMENSION.

DIMENSIONS

APPROX. WT.  
LBS  
(KG)

|        | A     | B     | C    | D     | E    | MTG. SLOTS  |       |
|--------|-------|-------|------|-------|------|-------------|-------|
| INCHES | 5.88  | 4.50  | 3.82 | 4.72  | 3.75 | 0.203X0.460 | 14.7  |
| (MM)   | (149) | (114) | (97) | (120) | (95) | (5.1X11.7)  | (6.7) |



MICRON INDUSTRIES CORPORATION

777 CHURCH ROAD - ELMHURST, IL 60126  
Tel. (800) 664-4660, (630) 516-1222 Fax (630) 516-1820  
www.MicronTransformers.com

CAT.NO. **B250-0485-1**

CONST. **ENCAPSULATED**

CATALOG GROUP **L**

MODEL **IMPERVITRAN**

UL LISTED

RATING

SF CERTIFIED

| OUTPUT AMPS | 1.92 | PRIMARY V   | 240/416/480/600, 230/400/460/575, 220/380/440/550, 208/500 | TEMP. CLASS | HZ                |
|-------------|------|-------------|--|-------------|-------------------|
| VA          | 250  | SECONDARY V | 99/120/130, 95/115/125, 91/110/120, 85/100/110             | 105°C       | 50/60             |
|             |      |             |  |             | REVISION <b>G</b> |