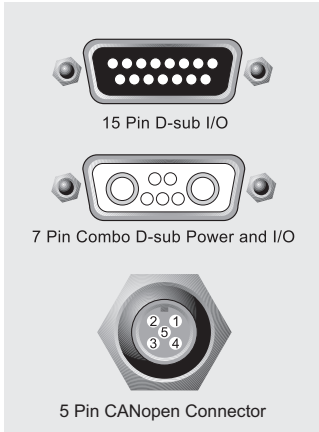


CANopen



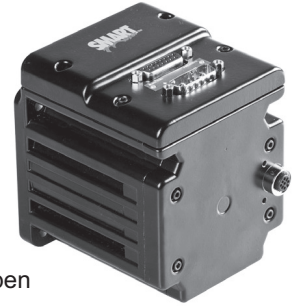
CANopen Pinout:

- 1 Not Connected
- 2 Not Connected
- 3 CAN ground
- 4 CAN H
- 5 CAN L

Animatics CANopen SmartMotor™

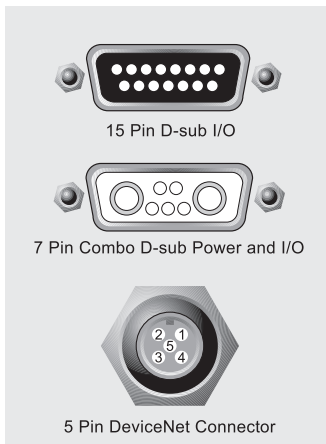
Features Include:

- All basic Motion commands available via CiA V4.02 specification
- Ability to read/write all SmartMotor variables
- Use of onboard I/O via CANopen Gateway, SmartMotor program, or RS232 commands
- Ability to run 1000 SmartMotor subroutines via CANopen
- Online diagnostics of the SmartMotor™ via SMI2 software and RS232 connection
- Up to 127 nodes
- 250 micro second interrupt driven subroutine
- Baud Rates: 20K, 50K, 125K, 250K, 500K, 1Mbps default 125Kbps



Note: This option DOES NOT apply to all Models, please see comparison chart on center foldout for availability.

DeviceNet™



DeviceNet Pinout:

- 1 Not Connected
- 2 +24V
- 3 Common
- 4 CAN H
- 5 CAN L



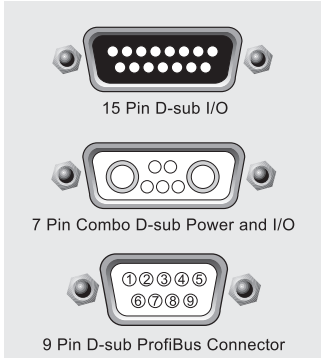
Animatics DeviceNet SmartMotor™

Features Include:

- Polled I/O and Explicit Messages from your PLC to control all SmartMotor™ operation
- Read/Write control over all ODVA Position Controller parameters
- Use of onboard I/O via DeviceNet, SmartMotor™ program, or RS232 commands
- Ability to run 1000 SmartMotor subroutines via DeviceNet and read/write four 32-bit user variables
- Online diagnostics of the SmartMotors via SMI2 software and RS232 connection
- Up to 64 DeviceNet nodes
- 250 micro second interrupt driven subroutine
- Baud Rates: 125K, 250K, 500K, 1Mbps default 125Kbps



Note: This option DOES NOT apply to all Models, please see comparison chart on center foldout for availability.



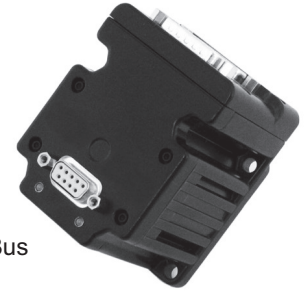
Profibus Pinout:

1	NC	6	+5V
2	NC	7	NC
3	BUS-B	8	BUS-A
4	NC	9	NC
5	ground		

Animatics Profibus SmartMotor™

Features Include:

- Command/Response Codes for all Class 5 SmartMotor commands
- Use of onboard I/O via Profibus, SmartMotor program, or RS232 commands
- Ability to run 1000 SmartMotor™ subroutines via Profibus
- Ability to read/write all SmartMotor variables
- Online diagnostics of the SmartMotors via SMI2 software and RS232 connection
- Up to 127 Profibus nodes
- 250 micro second interrupt driven subroutine
- Baud Rates: default 1.5Mbps
9.6, 19.2, 31.25, 45.45, 93.75, 187.5, 500 kbps,
1.5, 3, 6, 12 Mbps



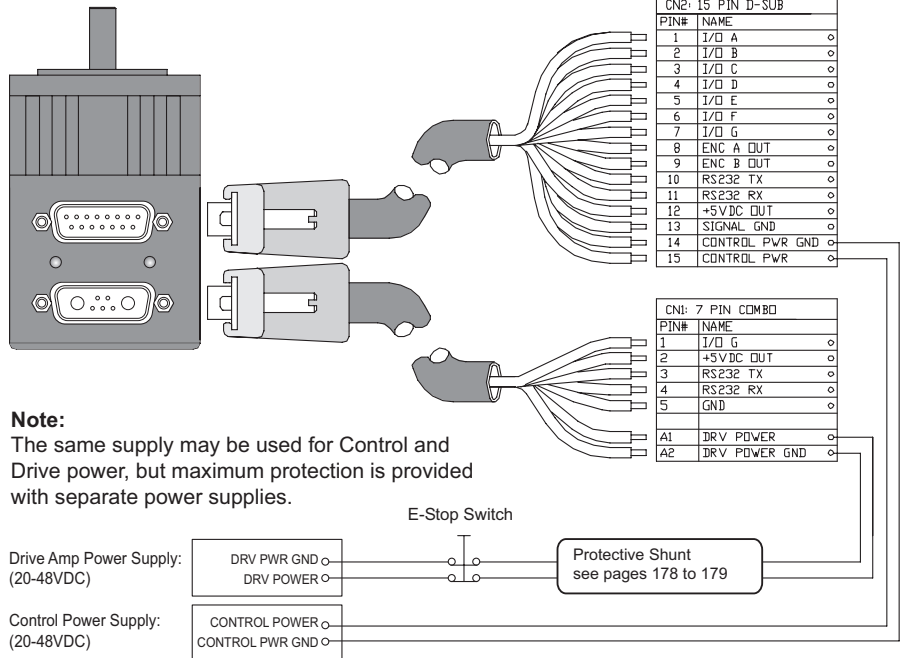
Note: Profibus baud rates are achievable only with proper cable length and termination connectors. The minimum cable length when operating ≥ 1 MBaud is 1 meter (3 feet). If the cable is too short, reflected impedance can cause loss of communications data packets and spurious node errors.

HIGHLY RECOMMENDED OPTION. PLEASE READ!

Hardware "DE" Option:

The DE option allows the controller and drive-amplifier to be powered from separate 24-48 VDC power supplies.

- Controller can be powered from a standard 24 VDC supply
- **Position will not be lost on loss-of-drive-power**
- **No need to re-home**
- Load surges will not cause power surge on controller
- Standard battery options are made simpler



Note: All IP sealed SmartMotors are designed to always have separate drive and control power. As a result, no DE designation is available for IP sealed SmartMotors. Control power on IP sealed SmartMotors is rated for 24VDC, maximum of 32VDC.