

OVERVIEW

MOTOR SPECIFICATIONS

LINEAR SYSTEMS

CONNECTIVITY

PERIPHERALS

IP 65 MODELS &amp; CONNECTIVITY

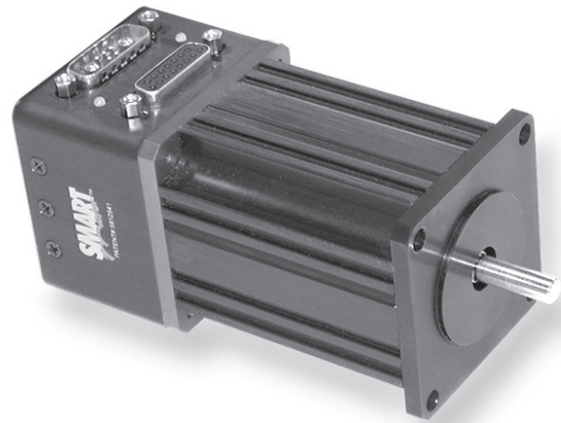
POWER SUPPLIES &amp; SHUNTS

GEAR HEADS

SOFTWARE

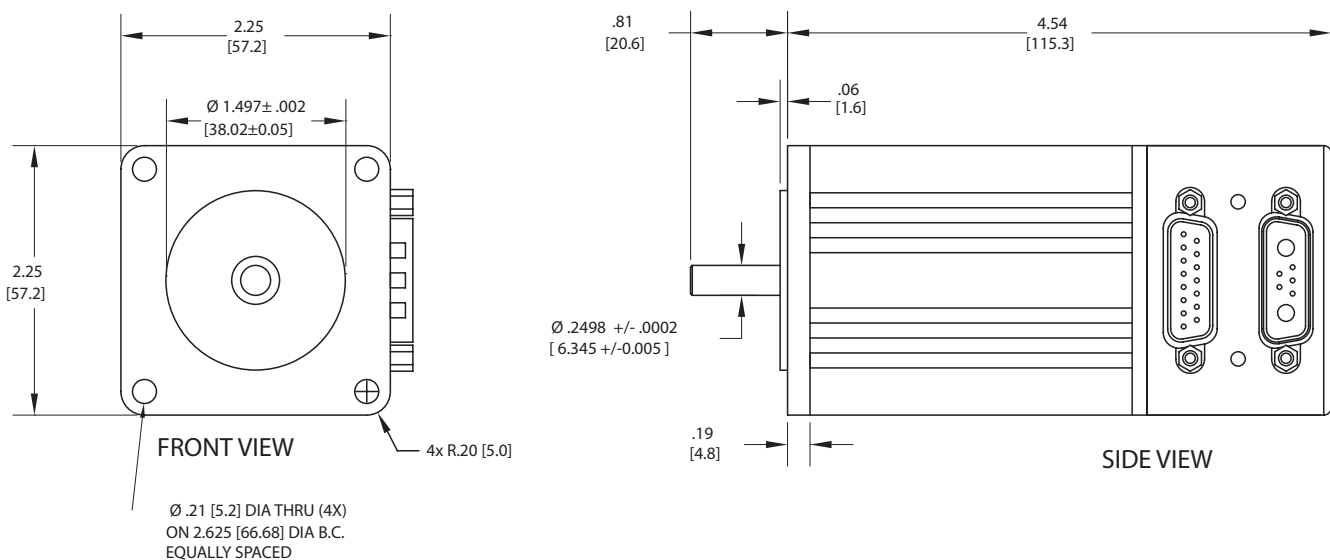
APPENDIX

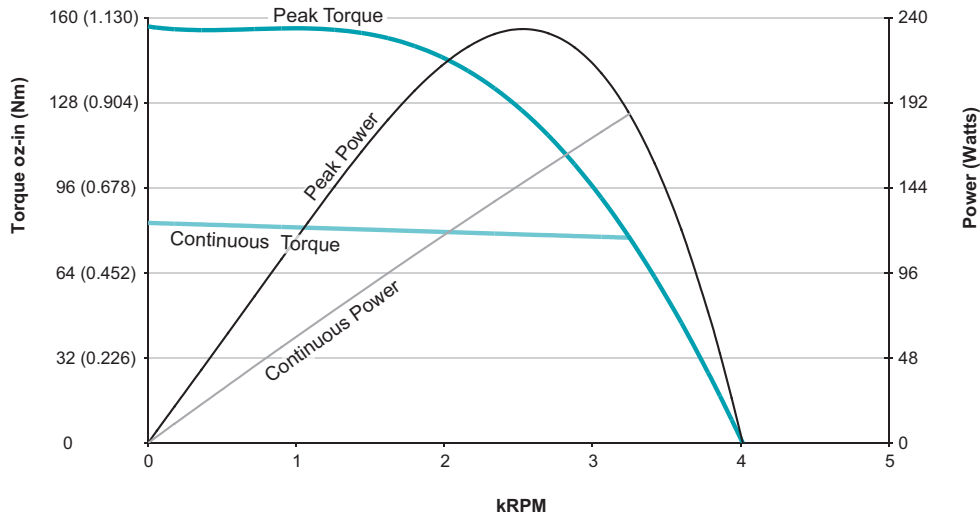
SM23375DT		
Continuous Torque	5.18	in-lb
	83	oz-in
	0.59	N-m
Peak Torque	9.80	in-lb
	157	oz-in
	1.11	N-m
Nominal Continuous Power	186	Watt
No Load Speed	4,000	RPM
Continuous Current @ Nominal Power	5.9	Amps
Voltage Constant	10.95	V/kRPM
Winding Resistance	0.9	ohms
Encoder Resolution	4,000	Counts/Rev
Rotor Inertia	0.0019	oz-in-sec <sup>2</sup>
	1.342	10 <sup>-5</sup> Kg-m <sup>2</sup>
Weight	2.2	lb
	0.98	kg
Shaft Diameter	0.250	in
	6.35	mm
Shaft, Radial Load	7	lb
	3.18	kg
Shaft, Axial Thrust Load	3	lb
	1.36	kg
DeviceNet Available	Yes	
ProfiBus Available		
CANopen Available	Yes	



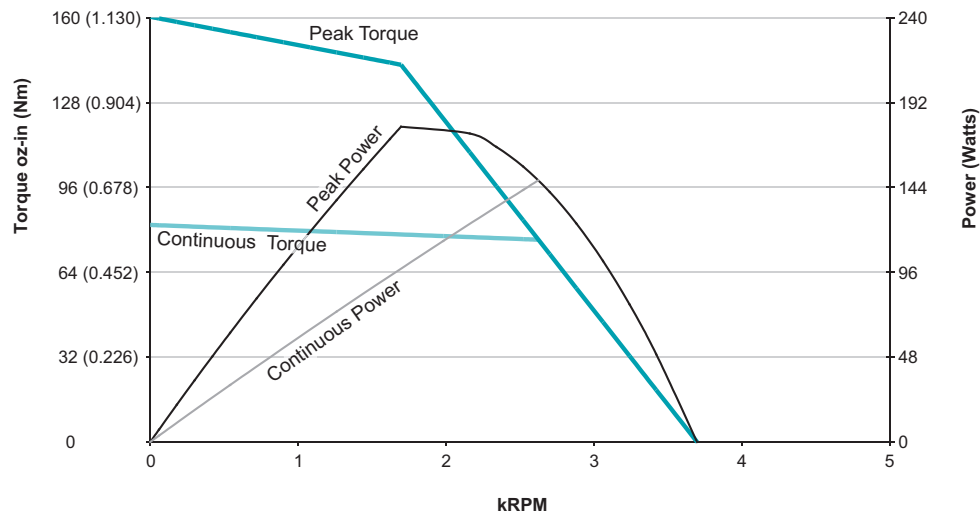
## Animatics SmartMotor SM23375DT (No Options) CAD Drawing

in [mm]

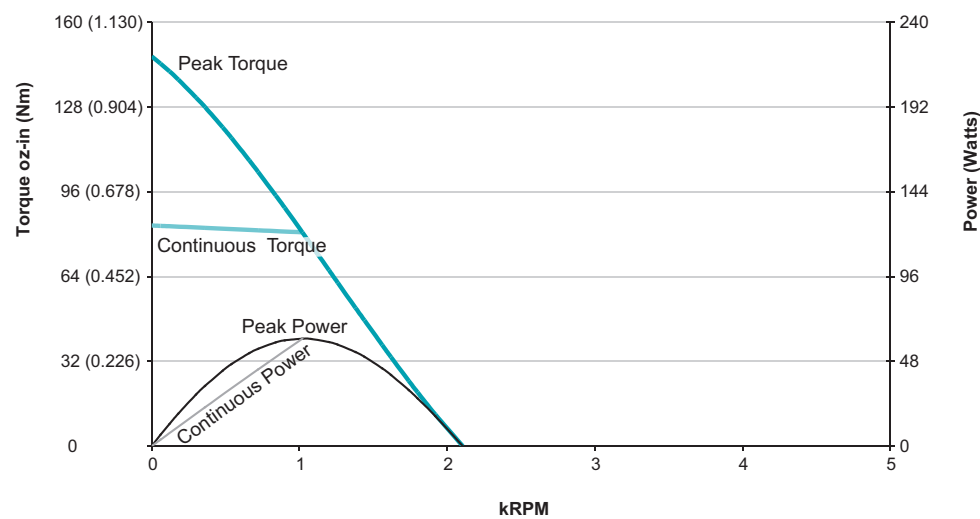




**SM23375DT**  
**at 48 VDC**  
**at rise to 85°C**



**SM23375DT**  
**at 42 VDC**  
**at rise to 85°C**



**SM23375DT**  
**at 24 VDC**  
**at rise to 85°C**