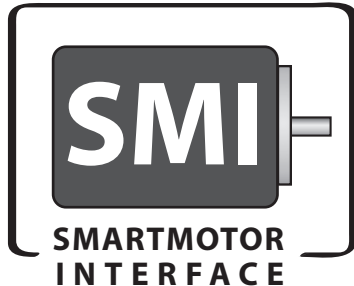
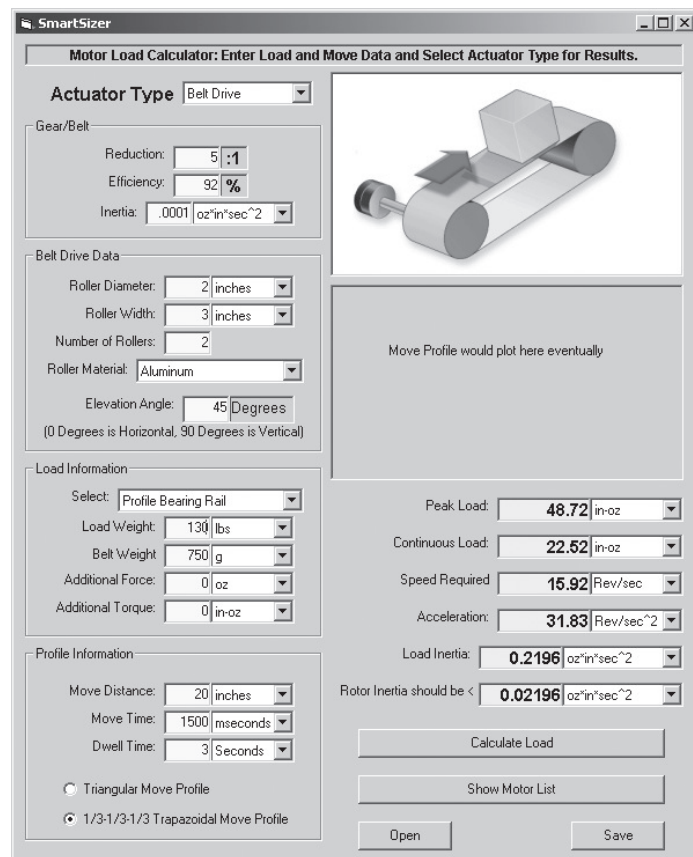


Animatics SmartMotor Software

SMI (SmartMotor Interface) is used for communicating with SmartMotor servos and developing downloadable code and SMI includes many tools for diagnostics.



Animatics recently introduced **SmartSizer™**, a new load sizing software tool to aid in SmartMotor selection for any given load.



In one simple, single page format, the tool allows the user to fill in values to calculate load torque imposed on a given motor. All input data has a drop down unit selection, allowing you to easily mix and match standard and metric units together.

SMNC (SmartMotor Numerical Control) is a CNC based package that has been upgraded to interface with newer Class 5 SmartMotor servos over CANopen CIA 402 IP (Interpolation protocol).



With Class 5 SmartMotor servos and 1MB bandwidth CANopen interfacing, SmartMotor position data packets may be updated at sub-millisecond rates allowing Class 5 SmartMotor servos to be used in high speed CNC systems such as laser engraving and micro machining.



SMI Engine The SMI Engine is a .dll file that comes free with any SMI software download and install and is an active support tool for C and VB programmers. The IntegMotorInterface.dll file may be used with Microsoft, Borland, Python and other compilers as well as used as an Active X add-in in Labview.

