

V481

WinCE User's Manual

Fifth Edition, January 2010

www.moxa.com/product

MOXA®

© 2010 Moxa Inc. All rights reserved.
Reproduction without permission is prohibited.

V481

WinCE User's Manual

The software described in this manual is furnished under a license agreement and may be used only in accordance with the terms of that agreement.

Copyright Notice

Copyright © 2010 Moxa Inc.
All rights reserved.
Reproduction without permission is prohibited.

Trademarks

MOXA is a registered trademark of Moxa Inc.
All other trademarks or registered marks in this manual belong to their respective manufacturers.

Disclaimer

Information in this document is subject to change without notice and does not represent a commitment on the part of Moxa.

Moxa provides this document “as is,” without warranty of any kind, either expressed or implied, including, but not limited to, its particular purpose. Moxa reserves the right to make improvements and/or changes to this manual, or to the products and/or the programs described in this manual, at any time.

Information provided in this manual is intended to be accurate and reliable. However, Moxa assumes no responsibility for its use, or for any infringements on the rights of third parties that may result from its use. This product might include unintentional technical or typographical errors. Changes are periodically made to the information herein to correct such errors, and these changes are incorporated into new editions of the publication.

Technical Support Contact Information

www.moxa.com/support

Moxa Americas:

Toll-free: 1-888-669-2872
Tel: +1-714-528-6777
Fax: +1-714-528-6778

Moxa Europe:

Tel: +49-89-3 70 03 99-0
Fax: +49-89-3 70 03 99-99

Moxa Asia-Pacific:

Tel: +886-2-8919-1230
Fax: +886-2-8919-1231

Moxa China (Beijing office):

Tel: +86-10-6872-3959/60/61
Fax: +86-10-6872-3958

Table of Contents

Chapter 1	Introduction	1-1
	Overview	1-2
	Software Features	1-2
	Application Development Environment.....	1-2
	Networking and Communications Capabilities.....	1-3
	Supported Servers and Daemons	1-3
	Graphics and Multimedia Tools.....	1-4
	How to Determine the Firmware Build Version.....	1-5
	Memory and File Systems	1-5
	Hive-Based Registry.....	1-5
	Inserting a USB Mass Storage Device into the Computer.....	1-6
	Inserting a CompactFlash into the Computer	1-6
	Eight RS-232/422/485 Serial Ports.....	1-6
Chapter 2	Getting Started.....	2-1
	Starting Your V481 Computer	2-2
	Resetting Your V481 Computer	2-3
	Changing the Network Settings.....	2-3
	Using the Windows CE Network Utility to Configure Network Settings.....	2-4
	Using the Command Line to Configure Network Settings	2-4
	Operating Your V481 Computer from a Telnet Client.....	2-5
	User/Group Management	2-6
	System Time and Time Zone.....	2-7
	Starting and Stopping Services.....	2-7
	Troubleshooting Network Connectivity	2-8
	Simple Network Management Protocol (SNMP)	2-9
	Inserting a USB Mass Storage Device into the Computer.....	2-9
	Inserting a Compact Flash Card Storage into a V481 Computer.....	2-9
	Inserting a Hard Disk Drive into a V481 Computer	2-10
Chapter 3	Management Tools	3-1
	Before Operating the System.....	3-2
	System Information	3-2
	Process (Thread) Monitoring/Control.....	3-3
	Services Monitoring/Control	3-4
	Serial Port Configuration.....	3-5
	Display.....	3-6
	Auto Launch Configuration.....	3-7
	User/Group Management	3-8
	Web Server Configuration.....	3-10
Chapter 4	System Recovery	4-1
	Recovery Environment	4-2
	Hardware	4-2
	Recovery Programs	4-2
	Recovery Procedure.....	4-2
Chapter 5	Firmware Upgrade Procedure	5-1

The V481 is an industrial, ready-to-run embedded computer that supports VGA and audio. The computer comes with dual LAN ports, 8 serial ports, 2 CompactFlash slots, and 2 USB ports, and is based on the Intel x86 processor. With its VGA interface, the V481 is especially well suited for industrial applications, such as SCADA, factory automation, and other applications that require an onsite HMI or visual monitoring capability.

The V481's 8 built-in, software-selectable RS-232/422/485 serial ports make it an ideal solution for connecting to different devices. The dual LAN ports offer a reliable solution for network redundancy by providing continuous operation for data communication and management. In addition, the second CompactFlash socket makes it easier to add storage space, and the USB ports can connect to a wide range of devices, making the V481 a reliable embedded computer for industrial applications that require VGA and HMI features.

The V481 comes pre-installed with the Windows CE 5.0 operation system, providing programmers with a friendly environment for developing application software. V481 programmers have an added advantage in that Moxa provides good software support to reduce the cost and time required for software development. For hardware specifications, please refer to Hardware User's Manual.

In this chapter, we cover the following topics:

- ❑ **Overview**
- ❑ **Software Features**
 - Application Development Environment
 - Networking and Communications Capabilities
 - Supported Servers and Daemons
 - Graphics and Multimedia Tools
- ❑ **How to Determine the Firmware Build Version**
- ❑ **Memory and File Systems**
- ❑ **Hive-Based Registry**
- ❑ **Inserting a USB Mass Storage Device into the Computer**
- ❑ **Inserting a CompactFlash into the Computer**
- ❑ **Eight RS-232/422/485 Serial Ports**

Overview

The V481 Series of x86 ready-to-run embedded computers is designed around the Intel Celeron M 1 GHz processor. In addition to the usual computer peripherals, the V481 integrates one 10/100 LAN port, one Gigabit LAN port, and 8 RS-232/422/485 serial ports, making the V481 into an ideal industrial embedded computer for handling industrial communication applications that need to connect to a monitor or HMI onsite.

The on-board CompactFlash and DDR SDRAM provide ample storage capacity, and the second CompactFlash socket allows users to install additional memory.

The Windows-based operating system comes pre-installed and ready-to-run, providing a Windows-like environment for easy software development. Software written for desktop PCs is easily ported to the V481 using a common compiler, which means that programmers do not need to spend a lot of time modifying existing software code. In addition, the operating system, device drivers, and user-developed software can all be stored in the pre-installed CompactFlash memory Card.

Software Features

The V481 Series of x86 ready-to-run embedded computers is designed around the Intel Celeron M 1 GHz processor. In addition to the usual computer peripherals, the V481 integrates one 10/100 LAN port, one gigabit LAN port, and 8 RS-232/422/485 serial ports, making the V481 into an ideal industrial embedded computer for handling industrial communication applications that need to connect to a monitor or HMI onsite.

The V481's VGA interface makes it a good choice for the industrial applications, such as SCADA and factory automation. The V481 features the Microsoft® Windows® CE 5.0 operating system (OS). Developers of embedded communication applications will find that the open programming environment makes the V481 well-suited for both new system development and migrating legacy systems.

Application Development Environment

The Windows CE 5.0 environment provides the following common, popular application development features that make programming just as convenient and easy as a PC environment.

- **C Libraries and Run-times**—The C libraries and run-times on a V481 WinCE are a subset of the WIN32 APIs. The system supports a full ANSI C run-time, standard input/output library, standard input/output ASCII library, and standard ASCII string functions. In addition, compiler C++ exception handling and Run-Time Type Information (RTTI) equivalent to desktop C++ compilers are supported.
- **Component Services (COM and DCOM)**—The Common Object Model (COM) is an operating system-independent, object-oriented system for creating binary software components that can interact with other COM-based components in the same process space, in other processes, or on remote machines.
- **Microsoft® Foundation Classes (MFC)**—MFC is a comprehensive class library and complete object-oriented application framework designed to help build applications, COM components, and controls.
- **SOAP Toolkit**—SOAP is an XML-based protocol for object exchange and calling remote procedures. Microsoft® Windows® CE 5.0 provides functionality similar to the SOAP Toolkit version 2 on the desktop. It provides a layer that allows COM objects to use SOAP as the transport protocol for remote procedure calls and to interact with Web services.

- **Microsoft® .NET Compact Framework 2.0**—Offers a choice of languages, initially Microsoft® Visual Basic® and Microsoft® Visual C#, and eliminates the common problems faced with language interoperability.
- **XML**—Provides the Document Object Model (DOM) for basic XML functionality, support for XML Query Language (XQL) and XPATH, Extensible Style Sheet Language Transformations (XSLT) that enable you to transform one class of XML document to another, SAX2 support for event-based parsing of XML documents (including MSXML Writer), and parsing based on Simple API for XML (SAX) for resource-constrained target devices.

Networking and Communications Capabilities

For network-centric embedded application usage, the V481 provides powerful communication hardware interfaces that include dual Ethernet and 8 serial ports, and also supports the networking and communications capabilities that are built into the Windows CE5.0 OS. The following features are supported:

- **Simple Network Management Protocol (SNMP)**—Monitors remote connections to the network.
- **Simple Network Time Protocol (SNTP) Client**—Provides support for synchronizing the device's system time with a SNTP server, and supports Daylight Saving Time.
- **Simple Mail Transfer Protocol (Client)**—A protocol for sending e-mail messages between servers.
- **Serial Communications**—In addition to the 16550 UART driver bound to a debug port and the console port, a special driver for 8 or 16 additional Moxa home-made serial ports is also included.
- **Network Utilities (IpConfig, Ping, Route)**—Utilities for troubleshooting various network problems.
- **TCP/IP**—Includes IP, Address Resolution (ARP), Internet Control Message (ICMP), Internet Group Membership (IGMP), Transmission Control (TCP), User Datagram (UDP), name resolution and registration, DNS Client and DHCP.
- **Dial-up Networking**—Consists of RAS client API and the Point to Point Protocol (PPP). RAS and PPP support Extensible Authentication Protocol (EAP) and RAS scripting
- **PPPoE**—Point-to-Point Protocol over Ethernet (PPPoE) provides the ability to connect a network of hosts, over a simple bridging access device, to a Remote Access Concentrator.

Supported Servers and Daemons

In addition to the development and communication capability, the services and daemons listed below are also embedded in the V481. These common and easy-to-use application services help users migrate industrial communication applications to the V481 embedded computer easily and conveniently.

- **FTP Server**—A sample server used for transferring files to and from remote computer systems over a network using TCP/IP.
- **Web Server (IIS)**—Includes ASP, ISAPI, and Web Administration ISAPI Extensions.
- **SQL Express**—SQL Server 2005 Express Edition is the next version of MSDE and is a free, easy-to-use, lightweight, and embeddable version of SQL Server 2005.
- **Watchdog Service**—A CPU hardware function for resetting the CPU in a user specified time interval. You must call a Moxa library function to implement this service.

Graphics and Multimedia Tools

The V481 embeds high-performance multimedia technologies found on desktop computers. These technologies provide the V481 with a friendly graphical user interface, and support waveform audio playback and capture.

- **Graphics Device Interface (GDI)**—Provides information about the fundamental graphics architecture for Windows CE.
- **Direct3D Mobile Display Drivers**—Provides information about creating a display driver that supports Direct3D Mobile.
- **DirectDraw Display Drivers**—Provides information about creating a display driver that supports DirectDraw.
- **Audio Codecs and Renderers**—Provides the following Codecs

G.711 Audio Codec
GSM 6.10 Audio Codec
IMA ADPCM Audio Codec
MP3 Codec
MPEG-I Layer 1 and 2 Audio Codec
MS ADPCM Audio Codec
Wave/AIFF/au/snd File Parser
Waveform Audio Renderer
WMA Codec
WMA Voice Codec
WMAPro over s/PDIF Packetizer

- **Video Codecs and Renderers**—Provides the following Codecs

DirectShow Video Codec
MPEG-I Video Codec
MS RLE Video Codec
Overlay Mixer
Video/Image Compression Manager
EMA/MEPG-4 Video Codec

How to Determine the Firmware Build Version

There are two ways to determine the firmware version of the V481 embedded computer. This information is important for identifying which features are supported.

- Look at the welcome message after you log on to the computer.
- Execute the “System Manager” application (described in a later chapter) to view the system information.

Memory and File Systems

The 256 MB of SDRAM is divided into the main memory, which uses about 196 MB of space and includes the operating system and user applications, and the kernel image, which occupies the rest of the space.

The V481's internal file system controls access to CF flash and also provides file storage in the object store. The file system provides persistent storage for applications and their related data even when the main power supply is lost. The file system integrates the read-only files that are stored in Flash ROM, with the read/write files of both applications and users.

The system provides 1 MB of RAM-based storage under the RAMDisk directory. Although data saved in RAM will be deleted when the system shuts down, RAM storage has the advantages of faster read/write access and no life cycle. For applications that require transmitting important data immediately and directly to a host, you can store the necessary log data in RAM. After the host receives the data, the data does not need to be retained and can be deleted.

Since embedded computers have resource limits, integrators must store data wisely. In general, you should only store data when you need to, and you should be sure to use the most appropriate storage medium.

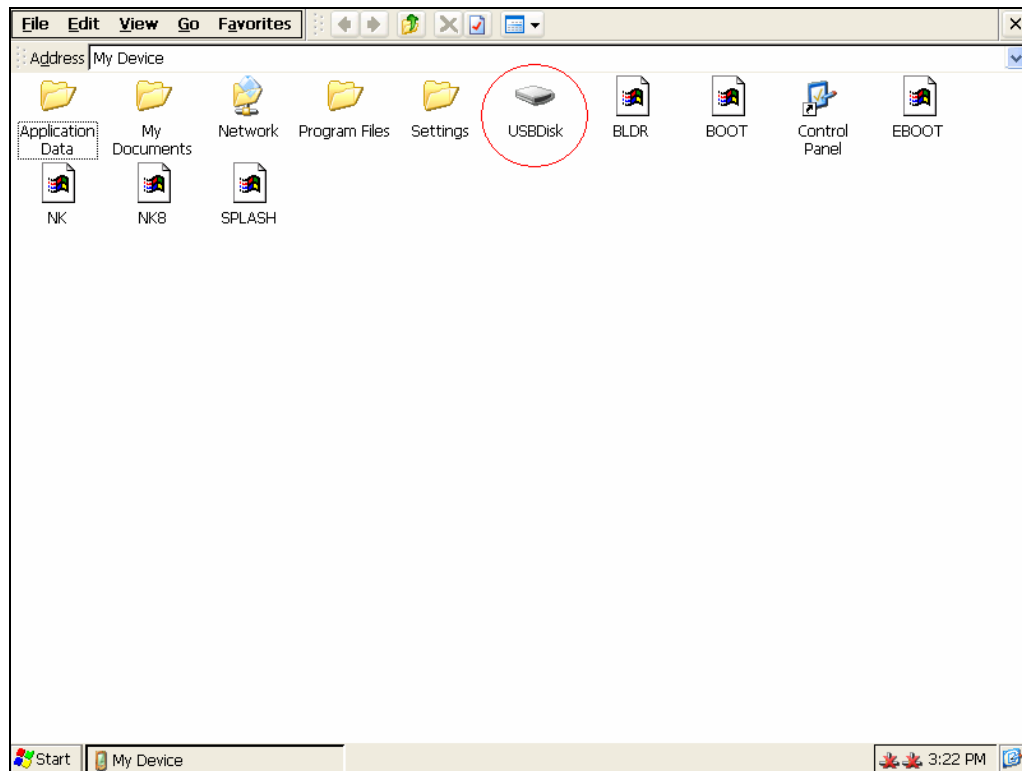
Additional file systems for USB storage devices are placed at the root of the internal file system. If you intend to use the devices to port data between your PC and the V481 computer, you should format them as the FAT file system on your PC. These devices need to be formatted as FAT. Otherwise, the V481 computer may not recognize the NTFS or any other format.

Hive-Based Registry

The registry for the V481 is a hive-based registry, instead of a RAM-based registry. The hive-based registry stores registry data inside files, or hives, which can be kept on file system. This removes the need for performing backup and restore on power off. The registry data is stored in the “\ Registry” directory.

Inserting a USB Mass Storage Device into the Computer

USB mass storage devices are useful for porting data between your PC and the V481 computer. We suggest that you format your devices with the FAT format. When the first USB storage device is plugged into the V481, a directory named "USBDisk" under the root directory is created as a link to the storage, on the internal file system. The directory created for the second USB device is "USBDisk2."



Inserting a CompactFlash into the Computer

The V481 has a type II CompactFlash slot that supports cards of both types I and II. A mass storage card is considered to be secondary storage for the computer. When a mass storage card is inserted, the V481 creates a directory named "HardDisk" under the root directory, and the newly created directory serves a link to the storage space.

Eight RS-232/422/485 Serial Ports

The V481's serial ports are numbered from left to right and bottom using the names: COM1, COM2, ..., COM8. The serial ports are reliable, operate at speeds up to 921600 bps, and support the RS-232, RS-422, and RS-485 interfaces.

2

Getting Started

In this chapter, we explain how to operate a V481 computer from a PC. For clarity, the PC will be referred to as a “development workstation,” and the V481 embedded computer will be called a “target computer.”

In addition, we give steps for facilitating operations such as system time adjustment, troubleshooting network connectivity, etc. Some of these operations can be done with system commands after gaining access to the computer, and others can be done by a “System Manager” application, which is described in a later chapter.

The following topics are covered in this chapter:

- Starting Your V481 Computer**
- Resetting Your V481 Computer**
- Changing the Network Settings**
 - Using the Windows CE Network Utility to Configure Network Settings
 - Using the Command Line to Configure Network Settings
- Operating Your V481 Computer from a Telnet Client**
- User/Group Management**
- System Time and Time Zone**
- Starting and Stopping Services**
- Troubleshooting Network Connectivity**
- Simple Network Management Protocol (SNMP)**
- Inserting a USB Mass Storage Device into the Computer**
- Inserting a Compact Flash Card Storage into a V481 Computer**
- Inserting a Hard Disk Drive into a V481 Computer**

Starting Your V481 Computer

Connect the CRT monitor or LCD monitor to the target computer, and then power it on by connecting it to the power adaptor. It takes about 30 to 40 seconds for the system to boot up. During the boot process, you will see the following startup screen with a progress bar.



Once the system is ready, the Windows CE desktop window will appear.



Resetting Your V481 Computer

Reset button

It may be necessary to reset the system if the computer stops responding or an application locks up. The reset button is located on the V481's outer casing. After pressing the "Reset" button, the computer will boot up automatically.

Reset to factory default

The V481 embedded computer is based on Windows CE 5.0 and uses a CompactFlash card for the internal file system. The WinCE 5.0 supports the FAT file system.

If you find that files, directories, or the FAT table are damaged because of an unstable power supply or application issues, then you will need to reset to factory defaults. To do this, power on the V481 computer, and then press "8" when you see the Windows CE startup screen. System prompts will guide you through the step-by-step reset procedure.

Step1: Scan Disk (Automatically)

The system will scan the disk automatically when you start the reset procedure.

Step2: Are you sure you want to reset the system configuration to default values? (Y/N)

After the disk scan is complete, the system will ask you to confirm that you want to reset to defaults. Press "Y" to reset to defaults. This will revert all settings to the factory default values.

Step3: Are you sure you want to delete all files and directories? (Y/N)

You will be asked whether you want to delete all files and directories. Press "Y" if you would like to delete all files in the "Program Files" directory.

Step4: Proceed? (Y/N)

You will be asked to confirm. Press "Y" to proceed to the reset process.

NOTE: After the disk scan finishes, you may find some files named "FILE00xx.chk," which means that some files or directories were damaged and have been fixed.

Changing the Network Settings

The V481 computer comes with two network interfaces. The default IP addresses and netmasks of the network interfaces are as follows:

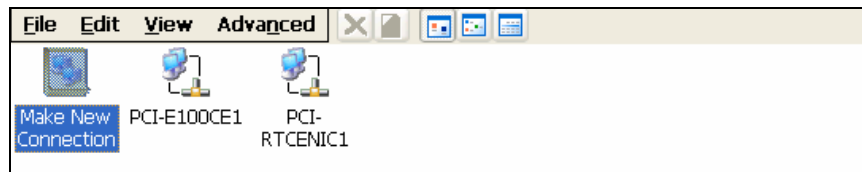
	Default IP Address	Netmask
LAN 1	192.168.3.127	255.255.255.0
LAN 2	192.168.4.127	255.255.255.0

There are two ways to change the network setting.

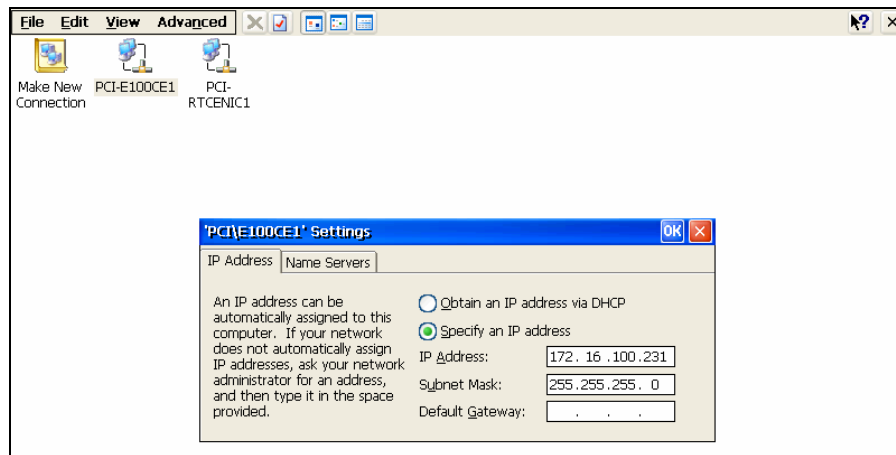
Using the Windows CE Network Utility to Configure Network Settings

Network interface settings can be configured with the Windows utility.

Step1: Go to [Start] → [Settings] → [Network and Dial-Up Connections]. You will see two network interfaces.



Step2: Right-Click the LAN interface (e.g., PCI\E100CE1) that you would like to configure and then click [property]. A configuration window will pop up.



Step3: Input the new IP address and netmask and then click **OK**.

Using the Command Line to Configure Network Settings

Use the *netconfig* utility to change network settings. Note that you can type *netconfig -h* to display the system's help content for this utility.

```
\> netconfig -h
```

```
Usage: netconfig -n <AdapterName | Alias> [-EnableDHCP] [-i <IP address>] [-m <netmask>]
      [-g <gateway>] [-d <DNS server>] [-w <WINS Server>] [-noask]
```

```
e.g.: netconfig -n PCI\E100CE1 -i 192.168.10.101 -g 192.168.10.254
      : netconfig -n PCI\RTCNIC1 -EnableDHCP
```

Alias:

```
LAN1=PCI\E100CE1
LAN2=PCI\RTCNIC1
```

For example, if you want to change the IP address of the development workstation's LAN port to 192.168.1.5, and the Domain Name Server's (DNS) IP address is 192.168.2.6, then execute the following command:

```
\> netconfig -n LAN1 -i 192.168.1.5 -m 255.255.255.0 -g 192.168.1.254 -d 192.168.2.6
```

Use the command *netconfig* to view the new settings.

```
\> netconfig
```

```
LAN1 Interface Configuration:
```

```
IP Address: 192.168.1.5
```

```
SubNet Mask: 255.255.255.0
```

```
Gateway: 192.168.1.254
```

```
DNS: 192.168.2.6
```

```
LAN2 Interface Configuration:
```

```
IP Address: 192.168.4.127
```

```
SubNet Mask: 255.255.255.0
```

```
Gateway:
```

```
DNS:
```

Operating Your V481 Computer from a Telnet Client

Before operating your V481 computer from a Telnet client, we suggest that you change the network settings of the computer (see the previous section) so that at least one of the two network ports are on the same LAN as your development workstation.

Use a cross-over Ethernet cable to connect your development workstation directly to the target computer, or use a straight-through Ethernet cable to connect the computer to a LAN hub or switch. Next, use a Telnet client on your development workstation to connect to the Telnet console utility on the target computer. After establishing a connection, type the login name and password as requested to logon to the computer.

The default login name and password are both **admin**.

Login: admin

Password: admin

After logging in through the console port or Telnet client, you have several commands available to operate the computer. Type **HELP** to display all of the commands, or type **HELP [command name]** to display detailed help for a particular command. Some of these commands, such as **DATE** and **TIME**, are very useful and make it easy to manage the computer's system time. Other commands, such as **DIR** and **MKDIR**, are good utilities for file management. For example, to inspect the file structure of the root directory, type **DIR**

```
\> dir /b
```

```
Network
```

```
BLDR
```

```
SPLASH.BMX
```

```
EBOOT.BIX
```

```
BOOT.INI
```

```
NK.BIN
```

```
NK8.BIN
```

```
Settings
```

```
Program Files
```

```
My Documents
```

```
Application Data
```

User/Group Management

User Group: You should assign specific services, such as ftp and telnet, to define user groups such that these services are accessible only by the users within the permissible user group. Three user groups, namely “ftpd,” “telnetd,” and “httpd,” were created by default for your convenience.

Adding a Group: Use the command *useradd -g <groupName>* to create a user group.

```
\> useradd -g yyyy
group yyyy has been added.
```

Deleting a Group: To remove a group, use the command *userdel -g <groupName>*.

```
\> userdel -g yyyy
group yyyy has been removed.
```

Adding a User: Use the command *useradd <newUserID>* to add a user for accessing the system. The user's password, by default, is the same as the user name.

```
\> useradd xxxx
user xxxx has been added.
```

In addition, you can permit this user to access a particular service by typing *-g* followed by the user group name of the service, i.e., *useradd -g <groupName> <newUserID>*. For example,

```
\> useradd -g telnetd xxxx
user xxxx is existent
group telnetd is existent
user xxxx has been added to group yyyy
```

Deleting a User: Use the command *userdel <userID>* to delete a user from the system. The user “admin” CANNOT be deleted.

```
\> userdel xxxx
user xxxx has been deleted
```

You can also just remove a user from a user group by using the command *userdel -g <groupName> <newUserID>*. For example,

```
\> userdel -g yyyy xxxx
user xxxx has been removed from group yyyy
```

System Time and Time Zone

Setting the System Time Manually: Use the *date*, and *time* commands to query the current system date/time or to set a new system date/time. The system time is save in RTC. Stopping the system won't affect the system time.

```
\> date
The current date is: Tuesday, November 22, 2005
Enter the new date (mm-dd-[yy]yy): 12-23-05

\> date /T
Wednesday, November 23, 2005

\> time
The current time is: 5:27:17 PM
Enter the new time (hh:mm:ss): 16:02:00

\> time /T
4:02:04 PM
```

Setting the Time Zone: Windows CE 5.0 supports Time Zone. You can use [Control Panel] → [Date/Time] to adjust your current Time Zone. It also supports **Daylight Date** and **Daylight Time**.

Starting and Stopping Services

After booting up, the V481 computer runs several services continuously to serve requests from users or other programs. Notable services include telnet ("TELO:"), World Wide Web HTTP ("HTPO:"), and file transfer FTP ("FTP0:"). Most users will not use these services. However, you can start or stop a service by using the "services" command. For example,

Start the FTP service by typing

```
\> services start FTP0:
```

Stop the FTP service by typing

```
\> services stop FTP0:
```

The default services in the V481 are:

```
TELO:  Telnet Service
FTP0:  FTP Service
CON0:  Console Service
```


Troubleshooting Network Connectivity

The ipconfig tool prints the TCP/IP-related configuration data of a host, including the IP addresses, gateway, and DNS servers.

```
\> ipconfig /all
Windows IP configuration
Ethernet adapter Local Area Connection:
IP Address: 192.168.4.127
Subnet Mask: 255.255.255.0
Adapter Name: PCI\E100CE1
Description: PCI\E100CE1
Adapter Index: 2
Address: 80 86 33 33 34 12
DHCP Enabled: NO

Ethernet adapter Local Area Connection:
IP Address: 192.168.14.202
Subnet Mask: 255.255.248.0
Default Gateway: 192.168.15.254
Adapter Name: PCI\RTCENIC1
Description: PCI\RTCENIC1
Adapter Index: 3
Address: 78 56 34 91 cc dd
DHCP Enabled: NO

Host name: V481
Domain Name:
DNS Servers: 192.168.1.6
NODETYPE: 8
Routing Enabled: NO
Proxy Enabled: NO
```

To troubleshoot network connectivity, reach-ability, and name resolution, use the ping command. This command verifies IP-level connectivity to another TCP/IP computer by sending Internet Control Message Protocol (ICMP) Echo Request messages. The corresponding return Echo Reply messages are displayed, along with round-trip times. For more information, type ping without parameters.

```
\> ping www.Moxa.com
Pinging Host www.Moxa.com [192.168.1.16]
Reply from 192.168.1.16: Echo size=32 time<1ms TTL=126
Reply from 192.168.1.16: Echo size=32 time<1ms TTL=126
Reply from 192.168.1.16: Echo size=32 time<1ms TTL=126
```

The **route** utility allows you to view or modify network routing tables. Type this command without parameters to view a list of functions.

```
\> route
```

To view current routing items in the tables,

```
\> route PRINT
```

To add a routing item on network interface 1,

```
\> route ADD 192.168.0.0 MASK 255.255.0.0 192.168.15.254
```

To delete a routing item,

```
\> route DELETE 192.168.0.0
```

Simple Network Management Protocol (SNMP)

SNMP is the standard Internet protocol for network management, and is one part of the TCP/IP protocol suite. SNMP was developed to monitor and manage networks. It uses a distributed architecture that consists of agents and managers:

SNMP agent

The SNMP agent is an SNMP application that monitors network traffic and responds to queries from SNMP manager applications. The agent also notifies the manager, by sending a trap, when significant events occur.

SNMP Manager

An SNMP manager is an SNMP application that generates queries to SNMP-agent applications and receives traps from SNMP-agent applications.

The V481 computer installs an SNMP agent to serve as an SNMP device. You should install the SNMP manager on the workstation computer (for example, a Linux system) that monitors the network. After installing the nodes, you need to configure the SNMP manager and agent.

To check SNMP agent capabilities in a target V481 computer (e.g., if the network IP address is 192.168.3.127), log on to the workstation computer (for example, a Linux-based computer) on which the SNMP manager resides, and then type:

```
\> snmpwalk -v 2c -c public 192.168.3.127 system
SNMPv2-MIB::sysDescr.0 Microsoft Windows CE Version 5.0 (Build 1400)
SNMPv2-MIB::sysObjectID.0 SNMPv2-SMI::enterprises.8691.13.7420
SNMPv2-MIB::sysUpTime.0 1282929
SNMPv2-MIB::sysContact.0 Your System Contact Here
SNMPv2-MIB::sysName.0 WindowsCE
```

You will see a series of messages from the SNMP agent on the V481 computer. From there, you can monitor and manage the computer.

Inserting a USB Mass Storage Device into the Computer

Inserting a USB mass storage device will generate a new drive on the V481. The new drive should be visible in the File Explorer.

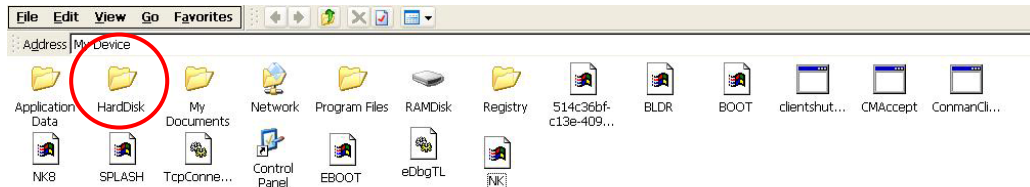
Inserting a Compact Flash Card Storage into a V481 Computer

There is a second CompactFlash slot inside the V481 computer. The Compact Flash slot is designed as a secondary IDE device and it does not support Plug and Play or hot swapping. If you plug a CF card into the slot when entering the operating system, it will make the system hang.

As a result, you must turn off the power before inserting a Compact Flash card. After the CF card is inserted, you can power on the V481. The new folder should be visible in the File Explorer.

Inserting a Hard Disk Drive into a V481 Computer

There is an IDE-based connector in the V481 computer, allowing users to connect a 2.5-inch hard disk drive for additional storage expansion. It does not support Plug and Play. You must turn off the power before installing a hard disk drive to your computer. After you install the hard disk drive, you can power on the V481. A new folder named "HardDisk" should be visible in the File Explorer.



The V481 series of ready-to-run embedded computers are network-centric platforms designed to serve as front-end computers for data acquisition and industrial control. Due to the distributed characteristics of the devices that these computers control, they are often located near the devices in harsh environments, and are usually far away from system administrators. Managing the computers requires being able to modify the network/server configuration, take care of file management, and handle process (thread) monitoring/control.

A management system is provided with the V481 computer to assist administrators with these tasks.

The following topics are covered in this chapter:

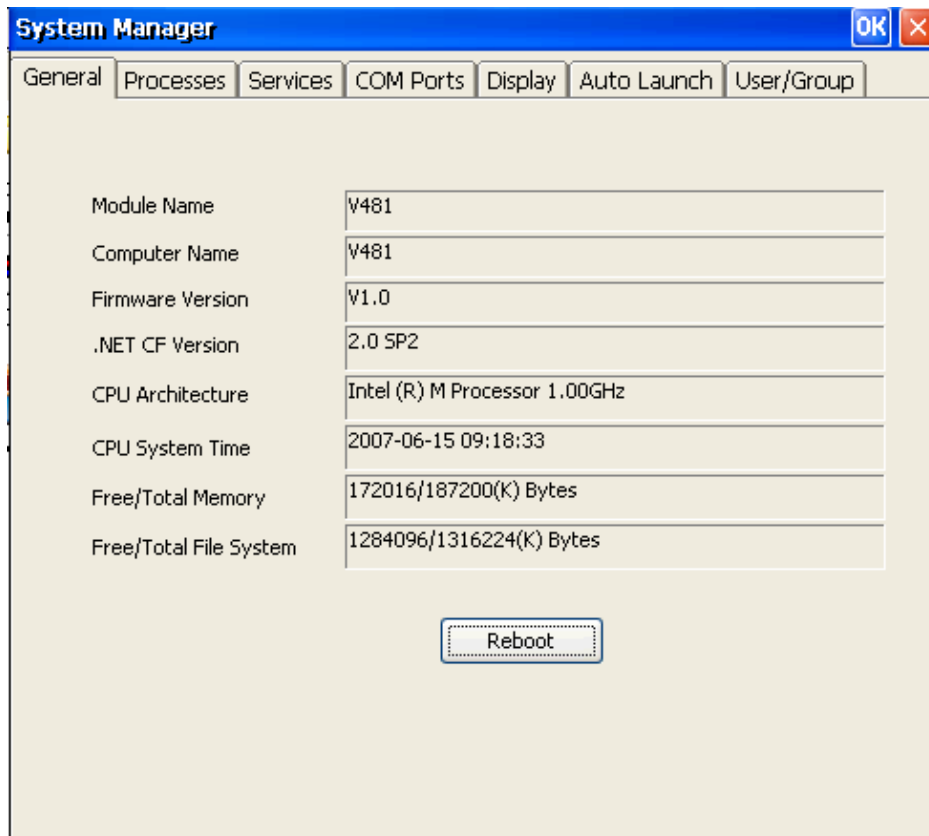
- Before Operating the System**
- System Information**
- Process (Thread) Monitoring/Control**
- Services Monitoring/Control**
- Serial Port Configuration**
- DisplayAuto Launch Configuration**
- User/Group Management**
- Web Server Configuration**

Before Operating the System

Before operating the system, connect your CRT or LCD monitor to the V481 box computer, and then double-click the [System Manager] icon on the desktop.

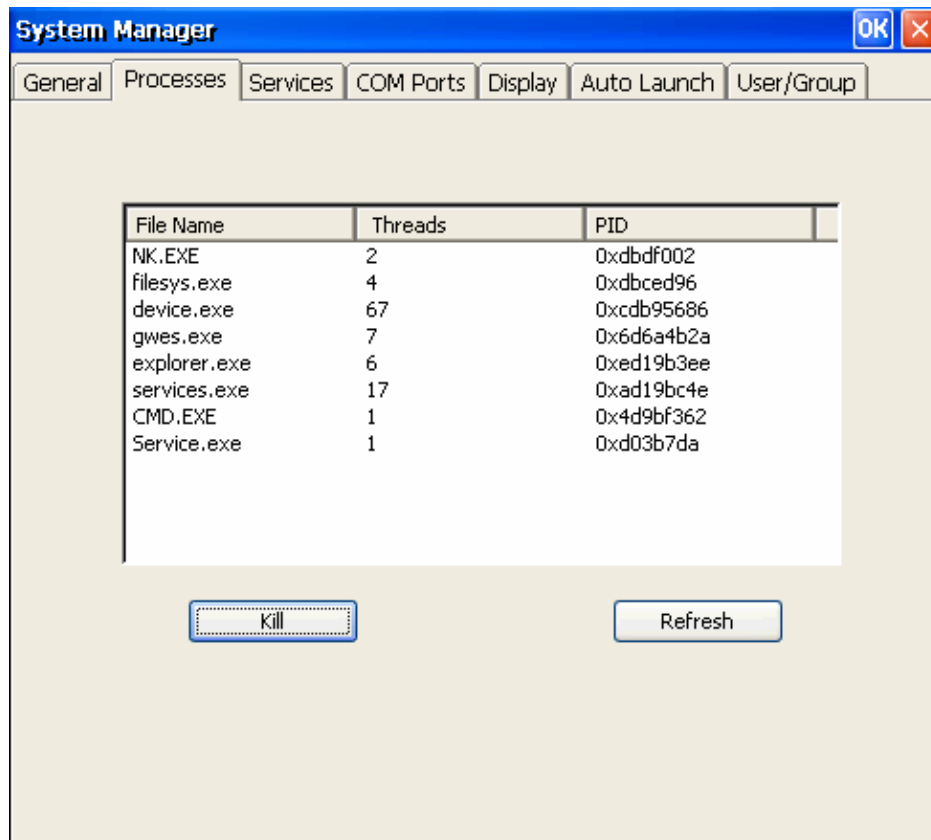
System Information

The first page displays the V481's system information, including the firmware version of the computer, .Net CF version, the system time, and system resources, including main memory and file system usage.



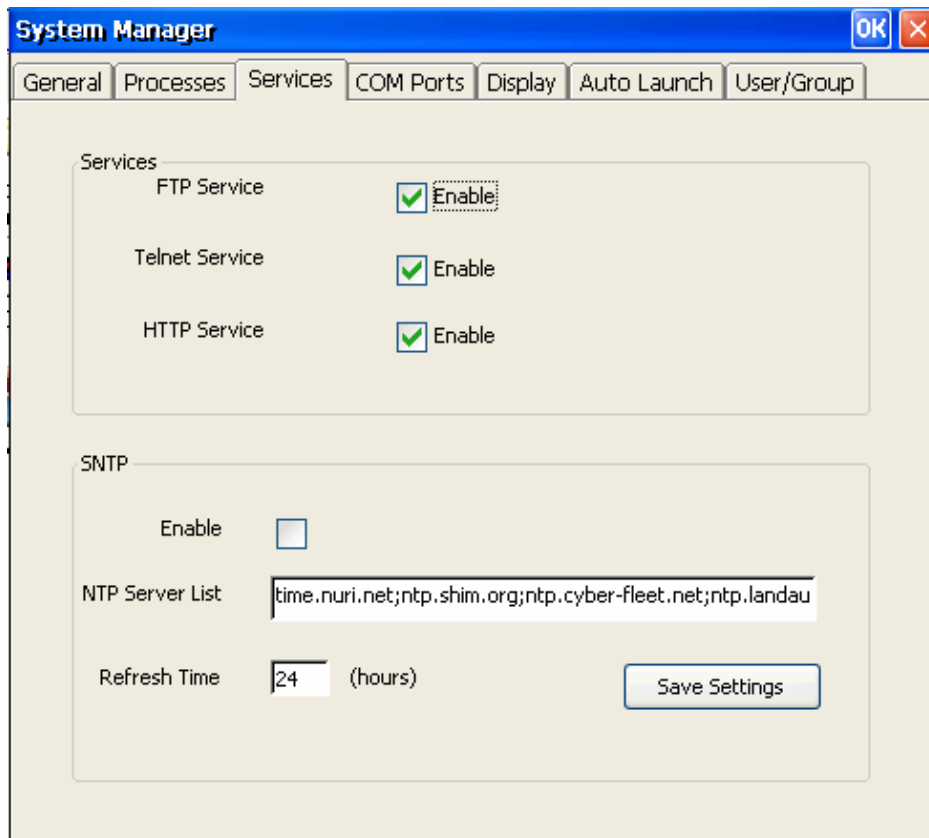
Process (Thread) Monitoring/Control

The V481 computer can manage up to 32 applications at the same time. You can use the management system to monitor and control the applications. To view active processes, click the **Processes** tab. Processes that are currently running will be listed. You can kill a process by clicking the process to highlight it, and then clicking the “kill” button.



Services Monitoring/Control

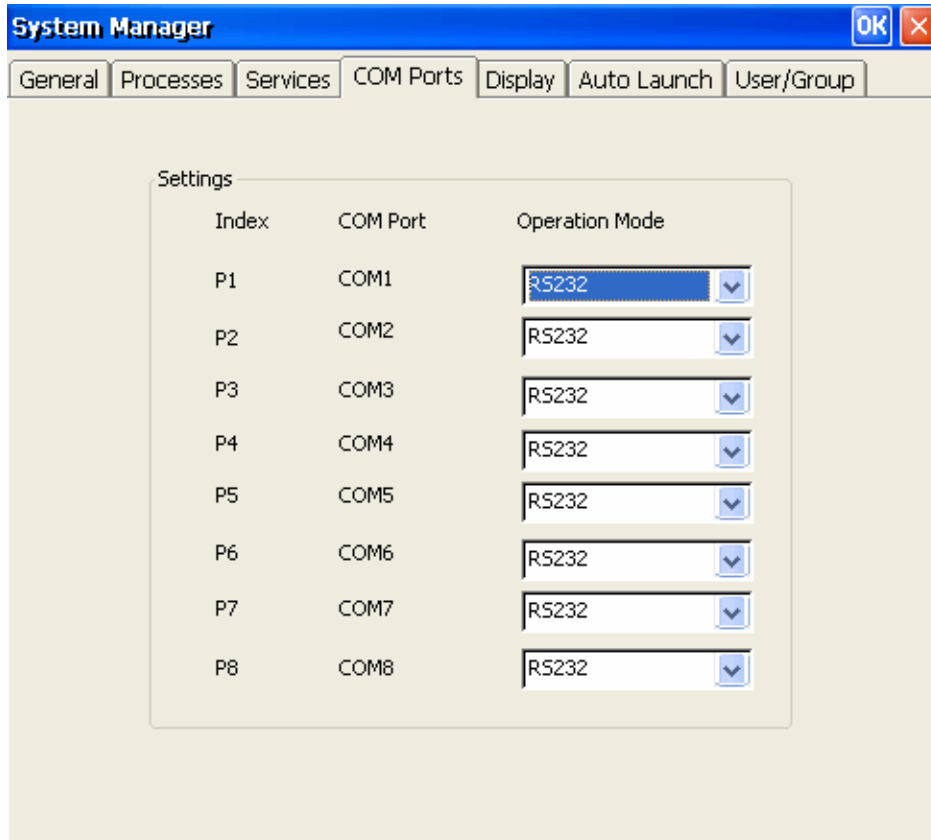
Some services run in the background to provide services, such as FTP, Telnet, and HTTP, for user requests. You can click on a check box to toggle a start/stop operation for a service. Some listed services cannot be stopped in order to maintain normal operation of the computer. Such services do not have a check box next to them.



You can also use SNTP to synchronize the system time. To do this, click the enable check box under SNTP, and then type the NTP server list in the text field and enter a refresh time. Click “Save Settings” after you finish the configuration.

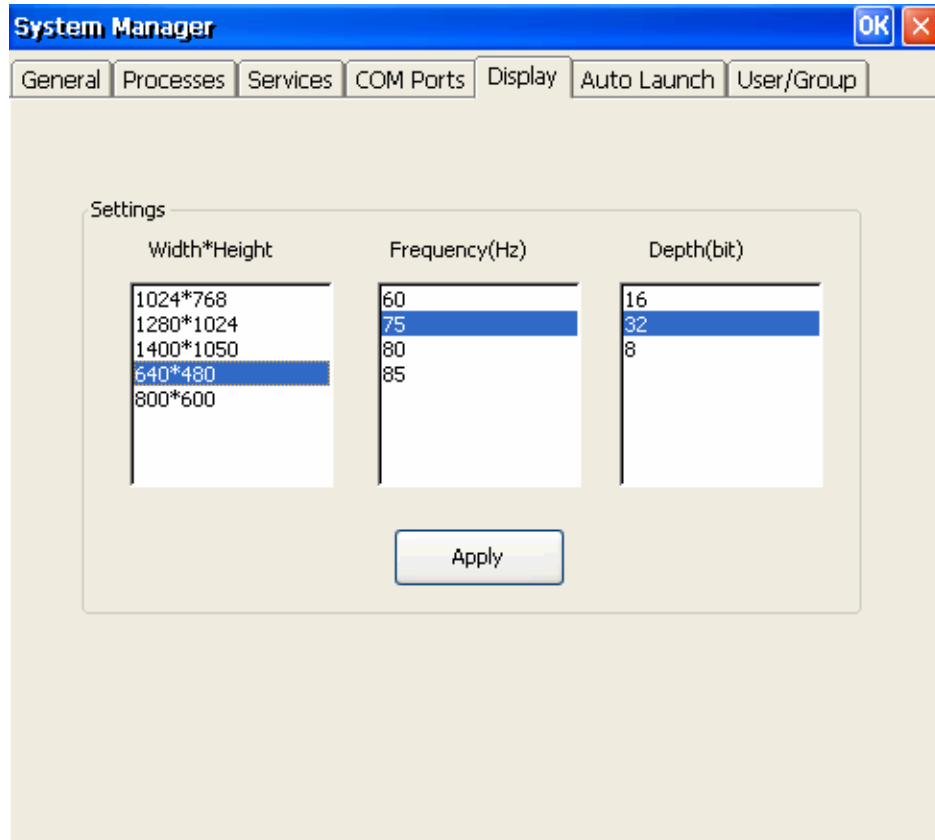
Serial Port Configuration

The V481 has 8 high-performance serial ports. Click the COM Ports tab, and then select RS-232, RS-422, or RS-485 from the drop-down lists to select the serial interface for different ports. The default is RS-232.



Display

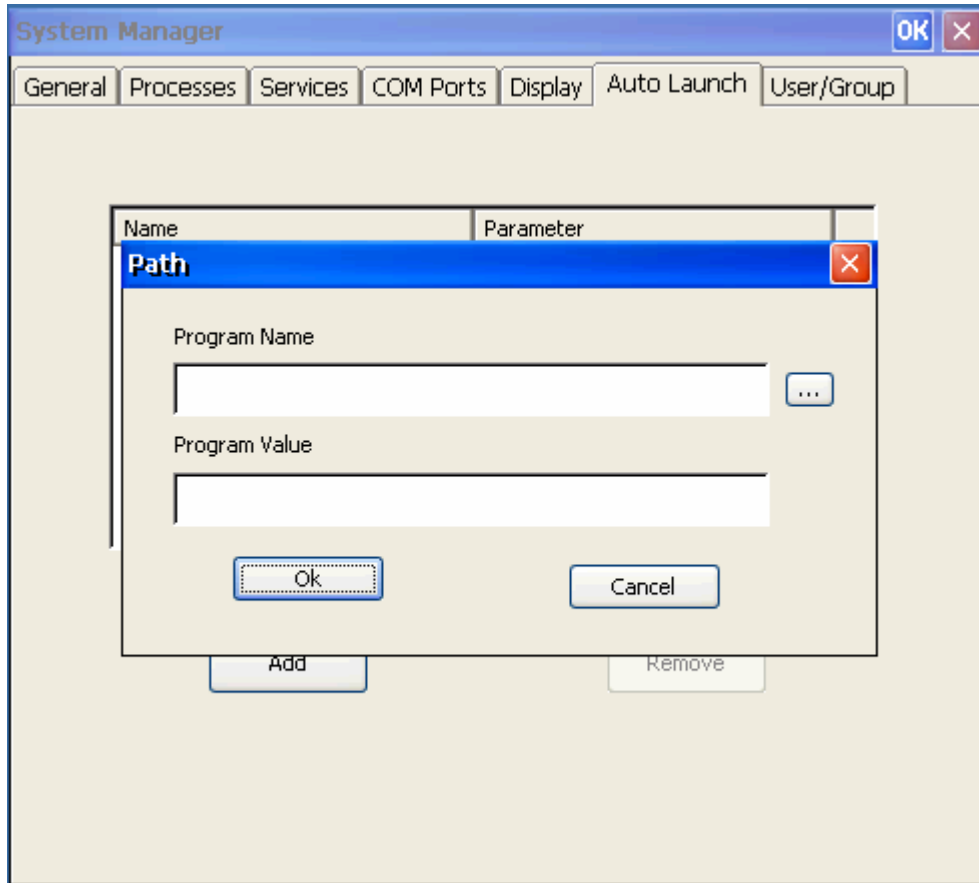
The V481's VGA output can be sent to an LCD monitor or CRT monitor to display the WinCE window. The default settings are 800x600, 60 Hz, and 16 bits. For general usage, you should tune the settings to match those of your LCD or CRT. Click "Apply" to save the settings.



NOTE: You must restart your V481 for the new settings to take effect.

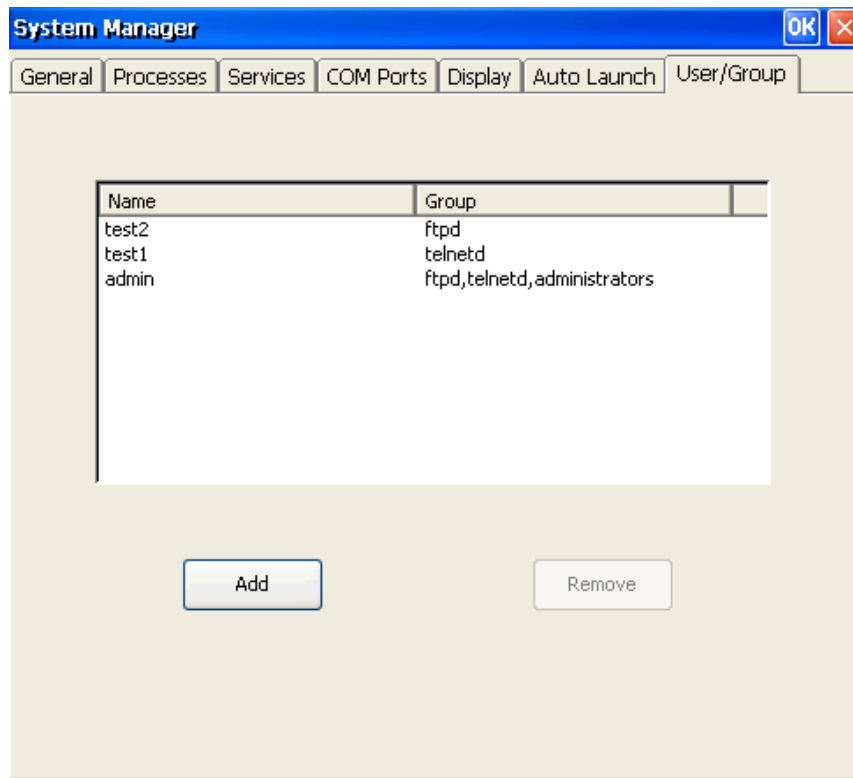
Auto Launch Configuration

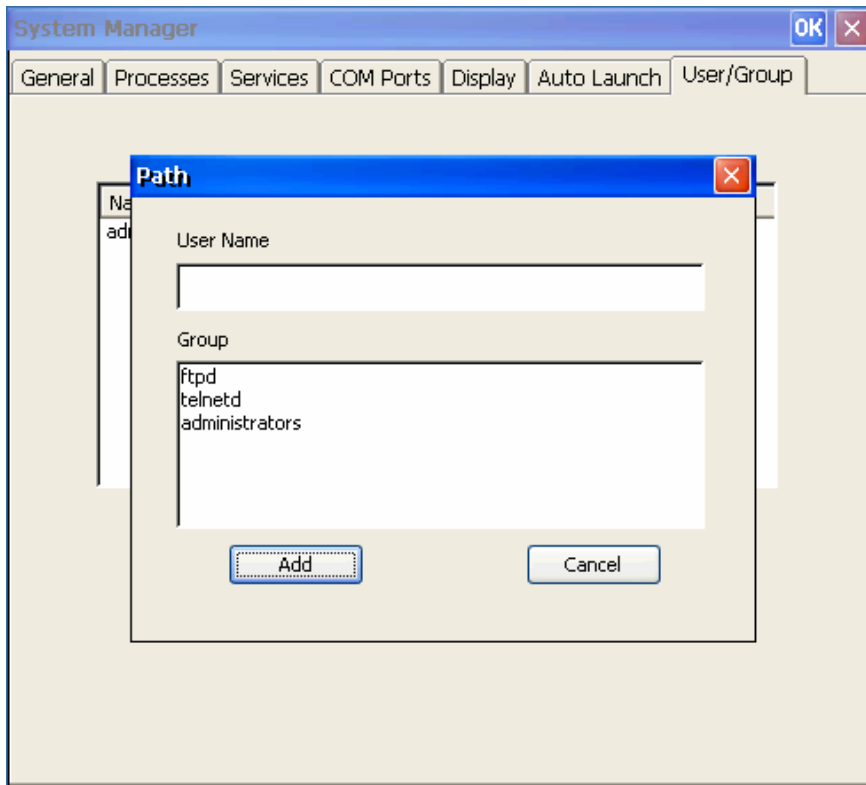
You can specify that certain programs execute automatically at boot up. Click the **“Add”** button to select the program. After entering the program value, click **“OK.”** The programs you specify will be launched automatically the next time you boot up the computer.



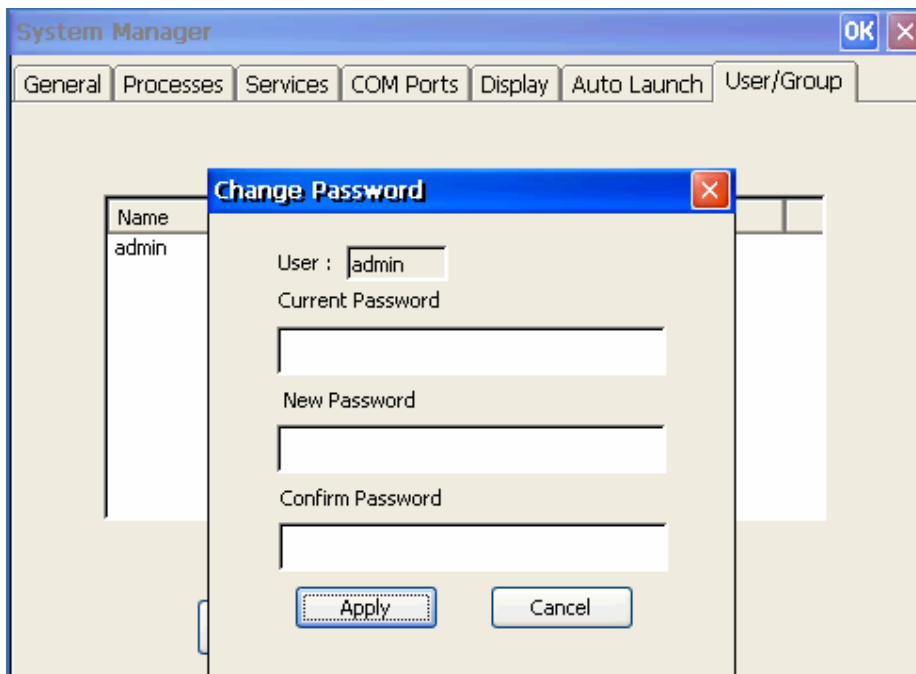
User/Group Management

The user/group utility allows adding users and removing users. You can add a user by clicking the **“Add”** button. Give the user name and assign the groups the user belongs to. Usually, the user group is the service that the user has permission to access. You can assign more than one group to a user. Click **“Add”** after you assign a user name and the corresponding groups. To remove a user, click the **“Remove”** button after you select the user you want to delete.





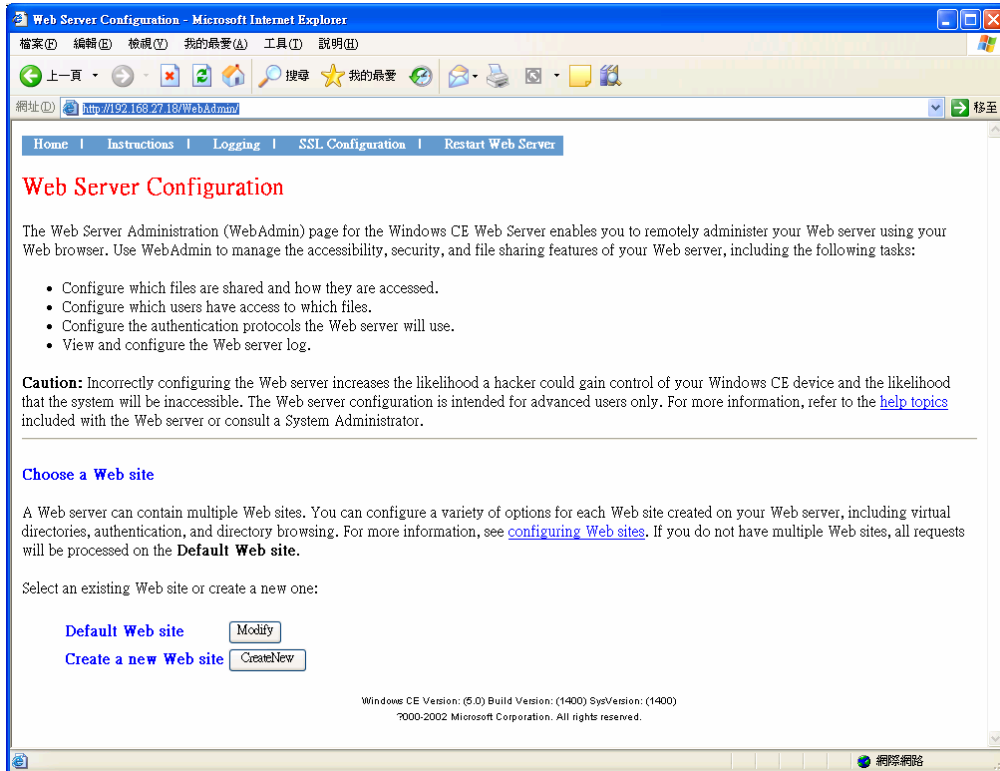
You can also change a user's password. If you double click on a User Name, a change password window will pop up. Provide the current password and new password. After you confirm the new password, click **"Apply."** The password will update accordingly.



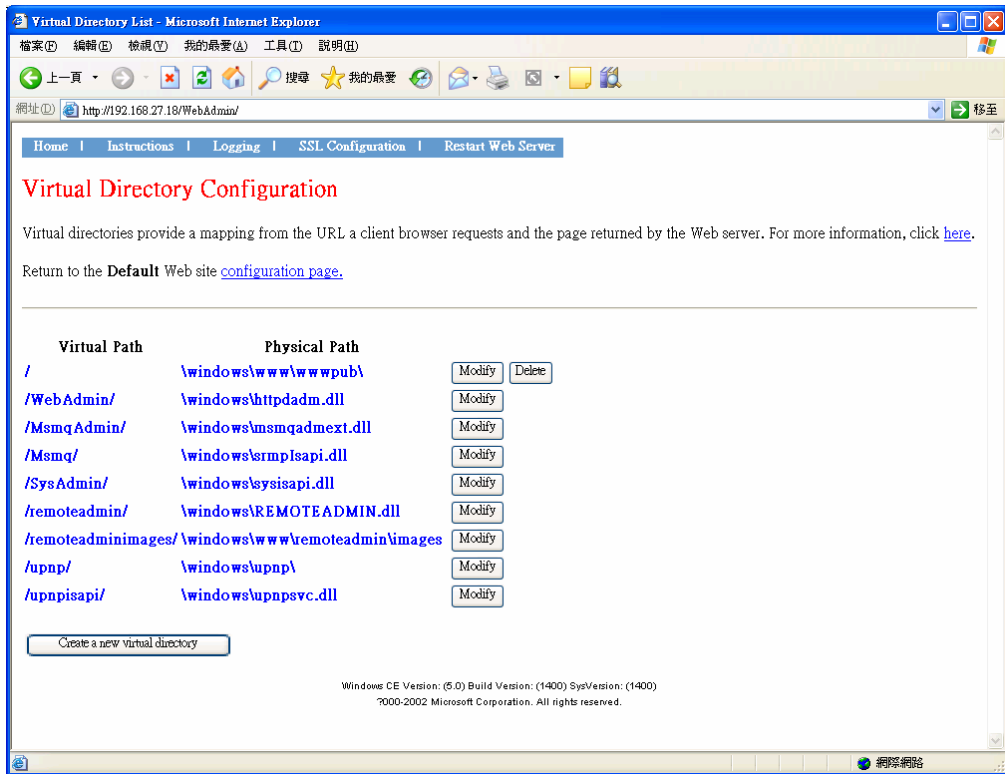
Web Server Configuration

You must use a Windows 2000 or Windows XP machine for web administration. Open an “IE” window, and then go to URL <http://192.168.3.127/WebAdmin> (this is provided the V481's network IP address is 192.168.3.127).

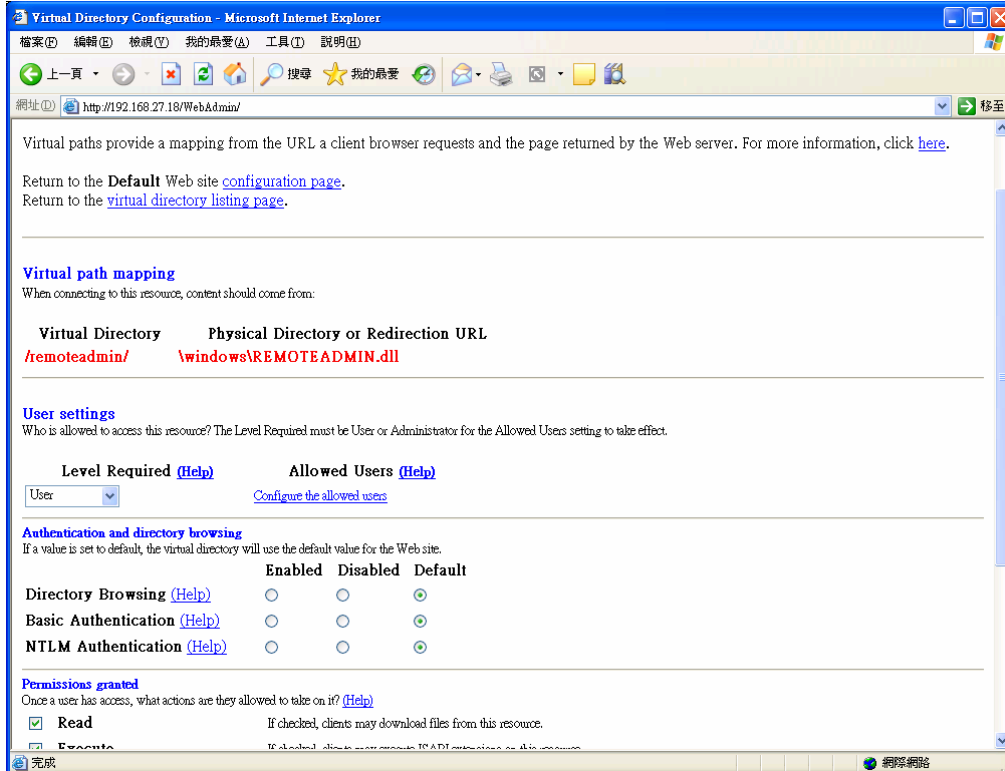
You will see the standard Web server Administration page, as shown below.



Use this administration page to create a new website, or create a virtual web path for your web application.



You can also change the authentication for each web virtual directory.



4

System Recovery

The V481 series of ready-to-run embedded computers are Windows CE 5.0 OS platforms, and the internal file systems support FAT. Although it happens rarely, you may find on occasion that operating system files become damaged. In this chapter, we explain how to revert to the original OS configuration.

The following topics are covered in this chapter:

- Recovery Environment**
- Hardware**
- Recovery Programs**
- Recovery Procedure**

Recovery Environment

The environment includes the hardware and recovery programs for conducting preliminary tests.

Hardware

The hardware used for system recovery includes a V481-CE computer and a bootable USB disk that contains the recovery programs.



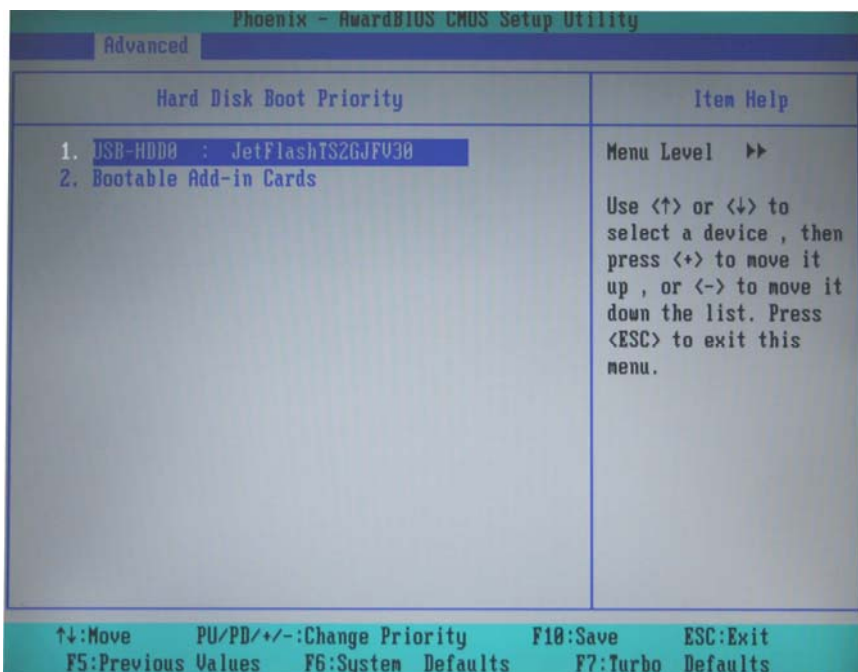
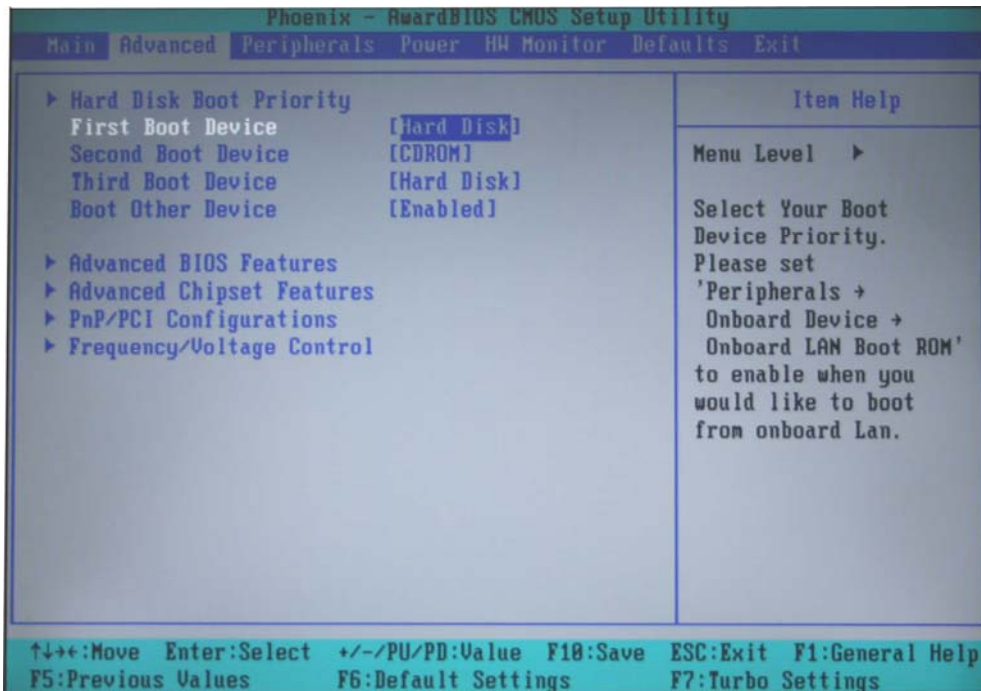
Recovery Programs

We have created programs to recover system image files and executable files.

Recovery Procedure

The recovery procedure is as follows:

1. Create a bootable USB disk
 - a. Copy system files **kernel.sys** and **command.com** to a specific directory.
 - b. Open the HP USB Disk Storage Format Tool.
 - c. Select the USB device you want to use as a bootable disk in device options.
 - d. Select FAT for the File system.
 - e. Type the disk name in the volume label.
 - f. Check the option **Create a DOS startup disk** in the format options.
 - g. Specify the directory that includes the system files.
 - h. Press **start** to format the USB disk.
 - i. Copy all files in the **V481_Recovery** directory to the USB disk.
2. Bios setup on V481
 - a. Insert the USB disk into the V481.
 - b. Power on and press **DEL** to enter the bios setup menu.
 - c. Select **[Advanced] → [hard Disk Boot Priority]** and then press **Enter**.
 - d. In the setup menu, use “↑” or “↓” to select the USB device.
 - e. Press “+” to move the device to the top, and then press **ESC** to exit the setup menu.
 - f. Make sure the first boot device is “Hard Disk.” If not, press **Enter** to change it.
 - g. Select **[Exit] → [Save & Exit Setup]** and then press **Enter**.
 - h. Select **Y** to save to CMOS and exit.



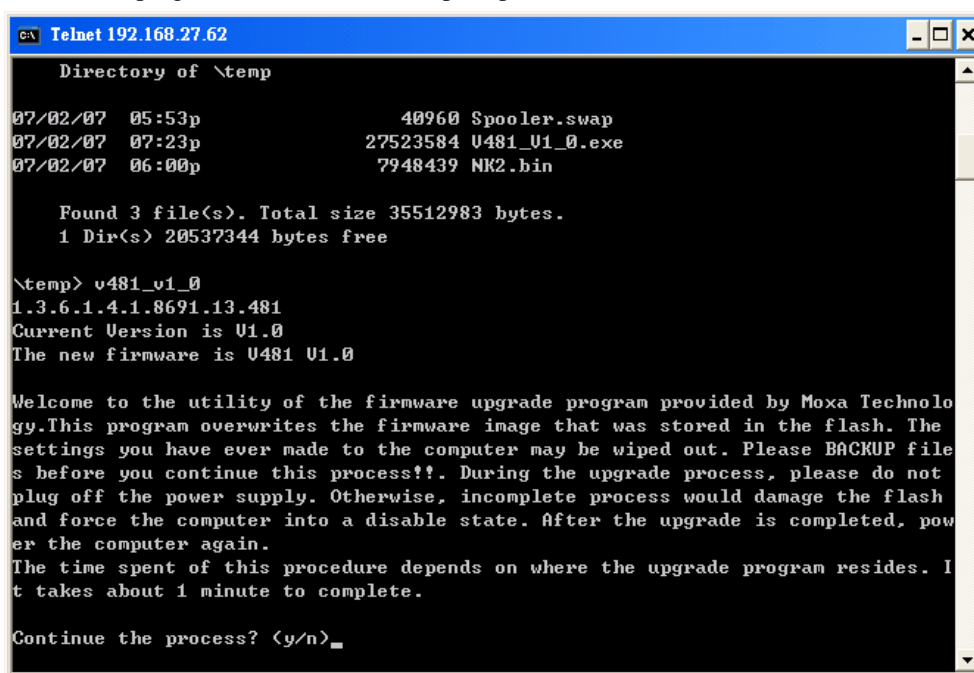
3. System recovery
 - > If the bios setup is correct, the computer will restart and boot from the USB disk.
 - > In the c:\ directory type "mkdisk" to initiate the recovery procedure.
 - > When the execution is completed, power off and remove the USB disk.
 - > Power on the computer to activate the operating system.

NOTE: The HP USB Disk Storage Format Tool can be downloaded from the Internet. Use the keyword "HP USB Disk Storage Format Tool" to search for and download this tool.

Firmware Upgrade Procedure

Moxa engineers continuously enhance software features to improve the quality and functionality of Moxa's embedded products, and the most up-to-date version of the firmware is posted in Moxa's download center. After you download the firmware to your work station, take the following steps to upgrade the firmware.

1. Upload this file to the target machine under the root directory (i.e., \). If you place this file on a CompactFlash or a USB device, copy it to the root directory first for a faster upgrade. Executing the program from a USB 1.1 device will take much longer.
2. Log on to the target computer through a Telnet or console connection.
3. Execute the program from the command prompt.



```
c:\ Telnet 192.168.27.62
Directory of \temp
07/02/07  05:53p                40960 $pooler.swap
07/02/07  07:23p            27523584 U481_U1_0.exe
07/02/07  06:00p            7948439 NK2.bin

Found 3 file(s). Total size 35512983 bytes.
1 Dir(s) 20537344 bytes free

\temp> v481_v1_0
1.3.6.1.4.1.8691.13.481
Current Version is U1.0
The new firmware is U481 U1.0

Welcome to the utility of the firmware upgrade program provided by Moxa Technology. This program overwrites the firmware image that was stored in the flash. The settings you have ever made to the computer may be wiped out. Please BACKUP files before you continue this process!!. During the upgrade process, please do not plug off the power supply. Otherwise, incomplete process would damage the flash and force the computer into a disable state. After the upgrade is completed, power the computer again.
The time spent of this procedure depends on where the upgrade program resides. It takes about 1 minute to complete.

Continue the process? <y/n>_
```

4. Press “Y” to continue the process.

```

c:\ Telnet 192.168.27.62
07/02/07 07:23p                27523584 U481_U1_0.exe
07/02/07 06:00p                7948439 NK2.bin

    Found 3 file(s). Total size 35512983 bytes.
    1 Dir(s) 20537344 bytes free

\temp> v481_u1_0
1.3.6.1.4.1.8691.13.481
Current Version is U1.0
The new firmware is U481 U1.0

Welcome to the utility of the firmware upgrade program provided by Moxa Technology. This program overwrites the firmware image that was stored in the flash. The settings you have ever made to the computer may be wiped out. Please BACKUP files before you continue this process!?. During the upgrade process, please do not plug off the power supply. Otherwise, incomplete process would damage the flash and force the computer into a disable state. After the upgrade is completed, power the computer again.
The time spent of this procedure depends on where the upgrade program resides. It takes about 1 minute to complete.

Continue the process? <y/n>y
The firmware upgrade procedure may take 1 minute, please wait..
1552384 / 23550155_

```

5. Please allow at least one minute to complete the upgrade process. After the firmware has been upgraded successfully, press ‘Y’ to keep the current network settings. Press “N” to reset to factory default values.

```

c:\ Telnet 192.168.27.62
and force the computer into a disable state. After the upgrade is completed, power the computer again.
The time spent of this procedure depends on where the upgrade program resides. It takes about 1 minute to complete.

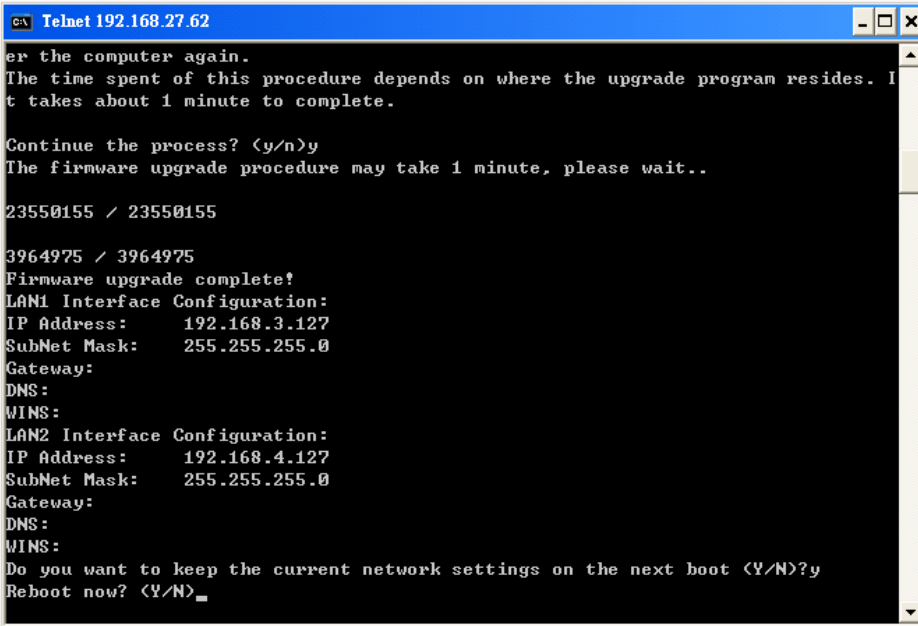
Continue the process? <y/n>y
The firmware upgrade procedure may take 1 minute, please wait..

23550155 / 23550155

3964975 / 3964975
Firmware upgrade complete!
LAN1 Interface Configuration:
IP Address:    192.168.3.127
SubNet Mask:  255.255.255.0
Gateway:
DNS:
WINS:
LAN2 Interface Configuration:
IP Address:    192.168.4.127
SubNet Mask:  255.255.255.0
Gateway:
DNS:
WINS:
Do you want to keep the current network settings on the next boot <Y/N>?

```

6. Press "Y" to reboot the target computer.



```
er the computer again.  
The time spent of this procedure depends on where the upgrade program resides. I  
t takes about 1 minute to complete.  
  
Continue the process? (y/n)y  
The firmware upgrade procedure may take 1 minute, please wait..  
  
23550155 / 23550155  
  
3964975 / 3964975  
Firmware upgrade complete!  
LAN1 Interface Configuration:  
IP Address: 192.168.3.127  
SubNet Mask: 255.255.255.0  
Gateway:  
DNS:  
WINS:  
LAN2 Interface Configuration:  
IP Address: 192.168.4.127  
SubNet Mask: 255.255.255.0  
Gateway:  
DNS:  
WINS:  
Do you want to keep the current network settings on the next boot (Y/N)?y  
Reboot now? (Y/N)_
```