

# 11

## Setting Up Windows NT Real COM port

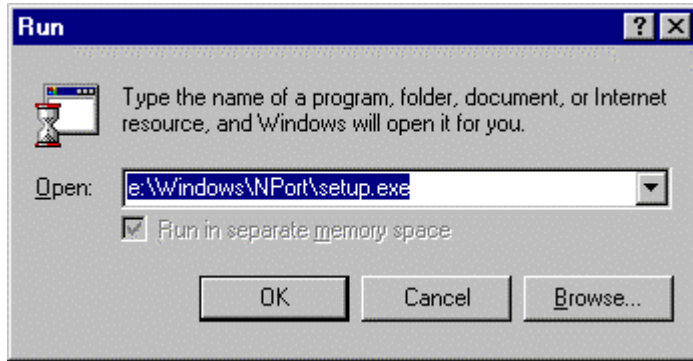
CN2500 offers Windows NT Real COM port driver enabling you to control its serial ports as if they were standard Windows NT COM ports. You can run Windows NT application software, such as modem pooling, fax pooling, data acquisition, thin-client, and RAS, to control devices attached to Moxa CN2500 Async Server.

Async Server shares the same Windows NT Real COM port driver with another Moxa product, NPort Server. NPort Server is a serial device server for PC-based automation users. NPort Server Guide is a simplified version of NPort Server User's Manual written especially for Async Server users. Open NPort Server Guide, located on the CN2500 CD, to learn how to set up a Windows NT host.

The Async Server firmware already includes all functions for NPort Server. Please do not use the NPort Server firmware to upgrade Async Server.

### Setting Up Windows NT hosts

After using CN2500 Console Utility to set up a Windows NT Real COM port for each serial port, you will need to install Windows NT Real COM port driver on every Windows NT host needing access to CN2500 ports. Run `setup.exe`, located in the `Windows/NPort` folder on the CN2500 CD, and then follow the instructions to configure and map COM ports to Async Server serial ports.



After setup is done, each of CN2500's serial ports will map to Windows NT COM ports. Refer to NPort Server Guide (nport-guide.pdf) on the CN2500 CD for detailed information.

