

MAT-WDB-PA-NF-2-0708 Series

MIMO 2x2, 2.4/5 GHz, dual-band panel antennas: 7/8 dBi, N-type (female)



Features and Benefits

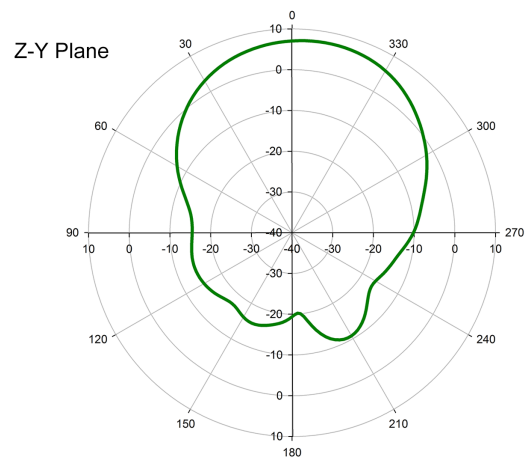
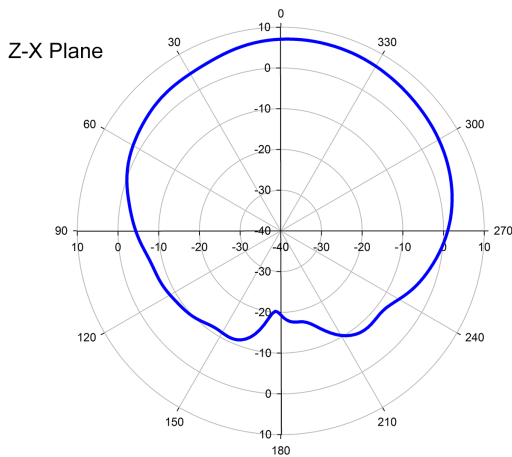
- Lightweight
- Compact form factor
- Pole-mounting support
- -40 to 75°C operating temperature range

Introduction

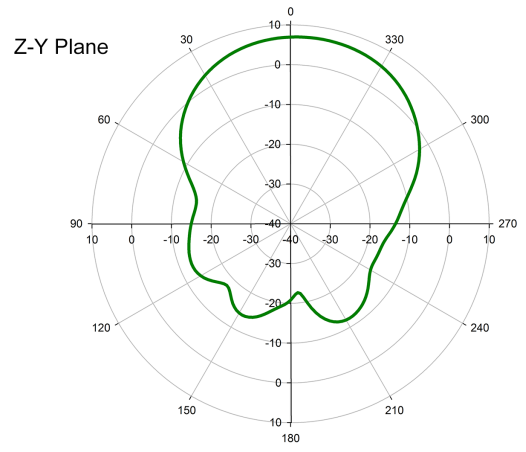
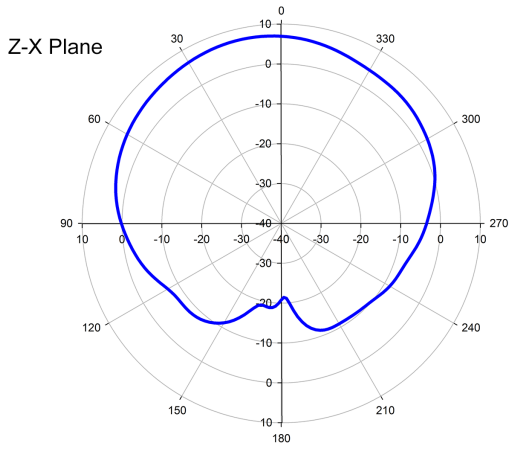
The MAT-WDB-PA-NF-2-0708 antenna is a compact MIMO 2x2 dual-band panel antenna with an N-type (female) connector. The antenna can be used in both the 2.4 GHz and 5 GHz frequencies and provides a gain of 7/8 dBi.

Field Patterns

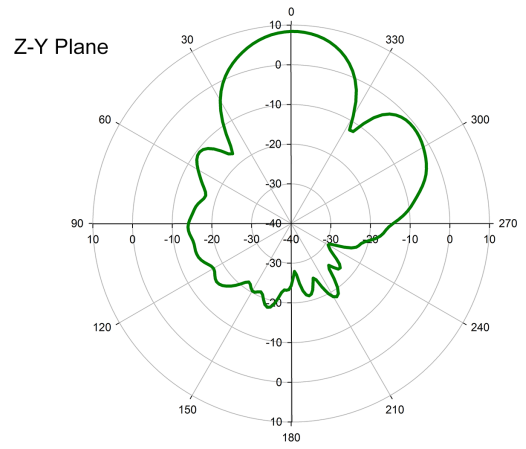
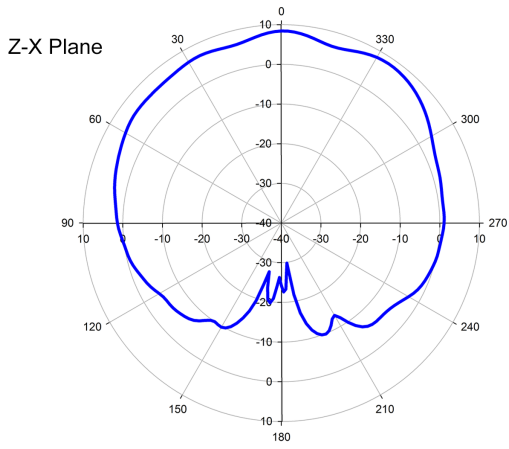
Port 1 Frequency: 2.4 GHz



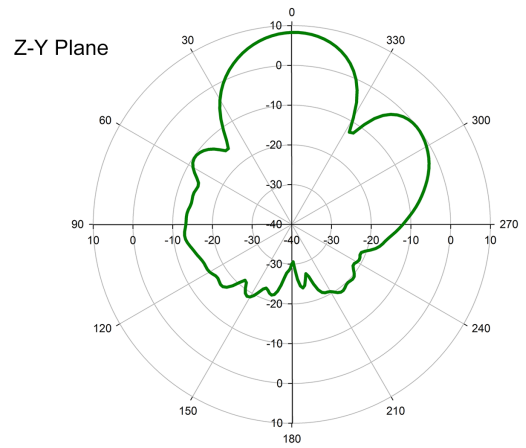
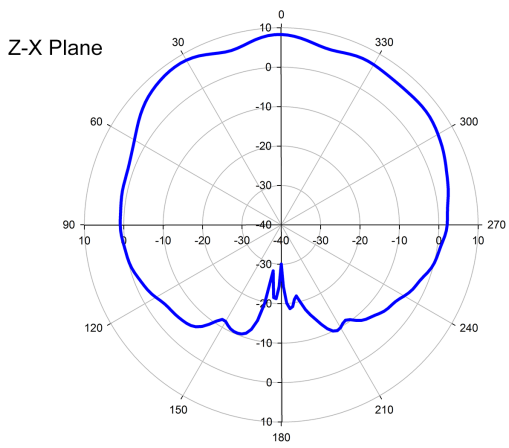
Port 2 Frequency: 2.4 GHz



Port 1 Frequency: 5 GHz



Port 2 Frequency: 5 GHz



Specifications

Antenna Characteristics

Frequency	2.4 to 2.5, 4.9 to 5.9 GHz
Antenna Type	MIMO 2x2, Directional, Panel
Typical Antenna Gain	7/8 dBi
Connector	N-type (female)
Impedance	50 ohms

Polarization	Vertical, Vertical
HPBW/Horizontal	90°
HPBW/Vertical	50°
V.S.W.R.	2:1 max.
Power Handling	2 W (max.)

Physical Characteristics

Dimensions	206 x 177 x 45 mm (8.11 x 6.97 x 1.77 in)
Weight	935 g (2.06 lb)
Radome Color	White
Radome Material	ABS
Installation	Pole mount

Environmental Limits

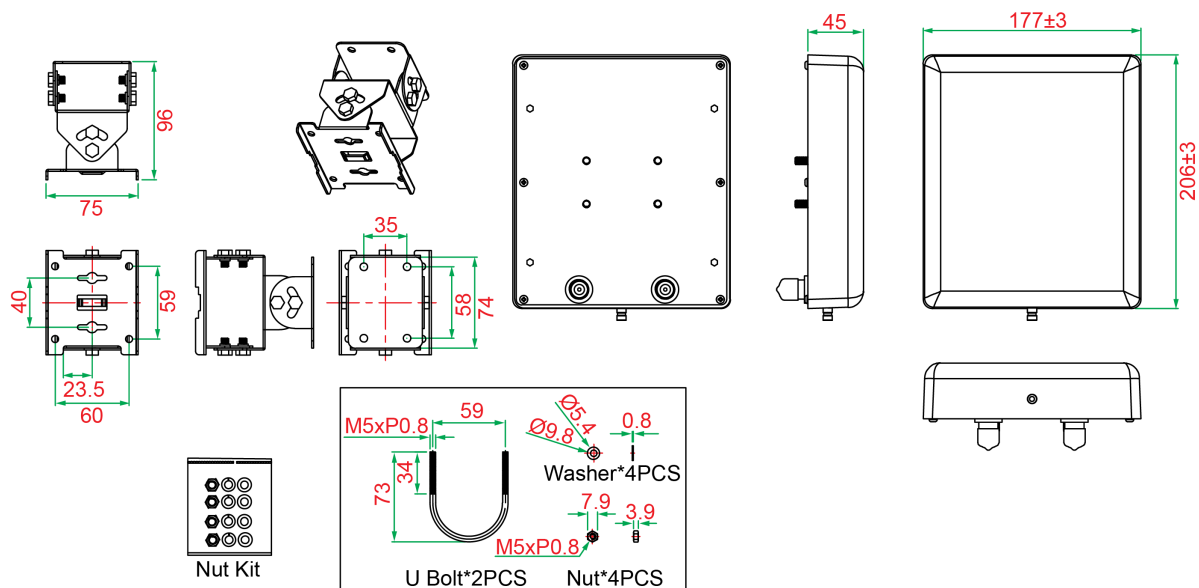
Operating Temperature	-40 to 75°C (-40 to 167°F)
Storage Temperature (package included)	-40 to 75°C (-40 to 167°F)
Ambient Relative Humidity	5 to 95% (30°C, non-condensing)

Warranty

Warranty Period	1 year
Details	See www.moxa.com/warranty

Dimensions

Unit: mm



Ordering Information

Model Name	Frequency	Antenna Type	Antenna Gain	Connector
MAT-WDB-PA-NF-2-0708	2.4 to 2.5, 4.9 to 5.9 GHz	MIMO 2x2, Directional, Panel	7/8 dBi	N-type (female)

© Moxa Inc. All rights reserved. Updated Nov 12, 2018.

This document and any portion thereof may not be reproduced or used in any manner whatsoever without the express written permission of Moxa Inc. Product specifications subject to change without notice. Visit our website for the most up-to-date product information.